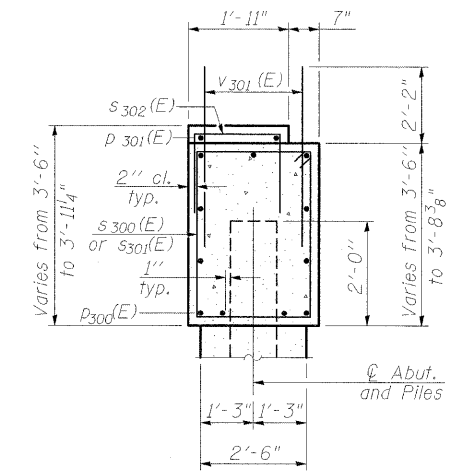
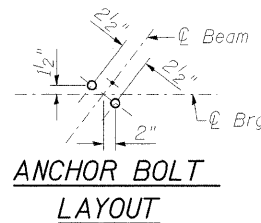


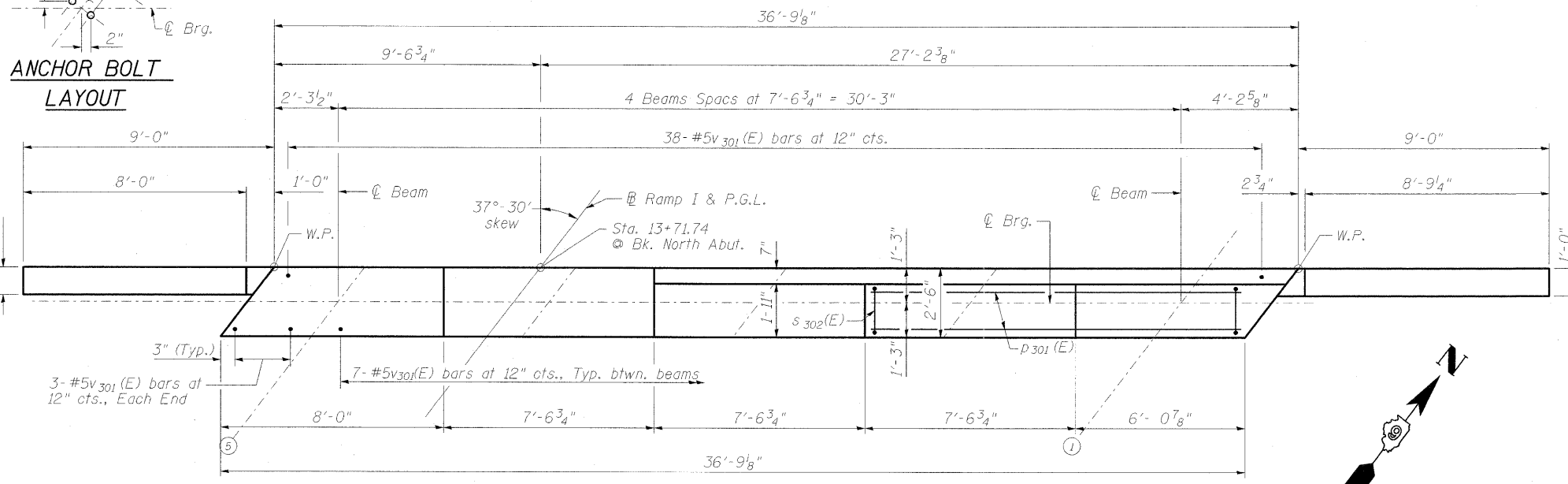
ELEVATION



SEC. THRU ABUT.



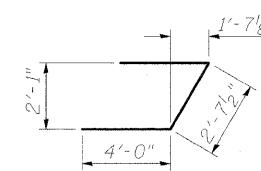
ANCHOR BOLT LAYOUT



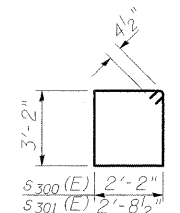
TOP VIEW

FIELD CUTTING DIAGRAM

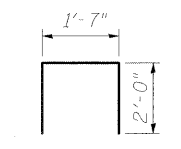
Order v302(E) and v303(E) full length. Cut as shown and use remainder of bars in opposite face.



BAR U300(E)



BARS s300(E) & s301(E)



BAR s302(E)

BILL OF MATERIAL

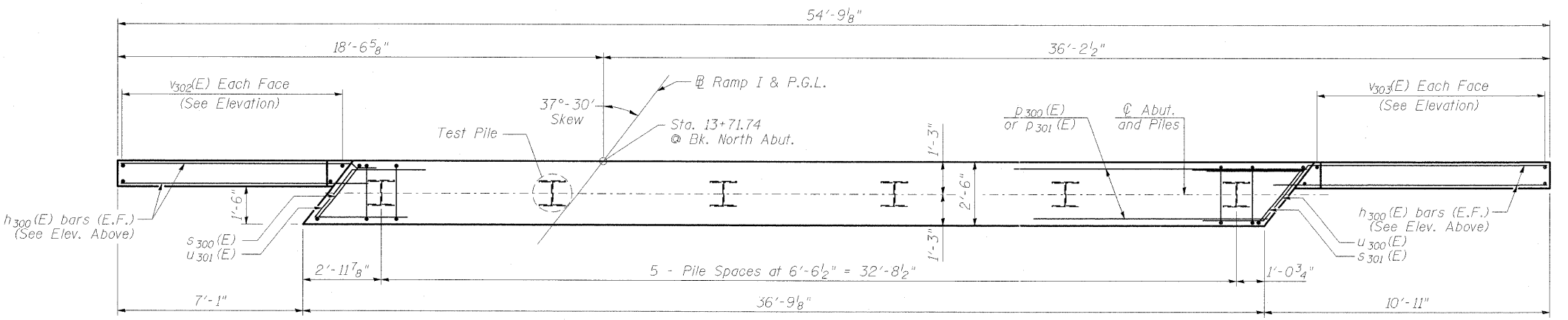
Bar	No.	Size	Length	Shape	
h300(E)	34	#6	12'-1"	—	
p300(E)	11	#6	36'-5"	—	
p301(E)	2	#4	13'-6"	—	
s300(E)	32	#4	11'-5"	□	
s301(E)	2	#4	12'-6"	□	
s302(E)	14	#4	5'-7"	□	
u300(E)	8	#6	10'-8"	┌	
v301(E)	72	#5	4'-4"	—	
v302(E)	10	#5	10'-2"	—	
v303(E)	10	#5	10'-7"	—	
Concrete Structures				Cu. Yd.	16.4
Reinforcement Bars, Epoxy Coated				Pound	2,220
Furnishing Steel Piles, HP 12x53				Foot	165
Driving Piles				Foot	165
Test Pile Steel, HP 12x53				Each	1
Concrete Encasement				Cu. Yd.	2.1

NOTES:

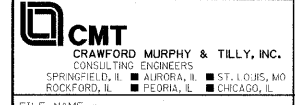
- Four steps monolithically with cap.
- Space reinforcement to miss anchor bolts.
- See Sheet 2 of 23 for abutment backfill requirements.
- See Sheet 21 of 23 for steel H-pile details.
- For details of piles and Concrete Encasement, see sheet 21 of 23.

PILE DATA

PILE TYPE AND SIZE:	HP 12x53
NOMINAL REQUIRED BEARING:	418 Kips
FACTORED RESISTANCE AVAILABLE:	230 Kips
ESTIMATED PILE LENGTH:	33 Ft.
NUMBER OF PRODUCTION PILES:	5
NUMBER OF TEST PILES:	1



PILE CAP PLAN



FILE NAME = ...Ramp I\NO ABUT..014.dgn
 USER NAME = Rob Heady
 PLOT SCALE =
 PLOT DATE = 10/7/2011

DESIGNED - BPD
 CHECKED - REB
 DRAWN - GLD
 CHECKED - BPD

REVISED -
 REVISED -
 REVISED -
 REVISED -

**STATE OF ILLINOIS
 DEPARTMENT OF TRANSPORTATION**

**NORTH ABUTMENT
 STRUCTURE NO. 100-0097**

SHEET NO. 13 OF 23 SHEETS

F.A. RTE.	SECTION	COUNTY	TOTAL SHEETS	SHEET NO.
*	0X1-6-2\HB-1	WILLIAMSON	968	673
* F.A.I. 57 AND F.A.P. 331			CONTRACT NO. 78182	

ILLINOIS FED. AID PROJECT