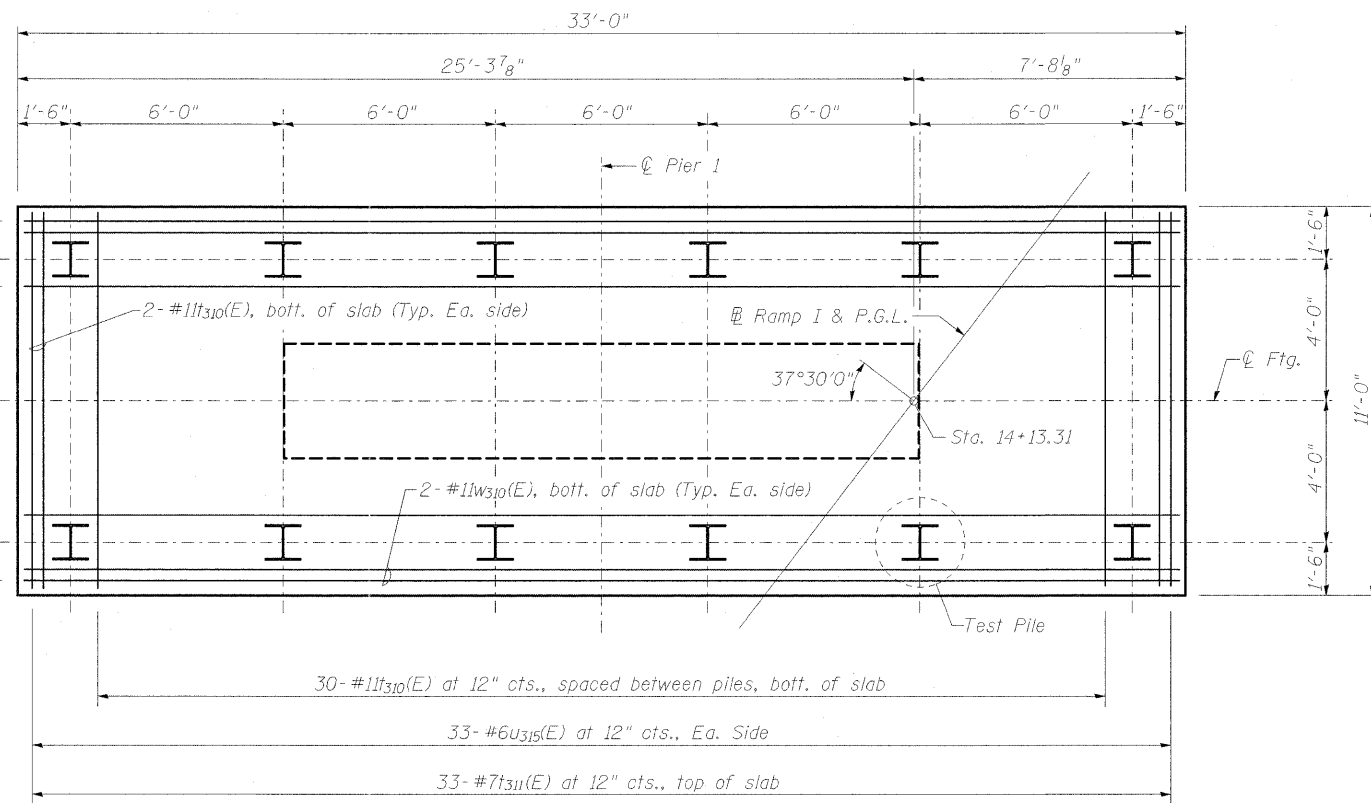
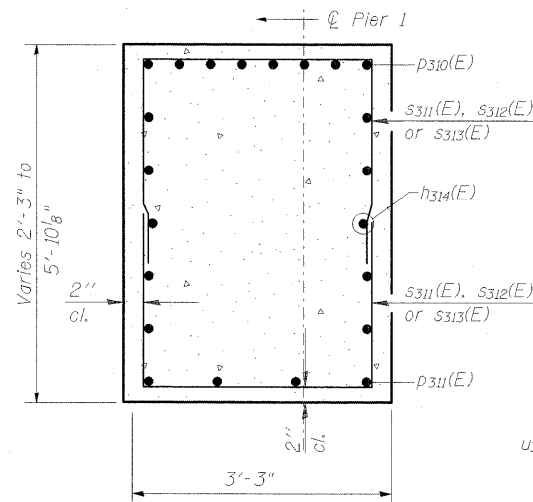


**PIER 1
BILL OF MATERIAL**

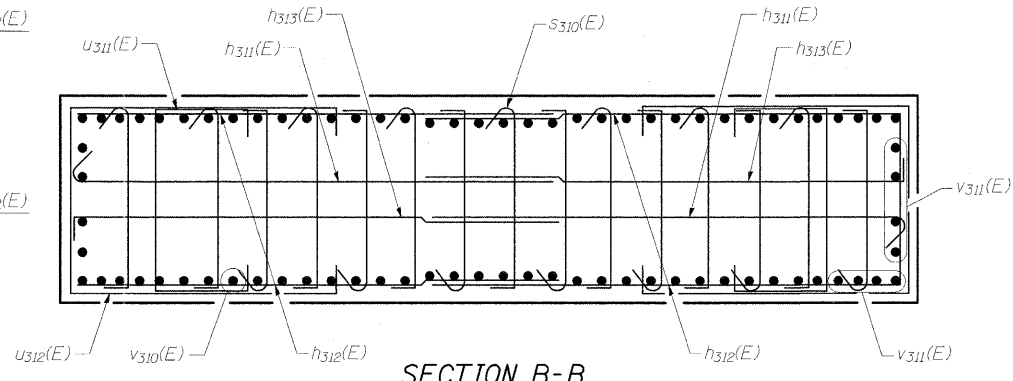
Bar No.	Size	Length	Shape
h310 (E)	#5	19'-8"	—
h311 (E)	#5	10'-7"	—
h312 (E)	#5	9'-8"	—
h313 (E)	#5	10'-7"	—
h314 (E)	#5	33'-2"	—
h315 (E)	#5	12'-7"	—
n310 (E)	#10	11'-8"	—
n311 (E)	#10	9'-8"	—
p310 (E)	#11	33'-2"	—
p311 (E)	#5	10'-3"	—
s310 (E)	#5	3'-11"	—
s311 (E)	#5	10'-5"	—
s312 (E)	#5	9'-1"	—
s313 (E)	#5	8'-6"	—
s314 (E)	#5	11'-9"	—
s315 (E)	#5	11'-5"	—
s316 (E)	#5	10'-11"	—
s317 (E)	#5	10'-7"	—
s318 (E)	#5	16'-5"	—
t310 (E)	#11	10'-6"	—
t311 (E)	#7	10'-6"	—
t312 (E)	#5	10'-6"	—
u310 (E)	#5	8'-1"	—
u311 (E)	#5	6'-11"	—
u312 (E)	#5	15'-11"	—
u313 (E)	#5	6'-11"	—
u314 (E)	#6	8'-9"	—
u315 (E)	#6	8'-8"	—
v310 (E)	#10	13'-0"	—
v311 (E)	#10	15'-0"	—
w310 (E)	#11	32'-6"	—
w311 (E)	#7	32'-6"	—
w312 (E)	#5	32'-6"	—
Structure Excavation	Cu. Yd.	164	
Concrete Structures	Cu. Yd.	120.0	
Reinforcement Bars, Epoxy Coated	Pound	26,000	
Furnishing Steel Piles, HP 12x53	Foot	143	
Driving Piles	Foot	143	
Test Pile Steel HP 12x53	Each	1	
Mechanical Splicers	Each	146	
Concrete Sealer	Sq. Ft.	591	



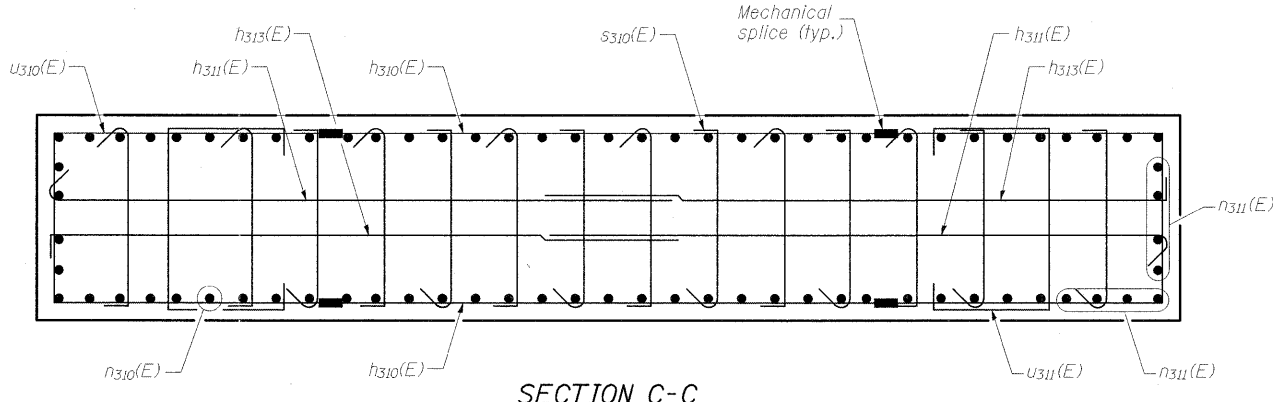
FOOTING PLAN



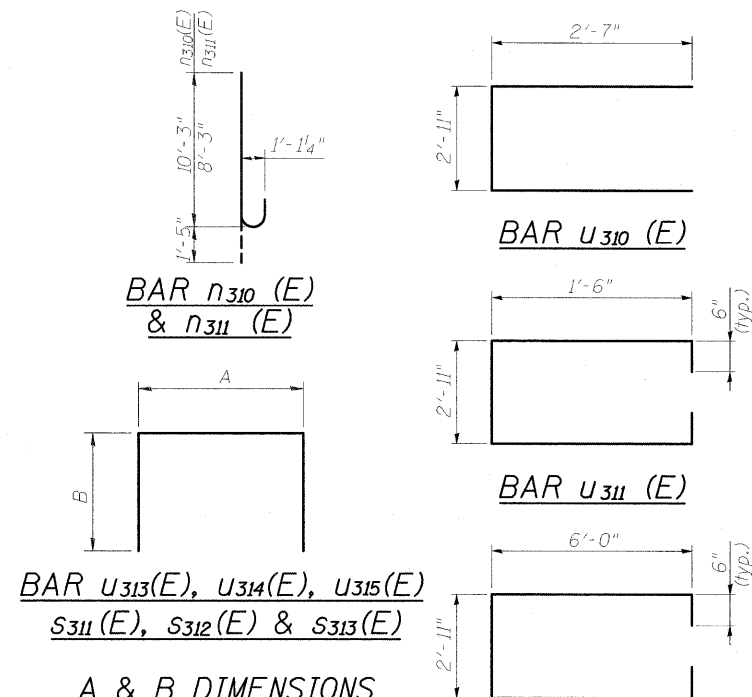
SECTION A-A



SECTION B-B

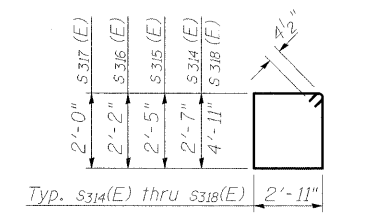


SECTION C-C

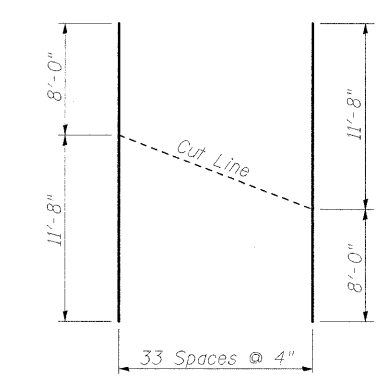


A & B DIMENSIONS

Bar	A	B
s311(E)	2'-11"	3'-9"
s312(E)	2'-11"	3'-1"
s313(E)	2'-11"	2'-9 1/2"
u313(E)	2'-11"	2'-0"
u314(E)	2'-9"	3'-0"
u315(E)	4'-8"	2'-0"



BARS s314(E) thru s318(E)



**CUTTING DIAGRAM
BAR h310(E)**



FILE NAME = ...ramp 1\PIER 1.016A.dgn
USER NAME = Rob Heady
DESIGNED - BPD
CHECKED - REB
DRAWN - GLD
CHECKED - BPD
PLOT SCALE =
PLOT DATE = 10/7/2011

DESIGNED - BPD
CHECKED - REB
DRAWN - GLD
CHECKED - BPD
REVISED -
REVISED -
REVISED -
REVISED -

**STATE OF ILLINOIS
DEPARTMENT OF TRANSPORTATION**

**PIER 1 DETAILS
STRUCTURE NO. 100-0097
SHEET NO. 16 OF 23 SHEETS**

F.A. RTE.	SECTION	COUNTY	TOTAL SHEETS	SHEET NO.
*	(X1-6-2)HB-1	WILLIAMSON	968	676
* F.A.I. 57 AND F.A.P. 331			CONTRACT NO. 78182	
ILLINOIS FED. AID PROJECT				