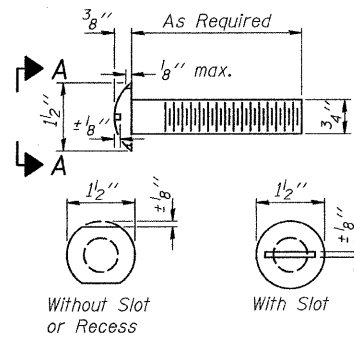
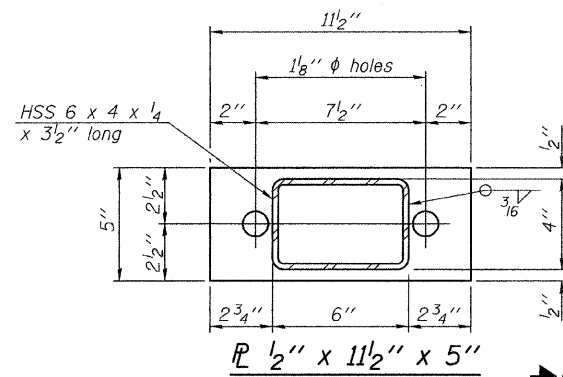


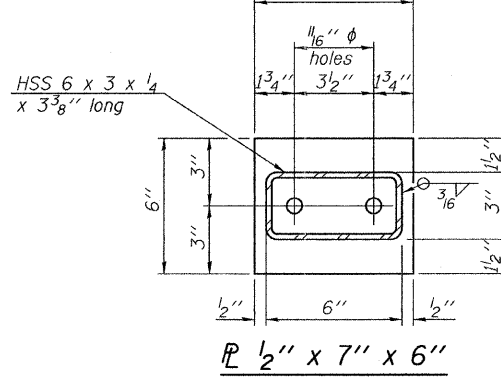
FOR RAIL POST SPACING SEE SH.#5 OF 7



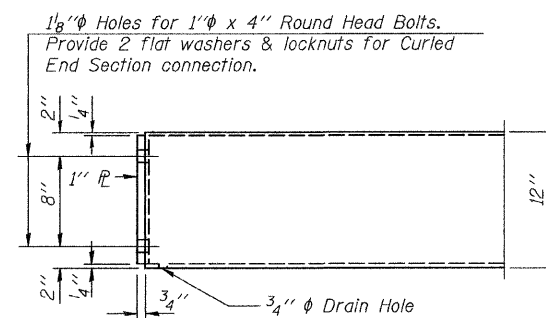
VIEW A-A
ROUND HEAD BOLT



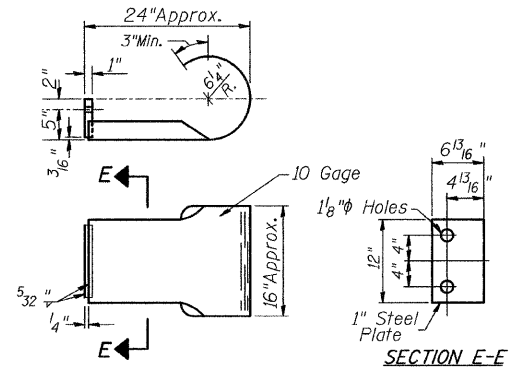
\mathbb{P} 1/2" x 11 1/2" x 5"



\mathbb{P} 1/2" x 7" x 6"



END OF RAIL DETAILS



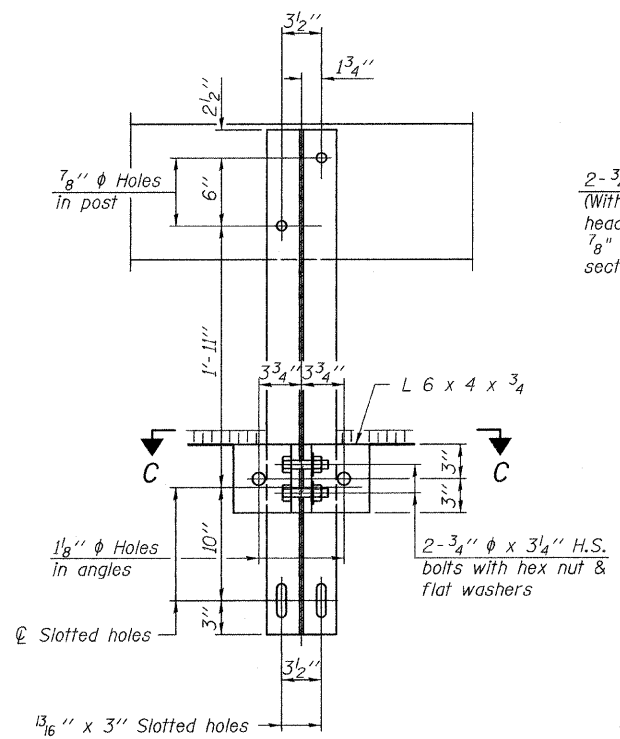
SECTION E-E
CURLED END SECTION

(4 Req'd) Cast Included with Steel Railing, Type S-1. Terminal Markers - Direct Applied shall be placed on end of each Curled End Section. (Each Corner)

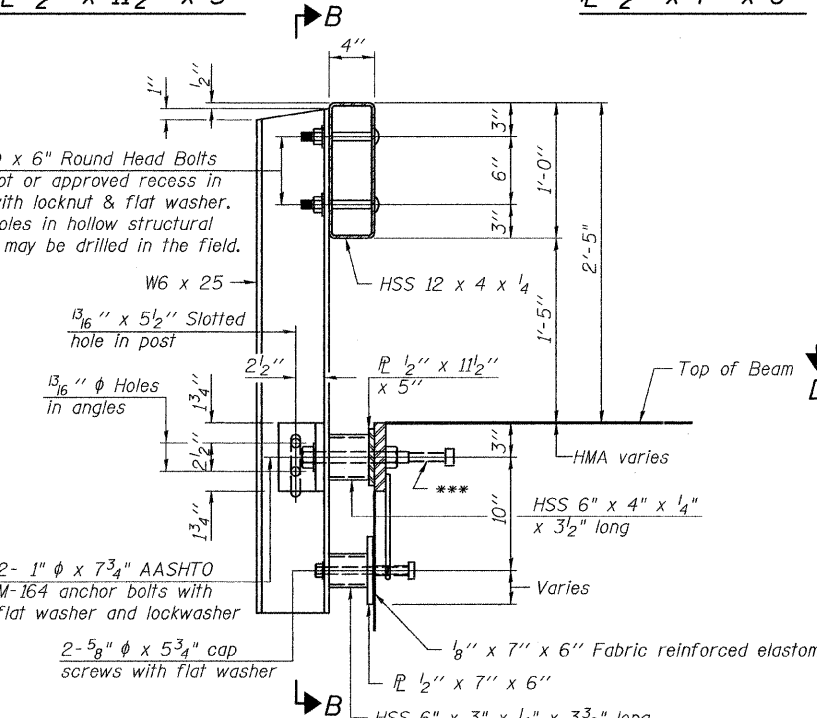
NOTES

All field drilled holes shall be coated with an approved zinc rich paint before erection. For multi-span bridges, sufficient 1/4" x 6" x 1'-2" galvanized steel shims shall be provided to align rail between adjacent spans. Cost included with Steel Railing, Type S-1. All steel rail elements shall be galvanized according to Article 509.05 of the Standard Specifications.

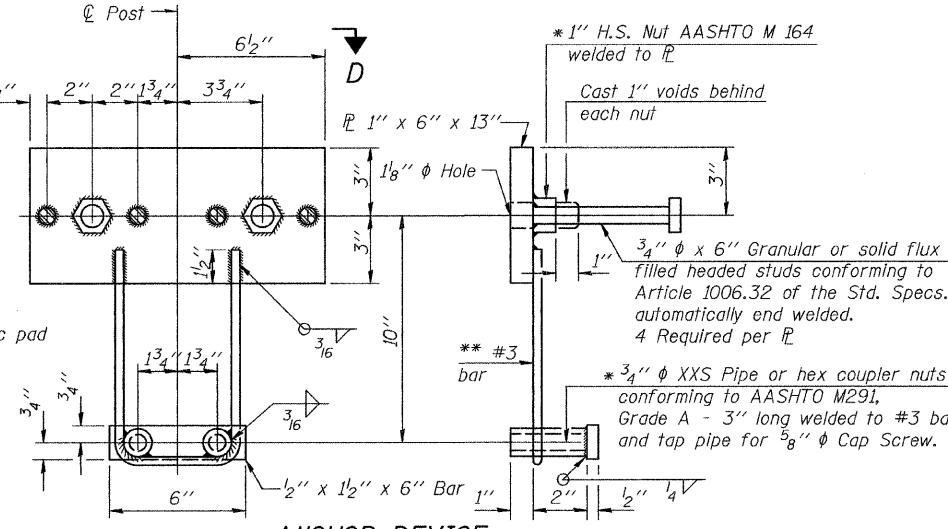
*** The studs of the anchor devices shall be placed below the top reinforcement bars and the outermost longitudinal reinforcement bar shall be placed directly above the studs of the rail post anchor device.



SECTION B-B

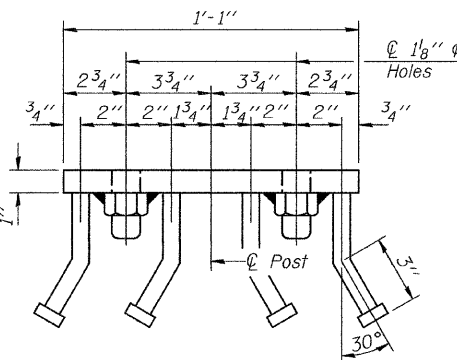


SECTION AT RAILING POST

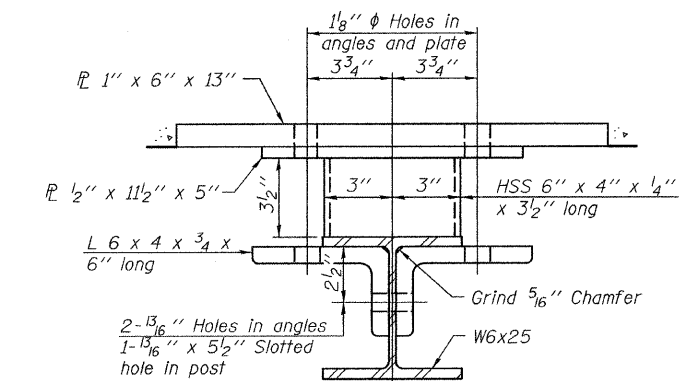


ANCHOR DEVICE

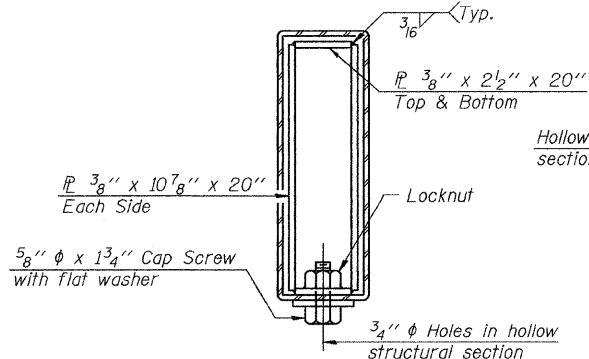
* Threaded areas shall be plugged or blocked off during casting of beam.



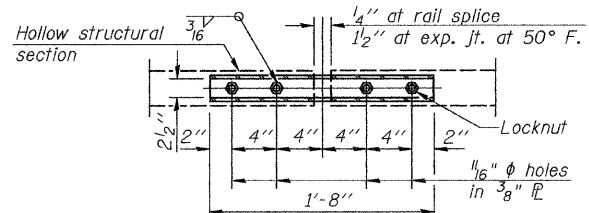
VIEW D-D



SECTION C-C



SECTIONS AT RAIL SPLICE



PLAN-BOTT. SPLICE P
TYPICAL

** Whenever the lower insert assemblies interfere with strand locations, the #3 bars shall be cut and adjusted in order to allow raising or lowering of the lower inserts. Maximum adjustment not to exceed 1/2 inch.

BILL OF MATERIAL

Item	Unit	Quantity
① Steel Railing, Type S-1	FOOT	106

① See Special Provisions

STEEL RAILING TYPE S-1
PIKE COUNTY
SECTION 09-00083-00-BR
C.H. 13 OVER BREWSTER CREEK

SHEET NO. 4	ROUTE NO.	SECTION	COUNTY	TOTAL SHEETS	SHEET NO.
7 SHEETS	CH 13	09-00083-00-BR	PIKE	26	10
		S.N. 075-3317		CONTRACT NO. 93550	
	FED. ROAD DIST. NO. 7	ILLINOIS		FED. AID PROJECT BRS-0597(103)	