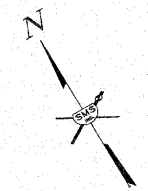
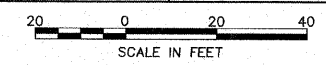


SECTION	COUNTY	TOTAL SHEETS	SHEET NO.
08-00021-00-PK	MADISON	12	5
CONTRACT NO. 97473			

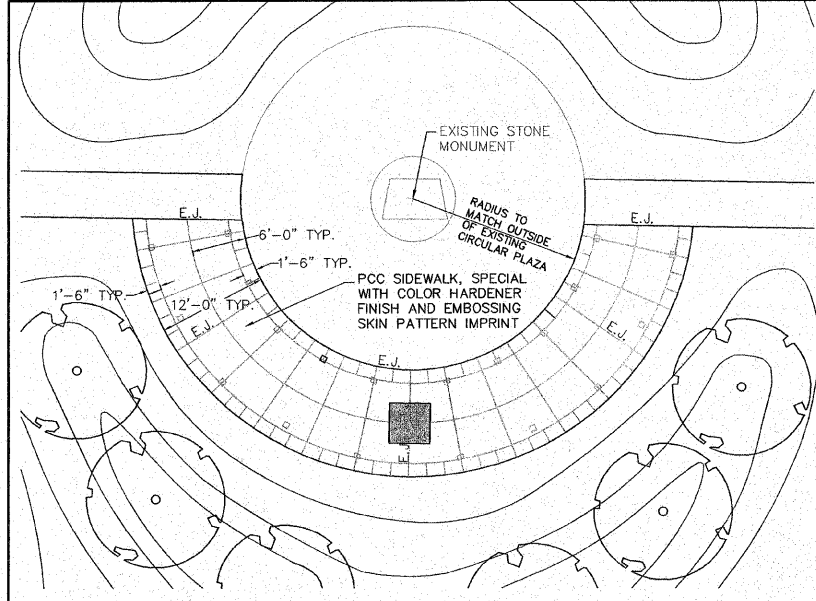


REVISIONS

SMS ENGINEERS
 Sheppard, Morgan & Schwaab, Inc.
 CONSULTING ENGINEERS AND LAND SURVEYORS
 215 Market Street, P.O. Box E, Alton, IL 62002, 618462-9755 E-mail: mail@smsengineers.com
 10 Central Industrial Drive, Suite 3, Granite City, IL 62040, 618977-6700 E-mail: mail@smsengineers.com
 DESIGN FIRM # 184-000992

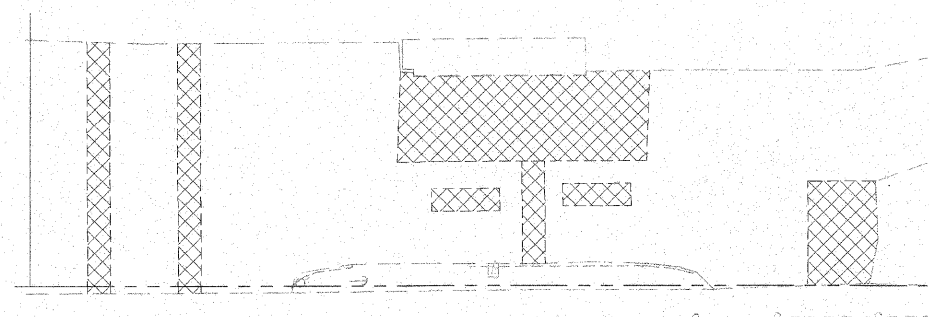
**IMPROVEMENT PLANS FOR HOFFMAN GARDENS
 VILLAGE OF GODFREY, ILLINOIS
 PROPOSED SITE PLAN**

DWG. NO.	HOFFMAN PROPOSED SITE.DWG
REF. BK.	PG.
JOB NO.	437560
DSN. BY:	SJW/DDT
DWN. BY:	BCS
CHK. BY:	SJW
DATE:	MAY, 2011
SCALE:	1"=20'
SHEET	C4 OF 12



PERGOLA PAVEMENT DETAIL
 1"=10'

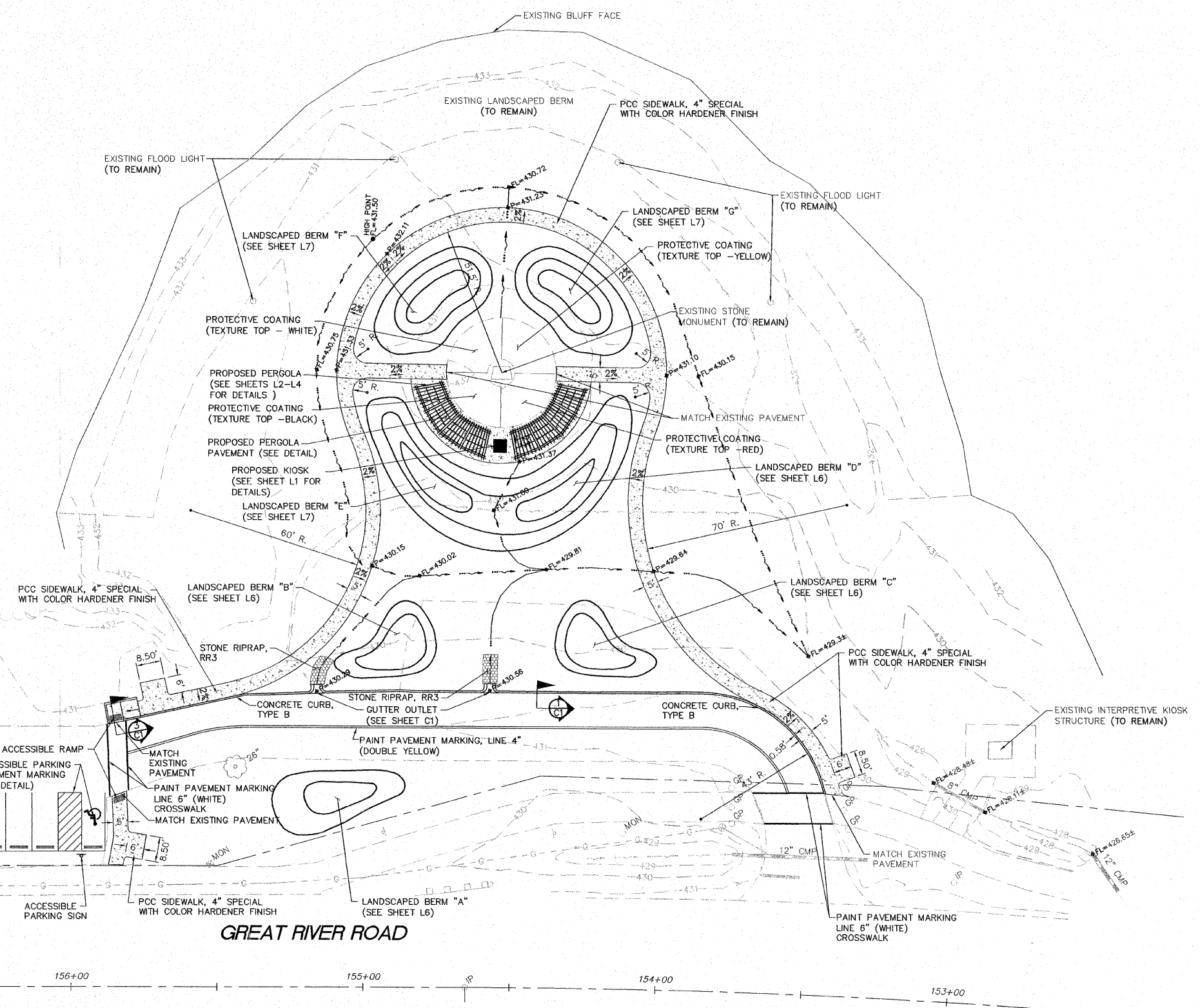
NOTE:
 LAYOUT JOINTS IN A SYMMETRICAL, RADIAL PATTERN AS INDICATED. PROVIDE PRE-FORMED EXPANSION JOINT FILLER BOARD AND JOINT SEALANT COLOR-MATCHED TO CONCRETE PAVEMENT COLOR AT EXPANSION JOINTS. PAY ITEM FOR PERGOLA PAVEMENT IS PORTLAND CEMENT CONCRETE, SPECIAL AND SHALL INCLUDE ALL CONCRETE, EMBOSSING, JOINTS, PERGOLA EMBEDS, ETC.



PAVEMENT PATCHING
 1"=20'

CLASS D PATCHES SHOWN THUS

NOTE: ALL PAVEMENT PATCHING TO BE DONE BY OTHERS AND IS NOT INCLUDED IN THIS CONTRACT. ALL PATCHING WILL BE COMPLETED PRIOR TO PAVEMENT MARKING.



GREAT RIVER ROAD



S:\land projects\GODFREY PAR 437560\HOFFMAN GARDENS\Hoffman Proposed Site.dwg, 6/10/2011 2:44:13 PM, bshpears, 120