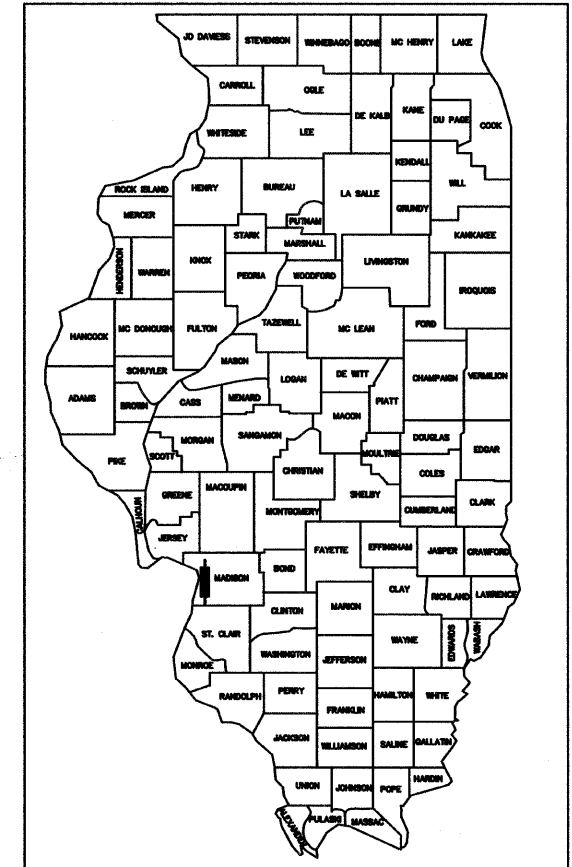


STATE OF ILLINOIS
 DEPARTMENT OF TRANSPORTATION
 DIVISION OF HIGHWAYS
 FEDERAL AID HIGHWAY
**LEWIS AND CLARK MEMORIAL TOWER
 TOWER LANDSCAPING**
 SECTION 10-00026-02-LS
 FEDERAL PROJECT NO. TE-00D8(142)
 VILLAGE OF HARTFORD
 MADISON COUNTY
 JOB C-98-353-10

| | | | |
|---------------------|---------|--------------|-----------|
| SECTION | COUNTY | TOTAL SHEETS | SHEET NO. |
| * | MADISON | 10 | 1 |
| FEDERAL AID PROJECT | | | |
| * 10-00026-02-LS | | | |
| CONTRACT NO. 97484 | | | |



LOCATION OF SECTION INDICATED THUS:-

| | |
|---|---|
| ILLINOIS DEPARTMENT OF TRANSPORTATION | |
| Approved | <u>11/16/11</u> <i>James Wilbann</i> Village of Hartford, Mayor |
| Passed | <u>11-18-11</u> <i>[Signature]</i> District #8 Engineer of Local Roads & Streets |
| Releasing for Bid Based on Limited Review | <u>11-18-11</u> <i>[Signature]</i> Acting Deputy Director of Highways, Region #5 Engineer |

PRINTED BY THE AUTHORITY OF
THE STATE OF ILLINOIS

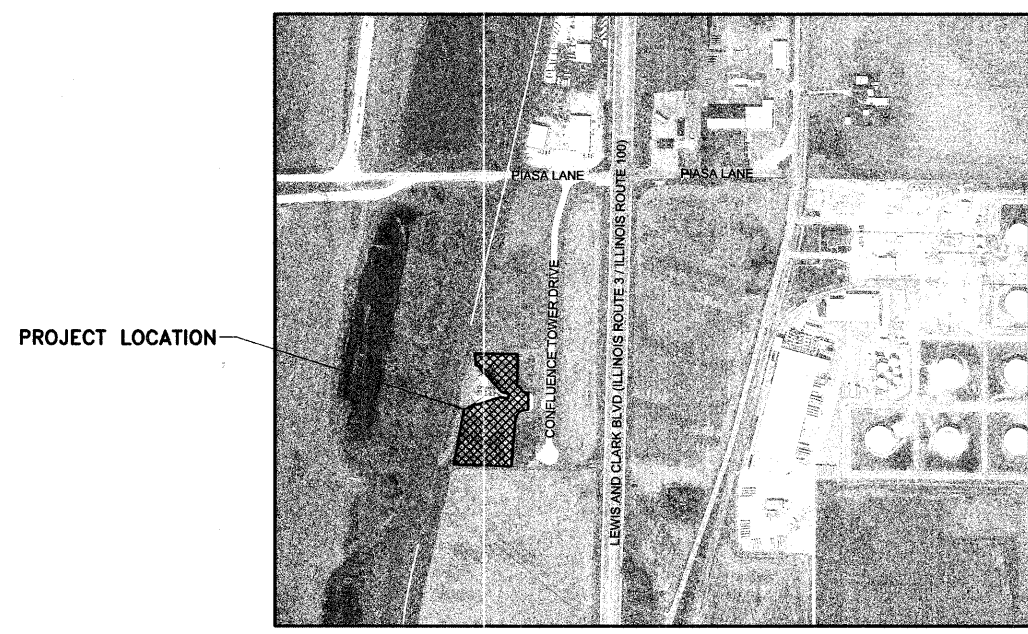
FOR UTILITY LOCATION PURPOSES, THIS PROJECT IS LOCATED IN SOUTHEAST QUARTER OF SECTION 9, TOWNSHIP 4 NORTH, RANGE 9 WEST OF THE 3RD PRINCIPAL MERIDIAN.

ILLINOIS STATE LAW REQUIRES A 48-HOUR NOTICE BE GIVEN TO UTILITIES BEFORE DIGGING. FIELD MARKING OF FACILITIES MAY BE OBTAINED BY CONTACTING J.U.L.I.E. (800) 892-0123 OR FOR NON-MEMBERS, UTILITY COMPANY DIRECTLY. AGENCIES KNOWN TO HAVE FACILITIES WITHIN THE PROJECT AREA ARE AS FOLLOWS:

- | | |
|---|---|
| HARTFORD PUBLIC WORKS DEPT. 140 WEST HAWTHORNE HARTFORD, IL 62048 (618) 251-2680 | ELECTRIC: AMEREN ILLINOIS 700 OAKWOOD AVENUE ALTON, IL 62002 (800) 325-7002 |
| AT&T 203 GOETHE COLLINGSVILLE, IL 62234 (618) 346-6400 | CHARTER COMMUNICATIONS 4767 SIGNATURE INDUSTRIAL DRIVE EDWARDSVILLE, IL 62025 (618) 307-5730 |
| GAS: AMEREN ILLINOIS 2600 N. CENTER STREET MARYVILLE, IL 62062 (618) 346-1244 | |

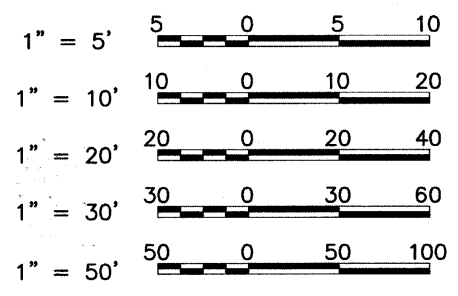
INDEX TO SHEETS

1. COVER SHEET, INDEX TO SHEETS
2. SUMMARY OF QUANTITIES, GENERAL NOTES, LEGEND & CONTROL POINTS, HIGHWAY STANDARDS
3. PROPOSED SITE PLAN
4. EXISTING SITE PLAN
5. EROSION CONTROL PLAN
6. DETAILS OF CONSTRUCTION
7. LANDSCAPE PLAN
8. LANDSCAPE DETAILS
9. BOARDWALK ENLARGEMENT PLAN AND DETAILS
10. IRRIGATION PLAN



LOCATION MAP
NOT TO SCALE
APPROXIMATELY 2.4 ACRES

SCALES



FULL SIZE PLANS HAVE BEEN PREPARED USING STANDARD ENGINEERING SCALES. REDUCED SIZED PLANS WILL NOT CONFORM TO STANDARD SCALES. IN MAKING MEASUREMENTS ON REDUCED PLANS THE ABOVE SCALES MAY BE USED.

FOR SHEETS 1-5

FOR SHEETS 6-10

SMS ENGINEERS Sheppard, Morgan & Schwaab, Inc.
 CONSULTING ENGINEERS AND LAND SURVEYORS
 215 Market Street, P.O. Box E, Alton, IL 62002 618/462-9755 E-mail: mail@smsengineers.com
 10 Central Industrial Drive, Suite 3, Granite City, IL 62040 618/977-8700 E-mail: mail@smsengineers.com
 DESIGN FIRM # 184-000992

FOR SHEETS 1-5

Larry D. Anderson
 DATE SIGNED 11/16/11
 EXPIRATION DATE 11/30/18

FOR SHEETS 6-10

Noel T. Fehr
 DATE SIGNED 11/16/11
 EXPIRATION DATE 8/31/13