

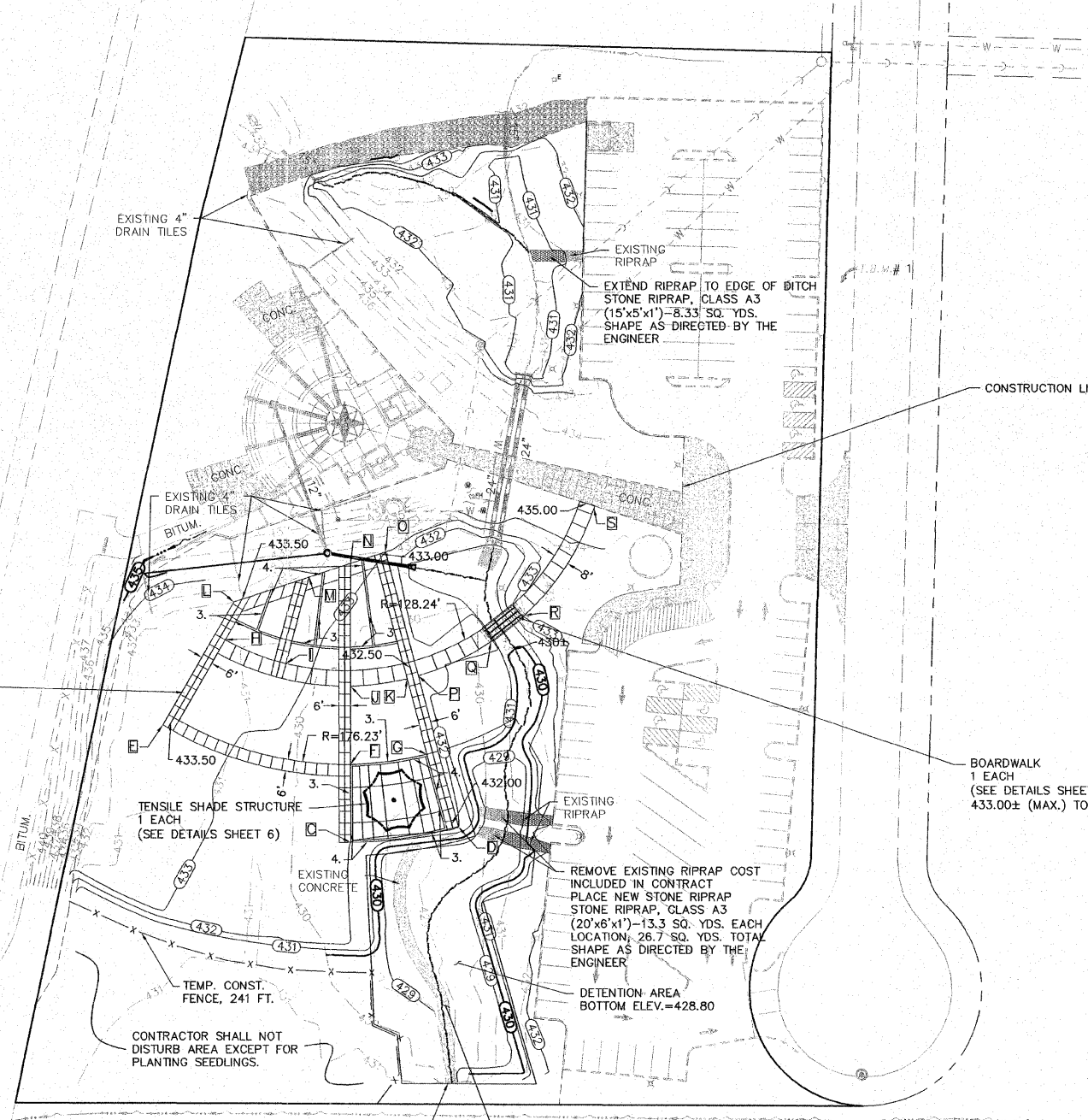
LEGEND

- EXISTING POWER POLE - □
- EXISTING GUY WIRE - —
- EXISTING ELECTRIC SPICE BOX - □E
- EXISTING WATER VALVE - □W
- EXISTING FIRE HYDRANT - □F
- EXISTING SANITARY MANHOLE TOP - □
- EXISTING RIGHT-OF-WAY
- EXISTING EASEMENT
- EXISTING SANITARY SEWER
- EXISTING STORM SEWER
- EXISTING CULVERT
- EXISTING POND, LAKE, BODY OF WATER, ETC.
- EXISTING DITCH
- EXISTING FENCE
- EXISTING WATER

- NOTES:**
- CONNECT EXISTING DRAIN TO PIPE DRAINS 4" WITH TEE. COST INCLUDED IN PIPE DRAINS 4".
 - CONNECT 2 EXISTING DRAINS TO INLET, TYPE B, TYPE 1 FRAME, CLOSED LID
 - CONCRETE CURB (SPECIAL), TOTAL QUANTITY = 347 FT. SEE SHEET 6
 - PROPOSED CONCRETE CURB (SPECIAL) SHALL BE CONSTRUCTED FLUSH WITH THE SIDEWALK. EXPANSION JOINTS SHALL BE PLACED ON BOTH SIDES OF THE CURB WHEN IN CONTACT WITH THE CURB.

LAYOUT COORDINATES		
NUMBER	NORTHING	EASTING
A	4,022.6397	3,567.7309
B	4,030.7809	3,623.3937
C	4,084.8258	3,478.8908
D	4,062.6444	3,567.6946
E	4,067.8695	3,607.2440
F	4,126.3725	3,502.9275
G	4,114.2325	3,534.2503
H	4,102.6411	3,567.6584
I	4,106.5033	3,596.8920
J	4,145.9706	3,507.3341
K	4,158.8555	3,546.2068
L	4,165.9469	3,567.6011
M	4,171.9059	3,585.5788
N	4,108.0562	3,602.6875
O	4,125.5802	3,640.2491
P	4,139.2459	3,657.4958
Q	4,194.7813	3,693.4561

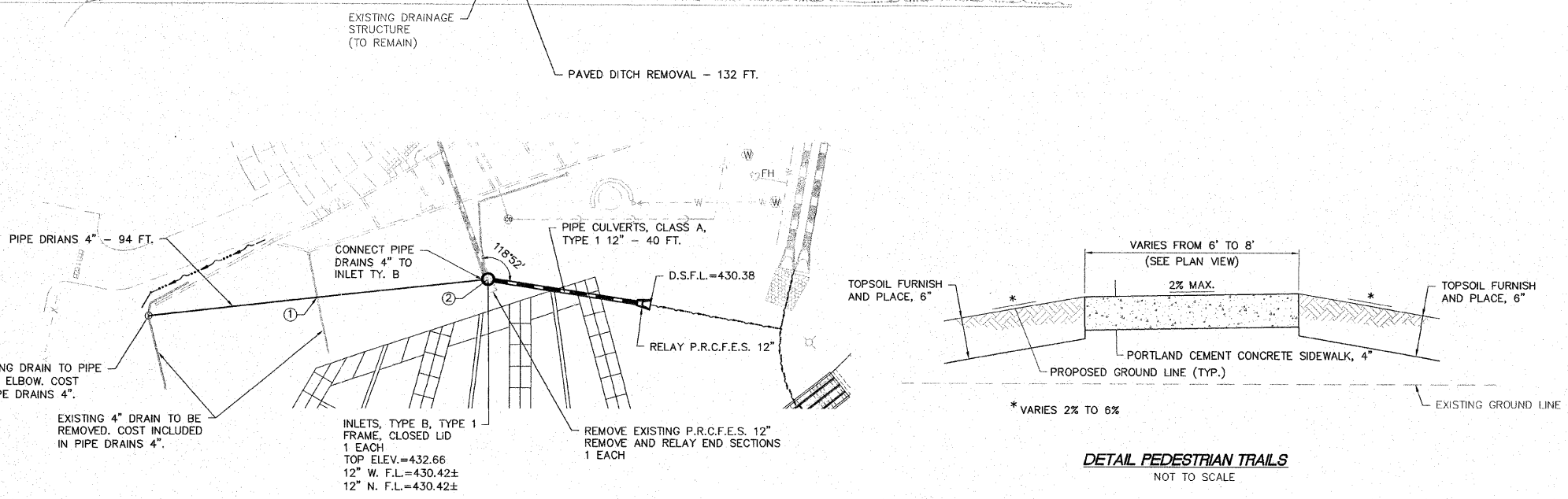
P.C.C. SIDEWALK 4" - 6543 SQ. FT.



EARTHWORK SCHEDULE					
LOCATION	EARTH EXCAVATION (CU. YD.)	EARTH EXCAVATION ADJUSTED FOR SHRINKAGE * (CU. YD.)	EMBANKMENT (FILL) (CU. YD.)	EARTHWORK BALANCE WASTE (+) OR SHORTAGE (-) (CU. YD.)	FURNISHED EXCAVATION (CU. YD.)
TOWER GROUNDS	912	684	2240	-1556	1556
**	912	684	2240	-1556	1556
TOTAL	0	0	0	0	0

* ASSUME SHRINKAGE FACTOR = 25%

** THE VILLAGE OF HARTFORD WILL PERFORM THE EARTHWORK EXCAVATION AND FURNISHED EXCAVATION FOR THE PROJECT SITE. THE VILLAGE WILL PERFORM THE WORK PRIOR TO THE CONTRACTOR STARTING.



DETAIL PEDESTRIAN TRAILS
NOT TO SCALE

T.B.M. #1 - IRON PIN 365.1' NORTH OF CENTER OF CUL-DE-SAC AND 21.2' WEST OF CENTER LINE, ELEV. 437.18

STORM SEWER PLAN
1"=20'

REVISIONS

SMS ENGINEERS
Sheppard, Morgan & Schwaab, Inc.
CONSULTING ENGINEERS AND LAND SURVEYORS
216 Market Street, P.O. Box E, Alton, IL 62002 6184623915 E-mail: ms@smsengineers.com
10 Centre Industrial Drive, Suite 3, Granite City, IL 62040 618671-8100 E-mail: ms@smsengineers.com
DESIGN FIRM # 184-000992

VILLAGE OF HARTFORD, ILLINOIS
LEWIS AND CLARK MEMORIAL TOWER
TOWER LANDSCAPING
SECTION 10-00026-02-LS
PROPOSED SITE PLAN