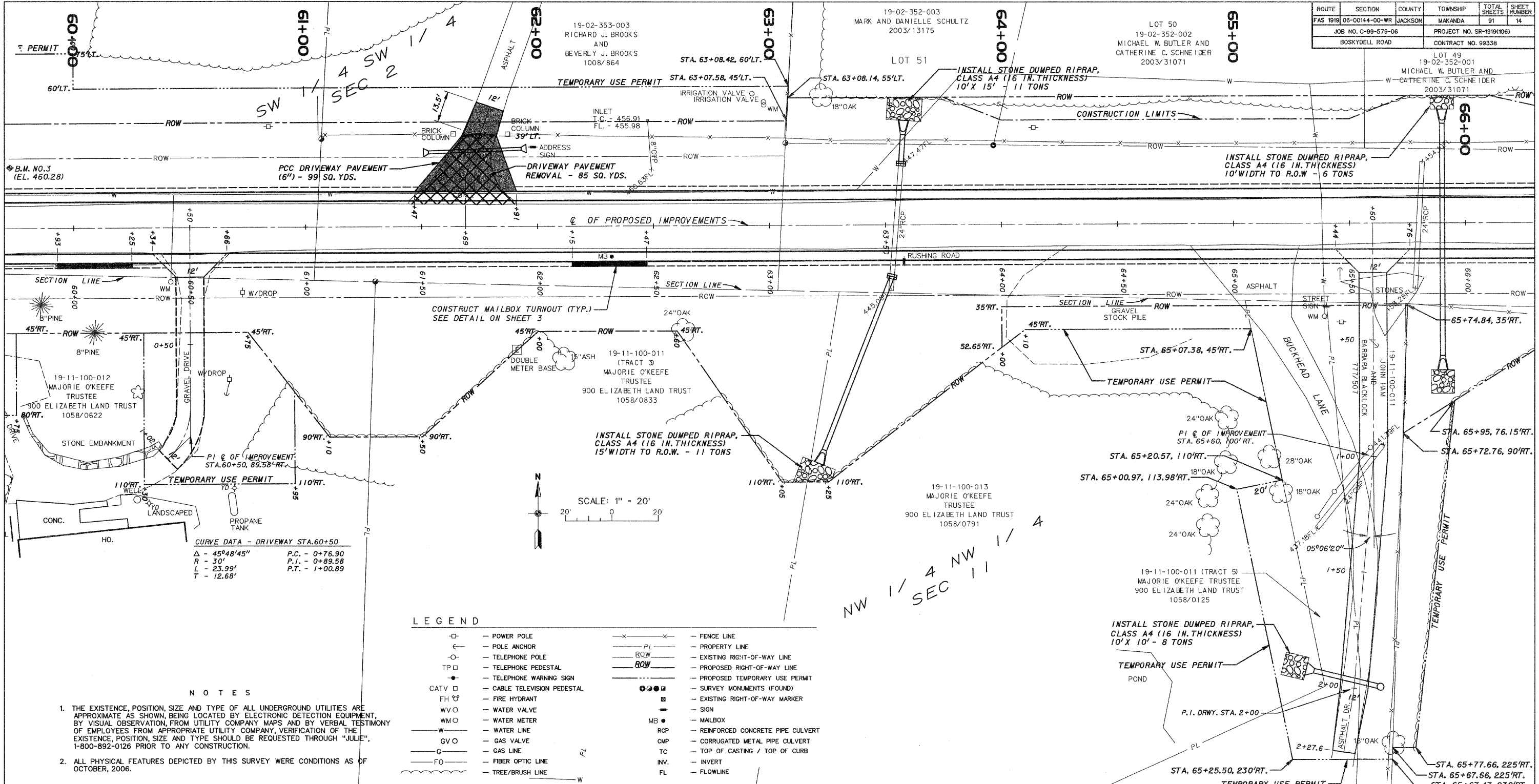


| ROUTE | SECTION | COUNTY | TOWNSHIP | TOTAL SHEETS | SHEET NUMBER |
|---------------------|----------------|---------|----------|--------------------------|--------------|
| FAS 1919 | 06-00144-00-WR | JACKSON | MAKANDA | 91 | 14 |
| JOB NO. C-99-579-06 | | | | PROJECT NO. SR-1919(106) | |
| BOSKYDELL ROAD | | | | CONTRACT NO. 99338 | |



CURVE DATA - DRIVEWAY STA. 60+50

| | |
|---------------|----------------|
| Δ - 45°48'45" | P.C. - 0+76.90 |
| R - 30' | P.T. - 0+89.58 |
| L - 23.99' | P.T. - 1+00.89 |
| T - 12.68' | |

LEGEND

| | | | |
|--------|---------------------------|---------|----------------------------------|
| ⊕ | POWER POLE | ⊗ | FENCE LINE |
| ⊙ | POLE ANCHOR | — PL — | PROPERTY LINE |
| ⊖ | TELEPHONE POLE | — ROW — | EXISTING RIGHT-OF-WAY LINE |
| TP ⊕ | TELEPHONE PEDESTAL | — ROW — | PROPOSED RIGHT-OF-WAY LINE |
| ⊖ | TELEPHONE WARNING SIGN | --- | PROPOSED TEMPORARY USE PERMIT |
| CATV ⊕ | CABLE TELEVISION PEDESTAL | ● ● ● ● | SURVEY MONUMENTS (FOUND) |
| FH ⊕ | FIRE HYDRANT | ⊕ | EXISTING RIGHT-OF-WAY MARKER |
| WVO | WATER VALVE | MB ● | MAILBOX |
| WMO | WATER METER | RCP | REINFORCED CONCRETE PIPE CULVERT |
| W | WATER LINE | CMP | CORRUGATED METAL PIPE CULVERT |
| GV | GAS VALVE | TC | TOP OF CASTING / TOP OF CURB |
| G | GAS LINE | INV. | INVERT |
| FO | FIBER OPTIC LINE | FL | FLOWLINE |
| — | TREE/BRUSH LINE | | |

NOTES

- THE EXISTENCE, POSITION, SIZE AND TYPE OF ALL UNDERGROUND UTILITIES ARE APPROXIMATE AS SHOWN, BEING LOCATED BY ELECTRONIC DETECTION EQUIPMENT, BY VISUAL OBSERVATION, FROM UTILITY COMPANY MAPS AND BY VERBAL TESTIMONY OF EMPLOYEES FROM APPROPRIATE UTILITY COMPANY. VERIFICATION OF THE EXISTENCE, POSITION, SIZE AND TYPE SHOULD BE REQUESTED THROUGH "JULIE", 1-800-892-0126 PRIOR TO ANY CONSTRUCTION.
- ALL PHYSICAL FEATURES DEPICTED BY THIS SURVEY WERE CONDITIONS AS OF OCTOBER, 2006.

