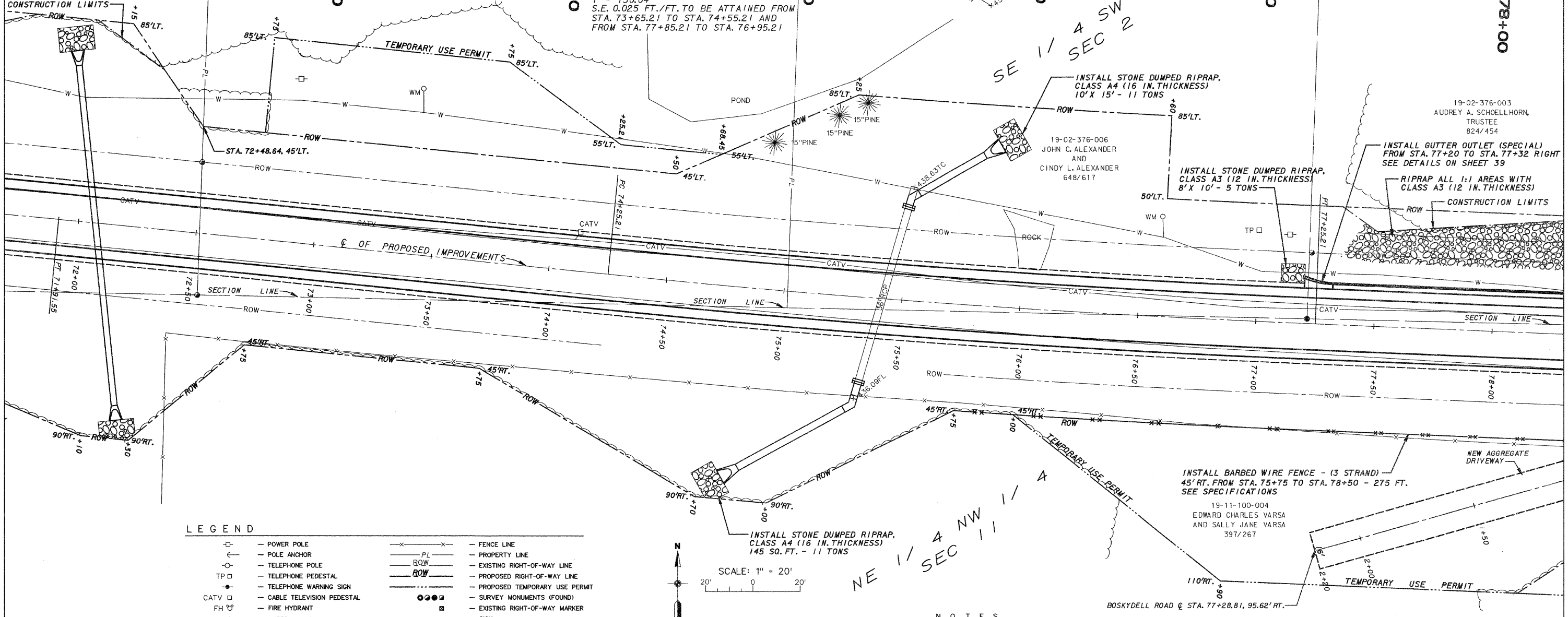


19-02-376-002
 JASON E. RUSHING
 AND
 CHRISTINA M. RUSHING
 2002/15355

19-02-376-005
 DAVID ALEXANDER

CURVE NO. 5 - 50 MPH
 $\Delta = 03^{\circ}25'00''$ P.C. - 74+25.21
 $R = 5,030.73'$ P.I. - 75+75.25
 $L = 300.00'$ P.T. - 77+25.21
 $T = 150.04'$
 S.E. 0.025 FT./FT. TO BE ATTAINED FROM
 STA. 73+65.21 TO STA. 74+55.21 AND
 FROM STA. 77+85.21 TO STA. 76+95.21

ROUTE	SECTION	COUNTY	TOWNSHIP	TOTAL SHEETS	SHEET NUMBER
FAS 1919	06-00144-00-WR	JACKSON	MAKANDA	91	16
JOB NO. C-99-579-06				PROJECT NO. SR-1919(106)	
BOSKYDELL ROAD				CONTRACT NO. 99338	



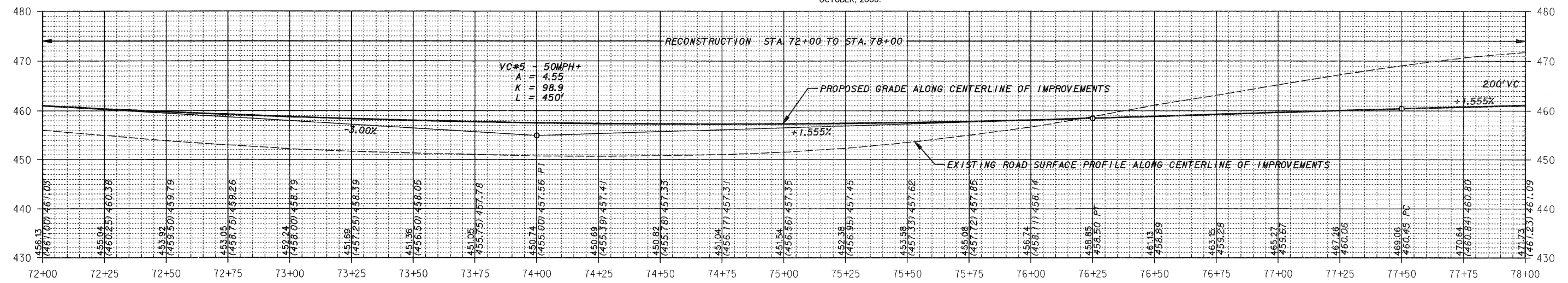
LEGEND

	POWER POLE		FENCE LINE
	POLE ANCHOR		PROPERTY LINE
	TELEPHONE POLE		EXISTING RIGHT-OF-WAY LINE
	TELEPHONE PEDESTAL		PROPOSED RIGHT-OF-WAY LINE
	TELEPHONE WARNING SIGN		PROPOSED TEMPORARY USE PERMIT
	CABLE TELEVISION PEDESTAL		SURVEY MONUMENTS (FOUND)
	FIRE HYDRANT		EXISTING RIGHT-OF-WAY MARKER
	WATER VALVE		SIGN
	WATER METER		MAILBOX
	WATER LINE		REINFORCED CONCRETE PIPE CULVERT
	GAS VALVE		CORRUGATED METAL PIPE CULVERT
	GAS LINE		TOP OF CASTING / TOP OF CURB
	FIBER OPTIC LINE		INVERT
	TREE/BRUSH LINE		FLOWLINE



SCALE: 1" = 20'
 20' 0 20'

- NOTES**
- THE EXISTENCE, POSITION, SIZE AND TYPE OF ALL UNDERGROUND UTILITIES ARE APPROXIMATE AS SHOWN, BEING LOCATED BY ELECTRONIC DETECTION EQUIPMENT, BY VISUAL OBSERVATION, FROM UTILITY COMPANY MAPS AND BY VERBAL TESTIMONY OF EMPLOYEES FROM APPROPRIATE UTILITY COMPANY. VERIFICATION OF THE EXISTENCE, POSITION, SIZE AND TYPE SHOULD BE REQUESTED THROUGH "JULIE", 1-800-892-0126 PRIOR TO ANY CONSTRUCTION.
 - ALL PHYSICAL FEATURES DEPICTED BY THIS SURVEY WERE CONDITIONS AS OF OCTOBER, 2006.



JACKSON COUNTY HIGHWAY DEPARTMENT	
JACKSON COUNTY, ILLINOIS	
BOSKYDELL ROAD	
PLAN AND PROFILE - STA. 72+00 TO STA. 78+00	