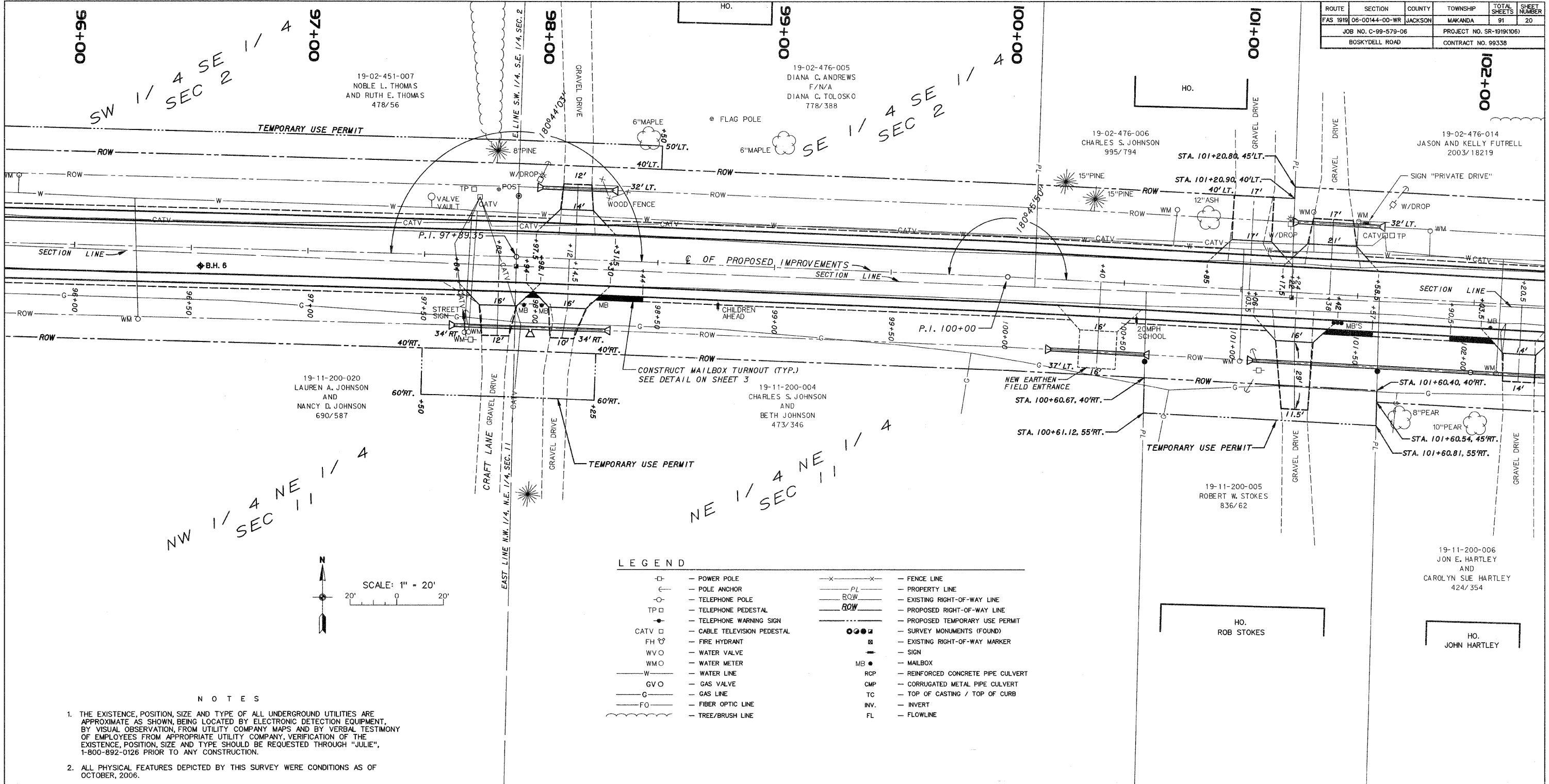
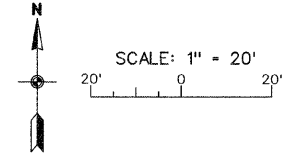


ROUTE	SECTION	COUNTY	TOWNSHIP	TOTAL SHEETS	SHEET NUMBER
FAS 1919	06-00144-00-WR	JACKSON	MAKANDA	91	20
JOB NO. C-99-579-06			PROJECT NO. SR-1919(106)		
BOSKYDELL ROAD			CONTRACT NO. 99338		



NW 1/4 SEC 11
NE 1/4 SEC 11



LEGEND

□	POWER POLE	—x—x—	FENCE LINE
○	POLE ANCHOR	—PL—	PROPERTY LINE
○	TELEPHONE POLE	—ROW—	EXISTING RIGHT-OF-WAY LINE
TP □	TELEPHONE PEDESTAL	—ROW—	PROPOSED RIGHT-OF-WAY LINE
●	TELEPHONE WARNING SIGN	—ROW—	PROPOSED TEMPORARY USE PERMIT
CATV □	CABLE TELEVISION PEDESTAL	●●●●	SURVEY MONUMENTS (FOUND)
FH ○	FIRE HYDRANT	■	EXISTING RIGHT-OF-WAY MARKER
WVO ○	WATER VALVE	—	SIGN
WMO ○	WATER METER	MB ●	MAILBOX
W —	WATER LINE	RCP	REINFORCED CONCRETE PIPE CULVERT
GVO —	GAS VALVE	CMP	CORRUGATED METAL PIPE CULVERT
G —	GAS LINE	TC	TOP OF CASTING / TOP OF CURB
FO —	FIBER OPTIC LINE	INV.	INVERT
~	TREE/BRUSH LINE	FL	FLOWLINE

NOTES

1. THE EXISTENCE, POSITION, SIZE AND TYPE OF ALL UNDERGROUND UTILITIES ARE APPROXIMATE AS SHOWN, BEING LOCATED BY ELECTRONIC DETECTION EQUIPMENT, BY VISUAL OBSERVATION, FROM UTILITY COMPANY MAPS AND BY VERBAL TESTIMONY OF EMPLOYEES FROM APPROPRIATE UTILITY COMPANY. VERIFICATION OF THE EXISTENCE, POSITION, SIZE AND TYPE SHOULD BE REQUESTED THROUGH "JULIE", 1-800-892-0126 PRIOR TO ANY CONSTRUCTION.
2. ALL PHYSICAL FEATURES DEPICTED BY THIS SURVEY WERE CONDITIONS AS OF OCTOBER, 2006.

