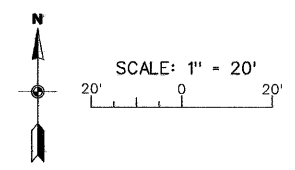
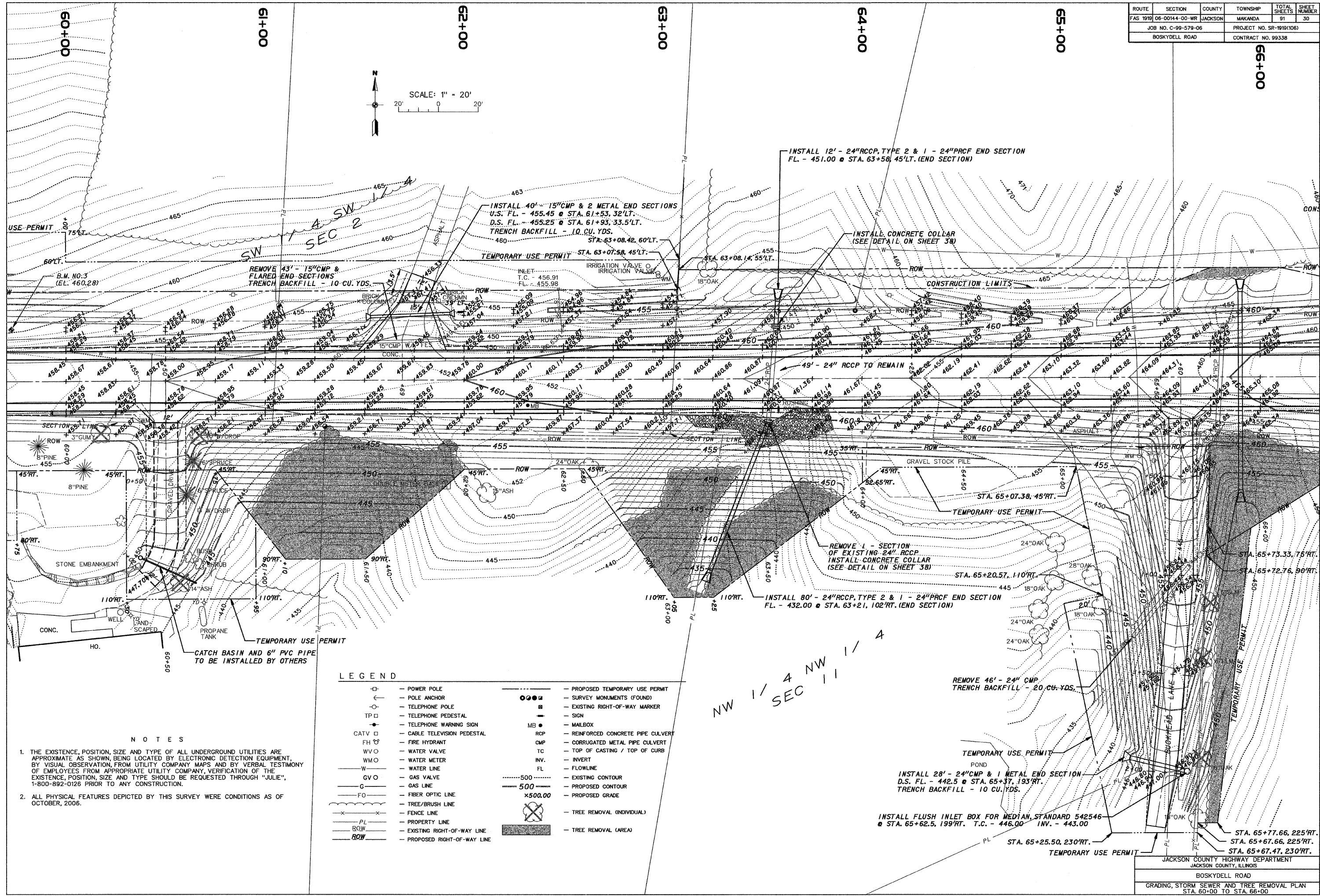


ROUTE	SECTION	COUNTY	TOWNSHIP	TOTAL SHEETS	SHEET NUMBER
FAS 1919	08-00144-00-WR	JACKSON	MAKANDA	91	30
JOB NO. C-99-579-06			PROJECT NO. SR-1919(106)		
BOSKYDELL ROAD			CONTRACT NO. 99338		



USE PERMIT

REMOVE 43' - 15" CMP & FLARED END SECTIONS TRENCH BACKFILL - 10 CU. YDS.

INSTALL 40' - 15" CMP & 2 METAL END SECTIONS U.S. FL. - 455.45 @ STA. 61+53, 32' LT. D.S. FL. - 455.25 @ STA. 61+93, 33.5' LT. TRENCH BACKFILL - 10 CU. YDS. STA. 63+08.42, 60' LT.

INSTALL 12' - 24" RCCP, TYPE 2 & 1 - 24" PRCF END SECTION FL. - 451.00 @ STA. 63+58, 45' LT. (END SECTION)

INSTALL CONCRETE COLLAR (SEE DETAIL ON SHEET 38)

TEMPORARY USE PERMIT STA. 63+07.58, 45' LT.

B.M. NO. 3 (EL. 460.28)

REMOVE 43' - 15" CMP & FLARED END SECTIONS TRENCH BACKFILL - 10 CU. YDS.

INLET T.C. - 456.91 FL. - 455.98

INSTALL 12' - 24" RCCP, TYPE 2 & 1 - 24" PRCF END SECTION FL. - 451.00 @ STA. 63+58, 45' LT. (END SECTION)

INSTALL CONCRETE COLLAR (SEE DETAIL ON SHEET 38)

SECTION LINE

REMOVE 43' - 15" CMP & FLARED END SECTIONS TRENCH BACKFILL - 10 CU. YDS.

INSTALL 40' - 15" CMP & 2 METAL END SECTIONS U.S. FL. - 455.45 @ STA. 61+53, 32' LT. D.S. FL. - 455.25 @ STA. 61+93, 33.5' LT. TRENCH BACKFILL - 10 CU. YDS. STA. 63+08.42, 60' LT.

INSTALL 12' - 24" RCCP, TYPE 2 & 1 - 24" PRCF END SECTION FL. - 451.00 @ STA. 63+58, 45' LT. (END SECTION)

INSTALL CONCRETE COLLAR (SEE DETAIL ON SHEET 38)

SECTION LINE

REMOVE 43' - 15" CMP & FLARED END SECTIONS TRENCH BACKFILL - 10 CU. YDS.

INSTALL 40' - 15" CMP & 2 METAL END SECTIONS U.S. FL. - 455.45 @ STA. 61+53, 32' LT. D.S. FL. - 455.25 @ STA. 61+93, 33.5' LT. TRENCH BACKFILL - 10 CU. YDS. STA. 63+08.42, 60' LT.

INSTALL 12' - 24" RCCP, TYPE 2 & 1 - 24" PRCF END SECTION FL. - 451.00 @ STA. 63+58, 45' LT. (END SECTION)

INSTALL CONCRETE COLLAR (SEE DETAIL ON SHEET 38)

SECTION LINE

REMOVE 43' - 15" CMP & FLARED END SECTIONS TRENCH BACKFILL - 10 CU. YDS.

INSTALL 40' - 15" CMP & 2 METAL END SECTIONS U.S. FL. - 455.45 @ STA. 61+53, 32' LT. D.S. FL. - 455.25 @ STA. 61+93, 33.5' LT. TRENCH BACKFILL - 10 CU. YDS. STA. 63+08.42, 60' LT.

INSTALL 12' - 24" RCCP, TYPE 2 & 1 - 24" PRCF END SECTION FL. - 451.00 @ STA. 63+58, 45' LT. (END SECTION)

INSTALL CONCRETE COLLAR (SEE DETAIL ON SHEET 38)

SECTION LINE

REMOVE 43' - 15" CMP & FLARED END SECTIONS TRENCH BACKFILL - 10 CU. YDS.

INSTALL 40' - 15" CMP & 2 METAL END SECTIONS U.S. FL. - 455.45 @ STA. 61+53, 32' LT. D.S. FL. - 455.25 @ STA. 61+93, 33.5' LT. TRENCH BACKFILL - 10 CU. YDS. STA. 63+08.42, 60' LT.

INSTALL 12' - 24" RCCP, TYPE 2 & 1 - 24" PRCF END SECTION FL. - 451.00 @ STA. 63+58, 45' LT. (END SECTION)

INSTALL CONCRETE COLLAR (SEE DETAIL ON SHEET 38)

SECTION LINE

REMOVE 43' - 15" CMP & FLARED END SECTIONS TRENCH BACKFILL - 10 CU. YDS.

INSTALL 40' - 15" CMP & 2 METAL END SECTIONS U.S. FL. - 455.45 @ STA. 61+53, 32' LT. D.S. FL. - 455.25 @ STA. 61+93, 33.5' LT. TRENCH BACKFILL - 10 CU. YDS. STA. 63+08.42, 60' LT.

INSTALL 12' - 24" RCCP, TYPE 2 & 1 - 24" PRCF END SECTION FL. - 451.00 @ STA. 63+58, 45' LT. (END SECTION)

INSTALL CONCRETE COLLAR (SEE DETAIL ON SHEET 38)

SECTION LINE

REMOVE 43' - 15" CMP & FLARED END SECTIONS TRENCH BACKFILL - 10 CU. YDS.

INSTALL 40' - 15" CMP & 2 METAL END SECTIONS U.S. FL. - 455.45 @ STA. 61+53, 32' LT. D.S. FL. - 455.25 @ STA. 61+93, 33.5' LT. TRENCH BACKFILL - 10 CU. YDS. STA. 63+08.42, 60' LT.

INSTALL 12' - 24" RCCP, TYPE 2 & 1 - 24" PRCF END SECTION FL. - 451.00 @ STA. 63+58, 45' LT. (END SECTION)

INSTALL CONCRETE COLLAR (SEE DETAIL ON SHEET 38)

SECTION LINE

REMOVE 43' - 15" CMP & FLARED END SECTIONS TRENCH BACKFILL - 10 CU. YDS.

INSTALL 40' - 15" CMP & 2 METAL END SECTIONS U.S. FL. - 455.45 @ STA. 61+53, 32' LT. D.S. FL. - 455.25 @ STA. 61+93, 33.5' LT. TRENCH BACKFILL - 10 CU. YDS. STA. 63+08.42, 60' LT.

INSTALL 12' - 24" RCCP, TYPE 2 & 1 - 24" PRCF END SECTION FL. - 451.00 @ STA. 63+58, 45' LT. (END SECTION)

INSTALL CONCRETE COLLAR (SEE DETAIL ON SHEET 38)

SECTION LINE

REMOVE 43' - 15" CMP & FLARED END SECTIONS TRENCH BACKFILL - 10 CU. YDS.

INSTALL 40' - 15" CMP & 2 METAL END SECTIONS U.S. FL. - 455.45 @ STA. 61+53, 32' LT. D.S. FL. - 455.25 @ STA. 61+93, 33.5' LT. TRENCH BACKFILL - 10 CU. YDS. STA. 63+08.42, 60' LT.

INSTALL 12' - 24" RCCP, TYPE 2 & 1 - 24" PRCF END SECTION FL. - 451.00 @ STA. 63+58, 45' LT. (END SECTION)

INSTALL CONCRETE COLLAR (SEE DETAIL ON SHEET 38)

SECTION LINE

REMOVE 43' - 15" CMP & FLARED END SECTIONS TRENCH BACKFILL - 10 CU. YDS.

INSTALL 40' - 15" CMP & 2 METAL END SECTIONS U.S. FL. - 455.45 @ STA. 61+53, 32' LT. D.S. FL. - 455.25 @ STA. 61+93, 33.5' LT. TRENCH BACKFILL - 10 CU. YDS. STA. 63+08.42, 60' LT.

INSTALL 12' - 24" RCCP, TYPE 2 & 1 - 24" PRCF END SECTION FL. - 451.00 @ STA. 63+58, 45' LT. (END SECTION)

INSTALL CONCRETE COLLAR (SEE DETAIL ON SHEET 38)

LEGEND

- | | | | |
|--------|----------------------------|---------|----------------------------------|
| □ | POWER POLE | ○ | PROPOSED TEMPORARY USE PERMIT |
| ○ | POLE ANCHOR | ● | SURVEY MONUMENTS (FOUND) |
| ○ | TELEPHONE POLE | ■ | EXISTING RIGHT-OF-WAY MARKER |
| TP □ | TELEPHONE PEDESTAL | — | SIGN |
| ○ | TELEPHONE WARNING SIGN | MB ● | MAILBOX |
| CATV □ | CABLE TELEVISION PEDESTAL | RCP | REINFORCED CONCRETE PIPE CULVERT |
| FH □ | FIRE HYDRANT | CMP | CORRUGATED METAL PIPE CULVERT |
| WV ○ | WATER VALVE | TC | TOP OF CASTING / TOP OF CURB |
| WMO | WATER METER | INV. | INVERT |
| W | WATER LINE | FL | FLOWLINE |
| GO ○ | GAS VALVE | 500 | EXISTING CONTOUR |
| G | GAS LINE | 500 | PROPOSED CONTOUR |
| FO | FIBER OPTIC LINE | x500.00 | PROPOSED GRADE |
| ~ | TREE/BRUSH LINE | ⊗ | TREE REMOVAL (INDIVIDUAL) |
| — | FENCE LINE | ⊗ | TREE REMOVAL (AREA) |
| PL | PROPERTY LINE | | |
| ROW | EXISTING RIGHT-OF-WAY LINE | | |
| ROW | PROPOSED RIGHT-OF-WAY LINE | | |

NOTES

- THE EXISTENCE, POSITION, SIZE AND TYPE OF ALL UNDERGROUND UTILITIES ARE APPROXIMATE AS SHOWN, BEING LOCATED BY ELECTRONIC DETECTION EQUIPMENT, BY VISUAL OBSERVATION, FROM UTILITY COMPANY MAPS AND BY VERBAL TESTIMONY OF EMPLOYEES FROM APPROPRIATE UTILITY COMPANY. VERIFICATION OF THE EXISTENCE, POSITION, SIZE AND TYPE SHOULD BE REQUESTED THROUGH "JULIE", 1-800-892-0126 PRIOR TO ANY CONSTRUCTION.
- ALL PHYSICAL FEATURES DEPICTED BY THIS SURVEY WERE CONDITIONS AS OF OCTOBER, 2006.