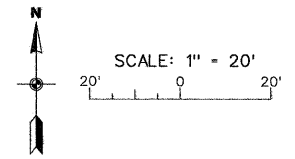


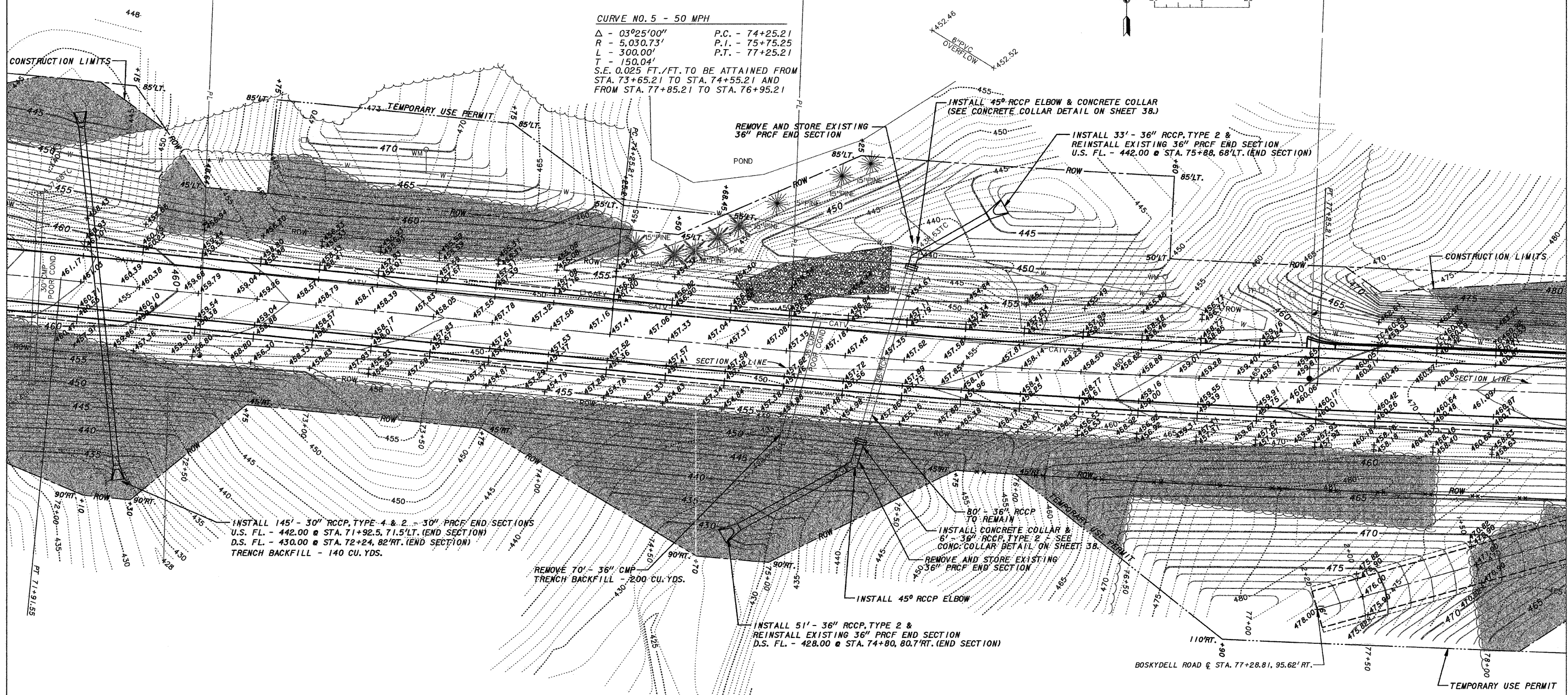
ROUTE	SECTION	COUNTY	TOWNSHIP	TOTAL SHEETS	SHEET NUMBER
FAS 1919	06-00144-00-WR	JACKSON	MAKANDA	91	32
JOB NO. C-99-579-06			PROJECT NO. SR-1919(106)		
BOSKYDELL ROAD			CONTRACT NO. 99338		

72+00 73+00 74+00 75+00 76+00 77+00 78+00

SE 1/4 SW 1/4
SEC 2



CURVE NO. 5 - 50 MPH
 $\Delta = 03^{\circ}25'00''$ P.C. - 74+25.21
 $R = 5,030.73'$ P.I. - 75+75.25
 $L = 300.00'$ P.T. - 77+25.21
 $T = 150.04'$
 S.E. 0.025 FT./FT. TO BE ATTAINED FROM
 STA. 73+65.21 TO STA. 74+55.21 AND
 FROM STA. 77+85.21 TO STA. 76+95.21



LEGEND

	POWER POLE		PROPOSED TEMPORARY USE PERMIT
	POLE ANCHOR		SURVEY MONUMENTS (FOUND)
	TELEPHONE POLE		EXISTING RIGHT-OF-WAY MARKER
	TELEPHONE PEDESTAL		SIGN
	TELEPHONE WARNING SIGN		MAILBOX
	CABLE TELEVISION PEDESTAL		REINFORCED CONCRETE PIPE CULVERT
	FIRE HYDRANT		CORRUGATED METAL PIPE CULVERT
	WATER VALVE		TOP OF CASTING / TOP OF CURB
	WATER METER		INVERT
	WATER LINE		FLOWLINE
	GAS VALVE		EXISTING CONTOUR
	GAS LINE		PROPOSED CONTOUR
	FIBER OPTIC LINE		PROPOSED GRADE
	TREE/BRUSH LINE		TREE REMOVAL (INDIVIDUAL)
	FENCE LINE		TREE REMOVAL (AREA)
	PROPERTY LINE		
	EXISTING RIGHT-OF-WAY LINE		
	PROPOSED RIGHT-OF-WAY LINE		

NE 1/4 NW 1/4
SEC 1

- NOTES**
1. THE EXISTENCE, POSITION, SIZE AND TYPE OF ALL UNDERGROUND UTILITIES ARE APPROXIMATE AS SHOWN, BEING LOCATED BY ELECTRONIC DETECTION EQUIPMENT, BY VISUAL OBSERVATION, FROM UTILITY COMPANY MAPS AND BY VERBAL TESTIMONY OF EMPLOYEES FROM APPROPRIATE UTILITY COMPANY. VERIFICATION OF THE EXISTENCE, POSITION, SIZE AND TYPE SHOULD BE REQUESTED THROUGH "JULIE", 1-800-892-0126 PRIOR TO ANY CONSTRUCTION.
 2. ALL PHYSICAL FEATURES DEPICTED BY THIS SURVEY WERE CONDITIONS AS OF OCTOBER, 2006.

JACKSON COUNTY HIGHWAY DEPARTMENT
 JACKSON COUNTY, ILLINOIS
 BOSKYDELL ROAD
 GRADING, STORM SEWER AND TREE REMOVAL PLAN
 STA. 72+00 TO STA. 78+00