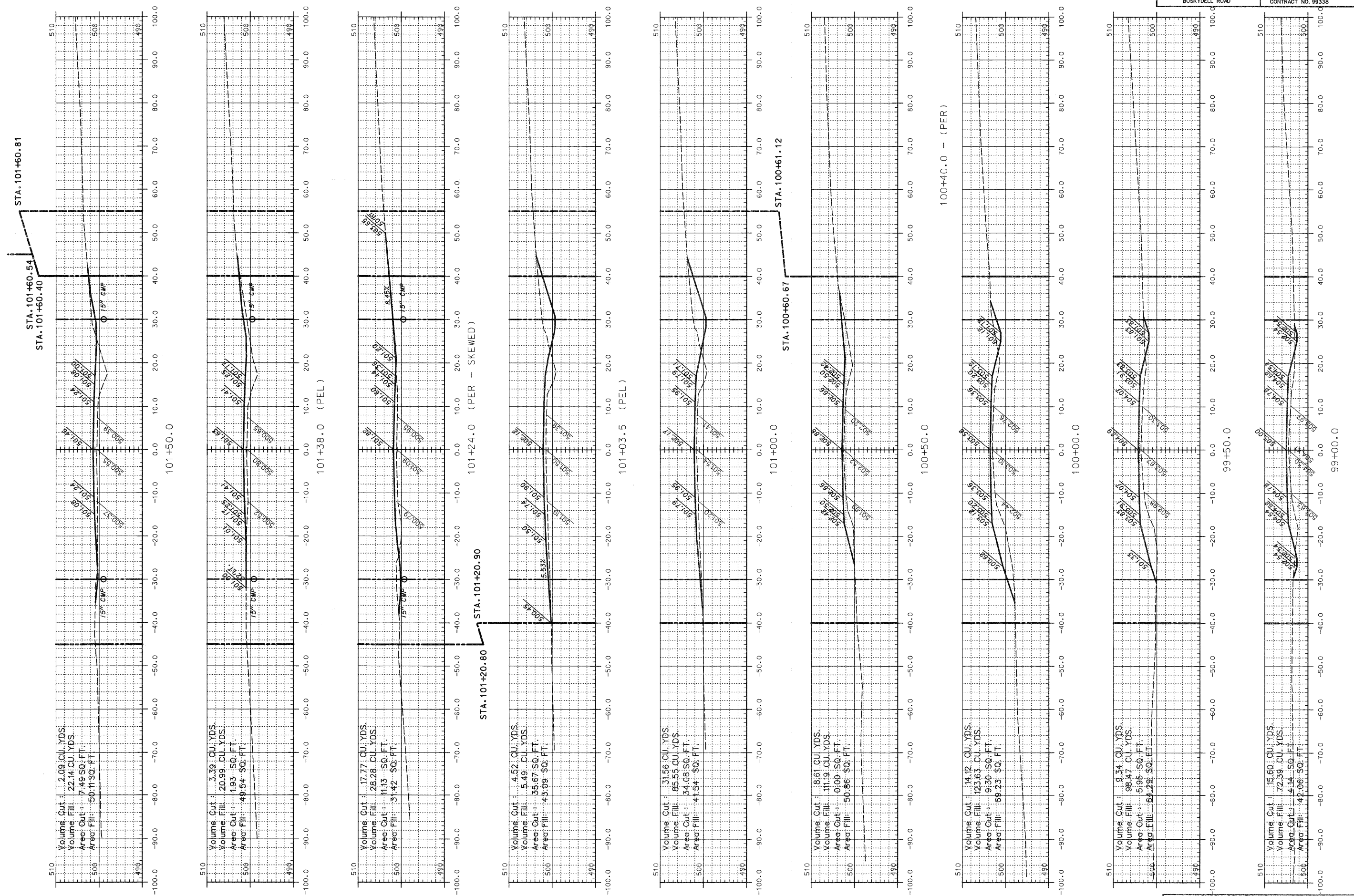


ROUTE	SECTION	COUNTY	TOWNSHIP	TOTAL SHEETS	SHEET NUMBER
FAS 1010	06-00144-00-WR	JACKSON	MAKANDA	91	78
JOB NO. C-99-579-06			PROJECT NO. SR-1919(106)		
BOSKYDELL ROAD			CONTRACT NO. 99338		



Volume Cut: 2.09 CU. YDS.
Volume Fill: 22.74 CU. YDS.
Area Cut: 7.49 SQ. FT.
Area Fill: 50.11 SQ. FT.

Volume Cut: 3.39 CU. YDS.
Volume Fill: 20.39 CU. YDS.
Area Cut: 1.93 SQ. FT.
Area Fill: 49.54 SQ. FT.

Volume Cut: 17.77 CU. YDS.
Volume Fill: 28.28 CU. YDS.
Area Cut: 11.93 SQ. FT.
Area Fill: 31.42 SQ. FT.

Volume Cut: 4.52 CU. YDS.
Volume Fill: 5.49 CU. YDS.
Area Cut: 35.67 SQ. FT.
Area Fill: 43.09 SQ. FT.

Volume Cut: 31.56 CU. YDS.
Volume Fill: 85.55 CU. YDS.
Area Cut: 34.08 SQ. FT.
Area Fill: 41.34 SQ. FT.

Volume Cut: 8.61 CU. YDS.
Volume Fill: 111.19 CU. YDS.
Area Cut: 0.00 SQ. FT.
Area Fill: 50.86 SQ. FT.

Volume Cut: 14.12 CU. YDS.
Volume Fill: 123.63 CU. YDS.
Area Cut: 9.30 SQ. FT.
Area Fill: 69.23 SQ. FT.

Volume Cut: 9.34 CU. YDS.
Volume Fill: 98.47 CU. YDS.
Area Cut: 5.95 SQ. FT.
Area Fill: 64.29 SQ. FT.

Volume Cut: 15.60 CU. YDS.
Volume Fill: 72.39 CU. YDS.
Area Cut: 4.14 SQ. FT.
Area Fill: 42.06 SQ. FT.

NOTE: QUANTITIES SHOWN ARE TO FINISH GRADE. THE ROADWAY MATERIAL IS INCLUDED IN THE QUANTITIES.

LEGEND
--- EXISTING RIGHT-OF-WAY
--- NEW RIGHT-OF-WAY
--- TEMPORARY USE PERMIT

JACKSON COUNTY HIGHWAY DEPARTMENT
JACKSON COUNTY, ILLINOIS
BOSKYDELL ROAD
CROSS SECTIONS - STA. 99+00 TO STA. 101+50