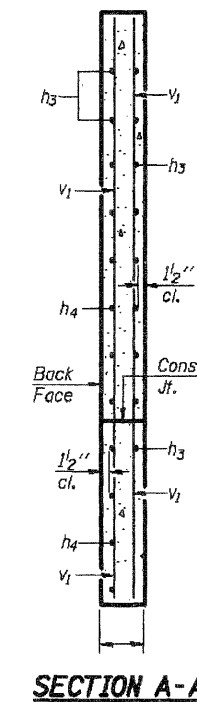
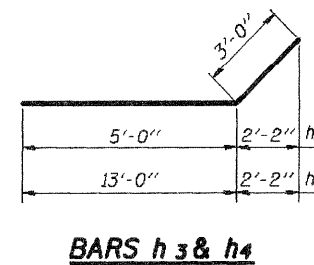
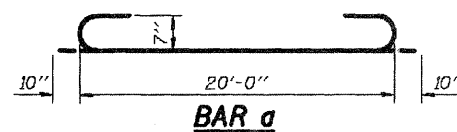
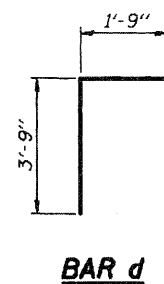
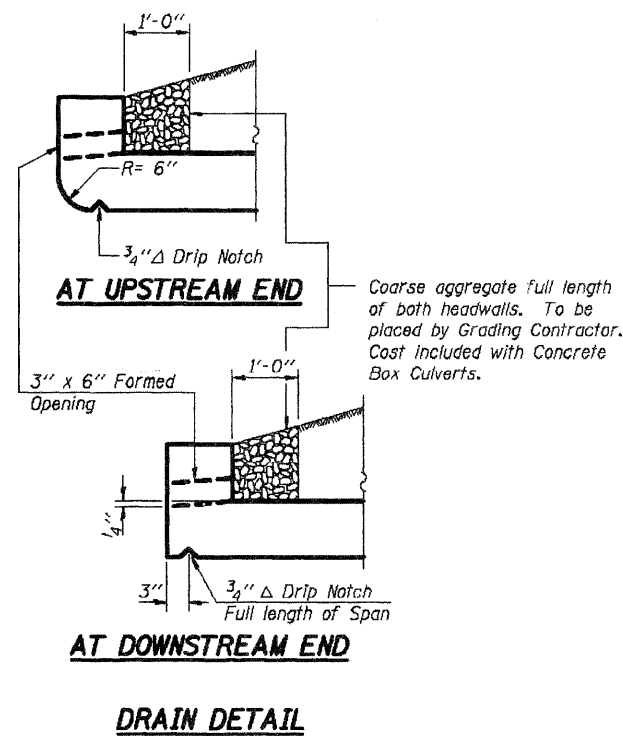


ROUTE	SECTION	COUNTY	TOWNSHIP	TOTAL SHEETS	SHEET NUMBER
FAS 1919	06-00144-00-WR	JACKSON	MAKANDA	91	85
JOB NO. C-99-579-06			PROJECT NO. SR-1919(06)		
BOSKYDELL ROAD			CONTRACT NO. 9933B		

STREAM  
 BUILT 2010 BY  
 JACKSON COUNTY  
 SEC. 06-00144-00-WR  
 FAS 1919  
 STRUCTURE NO.  
 LOADING HL-93

**NAME PLATE**  
 See Std. 515001



**BILL OF MATERIAL**

Bar	No.	Size	Length	Shape
a	68	#7	21'-8"	U
a1	58	#7	20'-0"	—
d	40	#4	5'-6"	L
h	108	#5	15'-3"	—
h1	108	#5	15'-0"	—
h2				—
h3	68	#6	8'-0"	—
h4	36	#6	16'-0"	—
h5	10	#6	20'-0"	—
s	20	#4	4'-9"	□
s1	20	#4	4'-11"	□
v	106	#4	9'-6"	—
v1	16	#4	13'-3"	—
Concrete Box Culverts		Cu. Yd.	89.3	
Reinforcement Bars		Pound	11860	
Concrete Removal		Cu. Yd.	10.3	
Porous Granular Embankment		Cu. Yd.	115	
Expansion Bolts, 3/4" x 12"		Each	82	

