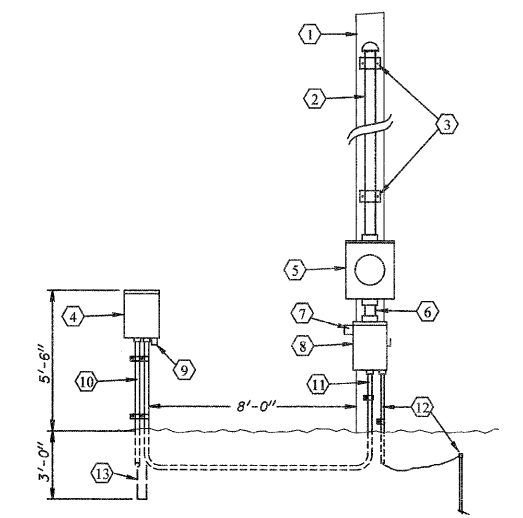


ROUTE	SECTION	COUNTY	TOWNSHIP	TOTAL SHEETS	SHEET NUMBER
FAS 1919	06-00144-00-WR	JACKSON	MAKANDA	91	86
JOB NO. C-99-579-06			PROJECT NO. SR-1019(106)		
BOSKYDELL ROAD			CONTRACT NO. 99338		

DETAIL NOTES

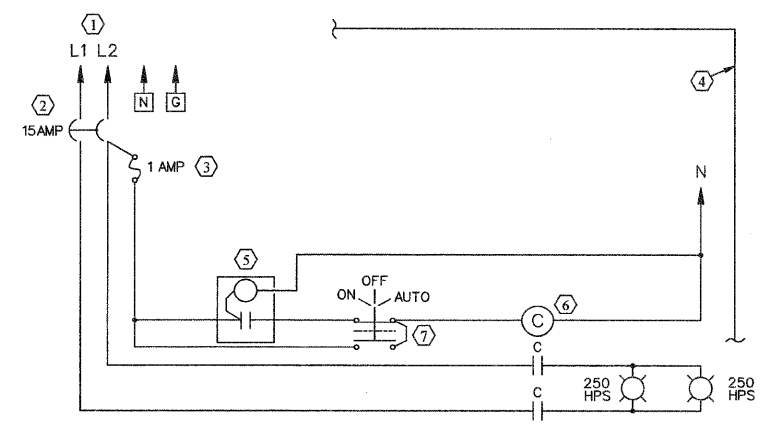
- General Note:** Contractor shall assemble and wire the meter loop, ready for utility company to install on pole. Contractor shall provide any alterations to service assembly as required by Egyptian Electric Co-op, as though shown or specified herein, with no additional compensation allowed.
- Existing Egyptian Electric Co-op utility pole shall be used to mount proposed meter loop.
 - 3-#3 in 1 1/4" RMC to height required by utility company. Leave tails sufficient length to reach transformer secondary terminals
 - Furnish 2-hole straps to utility company in quantity required.
 - Lighting controller. See typical schematic, this Sheet.
 - Utility company to furnish 100 amp, single phase meter base for Contractor assembly.
 - 3-#3 in 1 1/4" RMC. Provide grounding type insulating bushing on conduit entrance into bottom of meter base and bond to neutral bus.
 - Lightning arrester for single phase, 120/240 volt service - Square D #SDSA1175 or equal. Cut leads as short as possible to connect to line-side terminals.
 - 60 amp, 250 volt, 2-pole, 3-wire S/N, NEMA 3R fusible disconnect - Square D #D222NRB or equal. Provide 60/30 fuse reducers and fuse at 20 amps with Bussman #FRNR20, or equal.
 - Adjustable photocontrol - aim southwest.
 - 2-#10 and 1-#10 equipment ground in 3/4" PVC to roadway lighting assembly. See Site Plan for continuation.
 - 3-#10, and 1-#10 equipment ground in 3/4" PVC.
 - 1-#6 grounding electrode conductor in 1/2" PVC to a 5/8" x 8' copper clad ground rod driven 1' to the top below grade. Alter grounding as may be required by utility company.
 - 6"x6"x9' treated wood post; burial depth as shown.



METER LOOP & LIGHTING CONTROLLER DETAIL
NTS

SCHEMATIC NOTES

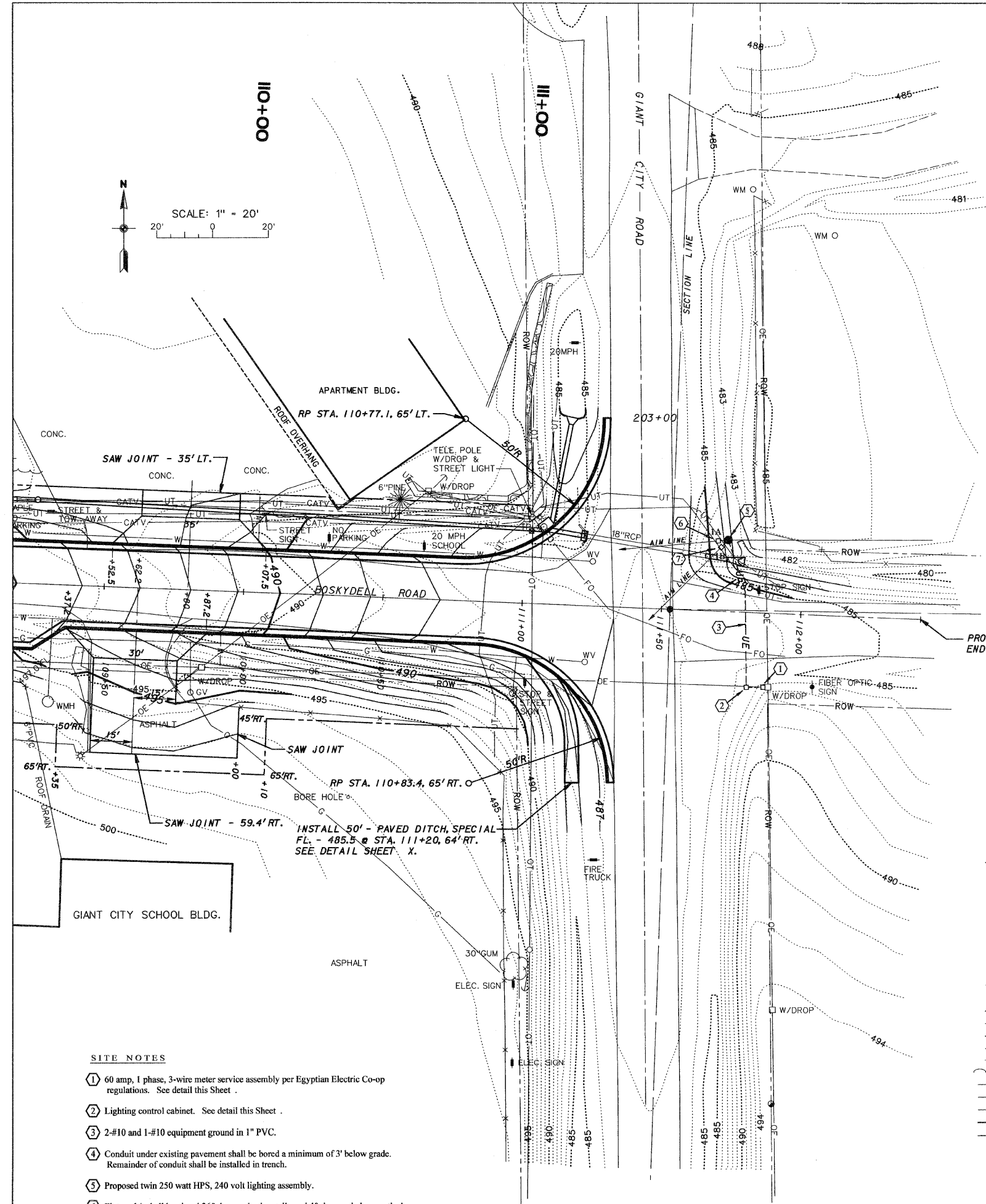
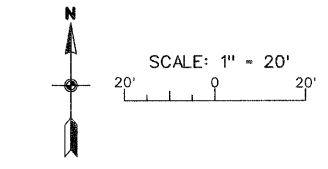
- General Note:** Cabinet and all components shall be assembled in accordance with UL508A by a UL approved vendor. All components shall be UL Listed.
- 240 volt, single phase, 3-wire, with ground feed from service disconnect.
 - 2-pole, line-lug type circuit breaker, rated for 10,000 AIC at 240 volts.
 - Modular type 1-pole fuse holder/disconnect with blown fuse indicator, suitable for DIN rail mounting - Gould USMII, or equal. Fuse at 1 amp, with Bussman #FRNR1, or equal.
 - Cabinet shall be painted steel, NEMA 4, hinged-door, and lockable, with a white, painted steel back panel for component mounting.
 - 1900 va rated, 120 volt, manually adjustable photocontrol, with conduit nipple and swivel mount - Paragon #CW201S-00, or equal. Mount through bottom of cabinet as shown in detail drawing, this Sheet.
 - 30 amp, 2-pole, open type lighting contactor with 120 volt coil - Square D, Class 8903, #LO20V02, or equal.
 - 3-position, maintained-contact selector switch with legend as shown, mounted inside the cabinet.



TYPICAL CONTROL SCHEMATIC

LEGEND

- — POWER POLE
- ⊙ — POLE ANCHOR
- ⊙ — TELEPHONE POLE
- TP ⊙ — TELEPHONE PEDESTAL
- ⊙ — TELEPHONE WARNING SIGN
- ⊙ — CABLE TELEVISION PEDESTAL
- FH ⊙ — FIRE HYDRANT
- WV ⊙ — WATER VALVE
- WM ⊙ — WATER METER
- W — WATER LINE
- GV ⊙ — GAS VALVE
- G — GAS LINE
- FO — FIBER OPTIC LINE
- UE — UNDERGROUND ELECTRIC
- OE — OVERHEAD ELECTRIC LINE
- OT — OVERHEAD TELEPHONE LINE
- X — TREE/BRUSH LINE
- X — FENCE LINE
- PL — PROPERTY LINE
- — — — — EXISTING RIGHT-OF-WAY LINE
- — — — — PROPOSED RIGHT-OF-WAY LINE
- — — — — PROPOSED TEMPORARY USE PERMIT
- — — — — SIGN
- MB ⊙ — MAILBOX
- RCP — REINFORCED CONCRETE PIPE CULVERT
- CMP — CORRUGATED METAL PIPE CULVERT
- TC — TOP OF CASTING / TOP OF CURB
- INV. — INVERT
- FL — FLOWLINE



SITE NOTES

- 60 amp, 1 phase, 3-wire meter service assembly per Egyptian Electric Co-op regulations. See detail this Sheet.
- Lighting control cabinet. See detail this Sheet.
- 2-#10 and 1-#10 equipment ground in 1" PVC.
- Conduit under existing pavement shall be bored a minimum of 3' below grade. Remainder of conduit shall be installed in trench.
- Proposed twin 250 watt HPS, 240 volt lighting assembly.
- Fixture 1A shall be aimed 265 degrees horizontally and 40 degrees below vertical.
- Fixture 1B shall be aimed 225 degrees horizontally and 30 degrees below vertical.