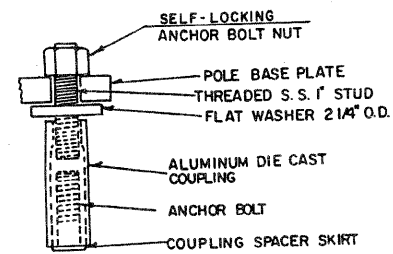


ROUTE	SECTION	COUNTY	TOWNSHIP	TOTAL SHEETS	SHEET NUMBER
FAS 1919	06-00144-00-WR	JACKSON	MAKANDA	91	87
JOB NO. C-99-579-06			PROJECT NO. SR-1919(106)		
BOSKYDELL ROAD			CONTRACT NO. 99338		

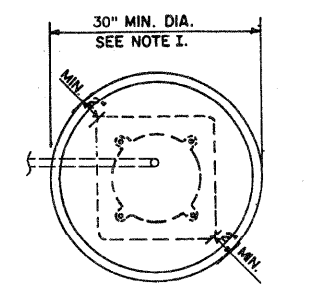
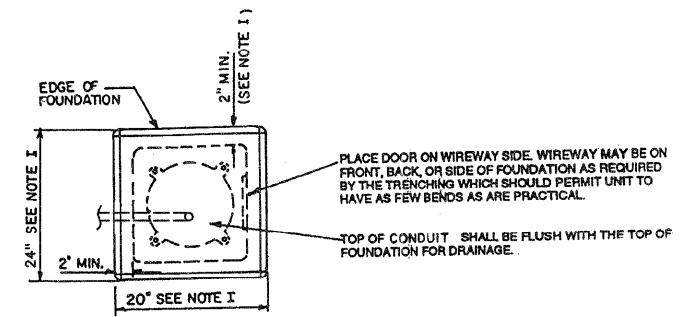


**TYP. COUPLING
(TRANPO SERIES 4100)**

**LOW MOUNT
DESIGN TABLE**

MOUNTING HEIGHT	FOUNDATION DEPTH	BOLT CIRCLE
30' OR LESS	5' - 0"	11 1/2"
31' - 35'	6' - 0"	11 1/2"
36' - 40'	7' - 0"	15"
41' - 50'	8' - 0"	15"

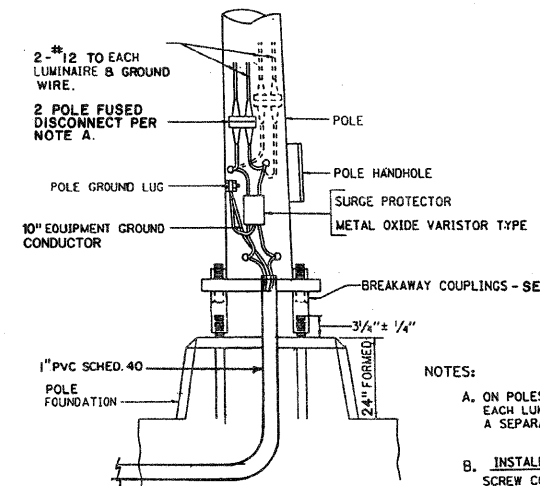
TABLE E



ALTERNATE FOUNDATION

SCHEDULE FOR STEEL LIGHT POLE

STATION	LIGHT NO.	ACTUAL POLE LENGTH	SETBACK FROM E.P.	VERTICAL AMING ANGLE BELOW VERTICAL
111+73	1A-1B	45'	20' G.C.RD. 18' B.RD.	1A - 40° 1B - 30°

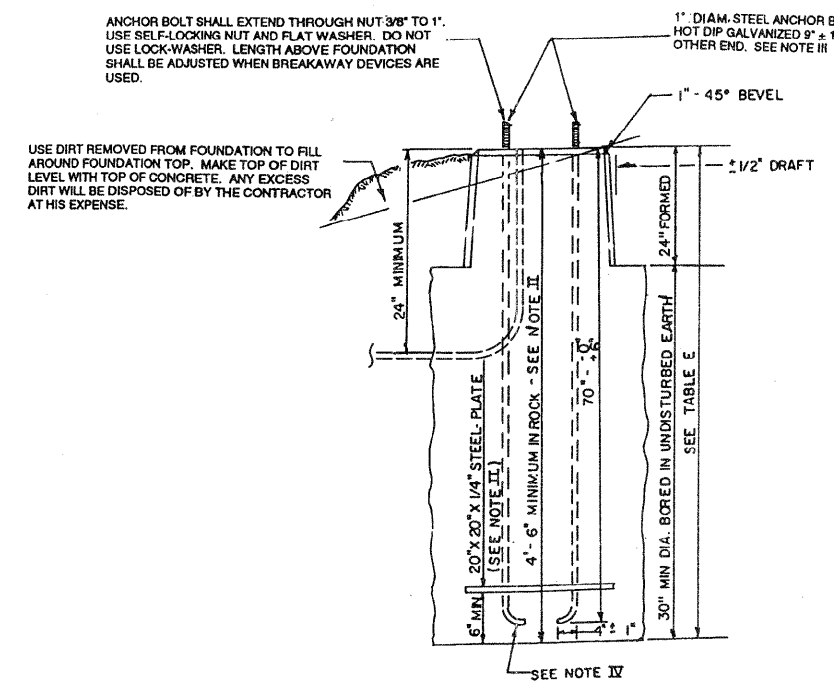


NOTES:

A. ON POLES WITH TWO LUMINAIRES, EACH LUMINAIRE SHALL HAVE A SEPARATE FUSED DISCONNECT

B. **INSTALLATION INSTRUCTIONS:**
SCREW COUPLINGS ON TO ANCHOR BOLTS TO END OF THREADS, LEVEL COUPLINGS, VERY IMPORTANT, AS COUPLINGS WILL BECOME OVERSTRESSED AND EITHER CRACK OR STRIP THREADS INSIDE COUPLING.

**POLE BASE WIRING & LUMINAIRE MOUNTING
NOT TO SCALE**



NOTE: AFTER POURING CONCRETE, THE FORM SHALL REMAIN UNDISTURBED OVERNIGHT.

NOTE I: THE TOP 18\"/>

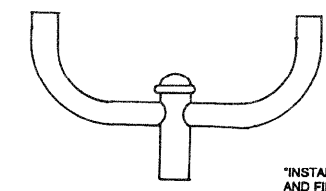
NOTE II: MINIMUM CLEARANCE FROM THE OUTSIDE EDGE OF FOUNDATION TO ANY PART OF THE POLE BASEPLATE SHALL BE 2\"/>

NOTE III: THE DEPTH OF THE FOUNDATION MAY BE REDUCED 6\"/>

NOTE IV: ON PARAPET WALLS USE 1 1/4\"/>

NOTE V: BEND RADIUS SHALL BE FOUR TIMES BOLT DIAMETER.

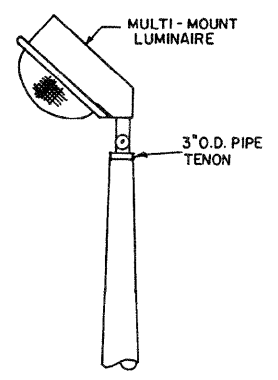
NOTE VI: CONNECT GROUND WIRES TO POLE BASE GROUND LUG NOT ANCHOR BOLTS OF TRANSFORMER BASE.



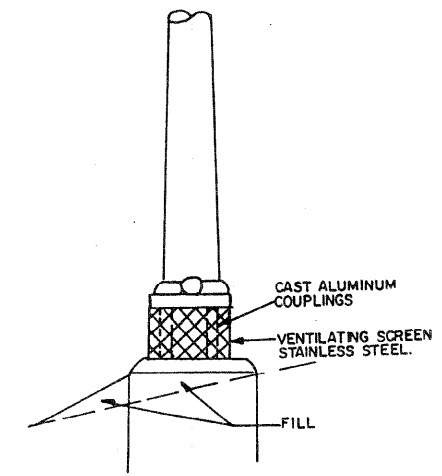
"INSTALL AND ORIENT ARM BRACKET OVER POLE TENON AND FIRMLY HAND TIGHTEN THE TWO SET SCREWS. USE THIRD HOLE IN ARM BRACKET AS A GUIDE TO DRILL A 21/64\"/>

POLE SHALL MEET AASHTO STANDARD SPECIFICATIONS FOR 80 M.P.H. WIND LOADING & 90 LB 4.0 SO. FT. E.P.A. LUMINAIRE.

**TWIN TENON
NO SCALE**



**TENON
NO SCALE**



**FRANGIBLE METAL
BREAKAWAY COUPLING
NO SCALE**