

GENERAL NOTES:

THIS SECTION SHALL BE CONSTRUCTED IN ACCORDANCE WITH THE PLANS, SPECIAL PROVISIONS AND "STANDARD SPECIFICATIONS FOR ROAD AND BRIDGE CONSTRUCTION", ADOPTED JANUARY 1, 2012.

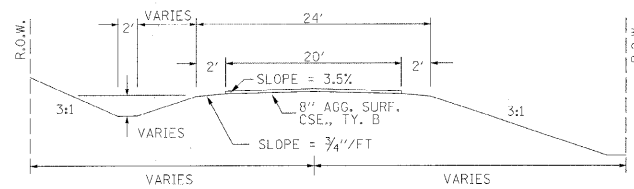
THE WORK INVOLVED ON THIS SECTION CONSISTS OF THE REMOVAL OF THE EXISTING STRUCTURE, THE CONSTRUCTION OF A 70 FOOT LONG SINGLE SPAN PRECAST, PRESTRESSED CONCRETE DECK BEAM BRIDGE, EARTH APPROACHES, AGGREGATE SURFACE COURSE AND OTHER MISCELLANEOUS ITEMS NECESSARY TO COMPLETE THIS SECTION.

ALL ELEVATIONS ARE BASED ON U.S.G.S. MEAN SEA LEVEL DATUM.

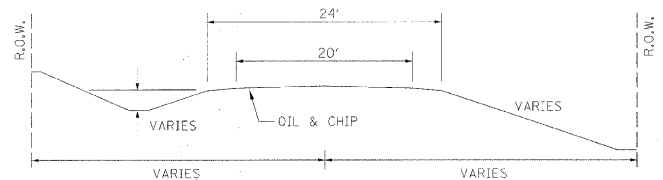
IT SHALL BE THE CONTRACTOR'S RESPONSIBILITY TO CONTACT ALL THE UTILITIES, AFFECTING THE PROJECT, PRIOR TO CONSTRUCTION.

THE EXISTING BEAMS AND GUARD RAIL SHALL BE SALVAGED AND PLACED ALONG THE RIGHT-OF-WAY AS DIRECTED BY THE ENGINEER. ALSO THE CONCRETE SLOPE WALL SHALL BE REMOVED. THIS WORK SHALL BE CONSIDERED AS REMOVAL OF EXISTING STRUCTURES.

TYPICAL CROSS SECTION PROPOSED



TYPICAL CROSS SECTION EXISTING



NOTE: CONSTRUCT SPECIAL DITCH

STA 1+75 TO STA 3+00 RT

NOTE: SEEDING (SPECIAL)

STA. 3+15 TO STA. 3+65 12' RT TO TOE RT
34 SQ YD OF SEEDING SPECIAL

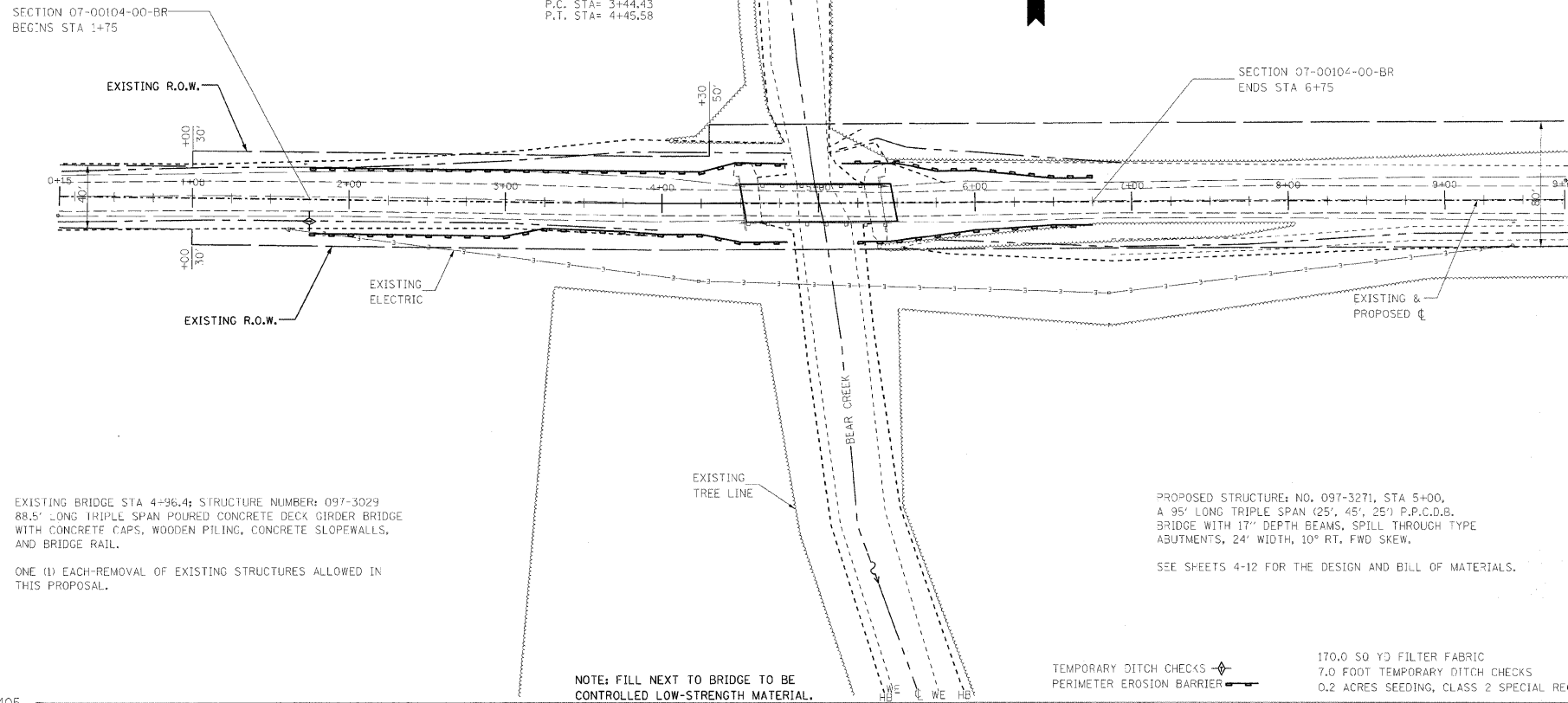
UTILITIES:
J.U.L.I.E. 1-800-892-0123
WAYNE-WHITE ELECTRIC CO-OP
1-618-842-2196

SCHEDULE OF PERIMETER EROSION BARRIER

STATION	TO	STATION	LENGTH - FOOT
1+75	22' RT.	3+00	22' RT.
3+00	22' RT.	3+25	16.8' RT.
3+25	16.8' RT.	3+75	18.1' RT.
3+75	18.1' RT.	4+00	20' RT.
4+00	20' RT.	4+25	20' RT.
4+25	20' RT.	4+50	25' RT.
4+50	25' RT.	4+79	25' RT.
1+75	20' LT.	4+25	20' LT.
4+25	20' LT.	4+47	25.8' LT.
4+47	25.8' LT.	4+80	25' LT.
5+25	25' RT.	5+45	25' RT.
5+45	25' RT.	6+00	18' RT.
6+00	18' RT.	6+50	15' RT.
6+50	15' RT.	6+75	15' RT.
5+15	25' LT.	5+50	25' LT.
5+50	25' LT.	5+75	20' LT.
5+75	20' LT.	6+00	20' LT.
6+00	20' LT.	6+50	15' LT.
6+50	15' LT.	6+75	15' LT.
TOTAL			920

NOTE: CONSTRUCTION TRANSITION
STA. 1+75 TO STA 2+25
STA 6+25 TO STA 6+75
ALL QUANTITIES ARE INCLUDED IN THE PROPOSAL

CURVE #1
P.I. STA= 3+95
Δ= L.T. 1702'06"
D= 1701'23"
R= 5600'
T= 50.58'
L= 101.15'
E= 0.23'
e= NONE
T.R.= NONE
S.E. RUN= NONE
P.C. STA= 3+44.43
P.T. STA= 4+45.58



EXISTING BRIDGE STA 4+96.4; STRUCTURE NUMBER: 097-3029
88.5' LONG TRIPLE SPAN POURED CONCRETE DECK GIRDER BRIDGE
WITH CONCRETE CAPS, WOODEN PILING, CONCRETE SLOPEWALLS,
AND BRIDGE RAIL.

ONE (1) EACH-REMOVAL OF EXISTING STRUCTURES ALLOWED IN
THIS PROPOSAL.

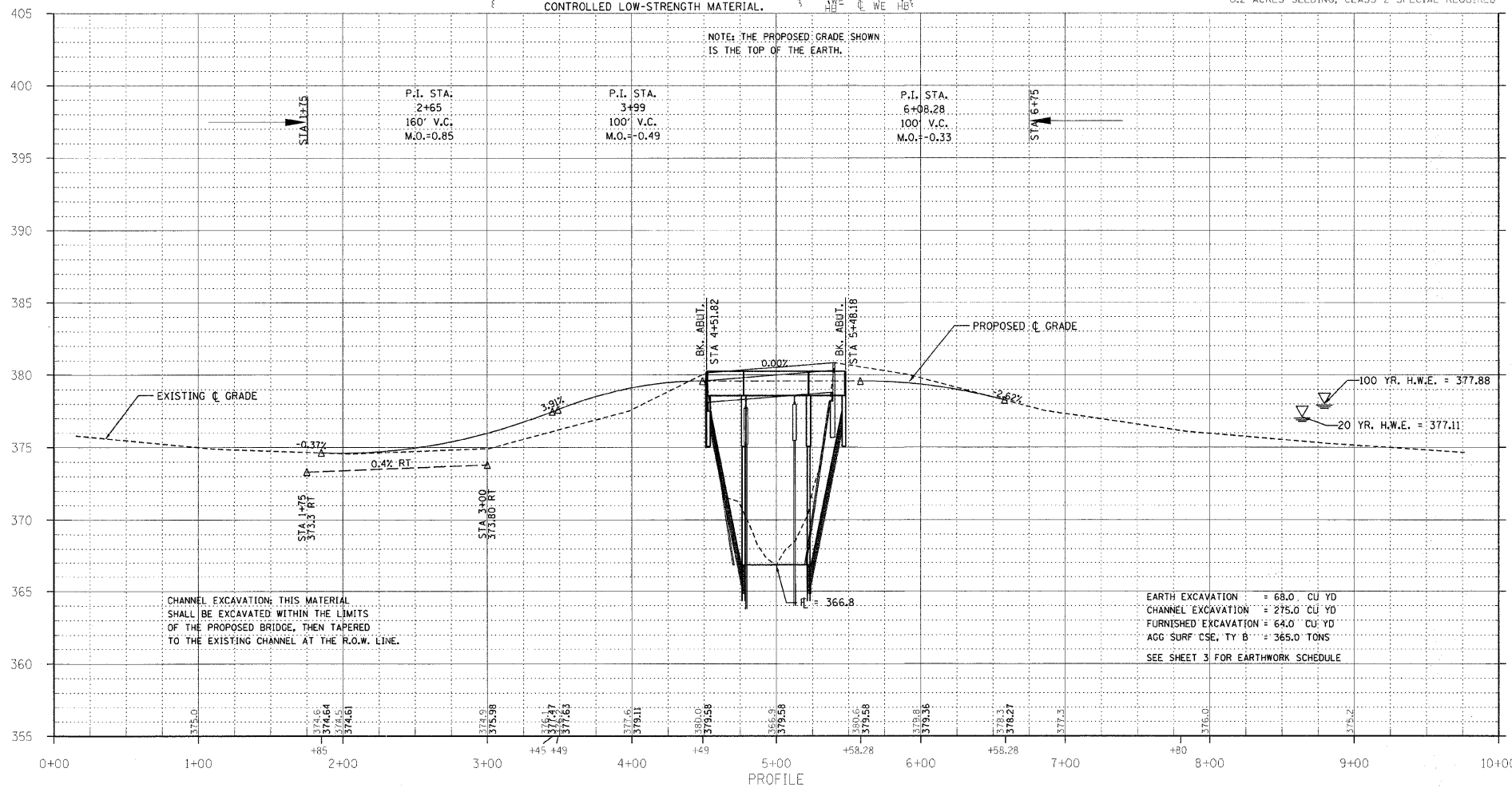
PROPOSED STRUCTURE: NO. 097-3271, STA 5+00,
A 95' LONG TRIPLE SPAN (25', 45', 25') P.P.C.D.B.
BRIDGE WITH 17" DEPTH BEAMS, SPILL THROUGH TYPE
ABUTMENTS, 24' WIDTH, 10° RT. FWD SKEW.

SEE SHEETS 4-12 FOR THE DESIGN AND BILL OF MATERIALS.

NOTE: FILL NEXT TO BRIDGE TO BE
CONTROLLED LOW-STRENGTH MATERIAL.

TEMPORARY DITCH CHECKS
PERIMETER EROSION BARRIER

170.0 SQ YD FILTER FABRIC
7.0 FOOT TEMPORARY DITCH CHECKS
0.2 ACRES SEEDING, CLASS 2 SPECIAL REQUIRED



CHANNEL EXCAVATION: THIS MATERIAL
SHALL BE EXCAVATED WITHIN THE LIMITS
OF THE PROPOSED BRIDGE, THEN TAPERED
TO THE EXISTING CHANNEL AT THE R.O.W. LINE.

EARTH EXCAVATION = 68.0 CU YD
CHANNEL EXCAVATION = 275.0 CU YD
FURNISHED EXCAVATION = 64.0 CU YD
ACC SURF CSE, TY B = 365.0 TONS
SEE SHEET 3 FOR EARTHWORK SCHEDULE

FAS	SECTION	COUNTY	TOTAL SHEETS	SHEET NO.
881	07-00104-00-BR	WHITE	16	2
FED. ROAD DIST. NO. 9 ILLINOIS		BEAR CREEK		
PROJECT # BRS-881(117)		CONTRACT # 99451		
LEC JOB # H091005MH				

323 W. 3RD ST.
P.O. BOX 160
MT. CARMEL, IL
62863
PHONE:
(618)-262-8651
FAX:
(618)-263-3327

405 W. STATE ST
SUITE 1
PRINCETON, IN
47670
PHONE:
(812)-386-7611
FAX:
(812)-385-2812

LANAC
ENGINEERING CO.

PROFESSIONAL DESIGN FIRM
LAND SURVEY & PROFESSIONAL ENGINEERING CORPORATION
184-000887
(62-032435)(35-002769)

AARON M. MEFFORD
REGISTERED PROFESSIONAL ENGINEER
ILLINOIS
56284

AARON M. MEFFORD
NAME
SIGNATURE
DATE
10-15-11
11-30-13
EXPIRES

F.A.S. 881
OVER BEAR CREEK
WHITE COUNTY, ILLINOIS

SHEET TITLE:
PLAN & PROFILE

SCALE: VARIES
BY: AMM
DATE: 10/2/10
REV:

2 OF 16
SHEETS

SHEET NO.
2