

SEE SHEET 2 FOR
INDEX OF SHEETS AND
LIST OF ILLINOIS DOT HIGHWAY STANDARDS

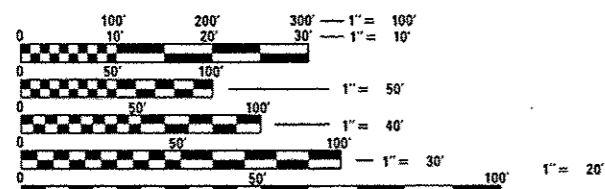
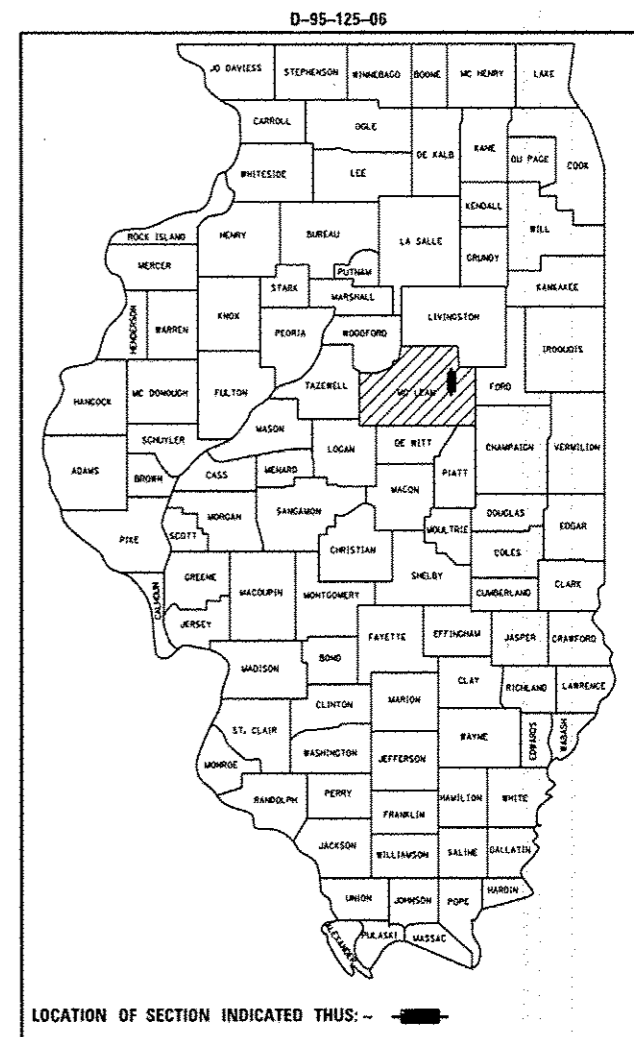
STATE OF ILLINOIS
DEPARTMENT OF TRANSPORTATION

**PLANS FOR PROPOSED
HIGHWAY PLANS**

FAS ROUTE 493 (CH 5)
SECTION 25-B-NRS-BR-1
PROJECT ACRS-0493(104)
MCLEAN COUNTY

**SUPERSTRUCTURE REPLACEMENT
SANGAMON CREEK 1.4 MILES SOUTH OF IL 9
C-95-125-06**

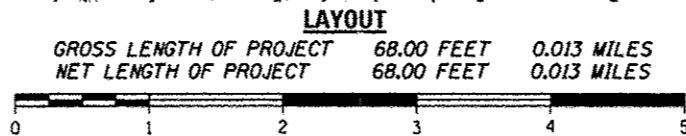
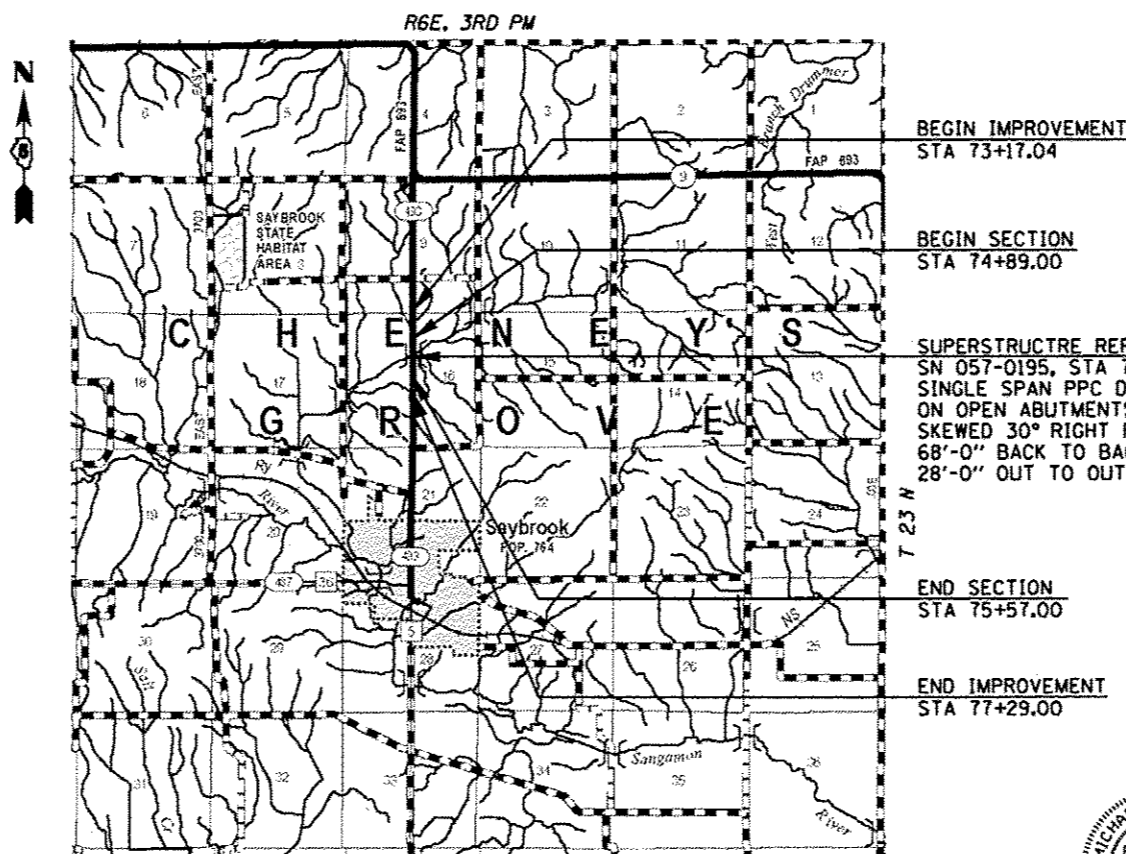
F.A.S. RATE	SECTION	COUNTY	TOTAL SHEETS	SHEET NO.
493	25-B-NRS-BR-1	MCLEAN	23	1
FEDERAL AID PROJECT		ILLINOIS	CONTRACT NO. 70611	



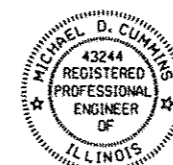
FULL SIZE PLANS HAVE BEEN PREPARED USING STANDARD ENGINEERING SCALES. REDUCED SIZED PLANS WILL NOT CONFORM TO STANDARD SCALES. IN MAKING MEASUREMENTS ON REDUCED PLANS, THE ABOVE SCALES MAY BE USED.

J.U.L.I.E.
JOINT UTILITY LOCATION INFORMATION FOR EXCAVATION
1-800-892-0123
OR 811 CHENEY'S GROVE TWP

PROJECT ENGINEER: JASON STULTS
CONSULTANT LIAISON: RUSTIN KEYS
DISTRICT 5 No.: (217) 465-4181
CONTRACT NO. 70611



FUNCTIONAL CLASSIFICATION: MAJOR COLLECTOR
DESIGN SPEED 55 MPH
CURRENT ADT= 900 (2015)



Michael D. Cummins
ILLINOIS PROFESSIONAL NO. 43244
(Expires 11/30/17)

STATE OF ILLINOIS
DEPARTMENT OF TRANSPORTATION

SUBMITTED 10/20 20 16

Jason Stults
REGIONAL ENGINEER

Dec 9 2016
Maureen M. Addis, P.E.
ENGINEER OF DESIGN AND ENVIRONMENT

Dec 9 2016
James G. Kelly
DIRECTOR OF PROGRAM DEVELOPMENT

**PRINTED BY THE AUTHORITY
OF THE STATE OF ILLINOIS**

INDEX OF SHEETS

SHEET NO.	TITLE
1	COVER SHEET
2	INDEX OF SHEETS, HIGHWAY STANDARDS & GENERAL NOTES
3-5	SUMMARY OF QUANTITIES
6	EXISTING TYPICAL SECTIONS
7	PROPOSED TYPICAL SECTIONS
8	SCHEDULE OF QUANTITIES
9	ALIGNMENT, BENCHMARKS AND CROSS TIES
10	PLAN AND PROFILE
11	GUARDRAIL AND SHOULDER WIDENING DETAILS
12	BUTT JOINT DETAILS
13	ROAD CLOSURE DETAILS
14	TRAFFIC CONTROL & PROTECTION DEVICES (ROAD & SIDEROAD/STREET CLOSURES)
15	PAVEMENT MARKING DETAILS
16-21	PROPOSED SN 057-0195 PLANS
22-23	CROSS SECTIONS

LIST OF ILLINOIS DOT HIGHWAY STANDARDS

000001-06	STANDARD SYMBOLS ABBREVIATIONS AND PATTERNS
001001-02	AREAS OF REINFORCEMENT BARS
001006	DECIMAL OF AN INCH AND OF A FOOT
280001-07	TEMPORARY EROSION CONTROL SYSTEMS
515001-03	NAME PLATE FOR BRIDGE
630001-11	STEEL PLATE BEAM GUARDRAIL
630301-07	SHOULDER WIDENING FOR TYPE 1 (SPECIAL) GUARDRAIL TERMINALS
631032-09	TRAFFIC BARRIER TERMINAL, TYPE 6A
667101-02	PERMANENT SURVEY MARKERS
701006-05	OFF-ROAD OPERATIONS, 2L, 2W, 15' TO 24" FROM PAVEMENT EDGE
701311-03	LANE CLOSURE, 2L, 2W, MOVING OPERATIONS-DAY ONLY
701901-06	TRAFFIC CONTROL DEVICES
725001-01	OBJECT AND TERMINAL MARKERS
780001-05	TYPICAL PAVEMENT MARKINGS
782006	GUARDRAIL AND BARRIER WALL REFLECTOR MOUNTING DETAILS

GENERAL NOTES

G.N.-100
ENGLISH UNITS OF MEASUREMENT SHALL GOVERN OVER AND SUPERSEDE ANY METRIC UNITS SHOWN IN THIS CONTRACT, WHERE INCLUDED, METRIC UNITS ARE FOR INFORMATION ONLY.

G.N.-100A
ELECTRONIC FILES AND/OR ELECTRONIC SURVEY INFORMATION INCLUDING CADD FILES WILL NOT BE AVAILABLE TO THE CONTRACTOR.

G.N.-105.09A
ALL ELEVATIONS SHOWN IN THE PLANS ARE BASED ON NORTH AMERICAN VERTICAL DATUM OF 1988. (NAVD 88)

G.N.-107.37
UTILITY LINES WERE PLOTTED FROM INFORMATION FURNISHED BY THE VARIOUS UTILITY COMPANIES INVOLVED (QUALITY LEVEL C &/OR QUALITY LEVEL D) AND THE ACCURACY SHOULD BE CONSIDERED APPROXIMATE ONLY.

UTILITY COMPANIES MAY BE ADJUSTING THEIR FACILITIES DURING CONSTRUCTION. THE CONTRACTOR SHALL COOPERATE WITH THESE ORGANIZATIONS WHILE THESE ADJUSTMENTS ARE BEING PERFORMED. J.U.L.L.E. - JOINT UTILITY LOCATION INFORMATION FOR EXCAVATORS SYSTEM (800) 892-0123 OR 811.

G.N.-280
TEMPORARY EROSION CONTROL SEEDING IS INCLUDED IN THIS CONTRACT TO SEED DISTURBED EARTH DURING TIME PERIODS WHEN PERMANENT SEEDING IS NOT ALLOWED. SOME OR ALL OF THE TEMPORARY EROSION CONTROL SEEDING WILL BE DELETED IF IT IS POSSIBLE TO PLACE PERMANENT SEEDING ON EARTH AT THE TIME OF THEIR COMPLETION.

G.N.-406
THE QUANTITIES INCLUDED IN THE PLANS FOR HOT-MIX ASPHALT RESURFACING ARE INTENDED TO GIVE THE COVERAGE SHOWN ON THE TYPICAL CROSS SECTIONS. IT IS NOT INTENDED TO INCREASE THE THICKNESS OF THE HOT-MIX ASPHALT MIXTURE IN ORDER TO USE ALL OF THE QUANTITIES INCLUDED IN THE CONTRACT.

G.N.-703A
SHORT TERM PAVEMENT MARKING SHALL BE APPLIED TO THE PAVEMENT IF THE ROAD IS OPENED TO TRAFFIC PRIOR TO PLACING THE PERMANENT PAVEMENT MARKINGS. SHORT TERM PAVEMENT MARKING PLACED ON THE SURFACE, SHALL COINCIDE WITH THE FINAL PAVEMENT STRIPING. USE 4 FEET PER 40 FEET (OR 10% PER STATION).

G.N.-Z0038
AN ALUMINUM TABLET OF THE TYPE SHOWN ON STANDARD 667101 SHALL BE PLACED ON THE PROPOSED STRUCTURE AS DIRECTED BY THE ENGINEER. THE BENCH MARK ELEVATION WILL BE ESTABLISHED AND MARKED BY THE DEPARTMENT. THIS WORK WILL BE PAID FOR AT THE CONTRACT UNIT PRICE EACH FOR PERMANENT BENCH MARKS.

APPLICATION RATES USED IN QUANTITY CALCULATIONS

HOT-MIX ASPHALT	112 LBS/SQ YD/INCH
BITUMINOUS MATERIALS (TACK COAT)	0.05 LBS/SQ FT
AGGREGATE	2.05 TON/CU YD
TEMPORARY EROSION CONTROL SEEDING	100 LBS/ACRE

G.N. -406H
MIXTURE REQUIREMENTS
THE FOLLOWING MIXTURE REQUIREMENTS ARE APPLICABLE FOR THIS PROJECT:

LOCATION(S):	CH 5
MIXTURE USE(S):	SURFACE
AC/PG:	PG 64-22
DESIGN AIR VOIDS:	4.0 @ NDESIGN = 50
MIXTURE COMP (GRADATION)	IL 9.5
FRICTION AGGREGATE:	MIX "C"
MIXTURE WEIGHT	112
QUALITY MANAGEMENT PROGRAM	QC/OA
SUBLOT SIZE	N.A.

THERE ARE NO COMMITMENTS ASSOCIATED WITH THIS PROJECT

CODE NO.	ITEM	UNIT	TOTAL QUANTITY	CONSTRUCTION CODE				
				RURAL 2 LANE 80% FEDERAL 20% STATE				
				FAS 493 (CH 5)				
				MCLEAN COUNTY				
				STA 74+00 TO				
				STA 76+46				
				SN 057-0195				
				0014				
20200100	EARTH EXCAVATION	CU YD	10	10				
20300100	CHANNEL EXCAVATION	CU YD	75	75				
20400800	FURNISHED EXCAVATION	CU YD	155	155				
25000210	SEEDING, CLASS 2A	ACRE	0.5	0.5				
25000400	NITROGEN FERTILIZER NUTRIENT	POUND	45	45				
25000500	PHOSPHORUS FERTILIZER NUTRIENT	POUND	45	45				
25000600	POTASSIUM FERTILIZER NUTRIENT	POUND	45	45				
25100630	EROSION CONTROL BLANKET	SQ YD	1,281	1,281				
28000250	TEMPORARY EROSION CONTROL SEEDING	POUND	100	100				
28000305	TEMPORARY DITCH CHECKS	FOOT	32	32				
40600290	BITUMINOUS MATERIALS (TACK COAT)	POUND	294	294				
40600982	HOT-MIX ASPHALT SURFACE REMOVAL - BUTT JOINT	SQ YD	443	443				
40603310	HOT-MIX ASPHALT SURFACE COURSE, MIX "C", N50	TON	92	92				
48101200	AGGREGATE SHOULDERS, TYPE B	TON	38	38				

19 * SPECIALTY ITEMS

CODE NO.	ITEM	UNIT	TOTAL QUANTITY	CONSTRUCTION CODE				
				RURAL 2 LANE 80% FEDERAL 20% STATE				
				FAS 493 (CH 5)				
				MCLEAN COUNTY				
				STA 74+00 TO				
				STA 76+46				
				SN 057-0195				
				0014				
50101500	REMOVAL OF EXISTING SUPERSTRUCTURES	EACH	1	1				
50102400	CONCRETE REMOVAL	CU YD	0.6	0.6				
50300225	CONCRETE STRUCTURES	CU YD	0.6	0.6				
50400505	PRECAST PRESTRESSED CONCRETE DECK BEAMS (27" DEPTH)	SQ FT	1,808	1,808				
50901050	STEEL RAILING, TYPE SM	FOOT	130	130				
51500100	NAME PLATES	EACH	1	1				
58100200	WATERPROOFING MEMBRANE SYSTEM	SQ YD	201	201				
58300100	PORTLAND CEMENT MORTAR FAIRING COURSE	FOOT	388	388				
* 63000001	STEEL PLATE BEAM GUARD RAIL, TYPE A, 6 FOOT POSTS	FOOT	150	150				
* 63100087	TRAFFIC BARRIER TERMINAL, TYPE 6A	EACH	4	4				
* 63100167	TRAFFIC BARRIER TERMINAL, TYPE 1 (SPECIAL) TANGENT	EACH	4	4				
63200310	GUARDRAIL REMOVAL	FOOT	408	408				
67000500	ENGINEER'S FIELD OFFICE, TYPE B	CAL MO	4	4				
67100100	MOBILIZATION	L SUM	1	1				

* SPECIALTY ITEMS



JOB # 2399.1
 FILE NAME # 05/26/11/rant-500.dgn
 PLOT SCALE # 20.0000' / 1" in.
 PLOT DATE # 10/17/2016

DESIGNED - NAK
 DRAWN - SJS
 CHECKED - NAK
 DATE - 10/9/2015

REVISED -
 REVISED -
 REVISED -
 REVISED -

STATE OF ILLINOIS
 DEPARTMENT OF TRANSPORTATION

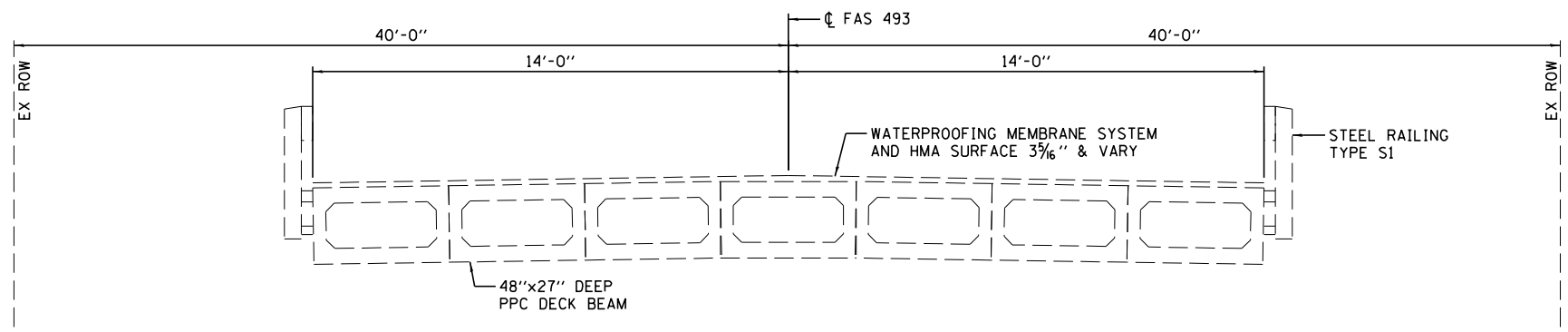
SUMMARY OF QUANTITIES

SCALE: SHEET NO. 2 OF 3 SHEETS STA. TO STA.

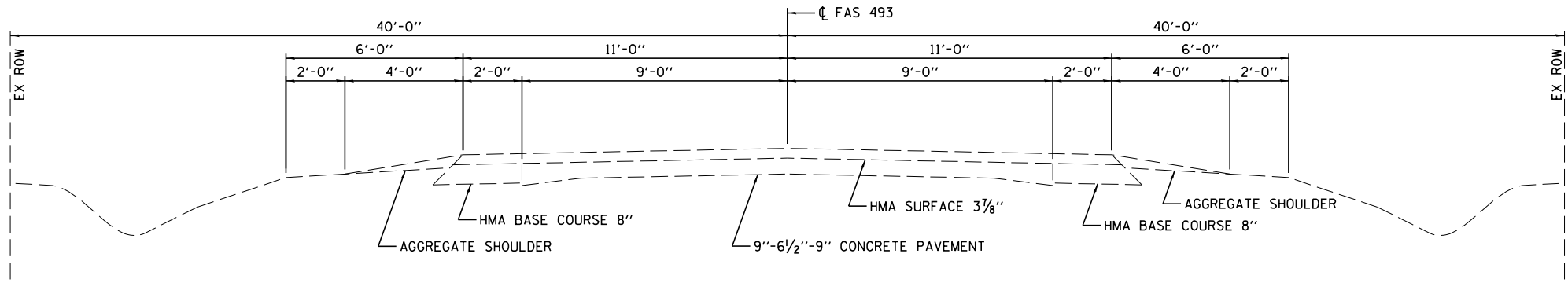
F.A.S. RTE. 493	SECTION 25-B-NRS-BR-1	COUNTY MCLEAN	TOTAL SHEETS 23	SHEET NO. 4
CONTRACT NO. 70611				
FED. ROAD DIST. NO. [ILLINOIS] FED. AID PROJECT				

CODE NO.	ITEM	UNIT	TOTAL QUANTITY	CONSTRUCTION CODE				
				RURAL 2 LANE 80% FEDERAL 20% STATE				
				FAS 493 (CH 5)				
				MCLEAN COUNTY				
				STA 74+00 TO				
				STA 76+46				
				SN 057-0195				
				0014				
70300100	SHORT TERM PAVEMENT MARKING	FOOT	28	28				
70300150	SHORT TERM PAVEMENT MARKING REMOVAL	SQ FT	9	9				
* 72501000	TERMINAL MARKER - DIRECT APPLIED	EACH	4	4				
* 78001110	PAINT PAVEMENT MARKING - LINE 4"	FOOT	492	492				
* 78001130	PAINT PAVEMENT MARKING - LINE 6"	FOOT	70	70				
* 78200005	GUARDRAIL REFLECTORS, TYPE A	EACH	8	8				
X7010216	TRAFFIC CONTROL AND PROTECTION, (SPECIAL)	L SUM	1	1				
Z0001800	APPROACH SLAB REPAIR (PARTIAL DEPTH)	SQ YD	15	15				
Z0012754	STRUCTURAL REPAIR OF CONCRETE (DEPTH EQUAL TO OR LESS THAN 5 INCHES)	SQ FT	206	206				
Z0038700	PERMANENT BENCH MARKS	EACH	1	1				

to * SPECIALTY ITEMS

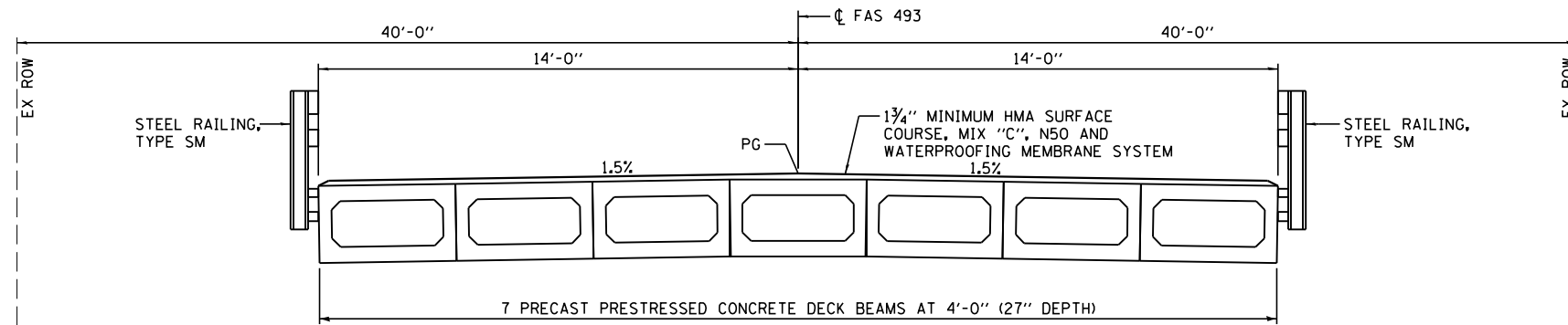


EXISTING TYPICAL SECTION
STA 74+89.58 TO STA 75+56.42

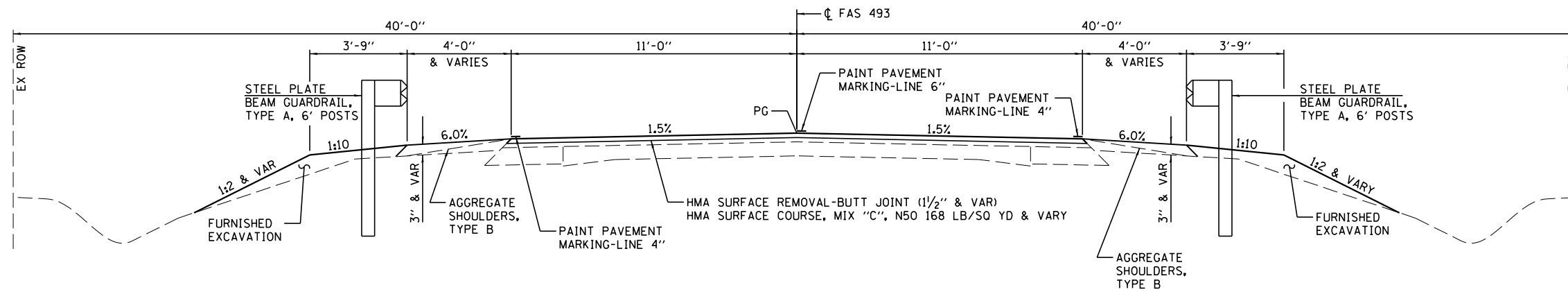


EX BRIDGE APPROACH PAVEMENT
STA 74+63.23 TO STA 74+89.58
STA 75+56.42 TO STA 75+82.77

EXISTING TYPICAL SECTION
STA 74+00 TO STA 74+89.58
STA 75+56.42 TO STA 76+46



② PROPOSED TYPICAL SECTION
① STA 74+89.58 TO STA 75+56.42 ①



① PROPOSED TYPICAL SECTION
① STA 74+00 TO STA 74+89.58 ②
② STA 75+56.42 TO STA 76+46

EARTHWORK

LOCATION	20200100 EARTH EXCAVATION	EXCAVATION ADJUSTED FOR SHRINKAGE	EMBANKMENT	EARTHWORK BALANCE WASTE (+) OR SHORTAGE (-)	20400800 FURNISHED EXCAVATION
	CU YD	CU YD	CU YD	CU YD	CU YD
EARTH EXCAVATION					
RT STA 73+11.50 TO STA 74+89.00	5	5	85	-80	80
RT STA 75+56.00 TO STA 77+37.16	5	5	80	-75	75
TOTAL	10	10	165	-155	155

SHRINKAGE = 25%

SEEDING

LOCATION	25000210	25000400	25000500	25000600	25100630	28000250
	SEEDING, CLASS 2A	NITROGEN FERTILIZER NUTRIENT	PHOSPHORUS FERTILIZER NUTRIENT	POTASSIUM FERTILIZER NUTRIENT	EROSION CONTROL BLANKET	TEMPORARY EROSION CONTROL SEEDING
	ACRE	POUND	POUND	POUND	SQ YD	POUND
LT STA 73+33 TO STA 74+85	0.14	12.60	12.60	12.60	332.22	28
LT STA 75+37 TO STA 77+29	0.15	13.50	13.50	13.50	363.33	30
RT STA 73+17 TO STA 75+25	0.15	13.50	13.50	13.50	370.00	30
RT STA 75+58 TO STA 77+20	0.06	5.40	5.40	5.40	215.56	12
TOTAL	0.50	45.00	45.00	45.00	1,281.11	100
USE	0.5	45	45	45	1281	100

TEMPORARY DITCH CHECKS

LOCATION	28000305
	FOOT
LT STA 74+80	8
LT STA 75+42	8
RT STA 75+11	8
RT STA 75+70	8
TOTAL	32

HMA RESURFACING

LOCATION	MILLING AND RESURFACING WIDTH	MILLING AND RESURFACING AREA	RESURFACING THICKNESS	40600290	40600982	40603310
				BITUMINOUS MATERIALS (TACK COAT)	HOT-MIX ASPHALT SURFACE REMOVAL - BUTT JOINT	HOT-MIX ASPHALT SURFACE COURSE, MIX "C", N50
				POUND	SQ YD	TON
STA 74+00.00 TO STA 74+60.00	22.00	146.67	1.500 TO 3.313	66.00	146.67	19.77
STA 74+60.00 TO STA 74+90.53	22.00	74.63	3.313 TO 3.313	33.58	74.63	13.85
STA 74+90.53 TO STA 75+55.47	28.00	SEE BRIDGE PLANS		95.20		24.40
STA 75+55.47 TO STA 75+86.00	22.00	74.63	3.313 TO 3.313	33.58	74.63	13.85
STA 75+86.00 TO STA 76+46.00	22.00	146.67	3.313 TO 1.500	66.00	146.67	19.77
TOTAL				294.36	442.60	91.64
USE				294	443	92

GUARDRAIL

LOCATION	63000001	63100087	63100167
	STEEL PLATE BEAM GUARD RAIL, TYPE A, 6 FOOT POSTS	TRAFFIC BARRIER TERMINAL, TYPE 6A	TRAFFIC BARRIER TERMINAL, TYPE 1 (SPECIAL) TANGENT
	FOOT	EACH	EACH
LT STA 73+63 TO STA 74+82.46	25	1	1
LT STA 75+47 TO STA 76+91.13	50	1	1
RT STA 73+55 TO STA 74+98.36	50	1	1
RT STA 75+64 TO STA 76+82.54	25	1	1
TOTAL	150	4	4

GUARDRAIL REMOVAL

LOCATION	63200310
	FOOT
LT STA 73+80 TO STA 74+82.00	102
LT STA 75+47 TO STA 76+49.00	102
RT STA 73+97 TO STA 74+99.00	102
RT STA 75+64 TO STA 76+66.00	102
TOTAL	408

GUARDRAIL REFLECTORS, TYPE A

LOCATION	78200005
	EACH
LT STA 74+13 TO STA 76+41.13	4
RT STA 75+97 TO STA 74+48.36	4
TOTAL	8

TERMINAL MARKER - DIRECT APPLIED

LOCATION	72501000
	EACH
LT STA 73+63	1
LT STA 76+91	1
RT STA 73+55	1
RT STA 76+83	1
TOTAL	4

AGGREGATE SHOULDERS, TYPE B

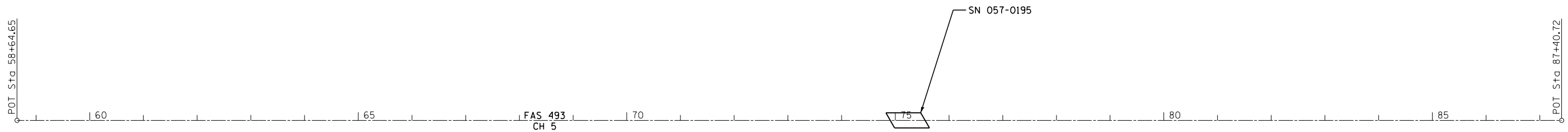
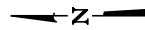
LOCATION	48101200
	TON
LT STA 73+33.00 TO STA 74+71.30	8.40
LT STA 75+60.23 TO STA 77+29.00	10.25
RT STA 75+74.73 TO STA 77+19.37	8.79
RT STA 73+17.00 TO STA 74+86.00	10.27
TOTAL	37.71
USE	38

SHORT-TERM PAVEMENT MARKING

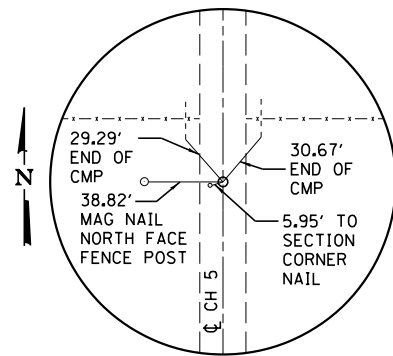
LOCATION	70300100	70300150
	SHORT TERM PAVEMENT MARKING	SHORT TERM PAVEMENT MARKING REMOVAL
	FOOT	SQ FT
SOLID WHITE EDGE LINE		
STA 74+00 TO STA 76+46.00		
YELLOW SKIP DASH		
STA 74+00 TO STA 76+46.00	28.00	9.33
TOTAL	28.00	9.33
USE	28	9

PAVEMENT MARKING

LOCATION	78001110	78001130
	PAINT PAVEMENT MARKING - LINE 4"	PAINT PAVEMENT MARKING - LINE 6"
	FOOT	FOOT
SOLID WHITE EDGE LINE		
STA 74+00 TO STA 76+46.00	492.00	
YELLOW SKIP DASH		
STA 74+00 TO STA 76+46.00		70.00
TOTAL	492	70



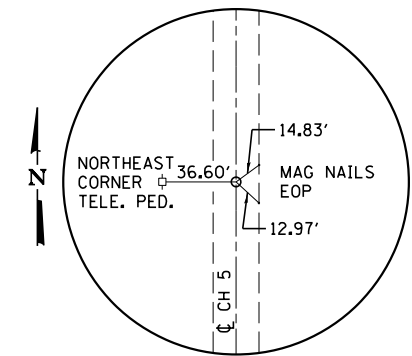
BM 4960-1 - CHISELED "□" ON TOP SE WINGWALL SN 057-0195
 STA 75+47.38 LT 15.31'
 ELEV 811.028



POT STA 58+64.65
MAG NAIL (SET)

FAS 493 (CH 5)			
CONTROL POINT	STATION	COORDINATES	
		NORTHING	EASTING
P.O.T	58+64.65	1380264.80	930524.31
P.O.T	87+40.72	1377388.74	930518.98

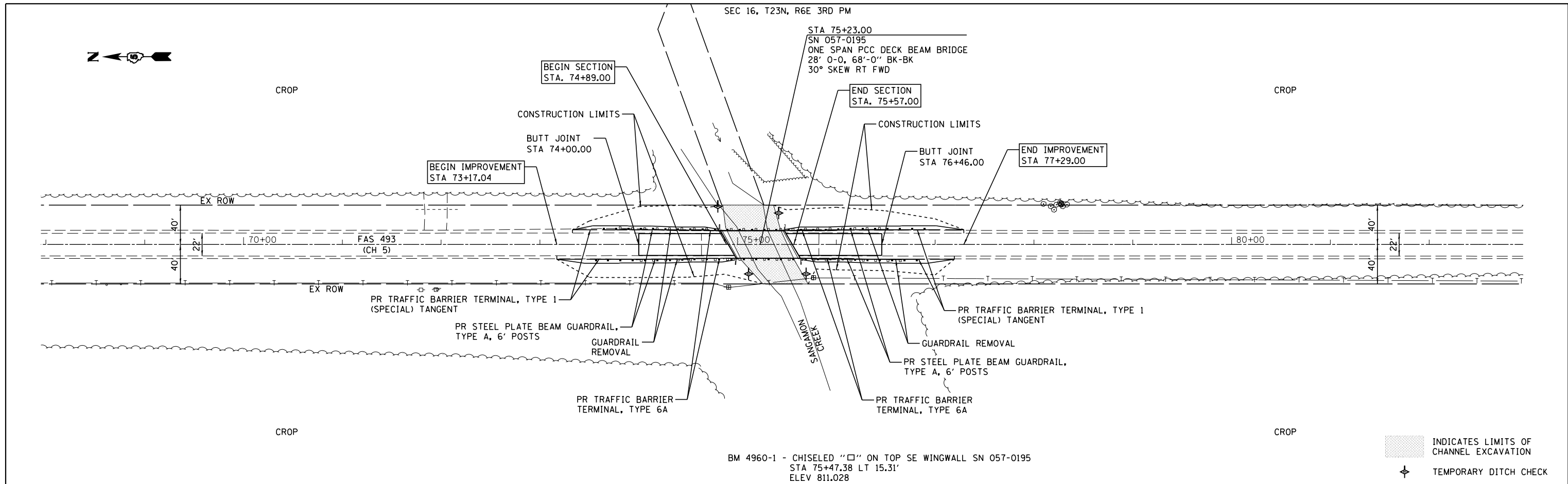
GROUND COORDINATES



POT STA 87+40.72
MAG NAIL (SET)

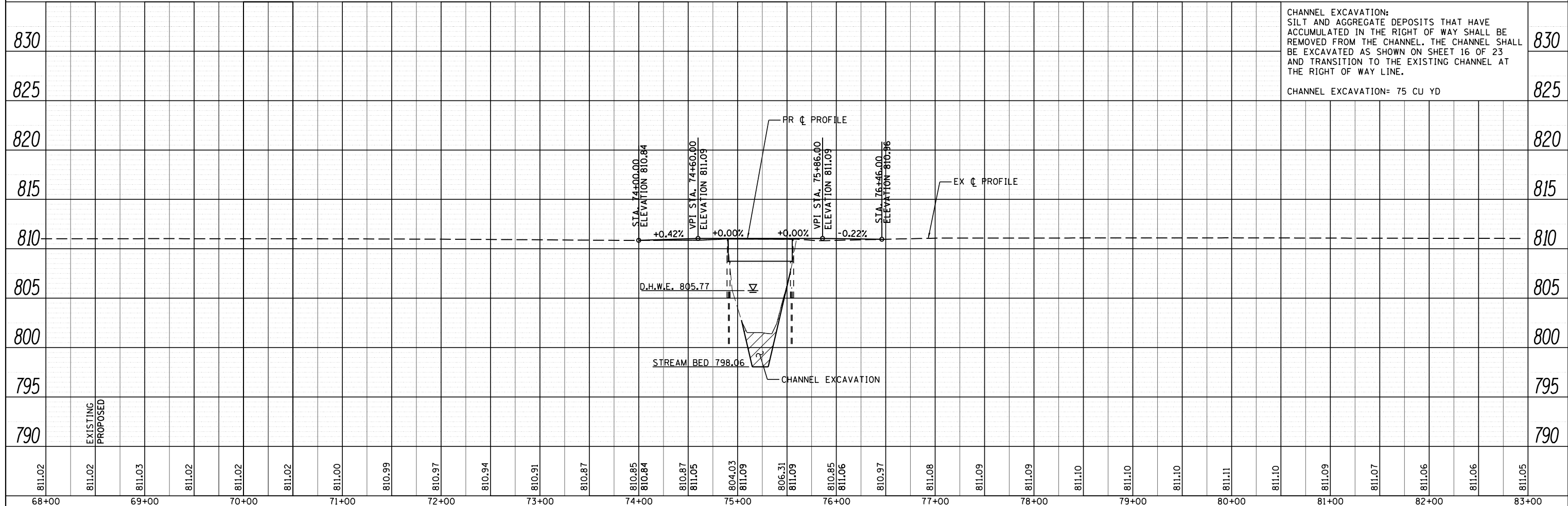
PLAN	SURVEYED	BY	DATE
	PLOTTED		
	NOTE BOOK		
	NO.		
	CHECKED		
	FILE NAME		

PROFILE	SURVEYED	BY	DATE
	GRADES		
	CHECKED		
	STRUCTURE		
	NOTATIONS		
	CHKD		
	NO.		



BM 4960-1 - CHISELED "□" ON TOP SE WINGWALL SN 057-0195
 STA 75+47.38 LT 15.31'
 ELEV 811.028

INDICATES LIMITS OF CHANNEL EXCAVATION
 TEMPORARY DITCH CHECK



811.02	811.02	811.03	811.02	811.02	811.02	811.00	810.99	810.97	810.94	810.91	810.87	810.85	810.84	810.87	811.05	804.03	811.09	806.31	811.09	810.85	811.06	810.97	811.08	811.09	811.09	811.10	811.10	811.10	811.11	811.10	811.09	811.07	811.06	811.06	811.05		
68+00	69+00	70+00	71+00	72+00	73+00	74+00	75+00	76+00	77+00	78+00	79+00	80+00	81+00	82+00	83+00																						

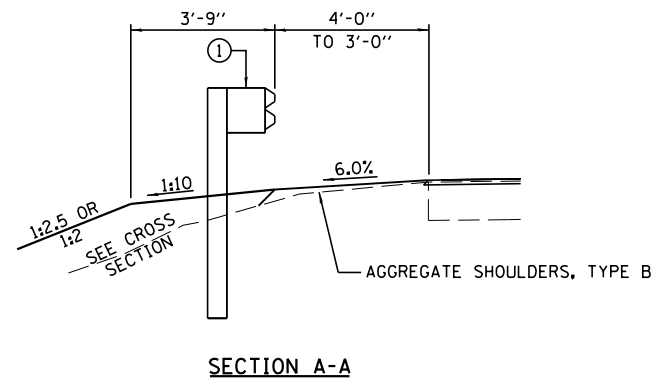
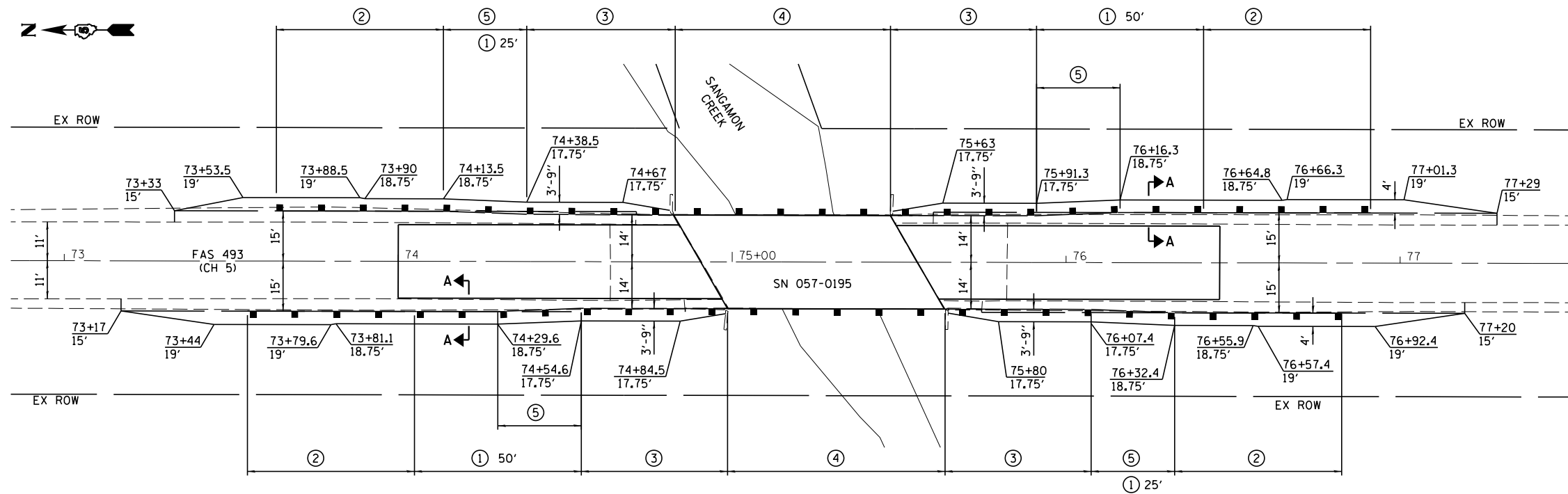
CEC Cummins Engineering Corporation
 Civil and Structural Engineering

JOB = 2399.1	DESIGNED - NAK	REVISED -
FILE NAME = 0570611-sht-plan.dgn	DRAWN - SJS	REVISED -
PLOT SCALE = 100.0000' / in.	CHECKED - NAK	REVISED -
PLOT DATE = 10/18/2016	DATE - 10/5/2015	REVISED -

STATE OF ILLINOIS
 DEPARTMENT OF TRANSPORTATION

SCALE:	SHEET NO.	OF	SHEETS	STA. 68+00 TO STA. 83+00
--------	-----------	----	--------	--------------------------

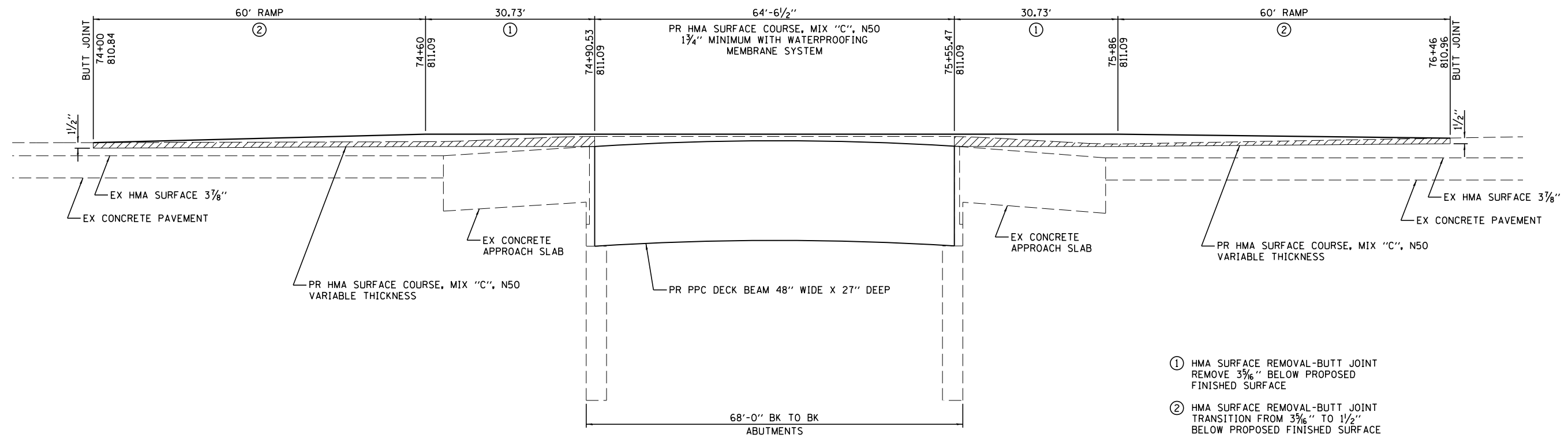
F.A.S. RTE.	SECTION	COUNTY	TOTAL SHEETS	SHEET NO.
493	25-B-NRS-BR-1	MCLEAN	23	10
FED. ROAD DIST. NO.	ILLINOIS FED. AID PROJECT	CONTRACT NO. 70611		



WIDEN EARTH SHOULDERS AT TYPE 1 (SPECIAL) TERMINALS AS SPECIFIED ON STANDARD 630301

LEGEND

- ① STEEL PLATE BEAM GUARDRAIL, TYPE A, 6 FOOT POSTS
- ② TRAFFIC BARRIER TERMINAL, TYPE 1 (SPECIAL) TANGENT
- ③ TRAFFIC BARRIER TERMINAL, TYPE 6A
- ④ STEEL RAILING, TYPE SM
- ⑤ 25' TRANSITION 14' TO 15' (☉ TO FACE OF RAIL)

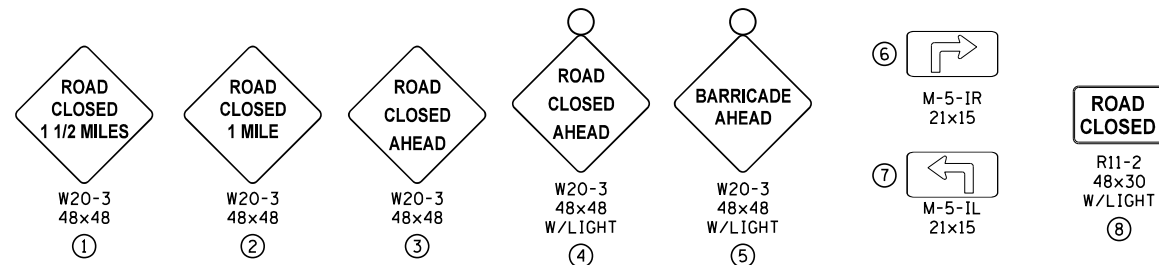


BUTT JOINT DETAILS

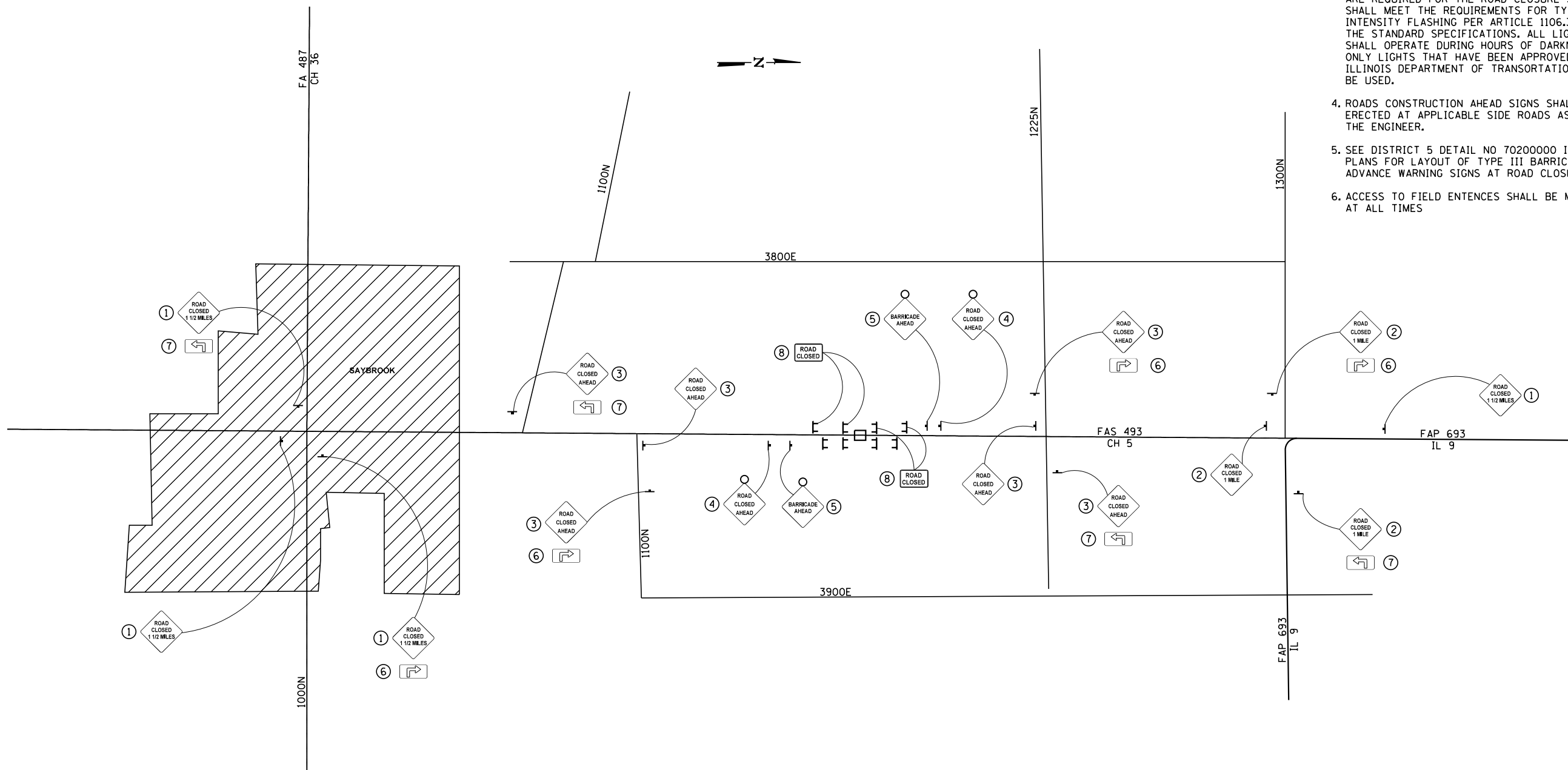
- ① HMA SURFACE REMOVAL-BUTT JOINT REMOVE 3 3/8" BELOW PROPOSED FINISHED SURFACE
- ② HMA SURFACE REMOVAL-BUTT JOINT TRANSITION FROM 3 7/8" TO 1 1/2" BELOW PROPOSED FINISHED SURFACE

STRINGLINE GRADE CONTROL SHALL BE REQUIRED FOR HMA SURFACE REMOVAL-BUTT JOINT AND HMA SURFACE COURSE. SEE SPECIAL PROVISIONS.

HMA SURFACE REMOVAL-BUTT JOINT 1 1/2" & VAR



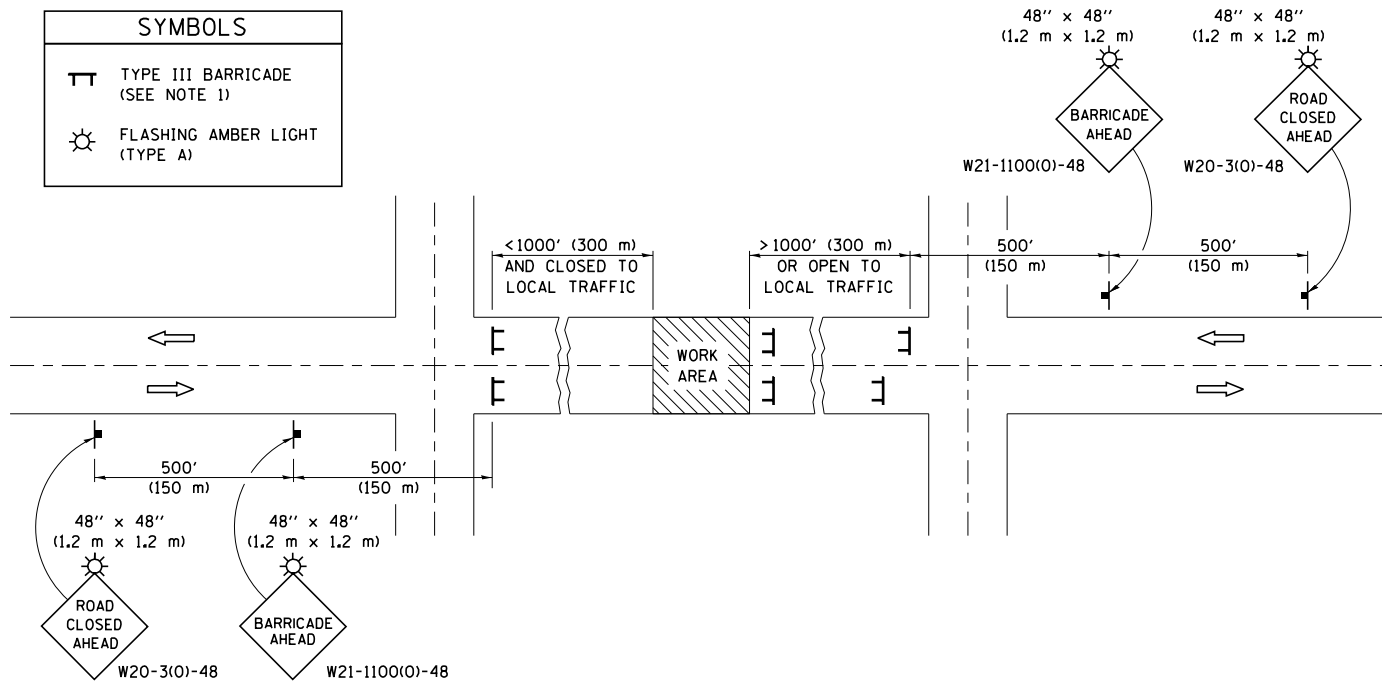
- NOTES**
- EXISTING SIGNS WHICH CONFLICT WITH THE ROAD CLOSURE SHALL BE COVERED. COST OF COVERING EXISTING SIGNS SHALL BE INCLUDED IN THE COST FOR TRAFFIC CONTROL AND PROTECTION (SPECIAL)
 - CH 5 SHALL NOT BE CLOSED UNTIL ALL ROAD CLOSURE SIGNING IS ERECTED AND APPROVED BY ENGINEER
 - AS A MINIMUM ALL AMBER FLASHING LIGHTS THAT ARE REQUIRED FOR THE ROAD CLOSURE SIGNING SHALL MEET THE REQUIREMENTS FOR TYPE A-LOW INTENSITY FLASHING PER ARTICLE 1106.3 OF THE STANDARD SPECIFICATIONS. ALL LIGHTS SHALL OPERATE DURING HOURS OF DARKNESS. ONLY LIGHTS THAT HAVE BEEN APPROVED BY THE ILLINOIS DEPARTMENT OF TRANSPORTATION SHALL BE USED.
 - ROADS CONSTRUCTION AHEAD SIGNS SHALL BE ERECTED AT APPLICABLE SIDE ROADS AS DIRECTED THE ENGINEER.
 - SEE DISTRICT 5 DETAIL NO 70200000 INCLUDED IN PLANS FOR LAYOUT OF TYPE III BARRICADES AND ADVANCE WARNING SIGNS AT ROAD CLOSURE.
 - ACCESS TO FIELD ENTENCES SHALL BE MAINTAINED AT ALL TIMES



ROAD CLOSURE

SIDEROAD / STREET CLOSURE

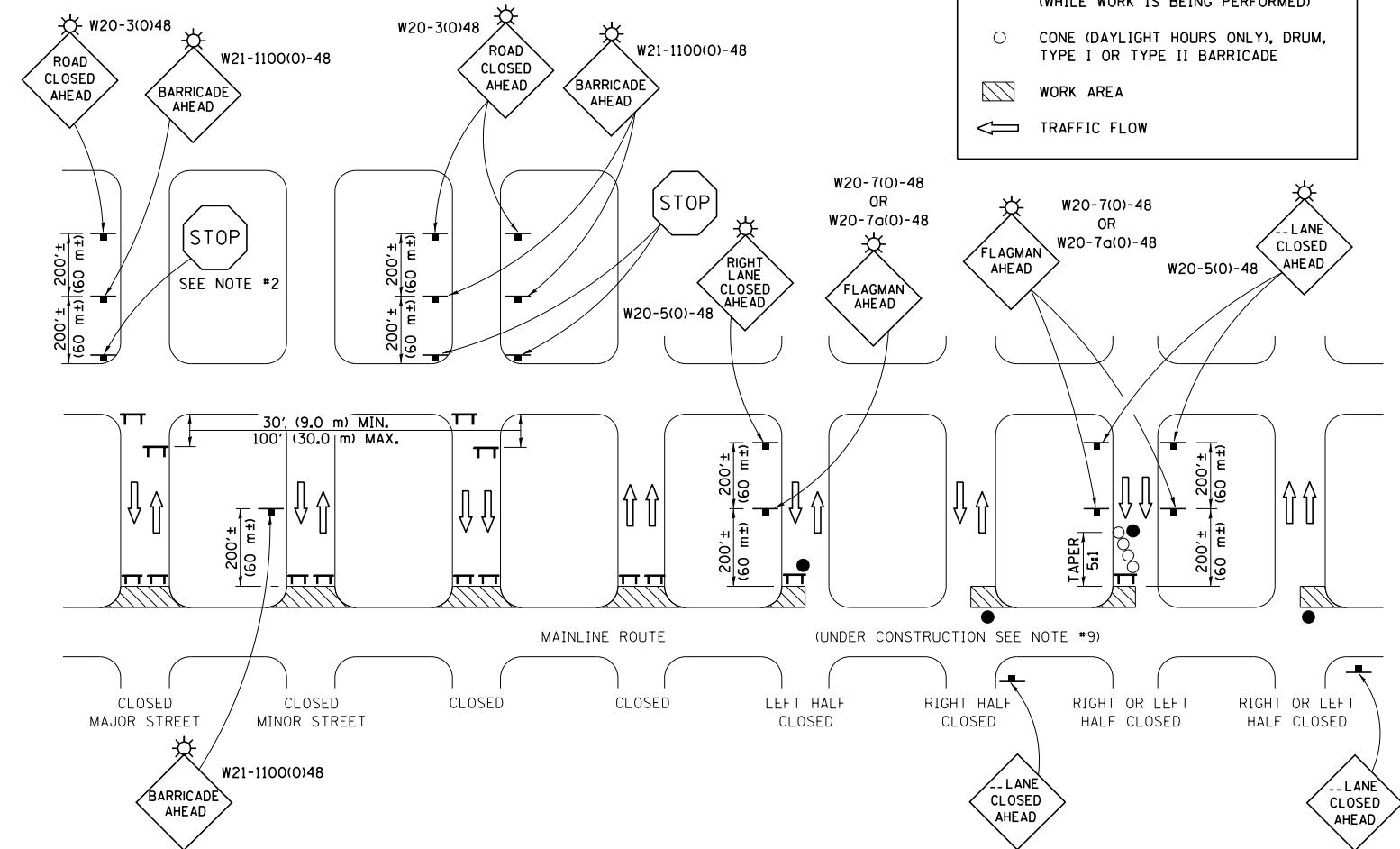
SYMBOLS	
	TYPE III BARRICADE (SEE NOTE 1)
	FLASHING AMBER LIGHT (TYPE A)



GENERAL NOTES

- TYPE III BARRICADES SHALL BE AS SHOWN ON STANDARD 701901 "TYPICAL APPLICATIONS OF TYPE III BARRICADES CLOSING A ROAD". EACH TYPE III BARRICADE SHALL HAVE TWO FLASHING AMBER LIGHTS MOUNTED ABOVE IT.
- IF THE ROAD IS OPEN TO LOCAL TRAFFIC OR EXCEEDS 1000' (300 m), ANOTHER SET OF TYPE III BARRICADES, EQUIPPED AS IN NOTE 1 ABOVE, SHALL BE PLACED AT EACH END OF THE WORK AREA.
- WHEN A STOP CONDITION EXISTS, NO SIGNS ARE REQUIRED IN ADVANCE OF THE "STOP" SIGN WHEN THE ROAD IS CLOSED WITHIN 100' (30 m) OF THE INTERSECTION.
- STANDARD 701901 SHALL APPLY FOR THE PLACEMENT & DESIGN OF TYPE III BARRICADES.
- IF A TYPE III BARRICADE WITH AN ATTACHED SIGN PANEL WHICH MEETS NCHRP 350 IS NOT AVAILABLE, THE SIGNS MAY BE MOUNTED ON AN NCHRP 350 TEMPORARY SIGN SUPPORT DIRECTLY IN FRONT OF THE BARRICADE.
- REFLECTORIZED STRIPING SHALL APPEAR ON BOTH SIDES OF THE TYPE III BARRICADES IF ROAD IS OPEN TO LOCAL TRAFFIC.
- ALL SIGNS SHALL BE POST MOUNTED IF THE CLOSURE TIME EXCEEDS FOUR DAYS.
- A MINIMUM OF TWO FLASHING LIGHTS SHALL BE USED AT NIGHT ON EACH APPROACH IN ADVANCE OF THE WORK AREA. FLASHING LIGHTS SHALL BE INSTALLED ABOVE THE FIRST TWO SIGNS IN THE SERIES.
- LONGITUDINAL DIMENSIONS MAY BE ADJUSTED SLIGHTLY TO FIT FIELD CONDITIONS.
- FORMS BT. 725 AND BT. 726 ARE REQUIRED.
- WHEN A SIDEROAD INTERSECTS THE HIGHWAY ON WHICH WORK IS BEING PERFORMED, ADDITIONAL TRAFFIC DEVICES SHALL BE ERECTED AND PROVIDED AS DIRECTED BY THE ENGINEER.
- AN ADDITIONAL SIGN MAY BE REQUIRED AT A MAJOR INTERSECTING ROAD IN ADVANCE OF THE CLOSURE. THE ADDITIONAL SIGN SHALL GIVE THE DISTANCE TO THE BARRICADE IN MILES OR FRACTIONS OF A MILE.

SYMBOLS	
	TYPE III BARRICADE (SEE NOTE)
	FLASHING LIGHT
	FLAGGER WITH TRAFFIC CONTROL SIGN (WHILE WORK IS BEING PERFORMED)
	CONES (DAYLIGHT HOURS ONLY), DRUM, TYPE I OR TYPE II BARRICADE
	WORK AREA
	TRAFFIC FLOW

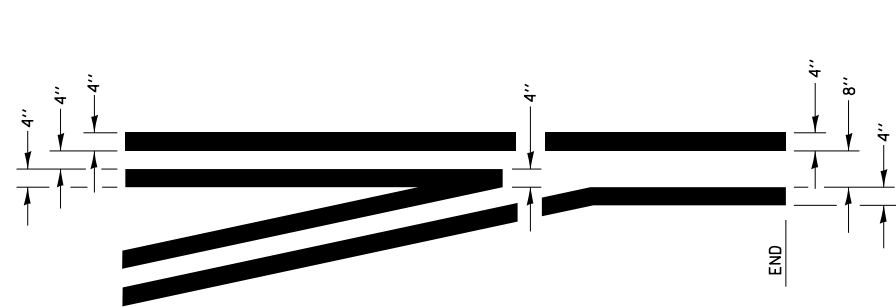


GENERAL NOTES

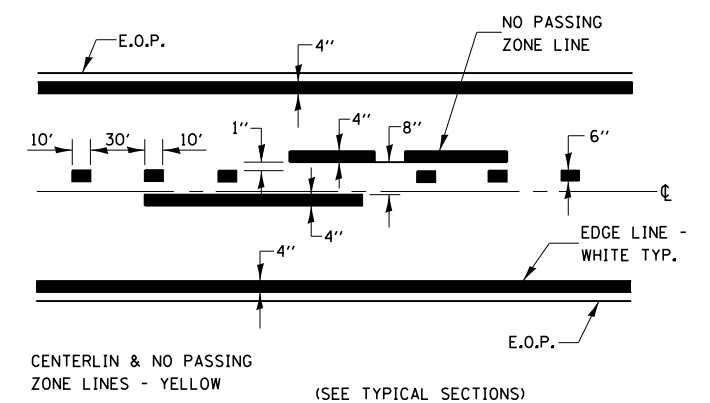
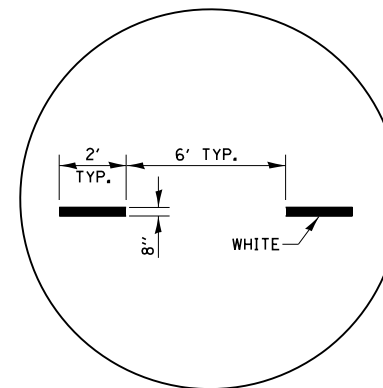
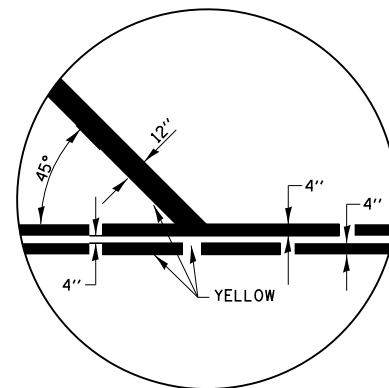
- TYPE III BARRICADES SHALL BE AS SHOWN ON "TYPICAL APPLICATIONS OF TYPE III BARRICADES CLOSING A ROAD". EACH TYPE III BARRICADE SHALL HAVE TWO FLASHING AMBER LIGHTS MOUNTED ABOVE IT.
- WHERE A STOP CONDITION EXISTS, AS SHOWN ABOVE, WARNING SIGNS MAY BE OMITTED IN ADVANCE OF THE "STOP" SIGN.
- STANDARD 701901 SHALL APPLY FOR THE PLACEMENT & MANUFACTURE OF TYPE III BARRICADES.
- ALL SIGNS SHALL BE POST MOUNTED IF THE CLOSURE TIME EXCEEDS FOUR DAYS.
- ONE FLASHING LIGHT IS REQUIRED ABOVE EACH ADVANCE WARNING SIGN DURING HOURS OF DARKNESS.
- LONGITUDINAL DIMENSIONS MAY BE ADJUSTED SLIGHTLY TO FIT FIELD CONDITIONS.
- FORMS BT 725 AND BT 726 ARE REQUIRED.
- THE MAINLINE ROUTE TEMPORARY TRAFFIC CONTROL SHALL BE IN ACCORDANCE WITH THE PLANS, SPECIAL PROVISIONS AND STANDARD SPECIFICATIONS.
- ALL FLAGGERS REQUIRED AT SIDE ROADS AND ENTRANCES REMAINING OPEN TO TRAFFIC AND/OR ADDITIONAL BARRICADES REQUIRED BY THE ENGINEER TO CLOSE SIDE ROADS AND ENTRANCES WILL BE PAID FOR ACCORDING TO ARTICLE 109.04.

Note: All dimensions are in INCHES (millimeters) unless otherwise shown.

DISTRICT 5 DETAIL NO. 7020000

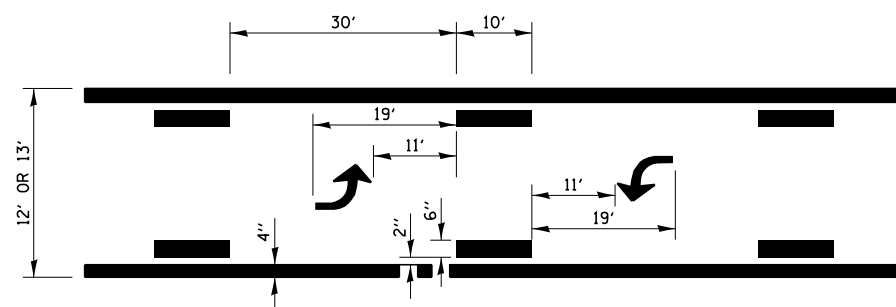


**TYPICAL APPLICATION
LEFT TURN LANES**

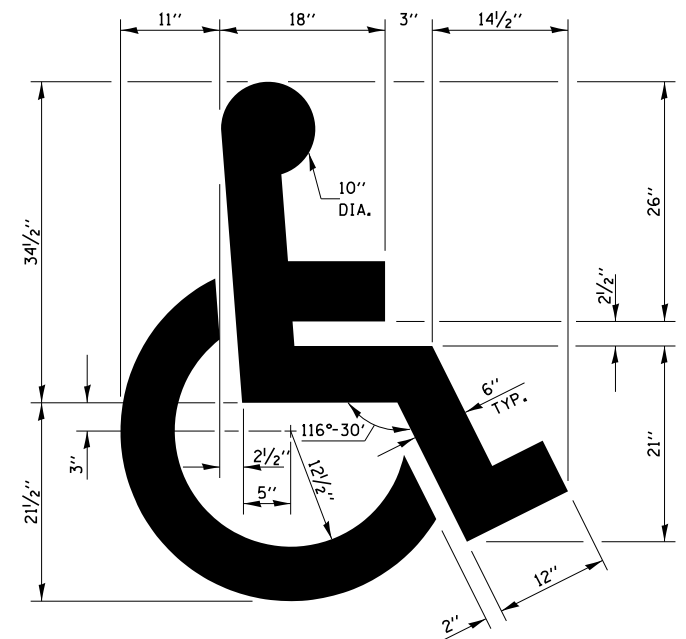
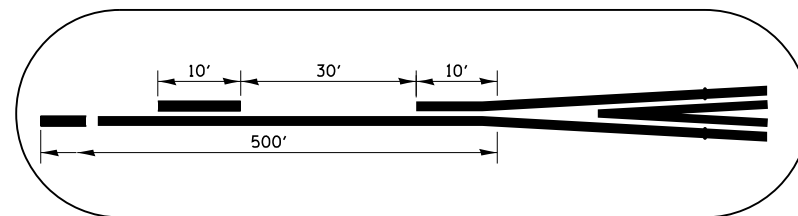
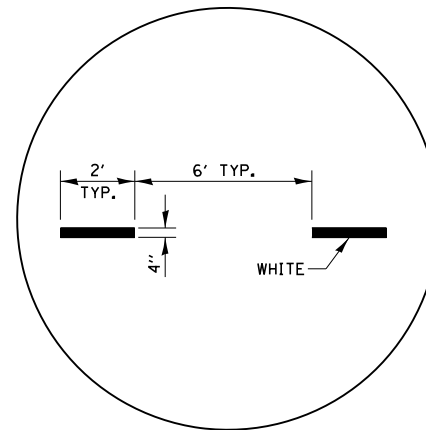


CENTERLIN & NO PASSING ZONE LINES - YELLOW
(SEE TYPICAL SECTIONS)

PAVEMENT MARKING



**TYPICAL APPLICATION
BI-DIRECTIONAL TURN LANE**



**TYPICAL DETAIL FOR
PAINTING HANDICAP MARKINGS**

Note: All dimensions are in INCHES (millimeters) unless otherwise shown.

DISTRICT 5 DETAIL NO. 7800CCCC



JOB = 2399.1	DESIGNED - NAK	REVISED -
FILE NAME = 7800cccc.dgn	DRAWN - SJS	REVISED -
PLOT SCALE = 40.000' / 1" =	CHECKED - NAK	REVISED -
PLOT DATE = 10/17/2016	DATE - 10/9/2015	REVISED -

**STATE OF ILLINOIS
DEPARTMENT OF TRANSPORTATION**

PAVEMENT MARKING (MCLEAN COUNTY "SPOT" IMPROVEMENTS ONLY)

SCALE:	SHEET NO.	OF	SHEETS	STA.	TO STA.
--------	-----------	----	--------	------	---------

F.A.S. RTE.	SECTION	COUNTY	TOTAL SHEETS	SHEET NO.
493	25-B-NRS-BR-1	MCLEAN	23	15
FED. ROAD DIST. NO. ILLINOIS FED. AID PROJECT			CONTRACT NO. 70611	

Bench Mark B.M. 4960-1 Chiseled square on the top of the SE wingwall of SN. 057-0195 Sta. 75+47.38 15.31' Lt. Elevation 811.03

Existing Structure: S.N. 057-0195 is a single span PPC deck beam bridge, originally built in 1984 as FAS Route 493 (CH 5), Section 25B-NRS-BR at Station 75+23.00. Both abutments are open stub abutments supported on concrete piles. The back to back of abutment length is 68'-0", the out to out of deck width is 28'-0" with a clear roadway width of 22'-0" and a 30° right-forward skew.

Traffic will be detoured.

No Salvage.

INDEX OF SHEETS

1. General Plan and Elevation
2. Superstructure Details
3. Steel Railing, Type SM
4. 27"x48" PCC Deck Beam
5. 27"x48" PCC Deck Beam Details
6. Abutment Repair Details

GENERAL NOTES

Reinforcement bars designated (E) shall be epoxy coated.

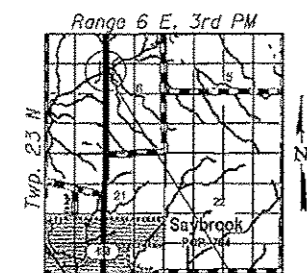
Plan dimensions and details relative to existing plans are subject to nominal construction variations. The Contractor shall field verify existing dimensions and details affecting new construction and make necessary approved adjustments prior to construction or ordering of materials. Such variations shall not be cause for additional compensation for a change in scope of the work, however, the Contractor will be paid for the quantity actually furnished at the unit price bid for the work.

Removal of existing Wearing Surface and S-1 Railing is included in the cost of Removal of Existing Superstructures.

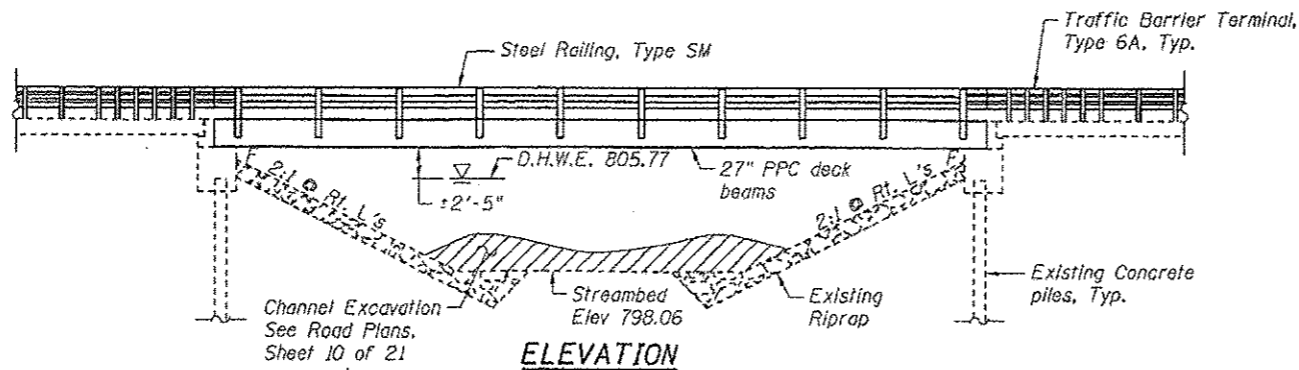
See General Note Z0038 on Sheet 2 of 23 for Permanent Bench Mark.

TOTAL BILL OF MATERIAL

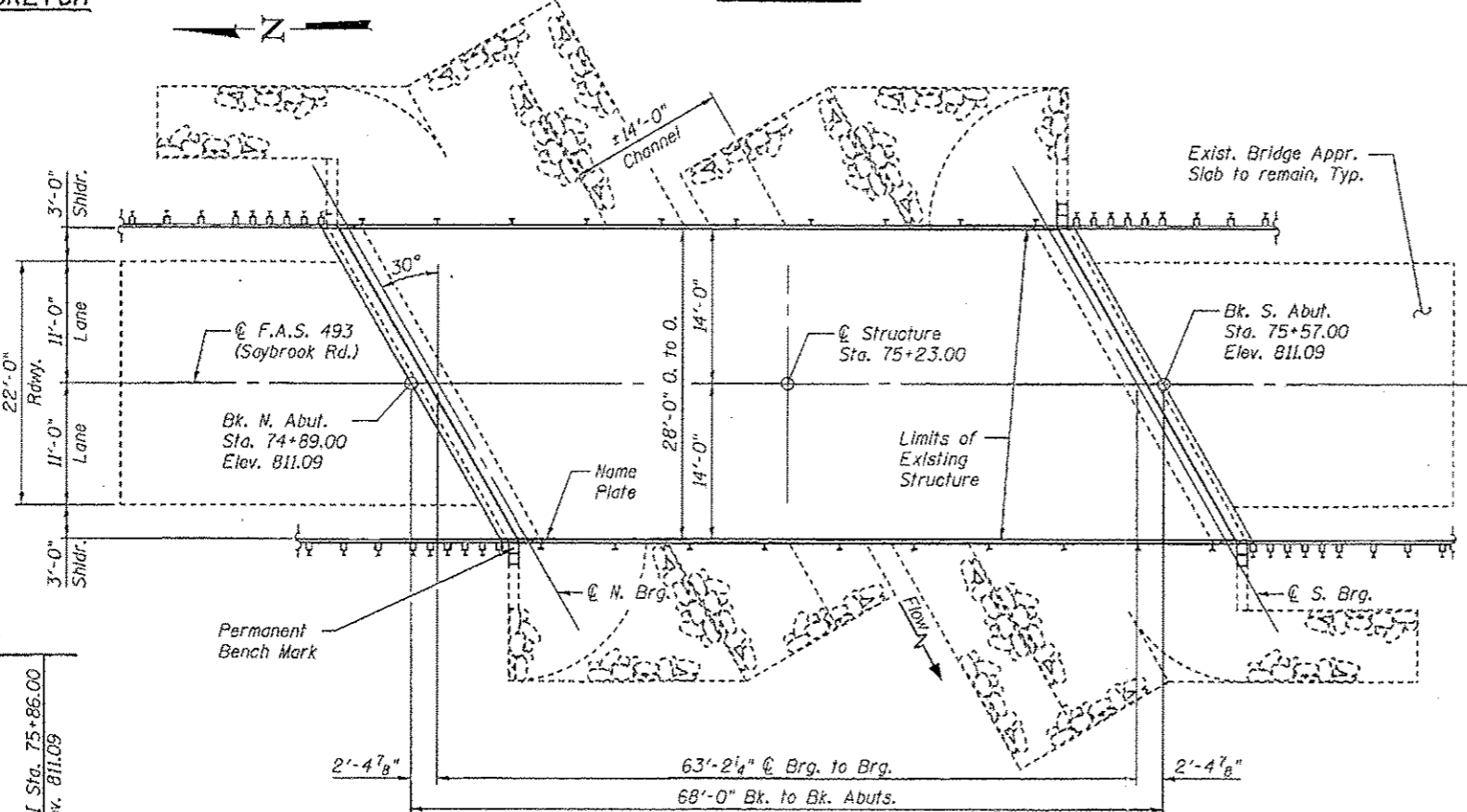
ITEM	UNIT	SUPER	SUB	TOTAL
Hot-Mix Asphalt Surface Course, Mix "C", NSO	Ton	24.4		24.4
Removal of Existing Superstructures	Each	1		1
Concrete Removal	Cu. Yd.		0.6	0.6
Concrete Structures	Cu. Yd.		0.6	0.6
Precast Prestressed Concrete Deck Beams (27" depth)	Sq. Ft.	1808		1808
Steel Railing, Type SM	Foot	130		130
Name Plates	Each	1		1
Waterproofing Membrane System	Sq. Yd.	201		201
Portland Cement Mortar Fairing Course	Foot	388		388
Approach Slab Repair (Partial Depth)	Sq. Yd.	15		15
Structural Repair of Concrete (Depth Equal to or Less Than 5 IN.)	Sq. Ft.		206	206
Permanent Bench Mark	Each		1	1



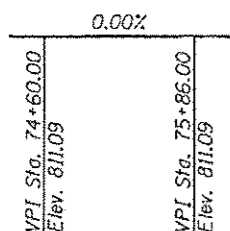
Proposed Improvement
LOCATION SKETCH



ELEVATION



PLAN



PROFILE GRADE
(Along & Rdwy.)

STATION 75+23.00
RE-BUILT 2017 BY
STATE OF ILLINOIS
FAS RTE 493 SEC 25-B-NRS-BR-1
LOADING HL-93
STRUCTURE NO. 057-0195

NAME PLATE
See Std. 515001

Existing Name Plate shall be cleaned and relocated next to the new Name Plate. Cost included in "Name Plates".

LOADING HL-93

(NEW CONSTRUCTION)

Allow 25#/sq. ft. for future wearing surface.

DESIGN SPECIFICATIONS

(NEW CONSTRUCTION)

2014 AASHTO LRFD Bridge Design Specifications, 7th Edition with 2015 & 2016 Interims
1995 Seismic Retrofit Manual

DESIGN STRESSES

FIELD & EXISTING UNITS

f'c = 3,500 psi
fy = 60,000 psi (Reinforcement)

PRECAST PRESTRESSED UNITS

f'c = 6,000 psi
f'cl = 5,000 psi
fpu = 270,000 psi (1/2" low relax strands)
fpbl = 201,960 psi (1/2" low relax strands)

SEISMIC DATA

Seismic Performance Category (SPC) = A
Horizontal Bedrock Acceleration Coefficient (A) = 0.045g
Site Coefficient (S) = 1.5

DESIGN SCOUR ELEVATION TABLE

Event/Limit State	Design Scour Elevations (ft.)		Item
	N. Abut.	S. Abut.	
Q100	-	-	5
Q200	-	-	
Design	804.60	804.69	
Check	804.60	804.69	

WATERWAY INFORMATION

Drainage Area = 5.25 Miles Low Grade Elev. 810.85 Ft. @ Sta. 74+00.00

Flood	Freq. Yr.	Q C.F.S.	Opening Sq. Ft.		Nat. H.W.E.	Head - Ft.		Headwater El.	
			Exlst. Prop.	231		Exlst. Prop.	Exlst. Prop.	Exlst. Prop.	Exlst. Prop.
Design	30	994	233	231	805.77	0.74	0.70	806.51	806.47
Base	100	1292	243	246	806.07	1.14	1.08	807.21	807.15
Max. Calc.	500	1687	-	264	807.47	-	1.66	-	809.13

Information per 1984 as-built construction plans.
Elevation adjusted from NGVD 29 (assumed) to NAVD 88.

APPROVED
For Structural Adequacy Only

Michael D. Cummins
Engineer of Bridges & Structures



Michael D. Cummins 12-2-16
(Expires 11/30/18)

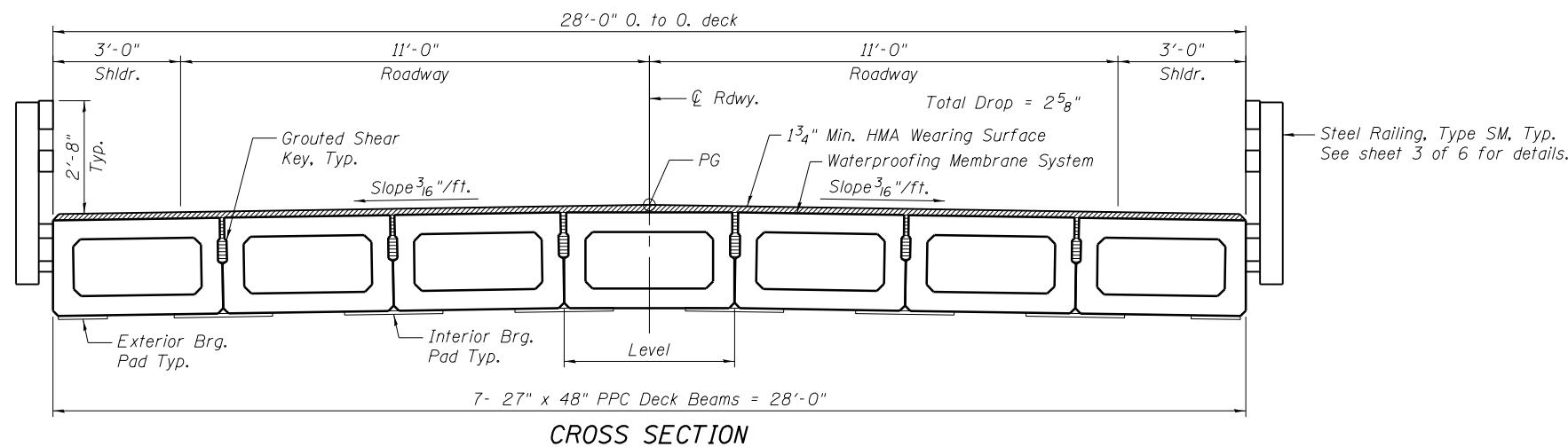
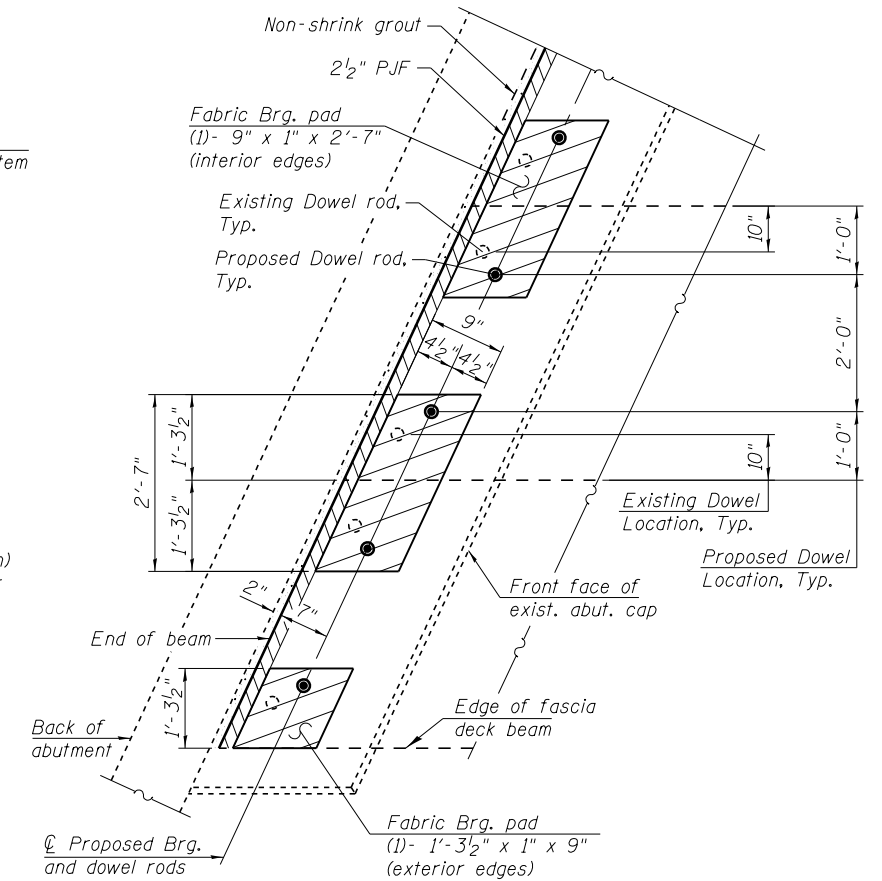
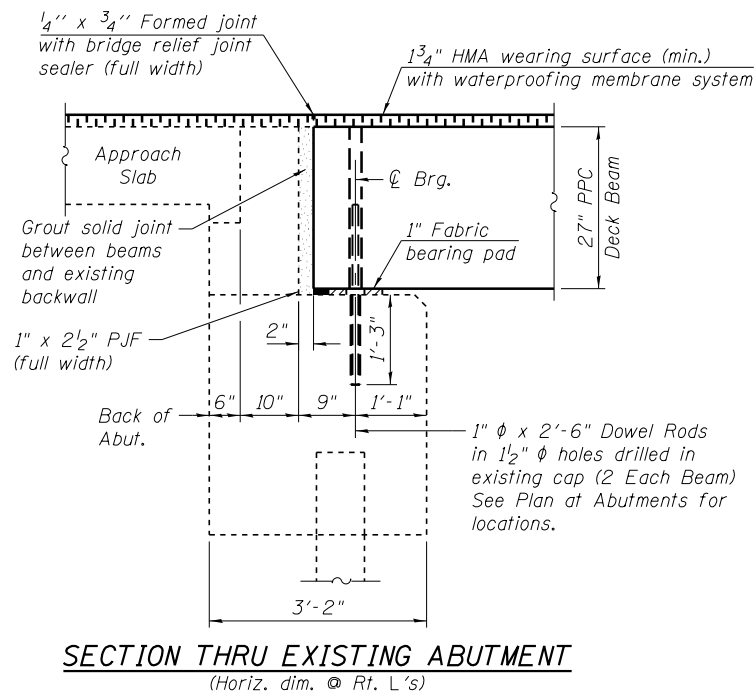
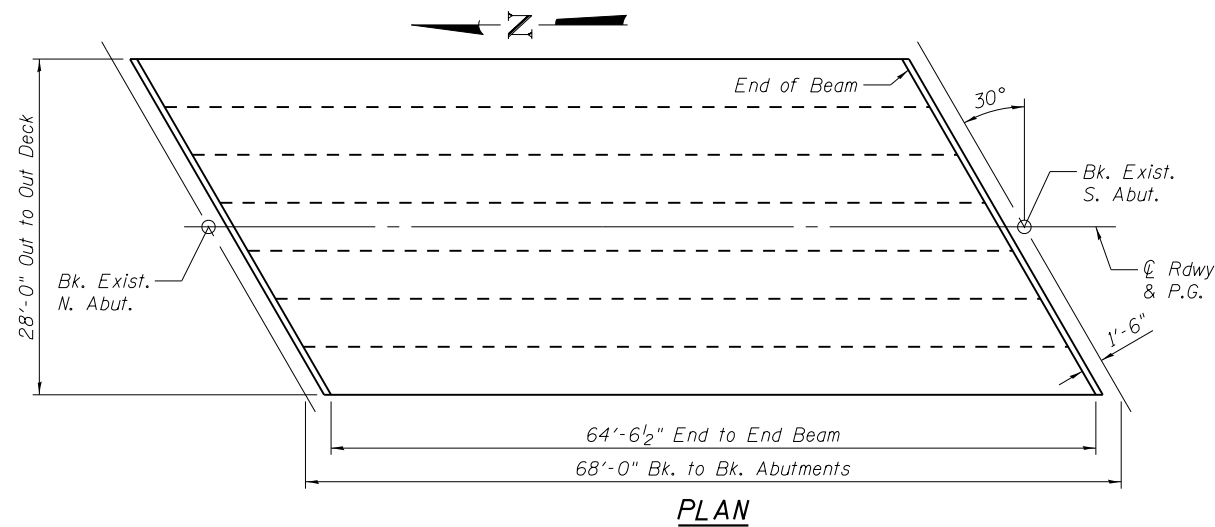
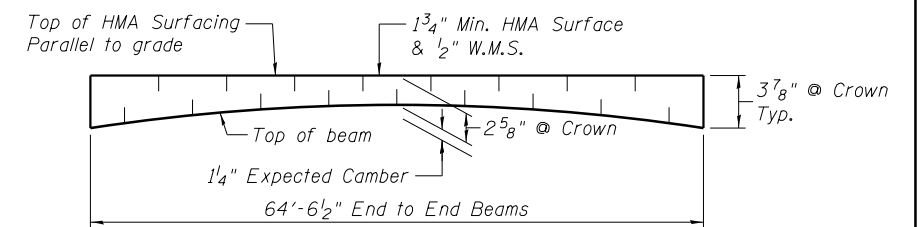
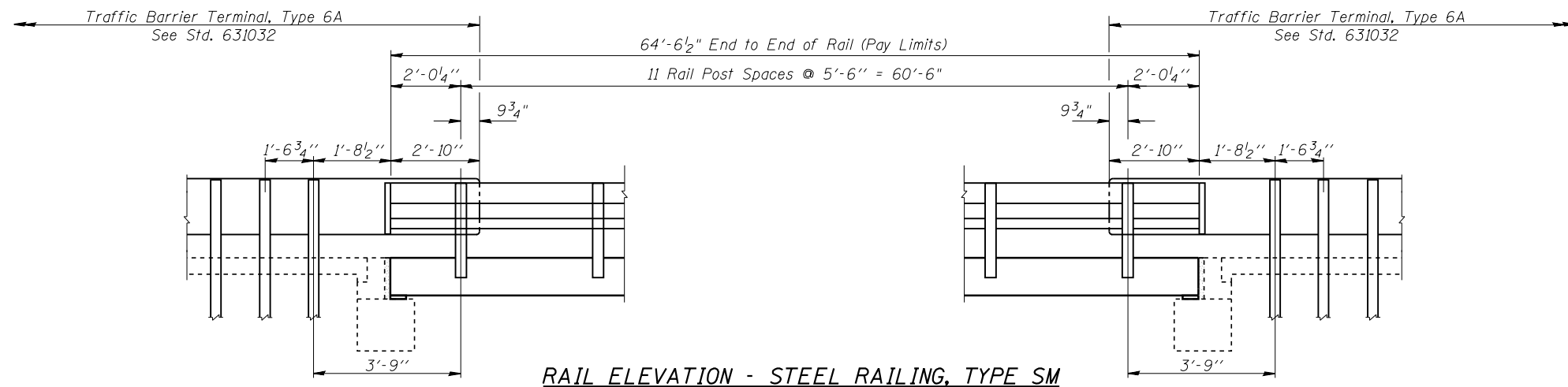
GENERAL PLAN AND ELEVATION
CH 5 OVER SANGAMON CREEK
F.A.S. ROUTE 493
SECTION 25-B-NRS-BR-1
MCLEAN COUNTY
STA 75+23.00
STRUCTURE NO. 057-0195



JOB # 2399.1	DESIGNED - AAN	REVISED -
FILE # 057-0195-0578811-01-GPE.dgn	CHECKED - MDC	REVISED -
DATE # 12/2/2016	DRAWN - SJS	REVISED -
	CHECKED - MDC	REVISED -

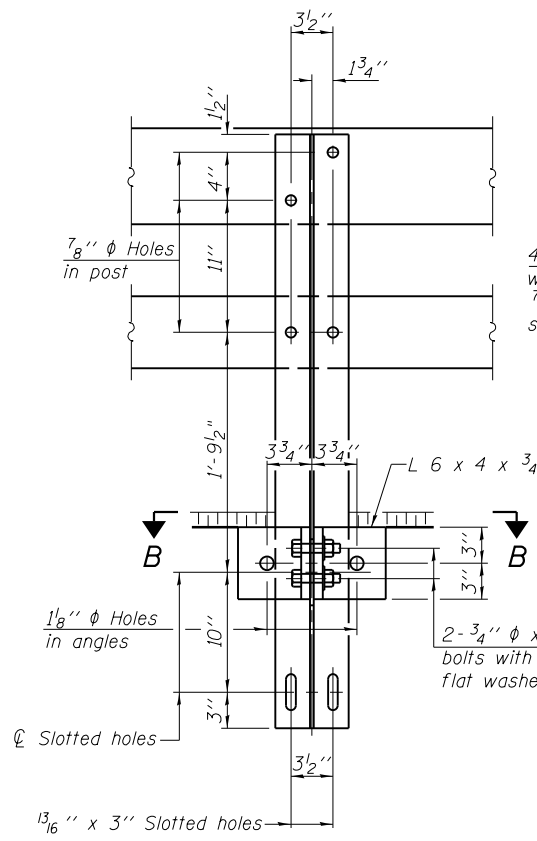
STATE OF ILLINOIS
DEPARTMENT OF TRANSPORTATION

F.A.S. RTE.	SECTION	COUNTY	TOTAL SHEETS	SHEET NO.
493	25-B-NRS-BR-1	MCLEAN	23	16
				CONTRACT NO. 70611

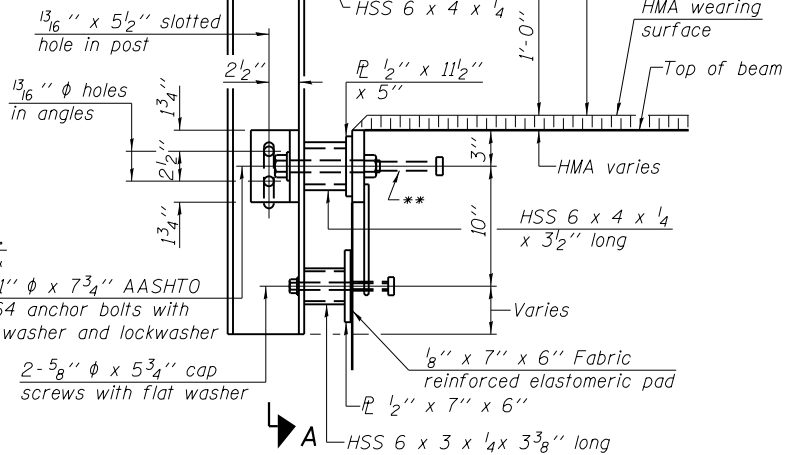


BILL OF MATERIAL

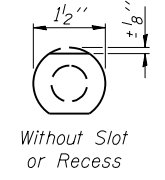
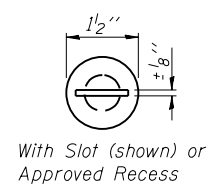
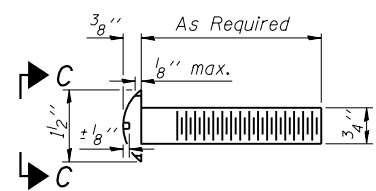
ITEM	UNIT	QUANTITY
Hot-Mix Asphalt Surface Course, Mix "C", N50	Ton	24.4
Waterproofing Membrane System	Sq. Yd.	201
Portland Cement Mortar Fairing Course	Foot	388



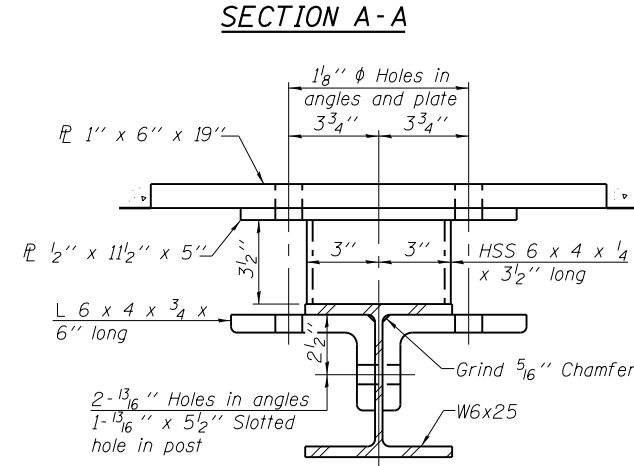
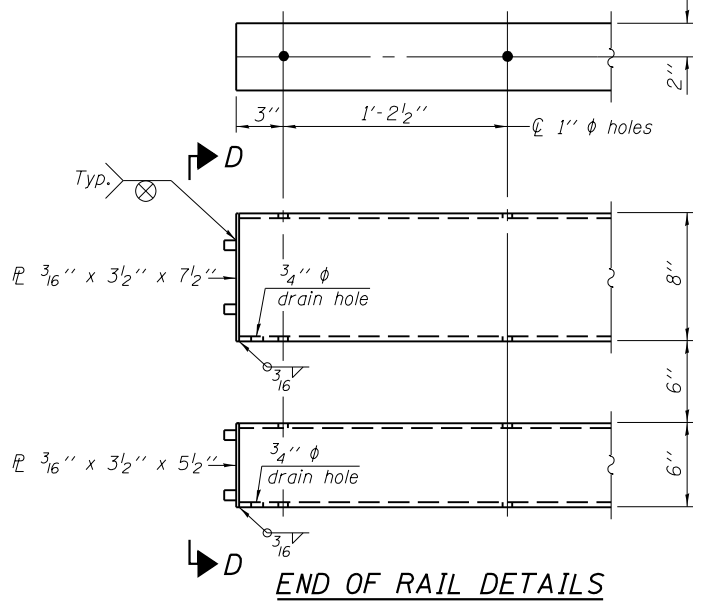
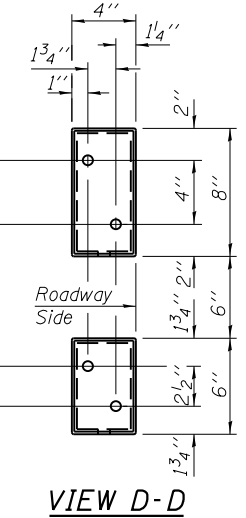
4-3/4" φ x 6" Round Head Bolts with locknut & flat washer.
7/8" φ holes in hollow structural section may be drilled in the field.



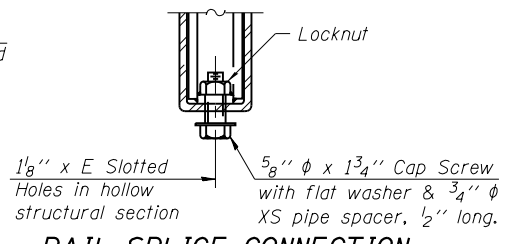
DETAIL OF 3/4" φ ROUND HEAD BOLT



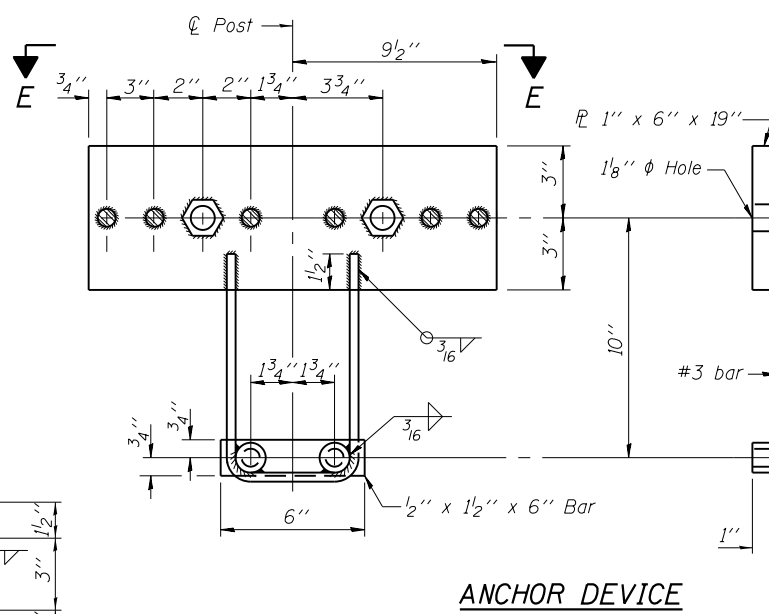
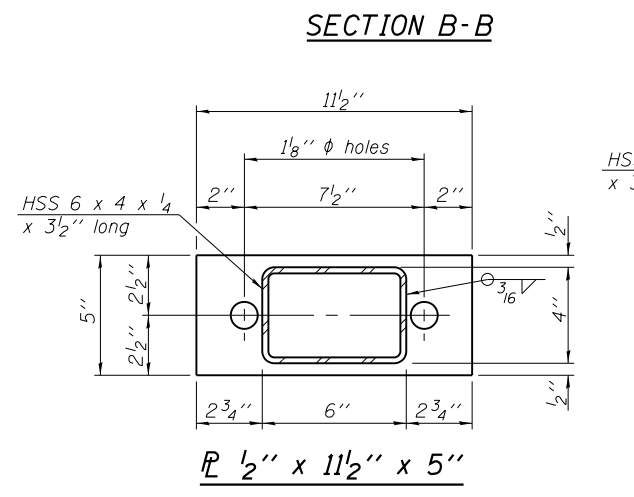
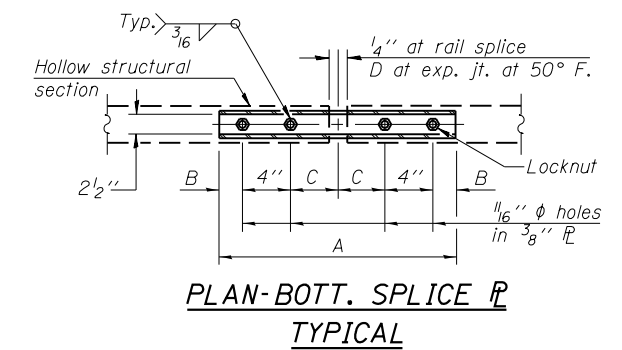
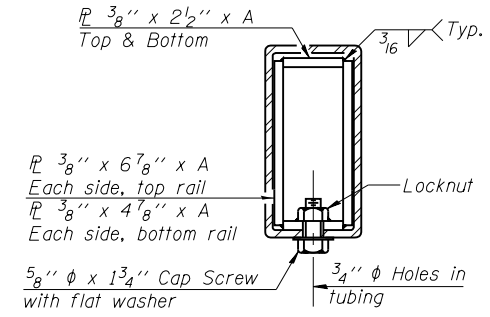
4-5/8" reduced base welded studs. Provide 4-5/8" washers and self-locking nuts or nuts and jam nuts for guardrail connection shown on Std. 631032.



RAIL SPLICE CONNECTION AT EXPANSION JT.



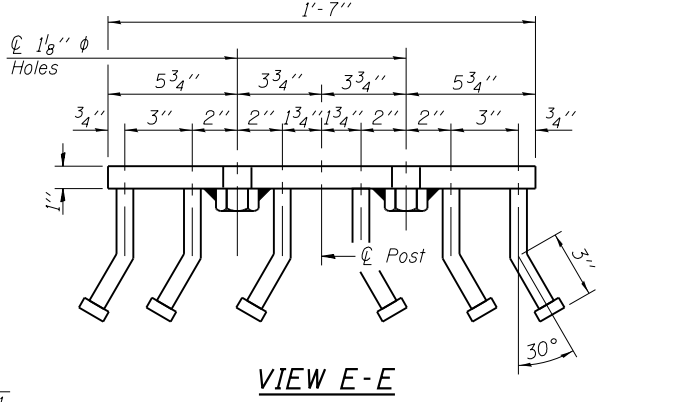
SECTION AT RAIL SPLICE



SPLICE DIMENSIONS

T	D	A	B	C	E
≤ 4"	2 1/2"	1'-8"	2"	4"	2 1/2"
> 4" ≤ 6 1/2"	3 3/4"	2'-0"	2 1/2"	5 1/2"	3 1/2"
> 6 1/2" ≤ 9"	5"	2'-4"	3 1/2"	6 1/2"	9"
> 9" ≤ 13"	7"	2'-10"	4 1/2"	8 1/2"	11"
Rail Splice	1/4"	1'-8"	2"	4"	

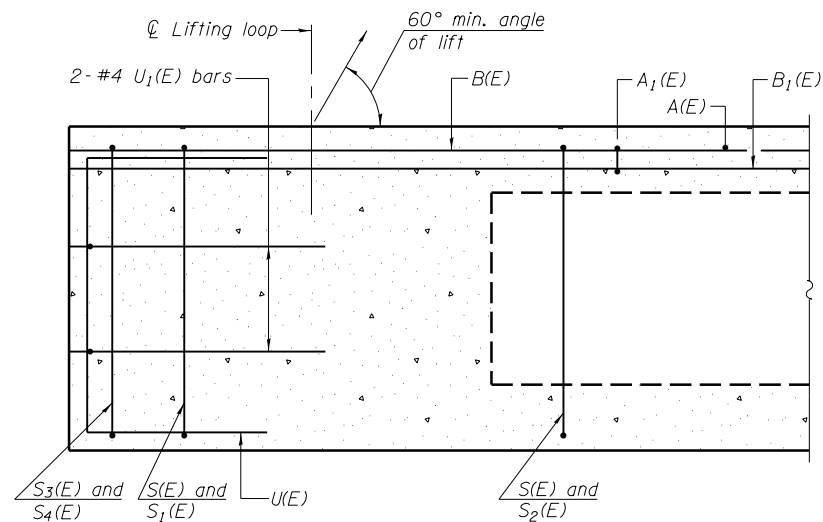
T = Total movement at expansion joint as shown on the design plans.



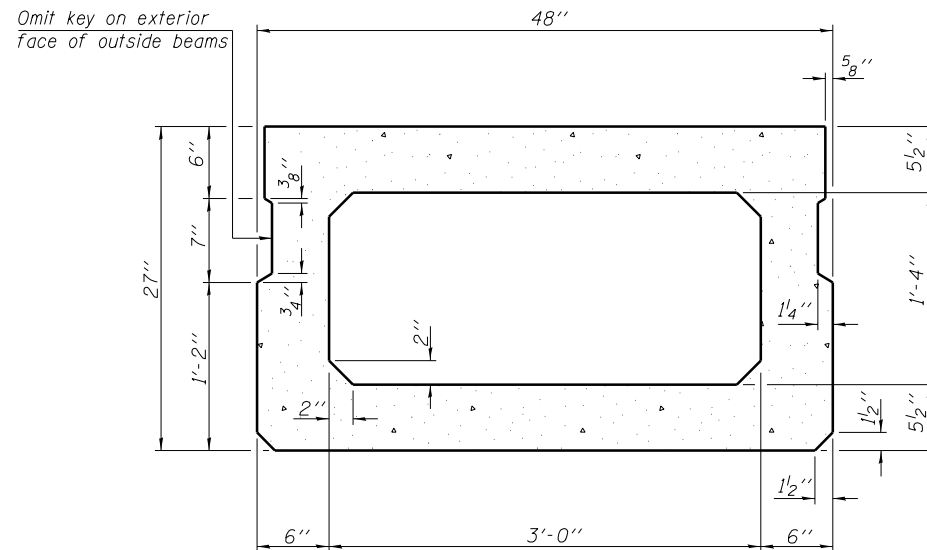
Notes:
For multi-span bridges, sufficient 1/4" x 6" x 1'-2" galvanized steel shims shall be provided to align rail between adjacent spans. Cost included with Steel Railing, Type SM.
All steel rail members shall be galvanized according to Article 509.05 of the Standard Specifications.
* The studs of the anchor devices shall be placed below the top reinforcement bars and the outermost longitudinal reinforcement bar shall be placed directly above the studs of the rail post anchor device.

BILL OF MATERIAL

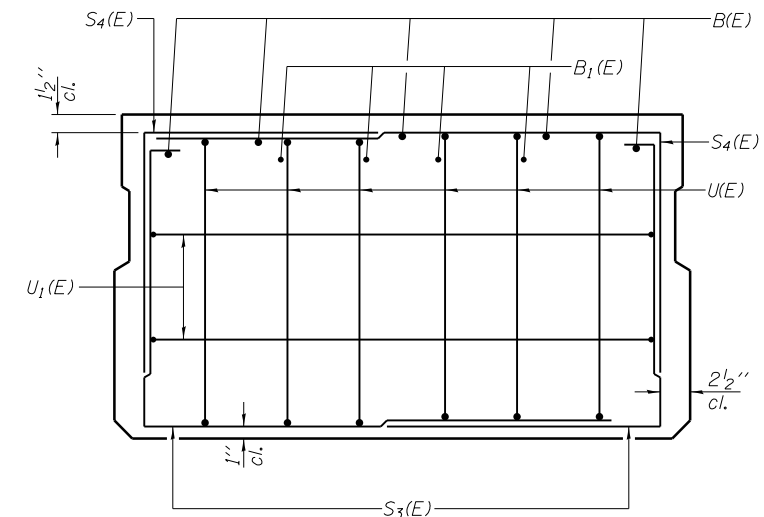
Item	Unit	Quantity
Steel Railing, Type SM	Foot	130



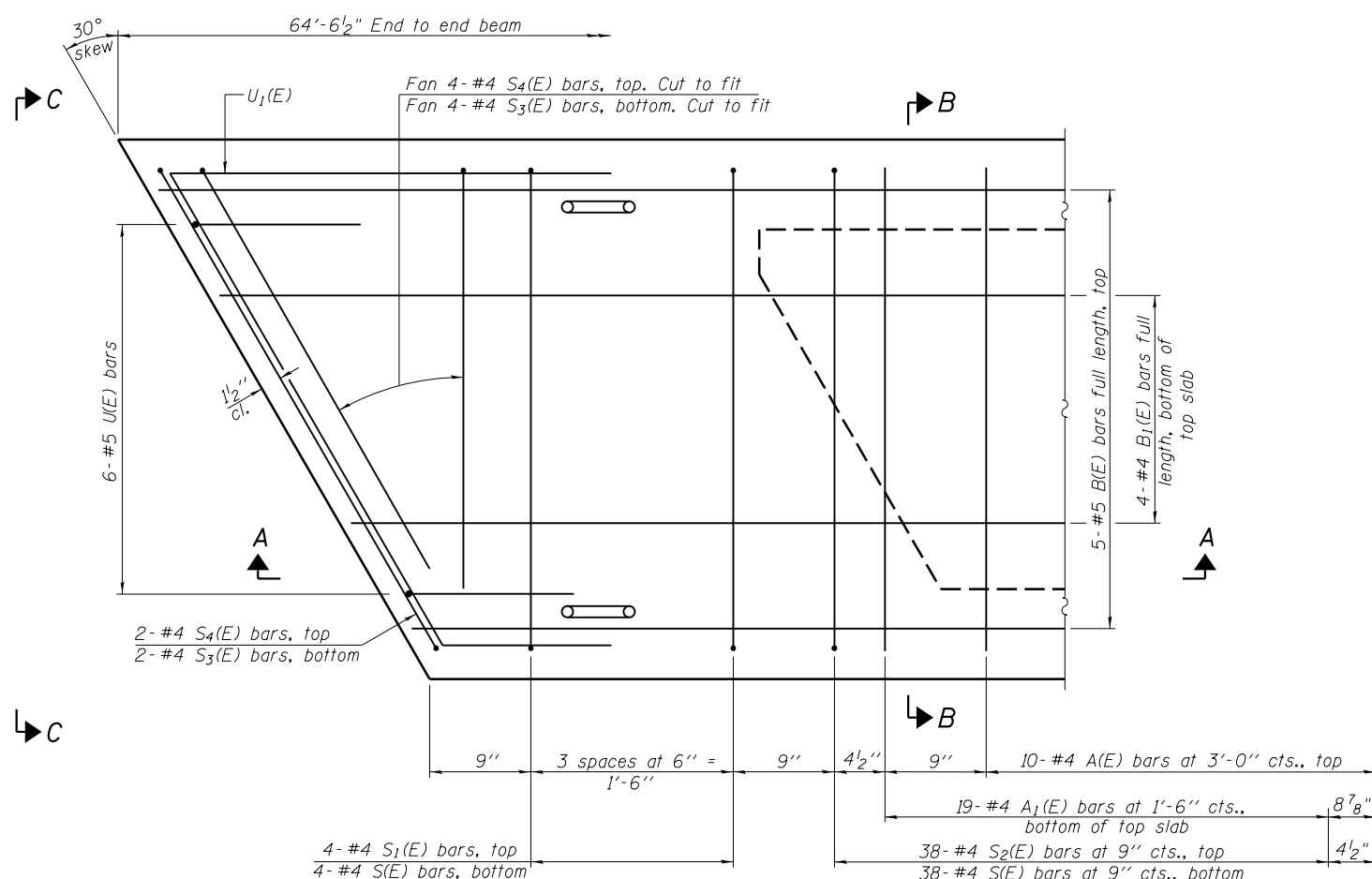
SECTION A-A



SECTION B-B
(Showing dimensions)

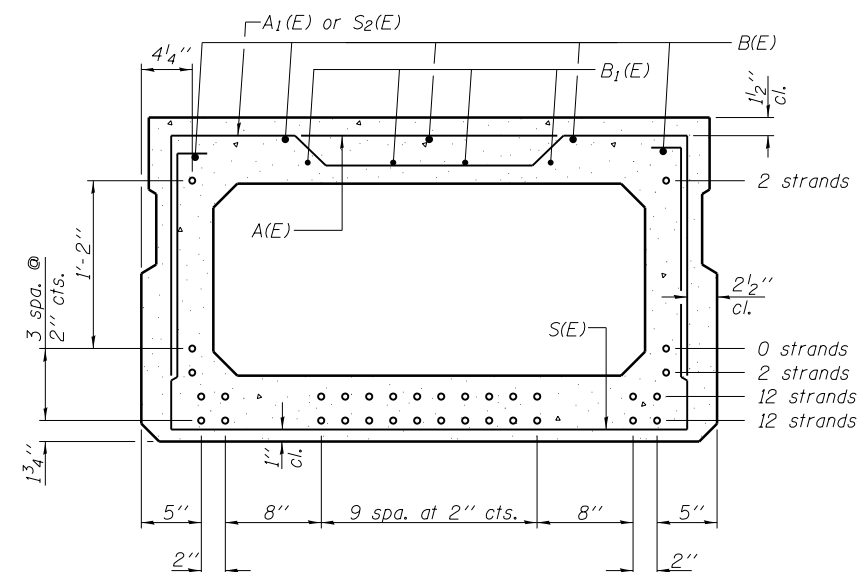


VIEW C-C



PLAN VIEW

Note: Spacing of S(E) and S2(E) bars may be adjusted up to 4" in the immediate area of the transverse tie diaphragms to miss the block outs for the transverse ties.



SECTION B-B

(Showing reinforcement and permissible strand locations)

Note: Place the number of strands specified in each row symmetrically about the centerline of beam in the permissible strand locations shown.

BAR LIST
ONE BEAM ONLY
(For information only)

Bar	No.	Size	Length	Shape
A(E)	19	#4	3'-7"	—
A1(E)	38	#4	3'-10"	—
B(E)	10	#5	33'-5"	—
B1(E)	8	#4	33'-2"	—
S(E)	84	#4	8'-5"	U
S1(E)	8	#4	6'-11"	U
S2(E)	76	#4	7'-2"	U
S3(E)	12	#4	5'-6"	J
S4(E)	12	#4	5'-3"	J
U(E)	12	#5	4'-6"	U
U1(E)	4	#4	8'-7"	U

Note: See sheet 5 of 6 for additional details and Bill of Material.

MINIMUM BAR LAP

#4 bar = 1'-11"
#5 bar = 2'-6"

PD-2748-R

06-01-16

CEC
Cummins
Engineering
Corporation
Civil and Structural Engineering

JOB = 2399.1
FILE = 057-0195-0570611-01-Beam.dgn
DATE = 10/17/2016

DESIGNED - AAN
CHECKED - MDC
DRAWN - SJS
CHECKED - MDC

REVISED -
REVISED -
REVISED -
REVISED -

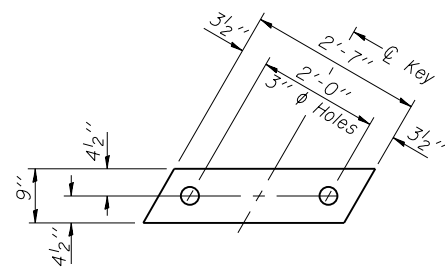
STATE OF ILLINOIS
DEPARTMENT OF TRANSPORTATION

27" x 48" PPC DECK BEAM
STRUCTURE NO. 057-0195

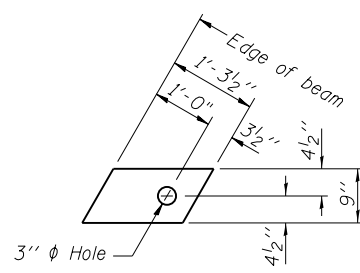
SHEET NO. 4 OF 6 SHEETS

F.A.S. RTE.	SECTION	COUNTY	TOTAL SHEETS	SHEET NO.
493	25-B-NRS-BR-1	MCLEAN	23	19
				CONTRACT NO. 70611

ILLINOIS FED. AID PROJECT



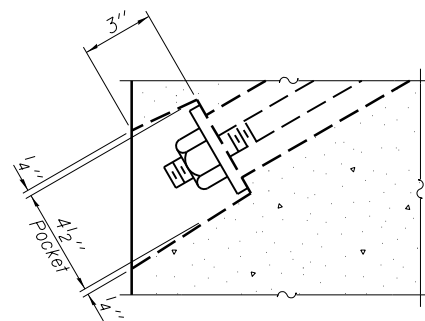
FABRIC BEARING PAD
(Interior - 12 required)



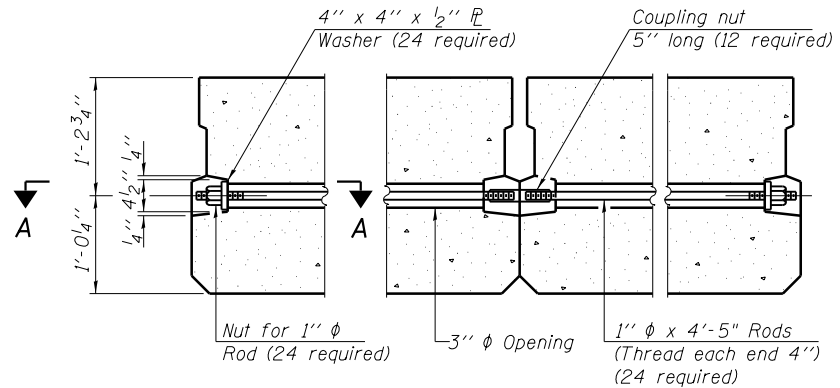
FABRIC BEARING PAD
(Exterior - 4 required)

FIXED

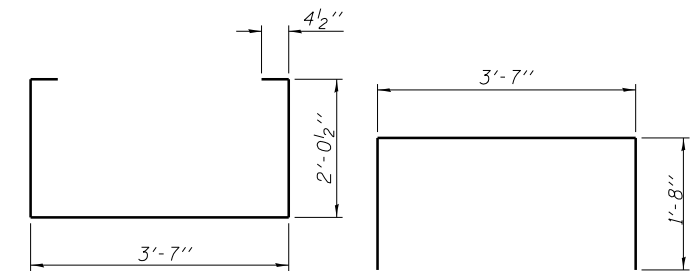
Notes:
All bearing pads shall be 1" thick.



SECTION A-A

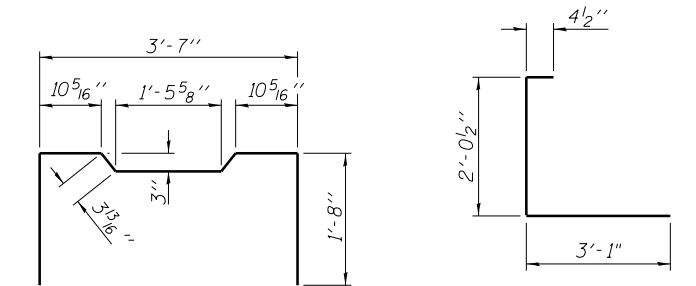


TYPICAL TRANSVERSE TIE ASSEMBLY



BAR S(E)

BAR S1(E)

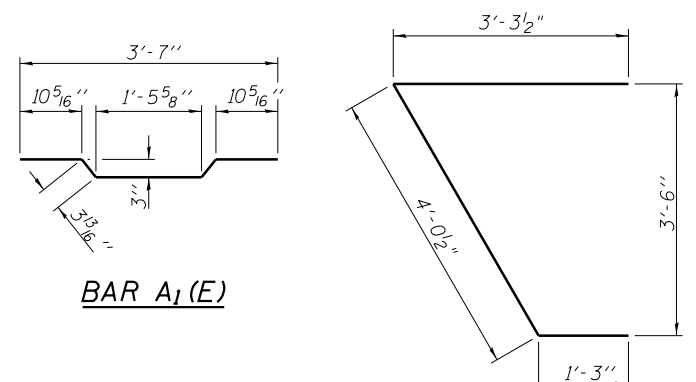


BAR S2(E)

BAR S3(E)

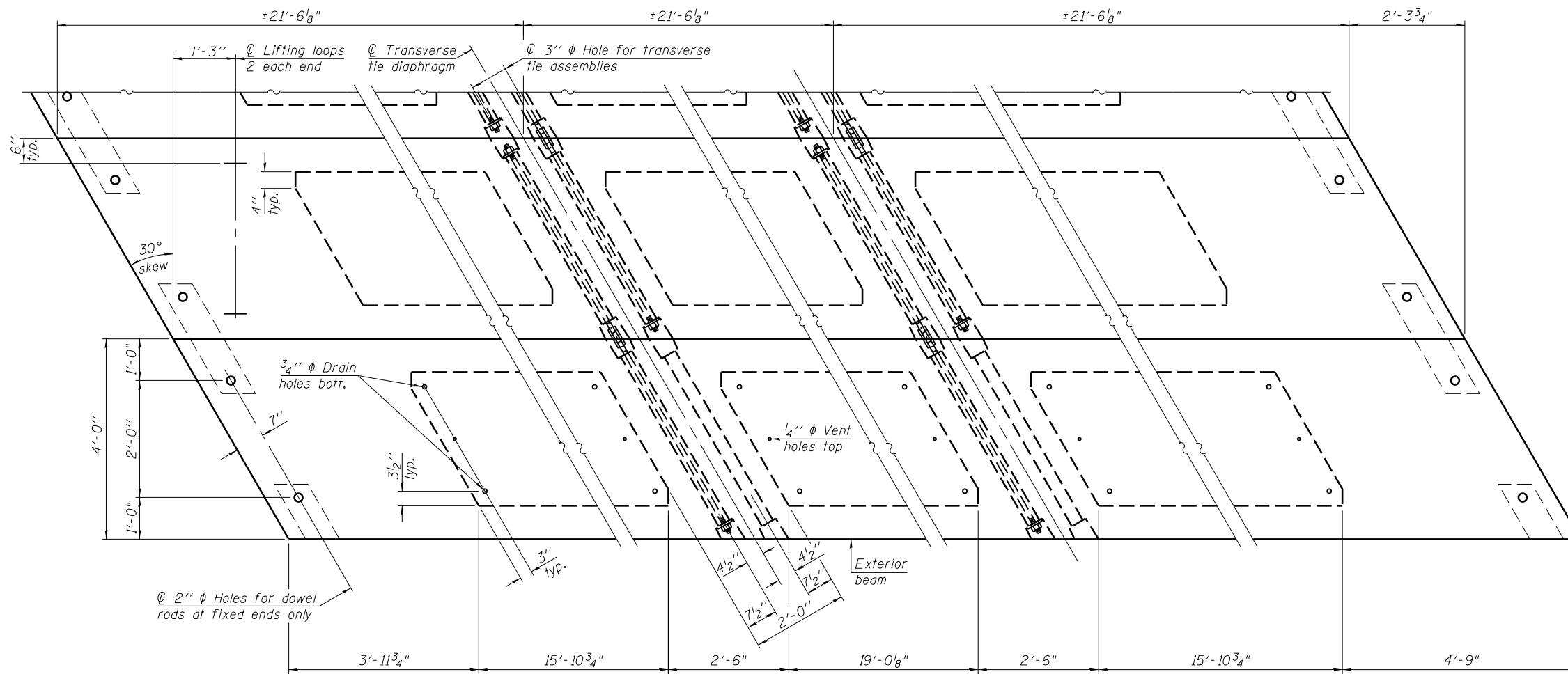


BAR S4(E)



BAR U(E)

BAR U1(E)

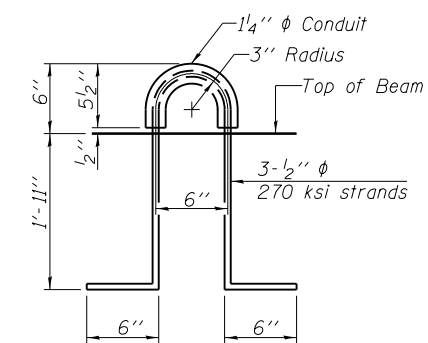


PLAN VIEW

NOTES

Prestressing steel shall be uncoated high strength, low relaxation 7-wire strand, Grade 270. The nominal diameter shall be 1/2" and the nominal cross-sectional area shall be 0.153 sq. in.
The 1" rods in the transverse tie assembly shall be tightened to a snug fit and the threads set. Pockets on exterior faces of bridge shall be filled with grout after transverse tie assembly is in place.
Two 3/8" fabric adjusting shims of the dimensions of the exterior bearing pad shall be provided for each bearing pad location.
A minimum 2 1/2" diameter lifting pin shall be used to engage the lifting loops during handling.
Corrosion Inhibitor, per Article 1020.05(b)(10) and 1021.07 of the Standard Specifications, shall be used in the concrete for precast prestressed concrete deck beams.
Compressive strength of prestressed concrete, f'c, shall be 6000 psi.
Compressive strength of prestressed concrete at release, f'ci, shall be 5000 psi.
Bridge post anchors shall be cast into the outside beams. See Sheet 2 of 6 for rail post spacing and sheet 3 of 6 for railing details. Cost included with Precast Prestressed Concrete Deck Beams (27" depth).

Note: Connect beams in pairs with the transverse tie configuration shown.



LIFTING LOOP DETAIL

BILL OF MATERIAL

Precast Prestressed Conc. Deck Bms. (27" depth)	Sq. Ft.	1,808
---	---------	-------

PD-2748-RD 06-01-16

CEC
Civil and Structural Engineering

Job = 2399.1
FILE = 057-0195-0570611-01-Beam.dgn
DATE = 10/17/2016

DESIGNED - AAN
CHECKED - MDC
DRAWN - SJS
CHECKED - MDC

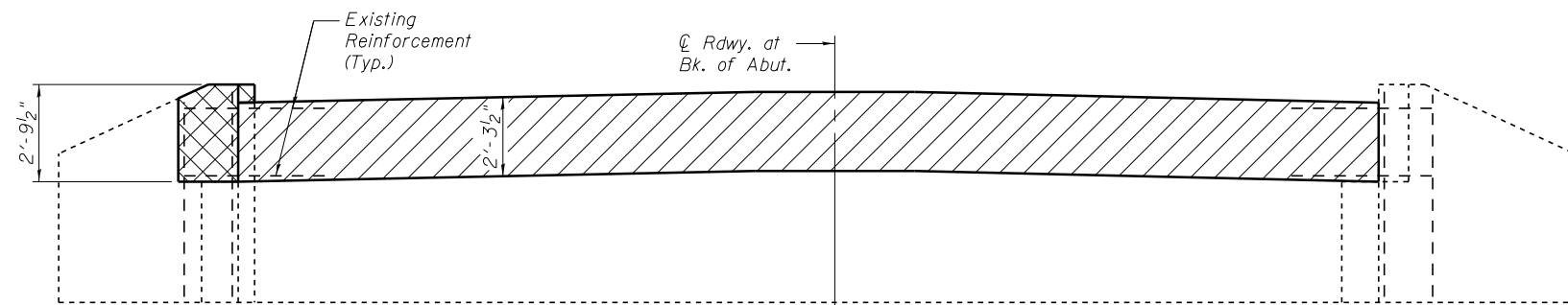
REVISED -
REVISED -
REVISED -
REVISED -

STATE OF ILLINOIS
DEPARTMENT OF TRANSPORTATION

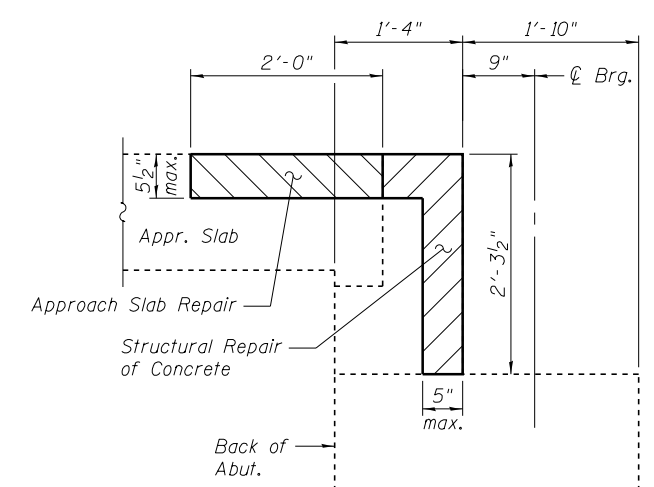
27" x 48" PPC DECK BEAM DETAILS
STRUCTURE NO. 057-0195

SHEET NO. 5 OF 6 SHEETS

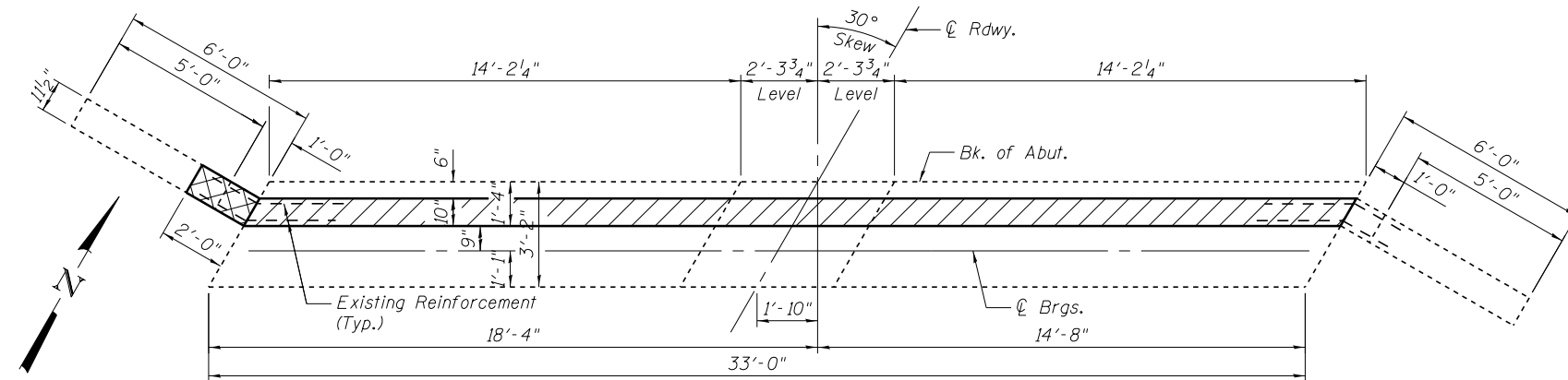
F.A.S. RTE. 493	SECTION 25-B-NRS-BR-1	COUNTY MCLEAN	TOTAL SHEETS 23	SHEET NO. 20
CONTRACT NO. 70611			ILLINOIS FED. AID PROJECT	



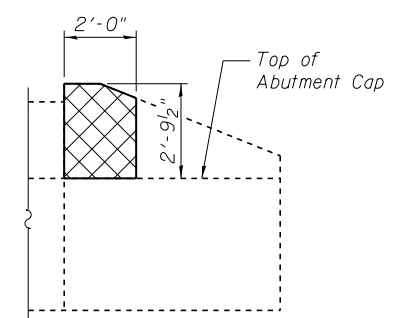
ELEVATION
(North Abutment)



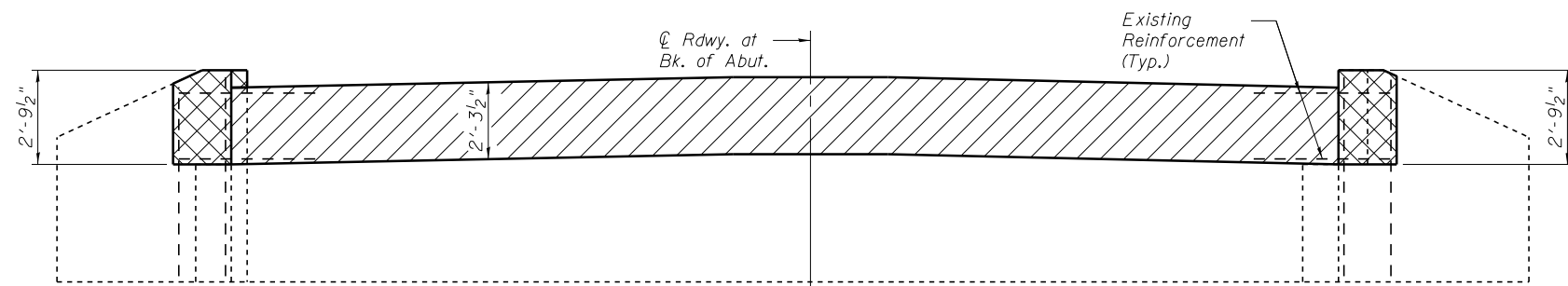
SECTION THRU EXISTING ABUTMENT
(Horiz. dim. @ Rt. L's)



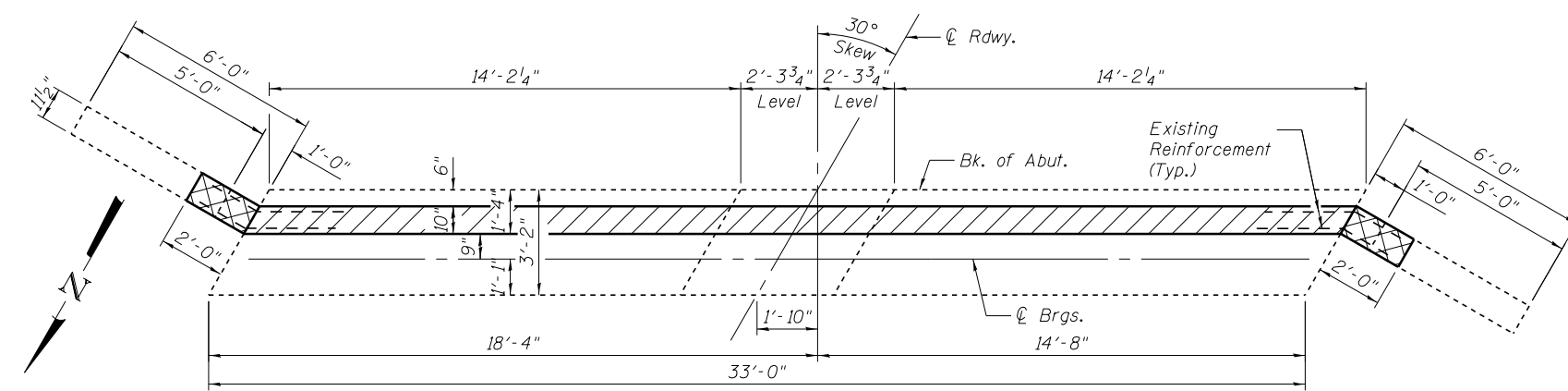
PLAN
(North Abutment)



WING WALL ELEVATION
(Typical at NW, SW and SE Wings)



ELEVATION
(South Abutment)



PLAN
(South Abutment)

LEGEND

- Structural Repair of Concrete (Depth Equal to or Less Than 5")
- Concrete Removal

TWO ABUTMENTS BILL OF MATERIAL

ITEM	UNIT	QUANTITY
Structural Repair of Concrete (Depth Equal to or Less Than 5")	Sq. Ft.	206
Concrete Removal	Cu. Yd.	0.6
Concrete Structures	Cu. Yd.	0.6
Approach Slab Repair (Partial Depth)	Sq. Yd.	15

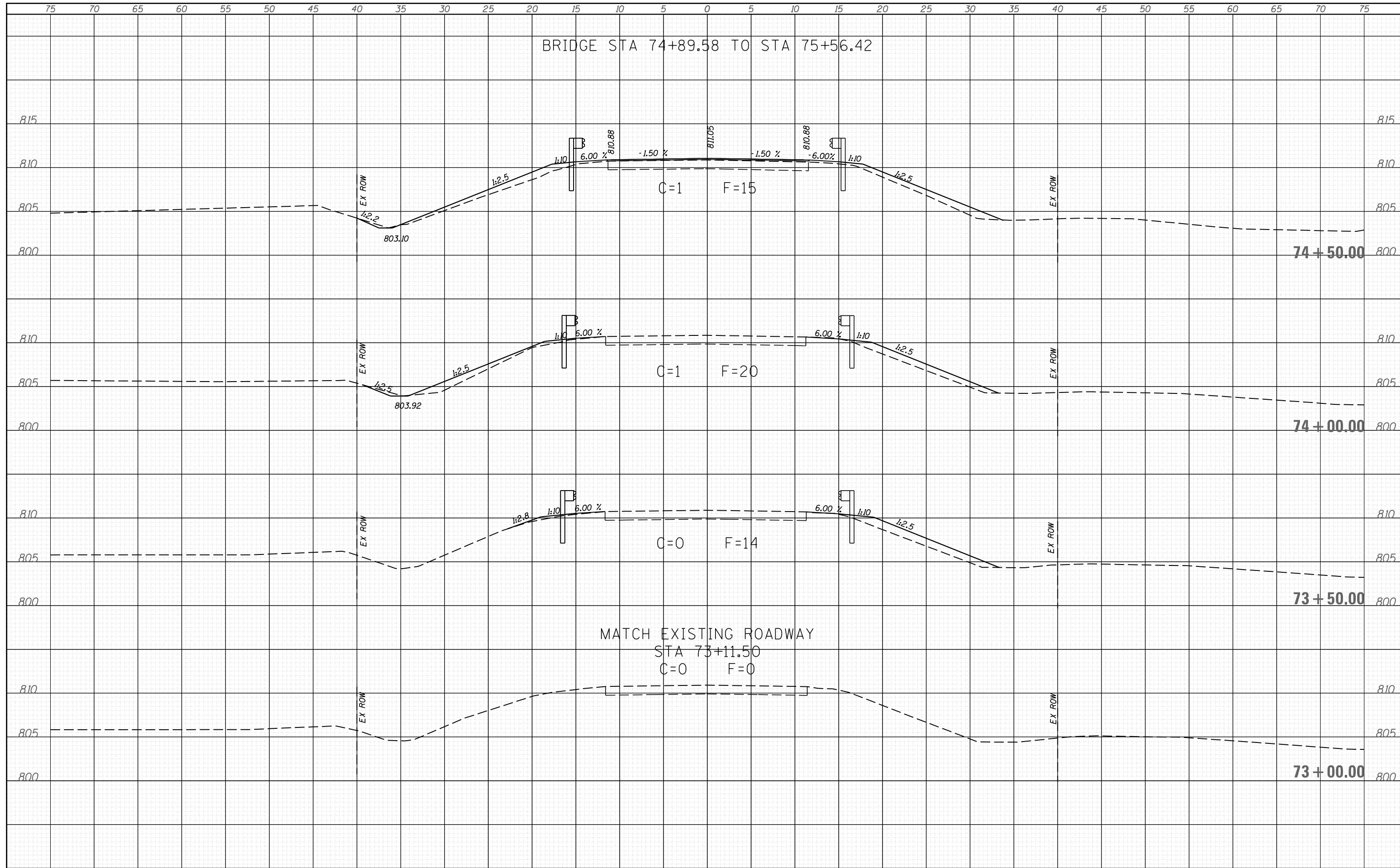
Note:
The quantities for Structural Repair of Concrete and Approach Slab Repair are estimated. This work will be performed as necessary and at the discretion of the Engineer after the beams have been removed and the condition of the back walls and ends of the approach slabs have been inspected.

Existing reinforcement extending into removal areas shall be cleaned and incorporated into new construction. Cost included with Concrete Removal.

DATE	
BY	
SURVEYED	
PLOTTED	
TEMPLATE	
AREAS	
CHECKED	
NO.	

DATE	
BY	
SURVEYED	
PLOTTED	
TEMPLATE	
AREAS	
CHECKED	
NO.	

BRIDGE STA 74+89.58 TO STA 75+56.42



MATCH EXISTING ROADWAY
STA 73+11.50
C=0 F=0



JOB = 2399.1
FILE NAME = D570622-sht-xsec.dgn
PLOT SCALE = 10.0000' / in.
PLOT DATE = 10/17/2016

DESIGNED -
DRAWN -
CHECKED -
DATE -

REVISED -
REVISED -
REVISED -
REVISED -

STATE OF ILLINOIS
DEPARTMENT OF TRANSPORTATION

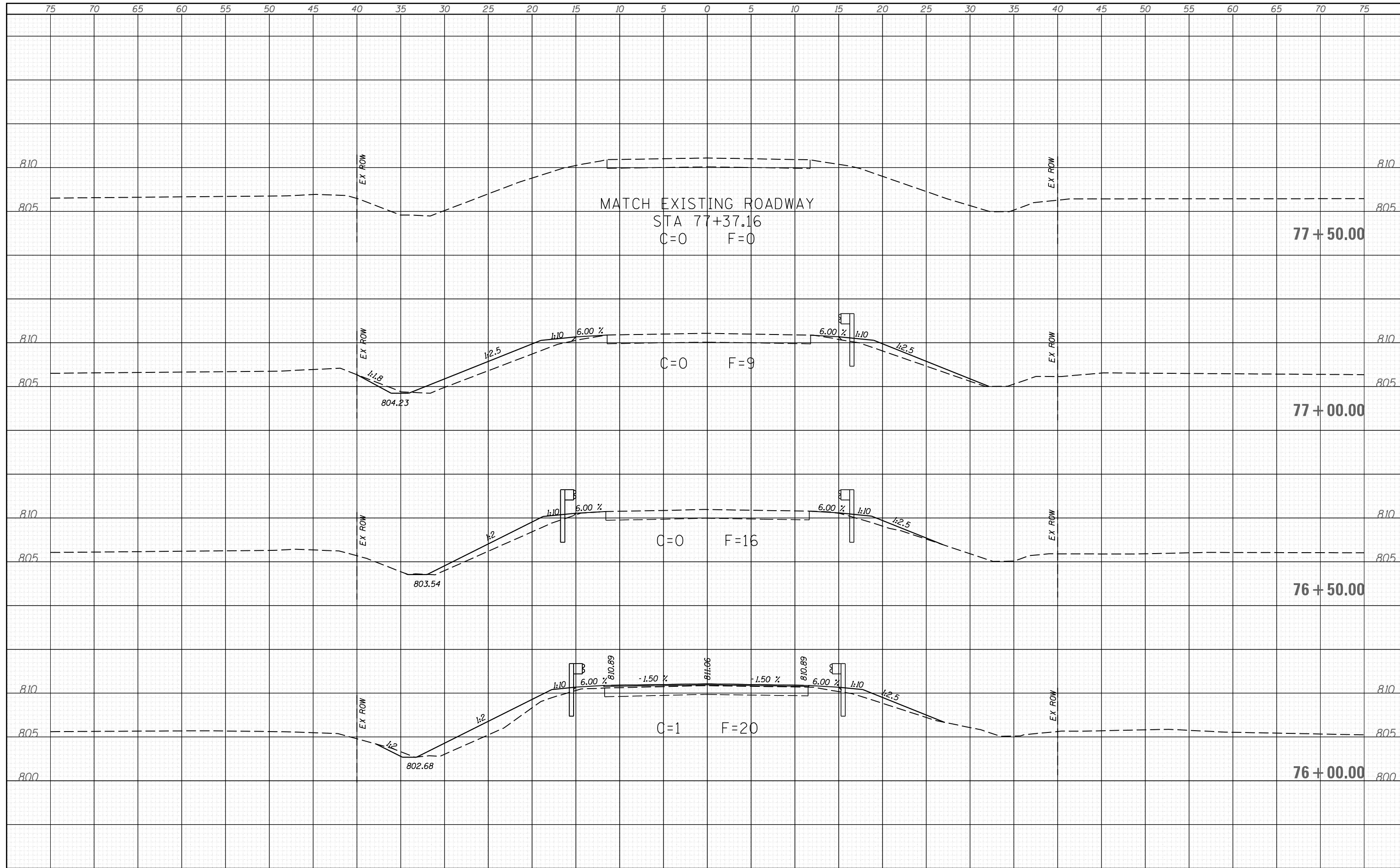
CROSS SECTIONS

SCALE: SHEET NO. OF SHEETS STA. 73+00.00 TO STA. 74+50.00

F.A.S. RTE.	SECTION	COUNTY	TOTAL SHEETS	SHEET NO.
493	25-B-NRS-BR-1	MCLEAN	23	22
CONTRACT NO. 70611				
FED. ROAD DIST. NO. ILLINOIS FED. AID PROJECT				

DATE	
BY	
SURVEYED	
PLOTTED	
TEMPLATE	
AREAS CHECKED	
FINAL SURVEY NOTE BOOK NO.	

DATE	
BY	
SURVEYED	
PLOTTED	
TEMPLATE	
AREAS CHECKED	
ORIGINAL SURVEY NOTE BOOK NO.	



CEC Cummins Engineering Corporation
Civil and Structural Engineering

JOB = 2399.1
FILE NAME = D570622-sht-xsec.dgn
PLOT SCALE = 10.0000' / in.
PLOT DATE = 10/17/2016

DESIGNED	-	REVISED	-
DRAWN	-	REVISED	-
CHECKED	-	REVISED	-
DATE	-	REVISED	-

**STATE OF ILLINOIS
DEPARTMENT OF TRANSPORTATION**

CROSS SECTIONS

SCALE: SHEET NO. OF SHEETS STA. 76+00.00 TO STA. 77+50.00

F.A.S. RTE.	SECTION	COUNTY	TOTAL SHEETS	SHEET NO.
493	25-B-NRS-BR-1	MCLEAN	23	23
FED. ROAD DIST. NO. ILLINOIS FED. AID PROJECT			CONTRACT NO. 70611	