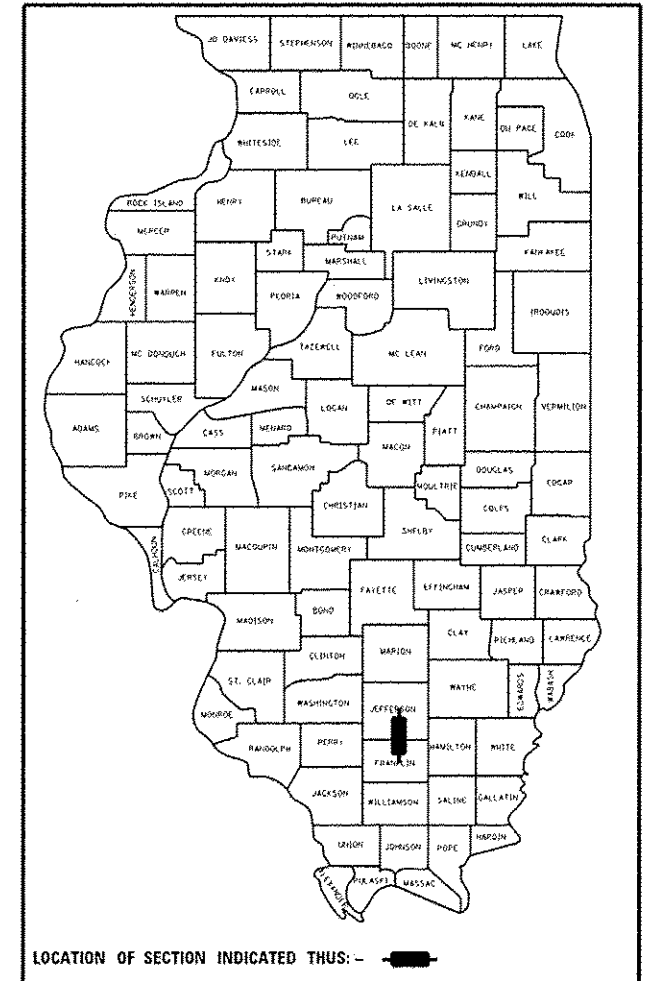


01-20-2017 LETTING ITEM 053

STATE OF ILLINOIS
DEPARTMENT OF TRANSPORTATION
OFFICE OF HIGHWAYS PROJECT IMPLEMENTATION

P.A. RTE.	SECTION	COUNTY	TOTAL SHEETS	SHEET NO.
*	**	***	22	1
ILLINOIS CONTRACT NO. 78538				

- * VARIOUS
- ** D9 GUARDRAIL END SECT FY17-1
- *** FRANKLIN & JEFFERSON
D-99-040-16



STATE OF ILLINOIS
DEPARTMENT OF TRANSPORTATION
OFFICE OF HIGHWAYS PROJECT IMPLEMENTATION

SUBMITTED Oct 18 2016
Jeffrey D. Keen
REGION FIVE ENGINEER

Dec 9 2016
Margaret M. Addis, P.E.
actg. ENGINEER OF DESIGN AND ENVIRONMENT

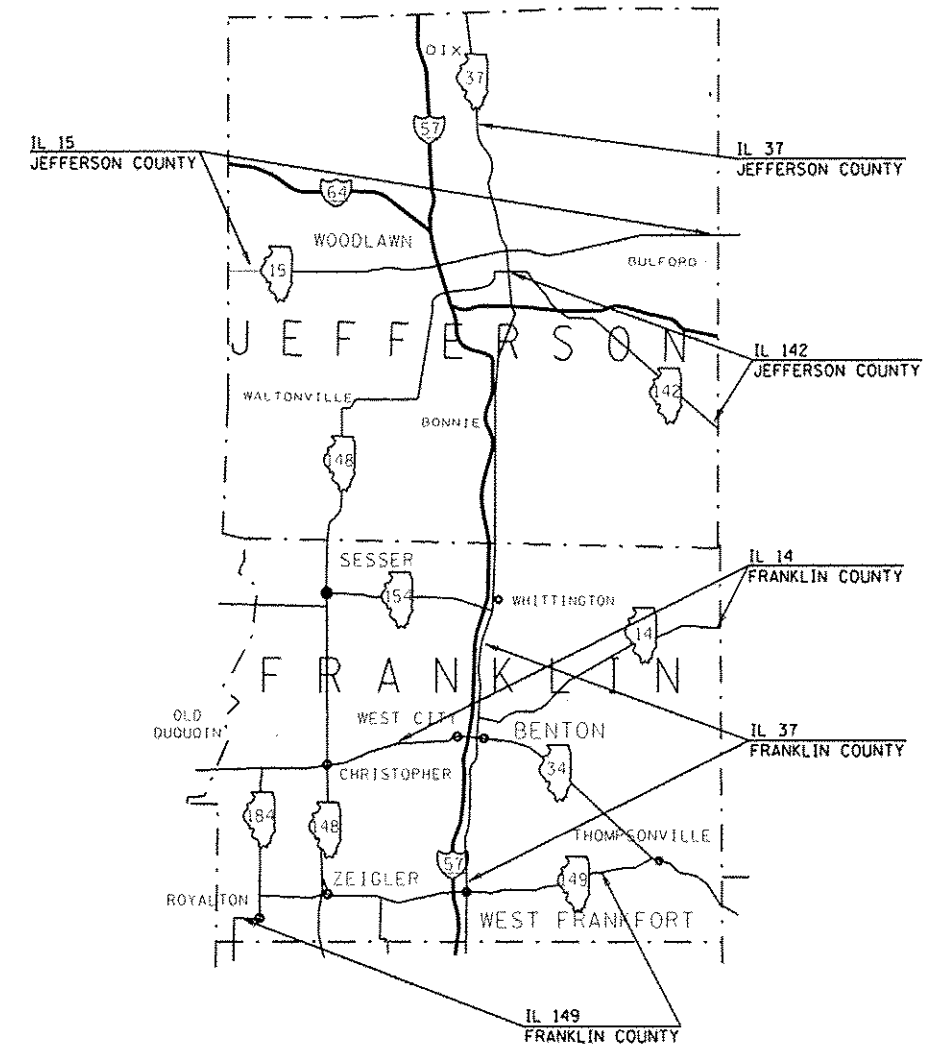
Dec 9 2016
Kevin [Signature]
DIRECTOR OF PROGRAM DEVELOPMENT

PRINTED BY THE AUTHORITY OF THE STATE OF ILLINOIS

PROPOSED HIGHWAY PLANS

VARIOUS ROUTES
D9 GUARDRAIL END SECT FY17-1
PROJECT ACHSIP-000V(089)
GUARDRAIL REMOVAL AND REPLACEMENT
FRANKLIN & JEFFERSON COUNTY

C-99-040-16



FOR INDEX OF SHEETS, SEE SHEET NO. 3
FOR SUMMARY OF QUANTITIES, SEE SHEET NO. 4

J.U.L.I.E.
JOINT UTILITY LOCATION INFORMATION FOR EXCAVATION
1-800-892-0123
OR 811

PROJECT ENGINEER LISA PRITCHETT
PROJECT DESIGNER CHARLES STEIN

CONTRACT NO. 78538

Prepared By:

[Signature]
DISTRICT STUDIES & PLANS ENGINEER

Examined By:

[Signature]
DISTRICT LAND ACQUISITION ENGINEER

Examined By:

[Signature]
DISTRICT PROGRAM DEVELOPMENT ENGINEER

Examined By:

[Signature]
DISTRICT OPERATIONS ENGINEER

Examined By:

[Signature]
DISTRICT PROJECT IMPLEMENTATION ENGINEER

Examined By:

[Signature]
DISTRICT CONSTRUCTION ENGINEER

Examined By:

[Signature]
DISTRICT MATERIALS ENGINEER

• VARIOUS
•• D9 GUARDRAIL END SECT FY17-1
••• FRANKLIN & JEFFERSON

FILE NAME *	USER NAME *	DESIGNED -	REVISED -
PROJECT: 004680INTEG, Illinois.gov\PI\1001\G...	pritchettll		
MODEL NAME *	PROJECT: 004680INTEG, Illinois.gov\PI\1001\G...	CHECKED -	REVISED -
	PLOT SCALE: 1/2"=100'	DATE -	REVISED -
	PLOT DATE: 10/14/2016		

STATE OF ILLINOIS
DEPARTMENT OF TRANSPORTATION

SIGNATURE SHEET

SCALE: SHEET OF SHEETS STA. TO STA.

F.A. RTE.	SECTION	COUNTY	TOTAL SHEETS	SHEET NO.
	**	***	22	2
			CONTRACT NO. 7853B	
ILLINOIS FED. AID PROJECT				

INDEX OF SHEETS

SHEET NO.	DESCRIPTION
1	COVER SHEET
2	SIGNATURE SHEET
3	INDEX OF SHEETS, STANDARDS, COMMITMENTS, GENERAL NOTES
4 - 7	SUMMARY OF QUANTITIES
8 - 9	EARTHWORK SCHEDULE
10 - 16	GUARDRAIL SCHEDULE
17	PIPE SCHEDULE
18 - 19	SEEDING SCHEDULE
20	STRUCTURE MAPS
21	DETAIL OF STEEL RAILING TYPE 2399
22	DETAIL 9-79, DETAIL 9-16, DETAIL CONCRETE REMOVAL

GENERAL NOTES

IF SO DIRECTED BY THE ENGINEER, DITCHES ADJACENT TO EMBANKMENTS SHALL BE CONSTRUCTED PRIOR TO STARTING THE CONSTRUCTION OF THE EMBANKMENT FILL.
EARTHWORK COMPACTION SHALL BE TO THE SATISFACTION OF THE ENGINEER.

STANDARDS

000001-06	STANDARD SYMBOLS, ABBREVIATIONS AND PATTERNS
515001-03	NAME PLATE FOR BRIDGES
542301-03	PRECAST REINFORCED CONCRETE FLARED END SECTION
542401-02	METAL END SECTION FOR PIPE CULVERTS
630001-11	STEEL PLATE BEAM GUARDRAIL
630101-10	STRONG POST GUARDRAIL ATTACHED TO CULVERT
630106-02	LONG-SPAN GUARDRAIL OVER CULVERT
630301-07	SHOULDER WIDENING FOR TYPE 1 (SPECIAL) GUARDRAIL TERMINALS
631011-10	TRAFFIC BARRIER TERMINAL, TYPE 2
631031-15	TRAFFIC BARRIER TERMINAL, TYPE 6
701006-05	OFF-RD OPERATIONS, 2L, 2W, 15' TO 24" FROM PAVEMENT EDGE
701011-04	OFF-RD MOVING OPERATIONS, 2L, 2W, DAY ONLY
701101-05	OFF-RD OPERATIONS MULTILANE, 15' TO 24" FROM PAVEMENT EDGE
701201-04	LANE CLOSURE, 2L, 2W, DAY ONLY, FOR SPEEDS \geq 45 MPH
701206-03	LANE CLOSURE, 2L, 2W, NIGHT ONLY, FOR SPEEDS \geq 45 MPH
701301-04	LANE CLOSURE, 2L, 2W, SHORT TIME OPERATIONS
701421-08	LANE CLOSURE, MULTILANE, DAY OPERATIONS ONLY, FOR SPEEDS \geq 45 MPH TO 55MPH
701602-08	URBAN LANE CLOSURE, MULTILANE, 2W WITH BIDIRECTIONAL LEFT TURN LANE
701901-06	TRAFFIC CONTROL DEVICES
725001-01	OBJECT AND TERMINAL MARKERS
782006	GUARDRAIL AND BARRIER WALL REFLECTOR MOUNTING DETAILS

• VARIOUS
 ** D9 GUARDRAIL END SECT FY17-1
 *** FRANKLIN & JEFFERSON

FILE NAME	USER NAME	DESIGNED	REVISED	STATE OF ILLINOIS DEPARTMENT OF TRANSPORTATION		INDEX OF SHEETS, STANDARDS, GENERAL NOTES		F.A. RTE.	SECTION	COUNTY	TOTAL SHEETS	SHEET NO.			
Default	pritchett1	-	-					*	**	***	22	3			
		CHECKED	REVISED									CONTRACT NO. 78538			
		DATE	REVISED									ILLINOIS FED. AID PROJECT			

SUMMARY OF QUANTITIES

CODE NUMBER	ITEM DESCRIPTION	UNIT	TOTAL QUANTITY	COUNTY:	FRANKLIN	JEFFERSON
				ROUTE:	VARIOUS	VARIOUS
				FUNDING:	90% HSIP, 10% STATE	90% HSIP, 10% STATE
				LOCATION:	RURAL	RURAL
					ROADWAY	ROADWAY
					0021	0021
20200100	EARTH EXCAVATION	CU YD	372		372	0
20400800	FURNISHED EXCAVATION	CU YD	1,950		1,950	0
25000200	SEEDING, CLASS 2	ACRE	1.25		1.25	0
25000350	SEEDING, CLASS 7	ACRE	1.25		1.25	0
25000400	NITROGEN FERTILIZER NUTRIENT	POUND	224		224	0
25000500	PHOSPHORUS FERTILIZER NUTRIENT	POUND	112		112	0
25000600	POTASSIUM FERTILIZER NUTRIENT	POUND	112		112	0
25000700	AGRICULTURAL GROUND LIMESTONE	TON	2.5		2.5	0
25100115	MULCH, METHOD 2	ACRE	1.25		1.25	0
28000250	TEMPORARY EROSION CONTROL SEEDING	POUND	249		249	0
28000305	TEMPORARY DITCH CHECKS	FOOT	140		140	0
28000400	PERIMETER EROSION BARRIER	FOOT	2,856		2,856	0

- VARIOUS
- D9 GUARDRAIL END SECT FY17-1
- FRANKLIN & JEFFERSON

12

SUMMARY OF QUANTITIES - CONT

CODE NUMBER	ITEM DESCRIPTION	UNIT	TOTAL QUANTITY	COUNTY:	FRANKLIN	JEFFERSON
				ROUTE:	VARIOUS	VARIOUS
				FUNDING:	90% HSIP, 10% STATE	90% HSIP, 10% STATE
				LOCATION:	RURAL	RURAL
				ROADWAY	ROADWAY	ROADWAY
				0021	0021	0021
28000500	INLET AND PIPE PROTECTION	EACH	7		7	0
50102400	CONCRETE REMOVAL	CU YD	13		13	0
50105220	PIPE CULVERT REMOVAL	FOOT	6		6	0
50900200	STEEL RAILING, TYPE 2399	FOOT	554		554	0
51500100	NAME PLATES	EACH	6		6	0
542A0235	PIPE CULVERTS, CLASS A, TYPE 1 30"	FOOT	60		60	0
542D0229	PIPE CULVERTS, CLASS D, TYPE 1 24"	FOOT	588		588	0
54213675	PRECAST REINFORCED CONCRETE FLARED END SECTIONS 30"	EACH	1		1	0
54215559	METAL END SECTIONS 24"	EACH	14		14	0
54248510	CONCRETE COLLAR	CU YD	0.56		0.56	0
63000003	STEEL PLATE BEAM GUARDRAIL, TYPE A, 9 FOOT POSTS	FOOT	1,156		1,106	50
63000030	STRONG POST GUARDRAIL, ATTACHED TO CULVERT	FOOT	269		269	0

- VARIOUS
- D9 GUARDRAIL END SECT FY17-1
- FRANKLIN & JEFFERSON

12

SUMMARY OF QUANTITIES - CONT

COUNTY:	FRANKLIN	JEFFERSON
ROUTE:	VARIOUS	VARIOUS
FUNDING:	90% HSIP, 10% STATE	90% HSIP, 10% STATE
LOCATION:	RURAL	RURAL
	ROADWAY	ROADWAY
	0021	0021

CODE NUMBER	ITEM DESCRIPTION	UNIT	TOTAL QUANTITY	FRANKLIN ROADWAY 0021	JEFFERSON ROADWAY 0021
63000350	LONG-SPAN GUARDRAIL OVER CULVERT, 12 FT 6 IN SPAN	FOOT	163	163	0
63000360	LONG-SPAN GUARDRAIL OVER CULVERT, 18 FT 9 IN SPAN	FOOT	169	169	0
63000370	LONG-SPAN GUARDRAIL OVER CULVERT, 25 FT SPAN	FOOT	700	700	0
63100045	TRAFFIC BARRIER TERMINAL, TYPE 2	EACH	3	1	2
63100085	TRAFFIC BARRIER TERMINAL, TYPE 6	EACH	29	29	0
63100167	TRAFFIC BARRIER TERMINAL, TYPE 1 (SPECIAL) TANGENT	EACH	135	73	62
63200310	GUARDRAIL REMOVAL	FOOT	8,454	5,140	3,314
67100100	MOBILIZATION	LSUM	1	0.5	0.5
70100310	TRAFFIC CONTROL AND PROTECTION, STANDARD 701421	LSUM	1	0.5	0.5
70100450	TRAFFIC CONTROL AND PROTECTION, STANDARD 701201	LSUM	1	0.5	0.5
70100455	TRAFFIC CONTROL AND PROTECTION, STANDARD 701206	LSUM	1	1	0
70102632	TRAFFIC CONTROL AND PROTECTION, STANDARD 701602	LSUM	1	0.5	0.5

- VARIOUS
- D9 GUARDRAIL END SECT FY17-1
- FRANKLIN & JEFFERSON

FILE NAME *	USER NAME * pprichett1	DESIGNED -	REVISED -
p:\11\BBAEBID\INTEG-illinois.gov\PIW\DOT\Documents\DOT OFFICES\District 9\Projects\78538\DRAWING\CAD\Sheets\Sheet\over_seq_index.dwg		DRAWN -	REVISED -
Default	PLDT SCALE * 100.0000' / 1" =	CHECKED -	REVISED -
	PLOT DATE * 10/19/2016	DATE -	REVISED -

**STATE OF ILLINOIS
DEPARTMENT OF TRANSPORTATION**

SUMMARY OF QUANTITIES

SCALE: SHEET OF SHEETS STA. TO STA.

F.A. RTE.	SECTION	COUNTY	TOTAL SHEETS	SHEET NO.
*	**	***	22	6
			CONTRACT NO. 78538	
ILLINOIS FED. AID PROJECT				

8/22/2016

SUMMARY OF QUANTITIES - CONT

COUNTY:	FRANKLIN	JEFFERSON
ROUTE:	VARIOUS	VARIOUS
FUNDING:	90% HSIP, 10% STATE	90% HSIP, 10% STATE
LOCATION:	RURAL	RURAL
	ROADWAY	ROADWAY
	0021	0021

CODE NUMBER	ITEM DESCRIPTION	UNIT	TOTAL QUANTITY	FRANKLIN ROADWAY	JEFFERSON ROADWAY
70200100	NIGHTTIME WORK ZONE LIGHTING	L SUM	1	1	
72501000	TERMINAL MARKER - DIRECT APPLIED	EACH	135	73	62
78200005	GUARDRAIL REFLECTORS, TYPE A	EACH	136	132	4
X6330900	VERTICAL ADJUSTMENT OF GUARDRAIL	FOOT	2,714	1,264	1,450

3

• VARIOUS
 ** D9 GUARDRAIL END SECT FY17-1
 *** FRANKLIN & JEFFERSON

EARTHWORK SCHEDULE

LOCATION STA TO STA	EARTH EXCAVATION	FOR INFORMATION ONLY				FURNISHED EXCAVATION	COMMENTS
		AVERAGE SHRINKAGE FACTOR	EARTH EXCAVATION (ADJUSTED)	EMBANKMENT	EARTHWORK BALANCE		
		CU YD	%	CU YD	CU YD		
IL 14 (FRANKLIN COUNTY)							
SN 028-7049							
RT STA 20+69 TO STA 21+29.	0.0	75.0	0.0	34.5	-34.5	34.5	4:1 FORESLOPE
SN 028-0024							
LT STA 206+64. TO STA 207+48.	0.0	75.0	0.0	52.0	-52.0	52.0	2:1 FORESLOPE
RT STA 206+64. TO STA 207+48.	0.0	75.0	0.0	61.4	-61.4	61.4	
LT STA 209+53. TO STA 210+37.	0.0	75.0	0.0	233.8	-233.8	233.8	
RT STA 209+53. TO STA 210+37.	0.0	75.0	0.0	45.0	-45.0	45.0	
SN 028-0025							
RT STA 235+77. TO STA 236+61.	0.0	75.0	0.0	38.0	-38.0	38.0	4:1 FORESLOPE
LT STA 236+35. TO STA 237+19.	0.0	75.0	0.0	19.4	-19.4	19.4	
RT STA 238+70. TO STA 239+54.	0.0	75.0	0.0	22.2	-22.2	22.2	2:1 FORESLOPE
LT STA 241+50. TO STA 242+34.	0.0	75.0	0.0	17.5	-17.5	17.5	
SN 028-0026							
RT STA 281+82. TO STA 282+66.	126.3	75.0	94.7	40.1	54.6	0.0	2:1 FORESLOPE, 4' DITCH BOTTOM, 2:1 BACKSLOPE
RT STA 284+52. TO STA 285+36.	0.0	75.0	0.0	45.2	-45.2	45.2	
LT STA 285+06. TO STA 285+90.	0.0	75.0	0.0	62.4	-62.4	7.8	
SN 028-7054							
LT STA 325+47. TO STA 326+30.	0.0	75.0	0.0	41.0	-41.0	28.6	2:1 FORESLOPE
LT STA 327+93. TO STA 328+77.	25.3	75.0	19.0	6.6	12.4	0.0	4:1 FORESLOPE, 4' DITCH BOTTOM, 3:1 BACKSLOPE
SN 028-0028							
RT STA 439+19. TO STA 440+03.	0.0	75.0	0.0	46.3	-46.3	46.3	2:1 FORESLOPE
LT STA 439+61. TO STA 440+45.	0.0	75.0	0.0	28.3	-28.3	28.3	
RT STA 442+07. TO STA 442+91.	0.0	75.0	0.0	34.8	-34.8	34.8	
LT STA 442+36. TO STA 443+20.	0.0	75.0	0.0	43.4	-43.4	43.4	
SN 028-0029							
LT STA 447+41. TO STA 448+25.	0.0	75.0	0.0	107.1	-107.1	107.1	4:1 FORESLOPE
RT STA 447+41. TO STA 448+25.	0.0	75.0	0.0	106.0	-106.0	106.0	
LT STA 450+53. TO STA 451+37.	0.0	75.0	0.0	102.5	-102.5	102.5	
RT STA 450+53. TO STA 451+37.	0.0	75.0	0.0	181.0	-181.0	181.0	
SUB-TOTAL	151.6					1,254.8	

- VARIOUS
- D9 GUARDRAIL END SECT FY17-1
- FRANKLIN & JEFFERSON

EARTHWORK SCHEDULE

LOCATION STA TO STA	EARTH EXCAVATION	FOR INFORMATION ONLY				FURNISHED EXCAVATION	COMMENTS
		AVERAGE SHRINKAGE FACTOR	EARTH EXCAVATION (ADJUSTED)	EMBANKMENT	EARTHWORK BALANCE		
		CU YD	%	CU YD	CU YD		
IL 14 (FRANKLIN COUNTY)							
SN 028-0030							
RT STA 528+28. TO STA 529+12.	0.0	75.0	0.0	50.1	-50.1	50.1	4:1 FORESLOPE
LT STA 528+50. TO STA 529+34.	0.0	75.0	0.0	44.5	-44.5	44.5	
RT STA 531+16. TO STA 532+00.	0.0	75.0	0.0	69.7	-69.7	69.7	
LT STA 531+26. TO STA 532+10.	0.0	75.0	0.0	50.2	-50.2	50.2	
SN 028-7057							
RT STA 572+79. TO STA 573+63.	0.0	75.0	0.0	55.1	-55.1	55.1	4:1 FORESLOPE
LT STA 575+54. TO STA 576+48.	0.0	75.0	0.0	78.0	-78.0	78.0	
SN 028-7058							
LT STA 594+29. TO STA 595+13.	78.3	75.0	58.7	44.7	14.0	0.0	4:1 FORESLOPE, 4' DITCH BOTTOM, 3:1 BACKSLOPE
RT STA 594+29. TO STA 595+13.	0.0	75.0	0.0	16.6	-16.6	2.6	
LT STA 596+88. TO STA 597+72.	49.2	75.0	36.9	41.4	-4.5	4.5	4:1 FORESLOPE, 4' DITCH BOTTOM, 3:1 BACKSLOPE
RT STA 596+88. TO STA 597+72.	0.0	75.0	0.0	11.1	-11.1	11.1	
SN 028-0031							
LT STA 629+15. TO STA 629+99.	59.6	75.0	44.7	107.5	-62.8	62.8	4:1 FORESLOPE, 4' DITCH BOTTOM, 3:1 BACKSLOPE
RT STA 629+22. TO STA 630+06.	0.0	75.0	0.0	55.6	-55.6	55.6	
LT STA 632+11. TO STA 632+95.	0.0	75.0	0.0	112.2	-112.2	112.2	4:1 FORESLOPE
RT STA 632+17. TO STA 633+01.	0.0	75.0	0.0	82.7	-82.7	82.7	
MACEDONIA RD							
LT STA 650+94. TO STA 651+78.	31.3	75.0	23.5	0.0	23.5	-6.8	3:1 BACKSLOPE
LT STA 653+46. TO STA 654+30.	0.0	75.0	0.0	16.7	-16.7	0.0	4:1 FORESLOPE
IL 149 (FRANKLIN COUNTY)							
SN 028-7060							
LT STA 183+62. TO STA 184+46.	1.8	75.0	1.4	8.5	-7.1	7.1	3:1 FORESLOPE, 3:1 BACKSLOPE
RT STA 185+48. TO STA 186+32.	0.0	75.0	0.0	8.0	-8.0	8.0	4:1 FORESLOPE
LT STA 186+21. TO STA 187+05.	0.0	75.0	0.0	7.7	-7.7	7.7	
SUB-TOTAL							
						1,254.8	
						695.1	
PROJECT TOTAL						1,949.9	

- VARIOUS
- D9 GUARDRAIL END SECT FY17-1
- FRANKLIN & JEFFERSON

GUARDRAIL SCHEDULE

LOCATION STA TO STA	STEEL PLATE BEAM GUARDRAIL TYPE A, 9 FOOT POSTS	STRONG POST GUARDRAIL ATTACHED TO CULVERT	LONG SPAN GUARDRAIL OVER CULVERT, 12 FOOT 6 INCH SPAN	LONG SPAN GUARDRAIL OVER CULVERT, 18 FOOT 9 INCH SPAN	LONG SPAN GUARDRAIL OVER CULVERT, 25 FOOT 0 INCH SPAN	STEEL RAILING, TYPE 2399	NAME PLATES	VERTICAL ADJUSTMENT OF GUARDRAIL	GUARDRAIL REFLECTORS, TYPE A	GUARDRAIL REMOVAL	TRAFFIC BARRIER TERMINAL, TYPE 6	TRAFFIC BARRIER TERMINAL, TYPE 2	TRAFFIC BARRIER TERMINAL, TYPE 1 (SPECIAL) TANGENT, 27.5"	TRAFFIC BARRIER TERMINAL, TYPE 1, (SPECIAL) TANGENT, 31 7/8"	TERMINAL MARKER - DIRECT APPLIED	COMMENTS
	FOOT	FOOT	FOOT	FOOT	FOOT	FOOT	EACH	FOOT	EACH	FOOT	EACH	EACH	EACH	EACH		
ILLINOIS 14 (FRANKLIN COUNTY)																
LT STA 767+74. TO STA 768+24. SN 028-0020										33.2			1		1	REMOVE AND REPLACE END SECTION TRANSITION AREA
LT STA 768+24. TO STA 768+49. SN 028-0020								25.0								
RT STA 767+74. TO STA 768+24. SN 028-0020										33.2			1		1	REMOVE AND REPLACE END SECTION TRANSITION AREA
RT STA 768+24. TO STA 768+49. SN 028-0020								25.0								
LT STA 793+25. TO STA 793+50. SN 028-0020								25.0								
LT STA 793+50. TO STA 794+00. SN 028-0020										33.2			1		1	REMOVE AND REPLACE END SECTION TRANSITION AREA
RT STA 793+28. TO STA 793+53. SN 028-0020								25.0								
RT STA 793+53. TO STA 794+03. SN 028-0020										33.2			1		1	REMOVE AND REPLACE END SECTION
RT STA 20+79. TO STA 22+23. SN 028-7049										144.0						
RT STA 20+54. TO STA 22+54. SN 028-7049	6.0	94.0									4			2	2	INSTALL TYPE 1 END SECTIONS
RT STA 206+97.75 TO STA 207+47.75 SN 028-0024														1	1	INSTALL TYPE 1 END SECTION
LT STA 206+97.75 TO STA 207+47.75 SN 028-0024														1	1	INSTALL TYPE 1 END SECTION
RT STA 207+23. TO STA 208+29. SN 028-0024										106.0						REMOVE EXISTING GUARDRAIL
LT STA 207+25. TO STA 208+29. SN 028-0024										104.0						REMOVE EXISTING GUARDRAIL
RT STA 207+47.75 TO STA 207+85.25 SN 028-0024	37.5										4					
LT STA 207+47.75 TO STA 207+85.25 SN 028-0024	37.5										4					
RT STA 207+85.25 TO STA 208+29. SN 028-0024												1				REPLACE TYPE 6 TERMINAL
LT STA 207+85.25 TO STA 208+29. SN 028-0024												1				REPLACE TYPE 6 TERMINAL
RT STA 208+29. TO STA 208+72. SN 028-0024							43.0	1.0								BRIDGE PLATE FOR SN 028-0024
LT STA 208+29. TO STA 208+72. SN 028-0024							43.0									
RT STA 208+72. TO STA 209+72. SN 028-0024										100.0						REMOVE EXISTING GUARDRAIL
LT STA 208+72. TO STA 209+72. SN 028-0024										100.0						REMOVE EXISTING GUARDRAIL
RT STA 208+72. TO STA 209+15.75 SN 028-0024											1					REPLACE TYPE 6 TERMINAL
LT STA 208+72. TO STA 209+15.75 SN 028-0024											1					REPLACE TYPE 6 TERMINAL
RT STA 209+15.75 TO STA 209+53.25 SN 028-0024	37.5										4					
LT STA 209+15.75 TO STA 209+53.25 SN 028-0024	37.5										4					
RT STA 209+53.25 TO STA 210+03.25 SN 028-0024														1	1	INSTALL TYPE 1 END SECTION
LT STA 209+53.25 TO STA 210+03.25 SN 028-0024														1	1	INSTALL TYPE 1 END SECTION
RT STA 236+11. TO STA 236+63. SN 028-0025										52.2			1		1	REMOVE AND REPLACE END SECTION TRANSITION AREA
RT STA 236+63. TO STA 236+88. SN 028-0025								25.0								
LT STA 236+69. TO STA 237+27. SN 028-0025										52.2			1		1	REMOVE AND REPLACE END SECTION TRANSITION AREA
LT STA 237+27. TO STA 237+52. SN 028-0025								25.0								
RT STA 238+43. TO STA 238+68. SN 028-0025								25.0								
RT STA 238+68. TO STA 239+20. SN 028-0025										52.2			1		1	REMOVE AND REPLACE END SECTION TRANSITION AREA
LT STA 241+23. TO STA 241+48. SN 028-0025								25.0								
LT STA 241+48. TO STA 242+00. SN 028-0025										52.2			1		1	REMOVE AND REPLACE END SECTION
RT STA 282+16.25 TO STA 282+66.25 SN 028-0026													1		1	INSTALL TYPE 1 END SECTION
RT STA 282+47. TO STA 283+60. SN 028-0026										113.0						REMOVE EXISTING GUARDRAIL
RT STA 282+66.25 TO STA 283+16.25 SN 028-0026	50.0										4					
RT STA 283+16.25 TO STA 283+60. SN 028-0026												1				REPLACE TYPE 6 TERMINAL
RT STA 283+60. TO STA 283+96. SN 028-0026							36.0	1.0								BRIDGE PLATE FOR SN 028-0026
LT STA 283+74. TO STA 284+10. SN 028-0026							36.0									
RT STA 283+96. TO STA 284+80. SN 028-0026										84.0						REMOVE EXISTING GUARDRAIL
LT STA 284+10. TO STA 285+10. SN 028-0026										100.0						REMOVE EXISTING GUARDRAIL
RT STA 283+96. TO STA 284+39.75 SN 028-0026											1					REPLACE TYPE 6 TERMINAL
LT STA 284+10. TO STA 284+53.75 SN 028-0026											1					REPLACE TYPE 6 TERMINAL
RT STA 284+39.75 TO STA 284+52.25 SN 028-0026	12.5										3					
LT STA 284+53.75 TO STA 284+91.25 SN 028-0026	37.5										4					
RT STA 284+52.25 TO STA 285+02.25 SN 028-0026														1	1	INSTALL TYPE 1 END SECTION
LT STA 284+91.25 TO STA 285+41.25 SN 028-0026														1	1	INSTALL TYPE 1 END SECTION
LT STA 326+67. TO STA 327+56. SN 028-7054										89.0						REMOVE EXISTING GUARDRAIL
LT STA 325+80.75 TO STA 326+30.75 SN 028-7054														1	1	INSTALL TYPE 1 END SECTION
LT STA 326+30.75 TO STA 327+93.25 SN 028-7054				162.5							4					
LT STA 327+93.25 TO STA 328+43.25 SN 028-7054														1	1	INSTALL TYPE 1 END SECTION

* VARIOUS
 ** D9 GUARDRAIL END SECT FY17-1
 *** FRANKLIN & JEFFERSON

GUARDRAIL SCHEDULE

LOCATION STA TO STA	STEEL PLATE BEAM GUARDRAIL TYPE A, 9 FOOT POSTS	STRONG POST GUARDRAIL ATTACHED TO CULVERT	LONG SPAN GUARDRAIL OVER CULVERT, 12 FOOT 6 INCH SPAN	LONG SPAN GUARDRAIL OVER CULVERT, 18 FOOT 9 INCH SPAN	LONG SPAN GUARDRAIL OVER CULVERT, 25 FOOT 0 INCH SPAN	STEEL RAILING, TYPE 2399	NAME PLATES	VERTICAL ADJUSTMENT OF GUARDRAIL	GUARDRAIL REFLECTORS, TYPE A	GUARDRAIL REMOVAL	TRAFFIC BARRIER TERMINAL, TYPE 6	TRAFFIC BARRIER TERMINAL, TYPE 2	TRAFFIC BARRIER TERMINAL, TYPE 1 (SPECIAL) TANGENT, 27.5"	TRAFFIC BARRIER TERMINAL, TYPE 1, (SPECIAL) TANGENT, 31 7/8"	TERMINAL MARKER - DIRECT APPLIED	COMMENTS	
	FOOT	FOOT	FOOT	FOOT	FOOT	FOOT	EACH	FOOT	EACH	FOOT	EACH	EACH	EACH	EACH			
ILLINOIS 14 (FRANKLIN COUNTY)																	
RT STA 439+53.25 TO STA 440+03.25 SN 028-0028															1	1	INSTALL TYPE 1 END SECTION
LT STA 439+95.25 TO STA 440+45.25 SN 028-0028															1	1	INSTALL TYPE 1 END SECTION
RT STA 439+81. TO STA 440+97. SN 028-0028										116.0							REMOVE EXISTING GUARDRAIL
RT STA 440+03.25 TO STA 440+53.25 SN 028-0028	50.0									4							
LT STA 440+20. TO STA 441+14. SN 028-0028										94.0							REMOVE EXISTING GUARDRAIL
LT STA 440+45.25 TO STA 440+70.25 SN 028-0028	25.0									3							
RT STA 440+53.25 TO STA 440+97. SN 028-0028												1					REPLACE TYPE 6 TERMINAL
LT STA 440+70.25 TO STA 441+14. SN 028-0028												1					REPLACE TYPE 6 TERMINAL
RT STA 440+97. TO STA 441+38. SN 028-0028						41.0	1.0										BRIDGE PLATE FOR SN 028-0028
LT STA 441+14. TO STA 441+55. SN 028-0028						41.0											
RT STA 441+38. TO STA 442+25. SN 028-0028										87.0							REMOVE EXISTING GUARDRAIL
RT STA 441+38. TO STA 441+81.75 SN 028-0028												1					REPLACE TYPE 6 TERMINAL
LT STA 441+55. TO STA 442+60. SN 028-0028										105.0							REMOVE EXISTING GUARDRAIL
LT STA 441+55. TO STA 441+98.75 SN 028-0028												1					REPLACE TYPE 6 TERMINAL
RT STA 441+81.75 TO STA 442+06.75 SN 028-0028	25.0																
LT STA 441+98.75 TO STA 442+36.25 SN 028-0028	37.5									4							
RT STA 442+06.75 TO STA 442+56.75 SN 028-0028															1	1	INSTALL TYPE 1 END SECTION
LT STA 442+36.25 TO STA 442+86.25 SN 028-0028															1	1	INSTALL TYPE 1 END SECTION
RT STA 447+74.75 TO STA 448+24.75 SN 028-0029															1	1	INSTALL TYPE 1 END SECTION
LT STA 447+74.75 TO STA 448+24.75 SN 028-0029															1	1	INSTALL TYPE 1 END SECTION
RT STA 448+05. TO STA 449+06. SN 028-0029										101.0							REMOVE EXISTING GUARDRAIL
LT STA 448+05. TO STA 449+06. SN 028-0029										101.0							REMOVE EXISTING GUARDRAIL
RT STA 448+24.75 TO STA 448+62.25 SN 028-0029	37.5										4						
LT STA 448+24.75 TO STA 448+62.25 SN 028-0029	37.5										4						
RT STA 448+62.25 TO STA 449+06. SN 028-0029															1		REPLACE TYPE 6 TERMINAL
LT STA 448+62.25 TO STA 449+06. SN 028-0029															1		REPLACE TYPE 6 TERMINAL
RT STA 449+06. TO STA 449+72. SN 028-0029						66.0	1.0										BRIDGE PLATE FOR SN 028-0029
LT STA 449+06. TO STA 449+72. SN 028-0029						66.0											
RT STA 449+72. TO STA 450+74. SN 028-0029										102.0							REMOVE EXISTING GUARDRAIL
LT STA 449+72. TO STA 450+74. SN 028-0029										102.0							REMOVE EXISTING GUARDRAIL
RT STA 449+72. TO STA 450+15.75 SN 028-0029															1		REPLACE TYPE 6 TERMINAL
LT STA 449+72. TO STA 450+15.75 SN 028-0029															1		REPLACE TYPE 6 TERMINAL
RT STA 450+15.75 TO STA 450+53.25 SN 028-0029	37.5										4						
LT STA 450+15.75 TO STA 450+53.25 SN 028-0029	37.5										4						
RT STA 450+53.25 TO STA 451+03.25 SN 028-0029															1	1	INSTALL TYPE 1 END SECTION
LT STA 450+53.25 TO STA 451+03.25 SN 028-0029															1	1	INSTALL TYPE 1 END SECTION
RT STA 509+45. TO STA 509+95.										52.2			1				REMOVE AND REPLACE END SECTION
LT STA 509+45. TO STA 509+95.										52.2			1				REMOVE AND REPLACE END SECTION
RT STA 509+95. TO STA 510+38.								43.0									TRANSITION AREA
LT STA 509+95. TO STA 510+91.								96.0									TRANSITION AREA
RT STA 510+38. TO STA 510+88.										52.2			1				REMOVE AND REPLACE END SECTION
LT STA 510+91. TO STA 511+41.										52.2			1				REMOVE AND REPLACE END SECTION
RT STA 528+61.75 TO STA 529+11.75 SN 028-0030															1	1	INSTALL TYPE 1 END SECTION
LT STA 528+84.25 TO STA 529+34.25 SN 028-0030															1	1	INSTALL TYPE 1 END SECTION
RT STA 528+95. TO STA 529+93. SN 028-0030										98.0							REMOVE EXISTING GUARDRAIL
LT STA 529+07. TO STA 530+03. SN 028-0030										96.0							REMOVE EXISTING GUARDRAIL
RT STA 529+11.75 TO STA 529+49.25 SN 028-0030	37.5										4						
LT STA 529+34.25 TO STA 529+59.25 SN 028-0030	25.0										3						
RT STA 529+49.25 TO STA 529+93. SN 028-0030															1		REPLACE TYPE 6 TERMINAL
LT STA 529+59.25 TO STA 530+03. SN 028-0030															1		REPLACE TYPE 6 TERMINAL
RT STA 529+93. TO STA 530+35. SN 028-0030						42.0	1.0										BRIDGE PLATE FOR SN 028-0030
LT STA 530+03. TO STA 530+45. SN 028-0030						42.0											
RT STA 530+35. TO STA 531+32. SN 028-0030										97.0							REMOVE EXISTING GUARDRAIL
RT STA 530+35. TO STA 530+78.75 SN 028-0030															1		REPLACE TYPE 6 TERMINAL
LT STA 530+45. TO STA 531+48. SN 028-0030										103.0							REMOVE EXISTING GUARDRAIL
LT STA 530+45. TO STA 530+88.75 SN 028-0030															1		REPLACE TYPE 6 TERMINAL
RT STA 530+78.75 TO STA 531+16.25 SN 028-0030	37.5										4						
LT STA 530+88.75 TO STA 531+26.25 SN 028-0030	37.5										4						
RT STA 531+16.25 TO STA 531+66.25 SN 028-0030															1	1	INSTALL TYPE 1 END SECTION
LT STA 531+26.25 TO STA 531+76.25 SN 028-0030															1	1	INSTALL TYPE 1 END SECTION

- VARIOUS
- D9 GUARDRAIL END SECT FY17-1
- FRANKLIN & JEFFERSON

GUARDRAIL SCHEDULE

LOCATION STA TO STA	STEEL PLATE BEAM GUARDRAIL TYPE A, 9 FOOT POSTS	STRONG POST GUARDRAIL ATTACHED TO CULVERT	LONG SPAN GUARDRAIL OVER CULVERT, 12 FOOT 6 INCH SPAN	LONG SPAN GUARDRAIL OVER CULVERT, 18 FOOT 9 INCH SPAN	LONG SPAN GUARDRAIL OVER CULVERT, 25 FOOT 0 INCH SPAN	STEEL RAILING, TYPE 2399	NAME PLATES	VERTICAL ADJUSTMENT OF GUARDRAIL	GUARDRAIL REFLECTORS, TYPE A	GUARDRAIL REMOVAL	TRAFFIC BARRIER TERMINAL, TYPE 6	TRAFFIC BARRIER TERMINAL, TYPE 2	TRAFFIC BARRIER TERMINAL, TYPE 1 (SPECIAL) TANGENT, 27.5"	TRAFFIC BARRIER TERMINAL, TYPE 1, (SPECIAL) TANGENT, 31 7/8"	TERMINAL MARKER - DIRECT APPLIED	COMMENTS	
	FOOT	FOOT	FOOT	FOOT	FOOT	FOOT	EACH	FOOT	EACH	FOOT	EACH	EACH	EACH	EACH			
ILLINOIS 14 (FRANKLIN COUNTY)																	
RT STA 573+13. TO STA 573+63.															1	1	INSTALL TYPE 1 END SECTION
RT STA 573+63. TO STA 575+38.					175.0					4							
RT STA 574+12.5 TO STA 574+88.5											76.0						REMOVE EXISTING GUARDRAIL
RT STA 575+38. TO STA 576+50.5	112.5									4							
LT STA 575+88. TO STA 576+38. SN 028-7057															1	1	INSTALL TYPE 1 END SECTION
RT STA 567+13.5 TO STA 576+88. SN 028-7057											99.5						REMOVE EXISTING GUARDRAIL
LT STA 576+13.5 TO STA 576+88. SN 028-7057											112.0						REMOVE EXISTING GUARDRAIL
LT STA 576+38. TO STA 576+50.5 SN 028-7057	12.5									2							
RT STA 576+50.5 TO STA 576+88. SN 028-7057																	
LT STA 576+50.5 TO STA 576+88. SN 028-7057																	
RT STA 576+88. TO STA SN 028-7057	25.0														1	1	SHORT RADIUS GUARDRAIL
LT STA 576+88. TO STA SN 028-7057	25.0														1	1	SHORT RADIUS GUARDRAIL PLACED IN FRONT OF STOP SIGN
RT STA 594+63. TO STA 595+13. SN 028-7058															1	1	INSTALL TYPE 1 END SECTION
LT STA 594+63. TO STA 595+13. SN 028-7058															1	1	INSTALL TYPE 1 END SECTION
RT STA 595+13. TO STA 596+88. SN 028-7058						175.0				4							
LT STA 595+13. TO STA 596+88. SN 028-7058						175.0				4							
RT STA 595+63. TO STA 596+38. SN 028-7058											75.0						REMOVE EXISTING GUARDRAIL
LT STA 595+63. TO STA 596+38. SN 028-7058											75.0						REMOVE EXISTING GUARDRAIL
RT STA 596+88. TO STA 597+38. SN 028-7058															1	1	INSTALL TYPE 1 END SECTION
LT STA 596+88. TO STA 597+38. SN 028-7058															1	1	INSTALL TYPE 1 END SECTION
RT STA 629+55.75 TO STA 630+05.75 SN 028-0031															1	1	INSTALL TYPE 1 END SECTION
LT STA 629+49.25 TO STA 629+99.25 SN 028-0031															1	1	INSTALL TYPE 1 END SECTION
RT STA 629+82. TO STA 630+74.5 SN 028-0031											92.5						REMOVE EXISTING GUARDRAIL
LT STA 629+82. TO STA 630+80.5 SN 028-0031											98.5						REMOVE EXISTING GUARDRAIL
RT STA 630+05.75 TO STA 630+30.75 SN 028-0031	25.0																
LT STA 629+99.25 TO STA 630+36.75 SN 028-0031	37.5																
RT STA 630+30.75 TO STA 630+74.5 SN 028-0031																	
LT STA 630+36.75 TO STA 630+80.5 SN 028-0031																	
RT STA 630+74.5 TO STA 631+23.5 SN 028-0031						49.0	1.0										BRIDGE PLATE FOR SN 028-0031
LT STA 630+80.5 TO STA 631+29.5 SN 028-0031						49.0											
RT STA 631+23.5 TO STA 632+31. SN 028-0031											107.5						REMOVE EXISTING GUARDRAIL
RT STA 631+23.5 TO STA 631+67.25 SN 028-0031															1		REPLACE TYPE 6 TERMINAL
LT STA 631+29.5 TO STA 632+31. SN 028-0031											101.5						REMOVE EXISTING GUARDRAIL
LT STA 631+29.5 TO STA 631+73.25 SN 028-0031															1		REPLACE TYPE 6 TERMINAL
RT STA 631+67.25 TO STA 632+17.25 SN 028-0031	50.0																
LT STA 631+73.25 TO STA 632+10.75 SN 028-0031	37.5																
RT STA 632+17.25 TO STA 632+67.25 SN 028-0031																	
LT STA 632+10.75 TO STA 632+60.75 SN 028-0031																	
LT STA 651+28.12 TO STA 651+78.12																	
LT STA 652+25. TO STA 653+00.											75.0						REMOVE EXISTING GUARDRAIL
LT STA 651+78.12 TO STA 653+46.57						168.8											
LT STA 653+46.57 TO STA 653+96.57																	INSTALL TYPE 1 END SECTION
SUB-TOTAL ILLINOIS 14																	
	1006.0	244.00	162.5	168.8	525.0	554.0	6.0	339.0	123	3604.9	23	0	13	36	49		
ILLINOIS 37 (FRANKLIN COUNTY)																	
RT STA 21+95. TO STA 22+47.2 SN 028-7084																	
RT STA 22+47.2 TO STA 22+72.2								25.0									REMOVE AND REPLACE END SECTION TRANSITION AREA
LT STA 22+56. TO STA 23+08.2 SN 028-7084																	
LT STA 23+08.2 TO STA 23+33.2								25.0									REMOVE AND REPLACE END SECTION TRANSITION AREA
RT STA 23+71.8 TO STA 23+96.8								25.0									TRANSITION AREA
RT STA 23+96.8 TO STA 24+49. SN 028-7084																	REMOVE AND REPLACE END SECTION TRANSITION AREA
LT STA 24+27.8 TO STA 24+52.8								25.0									TRANSITION AREA
LT STA 24+52.8 TO STA 25+05. SN 028-7084																	REMOVE AND REPLACE END SECTION

- VARIOUS
- D9 GUARDRAIL END SECT FY17-1
- FRANKLIN & JEFFERSON

GUARDRAIL SCHEDULE

LOCATION STA TO STA	STEEL PLATE BEAM GUARDRAIL TYPE A, 9 FOOT POSTS	STRONG POST GUARDRAIL ATTACHED TO CULVERT	LONG SPAN GUARDRAIL OVER CULVERT, 12 FOOT 6 INCH SPAN	LONG SPAN GUARDRAIL OVER CULVERT, 18 FOOT 9 INCH SPAN	LONG SPAN GUARDRAIL OVER CULVERT, 25 FOOT 0 INCH SPAN	STEEL RAILING, TYPE 2399	NAME PLATES	VERTICAL ADJUSTMENT OF GUARDRAIL	GUARDRAIL REFLECTORS, TYPE A	GUARDRAIL REMOVAL	TRAFFIC BARRIER TERMINAL, TYPE 6	TRAFFIC BARRIER TERMINAL, TYPE 2	TRAFFIC BARRIER TERMINAL, TYPE 1 (SPECIAL) TANGENT, 27.5"	TRAFFIC BARRIER TERMINAL, TYPE 1, (SPECIAL) TANGENT, 31 7/8"	TERMINAL MARKER - DIRECT APPLIED	COMMENTS	
	FOOT	FOOT	FOOT	FOOT	FOOT	FOOT	EACH	FOOT	EACH	FOOT	EACH	EACH	EACH	EACH			
ILLINOIS 37 (FRANKLIN COUNTY)																	
RT STA 964+58. TO STA 965+08. SN 028-0033														1		1	REPLACE END SECTION
RT STA 965+08. TO STA 965+33. SN 028-0033								25.0									TRANSITION AREA
LT STA 964+58. TO STA 965+08. SN 028-0033													1			1	REPLACE END SECTION
LT STA 965+08. TO STA 965+33. SN 028-0033								25.0									TRANSITION AREA
RT STA 964+83. TO STA 965+08. SN 028-0033										25.0							REMOVE EXISTING GUARDRAIL
LT STA 964+83. TO STA 965+08. SN 028-0033										25.0							REMOVE EXISTING GUARDRAIL
RT STA 966+95. TO STA 967+20. SN 028-0033										25.0							REMOVE EXISTING GUARDRAIL
RT STA 966+70. TO STA 966+95. SN 028-0033								25.0									TRANSITION AREA
RT STA 966+95. TO STA 967+45. SN 028-0033													1			1	REPLACE END SECTION
SUB-TOTAL ILLINOIS 37	0.0	0.00	0.0	0.0	0.0	0.0	0.0	175.0	0	283.8	0	0	7	0	7		
ILLINOIS 149 (FRANKLIN COUNTY)																	
LT STA 183+95.5 TO STA 184+45.5 SN 028-7060															1	1	REPLACE END SECTION
RT STA 185+22. TO STA 185+48. SN 028-7060		25.0									2						
RT STA 185+22. TO STA 185+23. SN 028-7060													1				SHORT RADIUS GUARDRAIL CURVED AROUND DRIVEWAY
LT STA 184+45.5 TO STA 186+20.5 SN 028-7060								175.0			4	100.0					REMOVE EXISTING GUARDRAIL
LT STA 184+57. TO STA 186+09. SN 028-7060												152.0					REMOVE EXISTING GUARDRAIL
RT STA 185+48. TO STA 185+98. SN 028-7060														1		1	REPLACE END SECTION
LT STA 186+20.5 TO STA 186+70.5 SN 028-7060														1		1	REPLACE END SECTION
RT STA 0+70. TO STA 1+45.											75.0						REMOVE EXISTING GUARDRAIL
RT STA 0+55. TO STA 1+05.														1		1	REPLACE END SECTION
RT STA 1+05. TO STA 1+55.														1		1	REPLACE END SECTION
RT STA 602+70. TO STA 603+22.2 SN 028-0037																1	REMOVE AND REPLACE END SECTION
RT STA 603+22.2 TO STA 604+66.25 SN 028-0037								144.0								1	TRANSITION AREA
LT STA 604+16.25 TO STA 604+66.25 SN 028-0037																1	REPLACE END SECTION
LT STA 604+46. TO STA 605+10. SN 028-0037											64.0						REMOVE EXISTING GUARDRAIL
RT STA 604+66.25 TO STA 605+10. SN 028-0037											43.8	1					REMOVE AND REPLACE TYPE 6
LT STA 604+66.25 TO STA 605+10. SN 028-0037												1					REPLACE TYPE 6
RT STA 609+29. TO STA 609+92. SN 028-0037											63.0						REMOVE EXISTING GUARDRAIL
RT STA 609+29. TO STA 609+72.75 SN 028-0037												1					REPLACE TYPE 6
RT STA 609+72.75 TO STA 610+22.75 SN 028-0037															1	1	REPLACE END SECTION
RT STA 564+20. TO STA 564+72.2 SN 028-0038																1	REMOVE AND REPLACE END SECTION
RT STA 564+72.2 TO STA 567+24.25 SN 028-0038								252.0									TRANSITION AREA
RT STA 567+24.25 TO STA 567+68. SN 028-0038											43.8	1					REMOVE AND REPLACE TYPE 6
LT STA 568+92. TO STA 569+35.75 SN 028-0038											43.8	1					REMOVE AND REPLACE TYPE 6
RT STA 568+92. TO STA 569+35.75 SN 028-0038											43.8	1					REMOVE AND REPLACE TYPE 6
LT STA 569+35.75 TO STA 569+77.8 SN 028-0038								42.0									TRANSITION AREA
RT STA 569+35.75 TO STA 571+47.8 SN 028-0038								212.0									TRANSITION AREA
LT STA 570+30. TO STA 569+77.8 SN 028-0038													1			1	REMOVE AND REPLACE END SECTION
RT STA 571+47.8 TO STA 572+00. SN 028-0038													1			1	REMOVE AND REPLACE END SECTION
RT STA 679+32.8 TO STA 681+37.2 SN 028-7071											204.4						REMOVE EXISTING GUARDRAIL
RT STA 679+35. TO STA 679+85. SN 028-7071														1		1	REPLACE END SECTION
RT STA 679+85. TO STA 680+85. SN 028-7071		100.0															
RT STA 680+85. TO STA 681+35. SN 028-7071														1		1	REPLACE END SECTION
RT STA 692+08.8 TO STA 692+61. SN 028-0039														1		1	REMOVE AND REPLACE END SECTION
RT STA 692+61. TO STA 692+86. SN 028-0039								25.0									TRANSITION AREA
LT STA 695+69. TO STA 695+94. SN 028-0039								25.0									TRANSITION AREA
LT STA 695+94. TO STA 696+46.2 SN 028-0039														1		1	REMOVE AND REPLACE END SECTION
RT STA 1057+06. TO STA 1057+58.2 SN 028-0040																	
RT STA 1057+58.2 TO STA 1057+83.2 SN 028-0040								25.0						1		1	REMOVE AND REPLACE END SECTION
LT STA 1062+11.8 TO STA 1062+36.8 SN 028-0040								25.0									TRANSITION AREA
LT STA 1062+36.8 TO STA 1062+89. SN 028-0040														1		1	REMOVE AND REPLACE END SECTION
SUB-TOTAL ILLINOIS 149	100.0	25.00	0.0	0.0	175.0	0.0	0.0	750.0	9	1251.0	6	1	9	8	17		
SUB-TOTAL FRANKLIN COUNTY	1106.0	269.00	162.5	168.8	700.0	554.0	6.0	1264.0	132	5139.7	29	1	73		73		

• VARIOUS
 •• D9 GUARDRAIL END SECT FY17-1
 ••• FRANKLIN & JEFFERSON

GUARDRAIL SCHEDULE

LOCATION STA TO STA	STEEL PLATE BEAM GUARDRAIL TYPE A, 9 FOOT POSTS	STRONG POST GUARDRAIL ATTACHED TO CULVERT	LONG SPAN GUARDRAIL OVER CULVERT, 12 FOOT 6 INCH SPAN	LONG SPAN GUARDRAIL OVER CULVERT, 18 FOOT 9 INCH SPAN	LONG SPAN GUARDRAIL OVER CULVERT, 25 FOOT 0 INCH SPAN	STEEL RAILING, TYPE 2399	NAME PLATES	VERTICAL ADJUSTMENT OF GUARDRAIL	GUARDRAIL REFLECTORS, TYPE A	GUARDRAIL REMOVAL	TRAFFIC BARRIER TERMINAL, TYPE 6	TRAFFIC BARRIER TERMINAL, TYPE 2	TRAFFIC BARRIER TERMINAL, TYPE 1 (SPECIAL) TANGENT, 27.5"	TRAFFIC BARRIER TERMINAL, TYPE 1 (SPECIAL) TANGENT, 31 7/8"	TERMINAL MARKER - DIRECT APPLIED	COMMENTS
	FOOT	FOOT	FOOT	FOOT	FOOT	FOOT	EACH	FOOT	EACH	FOOT	EACH	EACH	EACH	EACH		
ILLINOIS 37 (JEFFERSON COUNTY)																
RT STA 866+86. TO STA 867+38.2 SN 041-0039										52.2			1			REMOVE AND REPLACE END SECTION
RT STA 867+38.2 TO STA 867+63.2 SN 041-0039								25.0								TRANSITION AREA
RT STA 878+45.8 TO STA 878+70.8 SN 041-0039								25.0								TRANSITION AREA
RT STA 878+70.8 TO STA 879+23. SN 041-0039										52.2			1			REMOVE AND REPLACE END SECTION
LT STA 878+64.8 TO STA 878+89.8 SN 041-0039								25.0								TRANSITION AREA
LT STA 878+89.8 TO STA 879+47. SN 041-0039										52.2			1			REMOVE AND REPLACE END SECTION
SUB-TOTAL ILLINOIS 37	0.0	0.00	0.0	0.0	0.0	0.0	0.0	75.0	0	156.6	0	0	3	0	3	
ILLINOIS 15 (JEFFERSON COUNTY)																
RT STA 920+51. TO STA 921+42. SN 041-0019										91.0						REMOVE EXISTING GUARDRAIL
RT STA 920+53. TO STA 921+03. SN 041-0019														1	1	REPLACE END SECTION
RT STA 921+03. TO STA 921+28. SN 041-0019	25.0									2						
RT STA 921+28. TO STA 921+41. SN 041-0019												1				REPLACE TYPE 6
LT STA 920+71. TO STA 921+23.2 SN 041-0019										52.2			1			REMOVE AND REPLACE END SECTION
LT STA 921+23.2 TO STA 921+48.2 SN 041-0019								25.0								TRANSITION AREA
LT STA 924+89. TO STA 925+80. SN 041-0019										91.0						REMOVE AND REPLACE END SECTION
LT STA 924+89. TO STA 925+05. SN 041-0019												1				REPLACE TYPE 6
LT STA 925+05. TO STA 925+30. SN 041-0019	25.0									2						
LT STA 925+30. TO STA 925+80. SN 041-0019														1	1	REPLACE END SECTION
RT STA 924+70.8 TO STA 924+95.8 SN 041-0019								25.0								TRANSITION AREA
RT STA 924+95.8 TO STA 925+48. SN 041-0019										52.2			1			REMOVE AND REPLACE END SECTION
RT STA 1221+05. TO STA 1221+57.2 SN 041-0024										52.2			1			REMOVE AND REPLACE END SECTION
RT STA 1221+57.2 TO STA 1221+82.2 SN 041-0024								25.0								TRANSITION AREA
LT STA 1221+76. TO STA 1222+28.2 SN 041-0024										52.2			1			REMOVE AND REPLACE END SECTION
LT STA 1222+28.2 TO STA 1222+53.2 SN 041-0024								25.0								TRANSITION AREA
RT STA 1223+61.8 TO STA 1223+86.8 SN 041-0024								25.0								TRANSITION AREA
RT STA 1223+86.8 TO STA 1224+39. SN 041-0024										52.2			1			REMOVE AND REPLACE END SECTION
LT STA 1224+37.8 TO STA 1224+62.8 SN 041-0024								25.0								TRANSITION AREA
LT STA 1224+62.8 TO STA 1225+15. SN 041-0024										52.2			1			REMOVE AND REPLACE END SECTION
RT STA 768+71. TO STA 769+23.2 SN 041-0025										52.2			1			REMOVE AND REPLACE END SECTION
RT STA 769+23.2 TO STA 769+48.2 SN 041-0025								25.0								TRANSITION AREA
LT STA 774+64.8 TO STA 774+89.8 SN 041-0025								25.0								TRANSITION AREA
LT STA 774+89.8 TO STA 775+42. SN 041-0025										52.2			1			REMOVE AND REPLACE END SECTION
RT STA 17+56.8 TO STA 18+09. SN 041-0026										52.2			1			REMOVE AND REPLACE END SECTION
RT STA 18+09. TO STA 18+34. SN 041-0026								25.0								TRANSITION AREA
LT STA 18+28.2 TO STA 18+80.4 SN 041-0026										52.2			1			REMOVE AND REPLACE END SECTION
LT STA 18+80.4 TO STA 19+05.4 SN 041-0026								25.0								TRANSITION AREA
LT STA 21+25. TO STA 21+50. SN 041-0026								25.0								TRANSITION AREA
LT STA 21+50. TO STA 22+02.2 SN 041-0026										52.2			1			REMOVE AND REPLACE END SECTION
RT STA 20+98.6 TO STA 21+23.6 SN 041-0026								25.0								TRANSITION AREA
RT STA 21+23.6 TO STA 21+75.8 SN 041-0026										52.2			1			REMOVE AND REPLACE END SECTION

- VARIOUS
- D9 GUARDRAIL END SECT FY17-1
- FRANKLIN & JEFFERSON

GUARDRAIL SCHEDULE

LOCATION STA TO STA	STEEL PLATE BEAM GUARDRAIL TYPE A, 9 FOOT POSTS	STRONG POST GUARDRAIL ATTACHED TO CULVERT	LONG SPAN GUARDRAIL OVER CULVERT, 12 FOOT 6 INCH SPAN	LONG SPAN GUARDRAIL OVER CULVERT, 18 FOOT 9 INCH SPAN	LONG SPAN GUARDRAIL OVER CULVERT, 25 FOOT 0 INCH SPAN	STEEL RAILING, TYPE 2399	NAME PLATES	VERTICAL ADJUSTMENT OF GUARDRAIL	GUADRAIL REFLECTORS, TYPE A	GUARDRAIL REMOVAL	TRAFFIC BARRIER TERMINAL, TYPE 6	TRAFFIC BARRIER TERMINAL, TYPE 2	TRAFFIC BARRIER TERMINAL, TYPE 1 (SPECIAL) TANGENT, 27.5"	TRAFFIC BARRIER TERMINAL, TYPE 1, (SPECIAL) TANGENT, 31 7/8"	TERMINAL MARKER - DIRECT APPLIED	COMMENTS	
	FOOT	FOOT	FOOT	FOOT	FOOT	FOOT	EACH	FOOT	EACH	FOOT	EACH	EACH	EACH	EACH	EACH		
ILLINOIS 142 (JEFFERSON COUNTY)																	
LT STA 119+50. TO STA 120+02.2 SN 041-0044														1		1	REMOVE AND REPLACE END SECTION TRANSITION AREA
LT STA 120+02.2 TO STA 120+27.2 SN 041-0044								25.0									REMOVE AND REPLACE END SECTION
LT STA 120+31.8 TO STA 120+84. SN 041-0044														1		1	REMOVE AND REPLACE END SECTION
RT STA 120+31.8 TO STA 120+84. SN 041-0044														1		1	REMOVE AND REPLACE END SECTION
RT STA 544+25. TO STA 544+77.2 FILL																	REMOVE AND REPLACE END SECTION
RT STA 544+77.2 TO STA 545+02.2 FILL								25.0									TRANSITION AREA
LT STA 545+25. TO STA 545+77.2 FILL														1		1	REMOVE AND REPLACE END SECTION
LT STA 545+77.2 TO STA 546+02.2 FILL								25.0									TRANSITION AREA
LT STA 549+64.8 TO STA 549+89.8 FILL								25.0									TRANSITION AREA
LT STA 549+89.8 TO STA 550+42. FILL																	REMOVE AND REPLACE END SECTION
RT STA 549+88.8 TO STA 550+13.8 FILL								25.0								1	TRANSITION AREA
RT STA 550+13.8 TO STA 550+66. FILL																1	REMOVE AND REPLACE END SECTION
RT STA 433+05. TO STA 433+57.2 CULVERT																	REMOVE AND REPLACE END SECTION
RT STA 433+57.2 TO STA 433+82.2 CULVERT								25.0									TRANSITION AREA
LT STA 434+66. TO STA 435+18.2 CULVERT																	REMOVE AND REPLACE END SECTION
LT STA 435+18.2 TO STA 435+43.2 CULVERT								25.0								1	TRANSITION AREA
RT STA 435+30.8 TO STA 435+55.8 CULVERT								25.0									TRANSITION AREA
RT STA 435+55.8 TO STA 436+08. CULVERT																	REMOVE AND REPLACE END SECTION
LT STA 437+52.8 TO STA 437+77.8 CULVERT								25.0									TRANSITION AREA
LT STA 437+77.8 TO STA 438+30. CULVERT																1	REMOVE AND REPLACE END SECTION
RT STA 580+67. TO STA 581+19.2 SN 041-0046																	REMOVE AND REPLACE END SECTION
RT STA 581+19.2 TO STA 581+44.2 SN 041-0046								25.0									TRANSITION AREA
LT STA 581+71. TO STA 582+23.2 SN 041-0046																	REMOVE AND REPLACE END SECTION
LT STA 582+23.2 TO STA 582+48.2 SN 041-0046								25.0									TRANSITION AREA
RT STA 584+62.8 TO STA 584+87.8 SN 041-0046								25.0									TRANSITION AREA
RT STA 584+87.8 TO STA 585+40. SN 041-0046																	REMOVE AND REPLACE END SECTION
LT STA 585+62.8 TO STA 585+87.8 SN 041-0046								25.0									TRANSITION AREA
LT STA 585+87.8 TO STA 586+40. SN 041-0046																1	REMOVE AND REPLACE END SECTION
RT STA 676+82. TO STA 677+34.2 SN 041-0099																	REMOVE AND REPLACE END SECTION
RT STA 677+34.2 TO STA 677+59.2 SN 041-0099								25.0									TRANSITION AREA
LT STA 677+78. TO STA 678+30.2 SN 041-0099																	REMOVE AND REPLACE END SECTION
LT STA 678+30.2 TO STA 678+55.2 SN 041-0099								25.0								1	TRANSITION AREA
RT STA 680+00.8 TO STA 680+25.8 SN 041-0099								25.0									TRANSITION AREA
RT STA 680+25.8 TO STA 680+78. SN 041-0099																1	REMOVE AND REPLACE END SECTION
RT STA 681+13. TO STA 681+65.2 SN 041-0048																	REMOVE AND REPLACE END SECTION
RT STA 681+65.2 TO STA 681+90.2 SN 041-0048								25.0									TRANSITION AREA
RT STA 684+31.8 TO STA 684+56.8 SN 041-0048																	REMOVE AND REPLACE END SECTION
RT STA 684+56.8 TO STA 685+09. SN 041-0048								25.0								1	TRANSITION AREA
LT STA 685+42.8 TO STA 685+67.8 SN 041-0048								25.0									TRANSITION AREA
LT STA 685+67.8 TO STA 686+20. SN 041-0048																1	REMOVE AND REPLACE END SECTION
SUB-TOTAL ILLINOIS 142	0.0	0.00	0.0	0.0	0.0	0.0	0.0	875.0	0	1931.2	0	0	37	0	37		
SUB-TOTAL JEFFERSON COUNTY	50.0	0.00	0.0	0.0	0.0	0.0	0.0	1450.0	4	3313.8	0	2	62	0	62		
SUB-TOTAL ILLINOIS 14	1006.0	244.00	162.5	168.8	525.0	554.0	6.0	339.0	123	3604.9	23	0	13	36	49		
SUB-TOTAL ILLINOIS 37	0.0	0.00	0.0	0.0	0.0	0.0	0.0	175.0	0	283.8	0	0	7	0	7		
SUB-TOTAL ILLINOIS 149	100.0	25.00	0.0	0.0	175.0	0.0	0.0	750.0	9	1251.0	6	1	9	8	17		
SUB-TOTAL ILLINOIS 37	0.0	0.00	0.0	0.0	0.0	0.0	0.0	75.0	0	156.6	0	0	3	0	3		
SUB-TOTAL ILLINOIS 15	50.0	0.00	0.0	0.0	0.0	0.0	0.0	500.0	4	1226.0	0	2	20	2	22		
SUB-TOTAL ILLINOIS 142	0.0	0.00	0.0	0.0	0.0	0.0	0.0	875.0	0	1931.2	0	0	37	0	37		
PROJECT TOTAL	1156.0	269.00	162.5	168.8	700.0	554.0	6.0	2714.0	136	8453.5	29	3	135	0	135		

- VARIOUS
- D9 GUARDRAIL END SECT FY17-1
- FRANKLIN & JEFFERSON

PIPE SCHEDULE

LOCATION STA TO STA	PIPE CULVERTS, CLASS A, TYPE 1, 30"	PRECAST REINFORCED CONCRETE FLARED END SECTION, 30"	CONCRETE COLLAR	PIPE CULVERT REMOVAL	PIPE CULVERTS, CLASS D, TYPE 1, 24"	METAL END SECTIONS, 24"	INLET AND PIPE PROTECTION
	FOOT	EACH	CU YD	FOOT	FOOT	EACH	EACH
IL 14 (FRANKLIN COUNTY)							
SN 028-0026							
RT STA 281+82. TO STA 282+66.					84	2	1
LT STA 285+06. TO STA 285+90.					84	2	1
SN 028-7054							
LT STA 327+93. TO STA 328+77.					84	2	1
SN 028-7058							
LT STA 594+29. TO STA 595+13.					84	2	1
LT STA 596+88. TO STA 597+72.					84	2	1
SN 028-0031							
LT STA 629+15. TO STA 629+99.					84	2	1
SN 028-7049							
RT STA 20+69. TO STA 21+29.	60	1	0.37	6			
MACEDONIA RD							
LT STA 650+94. TO STA 651+78.					84	2	1
SUB-TOTAL	60	1	0.37	6	588	14	7

- VARIOUS
- D9 GUARDRAIL END SECT FY17-1
- FRANKLIN & JEFFERSON

FILE NAME =	USER NAME = pritchettll	DESIGNED -	REVISED -	STATE OF ILLINOIS DEPARTMENT OF TRANSPORTATION	PIPE SCHEDULE			F.A. RTE.	SECTION	COUNTY	TOTAL SHEETS	SHEET NO.
pw:\IL\084EBIDINTEG.illinois.gov\PWIDOT\Documents\DOT Offices\District 9\Projects\78538\Drawings\CAD\Sheets\shite-cvr-soq.index.dwg		DRAWN	REVISED -									
Default	PLOT SCALE = 100.0000' / in.	CHECKED -	REVISED -									
	PLOT DATE = 10/19/2016	DATE -	REVISED -			SCALE:	SHEET	OF	SHEETS	STA.	TO	STA.

CONTRACT NO. 78538

SEEDING SCHEDULE

LOCATION STA TO STA	SEEDING, CLASS 2	SEEDING, CLASS 7	NITROGEN FERTILIZER NUTRIENT	PHOSPHOROU S FERTILIZER NUTRIENT	POTASSIUM FERTILIZER NUTRIENT	AGRICULTURAL GROUND LIMESTONE	TEMPORARY EROSION CONTROL SEDDING	PERIMETER EROSION BARRIER	TEMPORARY DITCH CHECKS	MULCH, METHOD 2
	ACRE		POUND	POUND	POUND	TON	POUND	FOOT	FOOT	ACRE
IL 14 (FRANKLIN COUNTY)										
SN 028-7049										
RT STA 20+69 TO STA 21+29.	0.03	0.03	5	2	2	0.1	5	84		0.05
SN 028-0024										
LT STA 206+64. TO STA 207+48.	0.03	0.03	5	3	3	0.1	6	84		0.06
RT STA 206+64. TO STA 207+48.	0.03	0.03	5	3	3	0.1	6	84		0.06
LT STA 209+53. TO STA 210+37.	0.03	0.03	6	3	3	0.1	7	84		0.07
RT STA 209+53. TO STA 210+37.	0.03	0.03	5	2	2	0.1	5	84		0.05
SN 028-0025										
RT STA 235+77. TO STA 236+61.	0.03	0.03	5	2	2	0.1	5	84		0.05
LT STA 236+35. TO STA 237+19.	0.02	0.02	3	2	2	0.0	3	84		0.03
RT STA 238+70. TO STA 239+54.	0.02	0.02	3	2	2	0.0	3	84		0.03
LT STA 241+50. TO STA 242+34.	0.04	0.04	8	4	4	0.1	9	84		0.09
SN 028-0026										
RT STA 281+82. TO STA 282+66.	0.06	0.06	10	5	5	0.1	12		20	0.12
RT STA 284+52. TO STA 285+36.	0.02	0.02	4	2	2	0.0	5	84		0.05
LT STA 285+06. TO STA 285+90.	0.02	0.02	3	2	2	0.0	3		20	0.03
SN 028-7054										
LT STA 325+47. TO STA 326+30.	0.02	0.02	4	2	2	0.0	5	84		0.05
LT STA 327+93. TO STA 328+77.	0.03	0.03	6	3	3	0.1	6		20	0.06
SN 028-0028										
RT STA 439+19. TO STA 440+03.	0.02	0.02	4	2	2	0.0	5	84		0.05
LT STA 439+61. TO STA 440+45.	0.02	0.02	4	2	2	0.0	4	84		0.04
RT STA 442+07. TO STA 442+91.	0.02	0.02	3	2	2	0.0	4	84		0.04
LT STA 442+36. TO STA 443+20.	0.02	0.02	4	2	2	0.0	4	84		0.04
SN 028-0029										
LT STA 447+41. TO STA 448+25.	0.04	0.04	7	4	4	0.1	8	84		0.08
RT STA 447+41. TO STA 448+25.	0.04	0.04	8	4	4	0.1	8	84		0.08
LT STA 450+53. TO STA 451+37.	0.04	0.04	7	4	4	0.1	8	84		0.08
RT STA 450+53. TO STA 451+37.	0.06	0.06	11	6	6	0.1	12	84		0.12
SUB-TOTAL	0.67	0.67	120	60	60	1.3	134	1596	60	1.34

- VARIOUS
- D9 GUARDRAIL END SECT FY17-1
- FRANKLIN & JEFFERSON

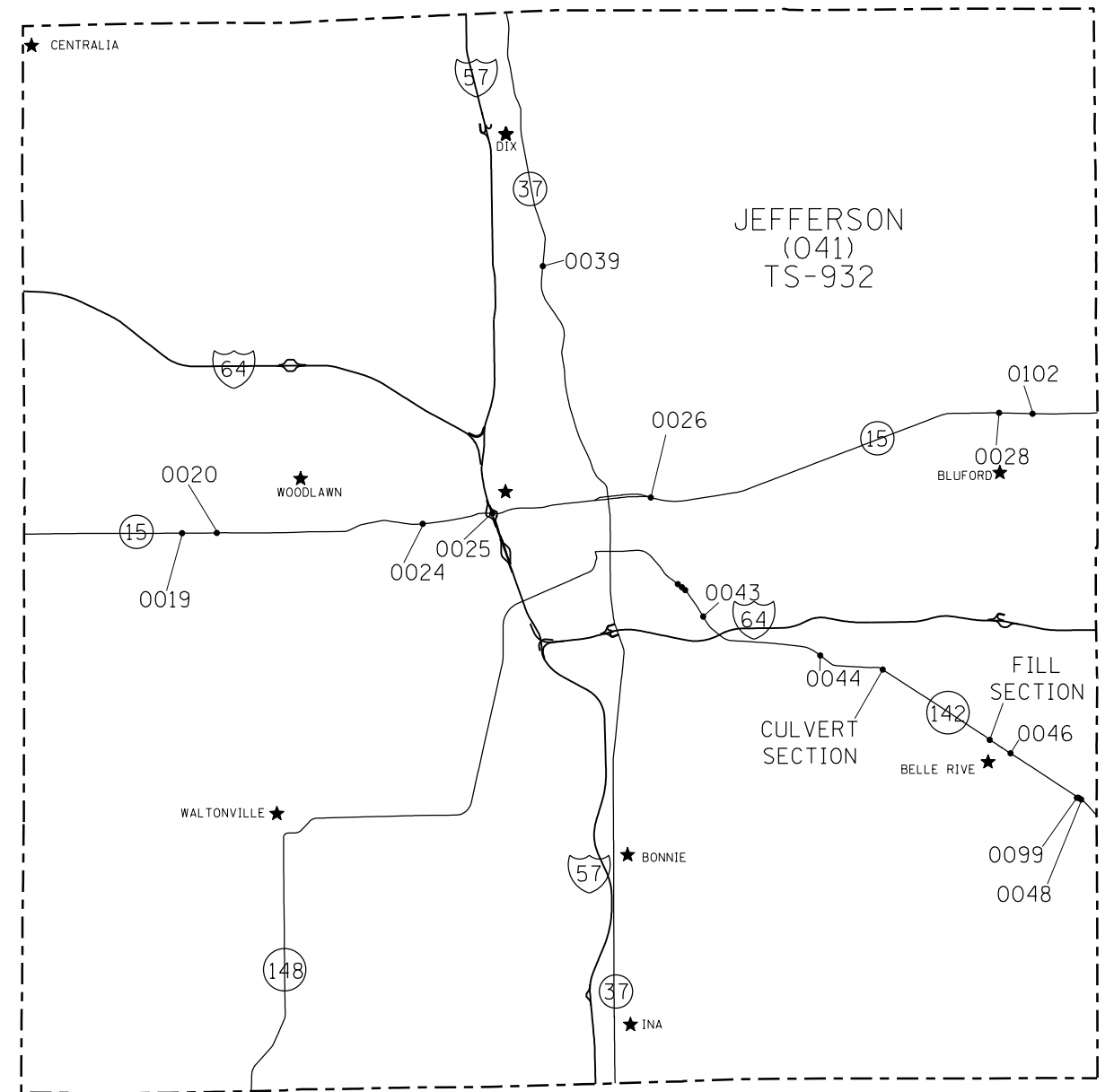
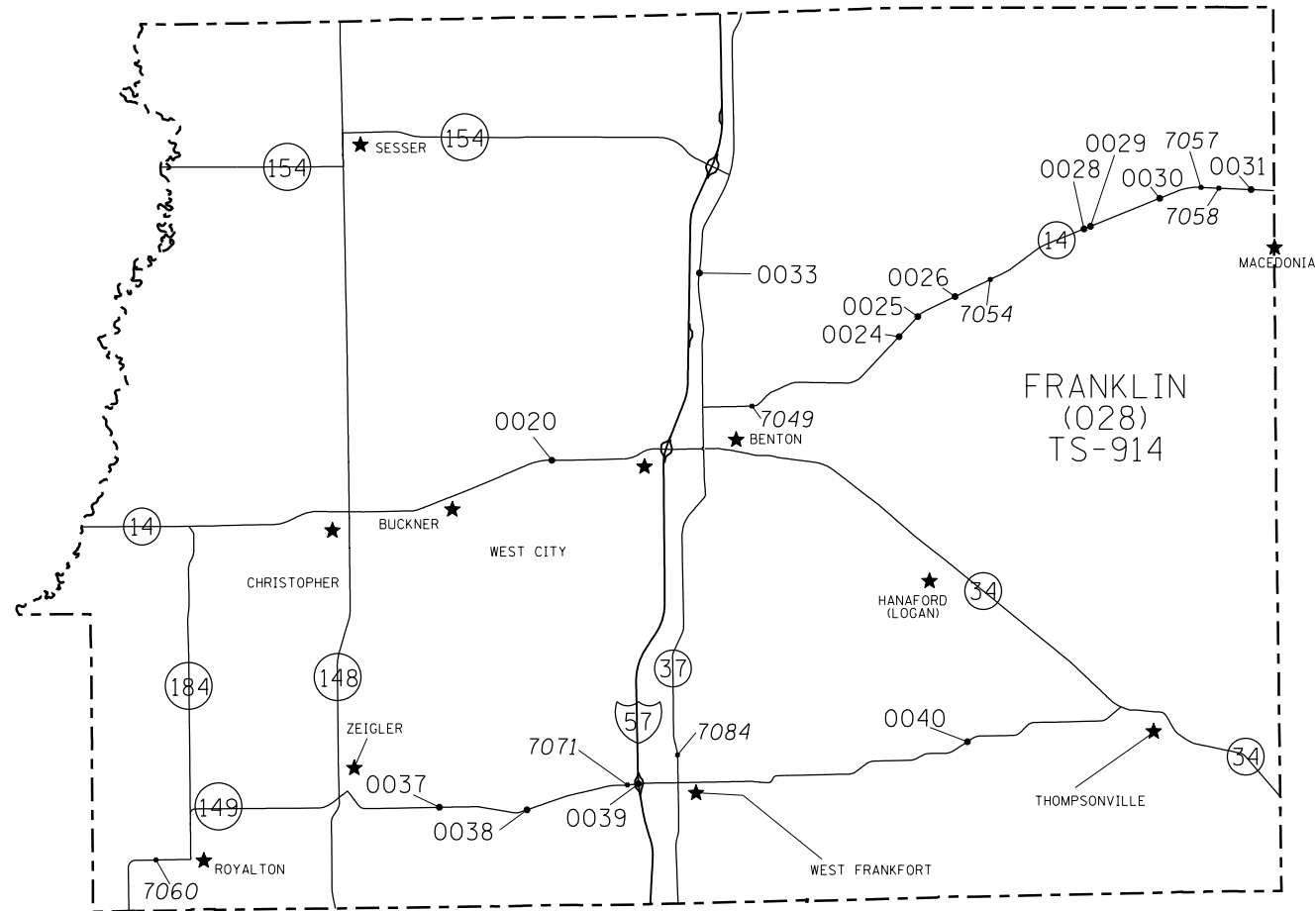
FILE NAME =	USER NAME = pritchettll	DESIGNED -	REVISED -	STATE OF ILLINOIS DEPARTMENT OF TRANSPORTATION	SEEDING SCHEDULE	F.A. RTE.	SECTION	COUNTY	TOTAL SHEETS	SHEET NO.
pw:\IL\084EBIDINTEG.illinois.gov\PIDOT\Documents\DOT Offices\District 9\Projects\78538\Drawings\CAD\Sheets\shite-cvr-soq.index.dwg		CHECKED -	REVISED -			••	••	•••	22	18
Default	PLOT SCALE = 100.0000' / in.	DATE -	REVISED -		SCALE:	SHEET	OF	SHEETS	STA.	TO STA.
	PLOT DATE = 10/19/2016									ILLINOIS FED. AID PROJECT
									CONTRACT NO. 78538	

SEEDING SCHEDULE

LOCATION STA TO STA	SEEDING, CLASS 2	SEEDING, CLASS 7	NITROGEN FERTILIZER NUTRIENT	PHOSPHOROU S FERTILIZER NUTRIENT	POTASSIUM FERTILIZER NUTRIENT	AGRICULTRAL GROUND LIMESTONE	TEMPORARY EROSION CONTROL SEEDING	PERIMETER EROSION BARRIER	TEMPORARY DITCH CHECKS	MULCH, MATHOD 2
	ACRE	ACRE	POUND	POUND	POUND	TON	POUND	FOOT	FOOT	ACRE
IL 14 (FRANKLIN COUNTY)										
SN 028-0030										
RT STA 528+28. TO STA 529+12.	0.03	0.03	6	3	3	0.1	6	84		0.06
LT STA 528+50. TO STA 529+34.	0.04	0.04	6	3	3	0.1	7	84		0.07
RT STA 531+16. TO STA 532+00.	0.03	0.03	6	3	3	0.1	7	84		0.07
LT STA 531+26. TO STA 532+10.	0.03	0.03	5	2	2	0.1	5	84		0.05
SN 028-7057										
RT STA 572+79. TO STA 573+63.	0.03	0.03	6	3	3	0.1	6	84		0.06
LT STA 575+54. TO STA 576+48.	0.04	0.04	6	3	3	0.1	7	84		0.07
SN 028-7058										
LT STA 594+29. TO STA 595+13.	0.06	0.06	10	5	5	0.1	12		20	0.12
RT STA 594+29. TO STA 595+13.	0.02	0.02	3	1	1	0.0	3	84		0.03
LT STA 596+88. TO STA 597+72.	0.05	0.05	9	4	4	0.1	10		20	0.10
RT STA 596+88. TO STA 597+72.	0.01	0.01	2	1	1	0.0	2	84		0.02
SN 028-0031										
LT STA 629+15. TO STA 629+99.	0.06	0.06	10	5	5	0.1	11		20	0.11
RT STA 629+22. TO STA 630+06.	0.03	0.03	5	3	3	0.1	6	84		0.06
LT STA 632+11. TO STA 632+95.	0.04	0.04	8	4	4	0.1	9	84		0.09
RT STA 632+17. TO STA 633+01.	0.04	0.04	6	3	3	0.1	7	84		0.07
MACEDONIA RD										
LT STA 650+94. TO STA 651+78.	0.02	0.02	4	2	2	0.0	4	84		0.04
LT STA 653+46. TO STA 654+30.	0.02	0.02	3	1	1	0.0	3	84		0.03
IL 149 (FRANKLIN COUNTY)										
SN 028-7060										
LT STA 183+62. TO STA 184+46.	0.03	0.03	5	2	2	0.1	5		20	0.05
RT STA 185+48. TO STA 186+32.	0.01	0.01	3	1	1	0.0	3	84		0.03
LT STA 186+21. TO STA 187+05.	0.02	0.02	3	1	1	0.0	3	84		0.03
SUB-TOTAL										
	0.67	0.67	120	60	60	1.3	134	1596	60	1.34
SUB-TOTAL										
	0.58	0.58	104	52	52	1.2	116	1260	80	1.16
PROJECT TOTAL										
	1.25	1.25	224	112	112	2.5	249	2856	140	2.49

- VARIOUS
- D9 GUARDRAIL END SECT FY17-1
- FRANKLIN & JEFFERSON

FILE NAME =	USER NAME = pritchettll	DESIGNED -	REVISED -	STATE OF ILLINOIS DEPARTMENT OF TRANSPORTATION	SEEDING SCHEDULE	F.A. RTE.	SECTION	COUNTY	TOTAL SHEETS	SHEET NO.
pw:\IL\084EBIDINTEG.illinois.gov\PWIDOT\Documents\DOT Offices\District 9\Projects\78538\Drawings\CAD\Sheets\shite-cvr-soq.index.dwg		CHECKED -	REVISED -			•	••	•••	22	19
Default	PLOT SCALE = 100.0000' / in.	DATE -	REVISED -		SCALE:	SHEET OF SHEETS STA. TO STA.		CONTRACT NO. 78538		
	PLOT DATE = 10/19/2016					ILLINOIS FED. AID PROJECT				



- VARIOUS
- D9 GUARDRAIL END SECT FY17-1
- FRANKLIN & JEFFERSON

FILE NAME =	USER NAME = pritchettll	DESIGNED -	REVISED -
pw:\IL\084EBIDINTEG\illinois.gov\PI\DOT\Documents\DOT Offices\District 9\Projects\78538\Drawings\CAD\Sheets\shite-cvr-soq-index.dwg		DRAWN -	REVISED -
Default	PLOT SCALE = 100.0000' / in.	CHECKED -	REVISED -
	PLOT DATE = 10/19/2016	DATE -	REVISED -

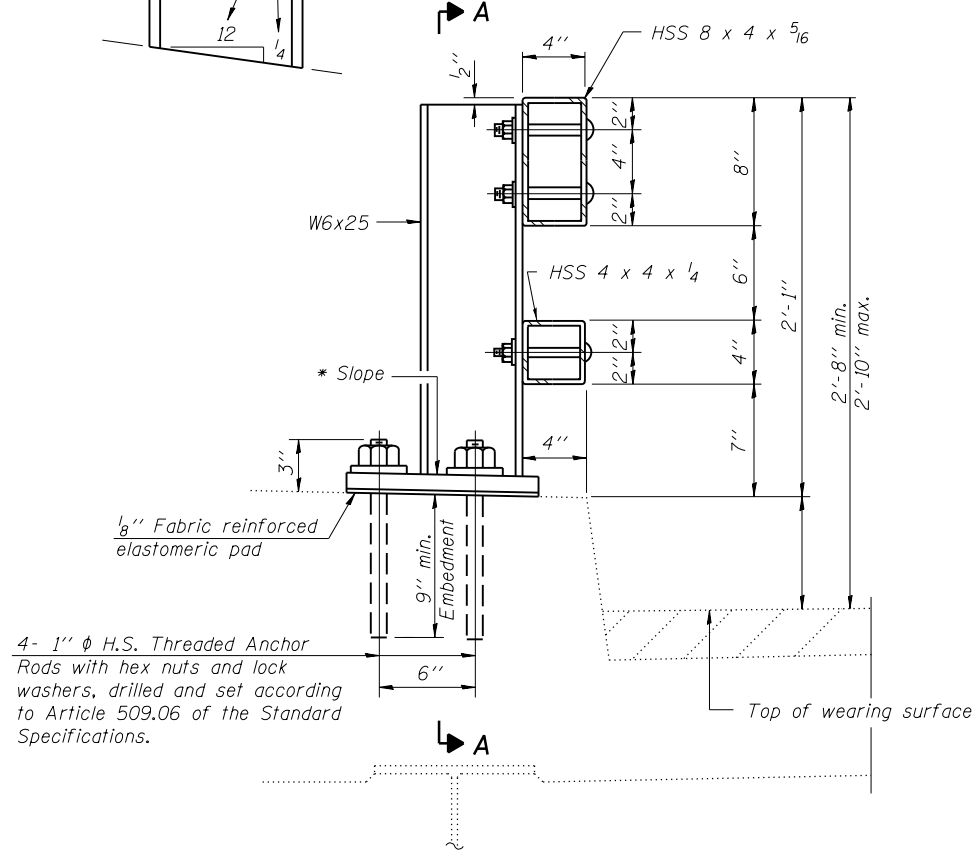
**STATE OF ILLINOIS
DEPARTMENT OF TRANSPORTATION**

STRUCTURE MAP

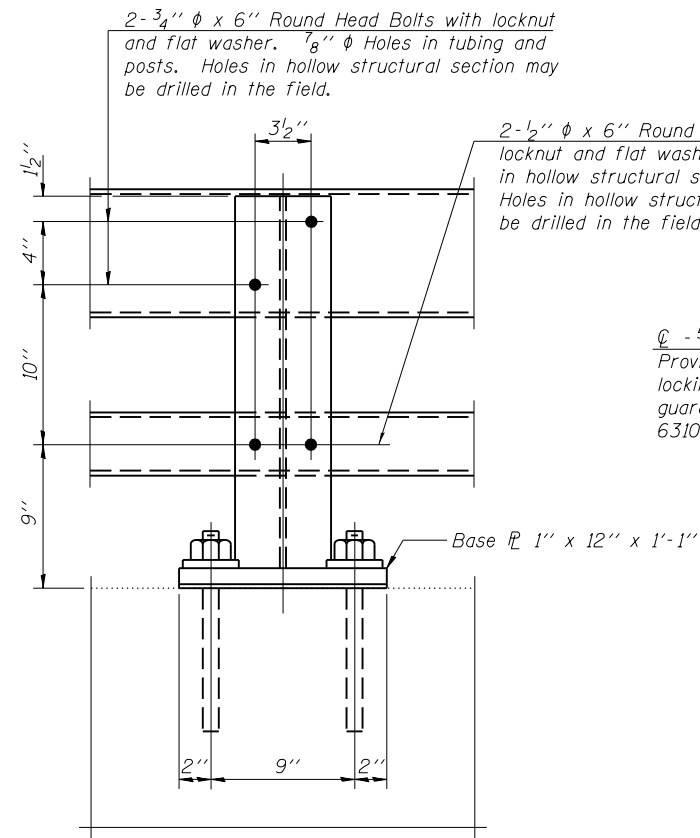
SCALE:	SHEET	OF	SHEETS	STA.	TO	STA.
--------	-------	----	--------	------	----	------

F.A. RTE.	SECTION	COUNTY	TOTAL SHEETS	SHEET NO.
•	••	•••	22	20
CONTRACT NO. 78538				
ILLINOIS FED. AID PROJECT				

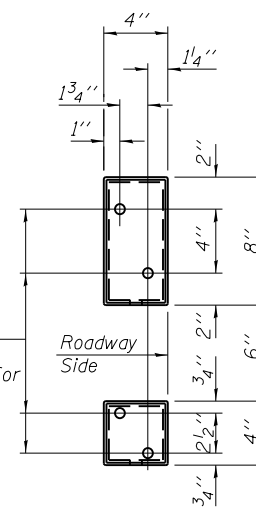
* Cut bottom end of post to curb slope.



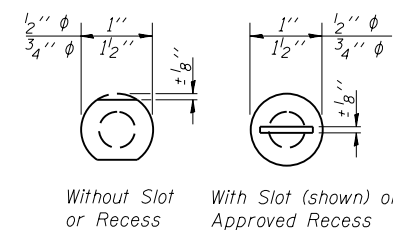
SECTION AT RAIL POST



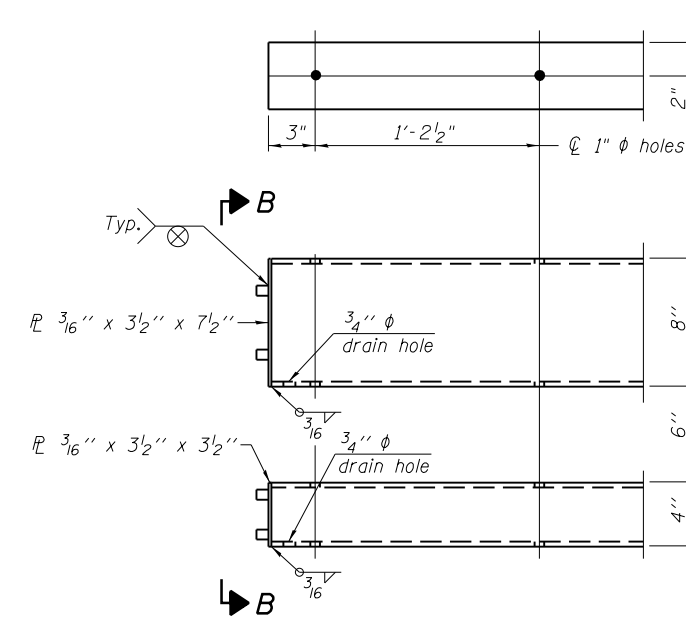
SECTION A-A



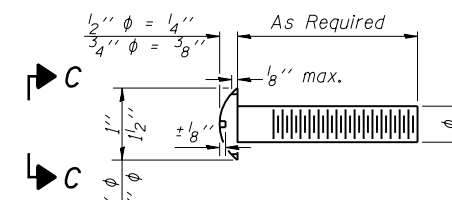
VIEW B-B



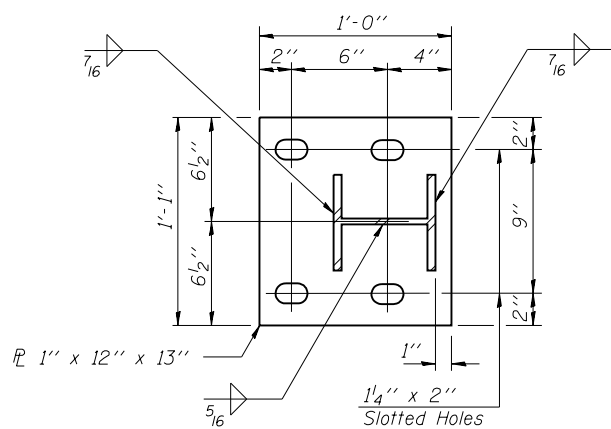
VIEW C-C



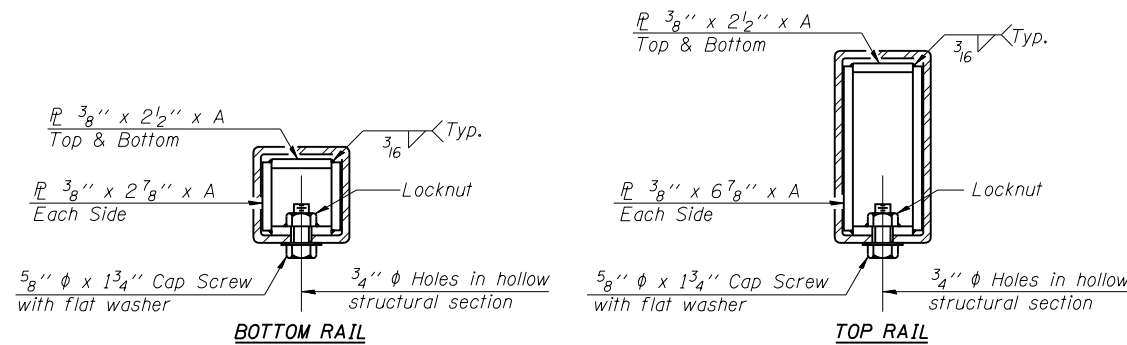
END OF RAIL DETAILS



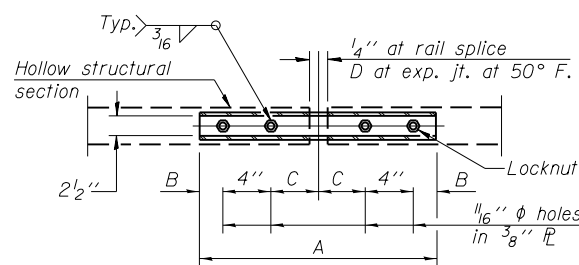
DETAIL OF 1/2" & 3/4" ROUND HEAD BOLTS



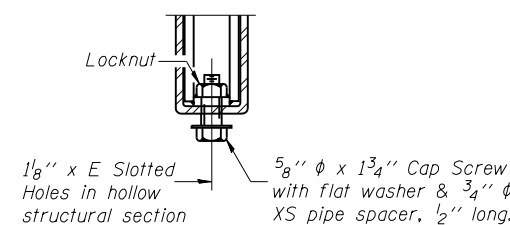
BASE PLATE DETAIL



SECTIONS AT RAIL SPLICE



PLAN-BOTT. SPLICE TYPICAL



RAIL SPLICE CONNECTION AT EXPANSION JT.

Notes:

Posts shall not be located closer than 1'-3" to an existing bridge expansion joint or end of bridge.

Steel Bridge Rail expansion joint shall be provided between any two (2) posts which span a bridge expansion joint. Bolts located at expansion joint shall be provided with locknuts and shall be tightened only to a point that will allow railing movement.

Provide one 1/8" and two 1/16" steel shims for 25% of the posts. Shims shall be similar to base plates in size and holes.

All steel rail elements shall be galvanized according to Article 509.05 of the Standard Specifications.

SPLICE DIMENSIONS

T	D	A	B	C	E
≤ 4"	2 1/2"	1'-8"	2"	4"	2 1/2"
> 4" ≤ 6 1/2"	3 3/4"	2'-0"	2 1/2"	5 1/2"	3 1/2"
> 6 1/2" ≤ 9"	5"	2'-4"	3 1/2"	6 1/2"	9"
> 9" ≤ 13"	7"	2'-10"	4 1/2"	8 1/2"	11"
Rail Splice	4"	1'-8"	2"	4"	—

T = Total movement at expansion joint as shown on the design plans.

BILL OF MATERIAL

Item	Unit	Quantity
Steel Railing, Type 2399	Foot	

- VARIOUS
- D9 GUARDRAIL END SECT FY17-1
- FRANKLIN & JEFFERSON

R-31

1-12-15

(6'-3" Maximum Post Spacing)

FILE NAME	USER NAME	DESIGNED	REVISED
pw\11084EBIDINTEG\Illinois.gov\PIWIDOT\Documents\DOT Offices\District 9\Projects\785\DRAWING\CAD\Sheets\shite-cvr-soq.index.dwg	pritchettll	-	-
		CHECKED	REVISIED
		DATE	REVISIED

STATE OF ILLINOIS
DEPARTMENT OF TRANSPORTATION

STEEL RAILING, TYPE 2399
STRUCTURE NO.

SCALE: SHEET OF SHEETS STA. TO STA.

F.A. RTE.	SECTION	COUNTY	TOTAL SHEETS	SHEET NO.
	••	•••	22	21
CONTRACT NO. 78538				

ILLINOIS FED. AID PROJECT

