

STATE OF ILLINOIS  
DEPARTMENT OF TRANSPORTATION  
DIVISION OF HIGHWAYS

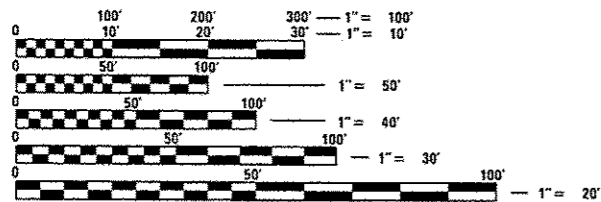
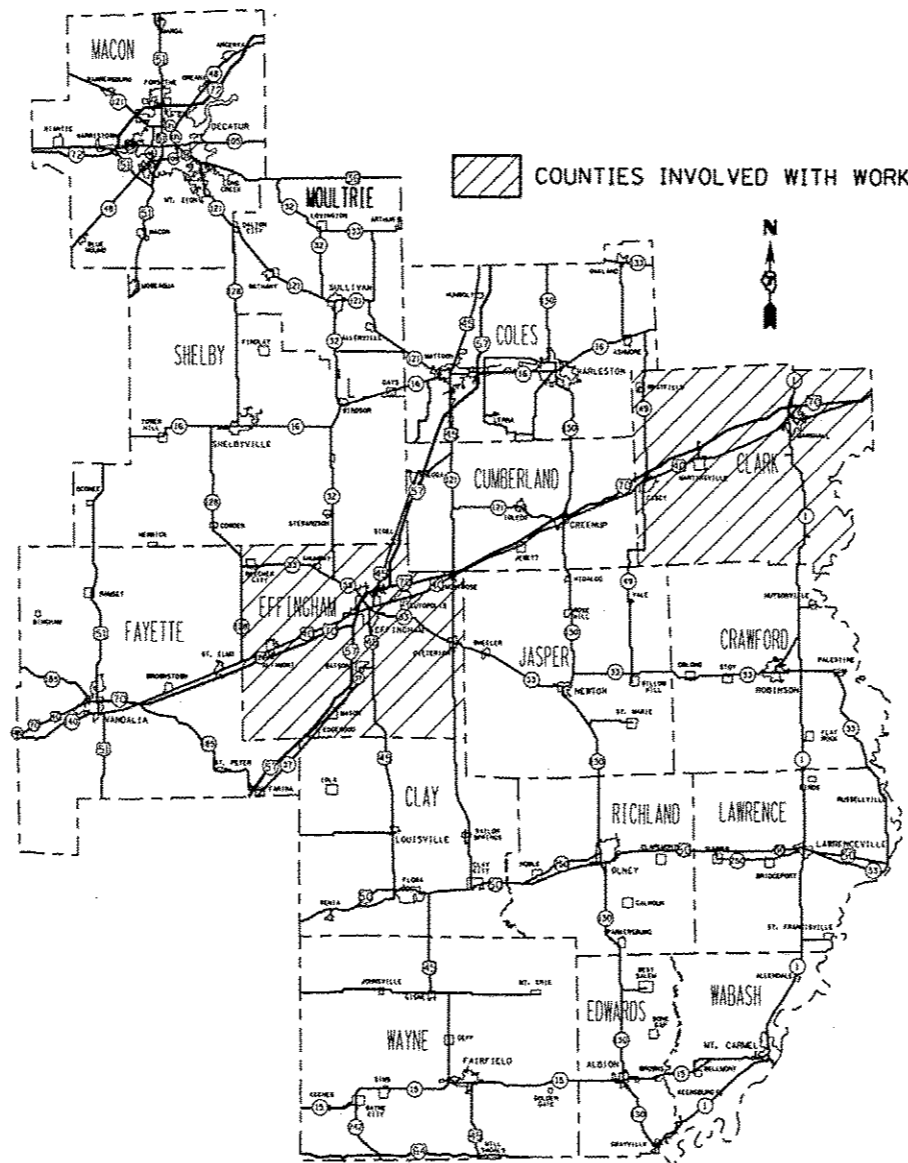
**PROPOSED  
HIGHWAY PLANS**

F.A.I. ROUTE 70 (I-70)  
SECTION D7 PATCHING 2017-2  
PATCHING  
EFFINGHAM & CLARK COUNTY  
C-97-064-16

FOR INDEX OF SHEETS, SEE SHEET NO. 2

F.A.I. RTE.	SECTION	COUNTY	TOTAL SHEETS	SHEET NO.
70	D7 BRIDGE PAINTING 2017-2		3	1
		ILLINOIS	CONTRACT NO. 74769	
*EFFINGHAM, CLARK				

D-97-033-16



FULL SIZE PLANS HAVE BEEN PREPARED USING STANDARD ENGINEERING SCALES. REDUCED SIZED PLANS WILL NOT CONFORM TO STANDARD SCALES. IN MAKING MEASUREMENTS ON REDUCED PLANS, THE ABOVE SCALES MAY BE USED.

J.U.L.I.E.  
JOINT UTILITY LOCATION INFORMATION FOR EXCAVATION  
1-800-892-0123  
OR 811

PROJECT ENGINEER: TOM RONAN  
PROJECT MANAGER: KALEB KNIERIM  
PHONE: (217)-342-8361  
CONTRACT NO. 74769

STATE OF ILLINOIS  
DEPARTMENT OF TRANSPORTATION

SUBMITTED OCTOBER 27, 2016  
Jeffrey M. South 100  
REGIONAL ENGINEER

Dec 9 2016  
Maureen M. Addis PE  
ENGINEER OF DESIGN AND ENVIRONMENT

Dec 9 2016  
David A. [Signature] 2  
DIRECTOR OF PROGRAM DEVELOPMENT

PRINTED BY THE AUTHORITY  
OF THE STATE OF ILLINOIS

## INDEX OF SHEETS

SHEET NO.	ITEM
1	COVER SHEET
2	INDEX OF SHEETS, HIGHWAY STANDARDS, GENERAL NOTES, & PATCHING SCHEDULE
3	SUMMARY OF QUANTITIES

THE FOLLOWING STANDARDS ARE A PART OF THESE PLANS AND ARE INCLUDED AFTER SHEET NO. 3 :

STD. NO.	DESCRIPTION
000001-06	STANDARD SYMBOLS, ABBREVIATIONS AND PATTERNS
001001-02	AREAS OF REINFORCEMENT BARS
001006	DECIMAL OF AN INCH AND OF A FOOT
420701-03	PAVEMENT WELDED WIRE REINFORCEMENT
442001-04	CLASS A PATCHES
442101-07	CLASS B PATCHES
701101-05	OFF-RD OPERATIONS, MULTI-LANE, 15-24' FROM PAVEMENT EDGE
701106-02	OFF-ROAD OPERATIONS, MULTILANE, MORE THAN 15' AWAY
701400-09	APPROACH TO LANE CLOSURE, FREEWAY/EXPRESSWAY
701401-10	LANE CLOSURE, FREEWAY/EXPRESSWAY
701411-09	LANE CLOSURE, MULTI-LANE, ENTRANCE OR EXIT RAMP
701901-06	TRAFFIC CONTROL DEVICES

## GENERAL NOTES

THIS SECTION SHALL BE CONSTRUCTED IN ACCORDANCE WITH THE PLANS; THE "STANDARD SPECIFICATIONS FOR ROAD AND BRIDGE CONSTRUCTION" ADOPTED APRIL 1, 2016; AND THE SPECIAL PROVISIONS INCLUDED IN THE PROPOSAL.

THIS PROJECT IS LOCATED ON INTERSTATE 70 IN EFFINGHAM AND CLARK COUNTIES. THE PROJECT STARTS AT MILE MARKERS 130 TO 137 FROM CASEY TO MARTINSVILLE AND AT MILE MARKERS 100 TO 102 IN EFFINGHAM COUNTY. THE WORK INCLUDED IN SECTION D7 PATCHING 2017-2 CONSISTS OF CLASS A AND CLASS B PAVEMENT PATCHING, TRAFFIC CONTROL AND ANY OTHER WORK NECESSARY TO COMPLETE THE SECTION.

THE ACTUAL LOCATIONS OF PAVEMENT PATCHING AND FINAL QUANTITIES SHALL BE DETERMINED BY THE ENGINEER IN THE FIELD.

### CLARK CO

I-70 PATCHING SCHEDULE	CLASS A PATCHES, TYPE I, 13"				TIE BARS 3/4"	PATCHING REINFORCEMENT	SAW CUTS
	SO YD	SO YD	SO YD	SO YD			
MP 130-137							
EBDL	4	7		33	12	44	178
EBPL				80	29	80	168
WBDL	36	68	77	289	197	469	1692
WBPL							
TOTALS	40	75	77	402	238	593	2038

### EFFINGHAM CO

I-70 PATCHING SCHEDULE	CLASS B PATCHES, TYPE II, 13"			CLASS B PATCHES, TYPE III, 13"			CLASS B PATCHES, TYPE IV, 13"			TIE BARS 3/4"	DOWEL BARS 1 1/2"	WELDED WIRE REINFORCEMENT	SAW CUTS
	SO YD	SO YD	SO YD	SO YD	SO YD	SO YD	EACH	EACH	SO YD				
MP 100-102													
EBDL	24	20	200				7	80	220			516	
EBPL	24							60				149	
WBDL		16						20	16			62	
WBPL	16							40				99	
TOTALS	64	36	200				7	200	236			825	

100 %  
STATE

100 %  
STATE

SUMMARY OF QUANTITIES

SUMMARY OF QUANTITIES

CODE NO	ITEM	UNIT	TOTAL QUANTITIES	CONSTRUCTION TYPE CODE	
				CLARK CO 0005	EFFINGHAM CO 0005
44200050	WELDED WIRE REINFORCEMENT	SO YD	236		236
44200608	CLASS A PATCHES, TYPE I, 13 INCH	SO YD	40	40	
44200610	CLASS A PATCHES, TYPE II, 13 INCH	SO YD	75	75	
44200612	CLASS A PATCHES, TYPE III, 13 INCH	SO YD	77	77	
44200614	CLASS A PATCHES, TYPE IV, 13 INCH	SO YD	402	402	
44201007	CLASS B PATCHES, TYPE II, 13 INCH	SO YD	64		64
44201011	CLASS B PATCHES, TYPE III, 13 INCH	SO YD	36		36
44201013	CLASS B PATCHES, TYPE IV, 13 INCH	SO YD	200		200
44201299	DOWEL BARS 1 1/2"	EACH	200		200
44213000	PATCHING REINFORCEMENT	SO YD	593	593	
44213200	SAW CUTS	FOOT	2863	2038	825
44213204	TIE BARS 3/4"	EACH	245	238	7
67100100	MOBILIZATION	LSUM	1	0.65	0.35

CODE NO	ITEM	UNIT	TOTAL QUANTITIES	CONSTRUCTION TYPE CODE	
				CLARK CO 0005	EFFINGHAM CO 0005
70100420	TRAFFIC CONTROL AND PROTECTION, STANDARD 701411	EACH	4	4	
70100800	TRAFFIC CONTROL AND PROTECTION, STANDARD 701401	LSUM	1	0.65	0.35
70103815	TRAFFIC CONTROL SURVEILLANCE	CAL DA	18	12	6
X7010410	SPEED DISPLAY TRAILER	CAL MO	3	2	1
X7015005	CHANGEABLE MESSAGE SIGN	CAL DA	56	28	28

B

S

\*EFFINGHAM, CLARK