

STATE OF ILLINOIS
DEPARTMENT OF TRANSPORTATION
DIVISION OF HIGHWAYS

**PROPOSED
BRIDGE PAINTING**

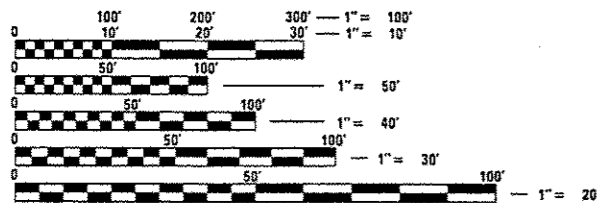
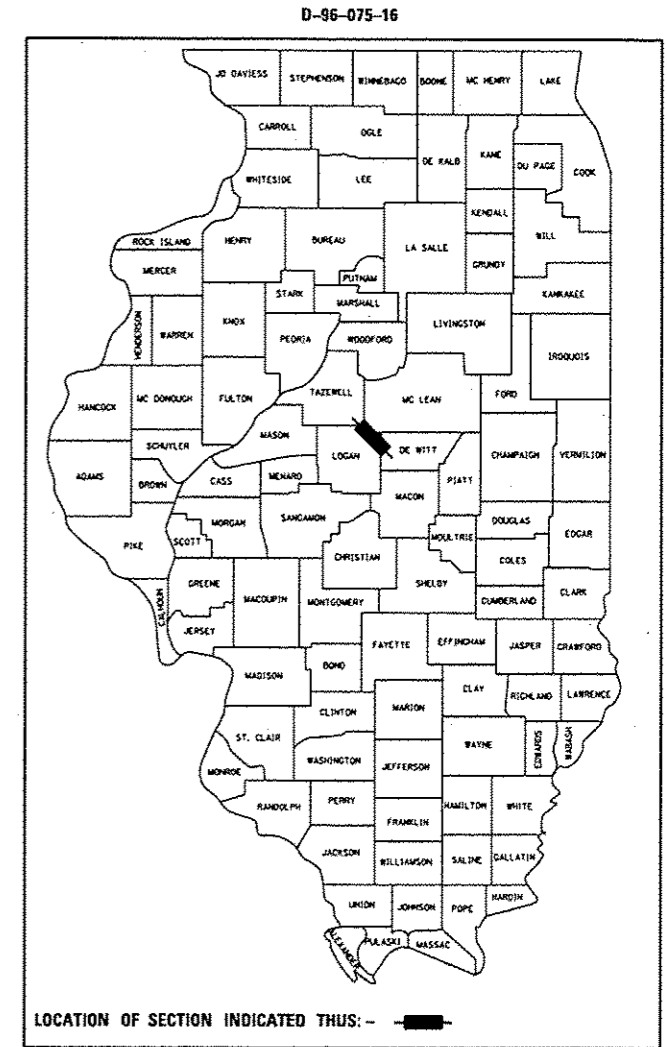
FAI 55 (I-55)
SECTION (54-6) BP

BRIDGE PAINTING
LOGAN COUNTY

C-96-075-16

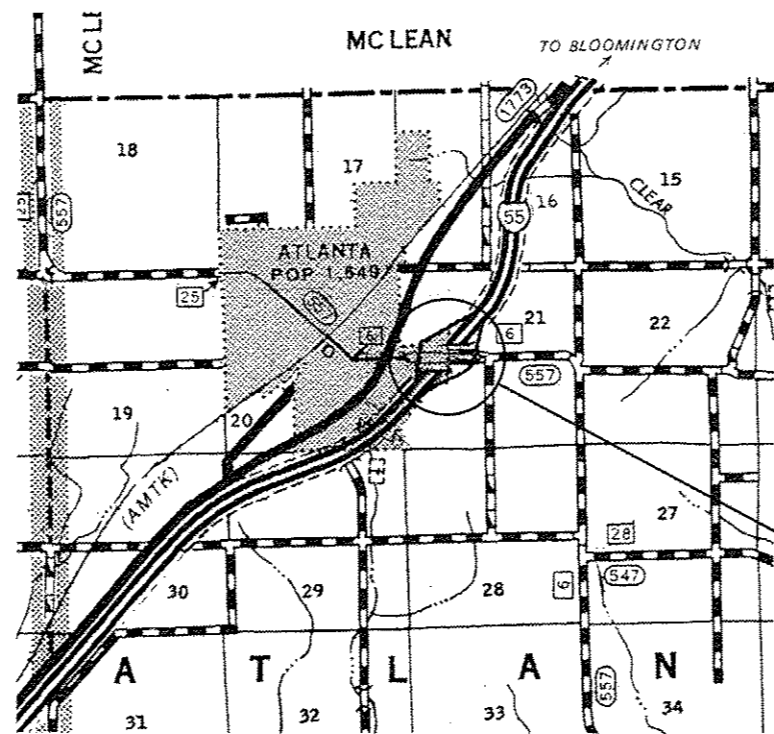
FOR INDEX OF SHEETS, SEE SHEET NO. 2

F.A.I. RTE.	SECTION	COUNTY	TOTAL SHEETS	SHEET NO.
55	(54-6) BP	LOGAN	6	1
		ILLINOIS	CONTRACT NO. 72J37	



FULL SIZE PLANS HAVE BEEN PREPARED USING STANDARD ENGINEERING SCALES. REDUCED SIZED PLANS WILL NOT CONFORM TO STANDARD SCALES. IN MAKING MEASUREMENTS ON REDUCED PLANS, THE ABOVE SCALES MAY BE USED.

J.U.L.I.E.
JOINT UTILITY LOCATION INFORMATION FOR EXCAVATION
1-800-892-0123
OR 811



PROJECT LOCATION - SN 054-0069
CH 6 OVER I-55
ATLANTA INTERCHANGE

BRIDGE MAINTENANCE ENGINEER - BRANDON DUDLEY (217) 785-9290
BRIDGE INSPECTION ENGINEER - DAVE COPENBARGER (217) 785-5306

GROSS LENGTH = NA
NET LENGTH = NA

CONTRACT NO. 72J37

STATE OF ILLINOIS
DEPARTMENT OF TRANSPORTATION
DIVISION OF HIGHWAYS

SUBMITTED 25 October 2016

[Signature] REGION FOUR ENGINEER

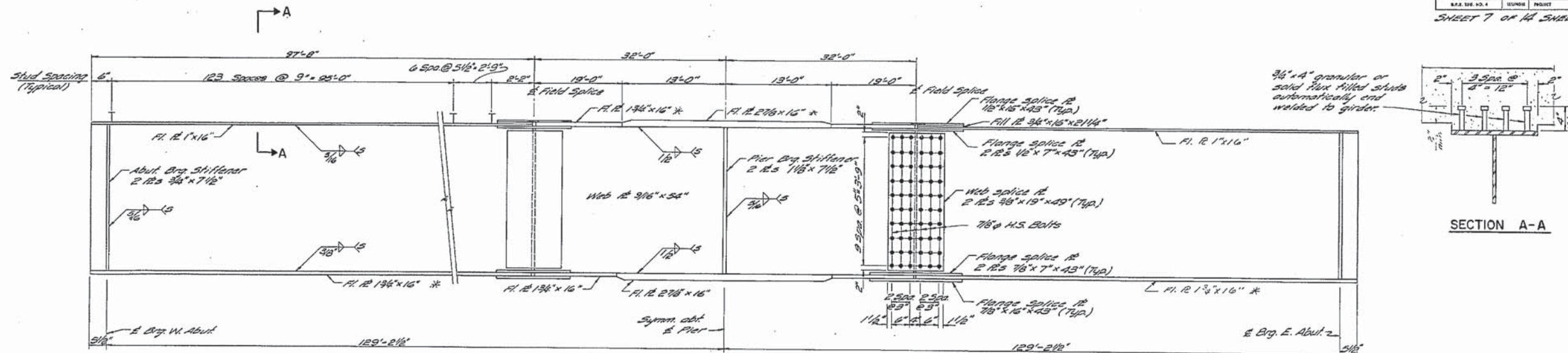
Dec 9 2016
[Signature] M. Addison, P.E.
ENGINEER OF DESIGN AND ENVIRONMENT

Dec 9 2016
[Signature] Chris Corman, P.E.
DIRECTOR OF HIGHWAYS, CHIEF ENGINEER

**PRINTED BY THE AUTHORITY
OF THE STATE OF ILLINOIS**

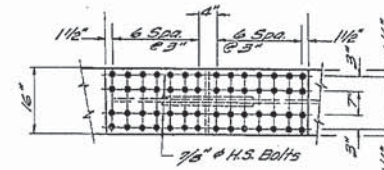
TOTAL SHEET NO.	FIG.	COUNTY	TOTAL SHEETS	SHEET NO.
PA-55	54	Logan	181	57
STA.	TO STA.			
R.F.A. SHE. NO. 4	SUMNO.	PROJECT		

SHEET 7 OF 14 SHEETS

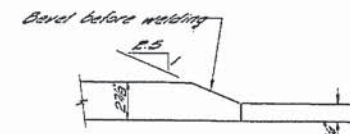


ELEVATION OF GIRDER
Typical All Girders

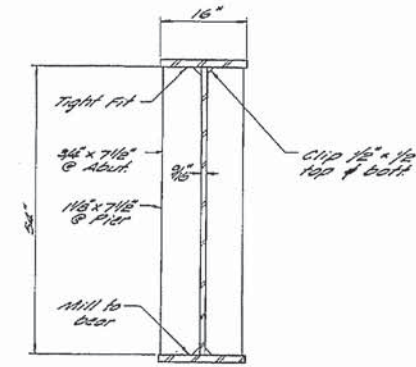
* Designates N.T.R.



FIELD FLANGE SPLICE



SHOP FLANGE SPLICE



TYPICAL SECTION

R GIRDER DETAILS
F.A.I. RT. 55 SEC. 54-6HB-1
LOGAN COUNTY
STATION 496 + 16.89

FILE NAME =	USER NAME = dudleybm	DESIGNED -	REVISED -	STATE OF ILLINOIS DEPARTMENT OF TRANSPORTATION	EXISTING PLANS SN 054-0069 (FOR INFORMATION ONLY)	F.A.I. RTE.	SECTION	COUNTY	TOTAL SHEETS	SHEET NO.
D:\OPERATIONS\Bridges\Bridgplans.CAD\72J37 - 0540069 print\plansheet.dgn	DRAWN -	REVISED -	55			(54-6) BP	LOGAN	6	4	
PLOT SCALE = 100.0000' / in.	CHECKED -	REVISED -	CONTRACT NO. 72J37							
Default	PLOT DATE = 10/20/2016	DATE -	REVISED -			SCALE:	SHEET OF SHEETS	STA. TO STA.	ILLINOIS FED. AID PROJECT	

PROJECT NO.	SECTION	COUNTY	DATE	SHEET NO.
FAI-55-58	54-6B	LOGAN	1/81	58
STA.	TO STA.			
16.89	496 + 16.89			

Sheet 8 of 14 Sheets

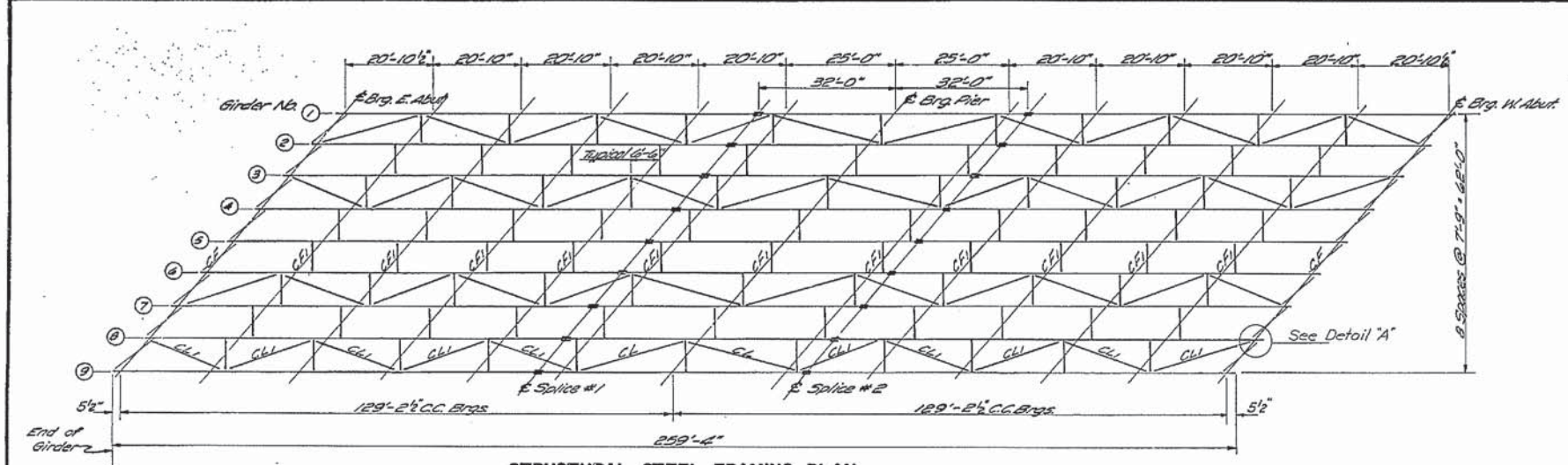


TABLE OF STRESSES

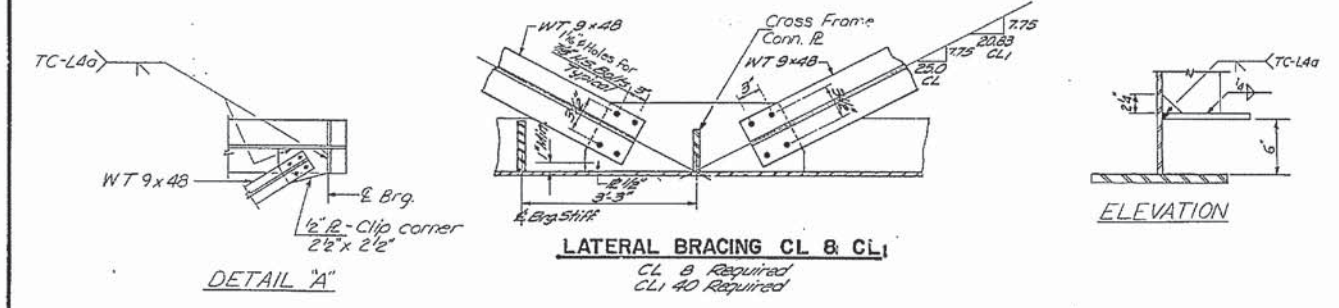
	Moment (Ft - Kips)		Reactions (Kips)	
	ABUT.	PIER	ABUT.	PIER
DL	1,299.1	-2,313.6	53.8	179.1
SIDL	401.3	-744.7	16.6	35.3
LL	1,156.1	-1,258.9	46.1	90.2
IMP	227.5	-249.6	9.1	17.7
TOTAL	3,084.0	-4,566.8	125.6	342.3

Shear (Kips)

	Shear (Kips)			
	ABUT.	Q25FT	Q50FT	PIER
SIDL	16.6	5.5	-5.3	-16.6
LL	46.1	30.5	-30.9	-43.7
IMP	9.1	6.0	-6.1	-8.6
TOTAL	71.8	42.0	-42.5	-68.9

GIRDER PROPERTIES

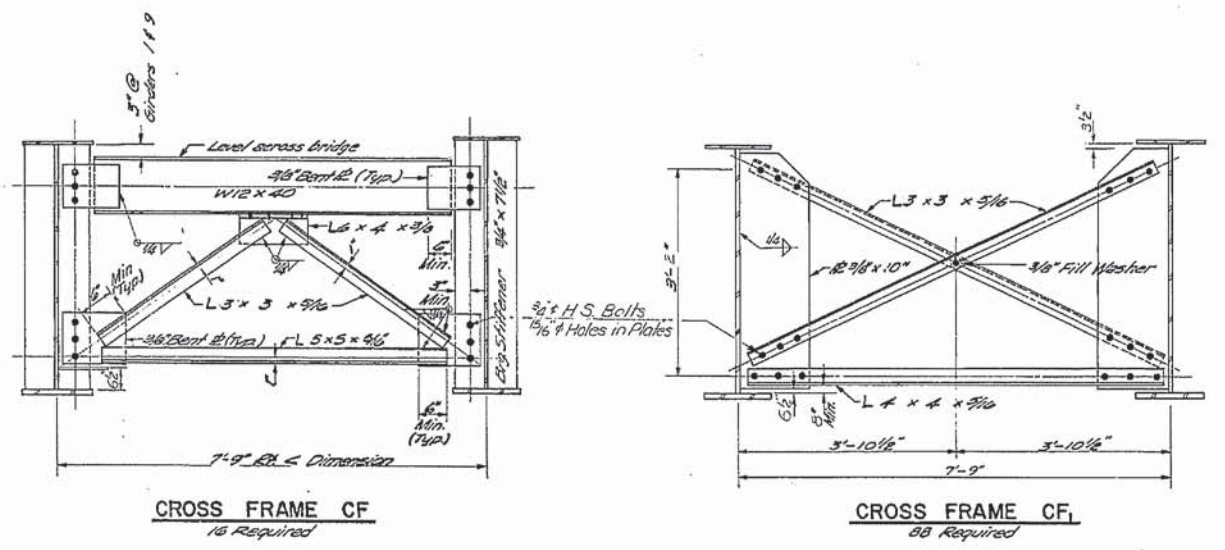
Steel Section @ Abut	Steel Section @ Pier
I _s 39,644.1	I _s 81,872.5
S _{Ts} 1,216.8	S 5
S _{Bs} 1,640.2	S _{Bc} 2,115.0
Composite Sect. (n=10)	
I _c 89,804.7	
S _{Tc} 4,294.4	
S _{Bc} 2,115.0	



Top of Web Elevation * (For Fabrication Only)

Location/ Elevation	Top of Web Elevation * (For Fabrication Only)								
	1	2	3	4	5	6	7	8	9
E. Brq. W. Abutment	734.694	734.861	734.986	735.111	735.236	735.311	734.986	734.861	734.694
E. Splice # 1	734.902	735.069	735.194	735.319	735.444	735.319	735.194	735.069	734.902
E. Brq. Pier	734.902	735.069	735.194	735.319	735.444	735.319	735.194	735.069	734.902
E. Splice # 2	734.902	735.069	735.194	735.319	735.444	735.319	735.194	735.069	734.902
E. Brq. E. Abutment	734.694	734.861	734.986	735.111	735.236	735.311	734.986	734.861	734.694

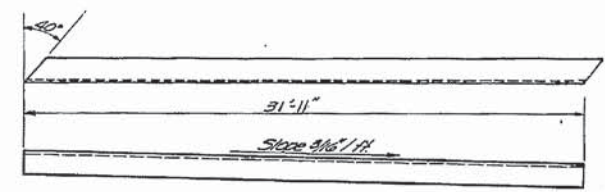
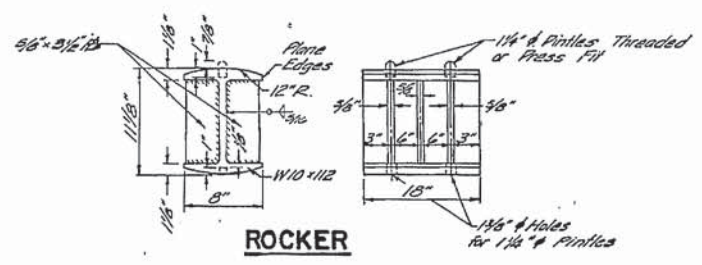
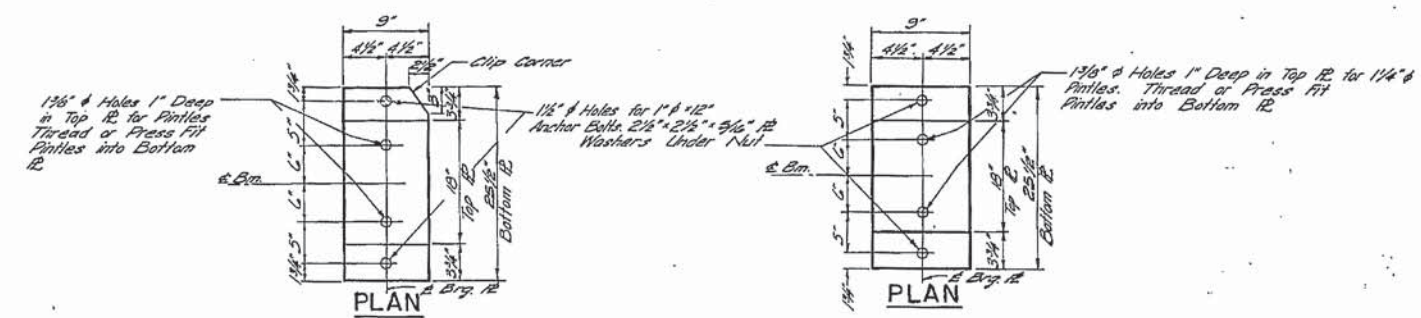
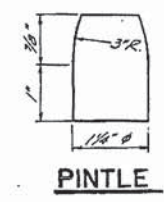
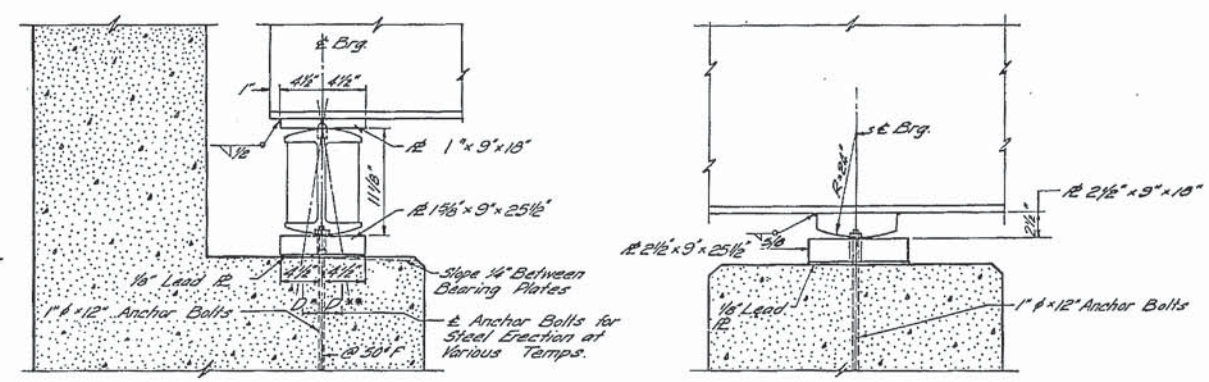
* Flange & Splice @ Thickness Must Be Added To Get Elev. @ Top of Steel



Note: Hardened washers shall be required over holes in bent plates and gusset plates.

FRAMING PLAN
 FAI. RT. 55 SEC. 54-6HB-1
 LOGAN COUNTY
 STATION 496 + 16.89

Revised 4-9-76 S.Y.K.



NOTE: The roadway guard angles shall be fabricated to fit the roadway. All surfaces of the guard angle shall receive two (2) shop coats of red lead paint except for surfaces in contact with concrete. These surfaces shall not be painted.

NOTES FOR SETTING OF ANCHOR BOLTS AT EXPANSION BEARINGS:

a. D' (Side of brg. away from fixed brg.)
D'' = 1/8" per each 100' of Expansion for every 15" fall below the normal temp. of 50°F
D''' (Side of brg. toward fixed brg.)
D'''' = 1/8" per each 100' of Expansion for every 15" rise above the normal temp. of 50°F

b. After beams have been erected and dimensions D' & D''' determined, holes shall be drilled and anchor bolts shall be grouted in place. All fixed anchor bolts may be built into the masonry.

Revised 4-9-76 S.Y.K.

BEARINGS AND GUARD ANGLE
F.A.I. RT. 55 SEC. 54-6HB-1
LOGAN COUNTY
STATION 496+16.89

STATE OF ILLINOIS
DEPARTMENT OF TRANSPORTATION

EXISTING PLANS SN 054-0069
(FOR INFORMATION ONLY)

FILE NAME =	USER NAME = dudleybm	DESIGNED -	REVISED -
D:\OPERATIONS\Bridges\Bridgplans.CAD\7237 - 0540069.plt\plansheet.dgn	J37 - 0540069.plt\plansheet.dgn	DRAWN -	REVISED -
Default	PLOT SCALE = 100.0000' / in.	CHECKED -	REVISED -
	PLOT DATE = 10/28/2016	DATE -	REVISED -

F.A.I. RTE.	SECTION	COUNTY	TOTAL SHEETS	SHEET NO.
55	(54-6) BP	LOGAN	6	6
CONTRACT NO. 72J37				
[ILLINOIS] FED. AID PROJECT				