

STATE OF ILLINOIS
DEPARTMENT OF TRANSPORTATION
DIVISION OF HIGHWAYS

PROPOSED HIGHWAY PLANS

FAI 55 (I-55)
SECTION D6 WEED SPRAYING 2017
MACOUPIN & MONTGOMERY COUNTY

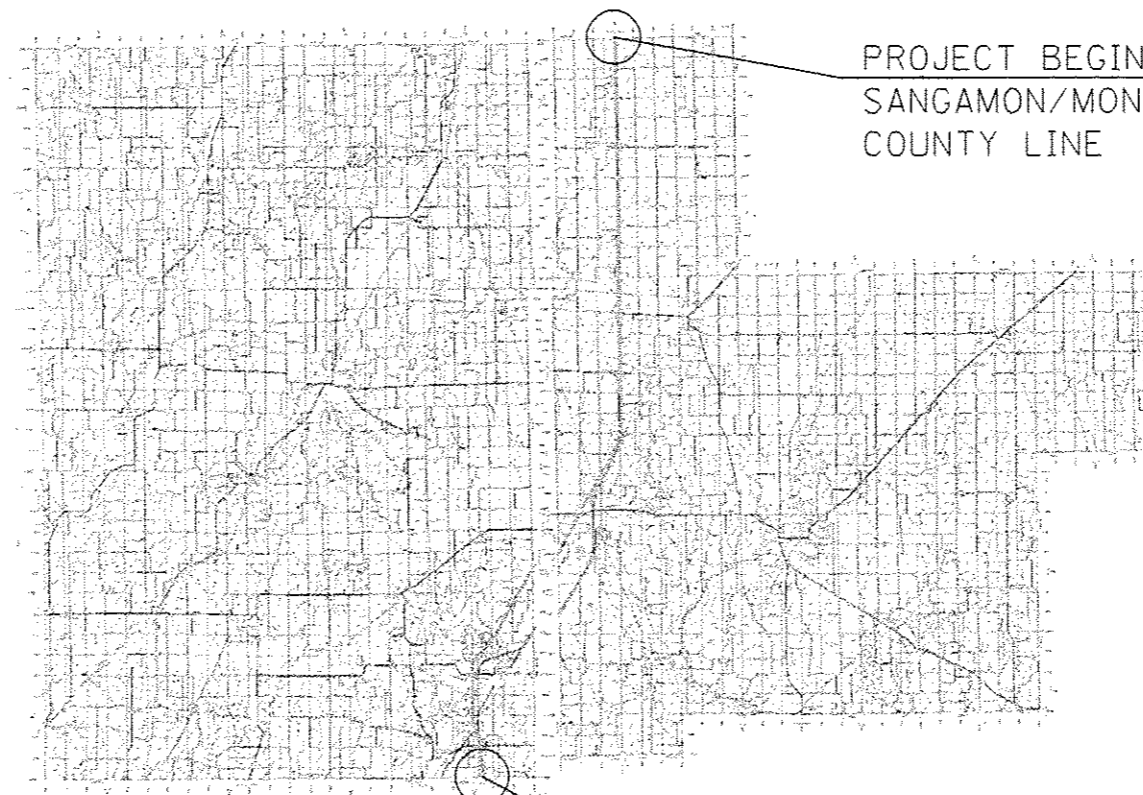
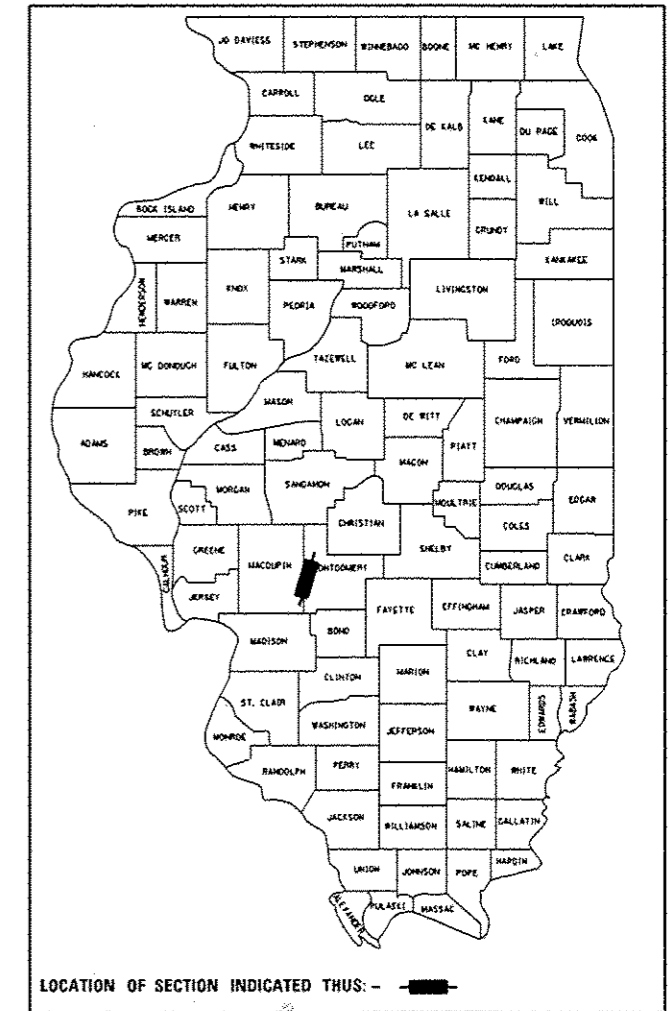
C-96-002-17

F.A.I. RTE.	SECTION	COUNTY	TOTAL SHEETS	SHEET NO.
55	D6 WEED SPRAYING 2017	ILLINOIS	5	1

CONTRACT NO. 72J43

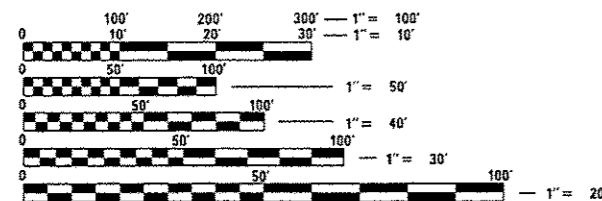
D-96-002-17

FOR INDEX OF SHEETS, SEE SHEET NO. 2



PROJECT BEGINS:
SANGAMON/MONTGOMERY
COUNTY LINE

PROJECT ENDS:
MACOUPIN/MADISON
COUNTY LINE



FULL SIZE PLANS HAVE BEEN PREPARED USING STANDARD ENGINEERING SCALES. REDUCED SIZED PLANS WILL NOT CONFORM TO STANDARD SCALES. IN MAKING MEASUREMENTS ON REDUCED PLANS, THE ABOVE SCALES MAY BE USED.

J.U.L.I.E.
JOINT UTILITY LOCATION INFORMATION FOR EXCAVATION
1-800-892-0123
OR 811

PROJECT ENGINEER: MIKE IRWIN 217.524.7765
PROJECT MANAGER: MIKE STAAB 217.494.4167

CONTRACT NO. 72J43

STATE OF ILLINOIS
DEPARTMENT OF TRANSPORTATION
DIVISION OF HIGHWAYS

SUBMITTED *17 October 2016*

[Signature]
REGION FOUR ENGINEER

Dec 9 2016
Maureen M. Addis, P.E.
ENGINEER OF DESIGN AND ENVIRONMENT

Dec 9 2016
Amer Osman Pasha
DIRECTOR OF HIGHWAYS, CHIEF ENGINEER

PRINTED BY THE AUTHORITY
OF THE STATE OF ILLINOIS

- INDEX OF SHEETS
- 1 COVER SHEET
 - 2 INDEX OF SHEETS AND SUMMARY OF QUANTITIES
 - 3-4 SCHEDULE OF QUANTITIES
 - 5 HERBICIDE DOSAGE CHART

SUMMARY OF QUANTITIES				0-02062-6001 100% STATE ROADWAY	
CODE NO.	ITEM	UNIT	TOTAL QUANTITY	0031	
				RURAL	
67100100	MOBILIZATION	LSUM	1	0.5	0.5
X0325947	MILESTONE VM	GALLON	51	25.5	25.5

STANDARDS

- 701001-02 OFF-ROAD OPERATIONS, 2L, 2W MORE THAN 15' AWAY
- 701006-05 OFF-ROAD OPERATIONS, 2L, 2W, 15' TO 24" FROM PAVEMENT EDGE
- 701011-04 OFF-ROAD MOVING OPERATIONS, 2L, 2W, DAY ONLY
- 701101-05 OFF-ROAD OPERATIONS, MULTILANE, 15' TO 24" FROM PAVEMENT EDGE
- 701106-02 OFF-ROAD OPERATIONS, MULTILANE, MORE THAN 15' AWAY
- 701301-04 LANE CLOSURE, 2L, 2W, SHORT TIME OPERATIONS
- 701311-03 LANE CLOSURE, 2L, 2W, MOVING OPERATIONS, DAY ONLY
- 701426-09 LANE CLOSURE, MULTILANE, INTERMITTENT OR MOVING OPERATIONS FOR SPEEDS \geq 45 MPH
- 701901-06 TRAFFIC CONTROL DEVICES

**STATE OF ILLINOIS
DEPARTMENT OF TRANSPORTATION
DIVISION OF HIGHWAYS
DISTRICT 6**

EXAMINED September 12, 2016
John C. Williamson
ENGINEER OF OPERATIONS

EXAMINED September 9, 2016
Ron Chambers
ENGINEER OF PROJECT IMPLEMENTATION

EXAMINED October 14, 2016
Jeff P. Meyer
ENGINEER OF PROGRAM DEVELOPMENT

• MACOUPIN/MONTGOMERY

FILE NAME *	USER NAME * branhanna	DESIGNED -	REVISED -	STATE OF ILLINOIS DEPARTMENT OF TRANSPORTATION	GENERAL NOTES SUMMARY OF QUANTITIES			F.A.I. RTE.	SECTION	COUNTY	TOTAL SHEETS	SHEET NO.
D:\projects\7243 05 Weed Spraying 2017	ISS 172 WEED SPRAY.dgn	DRAWN -	REVISED -					55	06 WEED SPRAYING 2017	*	5	2
Defaults	PLOT SCALE * 2,0000 1/1 in.	CHECKED -	REVISED -		SCALE: SHEET OF SHEETS STA. TO STA.			CONTRACT NO. 7243				
	PLOT DATE * 10/17/2016	DATE -	REVISED -		ILLINOIS FED. AID PROJECT							

I-55 MAINLINE

LOCATION	FROM	TO	ACREAGE
I-55 SB OUTSIDE SHOULDER	SANGAMON COUNTY LINE	FARMERSVILLE EXIT RAMP	28.50
I-55 SB INSIDE MEDIAN	SANGAMON COUNTY LINE	FARMERSVILLE OVERPASS	44.50
I-55 NB OUTSIDE SHOULDER	FARMERSVILLE ON RAMP	SANGAMON COUNTY LINE	30.25
I-55 SB OUTSIDE SHOULDER	FARMERSVILLE ON RAMP	RAYMOND EXIT RAMP	45.25
I-55 SB INSIDE MEDIAN	FARMERSVILLE OVERPASS	RAYMOND OVERPASS	71.15
I55 NB OUTSIDE SHOULDER	RAYMOND ON RAMP	FARMERSVILLE EXIT RAMP	52.00
I55 SB OUTSIDE SHOULDER	RAYMOND ON RAMP	CARLINVILLE EXIT RAMP	9.15
I55 SB INSIDE MEDIAN	RAYMOND OVERPASS	CARLINVILLE OVERPASS	21.25
I55 NB OUTSIDE SHOULDER	CARLINVILLE ON RAMP	RAYMOND EXIT RAMP	14.00
I55 SB OUTSIDE SHOULDER	CARLINVILLE ON RAMP	LITCHFIELD EXIT RAMP	53.00
I55 SB INSIDE MEDIAN	CARLINVILLE OVERPASS	LITCHFIELD OVERPASS	69.00
I55 NB OUTSIDE SHOULDER	LITCHFIELD ON RAMP	CARLINVILLE EXIT RAMP	49.00
I55 SB OUTSIDE SHOULDER	LITCHFIELD ON RAMP	MT OLIVE OFF RAMP	51.91
I55 SB/NB MEDIAN	LITCHFIELD OVERPASS	MT OLIVE OVERPASS	62.10
I55 NB OUTSIDE SHOULDER	MT OLIVE ON RAMP	LITCHFIELD EXIT RAMP	45.80
I55 SB OUTSIDE SHOULDER	MT OLIVE ON RAMP	STAUNTON OFF RAMP	45.80
I55 SB/NB MEDIAN	MT OLIVE OVERPASS	STAUNTON OVERPASS	28.16
I55 NB OUTSIDE SHOULDER	STAUNTON ON RAMP	MT OLIVE OFF RAMP	21.20
I55 SB OUTSIDE SHOULDER	STAUNTON ON RAMP	MADISON COUNTY LINE	6.75
I55 SB/NB MEDIAN	STAUNTON OVERPASS	MADISON COUNTY LINE	13.00
I55 NB OUTSIDE SHOULDER	MADISON COUNTY LINE	STAUNTON OFF RAMP	7.00
TOTAL ACREAGE =			768.77

• MACOUPIN/MONTGOMERY

FILE NAME *	USER NAME * branhans	DESIGNED -	REVISED -	STATE OF ILLINOIS DEPARTMENT OF TRANSPORTATION	SCHEDULE OF QUANTITIES	F.A.I. RTE.	SECTION	COUNTY	TOTAL SHEETS	SHEET NO.	
C:\projects\72143 06 Weed Spraying 2017	I55 172 WEED SPRAY.dgn	DRAWN -	REVISED -			55	06 WEED SPRAYING 2017		5	3	
Default	PLOT SCALE * 2.0000 "/ in.	CHECKED -	REVISED -			CONTRACT NO. 721J43					
	PLOT DATE * 9/9/2016	DATE -	REVISED -			SCALE:	SHEET	OF	SHEETS	STA.	TO

ILLINOIS FED. AID PROJECT

155 - INFIELDS		
FARMERSVILLE		ACREAGE
SB OFF RAMP WEST SIDE	(NW QUADRANT)	6.00
SB OFF RAMP WEST SIDE	(NW QUADRANT)	4.50
SB OFF RAMP WEST SIDE	(NW QUADRANT)	7.15
NB OFF RAMP EAST SIDE	(NE QUADRANT)	4.65
NB OFF RAMP EAST SIDE	(NE QUADRANT)	5.00
NB OFF RAMP EAST SIDE	(NE QUADRANT)	9.50
SUBTOTAL ACREAGE =		36.80
RAYMOND		
SB OFF RAMP	(NW QUADRANT)	17.00
SB ON RAMP	(SW QUADRANT)	18.00
SB ON RAMP	(NE QUADRANT)	13.65
NB ON RAMP	(SE QUADRANT)	13.50
SUBTOTAL ACREAGE =		62.15
CARLINVILLE		
SB OFF RAMP	(NW QUADRANT)	14.80
SB ON RAMP	(SW QUADRANT)	14.70
SB ON RAMP	(NE QUADRANT)	15.90
NB OFF RAMP	(SE QUADRANT)	14.75
SUBTOTAL ACREAGE =		60.15
LITCHFIELD		
SB OFF RAMP	(NW QUADRANT)	22.50
SB ON RAMP	(SW QUADRANT)	9.20
SB ON RAMP	(NE QUADRANT)	23.50
NB OFF RAMP	(SE QUADRANT)	6.90
SUBTOTAL ACREAGE =		62.10
MT OLIVE		
SB OFF RAMP	(NW QUADRANT)	12.50
SB ON RAMP	(SW QUADRANT)	8.90
SB ON RAMP	(NE QUADRANT)	7.10
NB OFF RAMP	(SE QUADRANT)	8.30
SUBTOTAL ACREAGE =		36.80
STAUNTON		
SB OFF RAMP	(NW QUADRANT)	11.80
SB ON RAMP	(SW QUADRANT)	13.70
NB ON RAMP	(NE QUADRANT)	16.55
NB OFF RAMP	(SE QUADRANT)	16.00
SUBTOTAL ACREAGE =		58.05
TOTAL ACREAGE =		316.05
TOTALS (6 OZ PER ACRE / 128 OZ PER GALLON)		GALLONS
INFIELD TOTAL ACRES =	316.05	14.81
MAINLINE TOTAL ACREAGE =	768.77	36.04
TOTAL GALLONS NEEDED =		50.85

• MACOUPIN/MONTGOMERY

FILE NAME *	USER NAME * branhama	DESIGNED -	REVISED -	STATE OF ILLINOIS DEPARTMENT OF TRANSPORTATION	SCHEDULE OF QUANTITIES				F.A.I. RTE.	SECTION	COUNTY	TOTAL SHEETS	SHEET NO.
C:\projects\72J43 06 Weed Spraying 2017	155 172 WEED SPRAY.dgn	DRAWN -	REVISED -						55	06 WEED SPRAYING 2017	*	5	4
Default	PLOT SCALE * 2.0000 "/ in.	CHECKED -	REVISED -		SCALE:	SHEET	OF	SHEETS	STA.	TO STA.	CONTRACT NO. 72J43		
	PLOT DATE * 10/17/2016	DATE -	REVISED -		ILLINOIS FED. AID PROJECT								

HERBICIDE DOSAGE CHART				
WATER (GALLONS)	MILESTONE VM (OUNCES)	NON-IONIC SURFACTANT (PINTS)	DRIFT CONTROL (OUNCES)	ACRES OF R.O.W.
40	6	0.8	3.2	1
50	8.75	1	4	1.25
100	17.5	2	8	2.5
200	35	4	16	5
300	52.5	6	24	7.5
400	70	8	32	10
500	87.5	10	40	12.5
600	106	12	48	15
700	122.6	14	56	17.5
800	140	16	68	20
900	157.5	18	72	22.5
1000	175	20	80	25
1100	192.5	22	88	27.5
1200	210	24	96	30
1300	227.5	26	112	32.5
1400	245	28	114	35
1500	262.5	30	120	37.5

**FOR CONTRACTORS
INFORMATION ONLY**

**BASED ON 6 OUNCES OF MILESTONE VM FOR EACH ACRE
BASED ON 8 OUNCES OF DRIFT CONTROL AGENT PER 100 ACRES
BASED ON 2 PINTS OF NON-IONIC SURFACTANT FOR EACH 100 GALLONS OF WATER**