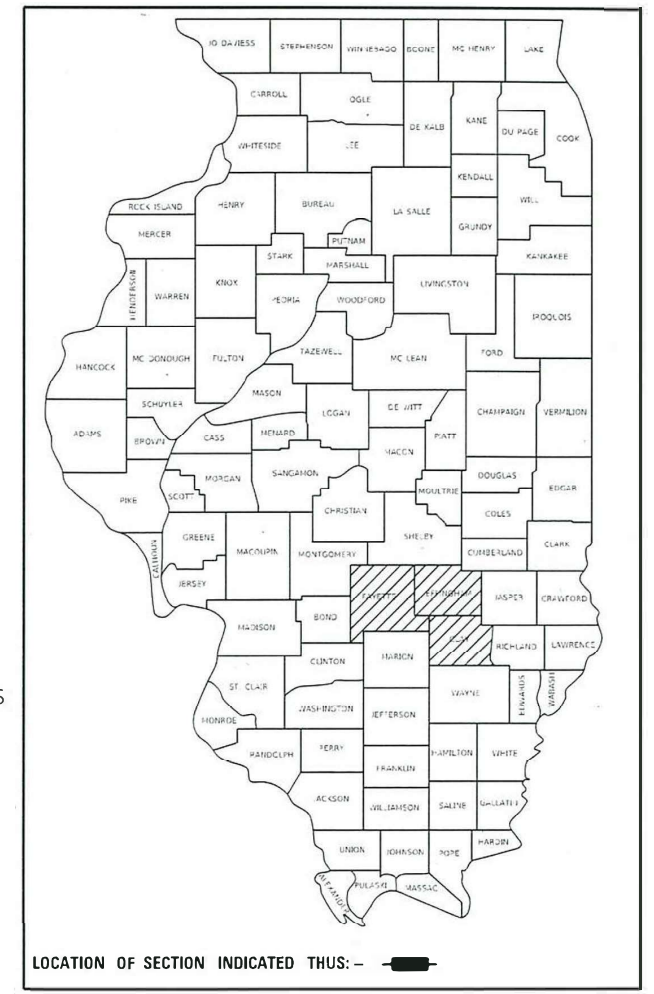


STATE OF ILLINOIS
DEPARTMENT OF TRANSPORTATION

F.A.J. RTE.	SECTION	COUNTY	TOTAL SHEETS	SHEET NO.
57&70	D7 WEED SPRAYING 2023-3	EFFINGHAM, CLAY & FAYETTE	8	1

CONTRACT NO. 74B83

D-97-024-23

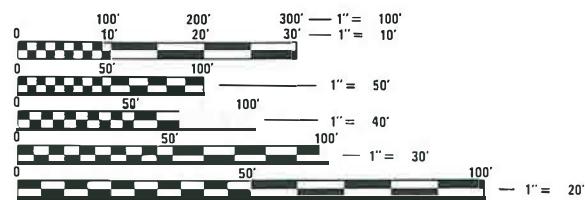
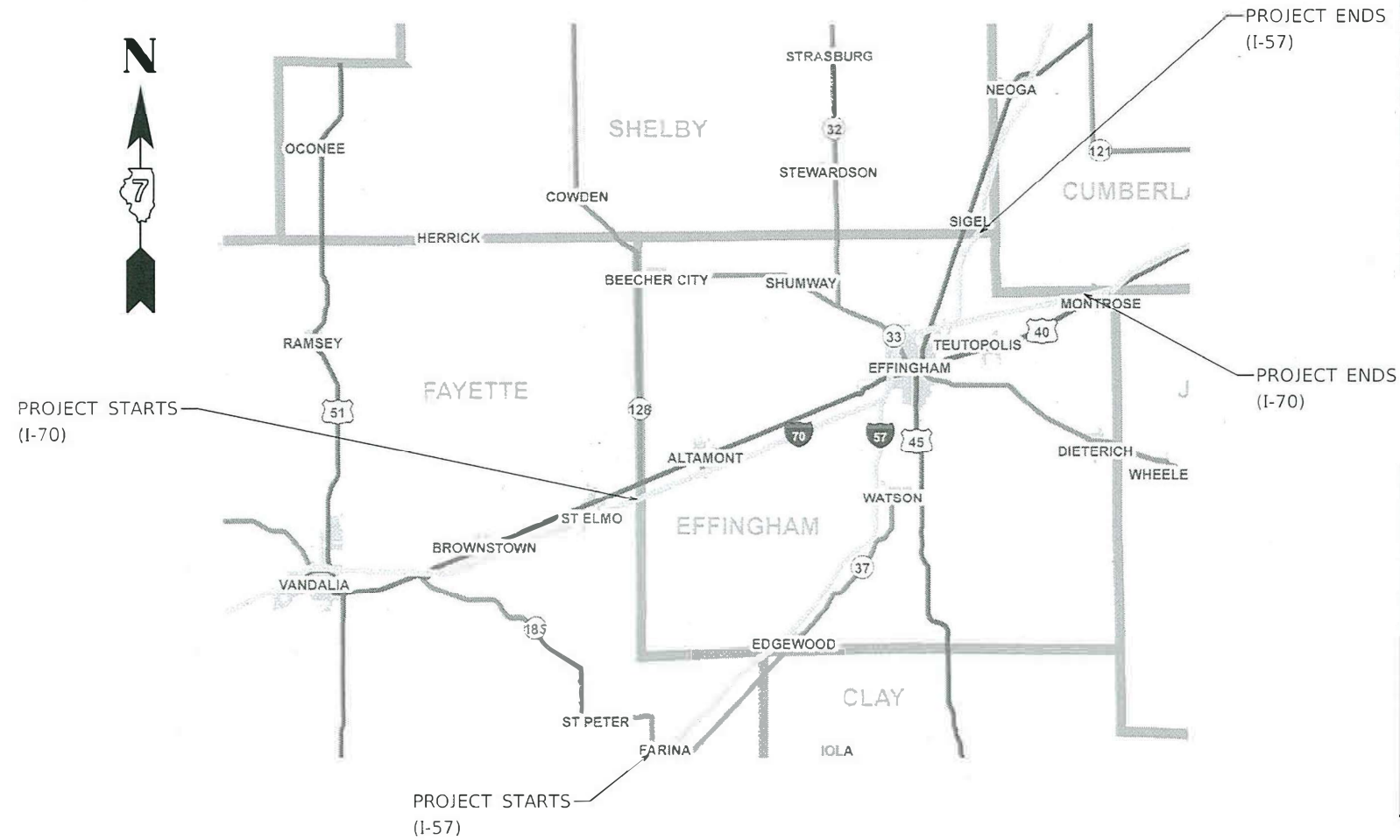


PROPOSED HIGHWAY PLANS

FAI ROUTE 57 & 70 (I-57 & I-70)
D7 WEED SPRAYING 2023-3
WEED CONTROL
VARIOUS COUNTIES (EFFINGHAM, CLAY & FAYETTE)

FOR INDEX OF SHEETS, SEE SHEET NO. 2
AADT = 24,647 (2021)

C-97-030-23



FULL SIZE PLANS HAVE BEEN PREPARED USING STANDARD ENGINEERING SCALES. REDUCED SIZED PLANS WILL NOT CONFORM TO STANDARD SCALES. IN MAKING MEASUREMENTS ON REDUCED PLANS, THE ABOVE SCALES MAY BE USED.

J.U.L.I.E.
JOINT UTILITY LOCATION INFORMATION FOR EXCAVATORS
1-800-892-0123
OR 811

PROJECT ENGINEER: DEBRA G. BARRETT
PROJECT MANAGER: DEBRA G. BARRETT

CONTRACT NO. 74B83

GROSS LENGTH = 249,532.8 FT. = 47.26 MILES
NET LENGTH = 249,532.8 FT. = 47.26 MILES

STATE OF ILLINOIS
DEPARTMENT OF TRANSPORTATION

SUBMITTED October 18, 2022

Jeffrey P. Myrland
REGIONAL ENGINEER

December 9, 2022

Steph M. Smith
ENGINEER OF DESIGN AND ENVIRONMENT

December 9, 2022

Steph M. Smith
DIRECTOR OF HIGHWAYS PROJECT IMPLEMENTATION

PRINTED BY THE AUTHORITY
OF THE STATE OF ILLINOIS

INDEX OF SHEETS

<u>SHEET NO.</u>	<u>ITEM</u>
1	COVER SHEET
2	INDEX OF SHEETS, LIST OF STANDARDS & SPRAY LIMITS
3	SUMMARY OF QUANTITIES
4-7	LOCATION MAPS
8	NO SPRAY AREAS

THE FOLLOWING STANDARDS ARE A PART OF THESE PLANS AND ARE INCLUDED FOLLOWING THE LAST NUMBERED SHEET OF THE PLANS.

<u>STD. NO.</u>	<u>DESCRIPTION</u>
000001-08	STANDARD SYMBOLS, ABBREVIATIONS, AND PATTERNS
001006	DECIMAL OF AN INCH AND OF A FOOT
701101-05	OFF-ROAD OPERATIONS, MULTILANE, 15' TO 24" FROM PAVEMENT EDGE
701106-02	OFF-ROAD OPERATIONS, MULTILANE, MORE THAN 15' AWAY
701426-09	LANE CLOSURE, MULTILANE, INTERMITTENT OR MOVING OPERATIONS, FOR SPEEDS >= 45 MPH
701901-08	TRAFFIC CONTROL DEVICES

SPRAY LIMITS

<u>ROUTE</u>	<u>COUNTY</u>	<u>MILE POST</u>	<u>DESCRIPTION</u>	<u>MILES</u>
I-57	FAYETTE	0.00 TO 8.47	MARION COUNTY LINE TO CLAY COUNTY LINE	8.47
I-57	CLAY	0.00 TO 0.32	FAYETTE COUNTY LINE TO EFFINGHAM COUNTY LINE	0.32
I-57	EFFINGHAM	0.00 TO 14.86	CLAY COUNTY LINE TO I-70	9.74
I-57	EFFINGHAM	0.00 TO 5.06	I-70 TO SHELBY COUNTY LINE	5.06
I-70	EFFINGHAM	0.00 TO 26.91	FAYETTE COUNTY LINE TO CUMBERLAND COUNTY LINE	23.67

NOTES:

WEED SPRAY SHALL BE APPLIED ON AREAS ALONG I-57 & I-70 AS DIRECTED BY THE ROADSIDE MAINTENANCE TECHNICIAN. IT IS THE INTENT TO USE THE ENTIRE QUANTITY WITHIN THE MILEPOSTS SHOWN.

THE RURAL/URBAN SPLITS FOR THIS CONTRACT ARE AS FOLLOWS:

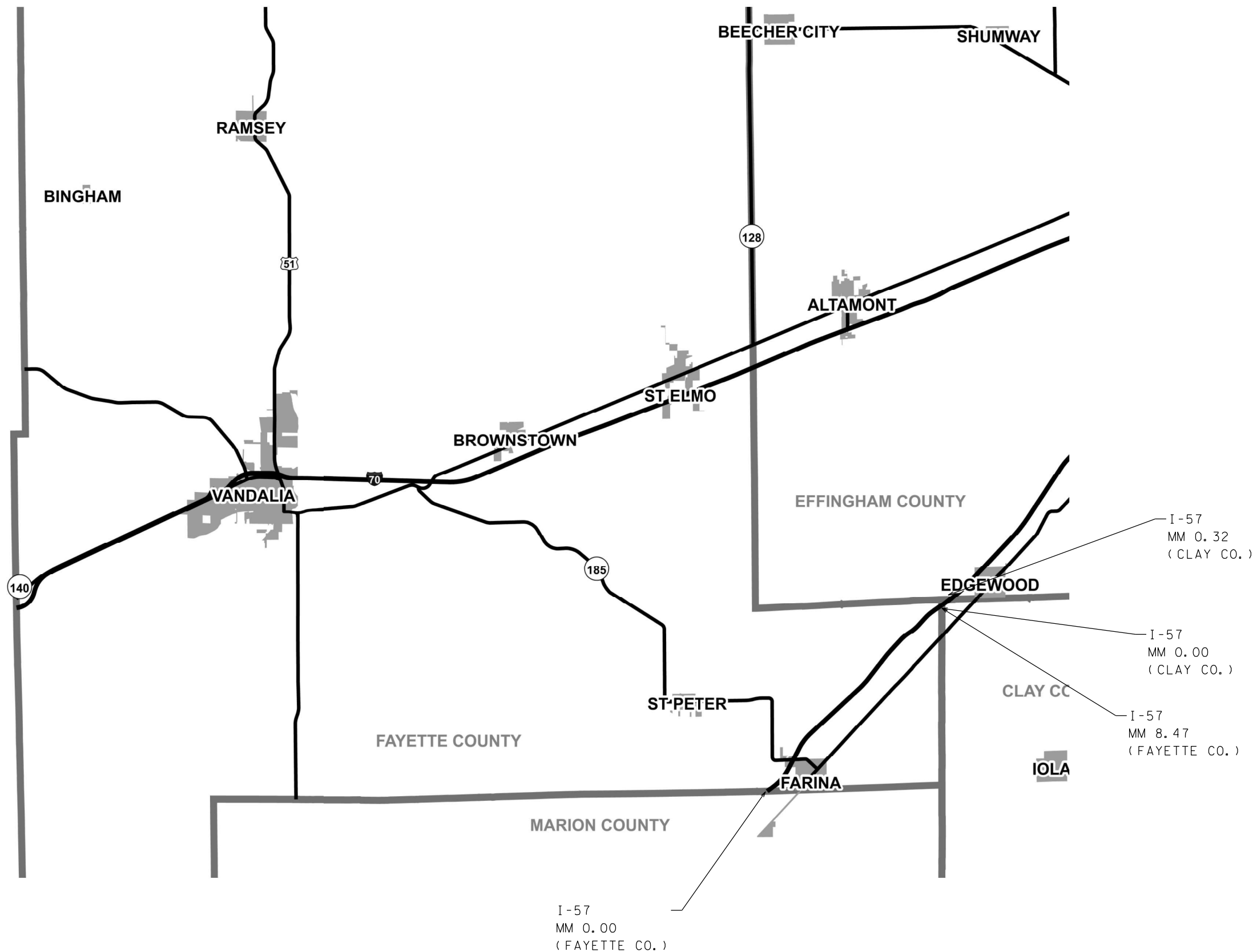
MILE MARKER 0.00 TO MILE MARKER 14.49 IS RURAL (I-57 EFFINGHAM) - NO SPRAY 4.22 TO 9.34
 MILE MARKER 14.49 TO MILE MARKER 14.86 IS URBAN (I-57 EFFINGHAM)
 MILE MARKER 0.00 TO MILE MARKER 1.81 IS URBAN (I-57 EFFINGHAM)
 MILE MARKER 1.81 TO MILE MARKER 5.06 IS RURAL (I-57 EFFINGHAM)

MILE MARKER 0.00 TO MILE MARKER 12.46 IS RURAL (I-70 EFFINGHAM) - NO SPRAY 4.43 TO 7.67
 MILE MARKER 12.46 TO MILE MARKER 19.35 IS URBAN (I-70 EFFINGHAM)
 MILE MARKER 19.35 TO MILE MARKER 26.91 IS RURAL (I-70 EFFINGHAM)

MODEL: Default
 FILE NAME: p:\ultra-cw-beadley.com\PIV\DOT\Documents\DOT Office\Dir\rdt_7\Project\74883\CADD\DATA\CAD\Sheet\ID74883-sht-gen-note.dgn

* EFFINGHAM, CLAY & FAYETTE

USER NAME = Mona.Steffen	DESIGNED -	REVISED -	STATE OF ILLINOIS DEPARTMENT OF TRANSPORTATION	INDEX OF SHEETS, LIST OF STANDARDS & SPRAY LIMITS	F.A.I. RTE.	SECTION	COUNTY	TOTAL SHEETS	SHEET NO.	
PLOT SCALE = 100,0000 ' / in.	DRAWN -	REVISED -			57&70	D7 WEED SPRAYING 2023-3	*	8	2	
PLOT DATE = 10/18/2022	CHECKED -	REVISED -			CONTRACT NO. 74883					
	DATE -	REVISED -			SCALE:	SHEET 1	OF 1	SHEETS	STA.	TO STA.



MODEL: Default
 FILE: \\marion.gov\public\paw.bentley.com\P\I\DOT\Documents\1\DOT_offices\Director_7\Project\74883\CADD\DATA\CAD\Sheet\74883-she1.dgn

USER NAME = Mona.Steffen	DESIGNED -	REVISED -
	DRAWN -	REVISED -
PLOT SCALE = 100,0000' / in.	CHECKED -	REVISED -
PLOT DATE = 10/18/2022	DATE -	REVISED -

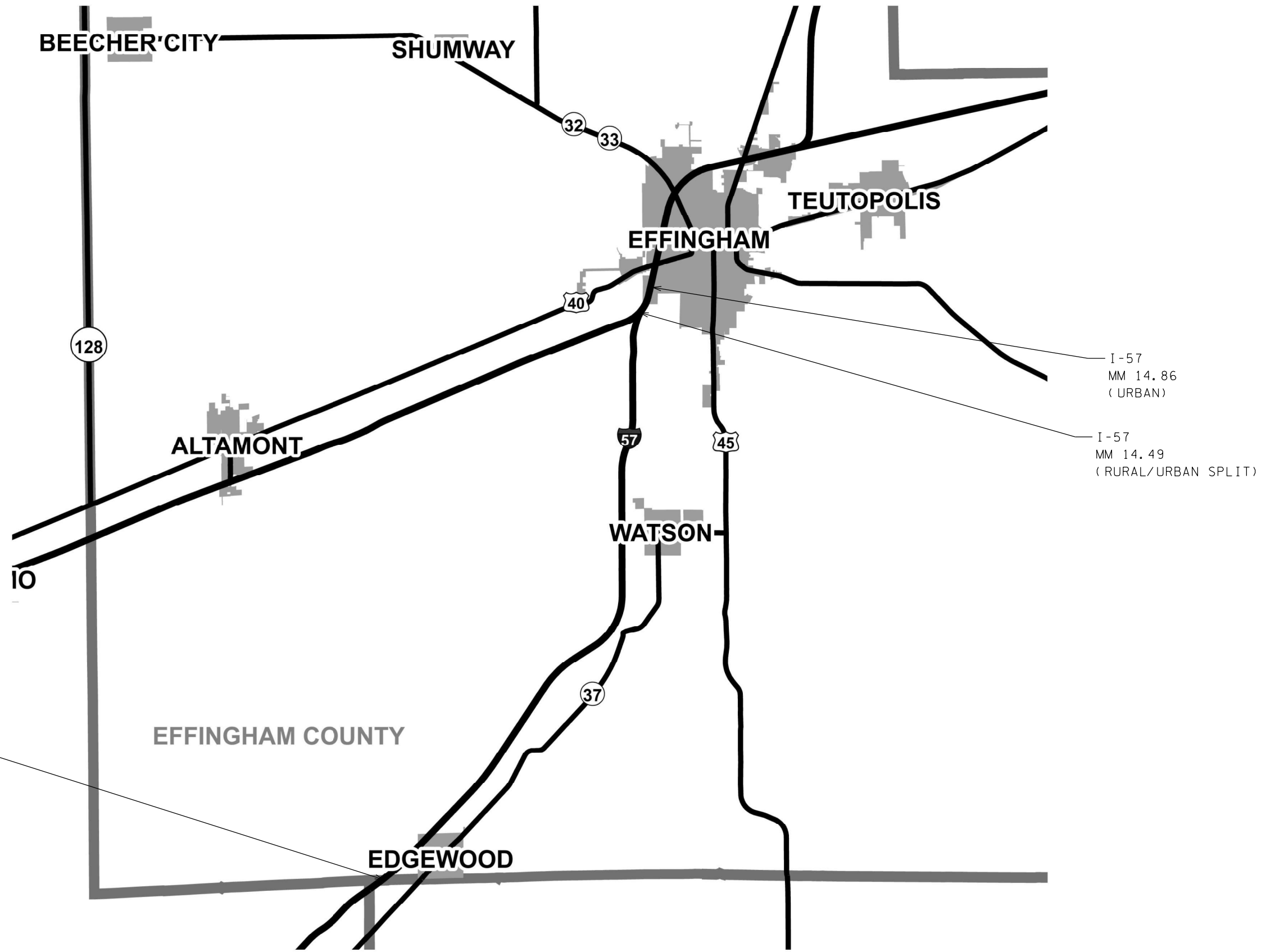
STATE OF ILLINOIS
DEPARTMENT OF TRANSPORTATION

PROJECT LIMITS
(I-57 - FAYETTE & CLAY COUNTIES) - RURAL

SCALE: SHEET 1 OF 1 SHEETS STA. TO STA.

F.A.I. RTE.	SECTION	COUNTY	TOTAL SHEETS	SHEET NO.
57&70	D7 WEED SPRAYING 2023-3	*	8	4
CONTRACT NO. 74883				
ILLINOIS FED. AID PROJECT				

* FAYETTE, CLAY & EFFINGHAM



MODEL: Default
 FILE: \\na161c-pw\ultra-cw-beachy.com\P\INDOT\Documents\INDOT_offices\Director_7\Projects\74883\CADD\DATA\CAD\Sheet\74883-sht1a.dgn

I-57
MM 0.00
(RURAL)

I-57
MM 14.86
(URBAN)

I-57
MM 14.49
(RURAL/URBAN SPLIT)

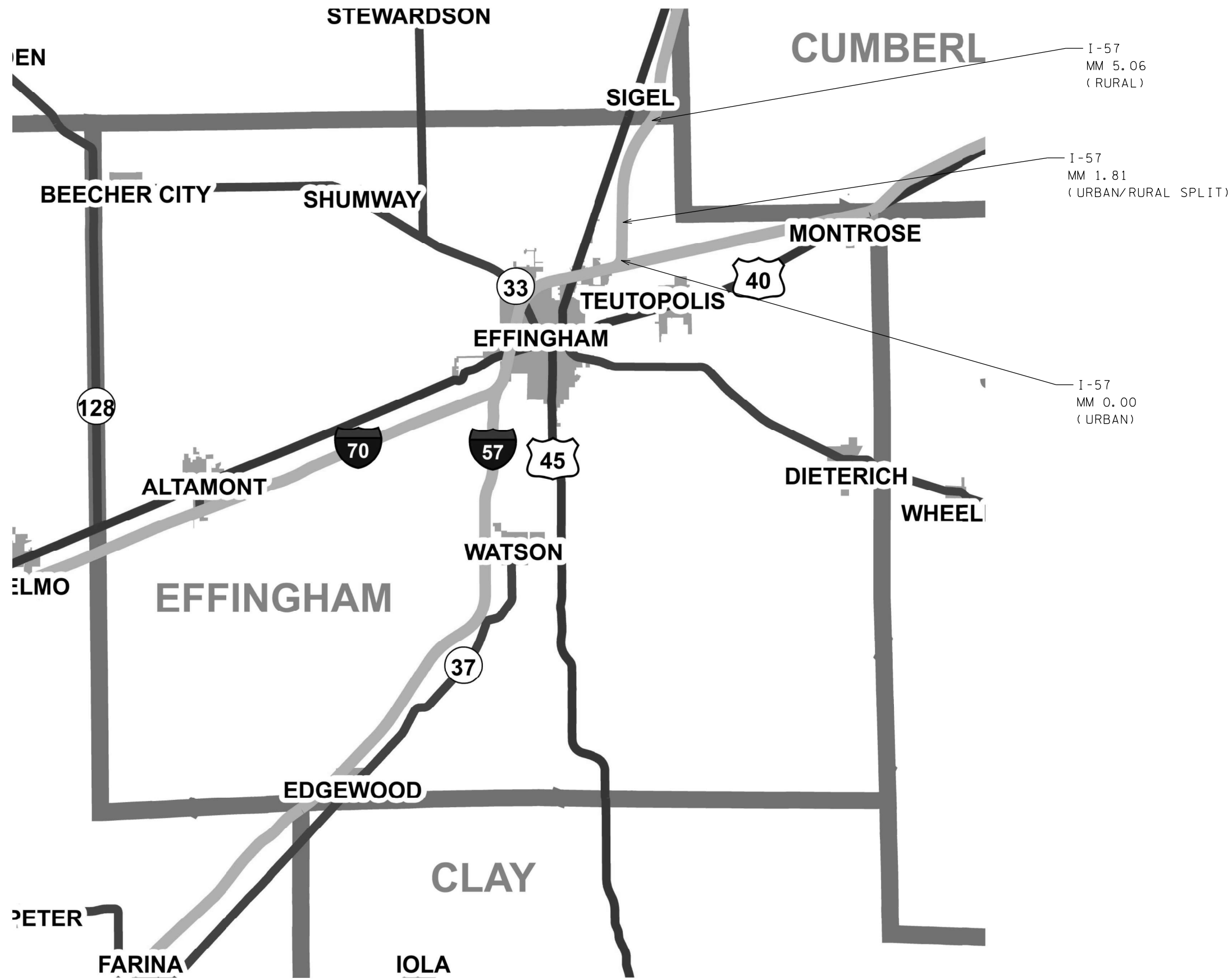
• FAYETTE, CLAY & EFFINGHAM

USER NAME = Mona.Steffen	DESIGNED -	REVISED -
	DRAWN -	REVISED -
PLOT SCALE = 100,0000' / in.	CHECKED -	REVISED -
PLOT DATE = 10/18/2022	DATE -	REVISED -

STATE OF ILLINOIS
DEPARTMENT OF TRANSPORTATION

PROJECT LIMITS			
I-57 (EFFINGHAM COUNTY) - RURAL & URBAN			
SCALE:	SHEET 1	OF 1	SHEETS
	STA.		TO STA.

F.A.I. RTE.	SECTION	COUNTY	TOTAL SHEETS	SHEET NO.
57&70	D7 WEED SPRAYING 2023-3	*	8	5
CONTRACT NO. 74883			ILLINOIS FED. AID PROJECT	



MODEL: Default
 FILE: \\maple01.pw.state.il.gov\pww\DOT\Documents\DOT Offices\District 7\Projects\74883\CADD\DATA\CAD\Sheet\74883-she1.dwg

• FAYETTE, CLAY & EFFINGHAM

USER NAME = Mona.Steffen	DESIGNED -	REVISED -
	DRAWN -	REVISED -
PLOT SCALE = 100,0000' / in.	CHECKED -	REVISED -
PLOT DATE = 10/18/2022	DATE -	REVISED -

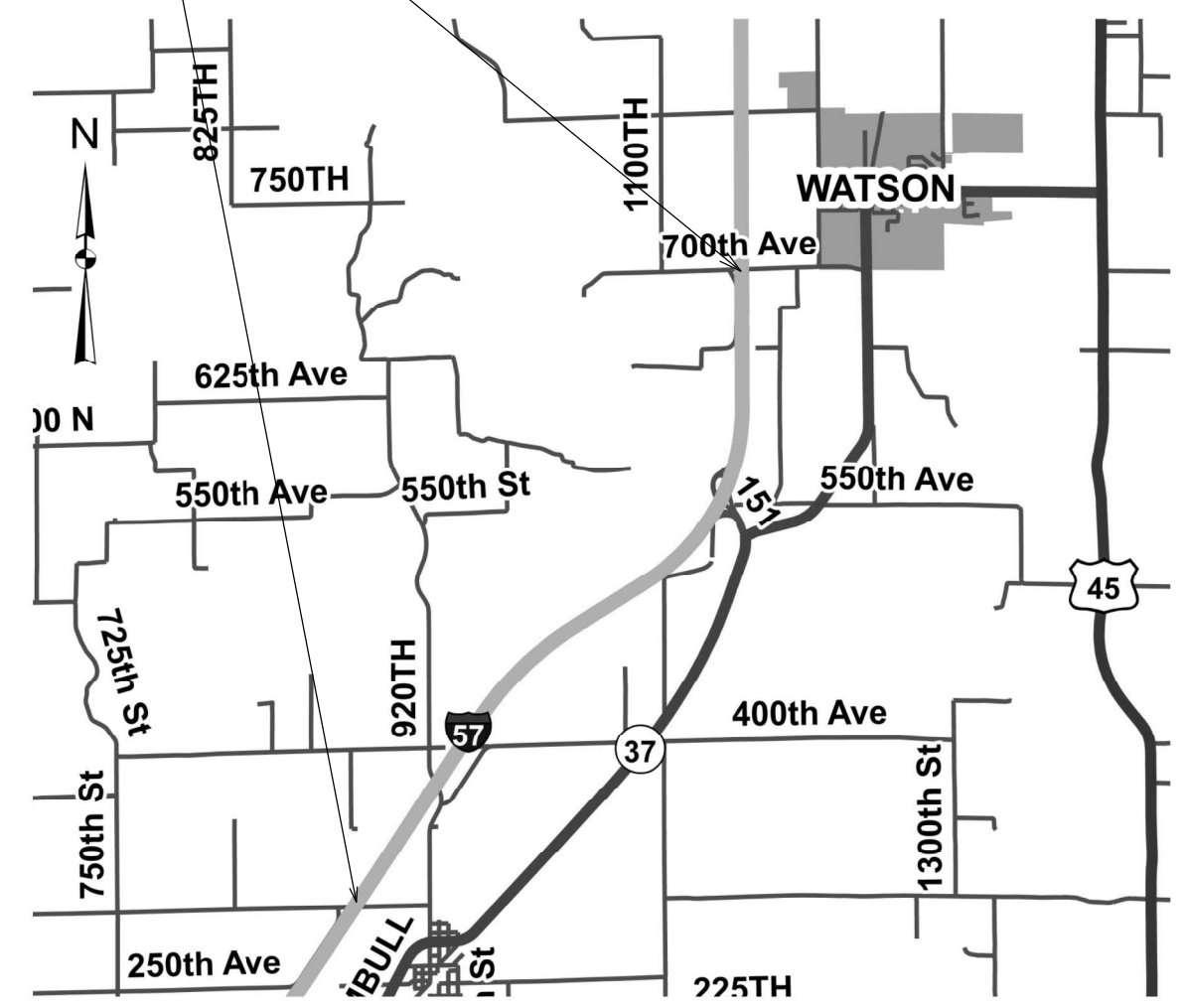
STATE OF ILLINOIS
DEPARTMENT OF TRANSPORTATION

PROJECT LIMITS
I-57 (EFFINGHAM COUNTY) - URBAN & RURAL

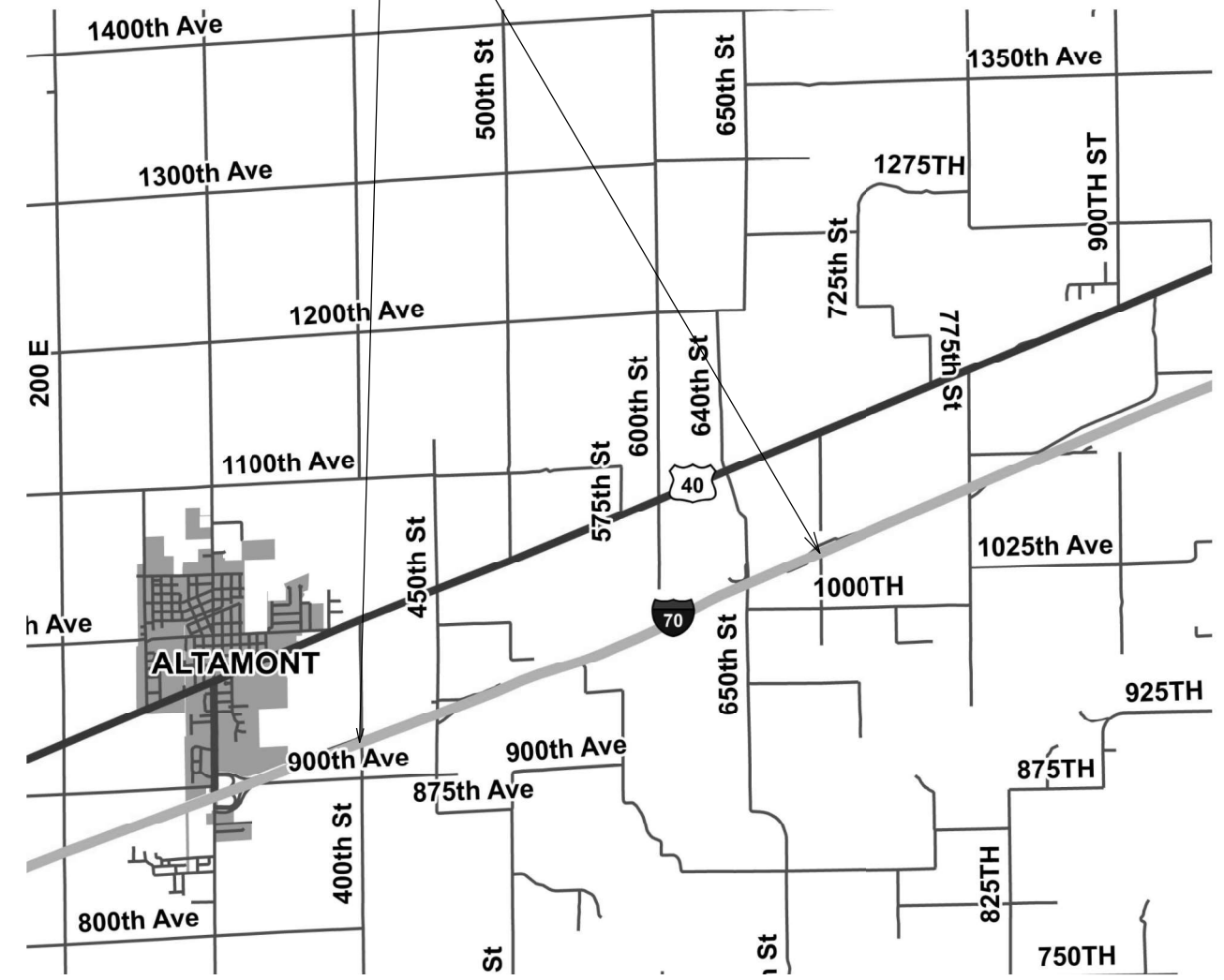
SCALE: SHEET 1 OF 1 SHEETS STA. TO STA.

F.A.I. RTE.	SECTION	COUNTY	TOTAL SHEETS	SHEET NO.
57&70	D7 WEED SPRAYING 2023-3	*	8	6
CONTRACT NO. 74883				
ILLINOIS FED. AID PROJECT				

NO SPRAY AREA



NO SPRAY AREA



MODEL: Default
 FILE: MainMap.pxd
 PROJECT: C:\Users\stev\Documents\DOT Office\Director\Projects\74883\CADD\Map\DOT\74883-Map.dwg

USER NAME = Mona.Steffen	DESIGNED -	REVISED -
	DRAWN -	REVISED -
PLOT SCALE = 100,0000' / in.	CHECKED -	REVISED -
PLOT DATE = 10/18/2022	DATE -	REVISED -

STATE OF ILLINOIS
DEPARTMENT OF TRANSPORTATION

NO SPRAY AREAS			
SCALE:	SHEET 1	OF 1 SHEETS	STA. TO STA.

F.A.I. RTE.	SECTION	COUNTY	TOTAL SHEETS	SHEET NO.
57&70	D7 WEED SPRAYING 2023-3	*	8	8
CONTRACT NO. 74883				
ILLINOIS FED. AID PROJECT				