

STATE OF ILLINOIS
DEPARTMENT OF TRANSPORTATION

F.A.I. RTE.	SECTION	COUNTY	TOTAL SHEETS	SHEET NO.
57	D9 DECK SEAL 2023-1	ALEXANDER	6	1
		ILLINOIS	CONTRACT NO. 78866	

D-99-023-18

FOR INDEX OF SHEETS, SEE SHEET NO. 3
FOR SUMMARY OF QUANTITIES, SEE SHEET NO. 4
FOR STRUCTURAL PAVEMENT DESIGN INFORMATION, SEE SHEET NO. N/A

**PROPOSED
HIGHWAY PLANS**

F.A.I. ROUTE 57 (I-57)
SECTION D9 DECK SEAL 2023-1
PROJECT NHPP-7DE9(774)
DECK SEALING
ALEXANDER COUNTY

C-99-058-21



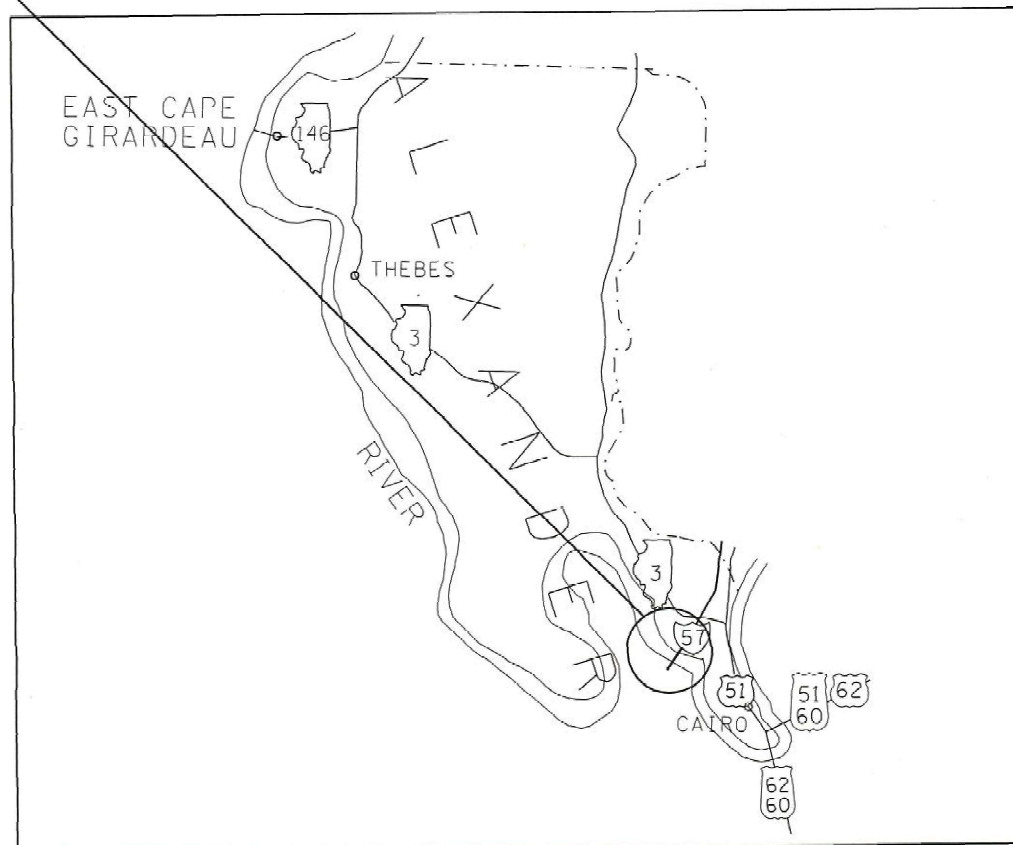
TRAFFIC DATA

2020 TWO WAY ADT = 13,200
47 % TRUCKS

TOWNSHIPS

COUNTY UNIT ROAD DISTRICT 01

EXISTING STRUCTURE NO. 002-0022
FAI 57 (I-57 NB & SB)



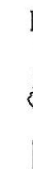
DESIGN DESIGNATION : N/A
COORDINATE SYSTEM : N/A
POSTED SPEED : 70 MPH

J.U.L.I.E.
JOINT UTILITY LOCATION INFORMATION FOR EXCAVATION
1-800-892-0123
OR 811

PROJECT ENGINEER: GRANT DETERDING
PROJECT DESIGNER: ERIC ROETHE

CONTRACT NO. 78866

GROSS LENGTH = 4090.5 FT. = 0.78 MILES
NET LENGTH = 4090.5 FT. = 0.78 MILES



STATE OF ILLINOIS
DEPARTMENT OF TRANSPORTATION

SUBMITTED Sept 30 20 22

Kerk H. Brown
REGION FIVE ENGINEER

December 9, 2022
[Signature]
ENGINEER OF DESIGN AND ENVIRONMENT

December 9, 2022
[Signature]
DIRECTOR OF HIGHWAYS PROJECT IMPLEMENTATION

PRINTED BY THE AUTHORITY
OF THE STATE OF ILLINOIS

MODEL: D:\dwg
FILE NAME: p:\w\l\p\c\pw\kentley.com\DWG\DOT\Documents\DOT - Office\District - 9\Projects\78866\CAD\Drawings\0978866 - 1 Sheets.dwg

Prepared By: Charles Stein
DISTRICT STUDIES & PLANS ENGINEER

Examined By: Nancy Tee
DISTRICT LAND ACQUISITION ENGINEER

Examined By: Car Nelson
DISTRICT PROGRAM DEVELOPMENT ENGINEER

Examined By: R. C. Co
DISTRICT OPERATIONS ENGINEER

Examined By: Douglas J. Mellish
DISTRICT PROJECT IMPLEMENTATION ENGINEER

Examined By: Douglas J. Mellish
DISTRICT CONSTRUCTION ENGINEER

Examined By: R. C. Co
DISTRICT MATERIALS ENGINEER

USER NAME = Eric Roethe	DESIGNED - _____	REVISED - _____
	DRAWN - _____	REVISED - _____
PLOT SCALE = 100 3269' / in	CHECKED - _____	REVISED - _____
PLOT DATE = 9/27/2022	DATE - _____	REVISED - _____

**STATE OF ILLINOIS
DEPARTMENT OF TRANSPORTATION**

SIGNATURE SHEET

SCALE: _____ SHEET _____ OF _____ SHEETS STA. _____ TO STA. _____

F.A.I. RTE.	SECTION	COUNTY	TOTAL SHEETS	SHEET NO.
57	09 DECK SEAL 2023-1	ALEXANDER	6	2
CONTRACT NO. 78866			ILLINOIS FED. AID PROJECT	

GENERAL NOTES

- 1) ALL EXPANSION JOINTS, BRIDGE DECK DRAINS, AND SCUPPERS SHOULD BE CLEANED OF ALL DEBRIS BY BLOWING WITH HIGH PRESSURE AIR.
- 2) UNDER EXPANSION JOINTS ALL BEAM ENDS AND SUBSTRUCTURE UNITS SHALL BE CLEANED OF ALL DEBRIS BY BLOWING WITH HIGH PRESSURE AIR AS DIRECTED BY THE ENGINEER
- 3) COMMITMENTS: NONE AS OF SEPTEMBER 26, 2022.

INDEX OF SHEETS

SHEET NO	DESCRIPTION
1	COVER SHEET
2	SIGNATURE SHEET
3	INDEX OF SHEETS, HIGHWAY STANDARDS, NOTES
4	SUMMARY OF QUANTITIES
5	GENERAL PLAN AND ELEVATION
6	STAGING DETAILS

HIGHWAY STANDARDS

- 000001-08 STANDARD SYMBOLS ABBREVIATIONS PATTERNS
- 001006 DECIMAL OF AN INCH AND OF A FOOT
- 701101-05 OFF RD OP MULTI LN LESS THAN 15FT TO EOP
- 701106-02 OFF RD OP MULTI LN MORE THAN 15FT AWAY
- 701400-11 APPRCH TO LN CLOSURE FRWAY EXPWAY
- 701406-13 LN CLOSURE FRWAY EXPWAY DAY OP ONLY
- 701901-08 TRAF CNTRL DEVICES

REV. - MS

MODEL: Default
 FILE NAME: p:\11400-pw-bentley.com\FWIDOT\Documents\DOT_Offices\District_9\Projects\78866\CADData\CADDrawings\DS78866-1-Sheets.dgn

USER NAME = Eric,Roethe	DESIGNED - _____	REVISED - _____	STATE OF ILLINOIS DEPARTMENT OF TRANSPORTATION	GENERAL NOTES, INDEX OF SHEETS, STANDARDS	F.A.I. RTE.	SECTION	COUNTY	TOTAL SHEETS	SHEET NO.
PLOT SCALE = 101.1828' / in.	DRAWN - _____	REVISED - _____			57	D9 DECK SEAL 2023-1	ALEXANDER	6	3
PLOT DATE = 10/20/2022	CHECKED - _____	REVISED - _____			CONTRACT NO. 78866				
	DATE - _____	REVISED - _____			ILLINOIS FED. AID PROJECT				
			SCALE: _____	SHEET _____ OF _____ SHEETS	STA. _____	TO STA. _____			

SUMMARY OF QUANTITIES

CODE NUMBER	ITEM DESCRIPTION	UNIT	TOTAL QUANTITY	COUNTY:	ALEXANDER CO	ALEXANDER CO
				ROUTE:	FAI 57	FAI 57
			FUNDING:	90% FEDERAL 10% STATE	100% MISSOURI	
				CONSTRUCTION TYPE	CONSTRUCTION TYPE	
				0047	0047	
67100100	MOBILIZATION	L SUM	1	0.5	0.5	
70100700	TRAFFIC CONTROL AND PROTECTION, STANDARD 701406	L SUM	1	0.5	0.5	
70107025	CHANGEABLE MESSAGE SIGN	CAL DA	28	14	14	
X5870015	BRIDGE DECK CONCRETE SEALER	SQ FT	274,350	137,175	137,175	

MODEL: Default
FILE NAME: p:\11100-cpw-jent\by.com\11100DOT\Documents\DOT - Offices\District 9\Projects\78866\CAD\Drawings\978866-1-Sheets.dgn

USER NAME = Eric.Roethe	DESIGNED - _____	REVISED - _____
	DRAWN - _____	REVISED - _____
PLOT SCALE = 101.0304 ' / in.	CHECKED - _____	REVISED - _____
PLOT DATE = 10/25/2022	DATE - _____	REVISED - _____

STATE OF ILLINOIS
DEPARTMENT OF TRANSPORTATION

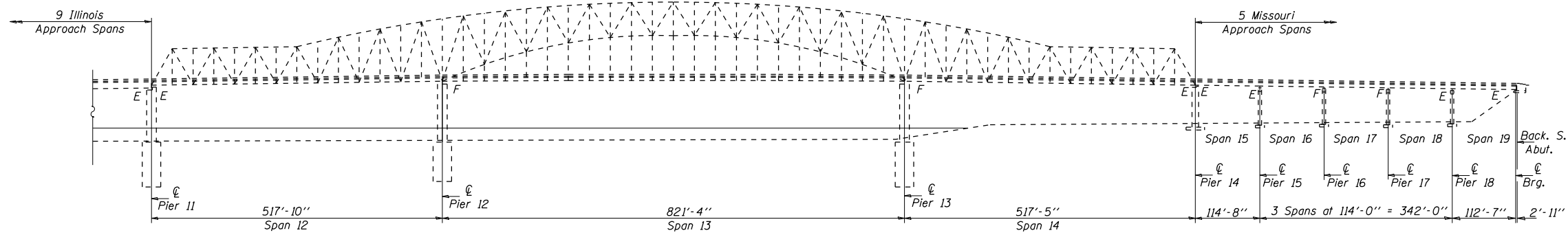
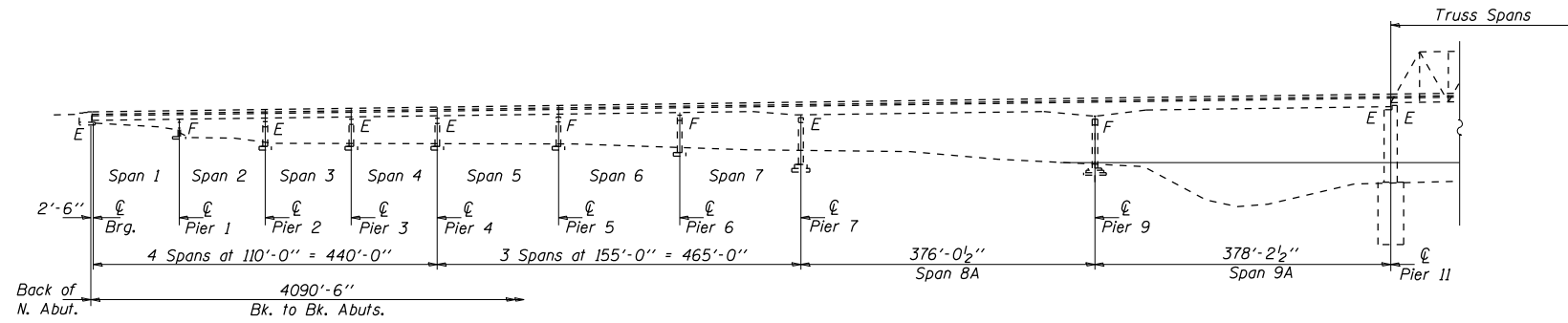
SUMMARY OF QUANTITIES

SCALE: _____ SHEET ___ OF ___ SHEETS STA. _____ TO STA. _____

F.A.I. RTE.	SECTION	COUNTY	TOTAL SHEETS	SHEET NO.
57	D9 DECK SEAL 2023-1	ALEXANDER	6	4
CONTRACT NO. 78866				
ILLINOIS FED. AID PROJECT				

STATE OF ILLINOIS
DEPARTMENT OF TRANSPORTATION

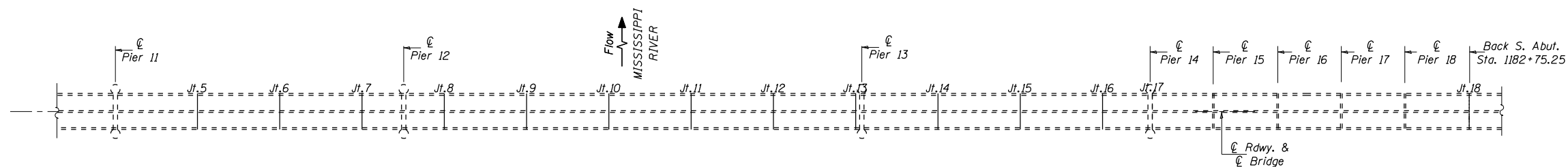
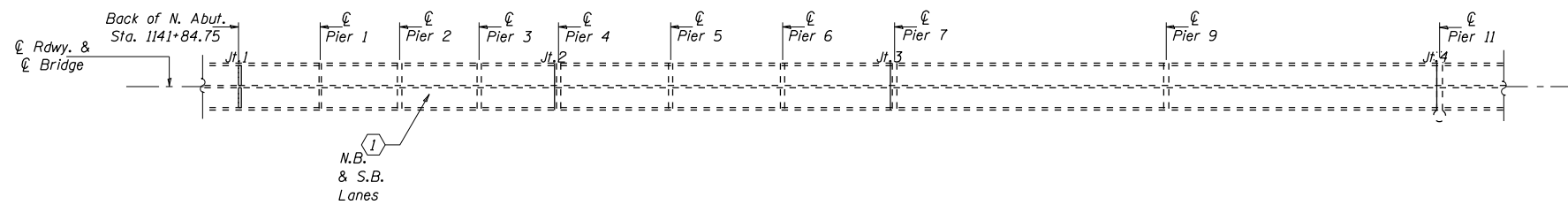
Notes: ① Apply Bridge Deck Concrete Sealer to deck surface, tops, and inside vertical faces of parapets.



ELEVATION
(Looking East)

BILL OF MATERIAL

ITEM	UNIT	QUANTITY
Bridge Deck Concrete Sealer	Sq. Ft.	274,350



PLAN



EXPIRES 11-30-2024

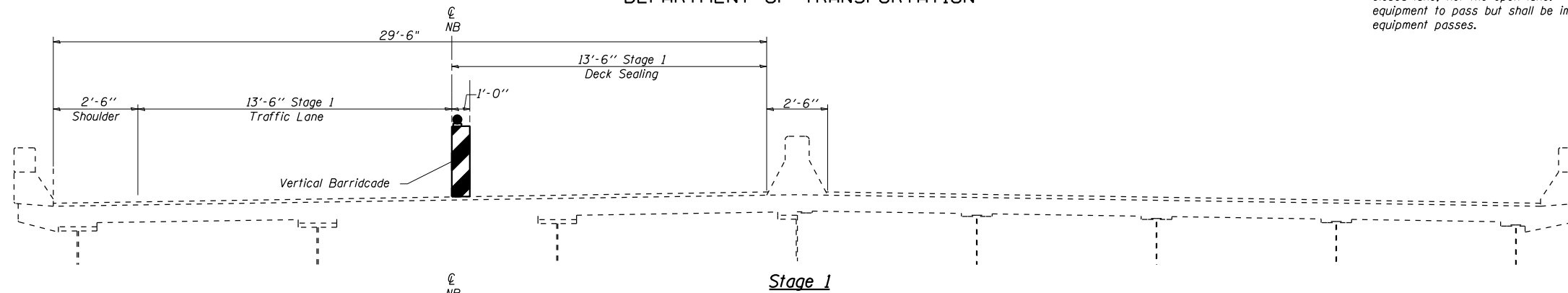
Jayne F. Schiff

**GENERAL PLAN
AND ELEVATION
BRIDGE DECK SEAL
F.A.I. 57 OVER MISSISSIPPI RIVER
SEC. D9 DECK SEAL 2023-1
ALEXANDER COUNTY
S.N. 002-0022**

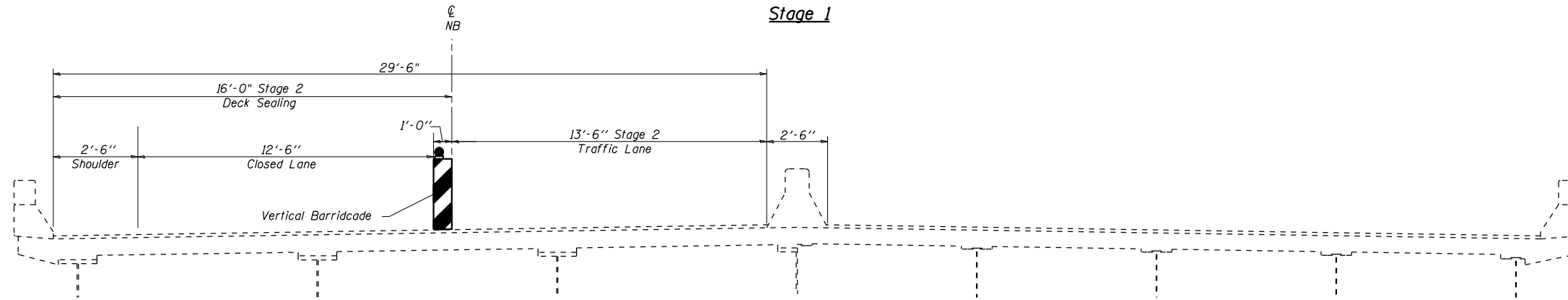
FILE NAME =	USER NAME = Eric.Roethe	DESIGNED -	REVISED -	STATE OF ILLINOIS DEPARTMENT OF TRANSPORTATION	GENERAL PLAN AND ELEVATION		F.A.I. RTE.	SECTION	COUNTY	TOTAL SHEETS	SHEET NO.	
p:\dot\pw.bentley.com\WIDOT\Documents	\IDOT Offices\District 9\Projects\78866\CADD\Drawings\978866-1-Sheets.dgn	CHECKED -	REVISED -		SCALE: _____	SHEET NO. _____ OF _____ SHEETS	STA. _____ TO STA. _____	57	D9 DECK SEAL 2023-1	ALEXANDER	6	5
		DATE -	REVISED -					CONTRACT NO. 78866				
								ILLINOIS FED. AID PROJECT				

STATE OF ILLINOIS
DEPARTMENT OF TRANSPORTATION

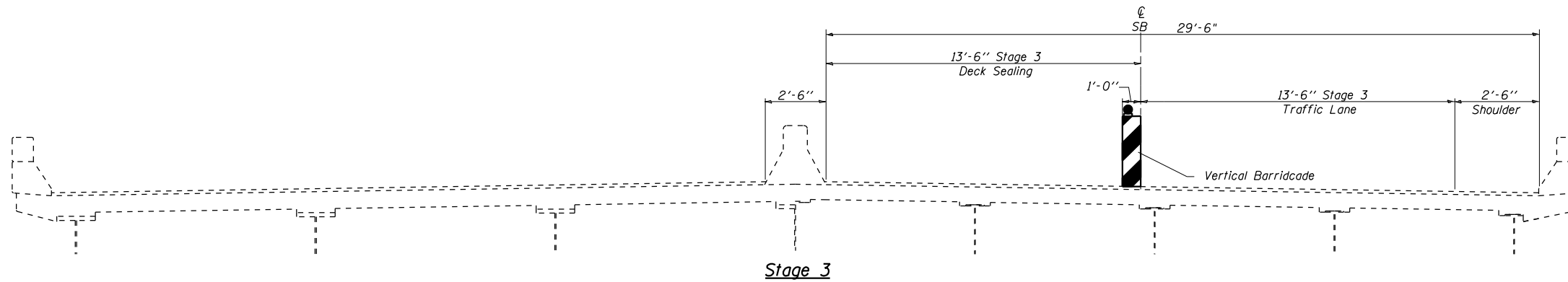
Notes: Vertical barricades will be required. The vertical barricades shall be placed on the closed lane, not the open lane. They may be moved over to the open lane to allow equipment to pass but shall be immediately moved back to the closed lane after the equipment passes.



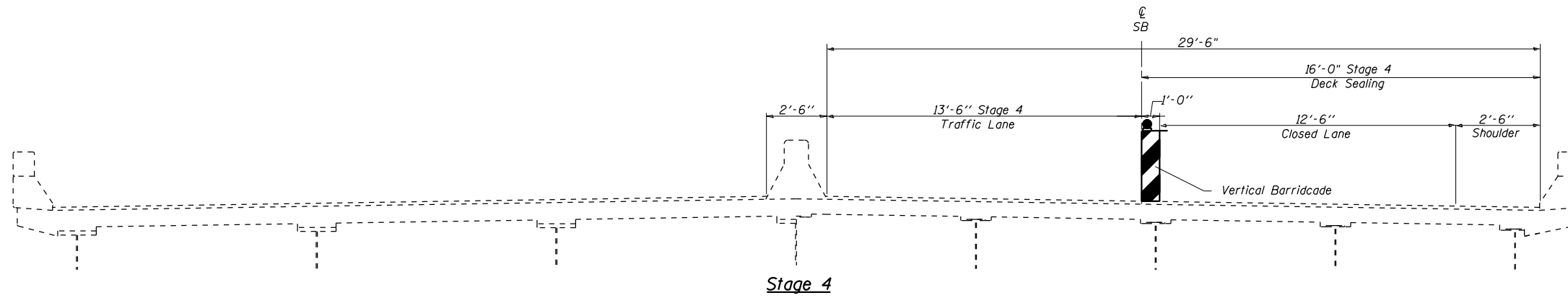
Stage 1



Stage 2



Stage 3



Stage 4

Northbound FAI-57

Southbound FAI-57

NOTES:

If the Contractor chooses to modify the suggested sequence of construction, the Contractor shall submit a revised sequence of construction and traffic control layout details for review and acceptance by the Engineer.

All sections looking South.

For additional traffic control details, refer to Traffic Control and Protection, Standard 701400 and Standard 701406.

STAGE CONSTRUCTION
DETAILS

FILE NAME =	USER NAME = Eric.Roethe	DESIGNED -	REVISED -	STATE OF ILLINOIS DEPARTMENT OF TRANSPORTATION	STAGE CONSTRUCTION			F.A.I. RTE.	SECTION	COUNTY	TOTAL SHEETS	SHEET NO.
p:\idot\pw.bentley.com\PIWIDOT\Documents\IDOT Offices\District 9\Projects\78866\CADD\Drawings\978866-1-Sheets.dgn	PLANNED	REVISED -	REVISED -					57	D9 DECK SEAL 2023-1	ALEXANDER	6	6
PLOT SCALE = 100.2794' / in.	CHECKED -	REVISED -	REVISED -		CONTRACT NO. 78866			ILLINOIS FED. AID PROJECT				
PLOT DATE = 10/20/2022	DATE -	REVISED -	REVISED -		SCALE: _____	SHEET NO. ____ OF ____ SHEETS	STA. _____ TO STA. _____					