

STATE OF ILLINOIS
DEPARTMENT OF TRANSPORTATION

F.A.I. RTE.	SECTION	COUNTY	TOTAL SHEETS	SHEET NO.
24/57	D9 WEED SPRAY 2023-2	VARIOUS	12	1
		ILLINOIS	CONTRACT NO. 78981	

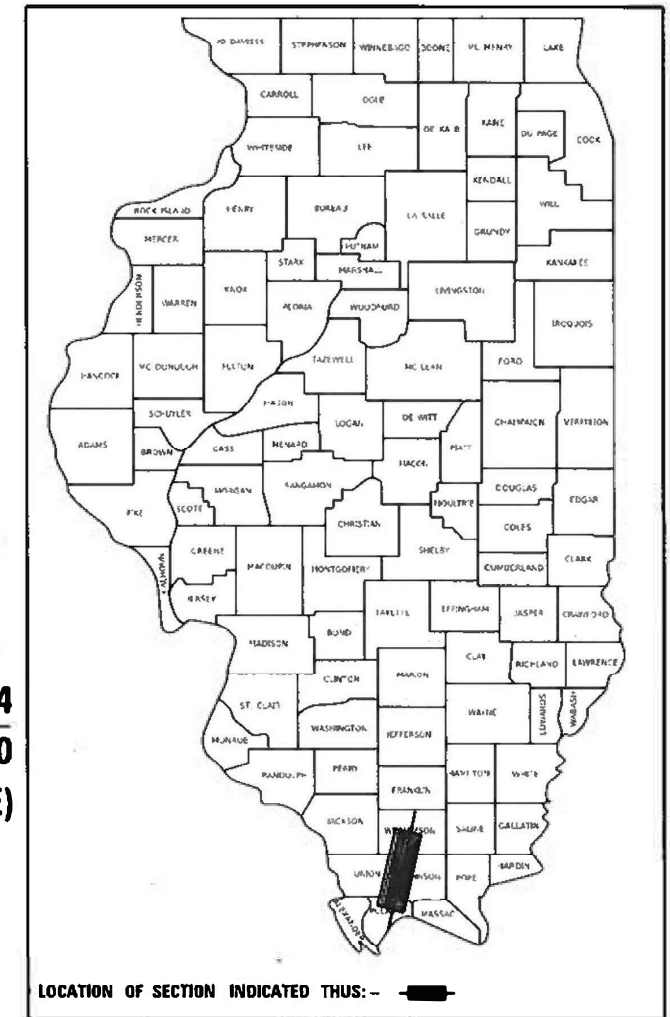
FOR INDEX OF SHEETS, SEE SHEET NO.
FOR SUMMARY OF QUANTITIES, SEE SHEET NO.
FOR STRUCTURAL PAVEMENT DESIGN INFORMATION, SEE SHEET NO.

PROPOSED
HIGHWAY PLANS

FAI 24 (I-24) & FAI 57 (I-57)
SECTION D9 WEED SPRAY 2023-2

WEED SPRAYING
VARIOUS COUNTY

D-99-015-23



LOCATION #6 I-57

MP 43.3 TO MP 62.1
(WILLIAMSON/JOHNSON COUNTY LINE
TO FRANKLIN/WILLIAMSON COUNTY LINE)

C-99-026-23

LOCATION #5 I-24

MP 1.6 TO MP 0
(I-57 TO WILLIAMSON/JOHNSON COUNTY LINE)

LOCATION #4 I-57

MP 43.3 TO MP 39
(WILLIAMSON/JOHNSON COUNTY LINE
TO JOHNSON/UNION COUNTY LINE)

DESIGN DESIGNATION : N/A
COORDINATE SYSTEM : N/A
POSTED SPEED : 70 MPH

LOCATION #3 I-57

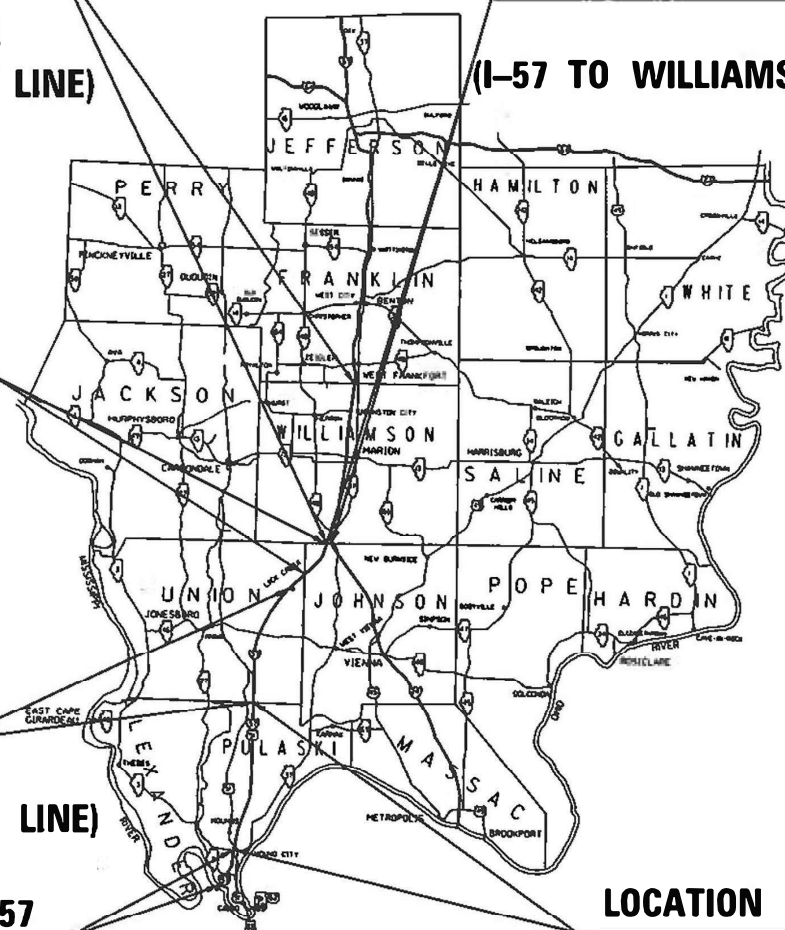
MP 37 TO MP 22
(UNION/PULASKI COUNTY LINE)

LOCATION #1 I-57

MP 4.3 TO MP 1

LOCATION #2 I-57

MP 22 TO MP 4.3
(PULASKI/ALEXANDER COUNTY LINE)



J.U.L.I.E.
JOINT UTILITY LOCATION INFORMATION FOR EXCAVATION
1-800-892-0123
OR 811

PROJECT ENGINEER: VALERIE ROLLA
PROJECT DESIGNER: DACODA BLOCKLEY

CONTRACT NO. 78981

STATE OF ILLINOIS
DEPARTMENT OF TRANSPORTATION

SUBMITTED Oct 28 20 22
Kirk H. Brown
REGION FIVE ENGINEER

December 9, 2022
[Signature]
ENGINEER OF DESIGN AND ENVIRONMENT

December 9, 2022
[Signature]
DIRECTOR OF HIGHWAYS PROJECT IMPLEMENTATION

PRINTED BY THE AUTHORITY
OF THE STATE OF ILLINOIS

MODEL - SIGNATURE (Sheet)
FILE NAME: c:\p1\060606\benley.com\p1\060606\DOT\Office\District 9\0606\Project\1981\CA\DO\CA\AD\hires\0928981\SWA-Cover_S11.dwg

Prepared By: Charles Stein
DISTRICT STUDIES & PLANS ENGINEER

Examined By: _____
DISTRICT LAND ACQUISITION ENGINEER

Examined By: Con Nola
DISTRICT PROGRAM DEVELOPMENT ENGINEER

Examined By: [Signature]
DISTRICT OPERATIONS ENGINEER

Examined By: Douglas J. Merid
DISTRICT PROJECT IMPLEMENTATION ENGINEER

Examined By: Douglas J. Merid
DISTRICT CONSTRUCTION ENGINEER

Examined By: Ann W. Hays
DISTRICT MATERIALS ENGINEER

USER NAME = Dacoda.Blockley	DESIGNED -	REVISED -
	DRAWN -	REVISED -
PLOT SCALE = 0.16666633' / in.	CHECKED -	REVISED -
PLOT DATE = 10/14/2022	DATE -	REVISED -

**STATE OF ILLINOIS
DEPARTMENT OF TRANSPORTATION**

SIGNATURE SHEET

SCALING SCALE SHEET 2 OF 12 SHEETS STA. TO STA.

F.A.J. RTE.	SECTION	COUNTY	TOTAL SHEETS	SHEET NO.
24/57	D9 WEED SPRAY 2023-2	VARIOUS	12	2
CONTRACT NO. 78981				
ILLINOIS FED. AID PROJECT				

SUMMARY OF QUANTITIES

CODE NUMBER	ITEM DESCRIPTION	UNIT	SUMMARY OF QUANTITIES	
			FAI 24/FAI 57	100% STATE RURAL ROADWAY 0031
67100100	MOBILIZATION	L SUM		1
X0325681	NON-IONIC SURFACTANT	GALLON		141
X0325947	MILESTONE VM	GALLON		84.5
X2000002	VASTLAN	GALLON		338

MODEL: SDO (Sheet)
 FILE NAME: p:\illic\csw\berkeley.com\PMIDOT\Documents\IDOT_Offices\District 9\PRD Projects\78981\CADD\Draws\CAD\Draws\0978981\SNC\S-C-SCHEDULES.dgn

SCHEDULE OF QUANTITIES

LOCATION	MARKED ROUTE	COUNTY	ESTIMATED ACRES	MILESTONE VM	VASTLAN	NON-IONIC SURFACTANT
				GALLONS	GALLONS	GALLONS
1	FAI 57 NB	ALEXANDER	48.5	2.28	9.06	3.79
	FAI 57 SB	ALEXANDER	48.5	2.28	9.06	3.79
2	FAI 57 NB	PULASKI	267.5	12.54	50.16	20.9
	FAI 57 SB	PULASKI	267.5	12.54	50.16	20.9
3	FAI 57 NB	UNION	218	10.22	40.88	17.03
	FAI 57 SB	UNION	218	10.22	40.88	17.03
4	FAI 57 NB	JOHNSON	28.75	1.35	3.28	2.25
	FAI 57 SB	JOHNSON	28.75	1.35	3.28	2.25
5	FAI 24 EB	WILLIAMSON	17.5	0.82	3.28	1.37
	FAI 24 WB	WILLIAMSON	17.5	0.82	3.28	1.37
6	FAI 57 NB	WILLIAMSON	320	15	60	25
	FAI 57 SB	WILLIAMSON	320	15	60	25
TOTAL				84.5	338	141

MODEL: SCHEDULE_OF_QUANTITIES (Sheet)
FILE NAME: p:\info\sc\2023\78981\DOT\Office\District 9\PRD Projects\78981\CADD\Drawings\CAD\Drawings\981\SYNCS\SCS\SCHEDULES.dgn

USER NAME = Dacoda.Blockley	DESIGNED -	REVISED -	STATE OF ILLINOIS DEPARTMENT OF TRANSPORTATION	SCHEDULE OF QUANTITIES				F.A.I. RTE.	SECTION	COUNTY	TOTAL SHEETS	SHEET NO.
PLOT SCALE = 0.16666633 1/16 in.	DRAWN -	REVISED -		SCALING SCALE	SHEET 5	OF 12 SHEETS	STA.	TO STA.	D9 WEED SPRAY 2023-2	VARIOUS	12	5
PLOT DATE = 10/28/2022	CHECKED -	REVISED -		CONTRACT NO. 78981								
DATE -	REVISED -			ILLINOIS FED. AID PROJECT								

SCHEDULE OF ROUTES

LOCATION	COUNTY	MARKED ROUTE
1	ALEXANDER	I-57 FROM MP 1 TO MP 4.3 (@ THE ALEXANDER/PULASKI COUNTY LINE)
2	PULASKI	I-57 FROM MP 4.3 (@ THE ALEXANDER/PULASKI COUNTY LINE) TO MP 22 (@ THE PULASKI/UNION COUNTY LINE)
3	UNION	I-57 FROM MP 22 (@ THE PULASKI/UNION COUNTY LINE) TO MP 37 (NORTH OF THE LICK CREEK INTERCHANGE)
4	JOHNSON	I-57 FROM MP 39 (@ THE UNION/JOHNSON COUNTY LINE) TO MP 43.3 (@ THE JOHNSON/WILLIAMSON COUNTY LINE)
5	WILLIAMSON	I-24 FROM MP 1.6 (@ THE WILLIAMSON/JOHNSON COUNTY LINE) TO MP 0 (@ THE I-24/I-57 SPLIT)
6	WILLIAMSON	I-57 FROM MP 43.3 (@ THE JOHNSON/WILLIAMSON COUNTY LINE) TO MP 62.1 (@ THE FRANKLIN/WILLIAMSON COUNTY LINE)

ESTIMATE OF TOTAL MATERIALS FOR SPRAY

MATERIAL	GALLONS
MILESTONE	84.5
VASTLAN	338.0
SURFACTANT	141.0
CLEAN WATER	54,015

SPRAY MIXTURE

MILESTONE MIXTURE	
MILESTONE	6.0 OZ OF PRODUCT/ACRE
VASTALAN	24 OZ. OF PRODUCT/ACRE
SURFACTANT	10 OZ. OF PRODUCT/ACRE
CLEAN WATER	30 GALLONS/ACRE

MODEL: SCHEDULE_OF_ROUTES (Sheet 1)
 FILE NAME: P:\GIS\Projects\DOT\Office\District 9\PRD Projects\78981\CADD\Drawings\CADD\Drawings\78981\SNC\SOS\SCHEDULES.dgn

USER NAME = Dacoda.Blockley	DESIGNED -	REVISED -
	DRAWN -	REVISED -
PLOT SCALE = 0.16666633 1/16 in.	CHECKED -	REVISED -
PLOT DATE = 10/28/2022	DATE -	REVISED -

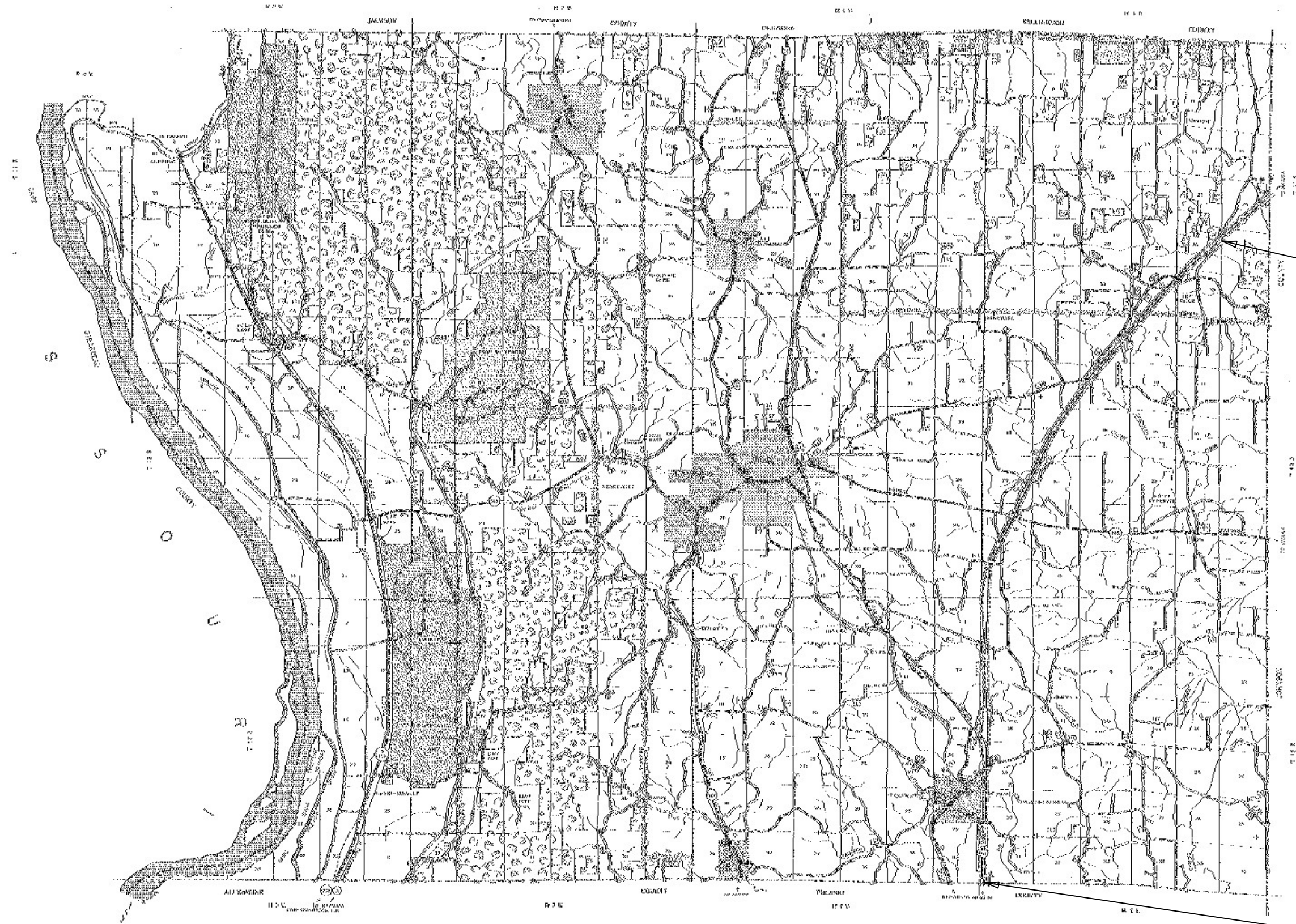
**STATE OF ILLINOIS
DEPARTMENT OF TRANSPORTATION**

**SCHEDULE OF ROUTES
SPRAY MIXTURES**

SCALE NO SCALE SHEET 6 OF 12 SHEETS STA. TO STA.

F.A.I. RTE.	SECTION	COUNTY	TOTAL SHEETS	SHEET NO.
24/57	D9 WEED SPRAY 2023-2	VARIOUS	12	6
CONTRACT NO. 78981				
ILLINOIS FED. AID PROJECT				

UNION COUNTY LOCATION MAP



END LOCATION 3: I-57 AT MP 37

BEGIN LOCATION 3: I-57 AT MP 22
PULASKI/UNION COUNTY LINE

MODEL: UNION_CO (Sheet)
 FILE NAME: pulaski\p\dot\document\DOT\Office\District 9\9800 Projects\78981\CADD\data\CAD\sheet\0978981_S\NC-LocationMap.dgn

USER NAME = Dacoda.Blockley	DESIGNED -	REVISED -
	DRAWN -	REVISED -
PLOT SCALE = 0.16666633 1/16 in.	CHECKED -	REVISED -
PLOT DATE = 10/14/2022	DATE -	REVISED -

**STATE OF ILLINOIS
DEPARTMENT OF TRANSPORTATION**

**UNION COUNTY
LOCATION MAP**

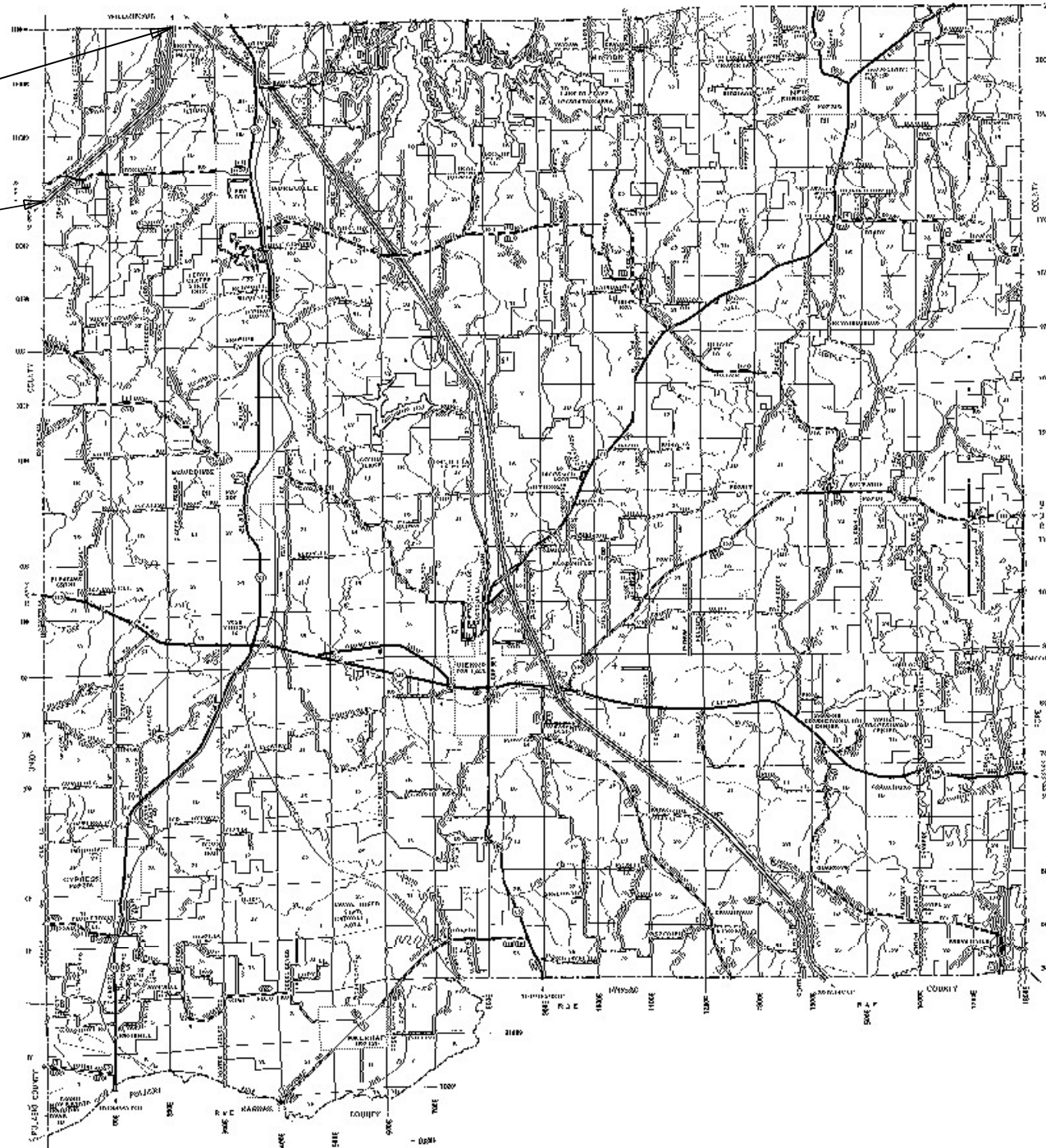
SCALING SCALE SHEET 9 OF 12 SHEETS STA. TO STA.

F.A.I. RTE.	SECTION	COUNTY	TOTAL SHEETS	SHEET NO.
24/57	D9 WEED SPRAY 2023-2	VARIOUS	12	9
CONTRACT NO. 78981				
ILLINOIS FED. AID PROJECT				

JOHNSON COUNTY LOCATION MAP

END LOCATION 4: I-57 AT MP 43.3
JOHNSON/WILLIAMSON COUNTY LINE

BEGIN LOCATION 4: I-57 AT MP 39
UNION/JOHNSON COUNTY LINE



MODEL: JOHNSON_CO-1 (Sheet)
 FILE NAME: p:\ilinois\dot\documents\DOT\Office\District 9\9800 Projects\78981\CADD\data\CAD\sheet\DOT\78981_SVC_LocationMap.dgn

USER NAME = Dacoda.Blockley	DESIGNED -	REVISED -
	DRAWN -	REVISED -
PLOT SCALE = 0.16666633 1/ in.	CHECKED -	REVISED -
PLOT DATE = 10/14/2022	DATE -	REVISED -

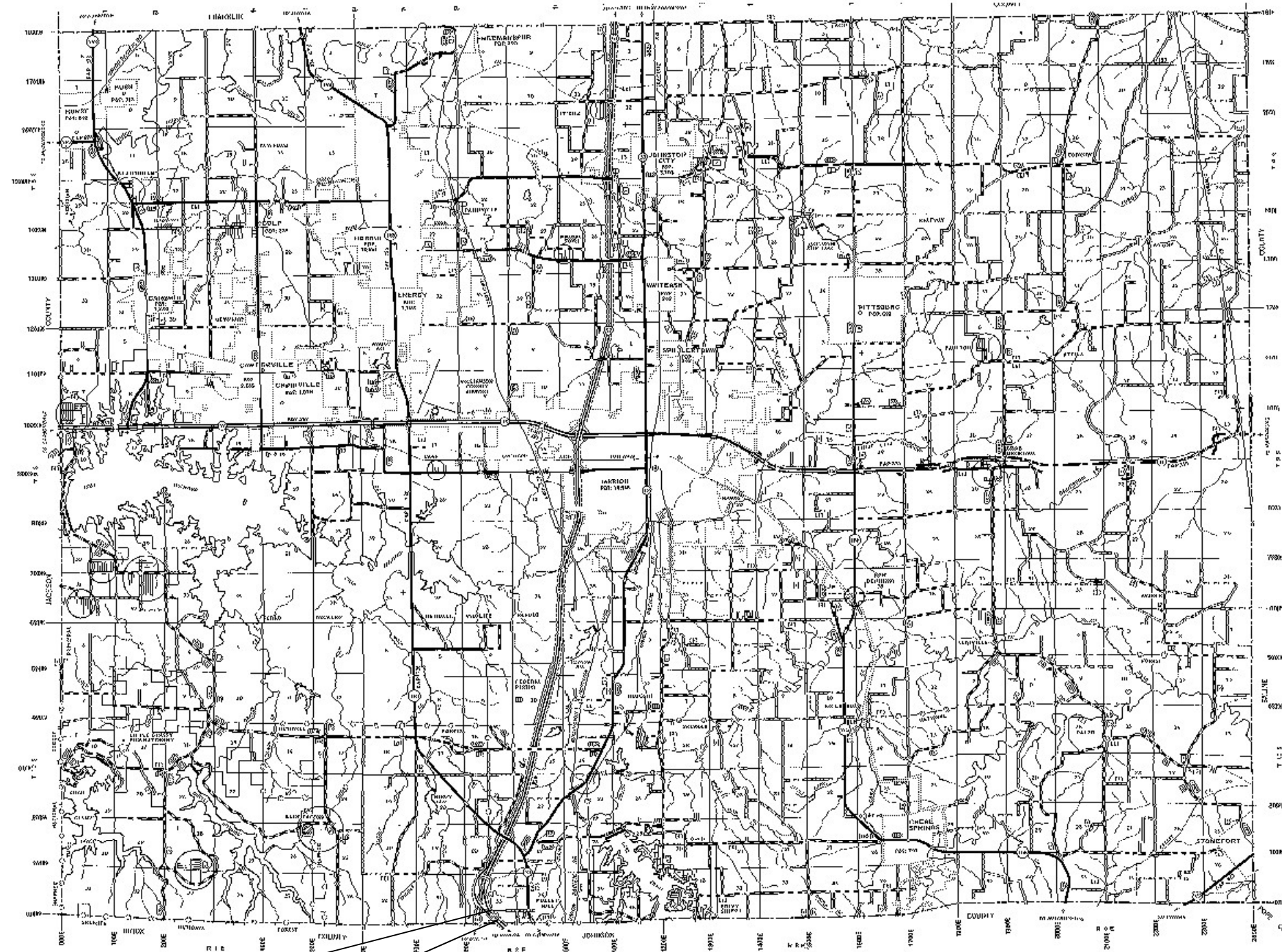
**STATE OF ILLINOIS
DEPARTMENT OF TRANSPORTATION**

**JOHNSON COUNTY
LOCATION MAP**

SCALING SCALE SHEET 10 OF 12 SHEETS STA. TO STA.

F.A.I. RTE.	SECTION	COUNTY	TOTAL SHEETS	SHEET NO.
24/57	D9 WEED SPRAY 2023-2	VARIOUS	12	10
CONTRACT NO. 78981				
ILLINOIS FED. AID PROJECT				

WILLIAMSON COUNTY LOCATION MAP



**BEGIN LOCATION 5: I-24 AT MP 1.6
I-574-24 SPLIT**

**END LOCATION 5: I-24 AT MP 0
JOHNSON-WILLIAMSON COUNTY LINE**

MODEL: JOHNSON_CO-2 (Sheet)
 FILE NAME: p:\illinois\Documents\DOT\Office\District 9\9090 Projects\78981\CADD\data\CAD\Sheets\0978981\574-LocationMap.dgn

USER NAME = Dacoda.Blockley	DESIGNED -	REVISED -
	DRAWN -	REVISED -
PLOT SCALE = 0.16666633 1/ in.	CHECKED -	REVISED -
PLOT DATE = 10/28/2022	DATE -	REVISED -

**STATE OF ILLINOIS
DEPARTMENT OF TRANSPORTATION**

SCALING SCALE SHEET 11 OF 12 SHEETS STA. TO STA.

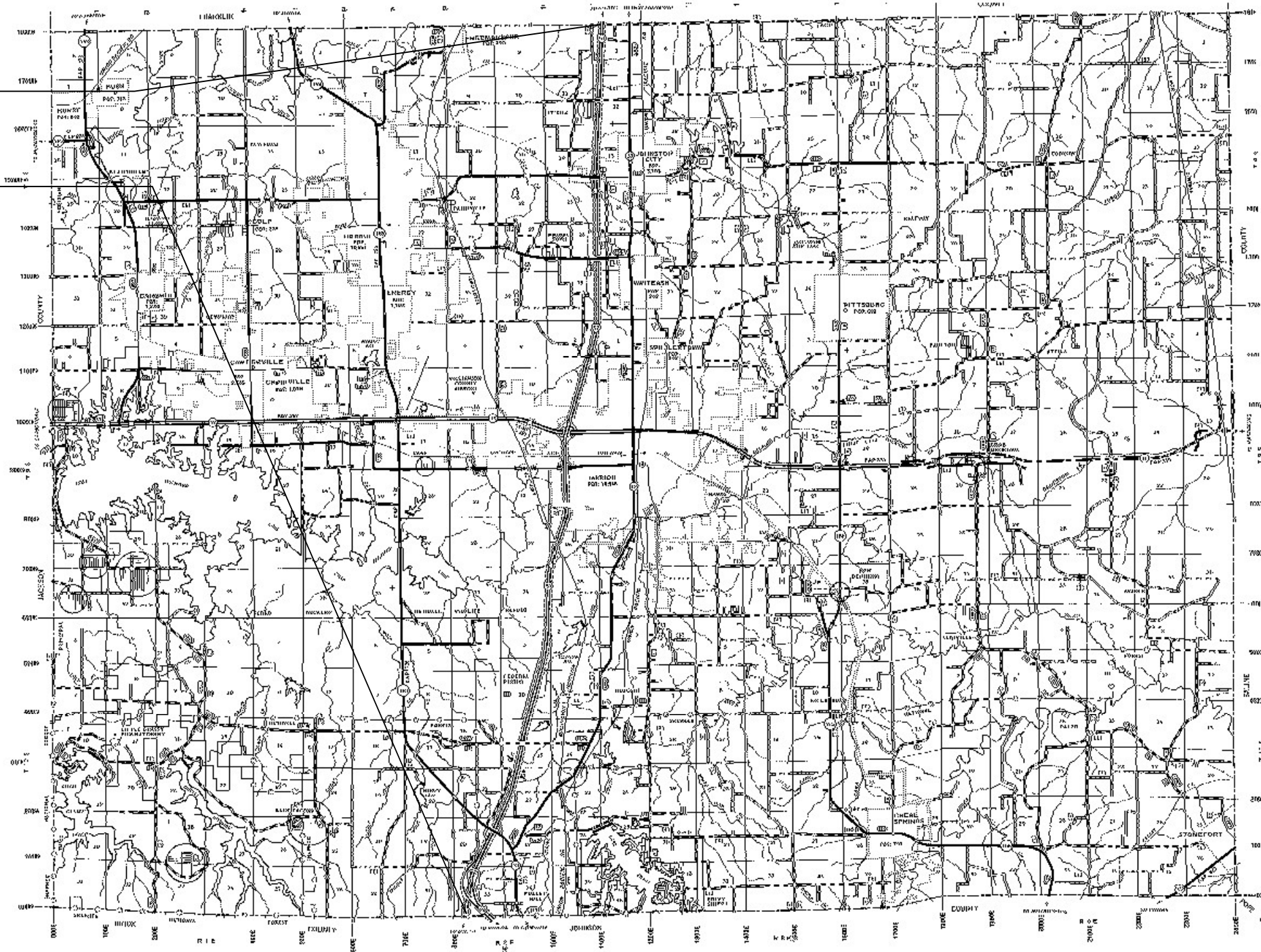
**WILLIAMSON COUNTY
LOCATION MAP**

F.A.I. RTE.	SECTION	COUNTY	TOTAL SHEETS	SHEET NO.
24/57	D9 WEED SPRAY 2023-2	VARIOUS	12	11
CONTRACT NO. 78981				
ILLINOIS FED. AID PROJECT				

WILLIAMSON COUNTY LOCATION MAP

END LOCATION 5: I-57 AT MP 62.1
FRANKLIN/WILLIAMSON COUNTY LINE

BEGIN LOCATION 5: I-57 AT MP 43.3
WILLIAMSON/JOHNSON COUNTY LINE



MODEL: WILLIAMSON_CO_1(Sheet)
 FILE NAME: p:\bls\cadd\bls\com\p\m\dot\Documents\DOT\Office\District 9\9800\Projects\78981\CADD\data\CAD\Sheets\0978981-S\WD-LocationMap.dgn

USER NAME = Dacoda.Blockley	DESIGNED -	REVISED -
	DRAWN -	REVISED -
PLOT SCALE = 0.16666633 1/ in.	CHECKED -	REVISED -
PLOT DATE = 10/14/2022	DATE -	REVISED -

**STATE OF ILLINOIS
DEPARTMENT OF TRANSPORTATION**

**WILLIAMSON COUNTY
LOCATION MAP**

SCALE: SHEET 12 OF 12 SHEETS STA. TO STA.

F.A.I. RTE.	SECTION	COUNTY	TOTAL SHEETS	SHEET NO.
24/57	D9 WEED SPRAY 2023-2	VARIOUS	12	12
CONTRACT NO. 78981				
ILLINOIS FED. AID PROJECT				