

# SUMMARY OF QUANTITIES

CODE NO	ITEM	UNIT	TOTAL QUANTITY	CONSTRUCTION CODE					
				80% FED 20% VILL	80% FED 20% VILL	0% FED 100% VILL	80% FED 20% VILL	80% FED 20% VILL	
				ROADWAY	BRIDGE	BRIDGE	LIGHTING	TRAISEES	
				0028 URBAN	0028 URBAN	0028 URBAN	0028 URBAN	0042 URBAN	
72400500	RELOCATE SIGN PANEL ASSEMBLY - TYPE A	EACH	2	2					
78000400	THERMOPLASTIC PAVEMENT MARKING - LINE 6"	FOOT	69	69					
78000600	THERMOPLASTIC PAVEMENT MARKING - LINE 12"	FOOT	108	108					
80400100	ELECTRIC SERVICE INSTALLATION	EACH	1			1			
80400200	ELECTRIC UTILITY SERVICE CONNECTION	LSUM	1			1			
81100120	CONDUIT ATTACHED TO STRUCTURE, 1/2" DIA. PVC COATED, GALVANIZED STEEL	FOOT	800			800			
81100300	CONDUIT ATTACHED TO STRUCTURE, 1" DIA., GALVANIZED STEEL	FOOT	30			30			
81303500	JUNCTION BOX ATTACHED TO STRUCTURE 10" X 6" X 6"	EACH	4			4			
81603010	UNIT DUCT, 600V, 2-1C NO.10, 1/C NO.10 GROUND, (XLP-TYPE USE), 3/4" DIA. POLYETHYLENE	FOOT	670			670			
81702450	ELECTRIC CABLE IN CONDUIT, 600V (XLP-TYPE USE) 3-1/C NO. 10	FOOT	900			900			
82500330	LIGHTING CONTROLLER PEDESTAL MOUNTED, 240VOLT, 60AMP	EACH	1			1			
83600200	LIGHT POLE FOUNDATION, 24" DIAMETER	FOOT	24			24			
84200500	REMOVAL OF LIGHTING UNIT, SALVAGE	EACH	7			7			
84200804	REMOVAL OF POLE FOUNDATION	EACH	6			6			
A 2006712	TREE, QUERCUS MACROCARPA (BUR OAK), 1-1/2" CALIPER BALLED AND BURLAPPED	EACH	5	5					
* K0035120	MULCH PLACEMENT 4"	SQ YD	68	68					

\* INDICATES SPECIALTY ITEM

STATE OF ILLINOIS - PROFESSIONAL DESIGN FIRM  
 LICENSE NO. - 184-001121 - EXPIRES 4/30/2023  
 1/6/2023 8:43:27 AM  
 ..\Plot\rv\pdf-BW\_Default.plt  
 ..\CAD\Plots\200852\_Pen.tbl  
 I:\Crystal Lake\ELKGR\200852-Clearmont Ped Bridge\CAD\Sheets\200852-sht-SQO\_BAX.dgn  
 I:\Crystal Lake\ELKGR\200852-Clearmont Ped Bridge\CAD\Sheets\200852-sht-SQO\_BAX.dgn



USER NAME = mhiggins	DESIGNED - MLH	REVISED - 01/04/2023
PLOT SCALE = 10.0000' / in.	DRAWN - KAR	REVISED -
PLOT DATE = 1/6/2023	CHECKED - JCC	REVISED -
	DATE - 10/31/2022	FILE - 200852-sht-SQO_BAX.dgn

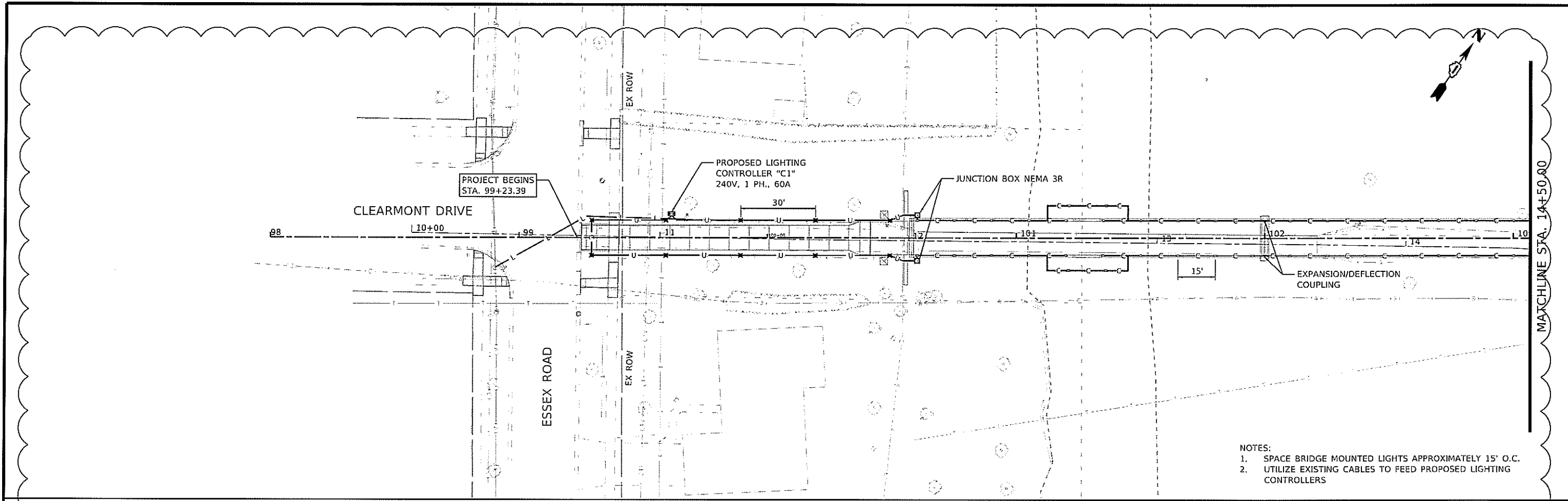
STATE OF ILLINOIS  
DEPARTMENT OF TRANSPORTATION

CLEARMONT PEDESTRIAN BRIDGE OVER SALT CREEK  
SUMMARY OF QUANTITIES

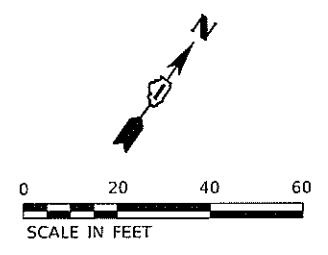
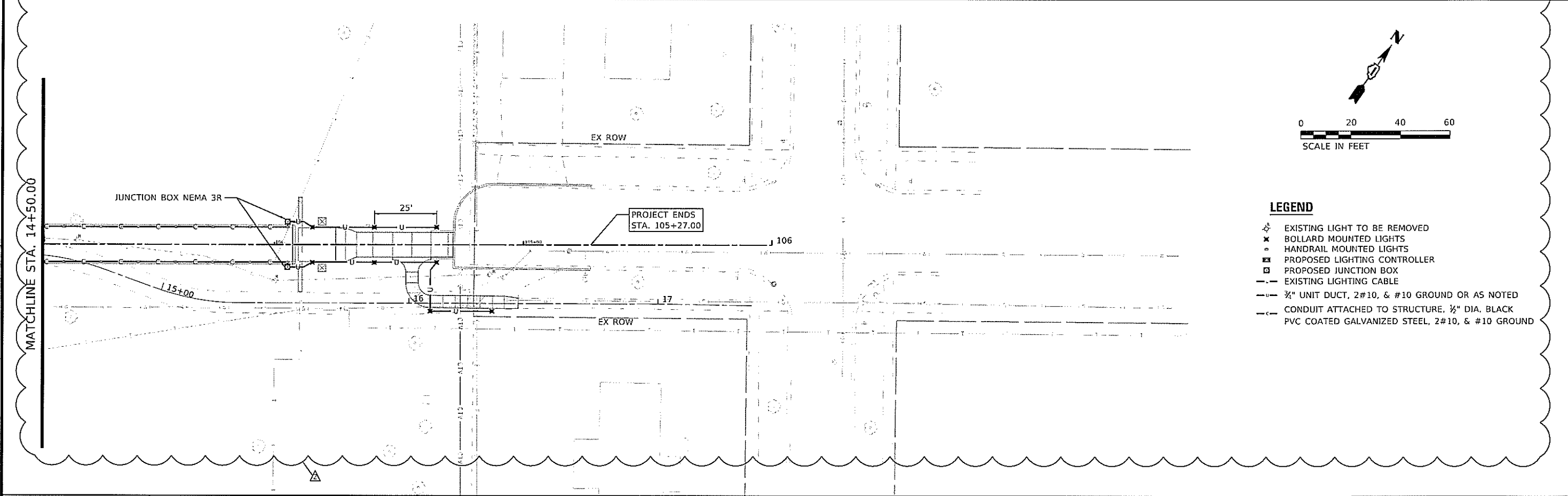
SCALE: SHEET 5 OF 8 SHEETS STA. TO STA.

F.A. RTE.	SECTION	COUNTY	TOTAL SHEETS	SHEET NO.
	18-00066-00-BR	COOK	72	8
			CONTRACT NO. 61J10	
ILLINOIS FED. AID PROJECT				

STATE OF ILLINOIS - PROFESSIONAL DESIGN FIRM  
 LICENSE NO. - 184-001121 - EXPIRES 4/30/2023  
 mhigginson  
 MODEL: Default  
 FILE NAME: I:\Crystal Lake\ELKRA200852-Clearmont Ped Bridge\CAD\Sheets\200852-sht-lighting\_01.dgn



- NOTES:
1. SPACE BRIDGE MOUNTED LIGHTS APPROXIMATELY 15' O.C.
  2. UTILIZE EXISTING CABLES TO FEED PROPOSED LIGHTING CONTROLLERS

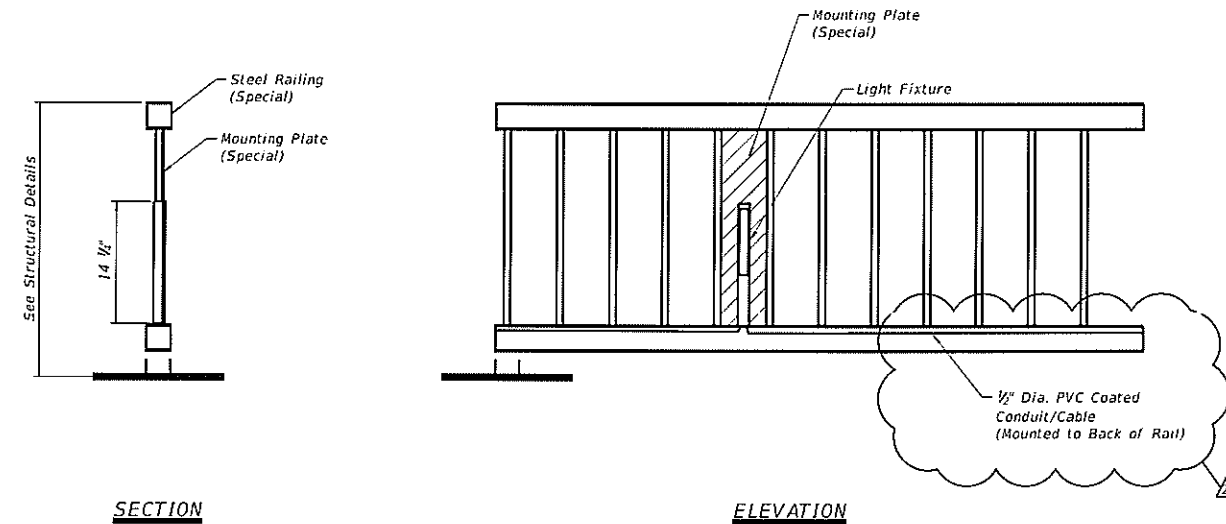


- LEGEND**
- ⊗ EXISTING LIGHT TO BE REMOVED
  - ⊗ BOLLARD MOUNTED LIGHTS
  - HANDRAIL MOUNTED LIGHTS
  - ⊠ PROPOSED LIGHTING CONTROLLER
  - ⊠ PROPOSED JUNCTION BOX
  - EXISTING LIGHTING CABLE
  - 3/4" UNIT DUCT, 2#10, & #10 GROUND OR AS NOTED
  - CONDUIT ATTACHED TO STRUCTURE, 1/2" DIA. BLACK PVC COATED GALVANIZED STEEL, 2#10, & #10 GROUND

<b>BAXTER &amp; WOODMAN</b>	USER NAME = mhigginson	DESIGNED - MLH	REVISED - 01/04/2023	STATE OF ILLINOIS DEPARTMENT OF TRANSPORTATION	CLEARMONT PEDESTRIAN BRIDGE OVER SALT CREEK LIGHTING PLAN		F.A. RTE.	SECTION	COUNTY	TOTAL SHEETS	SHEET NO.
	PLOT SCALE = 40.0000' / in.	DRAWN - KAR	REVISIONS -		SCALE: 1" = 20'	SHEET 1 OF 1 SHEETS	STA. 99+23.39 TO STA. 105+27.00	18-00066-00-BR	COOK	72	34
	PLOT DATE = 1/5/2023	CHECKED - JCC	REVISIONS -				CONTRACT NO. 61J10				
		DATE - 10/31/2022	FILE - 200852-sht-lighting_01.dgn				ILLINOIS FED. AID PROJECT				

**LIGHTING NOTES:**

- ALL CONSTRUCTION SHALL BE DONE IN ACCORDANCE WITH THE DETAILS IN THE PLANS, THE SPECIAL PROVISIONS INCLUDED IN THE CONTRACT DOCUMENTS, AND THE LATEST EDITION OF THE NATIONAL ELECTRICAL CODE (N.E.C.).
- THE LOCATIONS OF PUBLIC OR PRIVATE UTILITIES SHOWN ON THE PLANS ARE APPROXIMATE. THE EXACT LOCATIONS OF ALL UTILITIES SHALL BE VERIFIED BY THE CONTRACTOR BEFORE THE INSTALLATION OF ANY COMPONENTS OF THE LIGHTING SYSTEM. FOR THE LOCATIONS OF THE UTILITIES, CALL JULIE TOLL FREE AT 1-800-892-0123. IT IS THE CONTRACTOR'S RESPONSIBILITY TO LOCATE EXISTING TRAFFIC SIGNAL CABLES AND CONDUITS.
- CONTRACTOR TO TAKE NOTE THAT ELECTRICAL WIRES FOR LIGHTING ON THE BRIDGE ARE TO BE ROUTED INSIDE THE LOWER BRIDGE HANDRAIL (SEE DETAIL).
- FIELD ADJUSTMENT OF LIGHTING UNIT LOCATIONS TO AVOID CONFLICTS MUST BE APPROVED BY THE VILLAGE AND/OR ENGINEER.
- CARE IS TO BE TAKEN AS NOT TO DAMAGE ANY OF THE EXISTING CONDUITS, CONDUCTORS, AND EQUIPMENT TO REMAIN. ANY ITEMS DAMAGED BY THE CONTRACTOR SHALL BE REPAIRED AND/OR REPLACED BY THE CONTRACTOR AT NO COST TO THE VILLAGE.
- THE CONTRACTOR SHALL BE RESPONSIBLE FOR THE ESTABLISHMENT OF FINISHED GRADE. THE RESIDENT ENGINEER MAY ASSIST THE CONTRACTOR, AS APPLICABLE, BUT THE RESPONSIBILITY FOR COORDINATING THE FINISHED GRADE ELEVATION WITH THE TOP OF FOUNDATION HEIGHTS AND THE LIGHT SHALL REMAIN WITH THE CONTRACTOR.
- ANY TURF AND/OR SOIL DISTURBED THAT CANNOT REMAIN OR BE RE-USED SHALL BE REMOVED AND DISPOSED OF BY THE CONTRACTOR AND INCLUDED IN THE COST OF THE ASSOCIATED PAY ITEM.
- ALL DISTURBED AREAS WHERE RESTORATION IS NOT COVERED BY APPLICABLE SECTIONS OF THE SPECIAL PROVISIONS MUST BE RESTORED TO THE SATISFACTION OF THE VILLAGE AND/OR ENGINEER. THE WORK SHALL BE CONSIDERED INCIDENTAL TO THE CONTRACT. SEPARATE PAYMENT WILL NOT BE MADE.
- THE CONTRACTOR SHALL MAKE SPECIAL NOTE OF THE REQUIREMENTS FOR WIRE MARKERS AND SHALL TAG ALL WIRE ACCORDINGLY.
- CONDUIT AND UNIT DUCT MUST BE POSITIONED IN THE FIELD TO AVOID CONFLICT WITH TREES, BUSHES, DRAINS AND OTHER UTILITIES AND LANDSCAPING.
- THE CONTRACTOR SHALL MAKE SPECIAL NOTE OF THE REQUIREMENTS FOR GROUNDING. GROUNDING CONNECTIONS AT THE FOUNDATION SHALL BE EXOTHERMICALLY WELDED, AS SPECIFIED, AND SHALL BE INSPECTED AND APPROVED BY THE VILLAGE AND/OR ENGINEER PRIOR TO BACKFILLING.
- EQUIPMENT GROUND CONDUCTORS SHALL BE SPLICED AND/OR BONDED AT EACH LIGHT POLE OR OTHER PIECE OF EQUIPMENT.
- THE CONTRACTOR SHALL MAKE SPECIAL NOTE OF THE REQUIREMENTS FOR BURIED WARNING TAPE, SPECIFIED AS PART OF "UNDERGROUND RACEWAYS". THE INSTALLATION OF THE TAPE SHALL BE INSPECTED AND APPROVED BY THE ENGINEER PRIOR TO BACKFILLING.
- NO POLES SHALL BE ERECTED UNTIL THE RESPECTIVE FOUNDATIONS HAVE CURED, AS APPROVED BY THE VILLAGE AND/OR ENGINEER.
- ALL CONDUITS UNDER ROADWAYS AND DRIVEWAYS IN TRENCHES SHALL BE INSTALLED BEFORE PAVEMENT IS PLACED. CONDUIT LENGTHS ARE APPROXIMATE. THE CONTRACTOR SHALL VERIFY THE ACTUAL LENGTH REQUIREMENTS IN THE FIELD.
- NO UNDERGROUND SPLICES OR SPLICES IN HANDHOLES WILL BE PERMITTED UNLESS SPECIFICALLY CALLED OUT ON THE PLANS. ELECTRIC HANDHOLES SHALL BE USED FOR THE PURPOSE OF PULLING CABLES ONLY.
- LIGHTING UNIT SETBACK (S.B.) ARE FROM FACE OF CURB TO CENTERLINE OF POLE AND SHALL BE AS CALLED OUT ON PLANS.
- ALL ELECTRICAL DEVICES AND MATERIALS SHALL BE U/L LISTED WHERE APPLICABLE.



SECTION

ELEVATION

RAIL LIGHTING DETAIL  
NO SCALE

**NOTES:**

- MOUNTING PLATE TO BE MADE OF LIKE MATERIAL TO THE BRIDGE RAILING.
- MOUNTING PLATES ARE TO HAVE A POWDERCOAT BLACK FINISH MATCHING THE FINISH OF THE BRIDGE RAILING.
- MOUNTING PLATES ARE TO INCLUDE TABS ON THE BACK SIDE FOR ATTACHING THE LIGHT FIXTURE WITH SCREWS FROM INSIDE THE FIXTURE.
- ATTACH MOUNTING PLATES TO BACK SIDE OF BRIDGE RAIL VERTICAL PICKETS.

**SUMMARY OF QUANTITIES**

ITEM NO.	DESCRIPTION	UNIT	QUANTITY
80400100	ELECTRIC SERVICE INSTALLATION	EACH	1
80400200	ELECTRIC UTILITY SERVICE CONNECTION	LSUM	1
81100120	CONDUIT ATTACHED TO STRUCTURE, 1/2" DIA., PVC COATED	FOOT	800
81303500	JUNCTION BOX ATTACHED TO STRUCTURE 10" X 6" X 6"	EACH	4
81603010	UNIT DUCT 600V, 2-1/4 NO. 10, 1/4 NO. 10 GROUND, (XLP-TYPE USE), 3/4" DIA. POLYETHYLENE	FOOT	670
81702450	ELECTRIC CABLE IN CONDUIT, 600V (XLP-TYPE USE) 3-1/4 NO. 10	FOOT	900
82500330	LIGHTING CONTROLLER, PEDESTAL MOUNTED, 240VOLT, 60AMP	EACH	1
83600200	LIGHT POLE FOUNDATION 24" DIAMETER	FOOT	24
84200500	REMOVAL OF LIGHTING UNIT, SALVAGE	EACH	7
84200804	REMOVAL OF POLE FOUNDATION	EACH	6
X0324050	BOLLARD LED	EACH	18
X0327739	MISCELLANEOUS ELECTRICAL WORK	LSUM	1
X1400431	LIGHTING ASSEMBLY (SPECIAL)	EACH	52

STATE OF ILLINOIS - PROFESSIONAL DESIGN FIRM  
 LICENSE NO. - 184-001121 - EXPIRES 4/30/2023  
 mhlgghinson  
 MODEL: Detail  
 FILE NAME: I:\Crystal Lake\ELKGR\200852-Clearmont Ped Bridge\CAD\Sheets\200852-shl-lighting\_details.dgn



USER NAME = mhlgghinson	DESIGNED - MLH	REVISED - 01/04/2023
PLOT SCALE = 40,0000' / 1 in.	DRAWN - KAR	REVISED -
PLOT DATE = 1/5/2023	CHECKED - JCC	REVISED -
	DATE - 10/31/2022	FILE - 200852-shl-lighting_details.dgn

STATE OF ILLINOIS  
DEPARTMENT OF TRANSPORTATION

CLEARMONT PEDESTRIAN BRIDGE OVER SALT CREEK  
LIGHTING DETAILS

SCALE: NONE SHEET 1 OF 3 SHEETS STA. TO STA.

F.A. RTE.	SECTION	COUNTY	TOTAL SHEETS	SHEET NO.
	18-00066-00-BR	COOK	72	35
CONTRACT NO. 6J110			ILLINOIS FED. AID PROJECT	