

STATE OF ILLINOIS
DEPARTMENT OF TRANSPORTATION
DIVISION OF HIGHWAYS

**PROPOSED
HIGHWAY PLANS**

FAP ROUTE 34 (IL 97)
SECTION 1RS-7, 2RS-3, 2B-1(BDR,BRR)
PROJECT STP-HBFP-LTIB(015)
3P RESURFACING & BRIDGE DECK OVERLAY
MASON COUNTY

C-96-095-14

| F.A.P. RTE. | SECTION | COUNTY | TOTAL SHEETS | SHEET NO. |
|---------------------------------|---------|----------|--------------------|-----------|
| 34 | ... | MENARD | 25 | 1 |
| | | ILLINOIS | CONTRACT NO. 72H24 | |
| ... IRS-7, 2RS-3, 2B-1(BDR,BRR) | | | | |

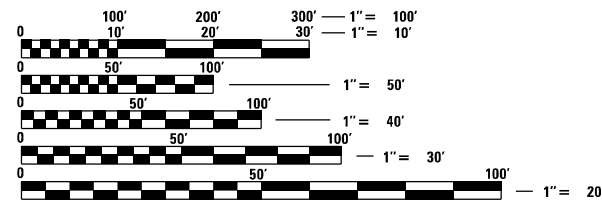
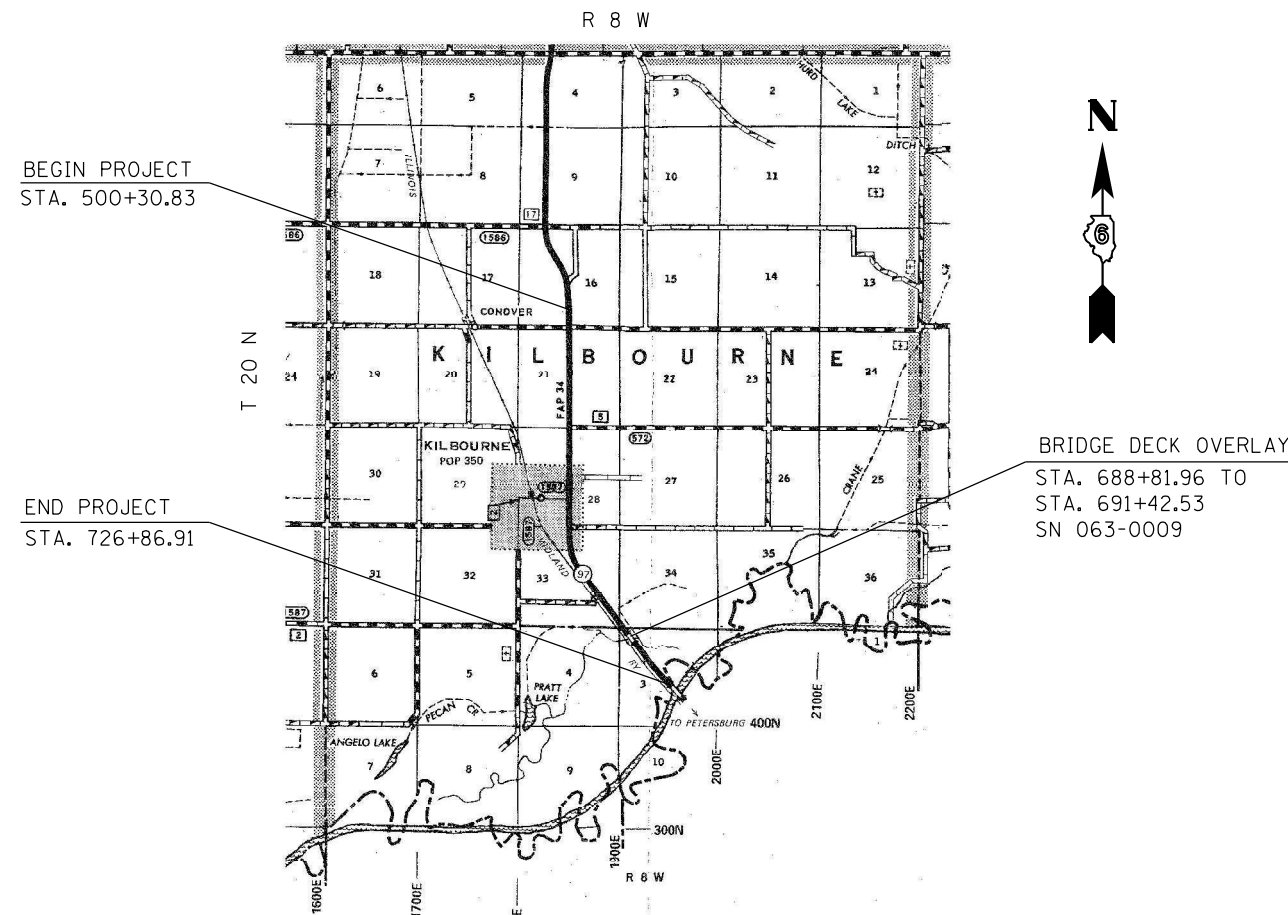
D-96-095-14



HIGHWAY CLASSIFICATION

F.A.P ROUTE 34 (IL 97)
CLASSIFICATION MINOR ARTERIAL

ADT = 1717 (2021)
PV = 90.99 %
SU = 4.35 %
MU = 4.66 %



FULL SIZE PLANS HAVE BEEN PREPARED USING STANDARD ENGINEERING SCALES. REDUCED SIZED PLANS WILL NOT CONFORM TO STANDARD SCALES. IN MAKING MEASUREMENTS ON REDUCED PLANS, THE ABOVE SCALES MAY BE USED.

J.U.L.I.E.
JOINT UTILITY LOCATION INFORMATION FOR EXCAVATION
1-800-892-0123
OR 811

PROJECT ENGINEER: JAY EDWARDS (217) 785-0597
PROJECT MANAGER: JONATHAN COX (217) 782-1378

CONTRACT NO.72H24

GROSS LENGTH = 22,656.08 FEET = 4.29 MILES
NET LENGTH = 22,395.51 FEET = 4.29 MILES

STATE OF ILLINOIS
DEPARTMENT OF TRANSPORTATION
DIVISION OF HIGHWAYS

SUBMITTED October 21, 2022

Jay P. Myers
REGIONAL ENGINEER

December 9, 2022
Steph M. Smith
ENGINEER OF DESIGN AND ENVIRONMENT

December 9, 2022
Steph M. Smith
DIRECTOR OF HIGHWAYS PROJECT IMPLEMENTATION

**PRINTED BY THE AUTHORITY
OF THE STATE OF ILLINOIS**

STANDARDS

| | |
|-----------|--------------------------------------------------------------------------------------------|
| 000001-08 | STANDARD SYMBOLS, ABBREVIATIONS, AND PATTERNS |
| 542401-04 | METAL FLARED END SECTION FOR PIPE CULVERT |
| 606001-08 | CONCRETE CURB TYPE B AND COMBINATION CONCRETE CURB AND GUTTER |
| 610001-09 | SHOULDER INLET WITH CURB |
| 630001-12 | STEEL PLATE BEAM GUARDRAIL |
| 630301-09 | SHOULDER WIDENING FOR TYPE 1 (SPECIAL) GUARDRAIL TERMINALS |
| 631031-18 | TRAFFIC BARRIER TERMINAL, TYPE 6 |
| 701001-02 | OFF ROADS OPERATIONS, 2L, 2W, MORE THAN 15' AWAY FROM PAVEMENT EDGE |
| 701006-05 | OFF ROADS OPERATIONS, 2L, 2W, 15'-24' FROM PAVEMENT EDGE |
| 701011-04 | OFF ROAD MOVING OPERATIONS 2L, 2W, DAY ONLY |
| 701201-05 | LANE CLOSURE 2L, 2W DAY ONLY, FOR SPEEDS \geq 45 MPH |
| 701301-04 | LANE CLOSURE 2L, 2W SHORT TERM OPERATIONS |
| 701306-04 | LANE CLOSURE 2L, 2W SLOW MOVING OPERATIONS - DAY ONLY FOR SPEEDS \geq OR EQUAL TO 45 MPH |
| 701311-03 | LANE CLOSURE, 2L, 2W, MOVING OPERATIONS DAY ONLY |
| 701316-13 | LANE CLOSURE, 2L, 2W, BRIDGE REPAIR, FOR SPEEDS \geq 45 MPH |
| 701901-08 | TRAFFIC CONTROL DEVICES |
| 725001-01 | OBJECT AND TERMINAL MARKERS |
| 780001-05 | TYPICAL PAVEMENT MARKINGS |
| 782006-01 | GUARDRAIL AND BARRIER WALL REFLECTOR MOUNTING DETAIL |
| 781001-04 | TYPICAL APPLICATIONS RAISED REFLECTIVE PAVEMENT MARKERS |
| 001006 | DECIMAL OF AN INCH AND OF A FOOT |
| 420001-10 | PAVEMENT JOINTS |

INDEX OF SHEETS

| | |
|-------|--------------------------------------------------------------------|
| 1 | COVER SHEET |
| 2 | INDEX OF SHEETS, LISTS OF STANDARDS, GENERAL NOTES AND COMMITMENTS |
| 3-4 | SUMMARY OF QUANTITIES (2) |
| 5-7 | SCHEDULE OF QUANTITIES (3) |
| 8-9 | TYPICAL SECTIONS (2) |
| 10-18 | PLAN SHEETS (9) |
| 19 | STAGING TYPICAL |
| 20-22 | BRIDGE PLANS (3) |
| 23 | MAX WIDTH SIGN DETAIL |
| 24-25 | ENTRANCES & SIDE ROADS (2) |

GENERAL NOTES

1 THE FOLLOWING MIXTURE REQUIREMENTS ARE APPLICABLE

| LOCATIONS: | IL 97 | IL 97 | IL 97 | SIDEROADS & ENTR. |
|-----------------------------------------|----------------------|----------------------|----------------------|----------------------|
| MIXTURE USE(S): | HMA SURF CSE | HMA BINDER CSE | HMA SHOULDERS | INCIDENTAL HMA SURF |
| AC/PG: | PG 58-28 | PG 58-28 | PG 58-28 | PG 64-22 |
| DESIGN AIR VOIDS | 4.0% @ N DESIGN = 50 | 4.0% @ N DESIGN = 50 | 4.0% @ N DESIGN = 50 | 4.0% @ N DESIGN = 50 |
| MIXTURE COMPOSITION (GRADATION MIXTURE) | IL 9.5 | IL 9.5FG | IL 9.5 | IL 9.5 |
| FRICITION AGGREGATE | MIX "C" | N/A | MIX "C" | MIX "C" |
| QUALITY MANAGEMENT | QCP | QCP | QC/QA | QC/QA |
| SUBLOT SIZE | 1,000 TONS | 1,000 TONS | N/A | N/A |
| MTD | YES | NO | NO | N/A |

NOTE:

- QCP APPLIES TO MAINLINE ONLY.
- "NO PASSING ZONES" TO BE FIELD VERIFIED BY THE BUREAU OF OPERATIONS, THE RESIDENT ENGINEER SHALL NOTIFY THE BUREAU OF OPERATIONS AT LEAST 14 DAYS PRIOR TO PLACEMENT OF FINAL PERMANENT MARKING. (PH: 217-785-5312)
- NUCLEAR GAUGES WILL BE USED FOR DENSITY VERIFICATION BY ENGINEER FOR HMA SHOULDERS
- SYNTHETIC FIBERS ARE NOT REQUIRED IN BRIDGE DEKC MICROSILICA CONCRETE OVERLAY
- IF FULL PATCHES ARE NEEDED DURING BRIDGE REPAIR OPERATIONS A STEEL PLATE WILL BE NEEDED TO COVER THE PATCH

RATE TABLE

THE FOLLOWING RATES OF APPLICATION HAVE BEEN ASSUMED IN CALCULATING PLAN QUANTITIES.

| | |
|-----------------------------------|-----------------------------|
| BITUMINOUS MATERIALS (TACK COAT): | 0.05 LBS/SQ FT (MILLING) |
| | 0.025 LBS/SQ FT (HMA LIFTS) |
| HMA SURFACE MIX "C": | 0.056 TONS/SQ YD |
| AGGREGATE SHOULDERS: | 1.60 TONS/CU YD |

**STATE OF ILLINOIS
DEPARTMENT OF TRANSPORTATION
DIVISION OF HIGHWAYS
DISTRICT 6**

EXAMINED October 21 2022

[Signature]

ENGINEER OF OPERATIONS

EXAMINED October 17 2022

[Signature]

ENGINEER OF PROJECT IMPLEMENTATION

EXAMINED October 17 2022

[Signature]

ENGINEER OF PROGRAM DEVELOPMENT

REV. - MS

M:\E:\Default\p\blidat-cw-behntfy.com\PHWDOT\Documents\DOT Offices\District 6\Projects\067242\CAD\Drawings\067242\411-10-nmots.dgn

| | | |
|------------------------------|------------|-----------|
| USER NAME = andrew.cisler | DESIGNED - | REVISED - |
| | DRAWN - | REVISED - |
| PLOT SCALE = 100.0004' / in. | CHECKED - | REVISED - |
| PLOT DATE = 10/21/2022 | DATE - | REVISED - |

**STATE OF ILLINOIS
DEPARTMENT OF TRANSPORTATION**

**INDEX OF SHEETS &
HIGHWAY STANDARDS**

SCALE: SHEET 1 OF 1 SHEETS STA. TO STA.

| F.A.P. RTE. | SECTION | COUNTY | TOTAL SHEETS | SHEET NO. |
|---------------------------|---------|--------|--------------|-----------|
| 34 | * | MASON | 25 | 2 |
| CONTRACT NO. 72H24 | | | | |
| ILLINOIS FED. AID PROJECT | | | | |

+1RS-7, 2RS-3, 2B-1(BDR,BRR)

MODEL: Default
 FILE: \\mdele-pro-builder-cw-behntfy.com\PHWDOT\Documents\DOT Office\Bdr\frt_6\Projects\067242\CAD\Bdr\frt_6\067242.rvt-500.dgn

| CODE NO. | ITEM | UNIT | TOTAL QUANTITY | 6-00532-0000 | 6-00532-0100 |
|----------|------------------------------------------------------|-------|----------------|--------------|--------------|
| | | | | 80% FEDERAL | 80% FEDERAL |
| | | | | 20% STATE | 20% STATE |
| | | | | ROADWAY | BRIDGE |
| | | | | 0005 | 0047 |
| | | | | RURAL | 063-0009 |
| 28100107 | STONE RIPRAP, CLASS A4 | SQ YD | 1029 | 1029 | |
| 28200200 | FILTER FABRIC | SQ YD | 1029 | 1029 | |
| 35800100 | PREPARATION OF BASE | SQ YD | 837 | 837 | |
| 40200800 | AGGREGATE SURFACE COURSE, TYPE B | TON | 170 | 170 | |
| 40600290 | BITUMINOUS MATERIALS (TACK COAT) | POUND | 44327 | 44327 | |
| 40600370 | LONGITUDINAL JOINT SEALANT | FOOT | 22396 | 22396 | |
| 40600982 | HOT-MIX ASPHALT SURFACE REMOVAL - BUTT JOINT | SQ YD | 3538 | 3538 | |
| 40600990 | TEMPORARY RAMP | SQ YD | 232 | 232 | |
| 40602965 | HOT-MIX ASPHALT BINDER COURSE, IL-9.5FG, N50 | TON | 4529 | 4529 | |
| 40604050 | HOT-MIX ASPHALT SURFACE COURSE, IL-9.5, MIX "C", N50 | TON | 5435 | 5435 | |
| 40800029 | BITUMINOUS MATERIALS (TACK COAT) | POUND | 1636 | 1636 | |
| 40800050 | INCIDENTAL HOT-MIX ASPHALT SURFACING | TON | 727 | 727 | |
| 44000155 | HOT-MIX ASPHALT SURFACE REMOVAL, 1 1/2" | SQ YD | 65449 | 65449 | |
| 44000500 | COMBINATION CURB AND GUTTER REMOVAL | FOOT | 80 | 80 | |

| CODE NO. | ITEM | UNIT | TOTAL QUANTITY | 6-00532-0000 | 6-00532-0100 |
|------------|----------------------------------------------------|-------|----------------|--------------|--------------|
| | | | | 80% FEDERAL | 80% FEDERAL |
| | | | | 20% STATE | 20% STATE |
| | | | | ROADWAY | BRIDGE |
| | | | | 0005 | 0047 |
| | | | | RURAL | 063-0009 |
| 44004250 | PAVED SHOULDER REMOVAL | SQ YD | 14 | 14 | |
| 48102100 | AGGREGATE WEDGE SHOULDER, TYPE B | TON | 1106 | 1106 | |
| 48203100 | HOT-MIX ASPHALT SHOULDERS | TON | 75 | 75 | |
| 48300400 | PORTLAND CEMENT CONCRETE SHOULDERS 9" | SQ YD | 14 | 14 | |
| 50300260 | BRIDGE DECK GROOVING | SQ YD | 867 | | 867 |
| 50300300 | PROTECTIVE COAT | SQ YD | 923 | | 923 |
| 54262712 | METAL FLARED END SECTIONS 12" | EACH | 4 | 4 | |
| 60100945 | PIPE DRAINS 12" | FOOT | 48 | 48 | |
| 60600605 | CONCRETE CURB, TYPE B | FOOT | 30 | 30 | |
| 60607400 | COMBINATION CONCRETE CURB AND GUTTER, TYPE B-9.24 | FOOT | 120 | 120 | |
| 61000335 | TYPE G INLET BOX, STANDARD 610001 | EACH | 4 | 4 | |
| * 63000001 | STEEL PLATE BEAM GUARDRAIL, TYPE A, 6 FOOT POSTS | FOOT | 1038 | 1038 | |
| * 63100085 | TRAFFIC BARRIER TERMINAL, TYPE 6 | EACH | 6 | 6 | |
| * 63100167 | TRAFFIC BARRIER TERMINAL, TYPE 1 (SPECIAL) TANGENT | EACH | 6 | 6 | |

* SPECIALTY ITEM

REV. - MS

| | | | | | | | | | | | |
|-------------------------------|------------|-----------|-----------------------------------------------------------|-----------------------------------------|--|--|---------------------------|---------|--------|--------------|-----------|
| USER NAME = andrew.cisler | DESIGNED - | REVISED - | STATE OF ILLINOIS DEPARTMENT OF TRANSPORTATION | SUMMARY OF QUANTITIES | | | F.A.P. RTE. | SECTION | COUNTY | TOTAL SHEETS | SHEET NO. |
| DRAWN - | REVISIED - | 34 | | | | | * | MASON | 25 | 3 | |
| PLOT SCALE = 100,0000 ' / in. | CHECKED - | REVISED - | | SCALE: SHEET 1 OF 2 SHEETS STA. TO STA. | | | CONTRACT NO. 72H24 | | | | |
| PLOT DATE = 10/21/2022 | DATE - | REVISED - | | | | | ILLINOIS FED. AID PROJECT | | | | |

+1R5-7, 2R5-3, 2B-1(BDR,BRR)

| CODE NO. | ITEM | UNIT | TOTAL QUANTITY | 6-00532-0000 | 6-00532-0100 |
|------------|-------------------------------------------------|--------|----------------|--------------|--------------|
| | | | | 80% FEDERAL | 80% FEDERAL |
| | | | | 20% STATE | 20% STATE |
| | | | | ROADWAY | BRIDGE |
| 0005 | 0047 | | | | |
| | | | | RURAL | 063-0009 |
| 63200310 | GUARDRAIL REMOVAL | FOOT | 1413 | 1413 | |
| 67000400 | ENGINEER'S FIELD OFFICE, TYPE A | CAL MO | 12 | 11 | 1 |
| 67100100 | MOBILIZATION | L SUM | 1 | 0.9 | 0.1 |
| 70100100 | TRAFFIC CONTROL AND PROTECTION, STANDARD 701316 | EACH | 1 | | 1 |
| 70100450 | TRAFFIC CONTROL AND PROTECTION, STANDARD 701201 | L SUM | 1 | 1 | |
| 70100460 | TRAFFIC CONTROL AND PROTECTION, STANDARD 701306 | L SUM | 1 | 1 | |
| 70106500 | TEMPORARY BRIDGE TRAFFIC SIGNALS | EACH | 1 | | 1 |
| 70106700 | TEMPORARY RUMBLE STRIPS | EACH | 6 | | 6 |
| 70107025 | CHANGEABLE MESSAGE SIGN | CAL DA | 30 | | 30 |
| 70300100 | SHORT TERM PAVEMENT MARKING | FOOT | 6797 | 6797 | |
| 70300150 | SHORT TERM PAVEMENT MARKING REMOVAL | SQ FT | 755 | 755 | |
| * 72501000 | TERMINAL MARKER - DIRECT APPLIED | EACH | 6 | 6 | |
| * 78001120 | PAINT PAVEMENT MARKING - LINE 5" | FOOT | 67139 | 67139 | |
| * 78100100 | RAISED REFLECTIVE PAVEMENT MARKER | EACH | 280 | 280 | |

* SPECIALTY ITEM

| CODE NO. | ITEM | UNIT | TOTAL QUANTITY | 6-00532-0000 | 6-00532-0100 |
|------------|----------------------------------------------------------------------|-------|----------------|--------------|--------------|
| | | | | 80% FEDERAL | 80% FEDERAL |
| | | | | 20% STATE | 20% STATE |
| | | | | ROADWAY | BRIDGE |
| 0005 | 0047 | | | | |
| | | | | RURAL | 063-0009 |
| 78200005 | GUARDRAIL REFLECTORS, TYPE A | EACH | 24 | 24 | |
| 78300200 | RAISED REFLECTIVE PAVEMENT MARKER REMOVAL | EACH | 280 | 280 | |
| X6050700 | REMOVE INLET BOX | EACH | 4 | 4 | |
| X7200201 | WIDTH RESTRICTION SIGNING | L SUM | 1 | | 1 |
| Z0012130 | BRIDGE DECK SCARIFICATION 3/4" | SQ YD | 923 | | 923 |
| Z0012164 | BRIDGE DECK MICROSILICA CONCRETE OVERLAY 2 1/2" | SQ YD | 923 | | 923 |
| Z0012754 | STRUCTURAL REPAIR OF CONCRETE (DEPTH EQUAL TO OR LESS THAN 5 INCHES) | SQ FT | 20 | | 20 |
| Z0016002 | DECK SLAB REPAIR (FULL DEPTH, TYPE II) | SQ YD | 5 | | 5 |
| Ø Z0076600 | TRAINEES | hour | 1500 | 1500 | |
| Z0034105 | MATERIAL TRANSFER DEVICE | TON | 5435 | 5435 | |
| Ø Z0076604 | TRAINEES TRAINING PROGRAM GRADUATE | hour | 1500 | 1500 | |
| Z0041895 | POLYMER CONCRETE | CU FT | 4 | | 4 |

Ø 0042

MOEEL: Default
FILE: \\nas01-01\benlby.com\PHWDOT\Documents\DOT Offices\Bentley 6\Projects\067242\CA00Data\CAD\Sheets\067242\PH-500.dgn

REV. - MS

| | | | | | | | | | | | |
|------------------------------|------------|-----------|-----------------------------------------------------------|-----------------------------------------|--|--|---------------------------|---------|--------|--------------|-----------|
| USER NAME = andrew.cisler | DESIGNED - | REVISED - | STATE OF ILLINOIS DEPARTMENT OF TRANSPORTATION | SUMMARY OF QUANTITIES | | | F.A.P. RTE. | SECTION | COUNTY | TOTAL SHEETS | SHEET NO. |
| DRAWN - | REVISED - | 34 | | | | | * | MASON | 25 | 4 | |
| PLOT SCALE = 100,0007' / in. | CHECKED - | REVISED - | | SCALE: SHEET 2 OF 2 SHEETS STA. TO STA. | | | CONTRACT NO. 72H24 | | | | |
| PLOT DATE = 10/21/2022 | DATE - | REVISED - | | | | | ILLINOIS FED. AID PROJECT | | | | |

+1R5-7, 2R5-3, 2B-1(BDR,BRR)

| RIPRAP SCHEDULE | | | | 28100107 | 28200200 | | |
|------------------|----|------------------|--------|----------|----------|-----------------------|---------------|
| LOCATION | | | | LENGTH | WIDTH | STONE RIPRAP CLASS A4 | FILTER FABRIC |
| | | | | (FOOT) | (FOOT) | (SQYD) | (SQYD) |
| LT STA 685+44.30 | TO | LT STA 688+81.96 | 337.66 | 10.0 | 375.2 | 375.2 | |
| RT STA 686+43.96 | TO | RT STA 688+81.96 | 238.00 | 10.0 | 264.4 | 264.4 | |
| RT STA 691+42.53 | TO | RT STA 692+80.37 | 137.84 | 10.0 | 153.2 | 153.2 | |
| LT STA 691+42.53 | TO | LT STA 693+55.20 | 212.67 | 10.0 | 236.3 | 236.3 | |
| TOTAL : | | | | | | 1,029 | 1,029 |

| HOT-MIX ASPHALT SURFACE REMOVAL | | | | | 44000155 | 40600990 | | |
|---------------------------------------------------|----|---------------|-----------|----|---------------|------------|--------------------------|----------------|
| LOCATION | | | | | LENGTH | WIDTH | HMA SURF REMOVAL, 1 1/2" | TEMPORARY RAMP |
| | | | | | (FOOT) | (FOOT) | (SQ YD) | (SQ YD) |
| STA 500+30.83 | TO | STA 685+15.00 | 18,484.17 | 26 | 53,398.7 | 14.4 | | |
| STA 685+15.00 | TO | STA 688+81.96 | 366.96 | 32 | 1,304.7 | 14.4 | | |
| BRIDGE OMISSION: STA 688+81.96 TO STA 691+42.53 | | | | | | | | |
| STA 691+42.53 | TO | STA 695+15.00 | 372.47 | 32 | 1,324.3 | 17.8 | | |
| STA 695+15.00 | TO | STA 723+00.00 | 2,785.00 | 26 | 8,045.6 | | | |
| STA 723+00.00 | TO | STA 726+86.91 | 386.91 | 32 | 1,375.7 | 17.8 | | |
| TEMP RAMPS FOR ENTRANCES (SEE ENTRANCE SCHEDULE.) | | | | | | | | |
| TOTALS : | | | | | 65,449 | 232 | | |

| PAVING SCHEDULE | | | | 40602965 | 40604050 | 40600290 | 40200800 | 40600370 | | | |
|-------------------------------------------------|----|---------------|-----------|----------|----------|--------------|-----------------|-------------------|-------------------|-------------------|--------------------|
| LOCATION | | | | LENGTH | WIDTH | HMA BC | HMA SURF COURSE | BIT MAT MATERIALS | BIT MAT MATERIALS | AGGREGATE SURFACE | LONG JOINT SEALANT |
| | | | | (FOOT) | (FOOT) | (TON) | (TON) | (POUNDS) | (POUNDS) | (TON) | (FOOT) |
| STA 500+30.83 | TO | STA 685+15.00 | 18,484.17 | 26 | 3,737.9 | 4,485.5 | 24,029.4 | 12,014.7 | 106.8 | 18,484.2 | |
| STA 685+15.00 | TO | STA 688+81.96 | 366.96 | 26 | 74.2 | 89.0 | 477.0 | 238.5 | 2.1 | 367.0 | |
| BRIDGE OMISSION: STA 688+81.96 TO STA 691+42.53 | | | | | | | | | | | |
| STA 691+42.53 | TO | STA 695+15.00 | 372.47 | 26 | 75.3 | 90.4 | 484.2 | 242.1 | 2.2 | 372.5 | |
| STA 695+15.00 | TO | STA 723+00.00 | 2,785.00 | 26 | 563.2 | 675.8 | 3,620.5 | 1,810.3 | 16.1 | 2,785.0 | |
| STA 723+00.00 | TO | STA 726+86.91 | 386.91 | 26 | 78.2 | 93.9 | 503.0 | 251.5 | 2.2 | 386.9 | |
| TACK COAT FOR SHOULDERS | | | | | | | 218.8 | 109.4 | | | |
| SUB TOTAL : | | | | | | | 29,333.0 | 14,666.5 | | | |
| TOTALS : | | | | | | 4,529 | 5,435 | 43,999 | 129 | 22,396 | |

| AGGREGATE WEDGE SHOULDER, TYPE B | | | | | | | 48102100 |
|-------------------------------------------------|--------|---------------|-----------|------|--------|------|--------------------|
| LOCATION | | | | | | | AGG WEDGE SHOULDER |
| LENGTH | WIDTH | AREA | AVE THICK | | | | |
| (FOOT) | (FOOT) | (SQ YD) | (IN) | | | | |
| STA 500+30.83 | TO | STA 685+15.00 | 18,484.17 | 4.00 | 8215.2 | 1.25 | 912.8 |
| STA 685+15.00 | TO | STA 688+81.96 | 366.96 | 4.00 | 163.1 | 1.25 | 18.1 |
| BRIDGE OMISSION: STA 688+81.96 TO STA 691+42.53 | | | | | | | |
| STA 691+42.53 | TO | STA 695+15.00 | 372.47 | 4.00 | 165.5 | 1.25 | 18.4 |
| STA 695+15.00 | TO | STA 723+00.00 | 2,785.00 | 4.00 | 1237.8 | 1.25 | 137.5 |
| STA 723+00.00 | TO | STA 726+86.91 | 386.91 | 4.00 | 172.0 | 1.25 | 19.1 |
| TOTAL : | | | | | | | 1,106 |

| | | | | 60600605 |
|-----------------|----|---------------|-------|--------------------------|
| LOCATION | | | | CON. CURB, TYPE B (FOOT) |
| STA 726+71.91 | TO | STA 726+86.91 | LT/RT | 15 |
| TOTALS : | | | | 30 |

| HOT-MIX ASPHALT SHOULDERS | | | | | 48203100 | 40600290 | |
|---------------------------|--------|------------------|----------|----------|------------|-------------------|-------------------|
| LOCATION | | | | | HMA SHLDRS | BIT MAT MATERIALS | BIT MAT MATERIALS |
| | | | | | LENGTH | WIDTH | TC |
| (FOOT) | (FOOT) | (TONS) | (POUNDS) | (POUNDS) | MILLING | HMA LIFT | |
| LT STA 691+72.53 | TO | LT STA 695+15.00 | 342.47 | 3.0 | 17.6 | 51.4 | 25.7 |
| RT STA 691+72.53 | TO | RT STA 695+15.00 | 342.47 | 3.0 | 17.6 | 51.4 | 25.7 |
| LT STA 723+00.00 | TO | LT STA 726+86.91 | 386.91 | 3.0 | 19.9 | 58.0 | 29.0 |
| RT STA 723+00.00 | TO | RT STA 726+86.91 | 386.91 | 3.0 | 19.9 | 58.0 | 29.0 |
| TOTAL : | | | | | 75 | 328 | |

STATE OF ILLINOIS
DEPARTMENT OF TRANSPORTATION

SCHEDULE OF QUANTITIES

| F.A.P. RTE. | SECTION | COUNTY | TOTAL SHEETS | SHEET NO. |
|---------------------------|---------|--------|--------------|-----------|
| 34 | * | MASON | 25 | 5 |
| CONTRACT NO. 72H24 | | | | |
| ILLINOIS FED. AID PROJECT | | | | |

SCALE: SHEET 1 OF 3 SHEETS STA. TO STA.

*1R5-7, 2R5-3, 2B-1(BDR,BRR)

MOEEL: Default FILE: M:\MS\proj\shdls-cw-benlfrs.com\FHW07\Documents\DOT Office\Bdrfrs\B\Projects\0672\2\CAD\Bdrfrs\0672\2\sh-schedule.dgn

REV. - MS

FAP 34 (IL 97) ENTRANCE SCHEDULE

| LOCATION | NAME / TYPE | EXISTING MATERIAL TYPE | (3) FRONT WIDTH (FT) | (2) MIDDLE WIDTH (FT) | (1) REAR WIDTH (FT) | (A) DIST FROM EOP (FT) | (B) DIST FROM APRON (FT) | HMA THICKNESS (IN) | 35800100 | 40800050 | 40200800 | 40600990 | 40600982 | 40800029 |
|------------------|-------------|------------------------|----------------------|-----------------------|---------------------|------------------------|--------------------------|--------------------|-----------------------------|----------------------------|---------------------------------|------------------------|----------------------------|---------------------------|
| | | | | | | | | | PREPARATION OF BASE (SQ YD) | INCIDENTAL SURFACING (TON) | AGGREGATE SURFACE, TYPE B (TON) | TEMPORARY RAMP (SQ YD) | HMA SURF REM - B J (SQ YD) | BIT MAT TACK COAT (POUND) |
| LT STA 510+34.00 | CE | AGG | 54.0 | 34.0 | 24 | 10 | 5 | 8 | 48.9 | 21.9 | 1.8 | - | - | - |
| LT STA 513+73.00 | CE | AGG | 48.0 | 28.0 | 18 | 10 | 5 | 8 | 42.2 | 18.9 | 1.5 | - | - | - |
| LT STA 516+23.00 | PE | HMA | 32.0 | 16.0 | - | 8 | - | 3.5 | - | 4.2 | - | - | 21.3 | 9.6 |
| RT STA 517+39.00 | SR | HMA | 75.0 | 24.0 | - | 35 | - | 2.25 | - | 24.3 | - | 13.3 | 192.5 | 86.6 |
| LT STA 517+43.00 | SR | HMA | 80.0 | 25.0 | - | 35 | - | 2.25 | - | 25.7 | - | 13.9 | 204.2 | 91.9 |
| LT STA 540+27.00 | CE | AGG | 66.0 | 46.0 | 36 | 10 | 5 | 8 | 62.2 | 27.9 | 2.6 | - | - | 28.0 |
| LT STA 541+16.00 | CE | AGG | 66.0 | 46.0 | 36 | 10 | 5 | 8 | 62.2 | 27.9 | 2.6 | - | - | - |
| RT STA 543+32.00 | MB | HMA | 64.0 | 20.0 | - | 8 | - | 2.25 | - | 4.7 | - | - | 37.3 | 16.8 |
| LT STA 543+38.00 | PE | AGG | 42.0 | 26.0 | 12 | 8 | 7 | 3.5 | 30.2 | 5.9 | 1.7 | - | - | - |
| LT STA 556+00.00 | PE | AGG | 42.0 | 26.0 | 12 | 8 | 7 | 3.5 | 30.2 | 5.9 | 1.7 | - | - | - |
| RT STA 556+62.00 | MB | HMA | 64.0 | 20.0 | - | 8 | - | 2.25 | - | 4.7 | - | - | 37.3 | 16.8 |
| RT STA 569+11.00 | CE | HMA | 54.0 | 34.0 | - | 10 | - | 2.25 | - | 6.2 | - | - | 48.9 | 22.0 |
| LT STA 570+31.00 | SR | HMA | 100.0 | 26.0 | - | 50 | - | 2.25 | - | 44.1 | - | 14.4 | 350.0 | 157.5 |
| RT STA 593+42.00 | CE | AGG | 48.0 | 28.0 | 18 | 10 | 5 | 8 | 42.2 | 18.9 | 1.5 | - | - | - |
| RT STA 594+55.00 | CE | AGG | 54.0 | 34.0 | 24 | 10 | 5 | 8 | 48.9 | 21.9 | 1.8 | - | - | - |
| RT STA 595+04.00 | CE | AGG | 66.0 | 46.0 | 36 | 10 | 5 | 8 | 62.2 | 27.9 | 2.6 | - | - | - |
| LT STA 596+71.00 | SR | HMA | 75.0 | 20.0 | - | 25 | - | 2.25 | - | 16.6 | - | 11.1 | 131.9 | 59.4 |
| RT STA 596+75.00 | SR | HMA | 75.0 | 18.0 | - | 50 | - | 2.25 | - | 32.6 | - | 10.0 | 258.3 | 116.3 |
| RT STA 598+75.00 | PE | AGG | 66.0 | 46.0 | 36 | 8 | 7 | 3.5 | 49.8 | 9.8 | 3.6 | - | - | - |
| RT STA 600+53.00 | SR | HMA | 85.0 | 16.0 | - | 40 | - | 2.25 | - | 28.3 | - | 8.9 | 224.4 | 101.0 |
| RT STA 601+62.00 | PE | AGG | 54.0 | 38.0 | 24 | 8 | 7 | 3.5 | 40.9 | 8.0 | 2.7 | - | - | - |
| RT STA 603+19.00 | CE | AGG | 58.0 | 38.0 | 28 | 10 | 5 | 8 | 53.3 | 23.9 | 2.1 | - | - | - |
| RT STA 604+54.00 | SR | HMA | 85.0 | 25.0 | - | 45 | - | 2.25 | - | 34.7 | - | 13.9 | 275.0 | 123.8 |
| RT STA 608+57.00 | SR | HMA | 110.0 | 25.0 | - | 50 | - | 2.25 | - | 47.3 | - | 13.9 | 375.0 | 168.8 |
| RT STA 610+39.00 | PE | AGG | 48.0 | 32.0 | 18 | 8 | 7 | 3.5 | 35.6 | 7.0 | 2.2 | - | - | 16.0 |
| RT STA 612+44.00 | SR | HMA | 40.0 | 20.0 | - | 40 | - | 2.25 | - | 16.8 | - | 11.1 | 133.3 | 60.0 |
| RT STA 614+16.00 | PE | AGG | 50.0 | 34.0 | 20 | 8 | 7 | 3.5 | 37.3 | 7.3 | 2.4 | - | - | - |
| RT STA 616+44.00 | SR | HMA | 115.0 | 20.0 | - | 45 | - | 2.25 | - | 42.5 | - | 11.1 | 337.5 | 151.9 |
| RT STA 620+44.00 | SR | HMA | 65.0 | 18.0 | - | 30 | - | 2.25 | - | 17.4 | - | 10.0 | 138.3 | 62.3 |
| RT STA 621+54.00 | PE | AGG | 45.0 | 29.0 | 15 | 8 | 7 | 3.5 | 32.9 | 6.4 | 1.9 | - | - | - |
| LT STA 622+05.00 | SR | HMA | 85.0 | 20.0 | - | 40 | - | 2.25 | - | 29.4 | - | 11.1 | 233.3 | 105.0 |
| RT STA 622+14.00 | SR | HMA | 70.0 | 20.0 | - | 30 | - | 2.25 | - | 18.9 | - | 11.1 | 150.0 | 67.5 |
| RT STA 626+06.00 | PE | AGG | 45.0 | 29.0 | 15 | 8 | 7 | 3.5 | 32.9 | 6.4 | 1.9 | - | - | - |
| LT STA 639+80.00 | FE | AGG | 48.0 | 28.0 | 18 | 8 | 7 | 2.25 | 33.8 | 4.3 | 2.0 | - | - | - |
| RT STA 663+20.00 | SR | HMA | 115.0 | 25.0 | - | 50 | - | 2.25 | - | 49.0 | - | 13.9 | 388.9 | 175.0 |
| LT STA 663+56.00 | CE | AGG | 60.0 | 40.0 | 30 | 10 | 5 | 8 | 55.6 | 24.9 | 2.2 | - | - | - |
| LT STA 667+82.00 | FE | AGG | 50.0 | 30.0 | 20 | 8 | 7 | 2.25 | 35.6 | 4.5 | 2.2 | - | - | - |
| TOTALS : | | | | | | | | | 837 | 727 | 41 | 168 | 3,538 | 1,636 |

MODEL - Default
 FILE - Material - Project\Bids\benitey.com\RWIDOT\Documents\DOT Office\Bids\Bids - Projects\0672H24\CADD\Bids\CADD\Sheet\0672H24-FH-Schedule.dgn

| | | |
|-------------------------------|------------|-----------|
| USER NAME = andrew.cisler | DESIGNED - | REVISED - |
| | DRAWN - | REVISED - |
| PLOT SCALE = 100.0007 ' / in. | CHECKED - | REVISED - |
| PLOT DATE = 10/21/2022 | DATE - | REVISED - |

**STATE OF ILLINOIS
DEPARTMENT OF TRANSPORTATION**

SCHEDULE OF QUANTITIES

SCALE: SHEET 2 OF 3 SHEETS STA. TO STA.

| | | | | |
|---------------------------|-----------|--------------|-----------------|-------------|
| F.A.P RTE. 34 | SECTION + | COUNTY MASON | TOTAL SHEETS 25 | SHEET NO. 6 |
| CONTRACT NO. 72H24 | | | | |
| ILLINOIS FED. AID PROJECT | | | | |

| | | | | 63000001 | 63100085 | 63100167 | 63200310 | 72501000 | 78200005 |
|-----------------|----|-------------|----|--------------------------------------|-------------------------------------|----------------------------------------------------------|-------------------|-----------------------------------|---------------------------------|
| <u>LOCATION</u> | | <u>SIDE</u> | | STEEL PLATE BEAM GUARDRAIL TYPE A | TRAFFIC BARRIER TERMINAL, TYPE 6 | TRAFFIC BARRIER TERMINAL, TYPE 1 (SPECIAL) TANGENT | GUARDRAIL REMOVAL | TERMINAL MARKER DIRECT APPLIED | GUARDRAIL REFLECTORS, TYPE A |
| FAP 34 (IL 97) | | | | FT | EACH | EACH | FT | EACH | EACH |
| 685+45.00 | TO | 688+70.00 | LT | 262.5 | 1 | 1 | 325.0 | 1 | 4 |
| 686+45.00 | TO | 688+70.00 | RT | 162.5 | 1 | 1 | 225.0 | 1 | 4 |
| 691+28.00 | TO | 693+65.50 | LT | 175.0 | 1 | 1 | 237.5 | 1 | 4 |
| 691+28.00 | TO | 692+90.50 | RT | 100.0 | 1 | 1 | 162.5 | 1 | 4 |
| 724+43.00 | TO | 726+80.50 | LT | 175.0 | 1 | 1 | 237.5 | 1 | 4 |
| 724+55.50 | TO | 726+80.50 | RT | 162.5 | 1 | 1 | 225.0 | 1 | 4 |
| TOTAL | | | | 1038 | 6 | 6 | 1413 | 6 | 24 |

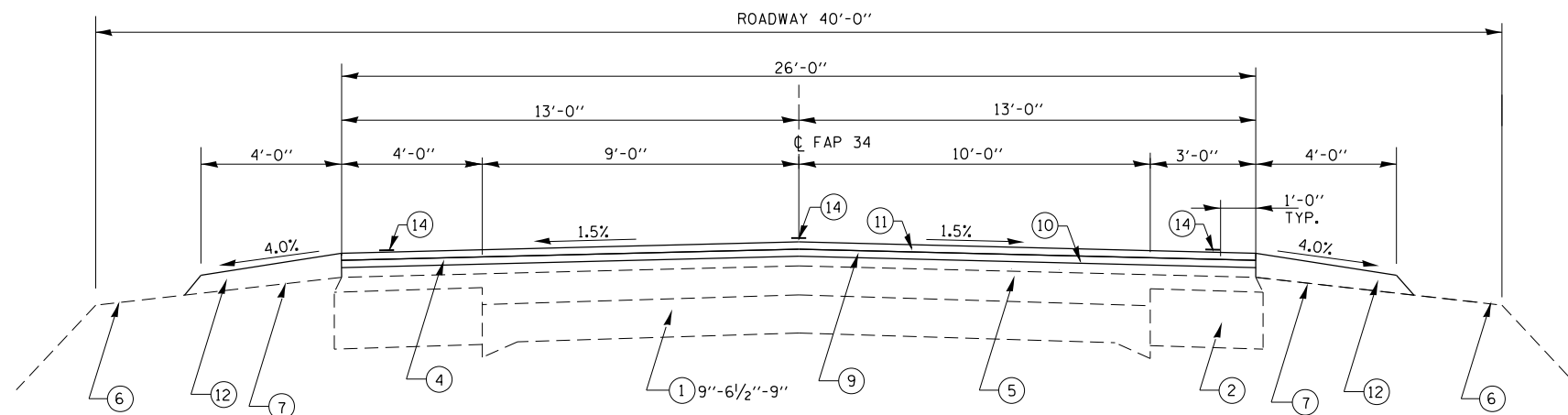
| PAVEMENT MARKING SCHEDULE | | | | | 78001120 | 70300100 | 70300150 | |
|---------------------------|----|---------------|---------------------------|----------------|--------------------|--------------------|----------------------|-----------------------------|
| <u>LOCATION</u> | | | <u>PAINT DESCRIPTION</u> | <u>SPACING</u> | <u>PAINT PM 5"</u> | | <u>SHORT TERM PM</u> | <u>SHORT TERM PM REM</u> |
| <u>STATION TO STATION</u> | | | | | <u>WHITE (FT)</u> | <u>YELLOW (FT)</u> | <u>3 APPS (FOOT)</u> | <u>W.Z. REMOVAL (SQ FT)</u> |
| F.A.P. 34 IL 97 | | | | | | | | |
| STA 500+30.83 | TO | STA 504+80.00 | SOLID (LT) SKIP-DASH (RT) | 10' @ 40' | 898 | 561 | 135 | 15 |
| STA 504+80.00 | TO | STA 511+53.00 | SOLID (RT) SKIP-DASH (LT) | 10' @ 40' | 1,346 | 841 | 202 | 22 |
| STA 511+53.00 | TO | STA 512+91.00 | SKIP-DASH | 10' @ 40' | 276 | 35 | 41 | 5 |
| STA 512+91.00 | TO | STA 520+21.00 | SOLID (LT) SKIP-DASH (RT) | 10' @ 40' | 1,460 | 913 | 219 | 24 |
| STA 520+21.00 | TO | STA 560+89.00 | SKIP-DASH | 10' @ 40' | 8,136 | 1,017 | 1,220 | 136 |
| STA 560+89.00 | TO | STA 570+26.00 | SOLID (RT) SKIP-DASH (LT) | 10' @ 40' | 1,874 | 1,171 | 281 | 31 |
| STA 570+26.00 | TO | STA 579+04.00 | SOLID (LT) SKIP-DASH (RT) | 10' @ 40' | 1,756 | 1,098 | 263 | 29 |
| STA 579+04.00 | TO | STA 615+04.00 | SKIP-DASH | 10' @ 40' | 7,200 | 900 | 1,080 | 120 |
| STA 615+04.00 | TO | STA 625+02.00 | SOLID (RT) SKIP-DASH (LT) | 10' @ 40' | 1,996 | 1,248 | 299 | 33 |
| STA 625+02.00 | TO | STA 642+52.00 | SOLID (RT) SOLID (LT) | 10' @ 40' | 3,500 | 3,500 | 525 | 58 |
| STA 642+52.00 | TO | STA 653+60.00 | SOLID (LT) SKIP-DASH (RT) | 10' @ 40' | 2,216 | 1,385 | 332 | 37 |
| STA 653+60.00 | TO | STA 726+86.91 | SOLID (LT) SKIP-DASH (RT) | 10' @ 40' | 14,654 | 9,159 | 2,198 | 244 |
| SUB-TOTALS: | | | | | 45,312 | 21,827 | 6,797 | 755 |
| GRAND-TOTALS: | | | | | 67,139 | 6,797 | 6,797 | 755 |

| RAISED REFLECTIVE PAVEMENT MARKER | | | | 78100100 | 78300200 |
|-------------------------------------------------|----|---------------|----------------|--------------------|----------------|
| <u>LOCATION</u> | | | <u>SPACING</u> | <u>APPLICATION</u> | <u>REMOVAL</u> |
| STA 500+30.83 | TO | STA 688+81.96 | 1 @ 80' | 236 | 236 |
| BRIDGE OMISSION: STA 688+81.96 TO STA 691+42.53 | | | | | |
| STA 691+42.53 | TO | STA 726+86.91 | 1 @ 80' | 44 | 44 |
| TOTALS: | | | | 280 | 280 |

| <u>LOCATION</u> | | | 44004250 | 44000500 | 48300400 | 54262712 | 60100945 | 60607400 | 61000335 | X6050700 |
|-------------------------------------------------|----|---------------|-------------------------|-------------------------------------|-------------------------|--------------------------------|-------------------|----------------------------------------------|---------------------|---------------------|
| | | | PAV SHOULDER REMOVAL | COMB. CURB AND GUTTER REMOVAL | PCC. SHOULDERS 9" | METAL FLARED END SECTION | PIPE DRAIN 12" | COMB. CONCRETE CURB & GUTTER B-9.24 | TYPE G INLET BOX | REMOVE INLET BOX |
| <u>(FOOT)</u> | | | <u>(SQ YD)</u> | <u>(FOOT)</u> | <u>(SQ YD)</u> | <u>(EACH)</u> | <u>(FOOT)</u> | <u>(FOOT)</u> | <u>(EACH)</u> | <u>(EACH)</u> |
| STA 688+51.96 | TO | STA 688+81.96 | 30.00 | 3.5 | 20.0 | 3.5 | 1.0 | 12.0 | 30.0 | 1.0 |
| STA 688+51.96 | TO | STA 688+81.96 | 30.00 | 3.5 | 20.0 | 3.5 | 1.0 | 12.0 | 30.0 | 1.0 |
| BRIDGE OMISSION: STA 688+81.96 TO STA 691+42.53 | | | | | | | | | | |
| STA 691+42.53 | TO | STA 691+72.53 | 30.00 | 3.5 | 20.0 | 3.5 | 1.0 | 12.0 | 30.0 | 1.0 |
| STA 691+42.53 | TO | STA 691+72.53 | 30.00 | 3.5 | 20.0 | 3.5 | 1.0 | 12.0 | 30.0 | 1.0 |
| TOTALS: | | | 14 | 80 | 14 | 4 | 48 | 120 | 4 | 4 |

MODEL: Default
 FILE: MainE: p:\polder-cw-bentley.com\PWDOT\Documents\DOT Offices\District 6\Projects\0672H24\000data\CAD\sheet\0672H24-rh-schedule.dgn

| | | | | | | | | | | | | |
|------------------------------|------------|-----------|-----------------------------------------------------------|-------------------------------|---------|------|--------|----------------|-----------|--------------------|-----------------|-------------|
| USER NAME = andrew.cisler | DESIGNED - | REVISED - | STATE OF ILLINOIS DEPARTMENT OF TRANSPORTATION | SCHEDULE OF QUANTITIES | | | | F.A.P. RTE. 34 | SECTION * | COUNTY MASON | TOTAL SHEETS 25 | SHEET NO. 7 |
| PLOT SCALE = 100.0040' / in. | CHECKED - | REVISED - | | SCALE: | SHEET 3 | OF 3 | SHEETS | STA. | TO STA. | CONTRACT NO. 72H24 | | |
| PLOT DATE = 10/21/2022 | DATE - | REVISED - | | ILLINOIS FED. AID PROJECT | | | | | | | | |
| *1R5-7, 2R5-3, 2B-1(BDR,BRR) | | | | | | | | | | | | |



TYPICAL SECTION #1

STA. 500+30.83 TO STA. 631+01.00
 STA. 649+38.00 TO STA. 685+15.00
 STA. 695+15.00 TO STA. 703+03.00
 STA. 713+00.00 TO STA. 723+00.00

LEGEND

- ① EX PCC PAVEMENT
- ② EX HMA BASE COURSE WIDENING (9")
- ③ EX HMA BASE COURSE (VARIABLE THICKNESS)
- ④ EX LEVELING BINDER (MACHINE METHOD)
- ⑤ EX HMA SURFACE COURSE
- ⑥ EX EARTH SHOULDERS
- ⑦ EX AGGREGATE SHOULDERS
- ⑧ EX HMA SHOULDERS 9"
- ⑨ PR HMA SURFACE REMOVAL (1 1/2")
- ⑩ PR HMA BINDER COURSE IL-9.5 FG, N50 (1 1/4")
- ⑪ PR HMA ASPHALT SURFACE COURSE, MIX "C", N50 (1 1/2")
- ⑫ PR AGGREGATE WEDGE SHOULDERS, TYPE B
- ⑬ PR HMA SHOULDERS
- ⑭ PR PAINT PAVEMENT MARKING LINE 5"

MODEL: Default
 FILE: M:\MSD\p\11482-cw-behntley.com\PHWDOT\Documents\DOT Offices\Bentley\6\Projects\0672\2\2\CAD\Drawings\0672\24\ts-typical.dgn

| | | |
|------------------------------|------------|-----------|
| USER NAME = andrew.cisler | DESIGNED - | REVISED - |
| | DRAWN - | REVISED - |
| PLOT SCALE = 100,0001' / in. | CHECKED - | REVISED - |
| PLOT DATE = 10/21/2022 | DATE - | REVISED - |

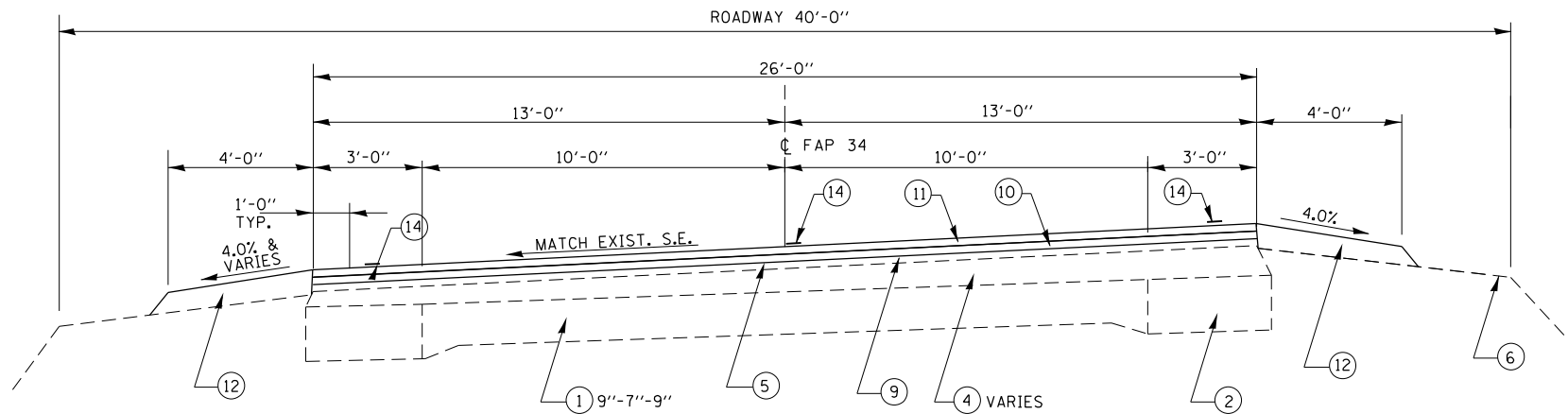
**STATE OF ILLINOIS
 DEPARTMENT OF TRANSPORTATION**

**TYPICAL SECTIONS
 FAP 34 (IL 97)**

SCALE: SHEET 1 OF 2 SHEETS STA. TO STA.

| F.A.P. RTE. | SECTION | COUNTY | TOTAL SHEETS | SHEET NO. |
|-------------|---------|---------------------------|--------------------|-----------|
| 34 | * | MASON | 25 | 8 |
| | | | CONTRACT NO. 72H24 | |
| | | ILLINOIS FED. AID PROJECT | | |

+1RS-7, 2RS-3, 2B-1(BDR,BRR)

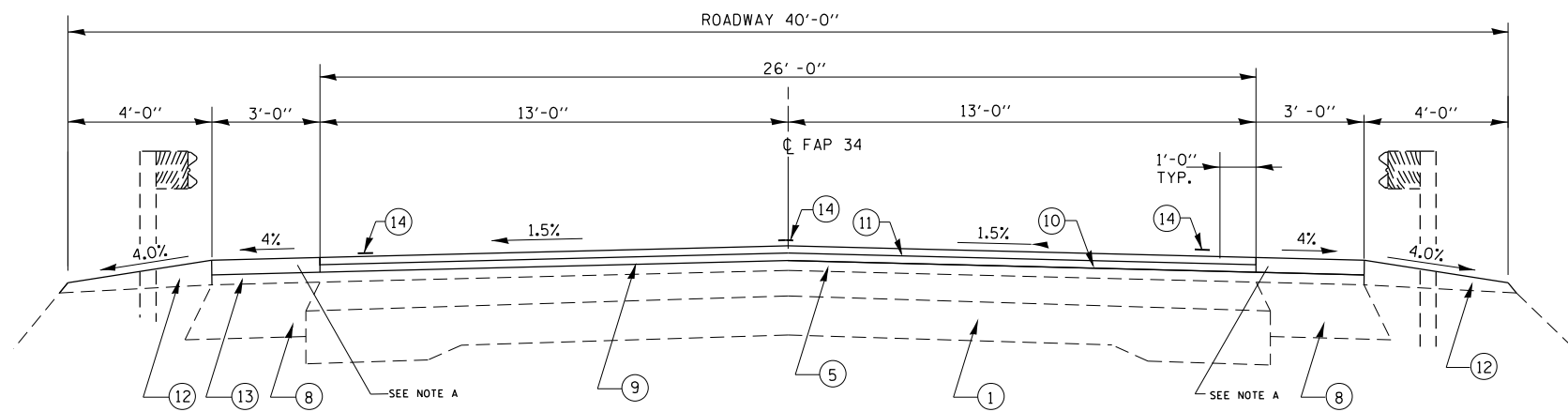


TYPICAL SECTION #2

STA. 631+01 TO STA. 649+38
 STA. 703+03 TO STA. 712+99

LEGEND

- ① EX PCC PAVEMENT
- ② EX HMA BASE COURSE WIDENING (9'')
- ③ EX HMA BASE COURSE (VARIABLE THICKNESS)
- ④ EX LEVELING BINDER (MACHINE METHOD)
- ⑤ EX HMA SURFACE COURSE
- ⑥ EX EARTH SHOULDERS
- ⑦ EX AGGREGATE SHOULDERS
- ⑧ EX HMA SHOULDERS 9''
- ⑨ PR HMA SURFACE REMOVAL (1 1/2'')
- ⑩ PR HMA BINDER COURSE IL-9.5 FG, N50 (1 1/4'')
- ⑪ PR HMA ASPHALT SURFACE COURSE, MIX "C", N50 (1 1/2'')
- ⑫ PR AGGREGATE WEDGE SHOULDERS, TYPE B
- ⑬ PR HMA SHOULDERS
- ⑭ PR PAINT PAVEMENT MARKING LINE 5''



TYPICAL SECTION #3

STA. 685+15 TO STA. 688+81
 BRIDGE OMISSION STA. 688+81 TO STA. 691+42
 STA. 691+42 TO STA. 695+15
 STA. 723+00 TO STA. 726+86.91

NOTE A

COMB. CURB & GUTTER REM / TYPE B-9.24
 STA. 688+51.96 TO STA. 688+81.96 & STA. 691+42.53 TO STA. 691+72.53
 PAVED SHOULDER REM.
 STA. 688+51.96 TO STA. 688+81.96 & STA. 691+42.53 TO STA. 691+72.53
 PCC SHOULDERS, 9''
 STA. 688+51.96 TO STA. 688+81.96 & STA. 691+42.53 TO STA. 691+72.53

MODEL: Default
 FILE: I:\dms\p\10482\p\10482.dwg
 PROJECT: I:\dms\p\10482\p\10482.dwg
 PLOT DATE: 10/21/2022

| | | |
|------------------------------|------------|-----------|
| USER NAME = andrew.cisler | DESIGNED - | REVISED - |
| PLOT SCALE = 100,0029' / in. | DRAWN - | REVISED - |
| PLOT DATE = 10/21/2022 | CHECKED - | REVISED - |
| | DATE - | REVISED - |

**STATE OF ILLINOIS
 DEPARTMENT OF TRANSPORTATION**

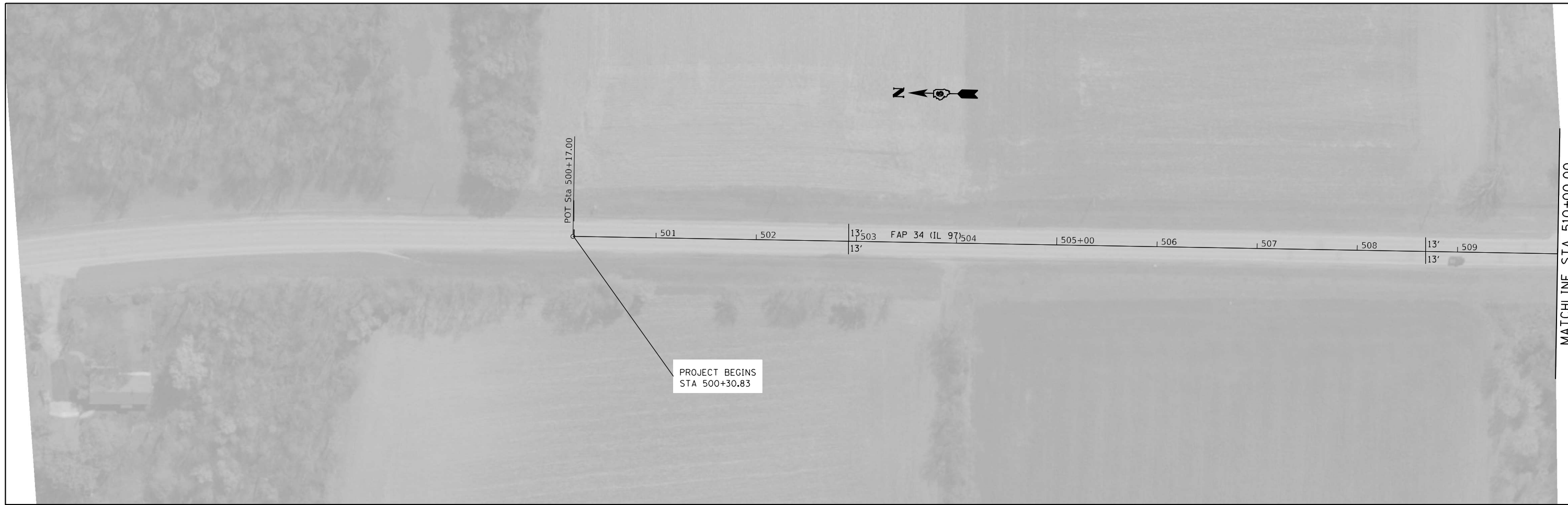
**TYPICAL SECTIONS
 FAP 34 (IL 97)**

SCALE: SHEET 2 OF 2 SHEETS STA. TO STA.

| F.A.P. RTE. | SECTION | COUNTY | TOTAL SHEETS | SHEET NO. |
|---------------------------|---------|--------|--------------------|-----------|
| 34 | * | MASON | 25 | 9 |
| ILLINOIS FED. AID PROJECT | | | CONTRACT NO. 72H24 | |

+1RS-7, 2RS-3, 2B-1(BDR,BRR)

MODEL: Default
 FILE NAME: \\wulab\pwr_bentley.com\PIV\DOT\Documents\DOT_Offices\brctt @\Projects\067242\CA\00\Drawings\067242\plan-sh12.dgn



| | | |
|------------------------------|------------|-----------|
| USER NAME = Nicholas.Rowden | DESIGNED - | REVISED - |
| DRAWN - | REVISED - | |
| PLOT SCALE = 100.1979' / in. | CHECKED - | REVISED - |
| PLOT DATE = 10/19/2022 | DATE - | REVISED - |

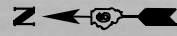
**STATE OF ILLINOIS
 DEPARTMENT OF TRANSPORTATION**

**PLAN SHEET
 FAP 34 (IL 97)**

SCALE: 1" = 50' SHEET 1 OF 9 SHEETS STA. 500+30.83 TO STA. 525+00.00

| | | | | |
|--------------------|-----------|--------------|---------------------------|--------------|
| F.A.P. RTE. 34 | SECTION * | COUNTY MASON | TOTAL SHEETS 25 | SHEET NO. 10 |
| CONTRACT NO. 72H24 | | | ILLINOIS FED. AID PROJECT | |

*1RS-7, 2RS-3, 2B-1(BDR,BRR)

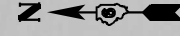


MATCHLINE STA 525+00.00

525+00 | 526 | 527 | 528 | 529 | 13' | 530+00 | 531 FAP 34 (IL 97) 532 | 533 | 534 | 535+00 | 536 | 13' | 537 | 538 | 539

MATCHLINE STA 540+00.00

MATCHLINE STA 540+00.00



540+00 | 541 | 13' | 542 | 543 | 544 | 545+00 | 546 | 547 FAP 34 (IL 97) 548 | 549 | 550+00 | 551 | 13' | 552 | 553 | 554

MATCHLINE STA 555+00.00

+27 CE
AGG

+16 CE
AGG

+38 PE
AGG

+32 MB
HMA

MODEL Default
FILE Name: p:\work\csw_bentley.com\PIV\DOT\Documents\DOT Offices\District 6\Projects\DE72H24\CAD\Drawings\DE72H24-11-sh12.dgn

| | | |
|------------------------------|------------|-----------|
| USER NAME = Nicholas,Rowden | DESIGNED - | REVISED - |
| | DRAWN - | REVISED - |
| PLOT SCALE = 100.0395' / in. | CHECKED - | REVISED - |
| PLOT DATE = 10/19/2022 | DATE - | REVISED - |

**STATE OF ILLINOIS
DEPARTMENT OF TRANSPORTATION**

**PLAN SHEET
FAP 34 (IL 97)**

SCALE: 1" = 50' SHEET 2 OF 9 SHEETS STA. 525+00.00 TO STA. 555+00.00

| F.A.P. RTE. | SECTION | COUNTY | TOTAL SHEETS | SHEET NO. |
|--------------------|---------|--------|--------------|-----------|
| 34 | * | MASON | 25 | 11 |
| CONTRACT NO. 72H24 | | | | |

= 1RS-7, 2RS-3, 2B-1(BDR,BRR)

Model: Default
 File Name: p:\work\awbentley.com\p\1\DOT\Documents\DOT Offices\District 6\Projects\2022\72H24\plan-sh-21.dgn

MATCHLINE STA 555+00.00



MATCHLINE STA 570+00.00



| | | |
|------------------------------|------------|-----------|
| USER NAME = Nicholas,Rowden | DESIGNED - | REVISED - |
| | DRAWN - | REVISED - |
| PLOT SCALE = 100.0005' / in. | CHECKED - | REVISED - |
| PLOT DATE = 10/19/2022 | DATE - | REVISED - |

**STATE OF ILLINOIS
 DEPARTMENT OF TRANSPORTATION**

**PLAN SHEET
 FAP 34 (IL 97)**

SCALE: 1" = 50' SHEET 3 OF 9 SHEETS STA. 555+00.00 TO STA. 585+00.00

| F.A.P. RTE. | SECTION | COUNTY | TOTAL SHEETS | SHEET NO. |
|--------------------|---------|--------|---------------------------|-----------|
| 34 | * | MASON | 25 | 12 |
| CONTRACT NO. 72H24 | | | ILLINOIS FED. AID PROJECT | |

*1RS-7, 2RS-3, 2B-1(BDR,BRR)

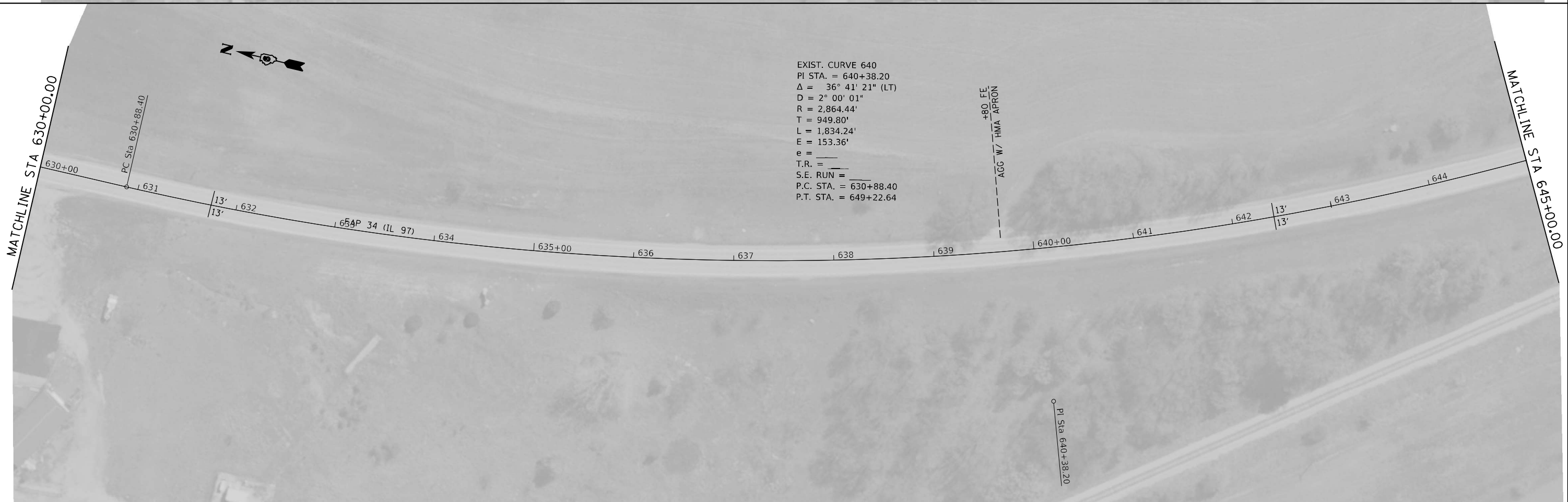
MODEL: Default
 FILE: \\mille.owa\illdot\work\benr\com\PI\DOT\Documents\DOT_Offices\Barrick_E\Projects\0672\23\CD\Draws\CAD\Sheet\067212-11-19-21.dgn

MATCHLINE STA 615+00.00



MATCHLINE STA 630+00.00

MATCHLINE STA 630+00.00



MATCHLINE STA 645+00.00

EXIST. CURVE 640
 PI STA. = 640+38.20
 $\Delta = 36^\circ 41' 21''$ (LT)
 D = 2° 00' 01"
 R = 2,864.44'
 T = 949.80'
 L = 1,834.24'
 E = 153.36'
 e = _____
 T.R. = _____
 S.E. RUN = _____
 P.C. STA. = 630+88.40
 P.T. STA. = 649+22.64

+80 FE
 AGG W/ HMA APRON

PI Sta 640+38.20

| | | |
|------------------------------|------------|-----------|
| USER NAME = Nicholas.Rowden | DESIGNED - | REVISED - |
| DRAWN - | REVISED - | |
| PLOT SCALE = 100.0440' / in. | CHECKED - | REVISED - |
| PLOT DATE = 10/19/2022 | DATE - | REVISED - |

**STATE OF ILLINOIS
 DEPARTMENT OF TRANSPORTATION**

**PLAN SHEET
 FAP 34 (IL 97)**

SCALE: 1" = 50' SHEET 5 OF 9 SHEETS STA. 615+00.00 TO STA. 645+00.00

| F.A.P. RTE. | SECTION | COUNTY | TOTAL SHEETS | SHEET NO. |
|-------------|---------|--------|--------------------|-----------|
| 34 | * | MASON | 25 | 14 |
| | | | CONTRACT NO. 72H24 | |

ILLINOIS FED. AID PROJECT
 +1RS-7, 2RS-3, 2B-1(BDR,BRR)



MODEL: D:\draft\...
 FILE NAME: ...
 PROJECT: ...

| | | |
|-----------------------------|------------|-----------|
| USER NAME = Nicholas Rowden | DESIGNED - | REVISED - |
| DRAWN - | REVISED - | |
| PLOT SCALE = 99.9994' / in. | CHECKED - | REVISED - |
| PLOT DATE = 10/19/2022 | DATE - | REVISED - |

STATE OF ILLINOIS
DEPARTMENT OF TRANSPORTATION

| PLAN SHEET | |
|-----------------|---------------------|
| FAP 34 (IL 97) | |
| SCALE: 1" = 50' | SHEET 6 OF 9 SHEETS |
| STA. 645+00.00 | STA. 675+00.00 |

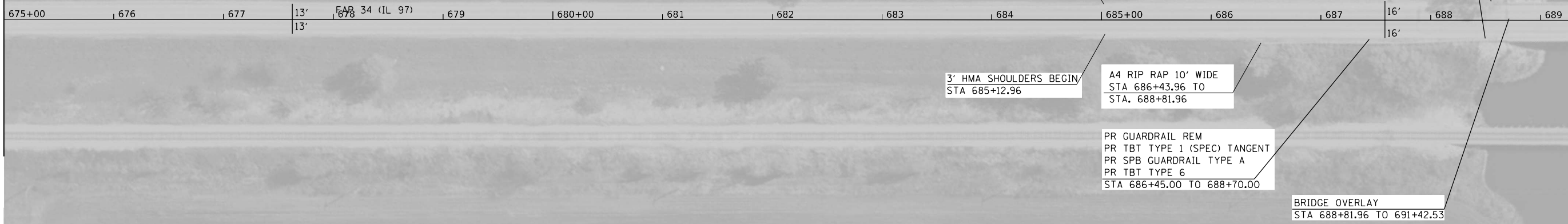
| F.A.P. RTE. | SECTION | COUNTY | TOTAL SHEETS | SHEET NO. |
|---------------------------|---------|--------|--------------------|-----------|
| 34 | * | MASON | 25 | 15 |
| ILLINOIS FED. AID PROJECT | | | CONTRACT NO. 72H24 | |

+1RS-7, 2RS-3, 2B-1(BDR,BRR)

MODEL: D:\info\... FILE: M:\a\... \PROJECTS\SDG672H2\CAD\DATA\CAD\FILES\SDG672H2\PLAN-SH21.dgn

MATCHLINE STA 675+00.00

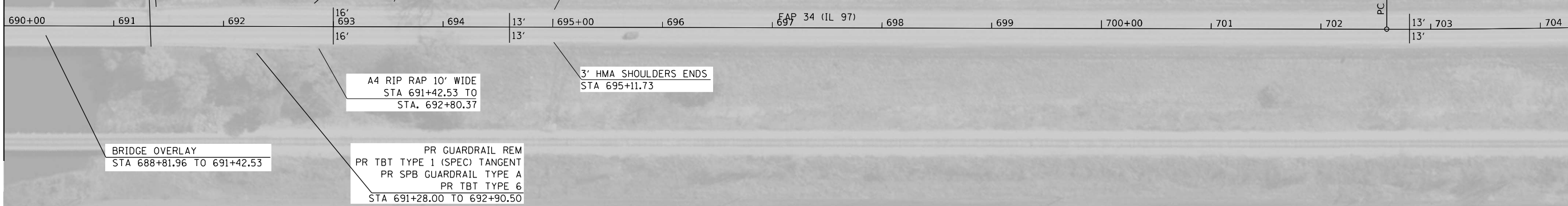
MATCHLINE STA 690+00.00



PR PAVED SHLDR REM (7 SQ YD)
PR PCC SHLDS (7 SQ YD)
PR COMB C & G REM (40')
PR COMB CONC C & G B-9.24 (60')
PR REMOVE INLET BOX (2 EACH)
PR TYPE G INLET BOX (2 EACH)
PIPE DRAIN 12" (24')
METAL FL ES (2 EACH)
STA 688+51.96 TO 688+81.96

MATCHLINE STA 690+00.00

MATCHLINE STA 705+00.00



PR PAVED SHLDR REM (7 SQ YD)
PR PCC SHLDS (7 SQ YD)
PR COMB C & G REM (40')
PR COMB CONC C & G B-9.24 (60')
PR REMOVE INLET BOX (2 EACH)
PR TYPE G INLET BOX (2 EACH)
PIPE DRAIN 12" (24')
METAL FL ES (2 EACH)
STA 691+42.53 TO 691+72.53

PR GUARDRAIL REM
PR TBT TYPE 1 (SPEC) TANGENT
PR SPB GUARDRAIL TYPE A
PR TBT TYPE 6
STA 691+28.00 TO 693+65.50

A4 RIP RAP 10' WIDE
STA 691+42.53 TO
STA. 693+55.20

3' HMA SHOULDERS ENDS
STA 695+11.73

BRIDGE OVERLAY
STA 688+81.96 TO 691+42.53

PR GUARDRAIL REM
PR TBT TYPE 1 (SPEC) TANGENT
PR SPB GUARDRAIL TYPE A
PR TBT TYPE 6
STA 691+28.00 TO 692+90.50

| | | |
|------------------------------|------------|-----------|
| USER NAME = Nicholas,Rowden | DESIGNED - | REVISED - |
| | DRAWN - | REVISED - |
| PLOT SCALE = 100.0193' / in. | CHECKED - | REVISED - |
| PLOT DATE = 10/19/2022 | DATE - | REVISED - |

**STATE OF ILLINOIS
DEPARTMENT OF TRANSPORTATION**

**PLAN SHEET
FAP 34 (IL 97)**

SCALE: 1" = 50' SHEET 7 OF 9 SHEETS STA. 675+00.00 TO STA. 705+00.00

| F.A.P. RTE. | SECTION | COUNTY | TOTAL SHEETS | SHEET NO. |
|--------------------|---------|--------|---------------------------|-----------|
| 34 | * | MASON | 25 | 16 |
| CONTRACT NO. 72H24 | | | ILLINOIS FED. AID PROJECT | |

*1RS-7, 2RS-3, 2B-1(BDR,BRR)

EXIST. CURVE 707
 PI STA. = 707+91.04
 $\Delta = 8^{\circ} 02' 47''$ (LT)
 $D = 0^{\circ} 45' 32''$
 $R = 7,550.87'$
 $T = 531.08'$
 $L = 1,060.41'$
 $E = 18.65'$
 $e =$
 $T.R. =$
 $S.E. RUN =$
 $P.C. STA. = 702+59.96$
 $P.T. STA. = 713+20.37$

MATCHLINE STA 705+00.00

MATCHLINE STA 720+00.00

705+00 706 707 708 709 710+00 711 712 713 714 715+00 716 717 FAP 34 (IL 97) 718 13' 719 13'

PI Sta 707+91.04

PT Sta 713+20.37

MATCHLINE STA 720+00.00

POT Sta 734+03.31

720+00 721 FAP 34 (IL 97) 722 13' 723 13' 724 725+00 726 35' 727 728 729 730+00 731 732 733 734

3' HMA SHOULDERS BEGIN
STA 723+00.00

PR GUARDRAIL REM
 PR TBT TYPE 1 (SPEC) TANGENT
 PR SPB GUARDRAIL TYPE A
 PR TBT TYPE 6
 STA 724+43.00 TO 726+80.50

INSTALL 15 FT. TYPE B CON.
 CURB BOTH SIDES
 TO MATCH THE TRAFFIC BARRIER
 TERMINAL,
 TYPE 6 HIGHWAY STANDARD
 STA.726+71.91 TO STA.726+86.91

3' HMA SHOULDERS BEGIN
STA 723+10.25

PR GUARDRAIL REM
 PR TBT TYPE 1 (SPEC) TANGENT
 PR SPB GUARDRAIL TYPE A
 PR TBT TYPE 6
 STA 724+55.50 TO 726+80.50

PROJECT ENDS
STA 726+86.91

MODEL: Default
 FILE: M:\11512-1\11512-1.dgn

| | | |
|------------------------------|------------|-----------|
| USER NAME = Nicholas.Rowden | DESIGNED - | REVISED - |
| | DRAWN - | REVISED - |
| PLOT SCALE = 100,0247' / in. | CHECKED - | REVISED - |
| PLOT DATE = 10/19/2022 | DATE - | REVISED - |

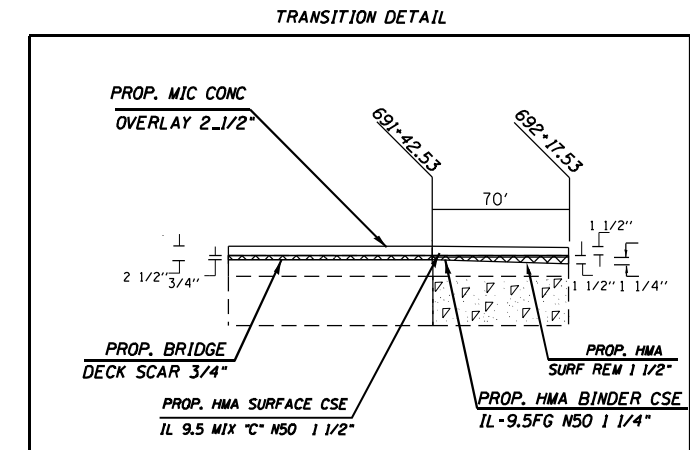
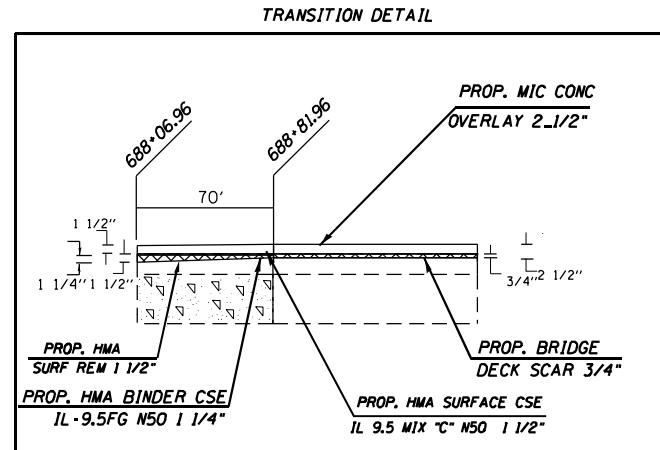
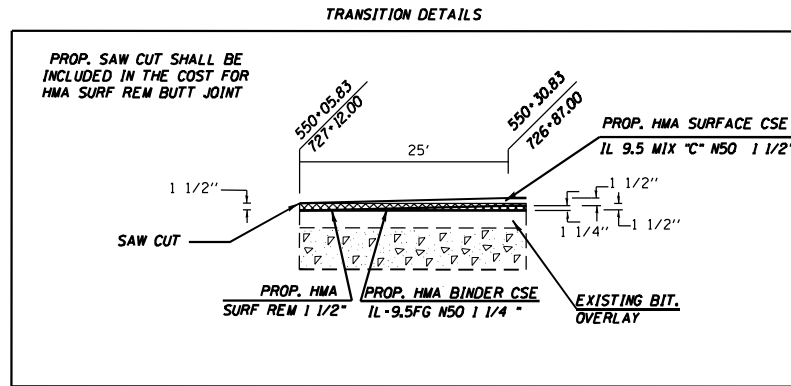
**STATE OF ILLINOIS
 DEPARTMENT OF TRANSPORTATION**

**PLAN SHEET
 FAP 34 (IL 97)**

SCALE: 1" = 50' SHEET 8 OF 9 SHEETS STA. 705+00.00 TO STA. 726+86.91

| F.A.P. RTE. | SECTION | COUNTY | TOTAL SHEETS | SHEET NO. |
|---------------------------|---------|--------|--------------------|-----------|
| 34 | * | MASON | 25 | 17 |
| ILLINOIS FED. AID PROJECT | | | CONTRACT NO. 72H24 | |

+1RS-7, 2RS-3, 2B-1(BDR,BRR)



MODEL: Default
 FILE: \\msdls-zw-bentley.com:PWIDOT\Documents\DOT Offices\Burling\BProjects\DEZ\H24\CADD\Basis\CAD\Drawings\DEZ\H24-pln-sht1.dgn

| | | |
|------------------------------|------------|-----------|
| USER NAME = Nicholas.Rowden | DESIGNED - | REVISED - |
| PLOT SCALE = 100.0353' / in. | DRAWN - | REVISED - |
| PLOT DATE = 10/19/2022 | CHECKED - | REVISED - |
| | DATE - | REVISED - |

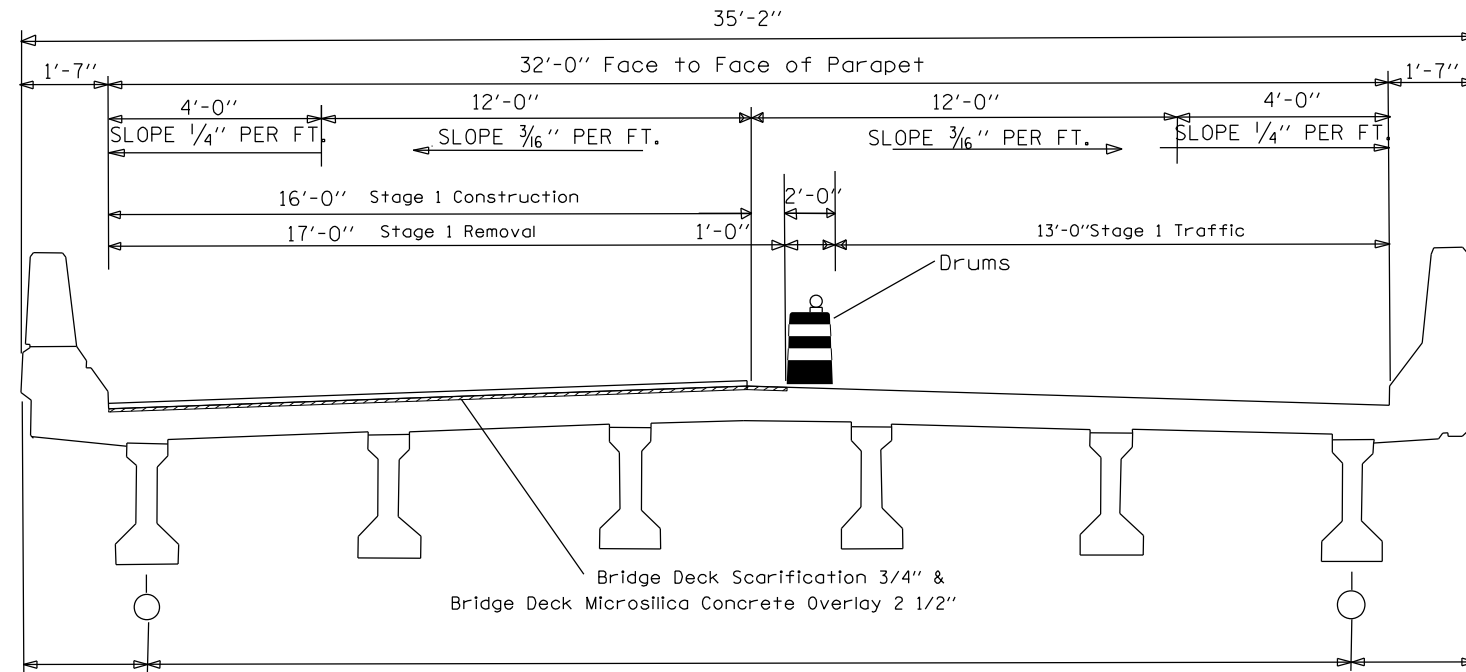
**STATE OF ILLINOIS
DEPARTMENT OF TRANSPORTATION**

**PLAN SHEET
FAP 34 (IL 97)**

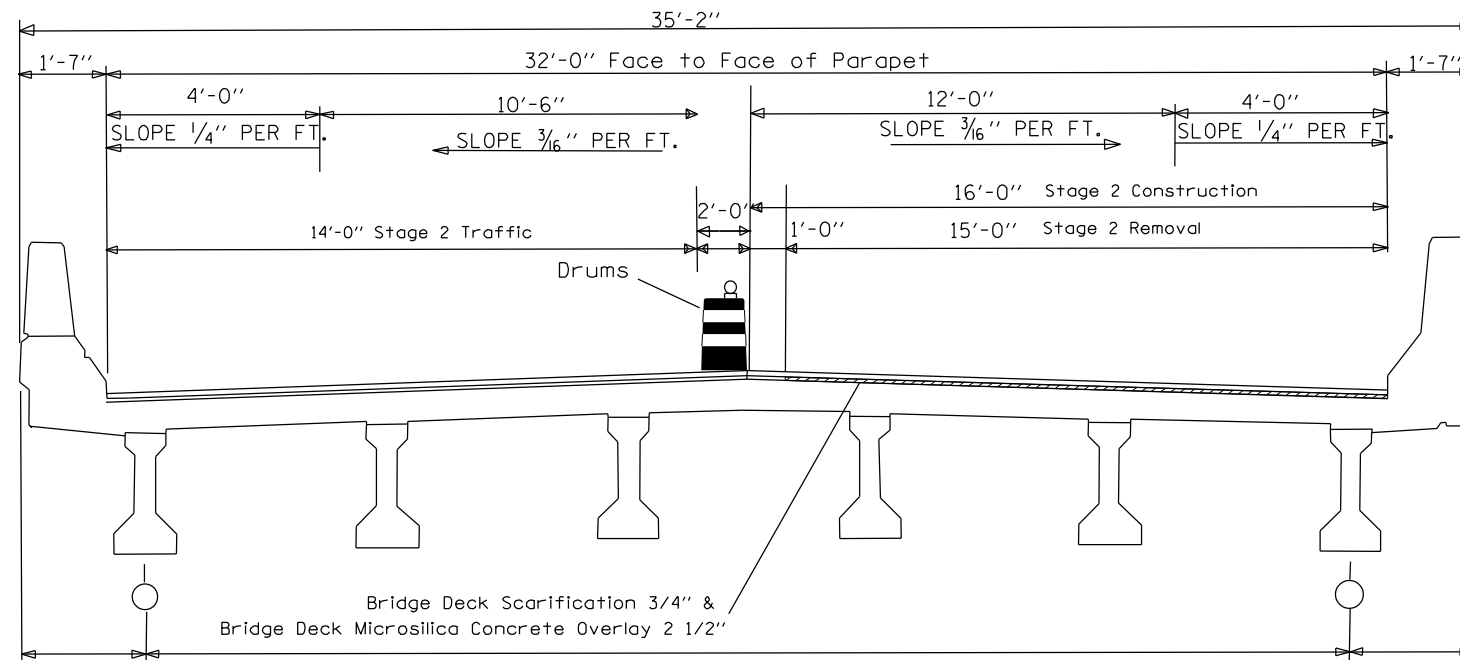
SCALE: 1" = 50' SHEET 9 OF 9 SHEETS STA. TO STA.

| F.A.P. RTE. | SECTION | COUNTY | TOTAL SHEETS | SHEET NO. |
|---------------------------|---------|--------|--------------|-----------|
| 34 | | MASON | 25 | 18 |
| CONTRACT NO. 72H24 | | | | |
| ILLINOIS FED. AID PROJECT | | | | |

+1RS-7, 2RS-3, 2B-1(BDR,BRR)

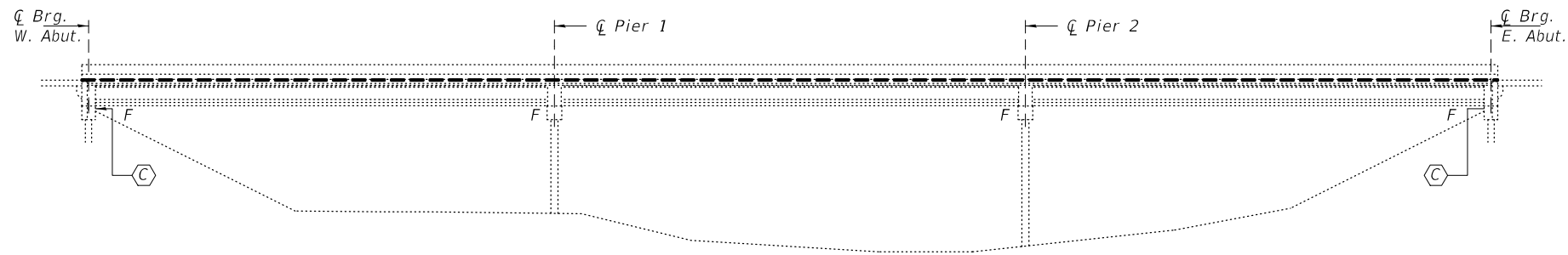


STA. 688+81.96 TO STA. 691+42.53



STA. 688+81.96 TO STA. 691+42.53

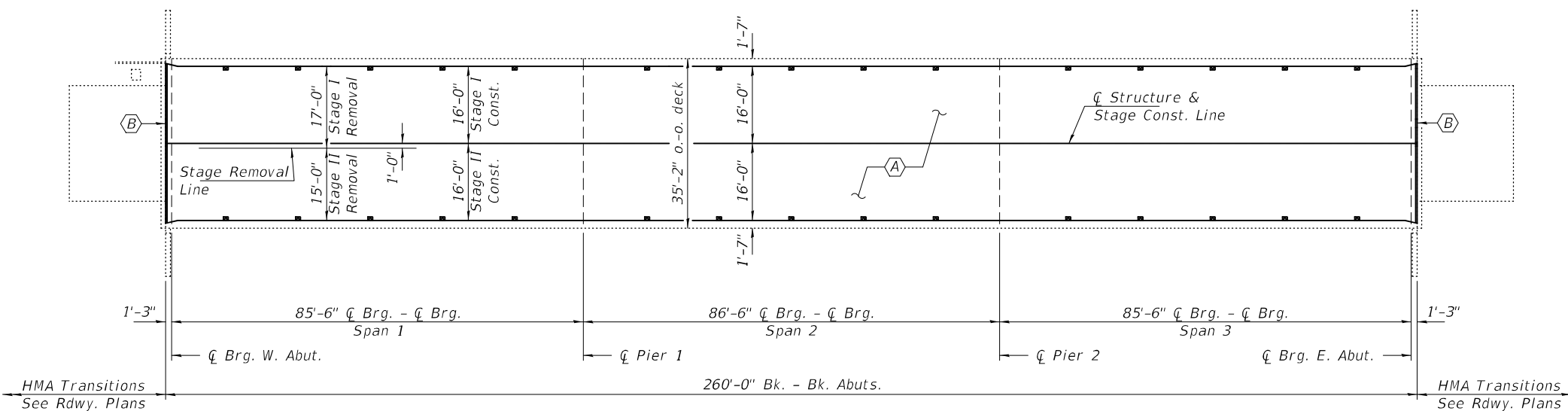
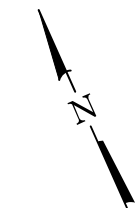
| | | | | | | | | | | | | |
|-------------|-----------------------------|-----------------------------|-----------|-----------------------------------------------------------|---------------------------------------|----------------|---------------------|--------------|-----------------|---------------------------|--|--|
| FILE NAME = | USER NAME = Nicholas.Rowden | DESIGNED - | REVISED - | STATE OF ILLINOIS DEPARTMENT OF TRANSPORTATION | SN 063-0009 STAGING DETAIL | F.A.P. RTE. 34 | SECTION | COUNTY MASON | TOTAL SHEETS 25 | SHEET NO. 19 | | |
| Default | CONTRACT NO. 72H24 | PLOT SCALE = 40.0397' / in. | CHECKED - | | | SCALE: | SHEET 1 OF 1 SHEETS | STA. | TO STA. | ILLINOIS FED. AID PROJECT | | |
| | | PLOT DATE = 10/19/2022 | DATE - | | | | | | | | | |
| | | | | | | | | | | | | |



ELEVATION

GENERAL NOTES

Plan dimensions and details relative to existing plans are subject to nominal construction variations. The Contractor shall field verify existing dimensions and details affecting new construction and make necessary approved adjustments prior to construction or ordering of materials. Such variations shall not be cause for additional compensation for a change in scope of the work, however, the Contractor will be paid for the quantity actually furnished at the unit price bid for the work.



PLAN

(A) - Bridge Deck Scarification $\frac{3}{4}$ " and $2\frac{1}{2}$ " Microsilica Concrete Overlay.

(B) - Polymer Concrete Nosing (See Repair B).

(C) - Structural Repair of Concrete

TOTAL BILL OF MATERIAL

| ITEM | UNIT | QUANTITY |
|----------------------------------------------------------------------|---------|----------|
| Bridge Deck Microsilica Concrete Overlay, $2\frac{1}{2}$ " | Sq. Yd. | 923 |
| Bridge Deck Scarification, $\frac{3}{4}$ " | Sq. Yd. | 923 |
| * Protective Coat | Sq. Yd. | 923 |
| Bridge Deck Grooving | Sq. Yd. | 867 |
| Polymer Concrete | Cu. Ft. | 4.0 |
| Structural Repair of Concrete (Depth Equal to or Less than 5 Inches) | Sq. Ft. | 20 |
| ** Deck Slab Repair (Full Depth, Type II) | Sq. Yd. | 5 |

* Applied on new concrete only.

** Quantity is estimated. Location and size of patches to be determined in the field by the Engineer.



EXPIRES 11-30-2024

DESIGNED - Stephen M. Ryan
 CHECKED - Adrian T. Halloway
 DRAWN - daburdell
 CHECKED - SMR ATH

PASSED

Jayme F. Schiff
 ENGINEER OF BRIDGES AND STRUCTURES

DATE - NOVEMBER 28, 2022

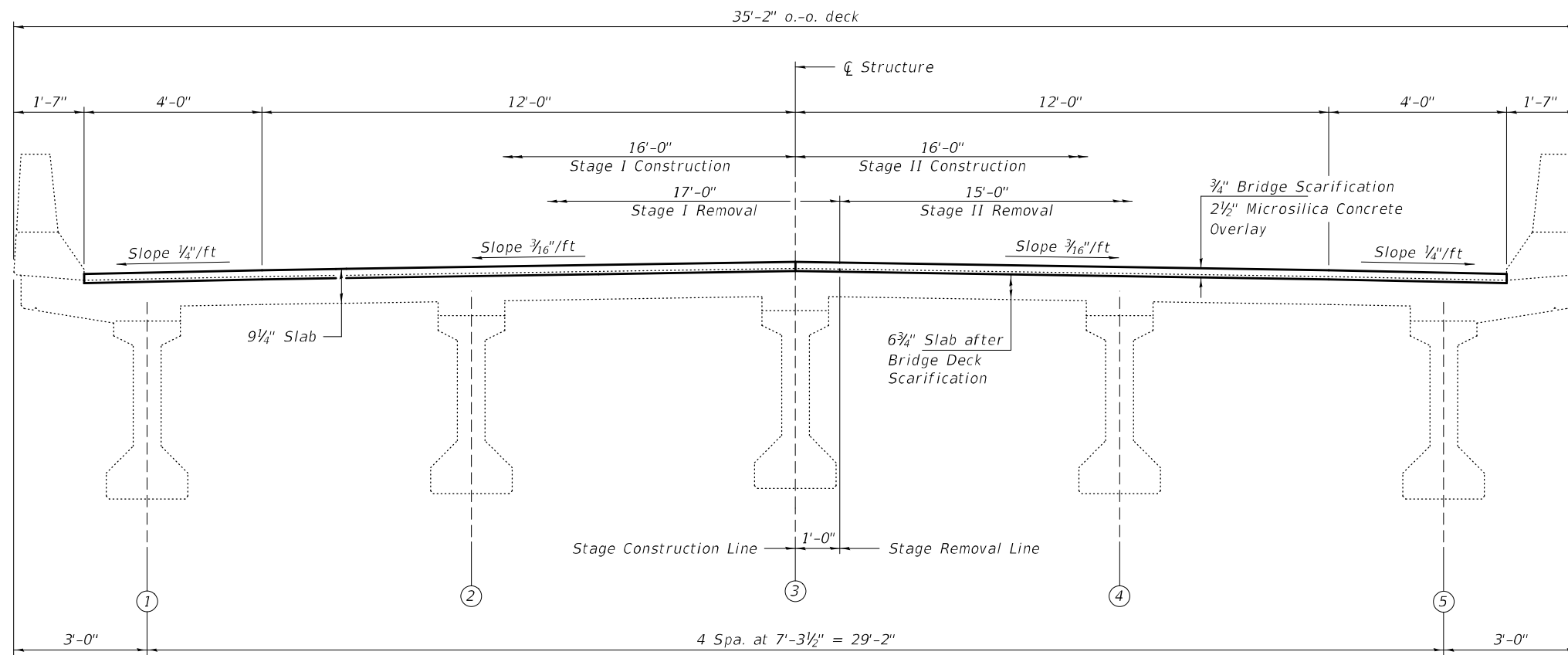
REVISED -
 REVISED -

STATE OF ILLINOIS
 DEPARTMENT OF TRANSPORTATION

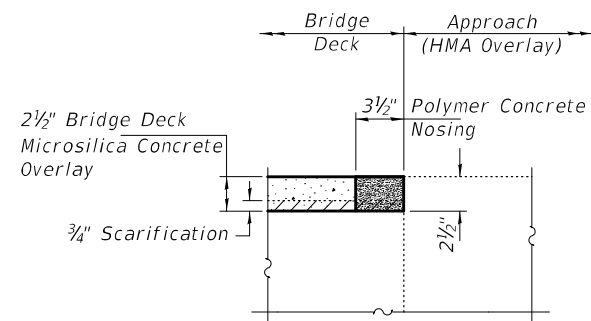
GENERAL PLAN AND ELEVATION
 FAP 34 (IL 97) OVER PECAN RUN CREEK
 SN 063-0009

SHEET NO. 1 OF 3 SHEETS

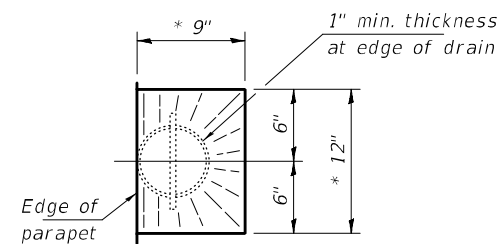
| F.A.P. RTE. | SECTION | COUNTY | TOTAL SHEETS | SHEET NO. |
|---------------------------|---------|--------|--------------|-----------|
| 34 | | MASON | 25 | 20 |
| CONTRACT NO. 72H24 | | | | |
| ILLINOIS FED. AID PROJECT | | | | |



CROSS SECTION
(Looking East)

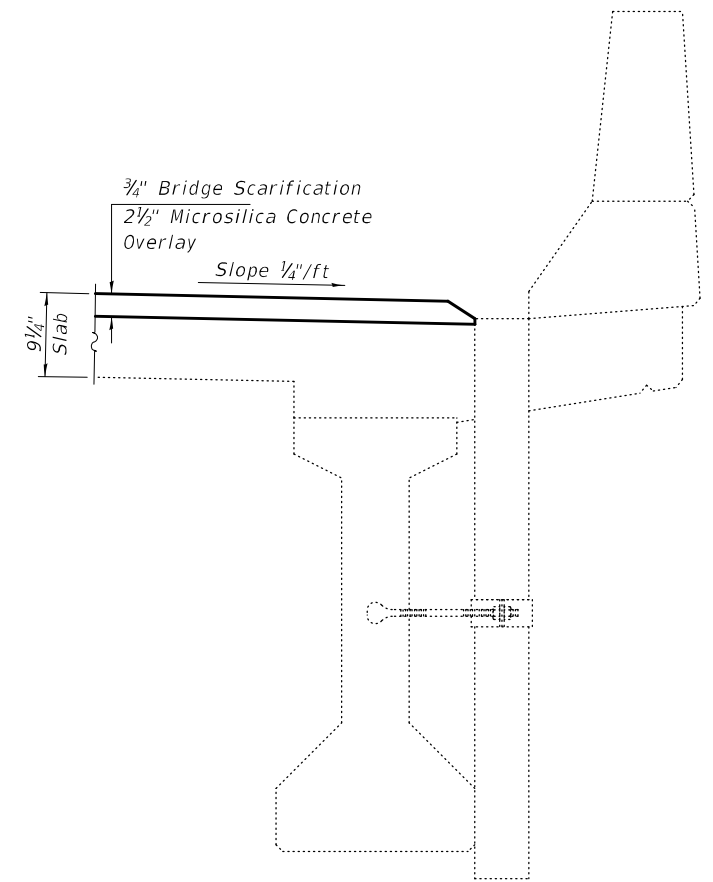


REPAIR B



DRAIN DETAIL

* slope to drain



SECTION THRU PARAPET
(at drain)

DESIGNED - SMR
CHECKED - ATH
DRAWN - daburdell
CHECKED - SMR ATH

PASSED

Joey F. J. [Signature]
ENGINEER OF BRIDGES AND STRUCTURES

DATE - NOVEMBER 28, 2022

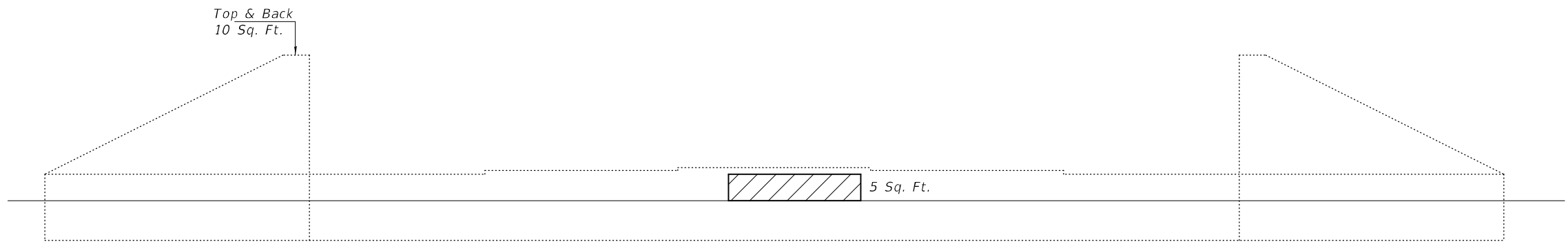
REVISED -
REVISED -

STATE OF ILLINOIS
DEPARTMENT OF TRANSPORTATION

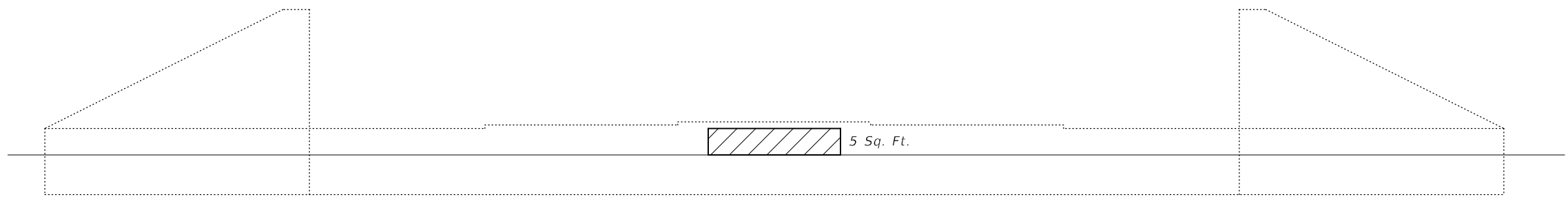
CROSS SECTION & DRAIN DETAIL
SN 063-0009

SHEET NO. 2 OF 3 SHEETS


| F.A.P. RTE. | SECTION | COUNTY | TOTAL SHEETS | SHEET NO. |
|---------------------------|---------|--------|--------------|-----------|
| 34 | | MASON | 25 | 21 |
| CONTRACT NO. 72H24 | | | | |
| ILLINOIS FED. AID PROJECT | | | | |



WEST ABUTMENT
(Looking West)




EAST ABUTMENT
(Looking East)

 Structural Repair of Concrete
(Depth ≤ 5")

BILL OF MATERIAL

| Item | Unit | Total |
|--------------------------------------------|---------|-------|
| Structural Repair of Concrete (Depth ≤ 5") | Sq. Ft. | 20 |

DESIGNED - SMR
CHECKED - ATH
DRAWN - daburdell
CHECKED - SMR ATH

PASSED

ENGINEER OF BRIDGES AND STRUCTURES

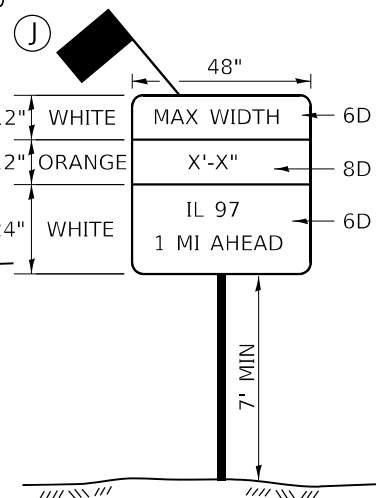
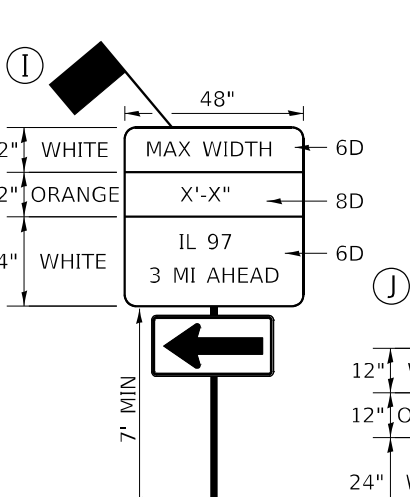
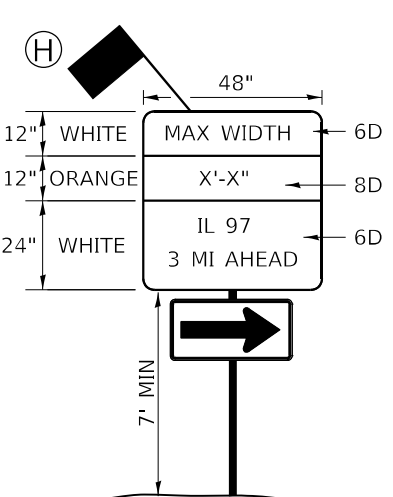
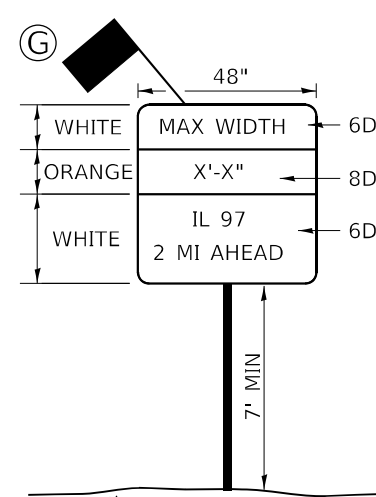
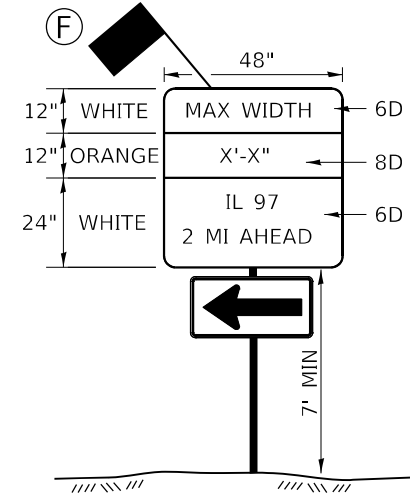
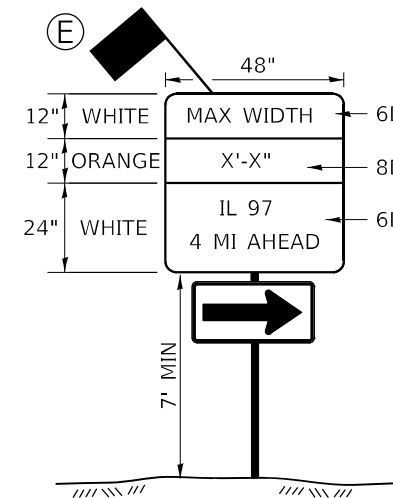
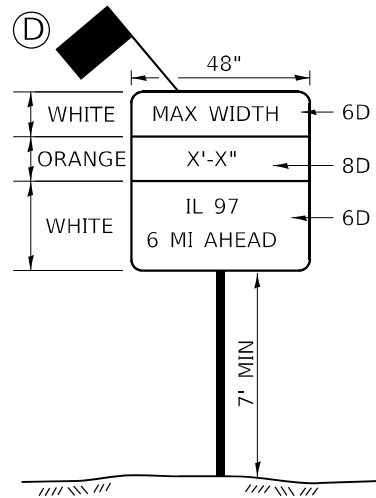
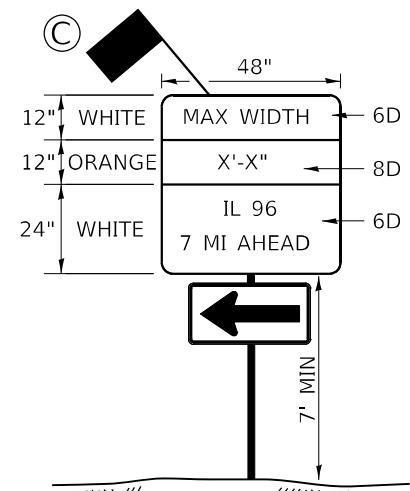
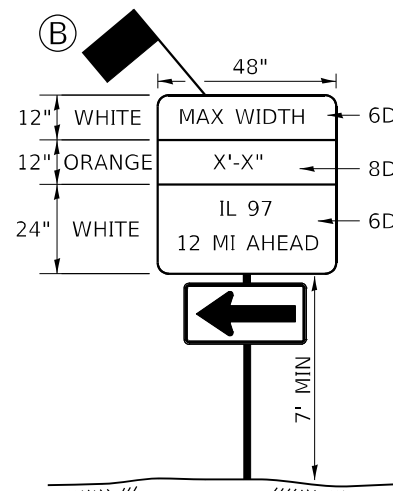
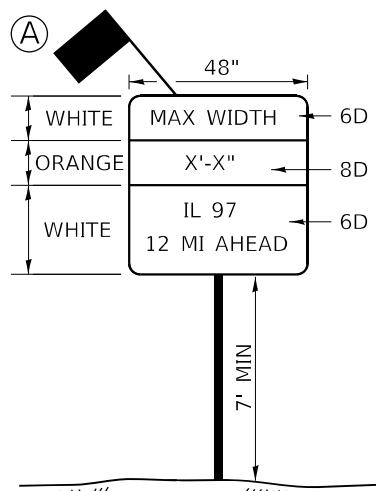
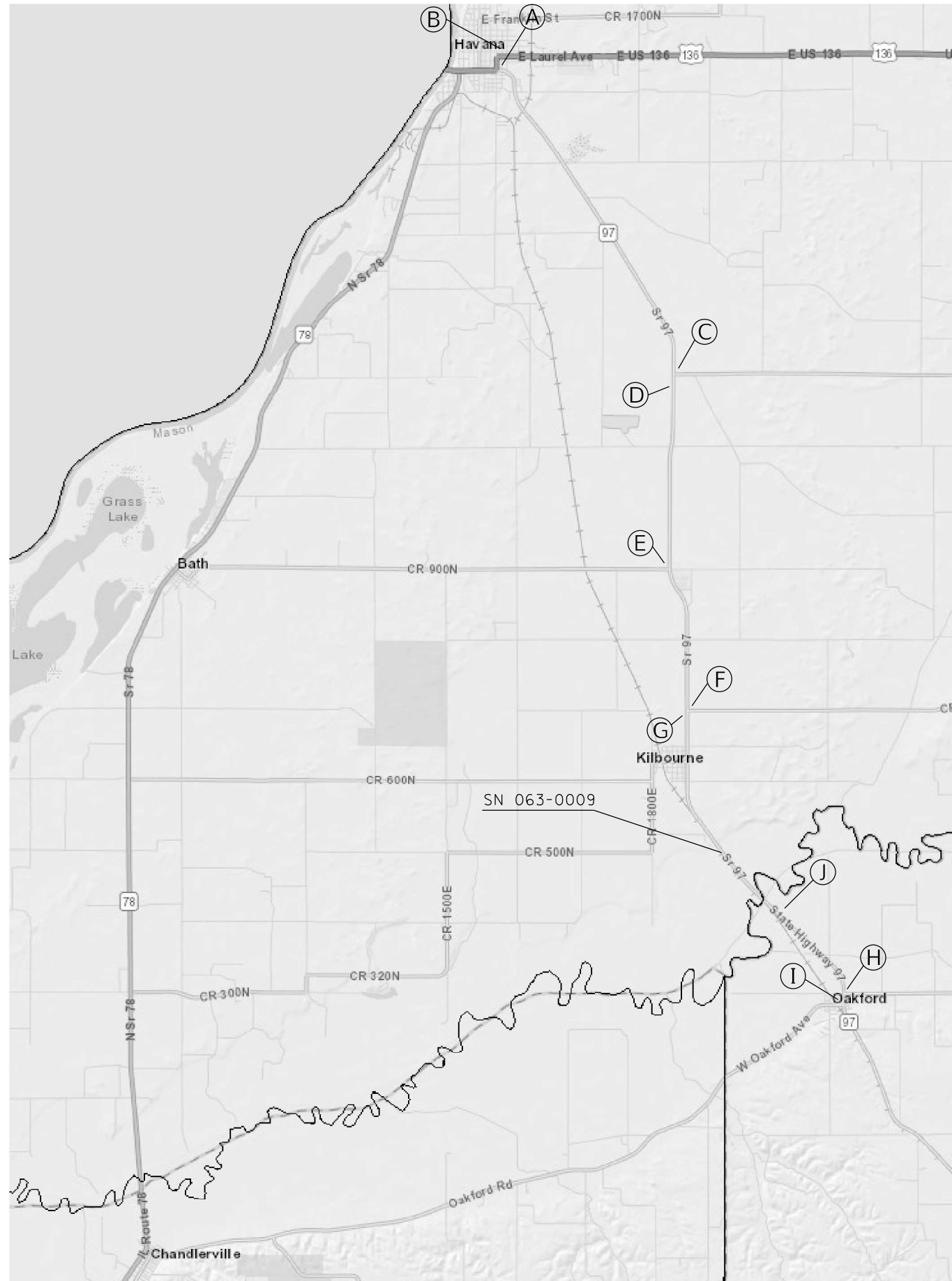
DATE - NOVEMBER 28, 2022
REVISED -
REVISED -

STATE OF ILLINOIS
DEPARTMENT OF TRANSPORTATION

SUBSTRUCTURE REPAIRS
SN 063-0009

SHEET NO. 3 OF 3 SHEETS

| F.A.P. RTE. | SECTION | COUNTY | TOTAL SHEETS | SHEET NO. |
|--------------------|---------|----------|------------------|-----------|
| 34 | | MASON | 25 | 22 |
| CONTRACT NO. 72H24 | | | | |
| | | ILLINOIS | FED. AID PROJECT | |



MODEL: Default
 FILE: M:\E:\p\illinois-sha\benefit\com\p\WIDOT\Documents\DOT\Office\Bdr\cct_0\Project\SD72H24\CAD\Bdr\cct_0\SD72H24_max-widbdr.dgn

| | | |
|------------------------------|------------|-----------|
| USER NAME = Nicholas.Rowden | DESIGNED - | REVISED - |
| PLOT SCALE = 100.0272' / in. | DRAWN - | REVISED - |
| PLOT DATE = 10/19/2022 | CHECKED - | REVISED - |
| | DATE - | REVISED - |

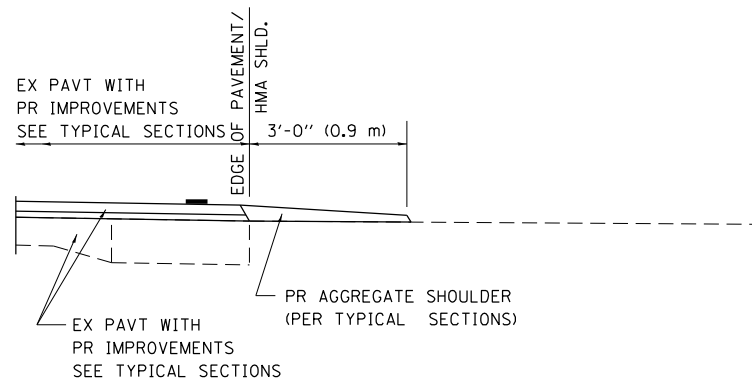
**STATE OF ILLINOIS
DEPARTMENT OF TRANSPORTATION**

IL 97 - MAX WIDTH SIGN DETAIL

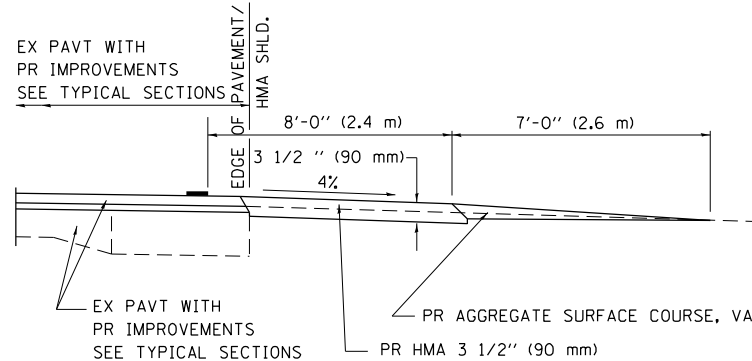
SCALE: SHEET 1 OF 1 SHEETS STA. TO STA.

| | | | | |
|---------------------------|---------|--------|--------------|-----------|
| F.A.P. RTE. | SECTION | COUNTY | TOTAL SHEETS | SHEET NO. |
| 34 | | MASON | 25 | 23 |
| CONTRACT NO. 72H24 | | | | |
| ILLINOIS FED. AID PROJECT | | | | |

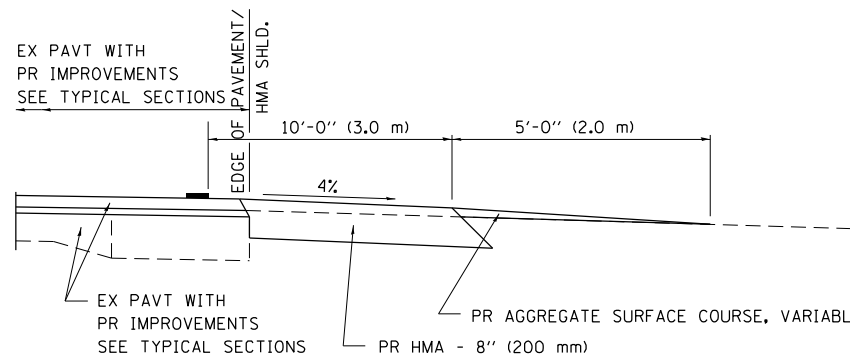
1RS-7, 2RS-3, 2B-1(BDR,BRR)



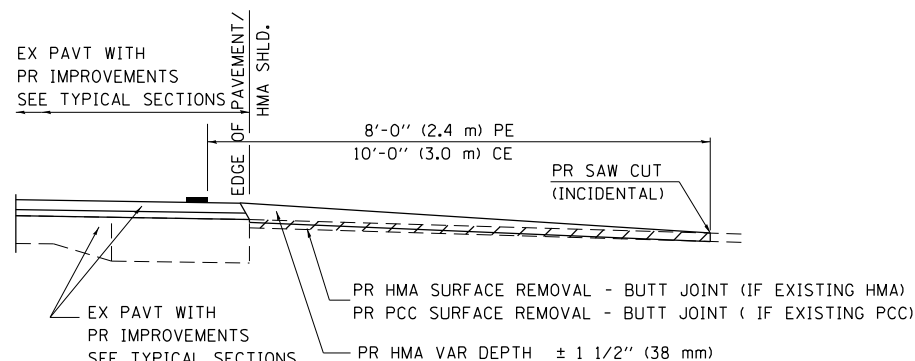
SECTION A-A FOR EX EARTH/AGGREGATE FE



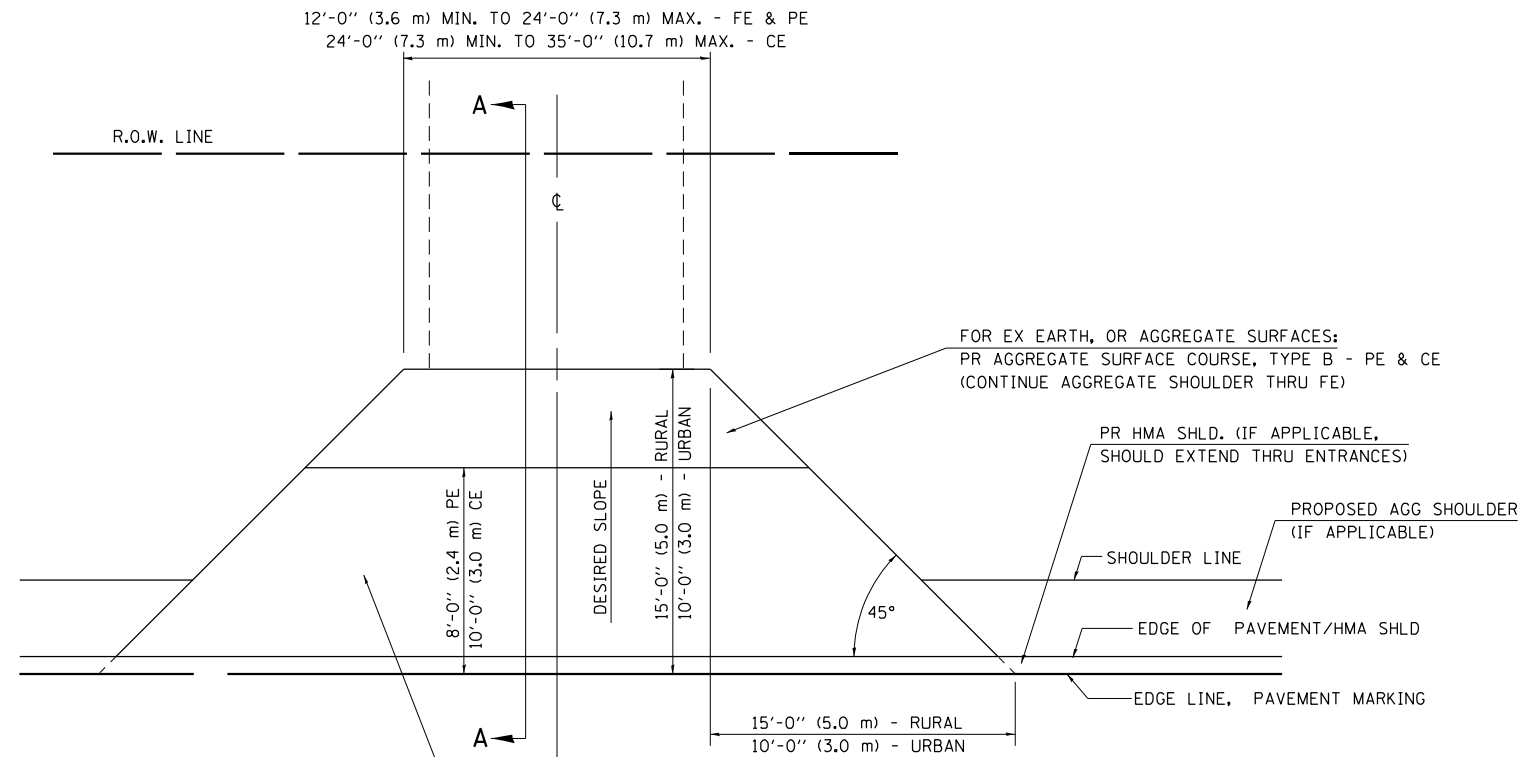
SECTION A-A FOR EX EARTH/AGGREGATE PE



SECTION A-A FOR EX EARTH/AGGREGATE CE & SIDE ROAD



SECTION A-A FOR EX HMA/PC CONCRETE PE, CE & SIDE ROAD



FOR EX EARTH OR AGGREGATE SURFACES:
 PR HMA SURFACE REMOVAL (IF APPLICABLE)
 PR AGGREGATE SHOULDER THRU - FE
 PR HMA CONCRETE 3 1/2" (90 mm) - PE
 PR HMA CONCRETE 8" (200 mm) - CE

FOR EX HMA CONCRETE SURFACES:
 PR HMA SURFACE REMOVAL-BUTT JOINT

FOR EX PCC SURFACES:
 PR PCC SURFACE REMOVAL-BUTT JOINT

GENERAL NOTES:

THE RESIDENT ENGINEER WILL DETERMINE THE EXACT TYPE OF IMPROVEMENT TO BE COMPLETED FOR ALL ENTRANCES, SIDEROADS AND MAILBOX TURNOUTS ON THIS PROJECT.

THE PLAN DETAILS AND SCHEDULES SHOULD BE USED AS A GUIDE FOR THE ENGINEER TO IMPLEMENT THE FINAL DESIGN. THE ENGINEER MAY DECIDE TO SALVAGE PORTIONS OF THE EXISTING ENTRANCE PAVEMENT STRUCTURE; THEREFORE, REDUCING PAY ITEM QUANTITIES. NO ADDITIONAL PAYMENT WILL BE ALLOWED FOR THIS REDUCTION IN QUANTITIES.

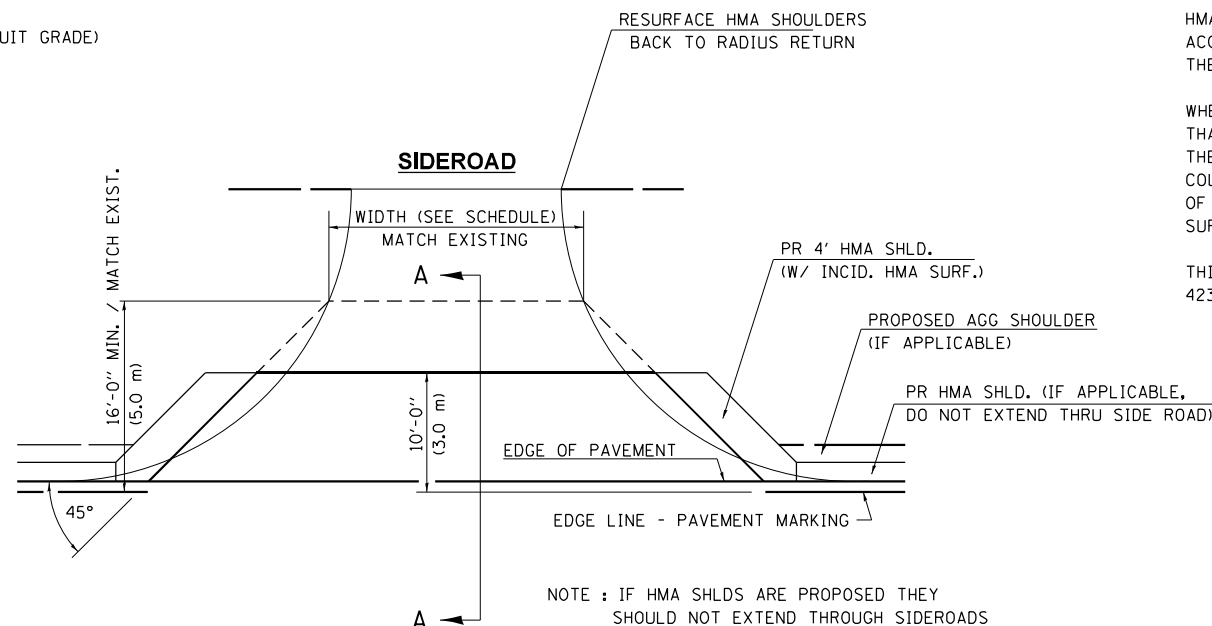
ANY WORK THE ENGINEER REQUIRES WHICH IS NOT COVERED BY A PAY ITEM CONTAINED IN THE PLANS WILL BE PAID FOR IN ACCORDANCE WITH ARTICLE 109.04 OF THE STANDARD SPECIFICATIONS.

HMA CONCRETE REQUIRED TO CONSTRUCT THE ENTRANCES SHALL BE IN ACCORDANCE WITH THE APPLICABLE PORTIONS OF SECTION 406 AND 408 OF THE STANDARD SPECIFICATIONS AND AS DIRECTED BY THE ENGINEER.

WHEN THE HMA CONCRETE PROPOSED FOR THE IMPROVEMENT IS THICKER THAN 3 INCHES (75 mm) AND REQUIRE PLACEMENT IN MORE THAN ONE LIFT. THE BOTTOM LIFT(S) SHALL MEET THE REQUIREMENTS OF HMA BASE COURSE IN SECTION 406 OF THE STANDARD SPECIFICATIONS AND THE TOP LIFT OF 2 INCHES (50 mm) SHALL MEET THE REQUIREMENTS OF HMA CONCRETE SURFACE COURSE, SUPERPAVE.

THIS WORK WILL BE PAID FOR IN ACCORDANCE WITH SECTIONS 351, 358, 408, 423 AND 440 OF THE STANDARD SPECIFICATIONS.

ALL DIMENSIONS ARE IN INCHES (MILLIMETERS) UNLESS OTHERWISE SHOWN.



NOTE : IF HMA SHLDS ARE PROPOSED THEY SHOULD NOT EXTEND THROUGH SIDEROADS

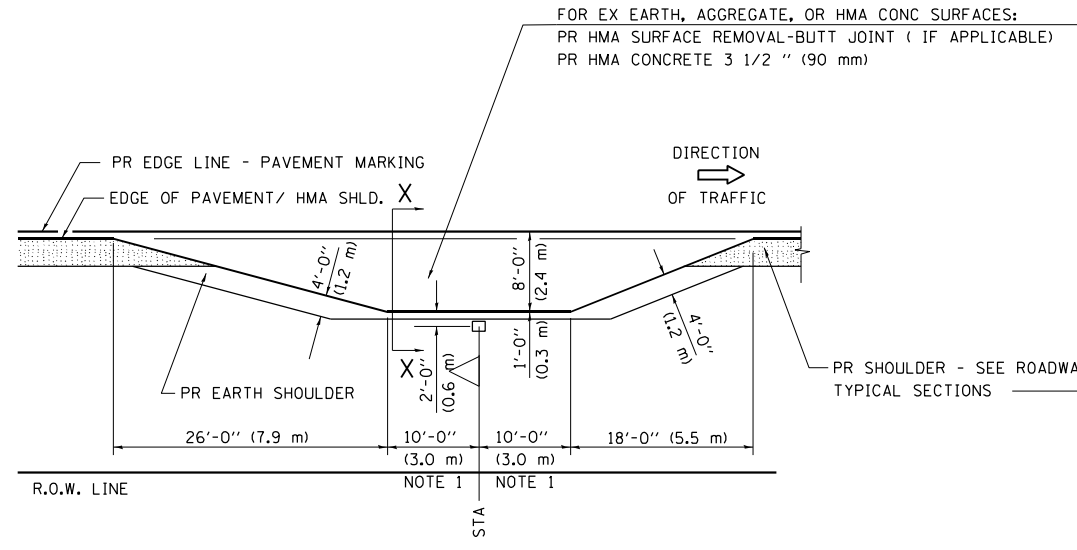
| | | | | | | | | | | | |
|-------------|-----------------------------------------------------------------------------------|--------------------------|-----------------------|-----------------------------------------------------------|--------------------------------------------------------------------------------------------------------------|---------------------------|---------|--------|--------------|-----------|--|
| FILE NAME = | USER NAME = Nicholas Rowden | DESIGNED - | REVISED - 2/19/03 JCN | STATE OF ILLINOIS DEPARTMENT OF TRANSPORTATION | DIST. 6 DETAILS FOR RURAL/URBAN ENT., MAILBOX TURNOUT & SIDEROADS W/O CONC. GUTTER (3P-PROJ.) | F.A.P. RTE. | SECTION | COUNTY | TOTAL SHEETS | SHEET NO. | |
| ENT PPP.DGN | 100T Offices\District 6\Projects\0672H24\CD\DRAWING\Asheets\06724-sht-details.dgn | CHECKED - JCN | REVISED - 4/01/04 JCN | | | 34 | * | MASON | 25 | 24 | |
| | PLOT SCALE = 40.0392' / in. | DATE - FEBRUARY 23, 1999 | REVISED - | | | CONTRACT NO. 72H24 | | | | | |
| | PLOT DATE = 10/19/2022 | | REVISED - | | | ILLINOIS FED. AID PROJECT | | | | | |

NOTE 1 IF MORE THAN ONE MAILBOX IS PRESENT, DIMENSION FROM CENTER OF END MAILBOX.

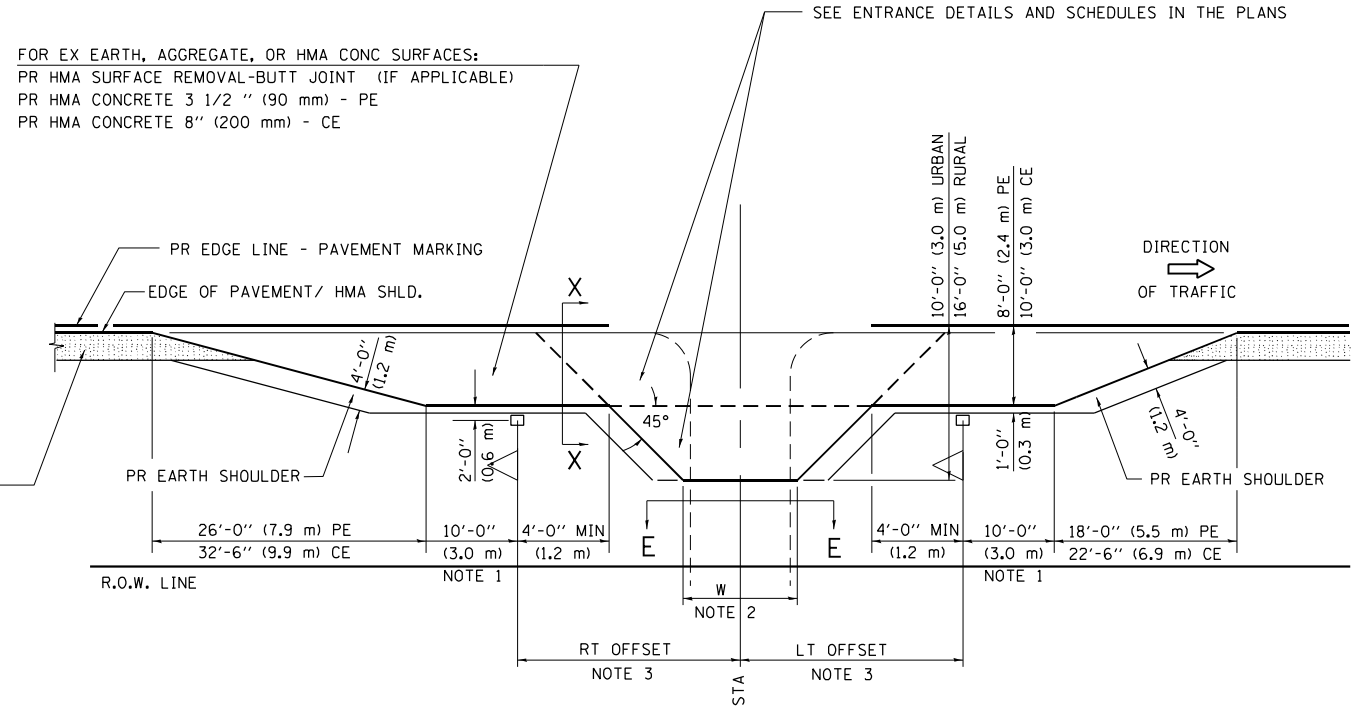
NOTE 2 FOR ENTRANCE LAYOUT DIMENSIONS AND SECTIONS A-A & E-E REFER TO THE SCHEDULES IN THE PLANS.

NOTE 3 BOTH LT OR RT OFFSETS FOR MAILBOX SHOWN USE OFFSET DIMENSION PER SCHEDULE AND REFER TO LAYOUT SHOWN ON THE PLAN.

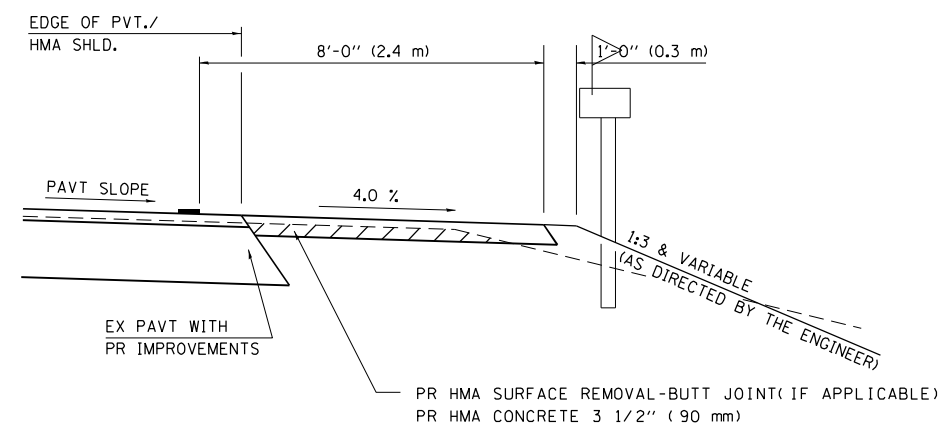
DETAILS OF MAILBOX TURNOUTS



PLAN - MAILBOX TURNOUTS

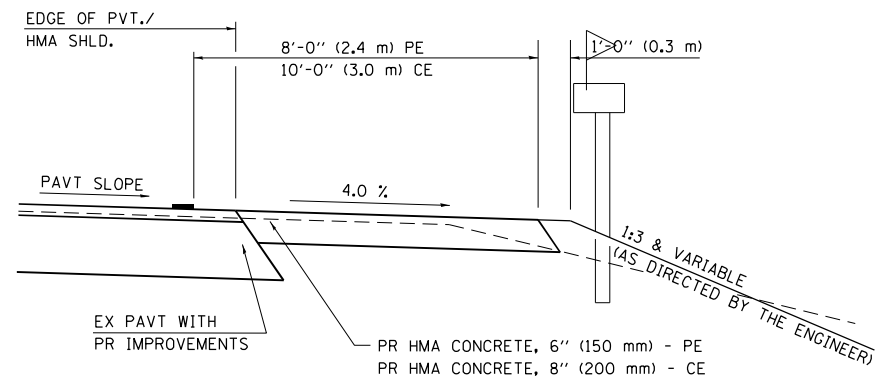


PLAN - COMBINED MAILBOX TURNOUT WITH TRAILING OR LEADING ENTRANCE



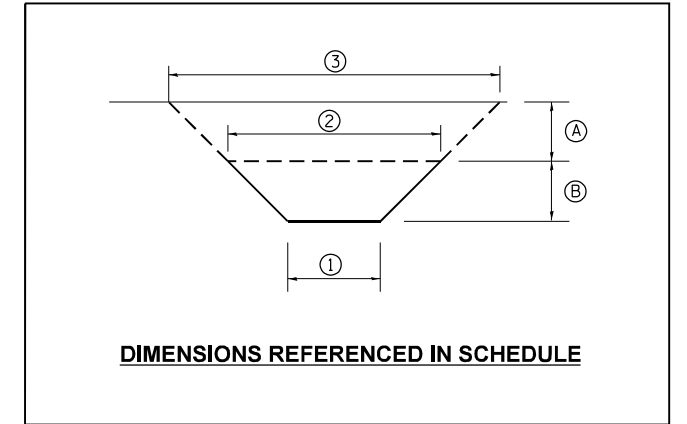
**SECTION X-X THRU MAILBOX TURNOUT
 ALSO APPLIES TO MAILBOX TURNOUTS COMBINED WITH
 EX EARTH, AGGREGATE, OR HMA PE & FE**

(DETAIL APPLIES WHEN M.B. TURNOUT DOES NOT EXIST.
 IF EXISTING, TREAT SAME AS ENTRANCE.)



**SECTION X-X THRU MAILBOX TURNOUT
 COMBINED WITH EX HMA CONC & PC CONC PE & CE**

(DETAIL APPLIES WHEN M.B. TURNOUT DOES NOT EXIST.
 IF EXISTING, TREAT SAME AS ENTRANCE.)



ALL DIMENSIONS ARE IN INCHES (MILLIMETERS)
 UNLESS OTHERWISE SHOWN.

| | | | | | | | | | | |
|-------------|-----------------------------|--------------------------|-----------------------|-----------------------------------------------------------|--------------------------------------------------------------------------------------------------------------|---------------------------|---------|--------|--------------|-----------|
| FILE NAME = | USER NAME = Nicholas.Rowden | DESIGNED - | REVISED - 2/19/03 JCN | STATE OF ILLINOIS DEPARTMENT OF TRANSPORTATION | DIST. 6 DETAILS FOR RURAL/URBAN ENT., MAILBOX TURNOUT & SIDEROADS W/O CONC. GUTTER (3P-PROJ.) | F.A.P. RTE. = | SECTION | COUNTY | TOTAL SHEETS | SHEET NO. |
| | | | REVISED - 4/01/04 JCN | | | 34 | . | MASON | 25 | 25 |
| | | | REVISOR - | | | CONTRACT NO. 72H24 | | | | |
| Default | PLOT DATE = 10/19/2022 | DATE - FEBRUARY 23, 1999 | REVISOR - | SCALE: SHEET 2 OF 2 SHEETS STA. TO STA. | | ILLINOIS FED. AID PROJECT | | | | |