

F.A.S. ROUTE	SECTION	COUNTY	TOTAL SHEETS	SHEET NO.
598	18-00101-00-PP	PIKE	29	1
		ILLINOIS	CONTRACT NO. 93798	

01-20-2023 LETTING ITEM 078

**INDEX OF SHEETS**

- 1 COVER SHEET & INDEX OF SHEETS
- 2 GENERAL NOTES, CONTROL POINTS, AND HIGHWAY STANDARDS
- 3-5 SUMMARY OF QUANTITIES
- 6-8 SCHEDULES OF QUANTITIES
- 9 TYPICAL SECTION
- 10-11 NEW SALEM PLAN
- 12-22 DOUBLE PLAN
- 23-26 SIDEWALK RAMP DETAILS
- 27-28 SPECIAL DETAILS
- 29 DETOUR PLAN

**STATE OF ILLINOIS**  
**DEPARTMENT OF TRANSPORTATION**  
**PLANS FOR PROPOSED**  
**STR/TARP/COVID/SMA**  
**PIKE COUNTY HIGHWAY**  
**DEPARTMENT**  
**SECTION 18-00101-00-PP**  
**F.A.S. ROUTE 598**  
**PROJECT NO. S83J(649)**  
**CH 2 (GRIGGSVILLE ROAD) RECLAMATION & RESURFACING**  
 FROM CH 3 TO IL 107  
**JOB NO. C-96-079-21**  
 R-4-W R-3-W

**CONTRACT NO. 93798**



**GAS & ELECTRIC**  
 AMEREN ILLINOIS  
 1900 W LAFAYETTE STREET  
 JACKSONVILLE, IL 62650

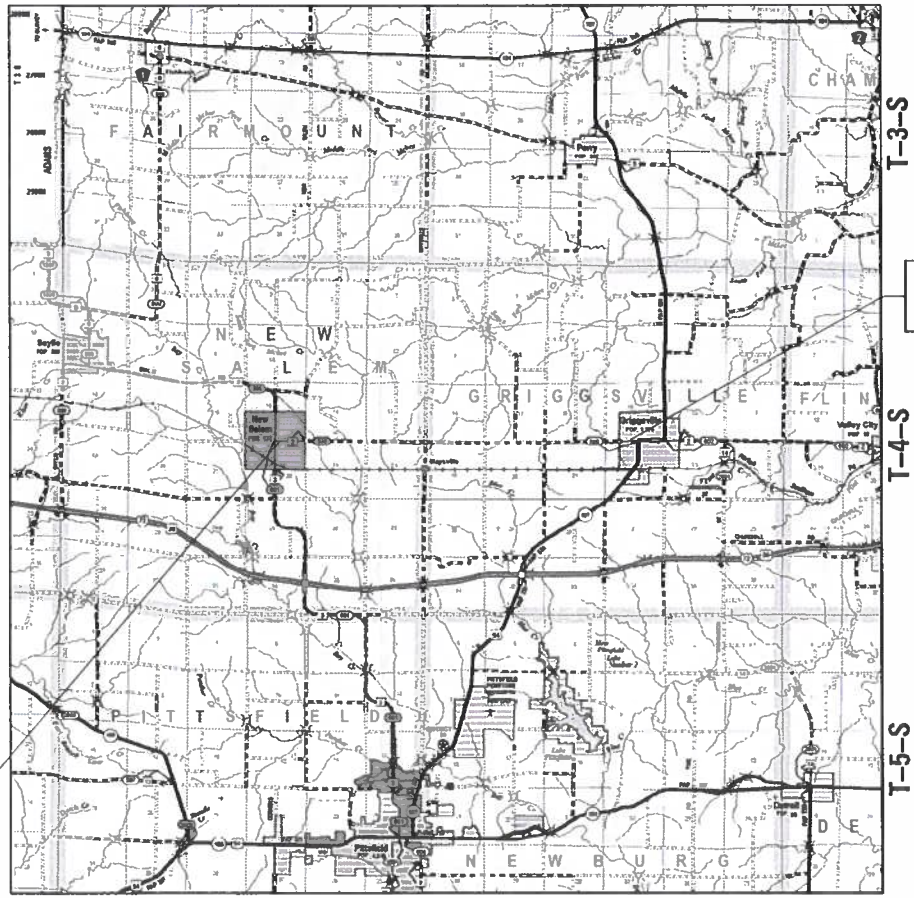
**WATER**  
 CITY OF GRIGGSVILLE  
 108 S COREY STREET  
 GRIGGSVILLE, IL 62340

**COMMUNICATIONS**  
 FRONTIER COMMUNICATIONS  
 300 WEST BEECHER  
 JACKSONVILLE, IL 62650

PIKE COUNTY WATER DIST. NO. 1  
 949 W WASHINGTON ST  
 PITTSFIELD, IL 62363

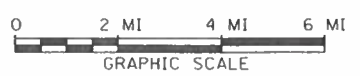
CASSCOMM  
 100 REDBUD ROAD  
 VIRGINIA, IL 62691

**SEWER**  
 CITY OF GRIGGSVILLE  
 108 S COREY STREET  
 GRIGGSVILLE, IL 62340



SECTION 18-00101-00-PP  
 ENDS  
 STATION 427+47.06

SECTION 18-00101-00-PP  
 BEGINS  
 STATION 100+00.77



GROSS LENGTH = 32,746.29 FT. = 6.20 MI  
 NET LENGTH = 32,746.29 FT. = 6.20 MI

J.U.L.I.E.  
 JOINT UTILITY LOCATION INFORMATION FOR EXCAVATION  
 1-800-892-0123  
 OR 811

FUNCTIONAL CLASSIFICATION: MAJOR COLLECTOR  
 ADT (2042): 950  
 DESIGN SPEED = 50 MPH

**3R GUIDELINES**

BRIAN M. BORGMAN  
 062-058271  
 REGISTERED PROFESSIONAL ENGINEER  
 STATE OF ILLINOIS

*B. B.* 9-20-22  
 SIGNATURE DATE  
 ENGINEER'S SEAL EXPIRES 11/30/2023

APPROVED	9-20	2022
<i>[Signature]</i> PIKE COUNTY ENGINEER		
PASSED	Oct 19,	2022
<i>[Signature]</i> DISTRICT SIX ENGINEER OF LOCAL ROADS & STREETS		
Released For Bid Based on Limited Review	Oct. 19,	2022
<i>[Signature]</i> REGION FOUR ENGINEER STATE OF ILLINOIS DEPARTMENT OF TRANSPORTATION		

Since 1945  
**Hutchison Engineering, Inc.**  
 JACKSONVILLE • PEORIA • SHOREWOOD  
 CARBONDALE • MOLINE  
 Illinois Professional Design Firm No. 184-000825  
 2022 JOB# 4900

MODEL: S:\MODEL\NAMES  
 FILE NAME: V:\9300 - Ch. 2 - Reconstruction (Pike)\CADD\CADD\_Sheets\01-4900-930-CoverSheet.dwg

GENERAL NOTES

1. THE LOCATION OF UNDERGROUND UTILITIES SHOWN ON THE PLANS REPRESENTS THE BEST KNOWLEDGE OF THE COUNTY AND THE INDICATED ADJUSTMENTS OR RECONSTRUCTION ARE CONSIDERED TO BE REASONABLY ACCURATE. IT SHALL BE THE CONTRACTOR'S RESPONSIBILITY TO VERIFY LOCATIONS OF UNDERGROUND INSTALLATIONS BEFORE STARTING CONSTRUCTION OPERATIONS. THE CONTRACTOR SHALL INDEMNIFY THE COUNTY, ITS OFFICERS, AND EMPLOYEES AGAINST ALL CLAIMS DUE TO DAMAGE TO CORPORATE OR PRIVATE PROPERTY RESULTING FROM HIS CONSTRUCTION OPERATIONS AS DESCRIBED IN ARTICLE 107.20 AND 107.26 OF THE STANDARD SPECIFICATIONS FOR ROAD AND BRIDGE CONSTRUCTION.
2. THE CONTRACTOR MAY BE REQUIRED TO CONDUCT SOME OF HIS GRADING OPERATIONS AROUND TRANSMISSION POLES AND UNDER TRANSMISSION LINES. THE ADDED COST OF DOING SO SHALL BE INCLUDED WITH THE COST OF THE EARTH EXCAVATION.
3. WHERE SECTION OR SUB-SECTION MONUMENTS ARE ENCOUNTERED, THE ENGINEER SHALL BE NOTIFIED BEFORE SUCH MONUMENTS ARE REMOVED. THE CONTRACTOR SHALL PROTECT AND PRESERVE PROPERTY MARKERS AND MONUMENTS UNTIL THE OWNER, AN AUTHORIZED SURVEYOR OR AGENT HAS WITNESSED OR OTHERWISE REFERENCED THEIR LOCATION.
4. THE CONTRACTOR SHALL NOTIFY THE AGENCIES AND UTILITIES AT LEAST 10 (TEN) DAYS PRIOR TO ANY CONSTRUCTION IN THE AREA AND SHALL COMPLY WITH ALL RESTRICTIONS FOR EQUIPMENT MOVEMENTS AND CLEARANCES AS REGARDS TO THEIR FACILITIES.
5. BEFORE STARTING ANY EXCAVATION, THE CONTRACTOR MUST CALL J.U.L.I.E. AT 1-800-892-0123 or 811 FOR FIELD LOCATIONS OF BURIED ELECTRICAL, TELEPHONE, GAS FACILITIES, AND ALL PUBLIC UTILITIES. A 48 HOUR NOTIFICATION IS REQUIRED.
6. VERIFICATION OF DIMENSIONS : IT IS THE CONTRACTOR'S RESPONSIBILITY TO VERIFY ALL DIMENSIONS AND CONDITIONS EXISTING IN THE FIELD PRIOR TO CONSTRUCTION AND ORDERING MATERIALS.
7. THE CONTRACTOR SHALL BE REQUIRED TO PROVIDE ACCESS TO ABUTTING PROPERTY OWNERS AT ALL TIMES DURING CONSTRUCTION OF THE PROJECT.
8. DURING CONSTRUCTION OPERATIONS, IF ANY LOOSE MATERIAL IS DEPOSITED IN THE FLOW LINE OF DITCHES, GUTTERS OR DRAINAGE STRUCTURES SO THAT THE NATURAL FLOW OF WATER IS OBSTRUCTED, IT SHALL BE REMOVED AT THE CLOSE OF EACH WORKING DAY. AT THE CONCLUSION OF CONSTRUCTION OPERATIONS, ALL DRAINAGE STRUCTURES SO AFFECTED SHALL BE FREE FROM ALL DEBRIS. THIS WORK SHALL BE INCLUDED WITH THE COST OF THE CONTRACT.
9. TRAFFIC SIGNS REMOVED MUST BE RESET AT THEIR PERMANENT LOCATIONS IN A WORKMANLIKE MANNER AND VISIBLE TO TRAFFIC ON THE ROADWAY AS DIRECTED BY THE ENGINEER. THESE SIGNS SHALL BE RESET BEFORE THE ROADWAY IS OPEN TO TRAFFIC. COST OF SUCH WORK SHALL BE INCLUDED WITH THE COST OF THE CONTRACT.
10. ANY AREAS DISTURBED BY CONSTRUCTION ACTIVITIES SHALL BE FERTILIZED, MULCHED, AND SEEDED IN ACCORDANCE WITH SECTIONS 250 AND 251 OF THE STANDARD SPECIFICATIONS. THIS WORK SHALL NOT BE PAID FOR SEPARATELY.
11. ALL PROPOSED PAVEMENT WIDTHS ARE MEASURED EDGE TO EDGE OF PAVEMENT UNLESS OTHERWISE SHOWN ON THE PLANS.
12. ANY REFERENCE TO STANDARDS THROUGHOUT THE PLANS SHALL BE INTERPRETED TO REFER TO THE LATEST STANDARDS OF THE ILLINOIS DEPARTMENT OF TRANSPORTATION AS SHOWN ON THE TABULATION OF REQUIRED STANDARDS SHOWN IN THE PLANS.
13. ALL EXISTING PRIVATELY OWNED UTILITIES REQUIRING ADJUSTMENT WILL BE MADE BY THE UTILITY COMPANY INVOLVED. WHERE NO PROVISIONS HAVE BEEN MADE FOR ADJUSTMENTS ON THE PLANS, NO ADDITIONAL COMPENSATION WILL BE ALLOWED DUE TO DELAYS OR INCONVENIENCES CAUSED BY THE UTILITY ADJUSTMENTS.

THE FOLLOWING RATES OF APPLICATION HAVE BEEN ASSUMED IN CALCULATING PLAN QUANTITIES :

TYPE B AGGREGATE _____	2.05 TON/CUBIC YARD
BITUMINOUS MATERIALS (PRIME COAT) _____	0.25 POUND/SQUARE FOOT
BITUMINOUS MATERIALS (TACK COAT) _____	0.025 POUND/SQUARE FOOT
HOT-MIX ASPHALT _____	0.056 TON/SQUARE YARD/INCH
CEMENT _____	0.065 POUND/POUND MILLED MATERIAL (140 POUND/CUBIC FOOT)

**MIXTURE REQUIREMENTS**

THE FOLLOWING MIXTURE REQUIREMENTS ARE APPLICABLE FOR THIS PROJECT:

LOCATION(S):	CH 2	CH 2	ENTRANCES	SIDEROADS
MIXTURE USE(S):	BINDER	SURFACE	INCIDENTAL	
AC/PG:	PG 64-22	PG 64-22	PG 64-22	
DESIGN AIR VOIDS	4% @ Ndes=50	4% @ Ndes=50	4% @ Ndes=50	
MIXTURE COMP (GRADATION)	IL-9.5FG	IL-9.5FG	IL-9.5	
FRICTION				
AGGREGATE	MIX "C"	N/A	MIX "C"	
MIXTURE WEIGHT	112	112	112	
QUALITY MANAGEMENT PROGRAM	QC/QA	QC/QA	QC/QA	
SUBLOT SIZE	N/A	N/A	N/A	
MATERIAL TRANSFER DEVICE (REQUIRED?)	N/A	N/A	N/A	

**STANDARDS**

000001-08	STANDARD SYMBOLS, ABBREVIATIONS AND PATTERNS
001006	DECIMAL OF AN INCH AND OF A FOOT
280001-07	TEMPORARY EROSION CONTROL SYSTEMS
406201-01	MAILBOX TURNOUT
424001-11	PERPENDICULAR CURB RAMPS FOR SIDEWALKS
542001-06	CONCRETE END SECTIONS FOR PIPE CULVERTS 15" THRU 84"
602401-07	PRECAST MANHOLE TYPE A 4' DIAMETER
602601-06	PRECAST REINFORCED CONCRETE FLAT SLAB TOP
602701-02	MANHOLE STEPS
604001-05	FRAME AND LIDS TYPE 1
604036-03	GRATE TYPE 8
606001-08	CONCRETE CURB TYPE B AND COMBINATION CONCRETE CURB AND GUTTER
701006-05	OFF-RD OPERATIONS, 2L, 2W, 15' TO 24" FROM PAVEMENT EDGE
701306-04	LANE CLOSURE, 2L, 2W, SLOW MOVING OPERATIONS DAY ONLY
701311-03	LANE CLOSURE, 2L, 2W, MOVING OPERATIONS-DAY ONLY
701501-06	URBAN LANE CLOSURE, 2L, 2W, UNDIVIDED
701801-06	SIDEWALK, CORNER OR CROSSWALK CLOSURE
701901-08	TRAFFIC CONTROL DEVICES
780001-05	TYPICAL PAVEMENT MARKINGS
BLR 17-4	TRAFFIC CONTROL DEVICES - DAY LABOR CONSTRUCTION
BLR 22-7	TYPICAL APPLICATION OF TRAFFIC CONTROL DEVICES FOR CONSTRUCTION ON RURAL LOCAL HIGHWAYS

**CONTROL POINTS**

POINT #	NORTHING	EASTING	STATION	OFFSET	ELEVATION	DESCRIPTION
1	1108077.382	2105268.897	103+27.33	16.63'RT	785.11	IRON ROD W/CAP SW QUAD OF BROWN ST AND GRIGGSVILLE RD
2	1108073.407	2105713.784	107+72.22	15.61'RT	798.59	IRON ROD W/CAP BY PP BETWEEN MASON ST AND BENNETT ST

MODEL: H:\MODELS\MAMES FILE: MAMES\_11-21-2017 - CT 2 Reconstruction (Rte) (CAD) (CADD) Sheets\02-4990-04-ct-2-gnomonics.dgn

CODE NO.	ITEM	UNIT	TOTAL QUANTITY	PIKE COUNTY
				ROADWAY 0005 RURAL
20800150	TRENCH BACKFILL	CU YD	51	51
28000500	INLET AND PIPE PROTECTION	EACH	7	7
* 35200500	CEMENT	100 WT	59891	59891
40200800	AGGREGATE SURFACE COURSE, TYPE B	TON	274	274
40600275	BITUMINOUS MATERIALS (PRIME COAT)	POUND	180213	180213
40600290	BITUMINOUS MATERIALS (TACK COAT)	POUND	18022	18022
40600370	LONGITUDINAL JOINT SEALANT	FOOT	32747	32747
40600982	HOT-MIX ASPHALT SURFACE REMOVAL - BUTT JOINT	SQ YD	322	322
40600990	TEMPORARY RAMP	SQ YD	54	54
40602965	HOT-MIX ASPHALT BINDER COURSE, IL-9.5FG, N50	TON	5687	5687
40604000	HOT-MIX ASPHALT SURFACE COURSE, IL-9.5FG, MIX "C", N50	TON	5634	5634
* 40800050	INCIDENTAL HOT-MIX ASPHALT SURFACING	TON	391	391
42001300	PROTECTIVE COAT	SQ YD	87	87
42400100	PORTLAND CEMENT CONCRETE SIDEWALK 4 INCH	SQ FT	781	781

\* SEE SPECIAL PROVISIONS  
 Δ SPECIALTY ITEMS

MODEL: 4800REV.DWG  
 FILE NAME: V:\AR00 - CH 2 Reclam\EXHIBIT (P\K\J)\AR001.dwg  
 2022

**Hutchison Engineering, Inc.**  
Since 1945  
 JACKSONVILLE • FORT LAUDERDALE • SHOREWOOD  
 CAROLINA • MOBILE  
Illinois Professional Design Firm No. 184-000215  
 JOB # 4900

USER NAME = CBurke	DESIGNED - CMB	REVISED -
	DRAWN - CMB	REVISED -
PLOT SCALE = 2 0000' / in.	CHECKED - BMB	REVISED -
PLOT DATE = 9/14/2022	DATE - 07/2022	REVISED -

**STATE OF ILLINOIS**  
**DEPARTMENT OF TRANSPORTATION**

**CH 2 (GRIGGSVILLE ROAD) RECLAMATION AND RESURFACING**  
**SUMMARY OF QUANTITIES**  
 SCALE: N/A SHEET 1 OF 3 SHEETS

F.A.S. RATE	SECTION	COUNTY	TOTAL SHEETS	SHEET NO.
598	18-00101-00-PP	PIKE	29	3
CONTRACT NO. 93798			ILLINOIS JOB NO. C-96-079-21	

CODE NO.	ITEM	UNIT	TOTAL QUANTITY	PIKE COUNTY
				ROADWAY 0005 RURAL
42400800	DETECTABLE WARNINGS	SQ FT	32	32
44000600	SIDEWALK REMOVAL	SQ FT	667	667
48102100	AGGREGATE WEDGE SHOULDER, TYPE B	TON	2070	2070
54213453	END SECTIONS 18"	EACH	2	2
550A0050	STORM SEWERS, CLASS A, TYPE 1 12"	FOOT	24	24
550A0090	STORM SEWERS, CLASS A, TYPE 1 18"	FOOT	290	290
55100200	STORM SEWER REMOVAL 6"	FOOT	13	13
55100500	STORM SEWER REMOVAL 12"	FOOT	13	13
55100700	STORM SEWER REMOVAL 15"	FOOT	300	300
60218300	MANHOLES, TYPE A, 4'-DIAMETER, TYPE 1 FRAME, OPEN LID	EACH	1	1
60219000	MANHOLES, TYPE A, 4'-DIAMETER, TYPE 8 GRATE	EACH	2	2
60500060	REMOVING INLETS	EACH	2	2
67100100	MOBILIZATION	L SUM	1	1
70300100	SHORT TERM PAVEMENT MARKING	FOOT	3275	3275

\* SEE SPECIAL PROVISIONS  
 Δ SPECIALTY ITEMS

MODEL - 1450011.XMNS  
 FILE NAME - V:\4900 - CH 2 Reconstruction (Pike) \CAD\DWG\SHEET\18-00101-00-PP.dwg  
 2022

<b>Hutchison Engineering, Inc.</b> <small>Since 1945</small> JACKSONVILLE • PEORIA • SHOREWOOD CARROVILLE • MOBILE <small>Professional Design Firm No. 154-000815</small> JOB # 4900	USER NAME = CBurke	DESIGNED - CMB	REVISED -	<b>STATE OF ILLINOIS</b> <b>DEPARTMENT OF TRANSPORTATION</b>	<b>CH 2 (GRIGGSVILLE ROAD) RECLAMATION AND RESURFACING</b> <b>SUMMARY OF QUANTITIES</b>	F.A.S. RTE. 598	SECTION 18-00101-00-PP	COUNTY PIKE	TOTAL SHEETS 29	SHEET NO. 4			
	PLOT SCALE = 2.0000' / 1 in.	CHECKED - BMB	REVISED -			SCALE: N/A	SHEET 2 OF 3 SHEETS	ILLINOIS JOB NO. C-96-079-21					
	PLOT DATE = 9/14/2022	DATE - 07/2022	REVISED -										
	CONTRACT NO. 93798												

CODE NO.	ITEM	UNIT	TOTAL QUANTITY	PIKE COUNTY
				ROADWAY 0005 RURAL
70300150	SHORT TERM PAVEMENT MARKING REMOVAL	SQ FT	1092	1092
70300221	TEMPORARY PAVEMENT MARKING - LINE 4" - PAINT	FOOT	21339	21339
Δ 78001110	PAINT PAVEMENT MARKING - LINE 4"	FOOT	21339	21339
78300202	PAVEMENT MARKING REMOVAL - WATER BLASTING	SQ FT	7113	7113
# Z0076600	TRAINEES	HOUR	1500	
* LR400899	FULL-DEPTH RECLAMATION, 10.0"	SQ YD	80095	80095
# Z0076604	TRAINEES TRAINING PROGRAM GRADUATE	HOUR	1500	
* X7010216	TRAFFIC CONTROL AND PROTECTION, (SPECIAL)	L SUM	1	1

\* SEE SPECIAL PROVISIONS

Δ SPECIALTY ITEMS

#0042

MODEL: 440001\MAPS  
 FILE NAME: V:\4400 - CH 2 Reclam\asctitem (P.kty\CAD\CADD Sheets\05-4900.plt 50033.dwg  
 2022

**Hutchison Engineering, Inc.**  
 Since 1945  
 JACKSONVILLE • PEORIA • SHOREWOOD  
 CARBONDALE • MOLINE  
 Illinois Professional Design Firm No. 184-002813  
 JOB # 4900

USER NAME = Cburke	DESIGNED - CMB	REVISED -
	DRAWN - CMB	REVISED -
PLOT SCALE = 2.0000' / in.	CHECKED - BMB	REVISED -
PLOT DATE = 9/14/2022	DATE - 07/2022	REVISED -

**STATE OF ILLINOIS**  
**DEPARTMENT OF TRANSPORTATION**

**CH 2 (GRIGGSVILLE ROAD) RECLAMATION AND RESURFACING**  
**SUMMARY OF QUANTITIES**

SCALE: N/A SHEET 3 OF 3 SHEETS

F.A.S. RTE.	SECTION	COUNTY	TOTAL SHEETS	SHEET NO.
598	18-00101-00-PP	PIKE	29	5
CONTRACT NO. 93798				
ILLINOIS JOB NO. C-96-079-21				

**SHOULDER SCHEDULE**

STATION TO STATION		SIDE	48102100
			AGGREGATE WEDGE SHOULDER, TYPE B
			TON
100+00.77	102+61.21	RT	10.7
100+00.77	102+66.60	LT	10.0
103+08.00	105+24.00	RT	9.0
103+98.00	111+53.00	LT	24.8
105+96.00	108+05.00	RT	9.1
108+77.00	181+15.00	RT	230.7
112+05.07	153+90.00	LT	134.3
154+70.00	209+45.00	LT	175.1
181+90.00	235+40.00	RT	170.7
210+30.00	235+35.00	LT	81.4
235+90.00	288+90.00	RT	169.6
236+00.00	288+95.00	LT	168.9
289+47.00	315+92.00	LT	85.4
289+54.00	342+82.00	RT	170.9
316+55.00	342+82.00	LT	85.1
343+50.00	370+67.00	LT	87.6
343+50.00	424+54.00	RT	258.0
371+17.00	397+18.00	LT	84.2
397+82.00	424+54.00	LT	86.2
425+00.00	427+47.06	RT	8.8
425+00.00	427+47.06	LT	8.8
<b>TOTAL</b>			<b>2069.3</b>
<b>USE</b>			<b>2070</b>

**PAVEMENT SCHEDULE**

STATION TO STATION		LR400899	35200500	40602965	40604000	40600275	40600290	40600370
		FULL-DEPTH RECLAMATION, 10.0"	CEMENT	HOT-MIX ASPHALT BINDER COURSE, IL-9.5FG, N50	HOT-MIX ASPHALT SURFACE COURSE, IL-9.5FG, MIX "C", N50	BITUMINOUS MATERIALS		LONGITUDINAL JOINT SEALANT
		SQ YD	100 WT	TON		PRIME COAT	TACK COAT	FOOT
100+00.77	100+26.75	111.5	83.4	7.8	7.8	250.9	25.1	26.0
100+26.75	105+00.00	1156.8	865.0	82.1	81.4	2602.9	260.3	473.3
105+00.00	110+00.00	1222.2	913.9	86.8	86.0	2750.0	275.0	500.0
110+00.00	140+25.00	7394.4	5529.2	525.0	520.1	16637.5	1663.8	3025.0
140+25.00	170+75.00	7455.6	5574.9	529.3	524.4	16775.0	1677.5	3050.0
170+75.00	201+25.00	7455.6	5574.9	529.3	524.4	16775.0	1677.5	3050.0
201+25.00	231+75.00	7455.6	5574.9	529.3	524.4	16775.0	1677.5	3050.0
231+75.00	262+25.00	7455.6	5574.9	529.3	524.4	16775.0	1677.5	3050.0
262+25.00	292+75.00	7455.6	5574.9	529.3	524.4	16775.0	1677.5	3050.0
292+75.00	323+25.00	7455.6	5574.9	529.3	524.4	16775.0	1677.5	3050.0
323+25.00	353+75.00	7455.6	5574.9	529.3	524.4	16775.0	1677.5	3050.0
353+75.00	384+25.00	7455.6	5574.9	529.3	524.4	16775.0	1677.5	3050.0
384+25.00	414+75.00	7455.6	5574.9	529.3	524.4	16775.0	1677.5	3050.0
414+75.00	427+47.06	3109.5	2325.1	220.8	218.7	6996.3	699.6	1272.1
<b>TOTAL</b>		<b>80094.5</b>	<b>59890.4</b>	<b>5686.1</b>	<b>5633.1</b>	<b>180212.6</b>	<b>18021.3</b>	<b>32746.3</b>
<b>USE</b>		<b>80095</b>	<b>59891</b>	<b>5687</b>	<b>5634</b>	<b>180213</b>	<b>18022</b>	<b>32747</b>

**INLET AND PIPE PROTECTION SCHEDULE**

STATION	OFFSET	28000500
		INLET AND PIPE PROTECTION EACH
101+43.04	14.60 LT	1
102+02.48	15.57 LT	1
102+69.64	15.72 LT	1
102+69.64	27.78 LT	1
103+07.48	15.81 LT	1
103+07.48	29.26 LT	1
104+42.47	17.18 LT	1
<b>TOTAL</b>		<b>7</b>
<b>USE</b>		<b>7</b>

**SHORT TERM PAVEMENT MARKING SCHEDULE**

STATION TO STATION	70300100	70300150	
	SHORT TERM PAVEMENT MARKING	SHORT TERM PAVEMENT MARKING REMOVAL	
	FOOT	SQ FT	
100+00.77	427+47.06	3274.6	1091.5
<b>TOTAL</b>		<b>3274.6</b>	<b>1091.5</b>
<b>USE</b>		<b>3275</b>	<b>1092</b>

**SIDEWALK SCHEDULE**

STATION TO STATION		SIDE	42400100	42400800	44000600	42001300
			PORTLAND CEMENT CONCRETE SIDEWALK 4 INCH	DETECTABLE WARNINGS	SIDEWALK REMOVAL	PROTECTIVE COAT
			SQ FT			SQ YD
100+17.01	100+32.73	LT	84.6		112.4	9.4
102+36.63	102+81.59	LT	178.2	8.0	102.4	19.8
102.97.95	103+18.50	LT	82.6	8.0	82.6	9.2
107+98.25	108+38.06	RT	211.2	8.0	144.8	23.5
108+57.84	109+01.59	RT	224.3	8.0	224.3	24.9
<b>TOTAL</b>			<b>780.9</b>	<b>32.0</b>	<b>666.5</b>	<b>86.8</b>
<b>USE</b>			<b>781</b>	<b>32</b>	<b>667</b>	<b>87</b>

**STORM SEWER SCHEDULE**

STATION	OFFSET	SIDE	TYPE	STANDARD AND DESIGN NUMBER	20800150	54213453	60218300	60219000	550A0050	550A0090
					TRENCH BACKFILL	END SECTIONS 18"	MANHOLES 4' DIAMETER		STORM SEWER CLASS A, TYPE 1	
					CU YD	EACH	A-1-O	A-8	12"	18"
101+43.04	14.60'	LT	END SECTION	542001		1				
			SS		6.1					58
102+02.47	15.57'	LT	MANHOLE	602401, 602601, 604036			1			
			SS		18.0					64
102+69.64	15.72'	LT	MANHOLE	602401, 602601, 604036			1			
			SS		1.3				12	
			SS		9.6					34
103+07.47	15.81'	LT	MANHOLE	602401, 602601, 604001			1			
			SS		1.3				12	
			SS		14.1					134
104+42.47	17.18'	LT	END SECTION	542001		1				
<b>TOTAL</b>					<b>50.4</b>	<b>2</b>	<b>1</b>	<b>2</b>	<b>24</b>	<b>290</b>
<b>USE</b>					<b>51</b>	<b>2</b>	<b>1</b>	<b>2</b>	<b>24</b>	<b>290</b>

**STORM SEWER REMOVAL SCHEDULE**

STATION TO STATION		SIDE	55100200	55100500	55100700	60500060
			STORM SEWER REMOVAL			REMOVING
			6"	12"	15"	INLETS
		FOOT				EACH
101+43.17	102+02.47	LT			59.3	
102+02.47	103+01.47	LT			105.0	1
	102+69.75	LT		12.1		
103+01.47	103+14.65	LT	12.8			
103+01.47	104+42.47	LT			135.0	1
<b>TOTAL</b>			<b>12.8</b>	<b>12.1</b>	<b>299.3</b>	<b>2</b>
<b>USE</b>			<b>13</b>	<b>13</b>	<b>300</b>	<b>2</b>

MODEL: H:\MODELS\MAMES FILE: Model - 032007 - CH 2 Reconstruction (P) \CADD\CADD\_Sheets\06-4990-sh-Sched01.dgn  
 2022

ENTRANCE AND MAILBOX TURNOUT SCHEDULE

STATION	SIDE	40200800	40800050
		AGGREGATE SURFACE COURSE, TYPE B	INCIDENTAL HOT-MIX ASPHALT SURFACING 2 1/2"
		TON	
100+94.79	RT	3.8	5.8
103+58.23	LT		17.3
103+75.65	RT	2.0	
106+03.42	RT		5.8
106+91.55	RT	4.6	
107+37.49	LT	4.5	
108+17.57	LT	3.8	
108+53.23	LT	2.1	
108+73.88	RT		5.8
109+75.95	RT	8.2	
110+04.84	LT	2.6	
111+44.28	RT	7.5	5.8
120+49.34	RT	5.2	
121+34.94	LT	3.5	
128+21.26	LT	3.2	
133+99.90	RT	3.2	
140+73.01	LT	4.3	
152+16.28	LT	2.9	
152+60.77	RT	2.5	
153+78.72	RT	3.2	
154+35.21	RT	2.9	
164+31.34	RT	4.0	
164+85.24	LT	2.9	
167+91.39	LT	2.8	
171+18.26	LT	2.7	
171+43.60	RT		5.8
176+17.26	RT		5.8
176+50.89	RT	2.3	
182+98.05	LT	3.3	
192+18.97	LT		5.8
192+32.61	LT	2.4	
194+93.02	RT	4.4	
195+15.26	LT		5.8
195+46.43	LT	2.4	
207+40.29	RT	2.2	
212+84.06	LT	2.5	
216+97.26	LT		5.8
217+22.09	LT		2.7
218+78.03	LT	2.7	
228+36.40	LT	2.4	

ENTRANCE AND MAILBOX TURNOUT SCHEDULE (CONT.)

STATION	SIDE	40200800	40800050
		AGGREGATE SURFACE COURSE, TYPE B	INCIDENTAL HOT-MIX ASPHALT SURFACING 2 1/2"
		TON	
229+38.11	RT	3.0	
236+01.09	LT	3.7	
236+44.49	LT		5.8
236+97.88	LT	2.8	
237+12.79	RT	2.2	
237+54.66	LT		5.8
237+97.61	LT	3.2	
238+54.66	RT	3.2	
239+15.98	LT		5.8
239+61.76	LT	4.9	
239+70.61	RT	2.8	
241+83.75	RT	2.2	
241+86.05	LT		5.8
242+26.86	RT	2.2	
247+02.85	LT	2.7	
252+42.22	RT	3.0	
253+06.11	LT		5.8
253+22.29	LT	2.2	
262+08.94	LT	2.9	
262+18.31	RT	3.8	
264+18.09	LT	3.3	
265+08.76	LT	2.8	
273+56.02	RT	2.4	
273+69.26	LT		5.8
274+63.78	LT	2.7	
279+63.95	LT		5.8
279+85.67	LT	4.3	
295+93.10	LT	2.8	
306+18.18	RT	2.3	
306+21.93	LT		5.8
316+18.54	RT	3.7	
316+58.79	LT	2.9	
329+50.43	RT	5.6	
329+55.91	LT	2.9	
336+01.70	RT	2.7	
339+14.63	LT	3.5	
357+47.36	RT	3.4	
357+62.04	LT	5.2	
368+25.26	RT	2.8	
369+61.59	RT	2.7	

ENTRANCE AND MAILBOX TURNOUT SCHEDULE (CONT.)

STATION	SIDE	40200800	40800050
		AGGREGATE SURFACE COURSE, TYPE B	INCIDENTAL HOT-MIX ASPHALT SURFACING 2 1/2"
		TON	
370+89.32	RT	4.0	
380+84.70	RT	3.4	
382+42.30	RT	3.7	
382+47.70	LT	3.7	
383+90.48	LT	2.4	
384+82.34	LT		5.8
384+94.87	RT		2.5
384+99.30	LT	2.3	
397+43.94	RT		2.2
397+73.64	RT		5.8
399+74.15	RT		2.1
402+01.74	LT	3.4	
406+60.42	RT	4.8	
408+25.61	RT	4.8	
409+07.76	LT		5.8
409+27.72	LT	2.2	
410+22.19	RT	3.5	
411+36.16	RT	3.9	
412+86.56	LT	2.4	
414+77.25	RT	7.3	
414+85.75	LT	2.0	
415+57.46	LT	2.5	
418+36.65	LT		5.8
418+50.97	LT	2.3	
418+71.99	LT		2.6
418+86.45	LT		5.8
420+95.85	LT		5.8
420+98.83	RT		2.2
421+52.84	LT	2.7	
421+65.87	LT	2.3	
422+07.75	LT		5.8
422+35.51	RT	2.4	
422+44.89	LT		5.8
423+05.12	LT		5.8
423+24.01	LT		2.9
425+16.37	LT		5.8
426+11.04	LT		5.8
426+21.29	LT		2.1
<b>TOTAL</b>		<b>273.2</b>	<b>199.1</b>
<b>USE</b>		<b>274</b>	<b>200</b>

MODEL: H:\MODELS\MHIES  
 FILE: MHIES\_07-2007 - CT 2 Reconstruction (Pike) (CADD) (CADD\_Sheets) (07-2007-05-21) (Sheet) (02).dgn  
 2022

**SIDE STREET SCHEDULE**

STATION	STREET	SIDE	WIDTH (FT)	40800050	
				INCIDENTAL HOT-MIX ASPHALT SURFACING	
				2 1/2"	
			FOOT	TON	
102+85.10	Brown St	RT	12		5.5
102+89.59	Brown St	LT	16		5.2
105+60.18	Mason St	RT	12		11.9
108+47.78	Bennett St	RT	16		10.1
111+78.95	Locust St	LT	12		6.4
154+24.81	375TH ST	LT	17		13.6
181+55.56	380TH ST	RT	17		16.1
209+83.76	385TH LN	LT	16		17.4
235+66.12	S 390TH ST	RT	18		10.1
235+67.44	N 390TH ST	LT	18		11.6
289+16.23	N 400TH	LT	14		7.4
289+19.53	S 400TH	RT	14		10.2
316+20.97	405TH ST	LT	16		10.9
343+16.60	S 410TH	RT	16		9.4
343+16.67	N 410TH	LT	15		7.4
370+89.46	415TH ST	LT	13		9.0
397+50.31	420TH LN	LT	15		12.9
424+73.71	S OAK ST	RT	17		5.0
424+75.76	N OAK ST	LT	17		10.2
<b>TOTAL</b>					<b>190.3</b>
<b>USE</b>					<b>191</b>

**PAVEMENT MARKING SCHEDULE**

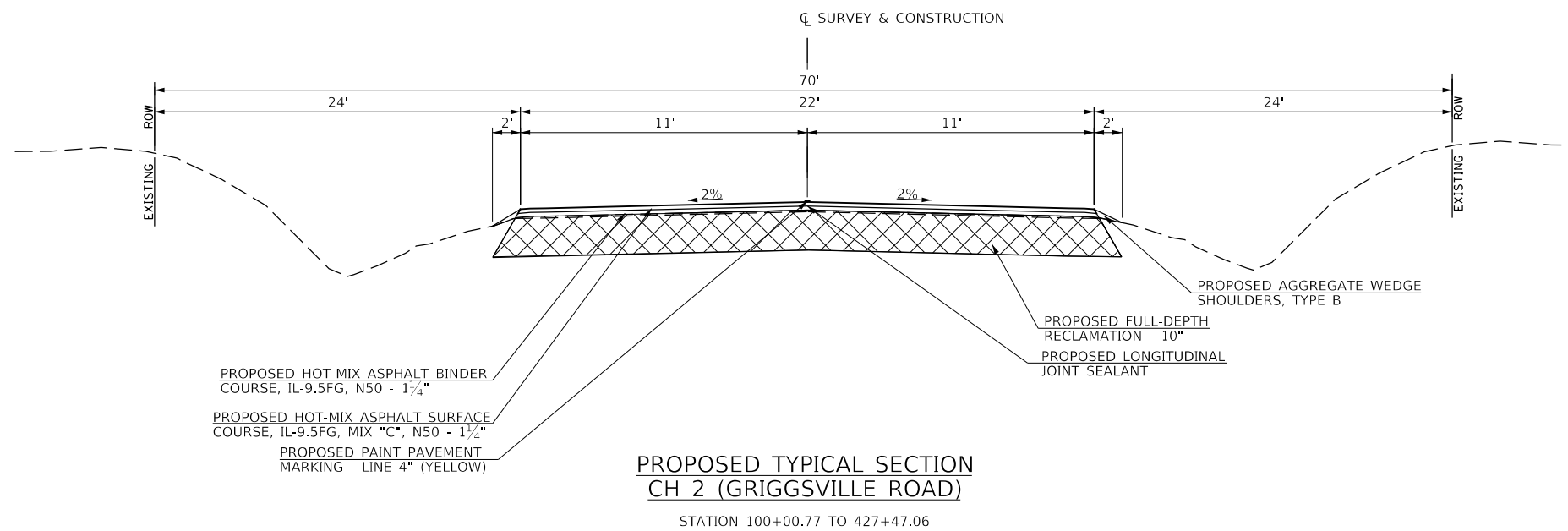
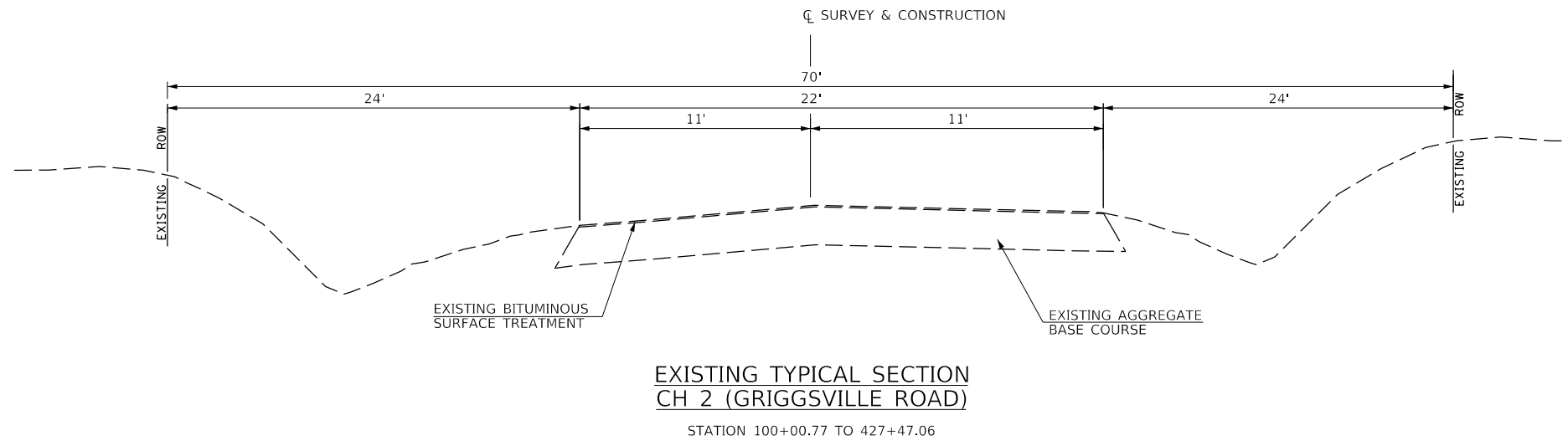
STATION TO STATION	SIDE	DESCRIPTION	78001110		78300202	
			PAINT PAVEMENT MARKING		PAVEMENT MARKING REMOVAL - WATER BLASTING	
			4"			
			YELLOW SKIP-DASH	SOLID YELLOW		
			FOOT	SQ FT		
100+16.77	112+00.00	CL	EB NO PASSING		1183.2	394.4
100+16.77	115+20.00	CL	WB NO PASSING		1503.2	501.1
112+10.00	410+00.00	CL	CL SKIP DASH	7447.5		2482.5
124+90.00	131+00.00	CL	EB NO PASSING		610.0	203.3
132+70.00	138+40.00	CL	WB NO PASSING		570.0	190.0
147+00.00	154+40.00	CL	EB NO PASSING		740.0	246.7
155+00.00	162+40.00	CL	WB NO PASSING		740.0	246.7
168+70.00	176+00.00	CL	EB NO PASSING		730.0	243.3
176+60.00	183+80.00	CL	WB NO PASSING		720.0	240.0
186+50.00	189+80.00	CL	EB NO PASSING		330.0	110.0
194+20.00	197+80.00	CL	WB NO PASSING		360.0	120.0
222+70.00	228+50.00	CL	EB NO PASSING		580.0	193.3
230+70.00	236+50.00	CL	WB NO PASSING		580.0	193.3
248+10.00	251+00.00	CL	EB NO PASSING		290.0	96.7
255+50.00	259+00.00	CL	WB NO PASSING		350.0	116.7
377+70.00	383+50.00	CL	EB NO PASSING		580.0	193.3
385+70.00	391+00.00	CL	WB NO PASSING		530.0	176.7
410+00.00	427+47.06	CL	EB NO PASSING		1747.1	582.4
410+00.00	427+47.06	CL	WB NO PASSING		1747.1	582.4
<b>TOTAL</b>				<b>7447.5</b>	<b>13890.6</b>	<b>7112.7</b>
<b>USE</b>				<b>21339</b>		<b>7113</b>

**BUTT JOINT SCHEDULE**

STATION TO STATION	40600982		40600990
	HOT-MIX ASPHALT SURFACE REMOVAL - BUTT JOINT		TEMPORARY RAMP
	SQ YD		
100+00.77	100+50.77	199.5	33.2
426+97.06	427+47.06	122.2	20.4
<b>TOTAL</b>		<b>321.7</b>	<b>53.6</b>
<b>USE</b>		<b>322</b>	<b>54</b>

MODEL: H:\MODELS\MAMES FILE: MAMES\_18-001 - CT 2 Reconstruction (Pike)\CADD\CADD\_Sheets\08-4900-sht-Schedule03.dwg  
 2022





MODEL: H:\MODELS\MH\FILES  
 FILE NAME: 18-00101-00-PP - CH 2 Reconstruction (Rte)\CADD\CADD\_Sheets\CP-4900-CH-2-TYP.DGN  
 2022

Since 1945  
**Hutchison Engineering, Inc.**  
 JACKSONVILLE • PEORIA • SHOREWOOD  
 CARBONDALE • MOULINE  
 Illinois Professional Design Firm No. 184-000825  
 2022      JOB # 4900

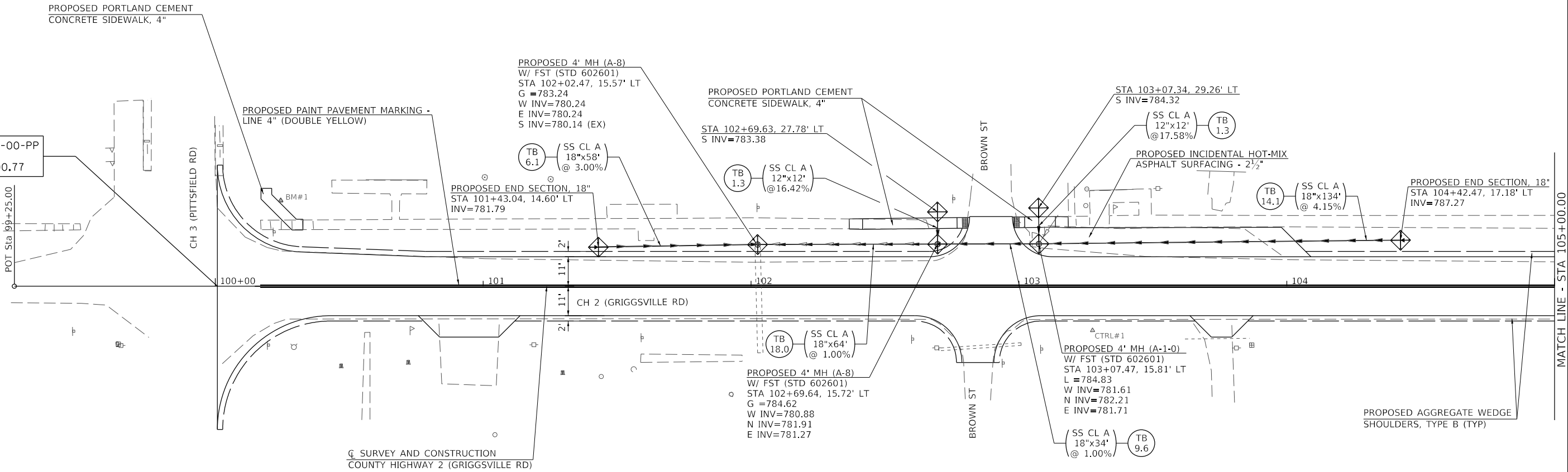
USER NAME = C.Burke	DESIGNED - BMB	REVISED -
	DRAWN - CMB	REVISED -
PLOT SCALE = 10,0000' / In.	CHECKED - BMB	REVISED -
PLOT DATE = 9/14/2022	DATE - 07/2022	REVISED -

**STATE OF ILLINOIS  
DEPARTMENT OF TRANSPORTATION**

**CH 2 (GRIGGSVILLE ROAD) RECLAMATION AND RESURFACING  
TYPICAL SECTION**  
 SCALE: N/A      SHEET 1 OF 1 SHEETS

F.A.S. RTE.	SECTION	COUNTY	TOTAL SHEETS	SHEET NO.
598	18-00101-00-PP	PIKE	29	9
CONTRACT NO. 93798				
ILLINOIS JOB NO. C-96-079-21				

SECTION 18-00101-00-PP  
BEGINS  
STATION 100+00.77



POT Sta 89+25.00

CH 3 (PITTSFIELD RD)

PROPOSED PAINT PAVEMENT MARKING -  
LINE 4" (DOUBLE YELLOW)

PROPOSED 4' MH (A-8)  
W/ FST (STD 602601)  
STA 102+02.47, 15.57' LT  
G = 783.24  
W INV=780.24  
E INV=780.24  
S INV=780.14 (EX)

PROPOSED PORTLAND CEMENT  
CONCRETE SIDEWALK, 4"  
STA 102+69.63, 27.78' LT  
S INV=783.38

STA 103+07.34, 29.26' LT  
S INV=784.32

(SS CL A)  
12"x12'  
@ 17.58%

PROPOSED INCIDENTAL HOT-MIX  
ASPHALT SURFACING - 2 1/2"

(SS CL A)  
18"x134'  
@ 4.15%

PROPOSED END SECTION, 18"  
STA 104+42.47, 17.18' LT  
INV=787.27

PROPOSED END SECTION, 18"  
STA 101+43.04, 14.60' LT  
INV=781.79

CH 2 (GRIGGSVILLE RD)

(SS CL A)  
18"x64'  
@ 1.00%

PROPOSED 4' MH (A-8)  
W/ FST (STD 602601)  
STA 102+69.64, 15.72' LT  
G = 784.62  
W INV=780.88  
N INV=781.91  
E INV=781.27

CTRL#1  
PROPOSED 4' MH (A-1-0)  
W/ FST (STD 602601)  
STA 103+07.47, 15.81' LT  
L = 784.83  
W INV=781.61  
N INV=782.21  
E INV=781.71

(SS CL A)  
18"x34'  
@ 1.00%

PROPOSED AGGREGATE WEDGE  
SHOULDERS, TYPE B (TYP)

Q SURVEY AND CONSTRUCTION  
COUNTY HIGHWAY 2 (GRIGGSVILLE RD)

MATCH LINE - STA 105+00.00



20' 0' 20'  
GRAPHIC SCALE IN FEET

BM #1 - RR SPIKE IN 1ST PP EAST OF PITTSFIELD RD  
ON SOUTH SIDE  
STATION 100+24.48, 32' LT  
ELEV 783.97

**LEGEND**

- PROPOSED INLET & PIPE PROTECTION

MODEL Default  
FILE Name: 18-00101-00-PP - CH 2 Reconstruction (Pike) (CADD) (CADD\_Sheets) (D:\4900-Sub-Plan01.dgn)  
2022

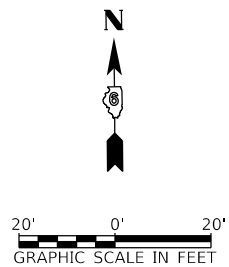
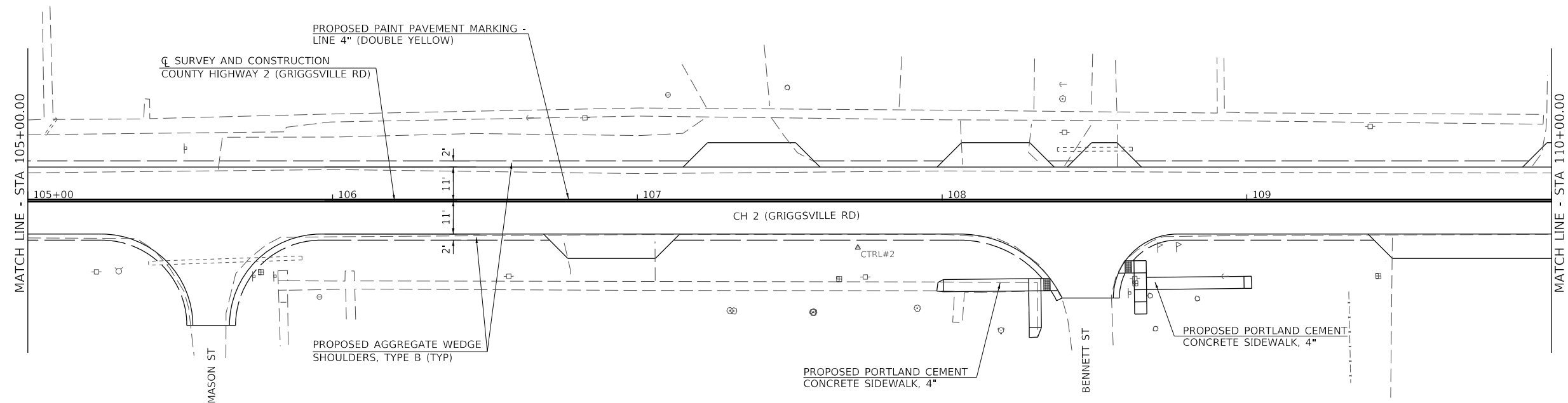
Since 1945  
**Hutchison Engineering, Inc.**  
JACKSONVILLE • PEORIA • SHOREWOOD  
CARBONDALE • MOULINE  
Illinois Professional Design Firm No. 184-000825  
JOB# 4900

USER NAME = CBurke	DESIGNED - CMB	REVISED -
DRAWN - CMB	REVISIONS -	
PLOT SCALE = 40,0000' / In.	CHECKED - BMB	REVISED -
PLOT DATE = 9/14/2022	DATE - 07/2022	REVISED -

**STATE OF ILLINOIS  
DEPARTMENT OF TRANSPORTATION**

**CH 2 (GRIGGSVILLE ROAD) RECLAMATION AND RESURFACING  
NEW SALEM PLAN**  
SCALE: 1"=20' SHEET 1 OF 2 SHEETS STA. 100+00.77 TO STA. 105+00.00

F.A.S. RTE.	SECTION	COUNTY	TOTAL SHEETS	SHEET NO.
598	18-00101-00-PP	PIKE	29	10
CONTRACT NO. 93798				
ILLINOIS JOB NO. C-96-079-21				



MODEL Default  
 FILE Name: V:\2009 - CH 2 Reconstruction (Pike)\CADD\CADD\_Sheets\11-4900-sht-21b102.dgn  
 2022

Since 1945  
**Hutchison Engineering, Inc.**  
 JACKSONVILLE • PEORIA • SHOREWOOD  
 CARBONDALE • MOULNE  
 Illinois Professional Design Firm No. 184-000825  
 JOB# 4900

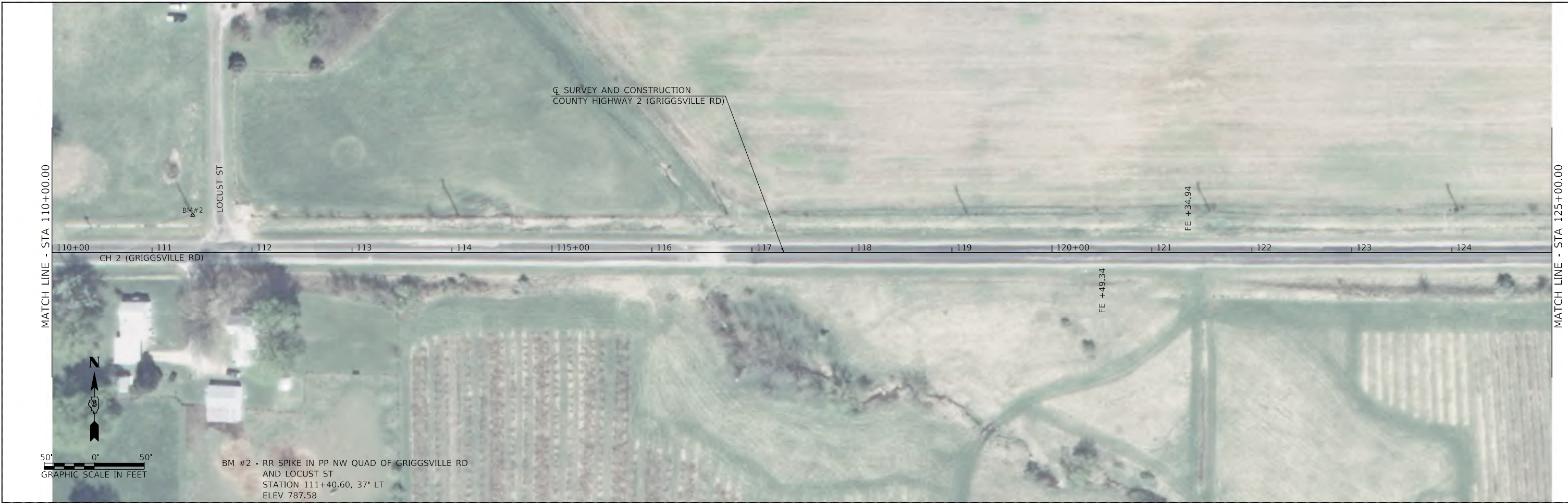
USER NAME = CBurke	DESIGNED - CMB	REVISED -
	DRAWN - CMB	REVISED -
PLOT SCALE = 40,0000 ' / In.	CHECKED - BMB	REVISED -
PLOT DATE = 9/14/2022	DATE - 07/2022	REVISED -

**STATE OF ILLINOIS  
 DEPARTMENT OF TRANSPORTATION**

**CH 2 (GRIGGSVILLE ROAD) RECLAMATION AND RESURFACING  
 NEW SALEM PLAN**

SCALE: 1"=20'    SHEET 2    OF 2    SHEETS    STA. 105+00.00    TO STA. 110+00.00

F.A.S. RTE.	SECTION	COUNTY	TOTAL SHEETS	SHEET NO.
598	18-00101-00-PP	PIKE	29	11
CONTRACT NO. 93798				
ILLINOIS JOB NO. C-96-079-21				



MODEL: \\MODELS\MAMES  
 FILE: \\FILES: 07-2007 - CT 2 Reconstruction (Pike)\CADD\CADD\_Sheets\12-4900-ct-2-pp-ppm01.dgn  
 2022

Since 1945  
**Hutchison Engineering, Inc.**  
 JACKSONVILLE • PEORIA • SHOREWOOD  
 CARBONDALE • MOLINE  
 Illinois Professional Design Firm No. 184-000825  
 JOB # 4900

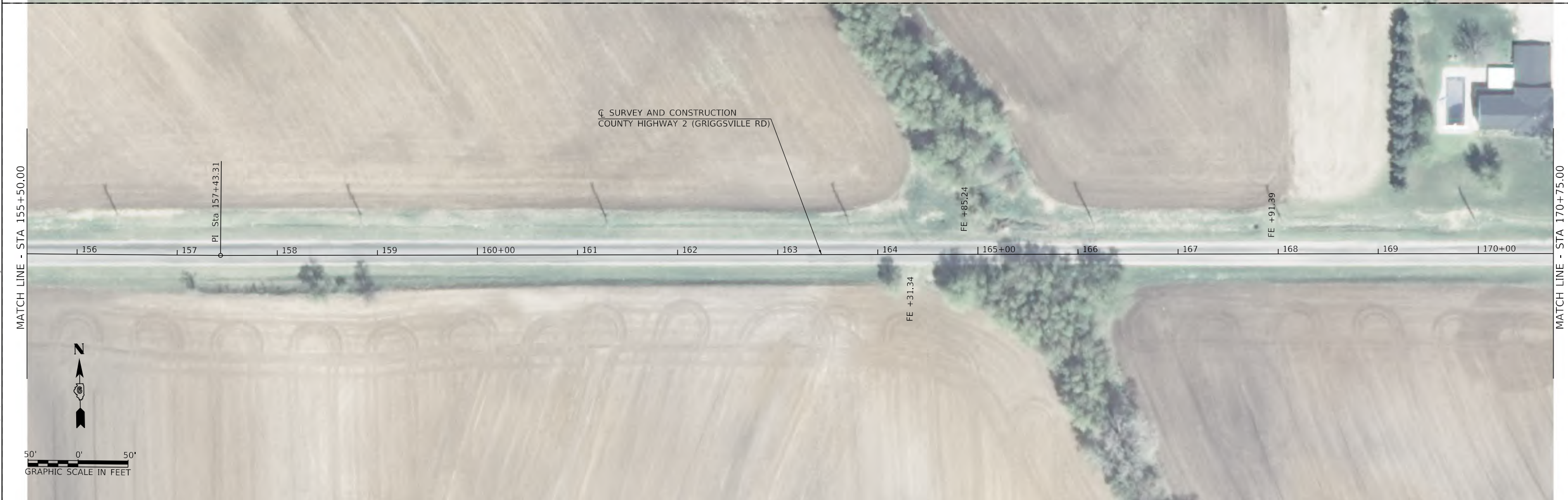
USER NAME =	CBurke	DESIGNED -	CMB	REVISED -	
DRAWN -	CJB	REVISIONS -			
PLOT SCALE =	100,0000' / In.	CHECKED -	BMB	REVISED -	
PLOT DATE =	9/14/2022	DATE -	07/2022	REVISED -	

**STATE OF ILLINOIS**  
**DEPARTMENT OF TRANSPORTATION**

**CH 2 (GRIGGSVILLE ROAD) RECLAMATION AND RESURFACING**  
**DOUBLE PLAN**

SCALE: 1"=50'    SHEET 1 OF 11 SHEETS    STA. 110+00.00 TO STA. 140+25.00

F.A.S. RTE.	SECTION	COUNTY	TOTAL SHEETS	SHEET NO.
598	18-00101-00-PP	PIKE	29	12
CONTRACT NO. 93798			ILLINOIS JOB NO. C-96-079-21	



MODEL: \\MODELS\MAMES  
 FILE: \\FILES: 07-2007 - CT 2 Reconstruction (Pike)\CADD\CADD\_Sheets\13-4900-01-50-RPm02.dwg  
 2022

Since 1945  
**Hutchison Engineering, Inc.**  
 JACKSONVILLE • PEORIA • SHOREWOOD  
 CARBONDALE • MOLINE  
 Illinois Professional Design Firm No. 184-000825  
 JOB # 4900

USER NAME = Cburke	DESIGNED - CMB	REVISED -
	DRAWN - CJB	REVISED -
PLOT SCALE = 100,0000' / In.	CHECKED - BMB	REVISED -
PLOT DATE = 9/14/2022	DATE - 07/2022	REVISED -

**STATE OF ILLINOIS**  
**DEPARTMENT OF TRANSPORTATION**

**CH 2 (GRIGGSVILLE ROAD) RECLAMATION AND RESURFACING**  
**DOUBLE PLAN**

SCALE: 1"=50'    SHEET 2    OF 11    SHEETS    STA. 140+25.00    TO STA. 170+75.00

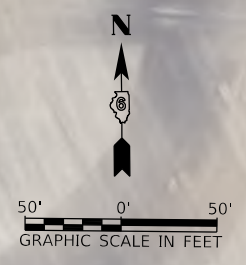
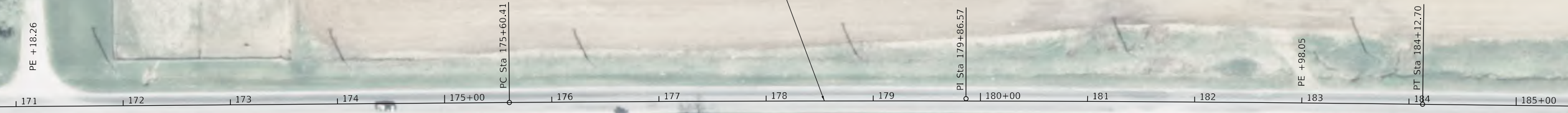
F.A.S. RTE.	SECTION	COUNTY	TOTAL SHEETS	SHEET NO.
598	18-00101-00-PP	PIKE	29	13
CONTRACT NO. 93798				
ILLINOIS JOB NO. C-96-079-21				

PROP. CURVE PRCH21  
 PI STA. = 179+86.57  
 $\Delta = 1^\circ 10' 44''$  (RT)  
 $D = 0^\circ 08' 18''$   
 $R = 41,420.00'$   
 $T = 426.16'$   
 $L = 852.29'$   
 $E = 2.19'$   
 $e = NC$   
 T.R. = N/A  
 S.E. RUN = N/A  
 P.C. STA. = 175+60.41  
 P.T. STA. = 184+12.70

CL SURVEY AND CONSTRUCTION  
 COUNTY HIGHWAY 2 (GRIGGSVILLE RD)

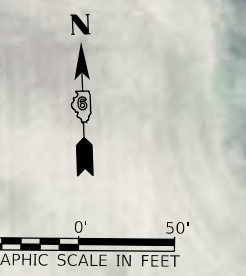
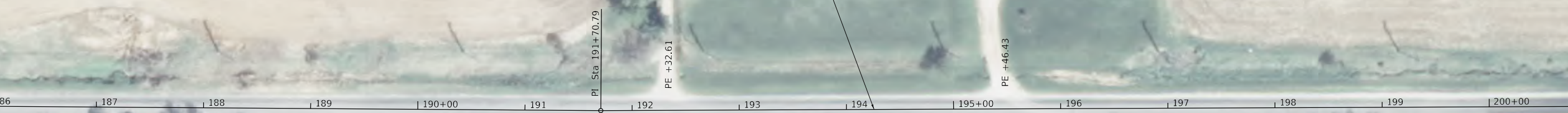
MATCH LINE - STA 170+75.00

MATCH LINE - STA 186+00.00



MATCH LINE - STA 186+00.00

MATCH LINE - STA 201+25.00



MODEL: \MODELS\MAMES  
 FILE: \MAMES\_072007 - CT 2 Reconstruction (Rte) \CADD\CADD\_Sheets\14-4900-sh-50-RPlan02.dgn

Since 1945  
**Hutchison Engineering, Inc.**  
 JACKSONVILLE • PEORIA • SHOREWOOD  
 CARBONDALE • MOLINE  
 Illinois Professional Design Firm No. 184-000825

USER NAME =	CBurke	DESIGNED -	CMB	REVISED -	
DRAWN -	CJB	REVISOR -		REVISION -	
PLOT SCALE =	100,0000' / In.	CHECKED -	BMB	REVISOR -	
PLOT DATE =	9/14/2022	DATE -	07/2022	REVISION -	

**STATE OF ILLINOIS  
 DEPARTMENT OF TRANSPORTATION**

**CH 2 (GRIGGSVILLE ROAD) RECLAMATION AND RESURFACING  
 DOUBLE PLAN**  
 SCALE: 1"=50' SHEET 3 OF 11 SHEETS STA. 170+75.00 TO STA. 201+25.00

F.A.S. RTE.	SECTION	COUNTY	TOTAL SHEETS	SHEET NO.
598	18-00101-00-PP	PIKE	29	14
CONTRACT NO. 93798				
ILLINOIS JOB NO. C-96-079-21				



MODEL: \MODELS\MAMES  
 FILE: \MAMES\_072007 - CT 2 Reconstruction (Pike)\CADD\CADD\_Sheets\15-4990-CH-DoublePlan04.dgn

Since 1945  
**Hutchison Engineering, Inc.**  
 JACKSONVILLE • PEORIA • SHOREWOOD  
 CARBONDALE • MOLINE  
 Illinois Professional Design Firm No. 184-000825  
 2022 JOB# 4900

USER NAME = CBurke	DESIGNED - CMB	REVISED -
DRAWN - CJB	REVISED -	
PLOT SCALE = 100,0000' / In.	CHECKED - BMB	REVISED -
PLOT DATE = 9/14/2022	DATE - 07/2022	REVISED -

**STATE OF ILLINOIS**  
**DEPARTMENT OF TRANSPORTATION**

**CH 2 (GRIGGSVILLE ROAD) RECLAMATION AND RESURFACING**  
**DOUBLE PLAN**  
 SCALE: 1"=50' SHEET 4 OF 11 SHEETS STA. 201+25.00 TO STA. 231+75

F.A.S. RTE.	SECTION	COUNTY	TOTAL SHEETS	SHEET NO.
598	18-00101-00-PP	PIKE	29	15
CONTRACT NO. 93798				
ILLINOIS JOB NO. C-96-079-21				

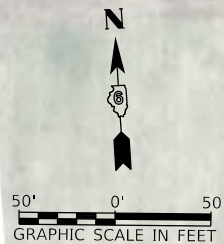
PROP. CURVE PRCH23  
 PI STA. = 227+64.37  
 $\Delta = 7^\circ 17' 13''$  (LT)  
 $D = 0^\circ 51' 05''$   
 $R = 6,730.00'$   
 $T = 428.54'$   
 $L = 855.92'$   
 $E = 13.63'$   
 $e = RC$   
 $T.R. = 33'$   
 $S.E. RUN = 33'$   
 $P.C. STA. = 223+35.84$   
 $P.T. STA. = 231+91.76$   
 $SE ATTAINED = 227+15.00$   
 $SE REMOVED = 227+81.00$

Q SURVEY AND CONSTRUCTION  
 COUNTY HIGHWAY 2 (GRIGGSVILLE RD)

MATCH LINE - STA 231+75.00

MATCH LINE - STA 247+00.00

PROP. CURVE PRCH24  
 PI STA. = 235+15.98  
 $\Delta = 5^\circ 30' 59''$  (RT)  
 $D = 0^\circ 51' 05''$   
 $R = 6,730.00'$   
 $T = 324.23'$   
 $L = 647.95'$   
 $E = 7.81'$   
 $e = RC$   
 $T.R. = 33'$   
 $S.E. RUN = 33'$   
 $P.C. STA. = 231+91.76$   
 $P.T. STA. = 238+39.71$   
 $SE ATTAINED = 234+65.00$   
 $SE RETURNED = 235+31.00$



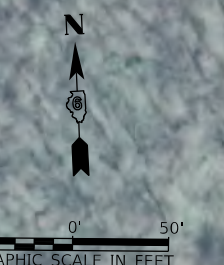
N 29th St  
 +67.44

S 30th St  
 +86.12

MATCH LINE - STA 247+00.00

MATCH LINE - STA 262+25.00

Q SURVEY AND CONSTRUCTION  
 COUNTY HIGHWAY 2 (GRIGGSVILLE RD)



MODEL: H:\MODELS\MJMS\18-00101-00-PP-2 Reconstruction (P)\CADD\CADD\_Sheets\18-00101-00-PP-2.dgn  
 FILE NAME: 18-00101-00-PP-2.dgn

Since 1945  
**Hutchison Engineering, Inc.**  
 JACKSONVILLE • PEORIA • SHOREWOOD  
 CARBONDALE • MOBILE  
 Illinois Professional Design Firm No. 184-000825  
 2022 JOB# 4900

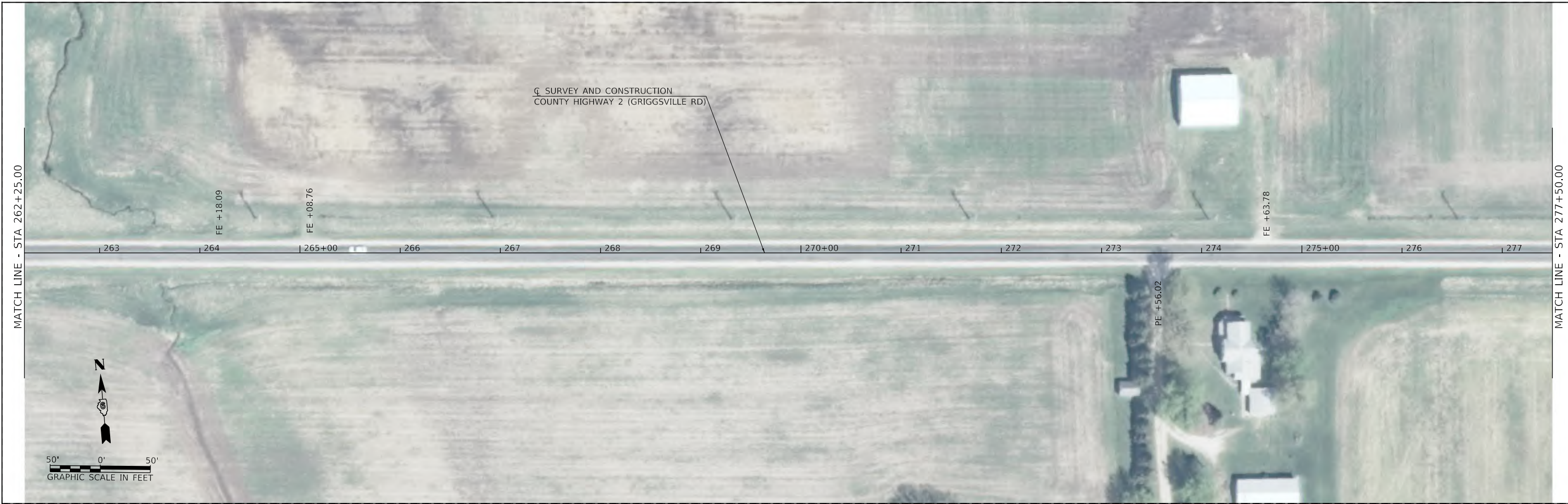
USER NAME = CBurke	DESIGNED - CMB	REVISED -
	DRAWN - CJB	REVISED -
PLOT SCALE = 100,0000' / In.	CHECKED - BMB	REVISED -
PLOT DATE = 9/14/2022	DATE - 07/2022	REVISED -

**STATE OF ILLINOIS  
 DEPARTMENT OF TRANSPORTATION**

**CH 2 (GRIGGSVILLE ROAD) RECLAMATION AND RESURFACING  
 DOUBLE PLAN**  
 SCALE: 1"=50' SHEET 5 OF 11 SHEETS STA. 231+75.00 TO STA. 262+25.00

F.A.S. RTE.	SECTION	COUNTY	TOTAL SHEETS	SHEET NO.
598	18-00101-00-PP	PIKE	29	16
CONTRACT NO. 93798				
ILLINOIS JOB NO. C-96-079-21				





PROP. CURVE PRCH25  
 PI STA. = 292+04.57  
 $\Delta$  = 1° 17' 14" (LT)  
 D = 0° 12' 34"  
 R = 27,360.00'  
 T = 307.37'  
 L = 614.72'  
 E = 1.73'  
 e = NC  
 T.R. = N/A  
 S.E. RUN = N/A  
 P.C. STA. = 288+97.20  
 P.T. STA. = 295+11.92

MODEL: H:\MODELS\MAMES  
 FILE: MAMES\_V2202 - CT 2 Reconstruction (Rico)\CADD\CADD\_Sheets\17-4900-sh-50-RPlan06.dwg  
 2022

Since 1945  
**Hutchison Engineering, Inc.**  
 JACKSONVILLE • PEORIA • SHOREWOOD  
 CARBONDALE • MOLINE  
 Illinois Professional Design Firm No. 184-000825  
 JOB # 4900

USER NAME =	CBurke	DESIGNED -	CMB	REVISED -	
DRAWN -	CJB	REVISIED -			
PLOT SCALE =	100.0000' / In.	CHECKED -	BMB	REVISED -	
PLOT DATE =	9/14/2022	DATE -	07/2022	REVISED -	

**STATE OF ILLINOIS**  
**DEPARTMENT OF TRANSPORTATION**

**CH 2 (GRIGGSVILLE ROAD) RECLAMATION AND RESURFACING**  
**DOUBLE PLAN**  
 SCALE: 1"=50'    SHEET 6 OF 11 SHEETS    STA. 262+25.00 TO STA. 292+75

F.A.S. RTE.	SECTION	COUNTY	TOTAL SHEETS	SHEET NO.
598	18-00101-00-PP	PIKE	29	17
CONTRACT NO. 93798			ILLINOIS JOB NO. C-96-079-21	

PROP. CURVE PRCH25  
 PI STA. = 292+04.57  
 $\Delta = 1^\circ 17' 14''$  (LT)  
 $D = 0^\circ 12' 34''$   
 $R = 27,360.00'$   
 $T = 307.37'$   
 $L = 614.72'$   
 $E = 1.73'$   
 $e = NC$   
 T.R. = N/A  
 S.E. RUN = N/A  
 P.C. STA. = 288+97.20  
 P.T. STA. = 295+11.92

CL SURVEY AND CONSTRUCTION  
 COUNTY HIGHWAY 2 (GRIGGSVILLE RD)

MATCH LINE - STA 292+75.00

PT Sta 295+11.92

FE +93.10

293 294 295+00 296 297 298 299 300+00 301 302 303 304 305+00 306 307



50' 0' 50'  
 GRAPHIC SCALE IN FEET

MATCH LINE - STA 308+00.00

MATCH LINE - STA 308+00.00

CL SURVEY AND CONSTRUCTION  
 COUNTY HIGHWAY 2 (GRIGGSVILLE RD)

405th St  
 +20.97

FE +58.79

FE +18.54

308 309 310+00 311 312 313 314 315+00 316 317 318 319 320+00 321 322 323



50' 0' 50'  
 GRAPHIC SCALE IN FEET

MATCH LINE - STA 323+25.00

MODEL: 4100BELMAMES  
 FILE NAME: C:\2021 - C-2 Reconstruction (Pike)\CADD\CADD Sheets\18-4900-sht-50-Rplan07.dgn

Since 1945  
**Hutchison Engineering, Inc.**  
 JACKSONVILLE • PEORIA • SHOREWOOD  
 CARBONDALE • MOLINE  
 Illinois Professional Design Firm No. 184-000825

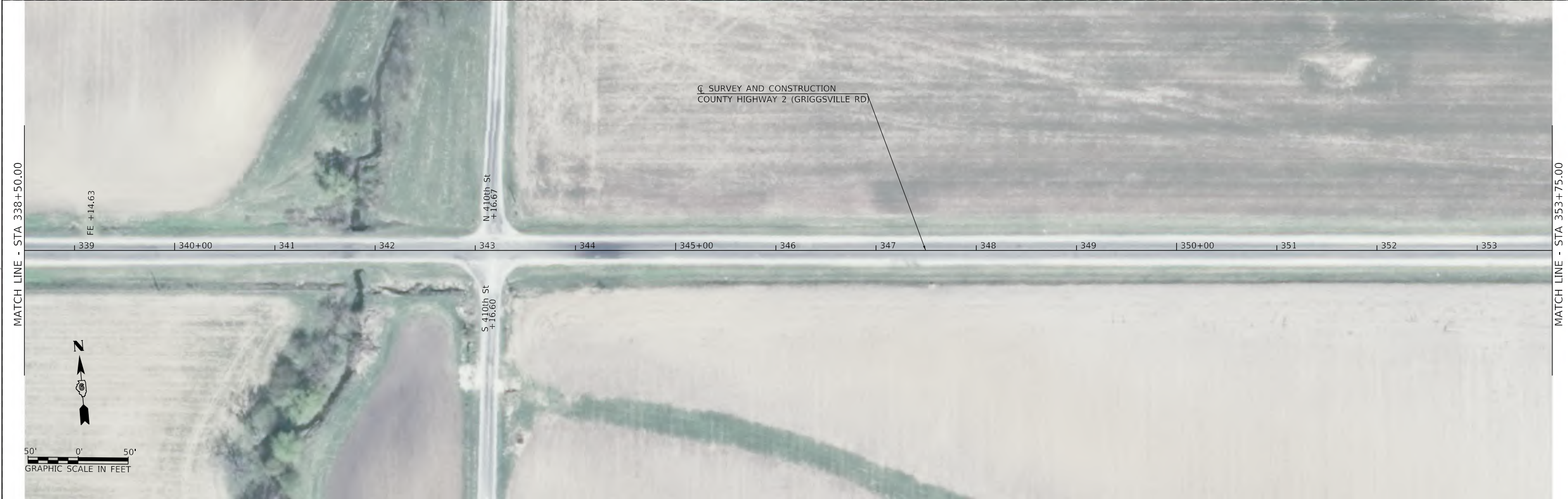
USER NAME = CBurke	DESIGNED - CMB	REVISED -
	DRAWN - CJB	REVISED -
PLOT SCALE = 100,0000' / In.	CHECKED - BMB	REVISED -
PLOT DATE = 9/14/2022	DATE - 07/2022	REVISED -

**STATE OF ILLINOIS  
 DEPARTMENT OF TRANSPORTATION**

**CH 2 (GRIGGSVILLE ROAD) RECLAMATION AND RESURFACING  
 DOUBLE PLAN**

SCALE: 1"=50' SHEET 7 OF 11 SHEETS STA. 292+75.00 TO STA. 323+25.00

F.A.S. RTE.	SECTION	COUNTY	TOTAL SHEETS	SHEET NO.
598	18-00101-00-PP	PIKE	29	18
CONTRACT NO. 93798				
ILLINOIS JOB NO. C-96-079-21				



MODEL: \\MODELS\MAMES  
 FILE: \\MAILER: 04/2007 - CT 2 Reconstruction (Pike)\CADD\CADD\_Sheets\19-4900-01-50-RPm08.dgn  
 2022

Since 1945  
**Hutchison Engineering, Inc.**  
 JACKSONVILLE • PEORIA • SHOREWOOD  
 CARBONDALE • MOULINE  
 Illinois Professional Design Firm No. 184-000825  
 JOB # 4900

USER NAME = CBurke	DESIGNED - CMB	REVISED -
	DRAWN - CJB	REVISED -
PLOT SCALE = 100.0000' / In.	CHECKED - BMB	REVISED -
PLOT DATE = 9/14/2022	DATE - 07/2022	REVISED -

**STATE OF ILLINOIS**  
**DEPARTMENT OF TRANSPORTATION**

**CH 2 (GRIGGSVILLE ROAD) RECLAMATION AND RESURFACING**  
**DOUBLE PLAN**

SCALE: 1"=50'    SHEET 8    OF 11 SHEETS    STA. 323+25.00    TO STA. 353+75.00

F.A.S. RTE.	SECTION	COUNTY	TOTAL SHEETS	SHEET NO.
598	18-00101-00-PP	PIKE	29	19
CONTRACT NO. 93798				
ILLINOIS JOB NO. C-96-079-21				



MODEL: \\MODELS\MAMES  
 FILE: \\FILES: 03-2007 - CT 2 Reconstruction (Pike)\CADD\CADD\_Sheets\370-4900-sh-50-RPm09.dgn  
 2022

Since 1945  
**Hutchison Engineering, Inc.**  
 JACKSONVILLE • PEORIA • SHREVEWOOD  
 CARBONDALE • MOLINE  
 Illinois Professional Design Firm No. 184-000825  
 JOB # 4900

USER NAME =	CBurke	DESIGNED -	CMB	REVISED -	
DRAWN -	CJB	REVISIED -			
PLOT SCALE =	100,0000 ' / In.	CHECKED -	BMB	REVISED -	
PLOT DATE =	9/14/2022	DATE -	07/2022	REVISED -	

**STATE OF ILLINOIS**  
**DEPARTMENT OF TRANSPORTATION**

**CH 2 (GRIGGSVILLE ROAD) RECLAMATION AND RESURFACING**  
**DOUBLE PLAN**  
 SCALE: 1"=50'    SHEET 9 OF 11 SHEETS    STA. 353+75.00 TO STA. 384+25.00

F.A.S. RTE.	SECTION	COUNTY	TOTAL SHEETS	SHEET NO.
598	18-00101-00-PP	PIKE	29	20
CONTRACT NO. 93798				
ILLINOIS JOB NO. C-96-079-21				



NOTE: CROSS SLOPE AND/OR PROFILE OF CH 2 ADJACENT TO THE COMMERCIAL ENTRANCE AT 409+17.21 RT SHALL BE MODIFIED TO ALLOW THE EDGE OF THE PROPOSED PAVEMENT TO MATCH THE ELEVATION OF THE EXISTING CONCRETE ENTRANCE.

MODEL: 1400BELMAMES  
 FILE NAME: V:\2001 - CT 2 Reconstruction (Pike)\CADD\CADD\_Sheets\3144900-ct2-50-RPlan10.dgn  
 Since 1945  
**Hutchison Engineering, Inc.**  
 JACKSONVILLE • PEORIA • SHOREWOOD  
 CARBONDALE • MOLINE  
 Illinois Professional Design Firm No. 184-000825  
 2022 JOB# 4900

USER NAME = CBurke	DESIGNED - CMB	REVISED -
	DRAWN - CJB	REVISED -
PLOT SCALE = 100,0000' / In.	CHECKED - BMB	REVISED -
PLOT DATE = 9/14/2022	DATE - 07/2022	REVISED -

**STATE OF ILLINOIS  
DEPARTMENT OF TRANSPORTATION**

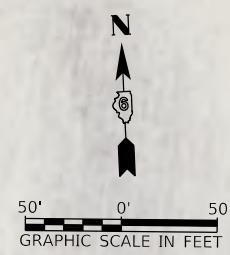
<b>CH 2 (GRIGGSVILLE ROAD) RECLAMATION AND RESURFACING</b>			
<b>DOUBLE PLAN</b>			
SCALE: 1"=50'	SHEET 10	OF 11 SHEETS	STA. 384+25.00 TO STA. 414+75.00

F.A.S. RTE.	SECTION	COUNTY	TOTAL SHEETS	SHEET NO.
598	18-00101-00-PP	PIKE	29	21
CONTRACT NO. 93798			ILLINOIS JOB NO. C-96-079-21	

PROP. CURVE PRCH26  
 PI STA. = 409+55.77  
 $\Delta = 3^\circ 48' 41''$  (LT)  
 $D = 0^\circ 12' 39''$   
 $R = 27,170.00'$   
 $T = 904.00'$   
 $L = 1,807.33'$   
 $E = 15.03'$   
 $e = NC$   
 $T.R. = N/A$   
 $S.E. RUN = N/A$   
 $P.C. STA. = 400+51.77$   
 $P.T. STA. = 418+59.10$

MATCH LINE - STA 414+75.00  
 FE +77.25

415+00 | 416 | 417 | 418 | 419 | 420+00 | 421 | 422 | 423 | 424 | 425+00 | 426 | 427



Q SURVEY AND CONSTRUCTION  
 COUNTY HIGHWAY 2 (GRIGGSVILLE RD)

N Oak St  
 +75.76

S Oak St  
 +73.71

POT Sta 427+92.60

SECTION 18-00101-00-PP  
 ENDS  
 STA 427+47.06

MODEL: 110026134115  
 FILE NAME: 18-00101-00-PP - CH 2 Reconstruction (Pike)\CADD\CADD\_Sheets\32-4900-CH-2-PP\Plan11.dgn

Since 1945  
**Hutchison Engineering, Inc.**  
 JACKSONVILLE • PEORIA • SHOREWOOD  
 CARBONDALE • MOLINE  
 Illinois Professional Design Firm No. 184-000825

USER NAME = CBurke	DESIGNED - CMB	REVISED -
DRAWN - CJB	REVISED -	
PLOT SCALE = 100,0000' / in.	CHECKED - BMB	REVISED -
PLOT DATE = 9/14/2022	DATE - 07/2022	REVISED -

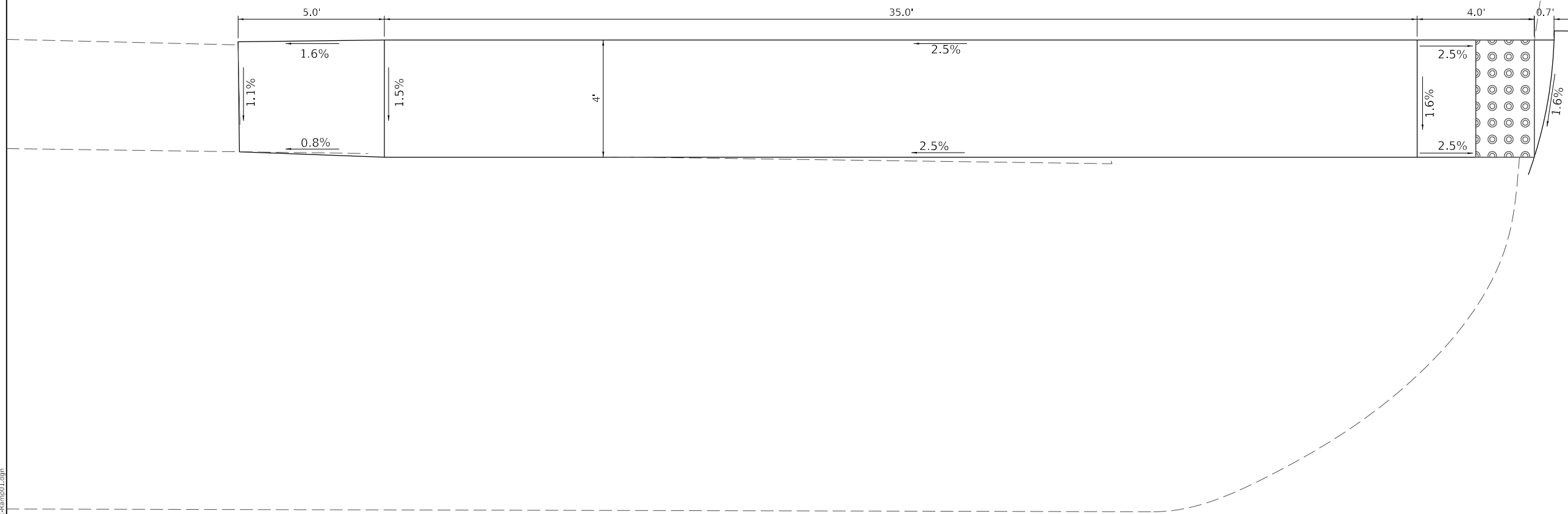
**STATE OF ILLINOIS  
 DEPARTMENT OF TRANSPORTATION**

**CH 2 (GRIGGSVILLE ROAD) RECLAMATION AND RESURFACING  
 DOUBLE PLAN**  
 SCALE: 1"=50' SHEET 11 OF 11 SHEETS STA. 414+75.00 TO STA. 427+47.06

F.A.S. RTE.	SECTION	COUNTY	TOTAL SHEETS	SHEET NO.
598	18-00101-00-PP	PIKE	29	22
CONTRACT NO. 93798				
ILLINOIS JOB NO. C-96-079-21				

**GRIGGSVILLE ROAD / BROWN STREET INTERSECTION  
NORTHWEST QUADRANT**

HIGHWAY STD. 424001 - PERPENDICULAR CURB RAMP FOR SIDEWALKS



2' 0' 2'  
GRAPHIC SCALE IN FEET

MODEL Default  
FILE Name: V:\2000 - CH 2 Reconstruction (Pike)\CADD\CADD\_Sheets\32-4900-CH-Ramp01.dwg

**Hutchison Engineering, Inc.**  
Since 1945  
JACKSONVILLE • PEORIA • SHOREWOOD  
CARBONDALE • MOLINE  
Illinois Professional Design Firm No. 184-000825  
2022 JOB# 4900

USER NAME = CBurke	DESIGNED - JTH	REVISED -
	DRAWN - JTH	REVISED -
PLOT SCALE = 4,000' / In.	CHECKED - CMB	REVISED -
PLOT DATE = 9/14/2022	DATE - 07/2022	REVISED -

**STATE OF ILLINOIS  
DEPARTMENT OF TRANSPORTATION**

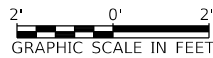
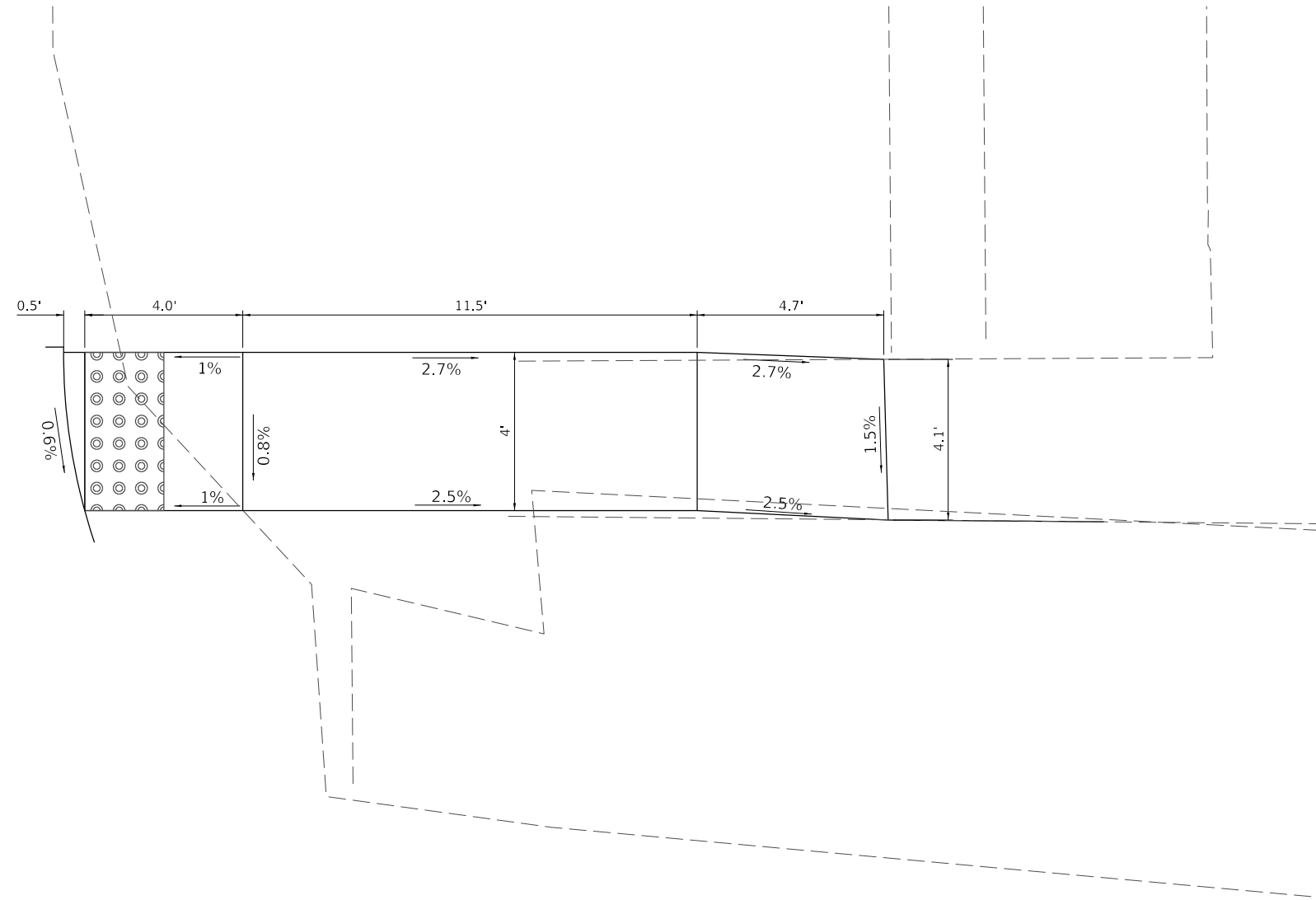
**CH 2 (GRIGGSVILLE ROAD) RECLAMATION AND RESURFACING  
SIDEWALK RAMP DETAILS**

SCALE: 1"=2' SHEET 1 OF 4 SHEETS

F.A.S. RTE.	SECTION	COUNTY	TOTAL SHEETS	SHEET NO.
598	18-00101-00-PP	PIKE	29	23
CONTRACT NO. 93798			ILLINOIS JOB NO. C-96-079-21	

**GRIGGSVILLE ROAD / BROWN STREET INTERSECTION  
NORTHEAST SIDEWALK**

HIGHWAY STD. 424001 - PERPENDICULAR CURB RAMP FOR SIDEWALKS



MODEL Default - CH 2 Reconstruction (Pike) CADD\CADD\_Sheets\34-4900-01-5-Ramp02.dwg

**Hutchison Engineering, Inc.**  
 Since 1945  
 JACKSONVILLE • PEORIA • SHOREWOOD  
 CARBONDALE • MOULNE  
 Illinois Professional Design Firm No. 184-000825  
 2022 JOB# 4900

USER NAME = CBurke	DESIGNED - JTH	REVISED -
	DRAWN - JTH	REVISED -
PLOT SCALE = 4,000' / In.	CHECKED - CMB	REVISED -
PLOT DATE = 9/14/2022	DATE - 07/2022	REVISED -

**STATE OF ILLINOIS  
DEPARTMENT OF TRANSPORTATION**

**CH 2 (GRIGGSVILLE ROAD) RECLAMATION AND RESURFACING  
SIDEWALK RAMP DETAILS**

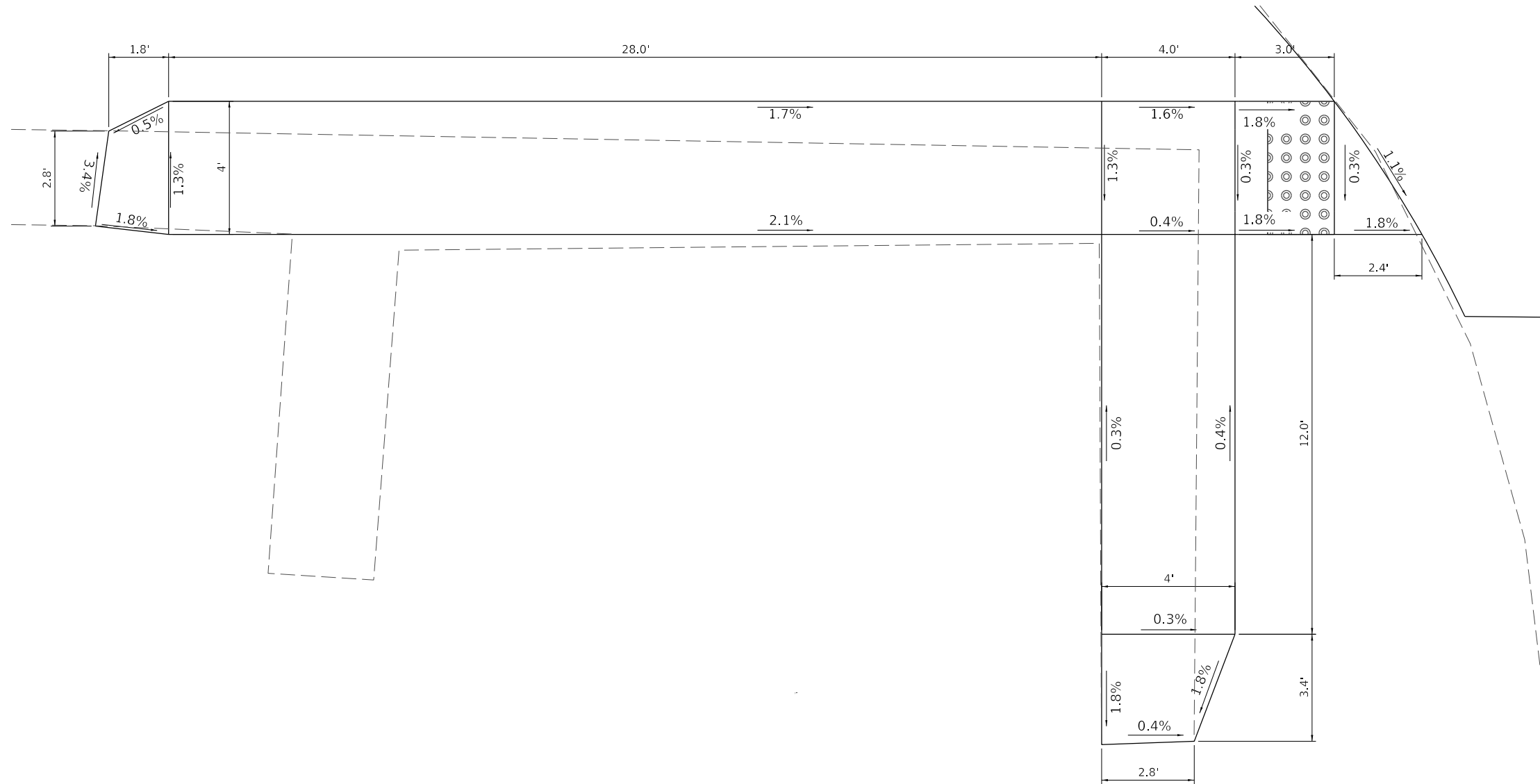
SCALE: 1"=2' SHEET 1 OF 4 SHEETS

F.A.S. RTE.	SECTION	COUNTY	TOTAL SHEETS	SHEET NO.
598	18-00101-00-PP	PIKE	29	24
CONTRACT NO. 93798			ILLINOIS JOB NO. C-96-079-21	



**GRIGGSVILLE ROAD / BENNETT STREET INTERSECTION  
SOUTHWEST SIDEWALK**

HIGHWAY STD. 424001 - PERPENDICULAR CURB RAMPS FOR SIDEWALKS



MODEL Default  
FILE Name: 18-0009 - CH 2 Reconstruction (Pike) CADD\CADD\_Sheets\18-0009-CH-2-Sidewalk-Ramp\03.dwg  
2022

Since 1945  
**Hutchison Engineering, Inc.**  
JACKSONVILLE • PEORIA • SHOREWOOD  
CARBONDALE • MOULINE  
Illinois Professional Design Firm No. 184-000825

USER NAME = CBurke	DESIGNED - JTH	REVISED -
	DRAWN - JTH	REVISED -
PLOT SCALE = 4,000' / 1"	CHECKED - CMB	REVISED -
PLOT DATE = 9/14/2022	DATE - 07/2022	REVISED -

**STATE OF ILLINOIS  
DEPARTMENT OF TRANSPORTATION**

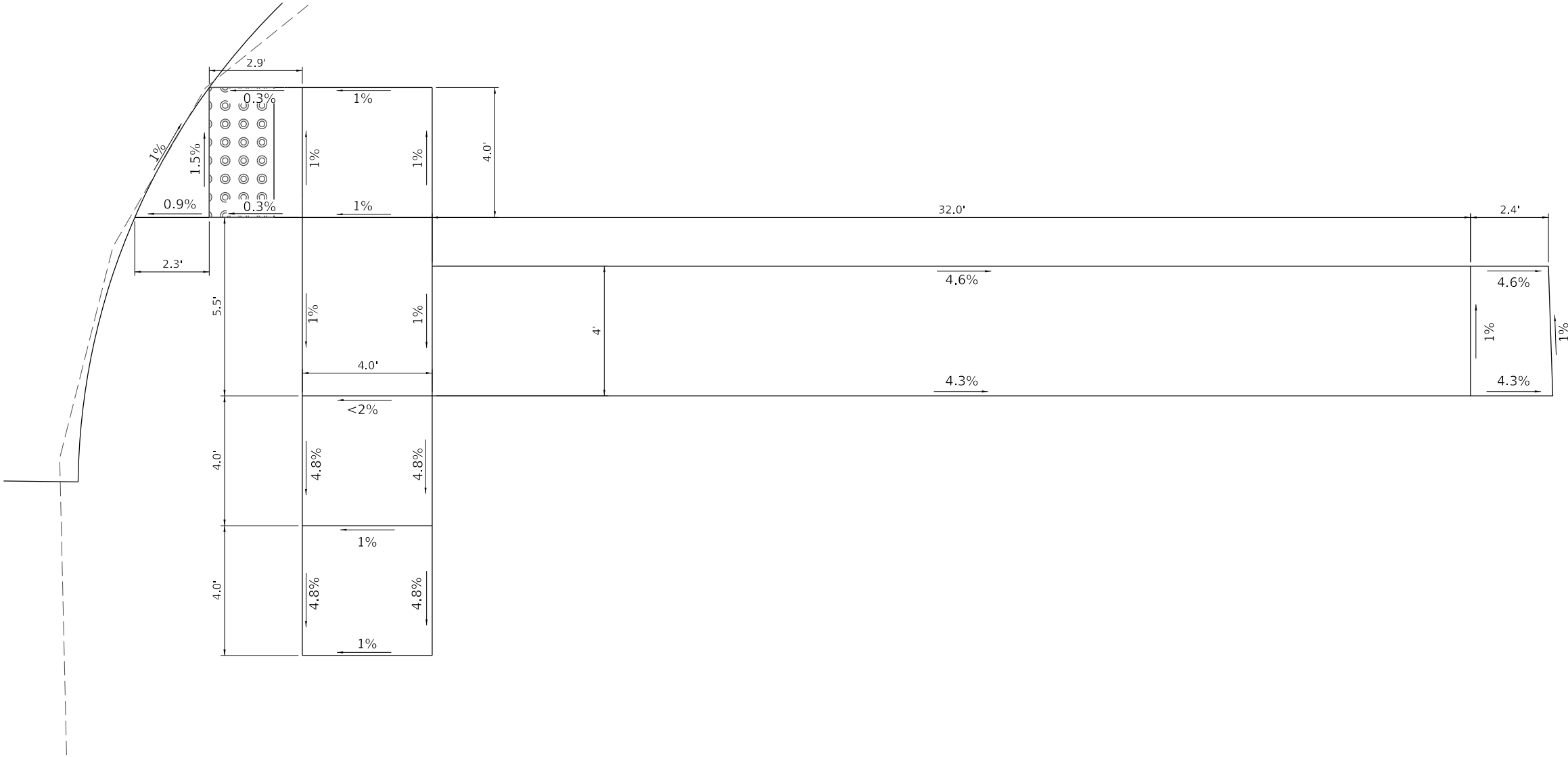
**CH 2 (GRIGGSVILLE ROAD) RECLAMATION AND RESURFACING  
SIDEWALK RAMP DETAILS**

SCALE: 1"=2' SHEET 3 OF 4 SHEETS


F.A.S. RTE.	SECTION	COUNTY	TOTAL SHEETS	SHEET NO.
598	18-00101-00-PP	PIKE	29	25
CONTRACT NO. 93798				
ILLINOIS JOB NO. C-96-079-21				

**GRIGGSVILLE ROAD / BENNETT STREET INTERSECTION  
SOUTHEAST SIDEWALK**

HIGHWAY STD. 424001 - PERPENDICULAR CURB RAMPS FOR SIDEWALKS



MODEL Default  
FILE Name: V:\2009 - CH 2 Reconstruction (Pike)\CADD\CADD\_Sheets\36-4900-Sub-Ramp04.dgn  
2022

  
 Since 1945  
**Hutchison Engineering, Inc.**  
 JACKSONVILLE • PEORIA • SHOREWOOD  
 CARBONDALE • MOULNE  
 Illinois Professional Design Firm No. 184-000825  
 2022      JOB # 4900

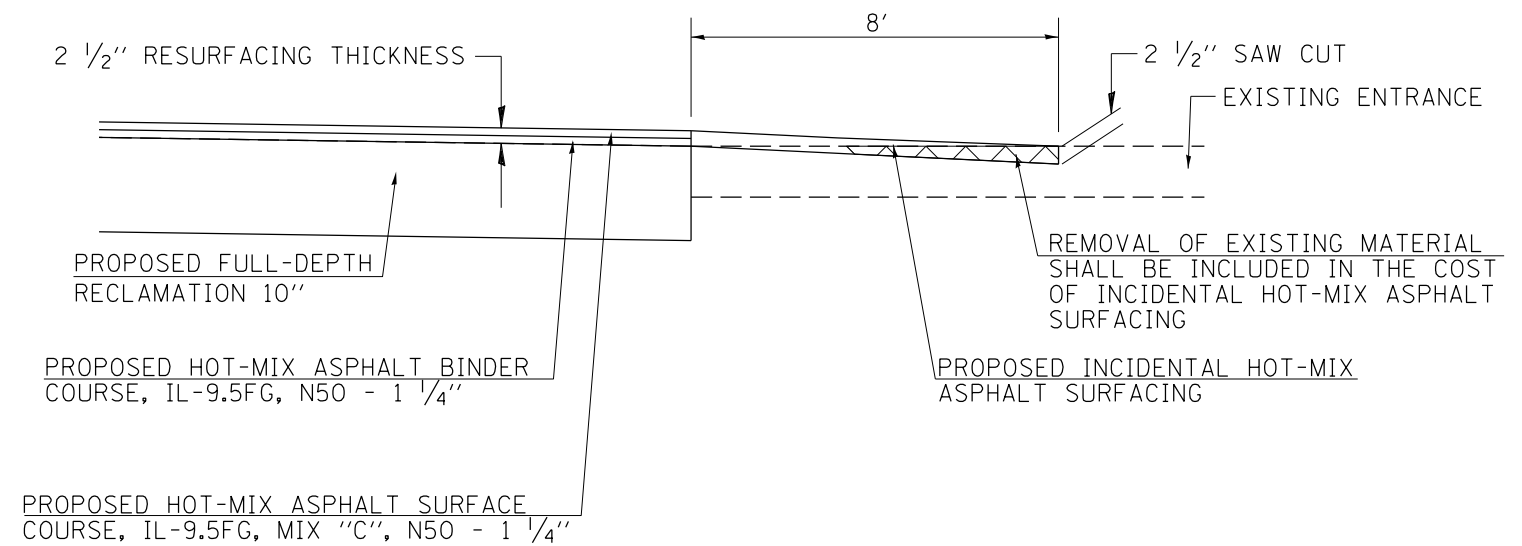
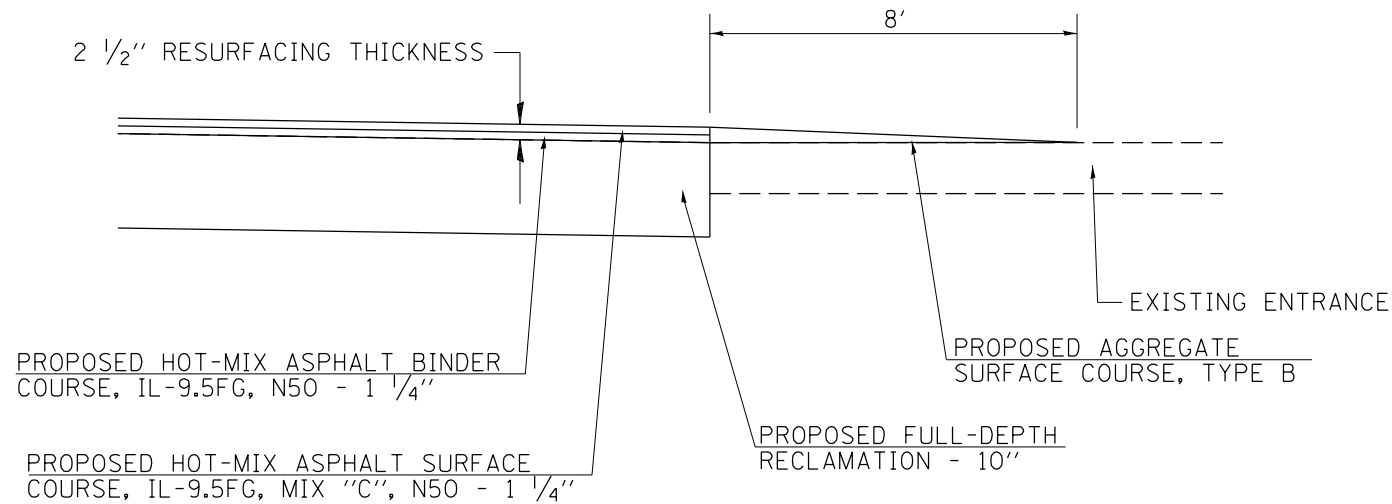
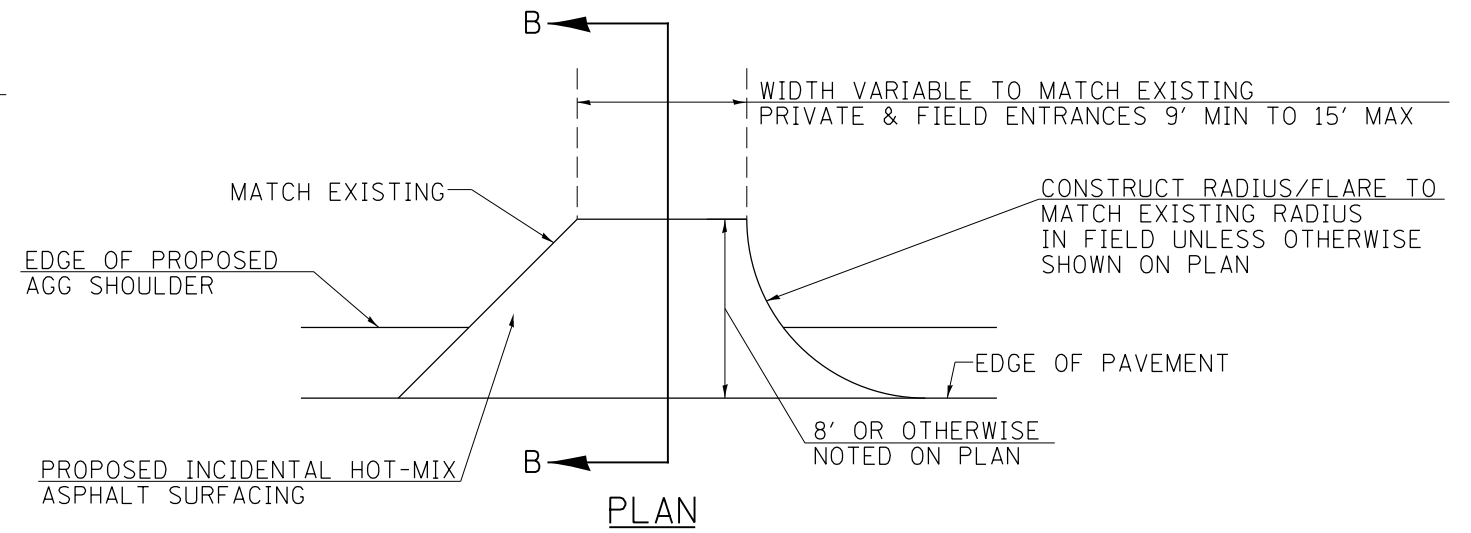
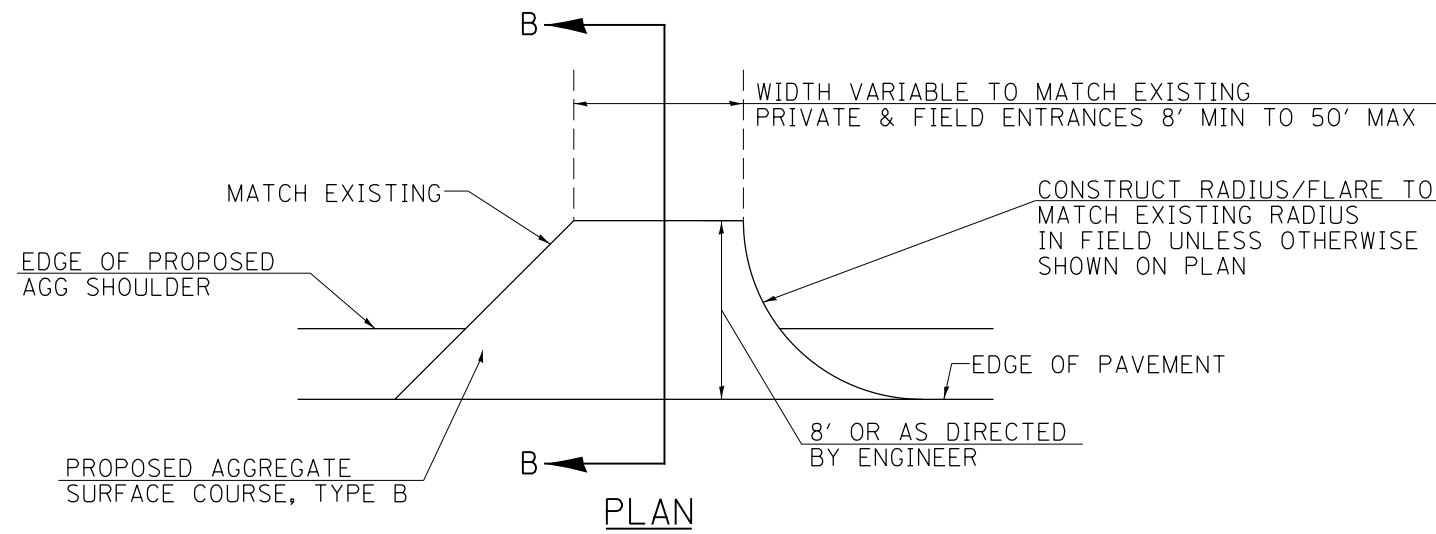
USER NAME = CBurke	DESIGNED - JTH	REVISED -
	DRAWN - JTH	REVISED -
PLOT SCALE = 4,000' / In.	CHECKED - CMB	REVISED -
PLOT DATE = 9/14/2022	DATE - 07/2022	REVISED -

**STATE OF ILLINOIS  
DEPARTMENT OF TRANSPORTATION**

**CH 2 (GRIGGSVILLE ROAD) RECLAMATION AND RESURFACING  
SIDEWALK RAMP DETAILS**

SCALE: 1"=2'      SHEET 4 OF 4 SHEETS

F.A.S. RTE.	SECTION	COUNTY	TOTAL SHEETS	SHEET NO.
598	18-00101-00-PP	PIKE	29	26
CONTRACT NO. 93798				
ILLINOIS JOB NO. C-96-079-21				



SECTION B-B

SECTION B-B

AGGREGATE ENTRANCE TAPERS

HOT MIX-ASPHALT ENTRANCE TAPERS

MODEL: 1100BELMAME  
 FILE: 18-00101-00-PP - CT 2 Reconstruction (P) (R) (C) (A) (D) (D) - Sheets 17-4990-sh-58-01.dgn  
 2022

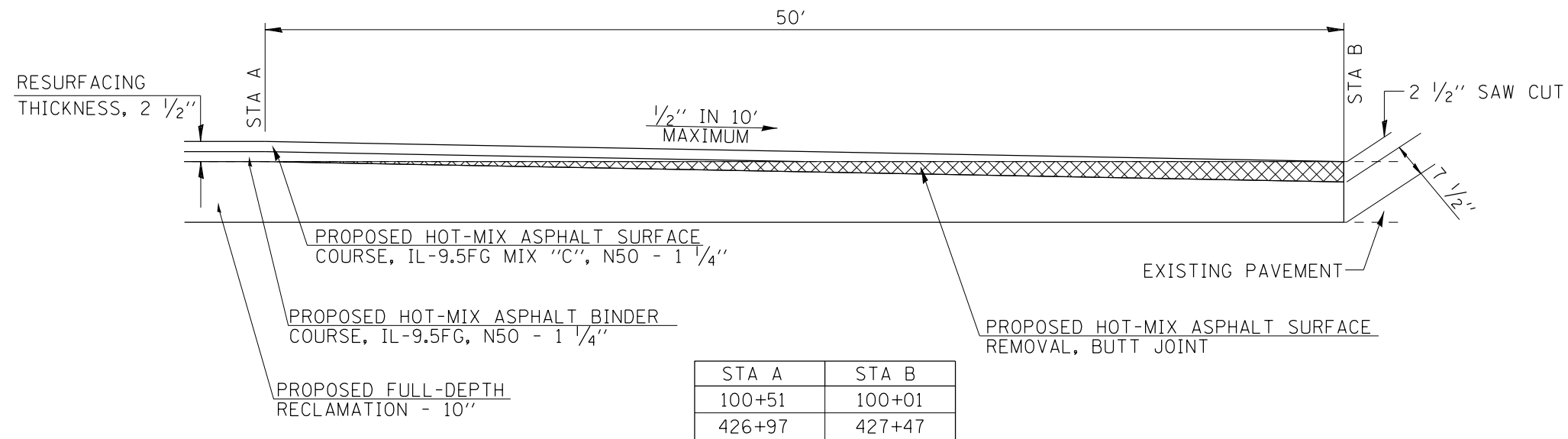
<b>Hutchison Engineering, Inc.</b> <small>Since 1945</small> JACKSONVILLE • PEORIA • SHOREWOOD CARBONDALE • MOULNE Illinois Professional Design Firm No. 184-000825	USER NAME = C Burke	DESIGNED - CMB	REVISED -
	PLOT SCALE = 10,0000' / In.	DRAWN - CJB	REVISED -
	PLOT DATE = 9/14/2022	CHECKED - BMB	REVISED -
	JOB# 4900	DATE - 07/2022	REVISED -

STATE OF ILLINOIS  
DEPARTMENT OF TRANSPORTATION

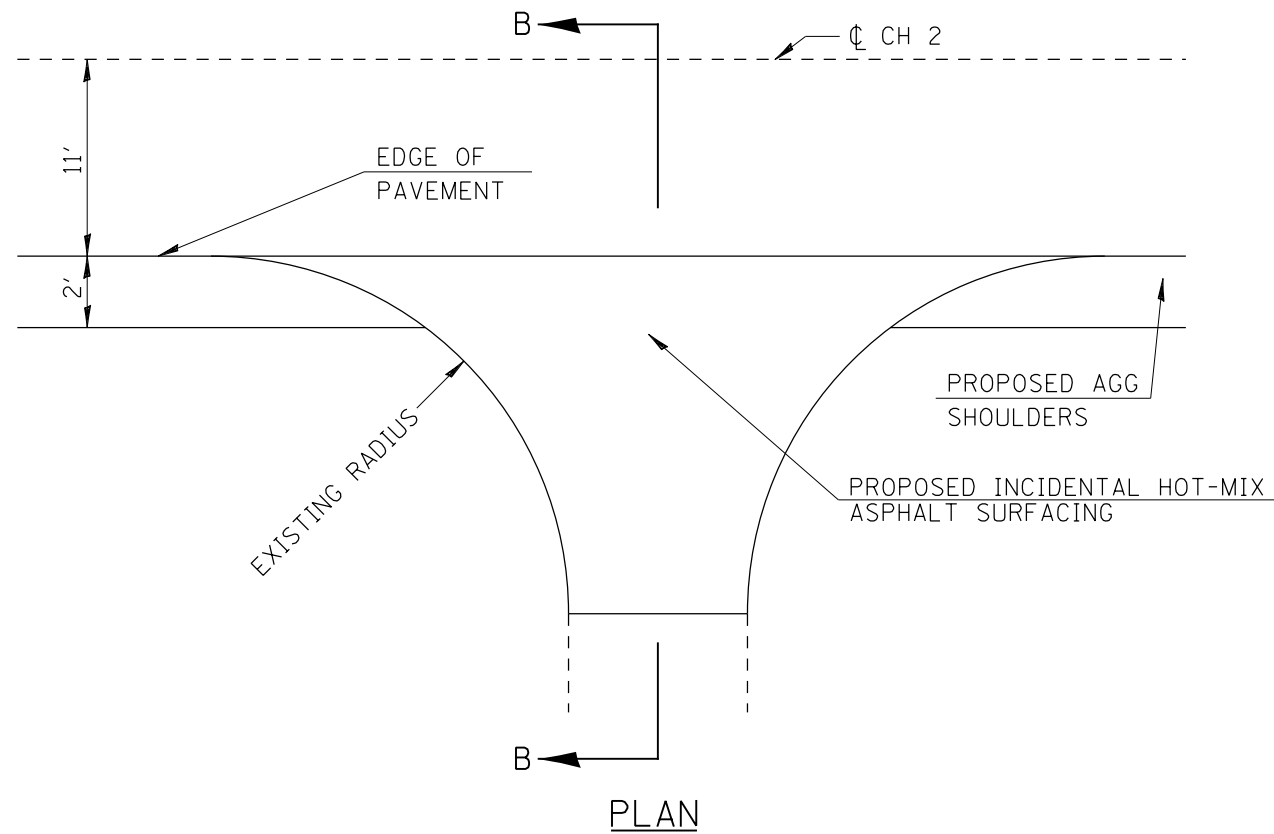
CH 2 (GRIGGSVILLE ROAD) RECLAMATION AND RESURFACING  
SPECIAL DETAILS

SCALE: N/A SHEET 1 OF 2 SHEETS

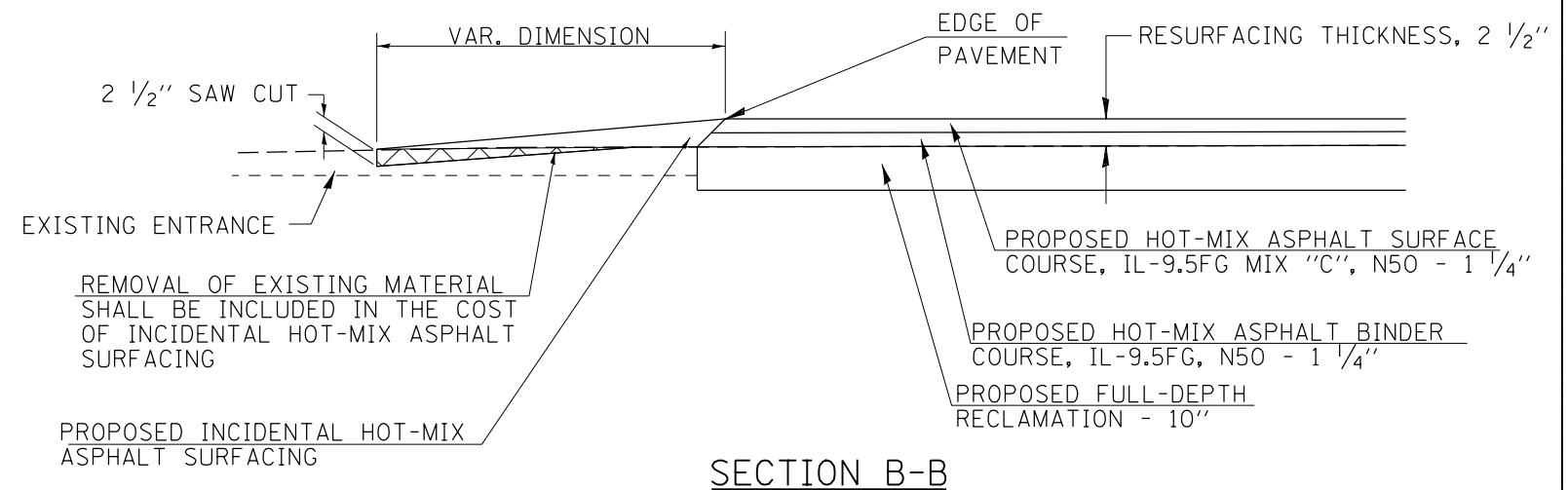
F.A.S. RTE.	SECTION	COUNTY	TOTAL SHEETS	SHEET NO.
598	18-00101-00-PP	PIKE	29	27
CONTRACT NO. 93798			ILLINOIS JOB NO. C-96-079-21	



**BUTT JOINT DETAILS**  
ENDS OF PROJECT



**SIDEROAD DETAIL**



MODEL: H:\MODELS\MJMS - CT 2 Reconstruction (Pike)\CADD\CADD\_Sheets\318-4900-sh-5b-Detail02.dwg  
FILE NAME: 18-00101-00-PP - CT 2 Reconstruction (Pike)\CADD\CADD\_Sheets\318-4900-sh-5b-Detail02.dwg

USER NAME = CBurke	DESIGNED - CMB	REVISED -
PLOT SCALE = 10,0000' / In.	DRAWN - CJB	REVISED -
PLOT DATE = 9/14/2022	CHECKED - BMB	REVISED -
	DATE - 07/2022	REVISED -

F.A.S. RTE.	SECTION	COUNTY	TOTAL SHEETS	SHEET NO.
598	18-00101-00-PP	PIKE	29	28
CONTRACT NO. 93798				
ILLINOIS JOB NO. C-96-079-21				

**DETOUR SIGNING NOTES**

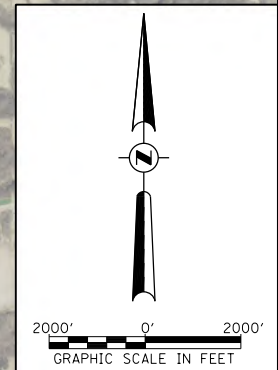
- ① CH 2 AND CH 3 INTERSECTION:  
EAST: (1)  
NORTH: (3) AND (4) AT INTERSECTION; (2) 500' IN ADVANCE  
WEST: (3) AND (6) AT INTERSECTION; (2) 500' IN ADVANCE
- ② CH 3 AND I-72 INTERCHANGE:  
CH 3 → I-72 EAST: (3) AND (5) AT EASTBOUND ENTRANCE RAMP  
I-72 WEST → CH 3: (3) AND (7) AT EXIT SIGN;  
(3) AND (8) AT ADVANCE GUIDE SIGN  
(3) AND (6) AT END OF EXIT RAMP
- ③ I-72 AND IL 107 INTERCHANGE:  
I-72 EAST → IL 107: (3) AND (7) AT EXIT SIGN;  
(3) AND (8) AT ADVANCE GUIDE SIGN  
(3) AND (5) AT END OF EXIT RAMP  
IL 107 → I-72 WEST: (3) AND (6) AT WESTBOUND ENTRANCE RAMP
- ④ CH 2 AND IL 107 INTERSECTION:  
WEST: (1)  
NORTH: (6) AND (4) AT INTERSECTION; (2) AT SOUTH LEG OF WALL ST AND LIBERTY ST, FACING NORTH  
EAST: (6) AND (5) AT INTERSECTION; (2) AT WEST LEG OF QUINCY ST AND STATE ST, FACING EAST

①		R11-3a(O)
②		W20-2 36" x 36"
③		M1-1100 30" x 24" 45" x 36" (I-72)
④		M4-9 30" x 24"
⑤		M4-9L 30" x 24"
⑥		M4-9R 30" x 24"
⑦		M4-9 30" x 24" 48" x 36" (I-72)
⑧		M4-8 30" x 15" (I-72)



**LEGEND**

- CLOSURE LOCATION
- DIRECTION OF DETOUR TRAFFIC



MODEL: 1100BELMAMES  
FILE: 1100BELMAMES\_V2022.ctb  
PROJECT: CH 2 Reconstruction (R11) (CADD) (CADD) Sheets: 139-4900-CH-2-001.dgn

**Hutchison Engineering, Inc.**  
Since 1945  
JACKSONVILLE • PEORIA • SHOREWOOD  
CARBONDALE • MOULDER  
Illinois Professional Design Firm No. 184-000825

USER NAME = CBurke	DESIGNED - CMB	REVISED -
PLOT SCALE = 4000,0000 ' / In.	DRAWN - JCW	REVISED -
PLOT DATE = 9/14/2022	CHECKED - BMB	REVISED -
	DATE - 07/2022	REVISED -

**STATE OF ILLINOIS  
DEPARTMENT OF TRANSPORTATION**

**CH 2 (GRIGGSVILLE ROAD) RECLAMATION AND RESURFACING  
DETOUR PLAN**

SCALE: 1"=2000' SHEET 1 OF 1 SHEETS

F.A.S. RTE.	SECTION	COUNTY	TOTAL SHEETS	SHEET NO.
598	18-00101-00-PP	PIKE	29	29
CONTRACT NO. 93798				
ILLINOIS JOB NO. C-96-079-21				