

STATE OF ILLINOIS  
DEPARTMENT OF TRANSPORTATION

F.A.I. RTE.	SECTION	COUNTY	TOTAL SHEETS	SHEET NO.
57	FAI 57 22 BP	COOK	24	1
		ILLINOIS	CONTRACT NO. 62U15	

FOR INDEX OF SHEETS, SEE SHEET NO. 2

**TRAFFIC DATA**

**STRUCTURE NO. 016-0052  
I-57 SB OVER I-80 EB**

I-57:  
2021 ADT = 110,300  
SPEED LIMIT = 55 MPH

I-80:  
2021 ADT = 106,500  
SPEED LIMIT = 55 MPH

**STRUCTURE NO. 016-0053  
I-57 NB OVER I-80 EB**

I-57:  
2021 ADT = 110,300  
SPEED LIMIT = 55 MPH

I-80:  
2021 ADT = 106,500  
SPEED LIMIT = 55 MPH

**STRUCTURE NO. 016-2026  
I-57 NB OVER I-80 WB**

I-57:  
2021 ADT = 110,300  
SPEED LIMIT = 55 MPH

I-80:  
2021 ADT = 106,500  
SPEED LIMIT = 55 MPH

**STRUCTURE NO. 016-2027  
I-57 SB OVER I-80 WB**

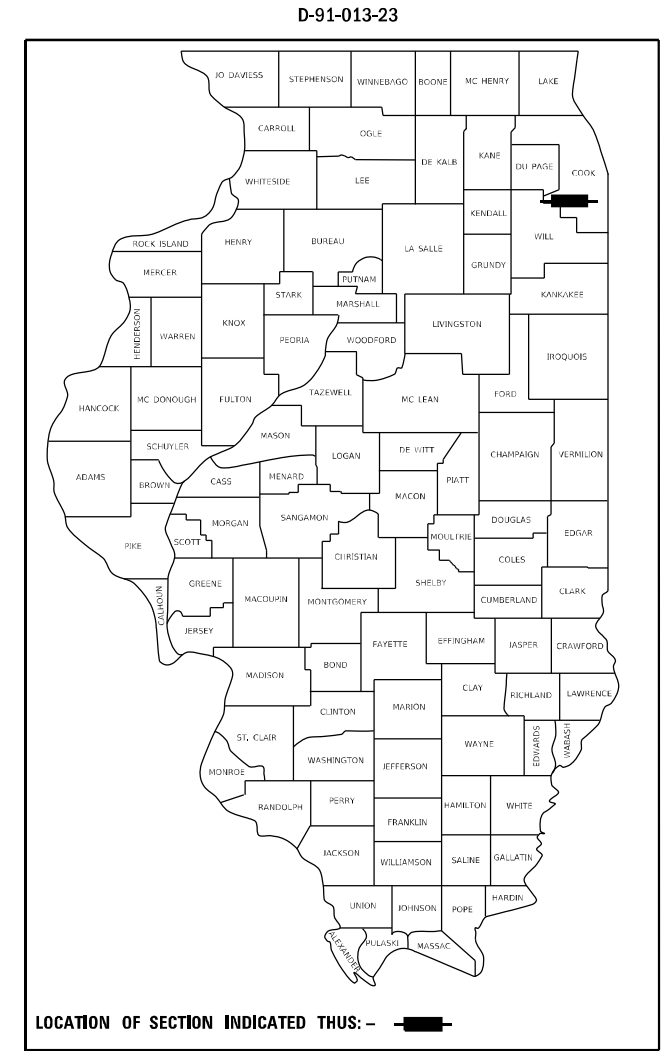
I-57:  
2021 ADT = 110,300  
SPEED LIMIT = 55 MPH

I-80:  
2021 ADT = 106,500  
SPEED LIMIT = 55 MPH

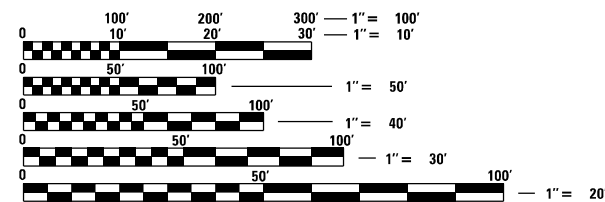
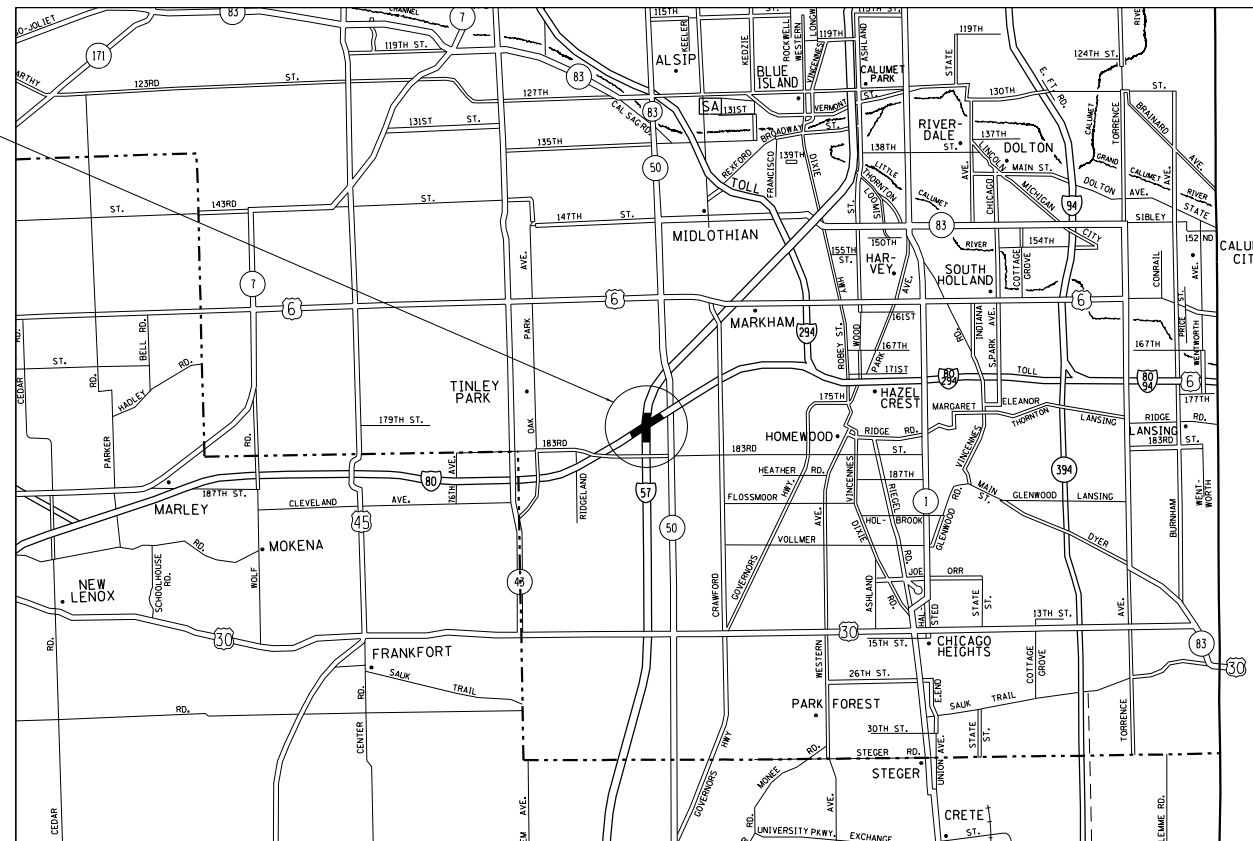
**PROPOSED  
HIGHWAY PLANS**

**FAI ROUTE 57: I-57  
AT I-80 INTERCHANGE  
SECTION FAI 57 22 BP  
BRIDGE PAINTING  
COOK COUNTY**

C-91-019-23



IMPROVEMENT LOCATION:  
I-57 AT I-80 INTERCHANGE  
STRUCTURE NO.:  
016-0052  
016-0053  
016-2026  
016-2027  
CITY OF COUNTRY CLUB HILLS



FULL SIZE PLANS HAVE BEEN PREPARED USING STANDARD ENGINEERING SCALES, REDUCED SIZED PLANS WILL NOT CONFORM TO STANDARD SCALES. IN MAKING MEASUREMENTS ON REDUCED PLANS, THE ABOVE SCALES MAY BE USED.

J.U.L.I.E.  
JOINT UTILITY LOCATION INFORMATION FOR EXCAVATORS  
1-800-892-0123  
OR 811

PROJECT ENGINEER: RODRIGO LEDEZMA (847) 705-4580  
PROJECT MANAGER: J. ALAIN MIDY (847) 221-3056

CONTRACT NO. 62U15

STATE OF ILLINOIS  
DEPARTMENT OF TRANSPORTATION

SUBMITTED October 13 20 22  
Jose Luis Lopez  
REGIONAL ENGINEER

December 9, 2022  
Steph M. Smith  
ENGINEER OF DESIGN AND ENVIRONMENT

December 9, 2022  
Steph M. Smith  
DIRECTOR OF HIGHWAYS PROJECT IMPLEMENTATION

PRINTED BY THE AUTHORITY  
OF THE STATE OF ILLINOIS

## INDEX OF SHEETS

1	COVER SHEET
2	INDEX OF SHEETS, STATE STANDARDS AND GENERAL NOTES
3	SUMMARY OF QUANTITIES
4-8	EXISTING BRIDGE PLANS (SN 016-0052)
9-12	EXISTING BRIDGE PLANS (SN 016-0053)
13-17	EXISTING BRIDGE PLANS (SN 016-2026)
18-21	EXISTING BRIDGE PLANS (SN 016-2027)
22	ENTRANCE AND EXIT RAMP CLOSURE DETAILS (TC-08)
23	TRAFFIC CONTROL DETAILS FOR FREEWAY SINGLE & MULTI-LANE WEAVE (TC-09)
24	TRAFFIC CONTROL AND PROTECTION FOR FREEWAY SHOULDER CLOSURES AND PARTIAL RAMP CLOSURES (TC-17)

## STATE STANDARDS

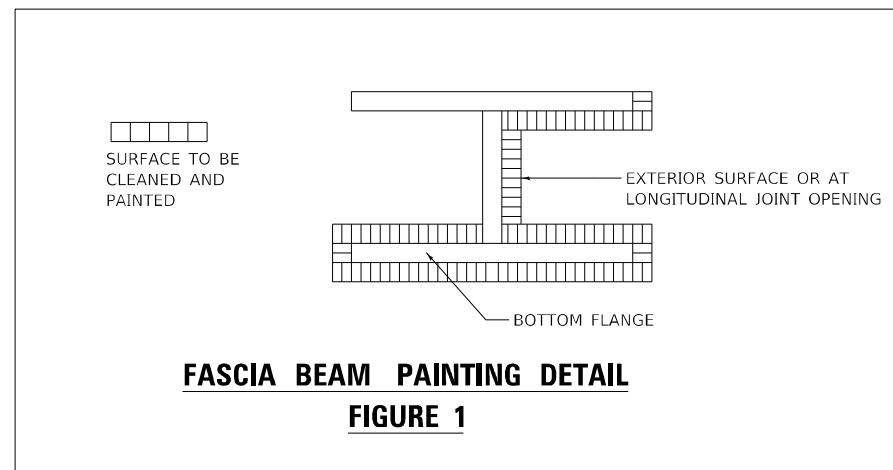
STANDARD NO.	DESCRIPTION
701101-05	OFF-RD OPERATIONS, MULTILANE, 15' (4.5 m) TO 24" (600 mm) FROM PAVEMENT EDGE
701106-02	OFF-RD OPERATIONS, MULTILANE, MORE THAN 15' (4.5 m) AWAY
701400-11	APPROACH TO LANE CLOSURE, FREEWAY/EXPRESSWAY
701401-13	LANE CLOSURE, FREEWAY/EXPRESSWAY
701406-13	LANE CLOSURE, FREEWAY/EXPRESSWAY, DAY OPERATIONS ONLY
701411-09	LANE CLOSURE, MULTILANE, AT ENTRANCE OR EXIT RAMP, FOR SPEEDS $\geq$ 45 MPH
701428-01	TRAFFIC CONTROL SETUP AND REMOVAL FREEWAY/EXPRESSWAY
701451-05	RAMP CLOSURE FREEWAY/EXPRESSWAY
701456-05	PARTIAL EXIT RAMP CLOSURE FREEWAY/EXPRESSWAY
701901-08	TRAFFIC CONTROL DEVICES

## GENERAL NOTES

- BEFORE STARTING ANY EXCAVATION, THE CONTRACTOR SHALL CALL "J.U.L.I.E." AT (800) 892-0123 OR 811 FOR FIELD LOCATIONS OF BURIED ELECTRIC, TELEPHONE AND GAS UTILITIES. 48 HOUR NOTIFICATION IS REQUIRED.
- THE CONTRACTOR SHALL COORDINATE CONSTRUCTION ACTIVITIES WITH UTILITY COMPANIES, AND THE CITY OF COUNTRY CLUB HILLS.
- PLAN DIMENSIONS AND DETAILS RELATIVE TO EXISTING PLANS ARE SUBJECT TO NOMINAL CONSTRUCTION VARIATIONS. THE CONTRACTOR SHALL FIELD VERIFY EXISTING DIMENSIONS AND DETAILS AFFECTING NEW CONSTRUCTION AND MAKE NECESSARY APPROVED ADJUSTMENTS PRIOR TO CONSTRUCTION OR ORDERING OF MATERIALS. SUCH VARIATIONS SHALL NOT BE CAUSE FOR ADDITIONAL COMPENSATION FOR A CHANGE IN SCOPE OF THE WORK, HOWEVER, THE CONTRACTOR WILL BE PAID FOR THE QUANTITY ACTUALLY FURNISHED BASED AT THE UNIT PRICE BID FOR THE WORK.
- THE CONTRACTOR WILL NOT BE ALLOWED TO SET UP A YARD OR FIELD OFFICE ON STATE PROPERTY WITHOUT WRITTEN PERMISSION FROM THE DEPARTMENT.
- THE CONTRACTOR SHALL CONTACT THE DISTRICT ONE TRAFFIC CONTROL SUPERVISOR AT KALPANA.KANNAN-HOSADURGA@ILLINOIS.GOV FOR ARTERIALS AND (847)705-4151 FOR EXPRESSWAYS A MINIMUM OF 72 HOURS IN ADVANCE OF BEGINNING WORK.
- THESE PLANS HAVE BEEN PREPARED FROM NOTES RECEIVED FROM THE BUREAU OF MAINTENANCE BRIDGE INSPECTORS.
- IT SHALL BE THE CONTRACTOR'S RESPONSIBILITY TO PROTECT AND MAINTAIN THE EXISTING BRIDGE LIGHTING AT ANY LOCATIONS THAT LIGHTING IS ENCOUNTERED ADJACENT TO AN AREA TO BE CLEANED AND PAINTED.
- THE CONTRACTOR SHALL BE REQUIRED TO PROVIDE ACCESS TO ABUTTING PROPERTY AT ALL TIMES DURING THE CONSTRUCTION OF THIS PROJECT.
- WHEN ARTIFICIAL LIGHTING IS UTILIZED IN NIGHTTIME OPERATIONS, THE CONTRACTOR SHALL EXERCISE THE UTMOST PRECAUTIONS PREVENTING ADVERSE VISIBILITY TO THE MOTORING PUBLIC AND ADJACENT RESIDENTIAL AREAS.
- THE CONTRACTOR SHALL REQUEST AND GAIN THE APPROVAL FROM THE ILLINOIS DEPARTMENT OF TRANSPORTATION'S EXPRESSWAY TRAFFIC OPERATIONS ENGINEER AT WWW.IDOTLCS.COM TWENTY FOUR (24) HOURS IN ADVANCE OF ALL DAILY LANE, RAMP AND SHOULDER CLOSURES. THIS ADVANCE NOTIFICATION IS CALCULATED BASED ON WORKWEEK OF MONDAY THROUGH FRIDAY AND SHALL NOT INCLUDE WEEKENDS OR HOLIDAYS.
- THE CONTRACTOR SHALL TAKE NECESSARY PRECAUTIONS WHEN WORKING NEAR THE ABUTMENTS IF ELECTRICAL JUNCTIONS BOXES AND ATTACHED CONDUITS ARE PRESENT.
- DO NOT SCALE PLANS FOR CONSTRUCTION DIMENSIONS.

## GENERAL PAINT NOTES

- CLEANING AND PAINTING OF THE EXISTING STRUCTURAL STEEL SHALL BE AS SPECIFIED IN THE SPECIAL PROVISION FOR "CLEANING AND PAINTING EXISTING STEEL STRUCTURES".
- ALL ITEMS (SUCH AS, BUT NOT LIMITED TO: CONDUITS, BRACKETS AND DECK DRAINS) ATTACHED TO OUTSIDE OF THE FASCIA BEAMS SHOULD BE CLEANED AND PAINTED.
- FOR STRUCTURES 016-0052, 016-0053, 016-2027: ALL BEAMS, BEARINGS AND OTHER STRUCTURAL STEEL SHALL BE CLEANED PER NEAR WHITE BLAST SSPC-SP-10.
- FOR STRUCTURE 016-2026: THE EXTERIOR SURFACES AND TOP AND BOTTOM FLANGE OF THE FASCIA BEAM OUTSIDE THE DECK JOINTS FOR THE LENGTH OF THE BRIDGE (SEE FIGURE 1) SHALL BE CLEANED PER NEAR WHITE BLAST CLEANING SSPC-SP-10.  
  
ALL BEAMS, BEARINGS AND OTHER STRUCTURAL STEEL WITHIN 5FT (MEASURED ALONG THE BEAM) OF EITHER SIDE OF ALL DECK JOINTS SHALL BE CLEANED PER NEAR WHITE BLAST CLEANING SSPC-SO10.
- THESE AREAS SHALL BE PAINTED ACCORDING TO THE REQUIREMENTS OF PAINT SYSTEM 1 -OZ/E/U. THE COLOR OF THE FINAL FINISH COAT FOR ALL INTERIOR STEEL SURFACES SHALL BE GRAY, MUNSELL NO 5B 7/1. THE COLOR OF THE FINAL FINISH COAT FOR THE EXTERIOR AND BOTTOM FLANGE OF THE FASCIA BEAMS SHALL BE REDDISH BROWN, MUNSELL NO 2. 5YR 3/4.
- A MINIMUM OF 2 AIR MONITOR AT EVERY LOCATION WILL BE REQUIRED TO MONITOR ABRASIVE BLASTING OPERATIONS. SEE SPECIAL PROVISIONS FOR "CONTAINMENT AND DISPOSAL OF LEAD PAINT CLEANING RESIDUE".



MODEL: Default  
 FILE: Mainfile  
 PROJECT: \\project-new-beamfile.com\FW\DOT\Documents\DOT Office\Dir\dirct\_1\Project\101323\CADD\DATA\Design\101323-sub-egencore.dgn

USER NAME = Jacob.Roth	DESIGNED -	REVISED -
	DRAWN -	REVISED -
PLOT SCALE = 100,0000' / in.	CHECKED -	REVISED -
PLOT DATE = 11/18/2022	DATE -	REVISED -

**STATE OF ILLINOIS  
DEPARTMENT OF TRANSPORTATION**

**INDEX OF SHEETS, STATE STANDARDS  
GENERAL NOTES AND GENERAL PAINT NOTES**

SCALE: SHEET 1 OF 1 SHEETS STA. TO STA.

F.A.I. RTE.	SECTION	COUNTY	TOTAL SHEETS	SHEET NO.
57	FAI 57 22 BP	COOK	24	2
				CONTRACT NO. 62U15
		ILLINOIS	FED. AID PROJECT	

SUMMARY OF QUANTITIES			URBAN TOTAL QUANTITIES 100% STATE	CONSTRUCTION TYPE CODE				SUMMARY OF QUANTITIES			TOTAL QUANTITIES	CONSTRUCTION TYPE CODE			
CODE NO	ITEM	UNIT		0047 BRIDGE 1 SN 016-0052	0047 BRIDGE 2 SN 016-0053	0047 BRIDGE 3 SN 016-2026	0047 BRIDGE 4 SN 016-2027	CODE NO	ITEM	UNIT		CODE NO	ITEM	UNIT	
67100100	MOBILIZATION	L SUM	1	0.25	0.25	0.25	0.25								
70200100	NIGHTTIME WORK ZONE LIGHTING	L SUM	1	0.25	0.25	0.25	0.25								
X6700407	ENGINEER'S FIELD OFFICE, TYPE A (D1)	CAL MO	18	4.5	4.5	4.5	4.5								
X7011015	TRAFFIC CONTROL AND PROTECTION ( EXPRESSWAYS)	L SUM	1	0.25	0.25	0.25	0.25								
Z0007101	CONTAINMENT AND DISPOSAL OF LEAD PAINT CLEANING RESIDUES NO. 1	L SUM	1	1											
Z0007102	CONTAINMENT AND DISPOSAL OF LEAD PAINT CLEANING RESIDUES NO. 2	L SUM	1		1										
Z0007103	CONTAINMENT AND DISPOSAL OF LEAD PAINT CLEANING RESIDUES NO. 3	L SUM	1			1									
Z0007104	CONTAINMENT AND DISPOSAL OF LEAD PAINT CLEANING RESIDUES NO. 4	L SUM	1				1								
Z0010501	CLEANING AND PAINTING STEEL BRIDGE NO. 1	L SUM	1	1											
Z0010502	CLEANING AND PAINTING STEEL BRIDGE NO. 2	L SUM	1		1										
Z0010503	CLEANING AND PAINTING STEEL BRIDGE NO. 3	L SUM	1			1									
Z0010504	CLEANING AND PAINTING STEEL BRIDGE NO. 4	L SUM	1				1								
Ø Z0076604	TRAINEES - TRAINING PROGRAM GRADUATE	HOURS	500	500											

SUMMARY OF QUANTITIES			URBAN TOTAL QUANTITIES 100% STATE	CONSTRUCTION TYPE CODE				SUMMARY OF QUANTITIES			TOTAL QUANTITIES	CONSTRUCTION TYPE CODE			
CODE NO	ITEM	UNIT		0047 BRIDGE 1 SN 016-0052	0047 BRIDGE 2 SN 016-0053	0047 BRIDGE 3 SN 016-2026	0047 BRIDGE 4 SN 016-2027	CODE NO	ITEM	UNIT		CODE NO	ITEM	UNIT	

FILE NAME = pw:\N\dot-pw\benley.com\PW\DOT\Documents\DOT\_011618\District\Projects\DDI323\CAD\dot\Design\DDI323-st-50 | USER NAME = Jacob.Poth | DESIGNED - [ ] | REVISIONS: DESIGNED - [ ], CHECKED - [ ], DATE - [ ], DRAWN - [ ], REVISIONS: DRAWN - [ ], REVISÉD - [ ], REVISIONS: REVISÉD - [ ], PLOT SCALE = 100.0000' / 1" = | CHECKED - [ ] | PLOT DATE = 10/25/2022 | DATE - [ ]

**STATE OF ILLINOIS**  
**DEPARTMENT OF TRANSPORTATION**

**SUMMARY OF QUANTITIES**

SCALE: | SHEET NO. 1 OF 1 SHEETS | STA. | TO STA.

F.A.I. SECTION COUNTY TOTAL SHEETS SHEET NO.  
57 FAI 57 22 BP COOK 24 3

FED. ROAD DIST. NO. 1 | ILLINOIS | FED. AID PROJECT

Ø 0042

REV-SEP

Existing Structure: S.N. 016-0052, originally built in 1964 as a four-span continuous steel superstructure with stub abutments and three multi-column trapezoidal piers. The back to back length is 241'-6 $\frac{3}{4}$ " and the out-to-out width is 64'-2" typically but varies at bridge ends. Structure is to be repaired as detailed in these plans.

**DESIGN STRESSES**

**FIELD UNITS (EXIST. CONST.)**

f'c = 3,500 psi  
 fy = 60,000 psi  
 fy = 50,000 psi M223 Gr.50 & M222  
 fy = 36,000 psi M183

**FIELD UNITS (NEW CONST.)**

f'c = 4,000 psi (Superstructure)  
 f'c = 3,500 psi (Substructure)  
 fy = 60,000 psi (Reinforcement)

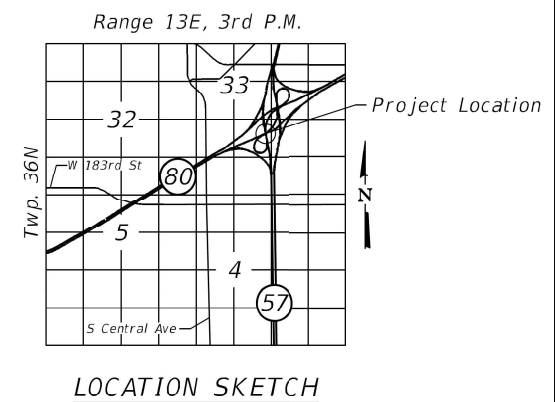
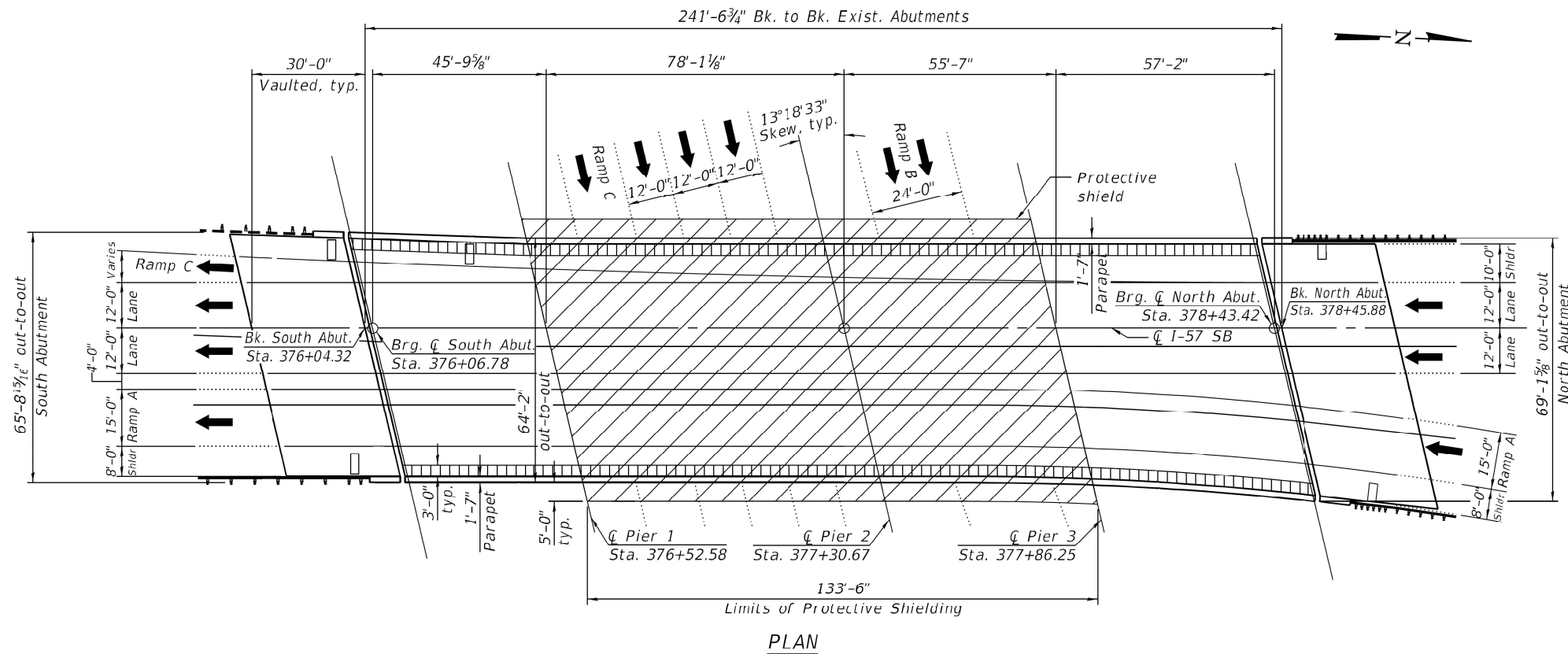
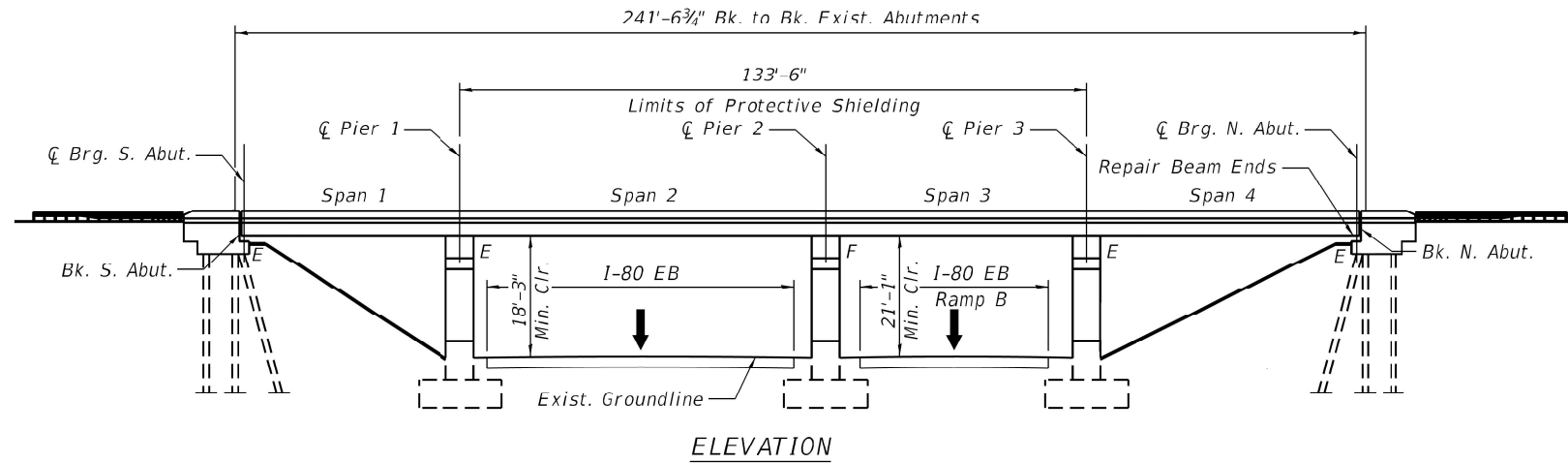
**DESIGN SPECIFICATIONS**

2002 AASHTO Standard Specifications for Highway Bridges

**LOADING HS20-44**

Existing and Proposed

# FOR INFORMATION ONLY



MODEL: Default  
 FILE: 62U15\_016-0052-01-01-01.dwg  
 PROJECT: I-57 at I-80 Interchange (SN 016-0052)  
 SHEET: 1 OF 5

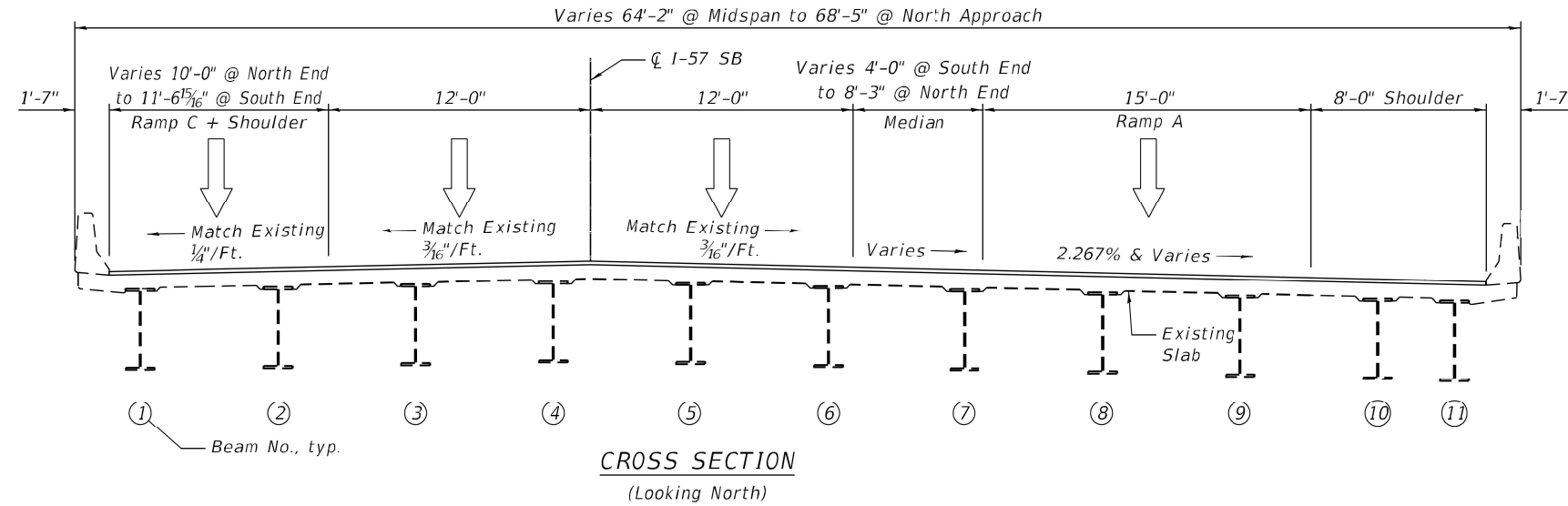
USER NAME = Jacob.Roth	DESIGNED -	REVISED -
DRAWN -	REVISED -	
PLOT SCALE = 100,0000' / in.	CHECKED -	REVISED -
PLOT DATE = 10/21/2022	DATE -	REVISED -

**STATE OF ILLINOIS  
 DEPARTMENT OF TRANSPORTATION**

<b>LOCATION 1: PLAN AND ELEVATION</b>	
<b>I-57 at I-80 INTERCHANGE (SN 016-0052)</b>	
SCALE:	SHEET 1 OF 5 SHEETS STA. TO STA.

F.A.I. RTE.	SECTION	COUNTY	TOTAL SHEETS	SHEET NO.
57	FAI 57 22 BP	COOK	24	4
CONTRACT NO. 62U15				
ILLINOIS FED. AID PROJECT				

# FOR INFORMATION ONLY



MODEL: Default  
 FILE NAME: p:\project\62u15\project\62u15\DOT\Office\Drawings\101323\CADD\data\Design\101323-Subbridge.dgn

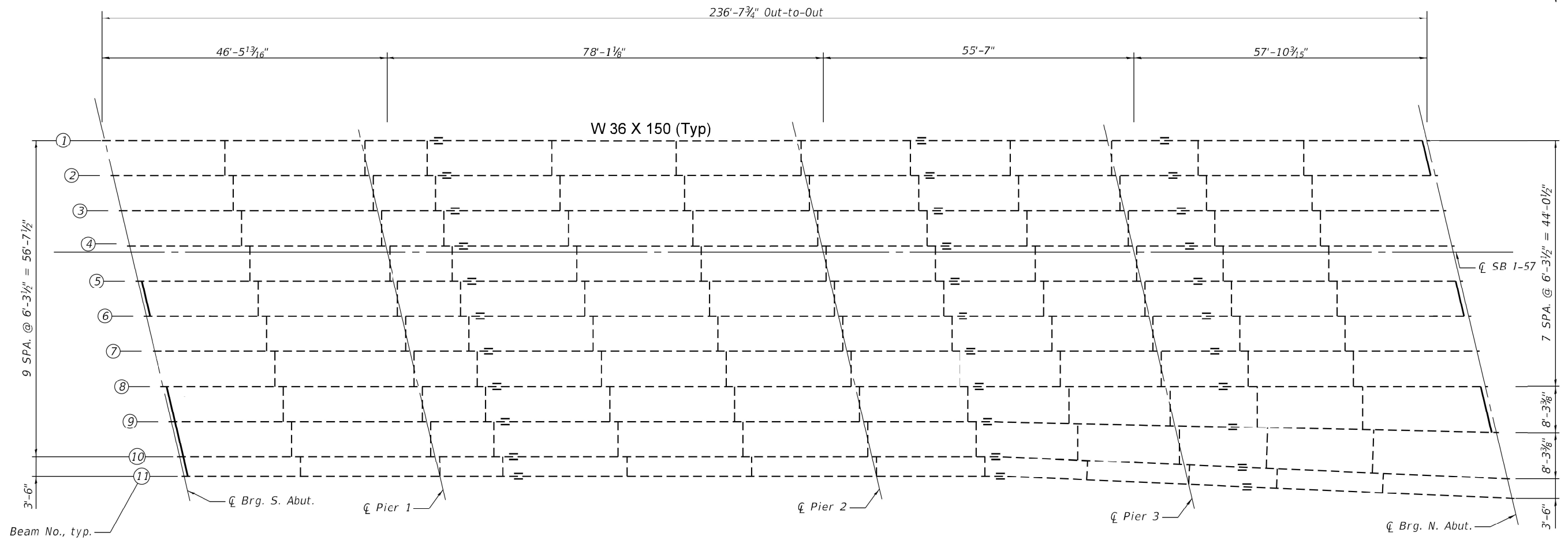
USER NAME = Jacob.Roth	DESIGNED -	REVISED -
	DRAWN -	REVISED -
PLOT SCALE = 100,0000' / in.	CHECKED -	REVISED -
PLOT DATE = 10/21/2022	DATE -	REVISED -

**STATE OF ILLINOIS**  
**DEPARTMENT OF TRANSPORTATION**

<b>LOCATION 1: CROSS SECTION</b>	
<b>I-57 AT I-80 INTERCHANGE (SN 016-0052)</b>	
SCALE:	SHEET 2 OF 5 SHEETS STA. TO STA.

F.A.I. RTE.	SECTION	COUNTY	TOTAL SHEETS	SHEET NO.
57	FAI 57 22 BP	COOK	24	5
CONTRACT NO. 62U15				
ILLINOIS FED. AID PROJECT				

# FOR INFORMATION ONLY



ALL END DIAPHRAGMS: W12 X 40 (TYP)  
 ALL INTERIOR DIAPHRAGMS: W16 X 36 (TYP)

FRAMING PLAN

MODEL: Default  
 FILE: I:\a\m\p\p\subsect-cw-bead-fy.com\P\I\DOT\Documents\DOT Office\District 1\Project\101323\CADD\data\Design\101323-subridge.dgn

USER NAME = Jacob.Roth	DESIGNED -	REVISED -
PLOT SCALE = 100,0000 ' / in.	DRAWN -	REVISED -
PLOT DATE = 10/21/2022	CHECKED -	REVISED -
	DATE -	REVISED -

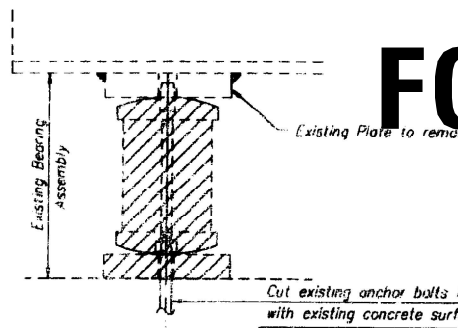
**STATE OF ILLINOIS  
 DEPARTMENT OF TRANSPORTATION**

<b>LOCATION 1: FRAMING PLAN</b>		
<b>I-57 AT I-80 INTERCHANGE (016-0052)</b>		
SCALE:	SHEET 3 OF 5 SHEETS	STA. TO STA.

F.A.I. RTE.	SECTION	COUNTY	TOTAL SHEETS	SHEET NO.
57	FAI 57 22 BP	COOK	24	6
CONTRACT NO. 62U15				
ILLINOIS FED. AID PROJECT				

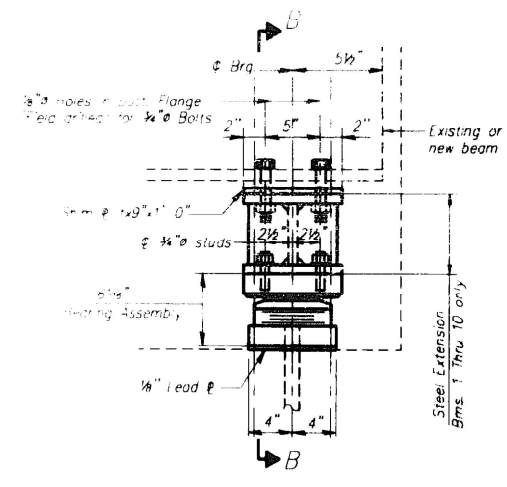
# FOR INFORMATION ONLY

STATE OF ILLINOIS  
DEPARTMENT OF TRANSPORTATION



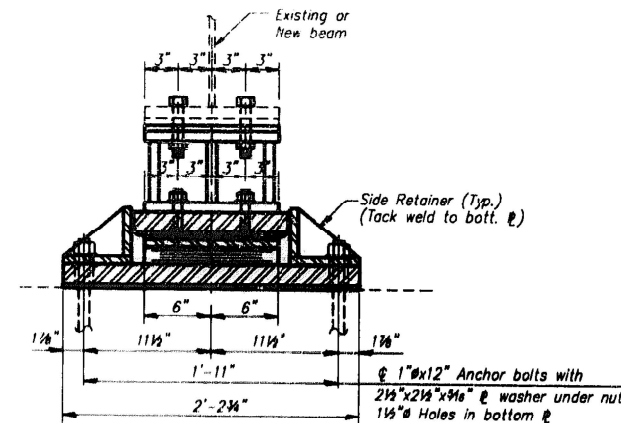
**EXISTING BEARING REMOVAL DETAIL**  
(South Abut. and North Abut.)

Cost is to be included in the unit price of the item "Jack and Remove Existing Bearings".

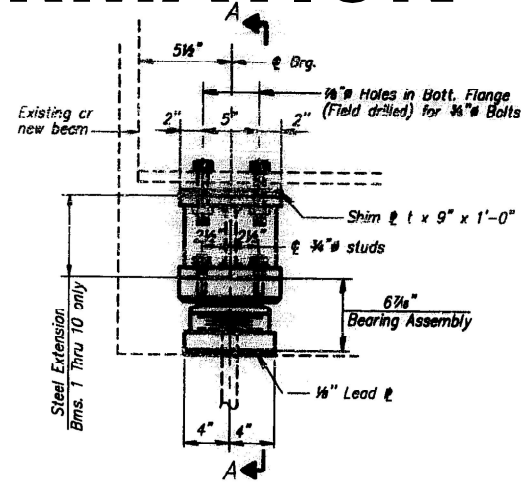


**ELEVATION AT NORTH ABUT.**

**TYPE II TFE ELASTOMERIC EXP. BRG. AT NORTH ABUTMENT**  
(11 Required)

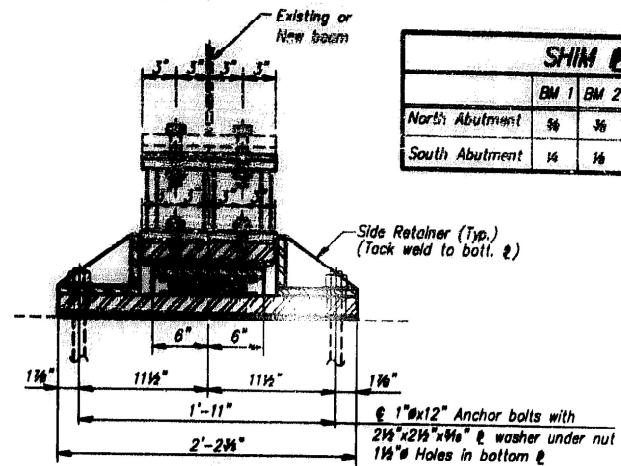


**SECTION B-B**



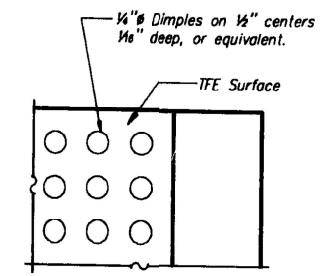
**ELEVATION AT SOUTH ABUT.**

**TYPE II TFE ELASTOMERIC EXP. BRG. AT SOUTH ABUTMENT**  
(11 Required)

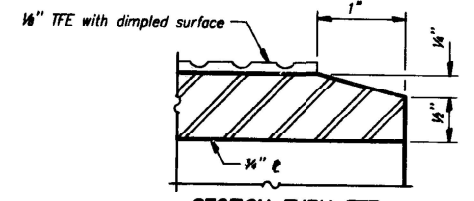


**SECTION A-A**

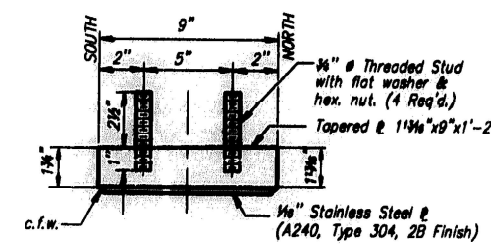
SHIM & THICKNESS "t" (in.)											
	BM 1	BM 2	BM 3	BM 4	BM 5	BM 6	BM 7	BM 8	BM 9	BM 10	BM 11
North Abutment	5/8	3/4	-	1 1/4	1 3/4	3/4	3/4	3/4	3/4	3/4	-
South Abutment	1/4	1/4	-	3/4	1	1/4	1/4	-	1/4	3/4	-



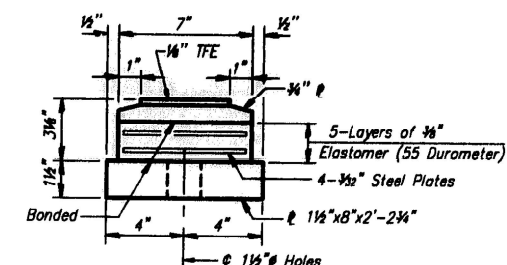
**PLAN-TFE SURFACE**



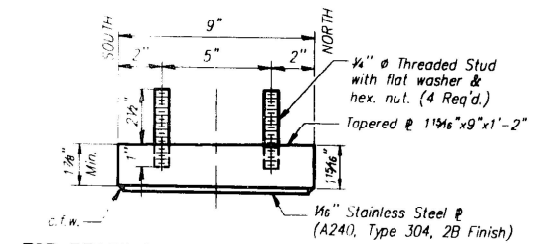
**SECTION THRU TFE**



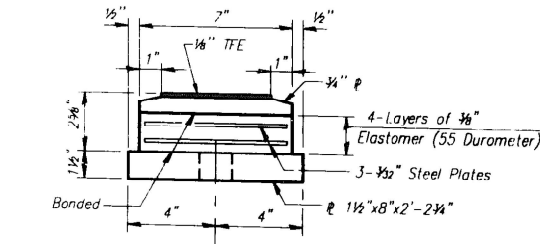
**TOP BEARING ASSEMBLY AT SOUTH ABUT.**



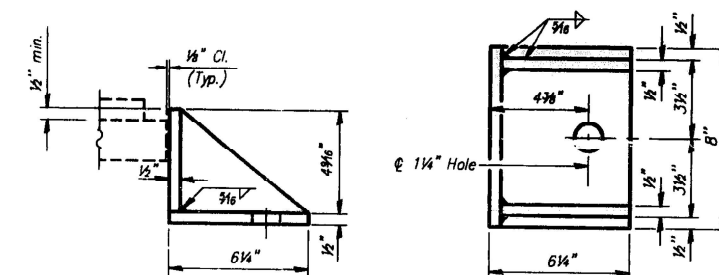
**BOTTOM BEARING ASSEMBLY AT SOUTH ABUT.**



**TOP BEARING ASSEMBLY AT NORTH ABUT.**

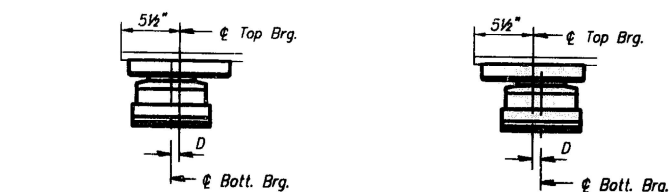


**BOTTOM BEARING ASSEMBLY AT NORTH ABUT.**



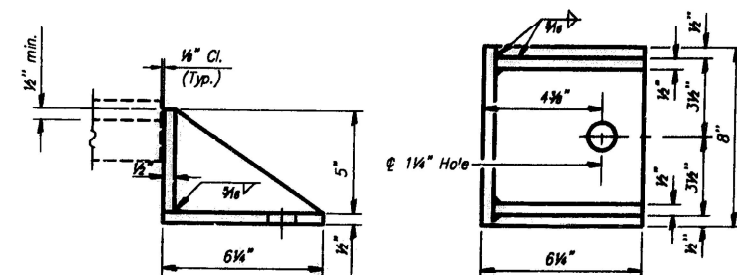
**SIDE RETAINER AT NORTH ABUT.**

Equivalent rolled angle with stiffeners will be allowed in lieu of welded plates. Weight included with Structural Steel.



**SETTING ANCHOR BOLTS AT EXP. BRG.**

D = 1/8" per each 100' of expansion for every 15° temp. change from the normal temp. of 50°F.



**SIDE RETAINER AT SOUTH ABUT.**

Equivalent rolled angle with stiffeners will be allowed in lieu of welded plates. Weight included with Structural Steel.

MODEL: Default  
FILE: 3dmodel.pdw  
PROJECT: 10112323\_CADDData\Design\10112323-subdir\pdr.dgn

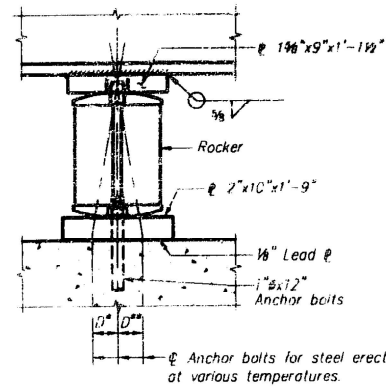
USER NAME = Jacob.Roth	DESIGNED -	REVISED -
PLOT SCALE = 100,0000' / in.	DRAWN -	REVISED -
PLOT DATE = 10/21/2022	CHECKED -	REVISED -
	DATE -	REVISED -

STATE OF ILLINOIS  
DEPARTMENT OF TRANSPORTATION

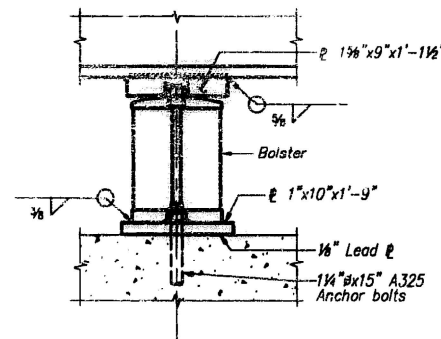
LOCATION 1: BEARING DETAILS	
I-57 AT I-80 INTERCHANGE (SN 016-0052)	
SCALE:	SHEET 4 OF 5 SHEETS STA. TO STA.

F.A.I. RTE.	SECTION	COUNTY	TOTAL SHEETS	SHEET NO.
57	FAI 57 22 BP	COOK	24	7
CONTRACT NO. 62U15				
ILLINOIS FED. AID PROJECT				

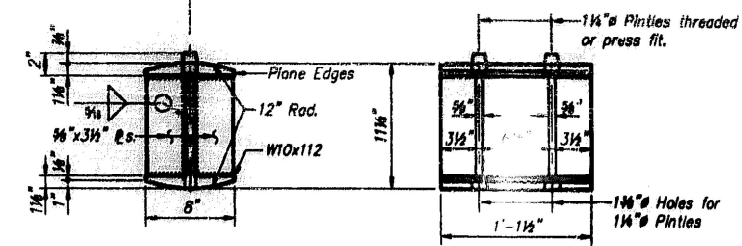
STATE OF ILLINOIS  
DEPARTMENT OF TRANSPORTATION



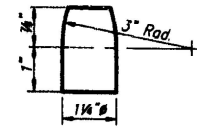
**ELEVATION AT PIERS 1 & 3**  
(BEAM 11 ONLY)



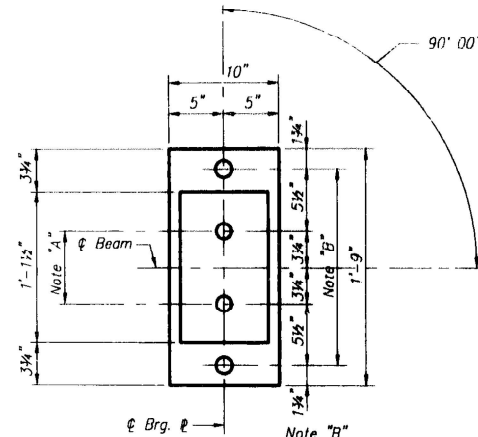
**ELEVATION AT PIER 2**  
(BEAM 11 ONLY)



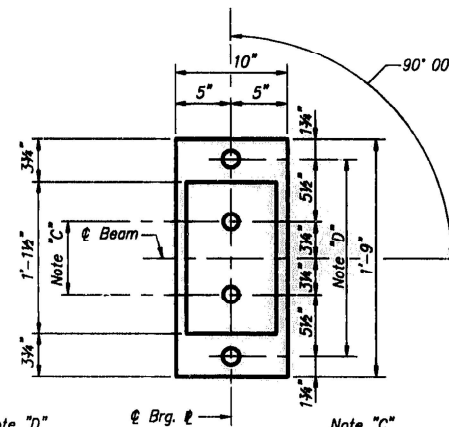
**ROCKER**



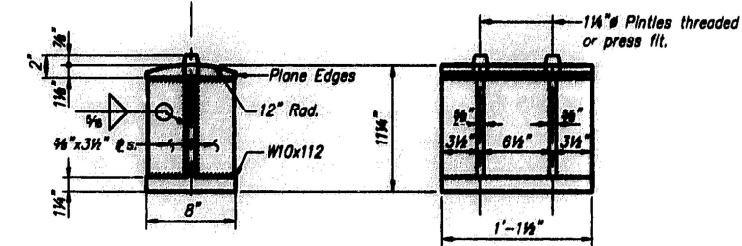
**PINTLE**



**PLAN AT PIERS 1 & 3**  
(BEAM 11 ONLY)



**PLAN AT PIER 2**  
(BEAM 11 ONLY)



**BOLSTER**

Note "A"  
1 3/8" Holes - 1" deep  
in top e for 1 1/4" Pintles.  
Thread or press fit  
Pintles in bottom e.

Note "B"  
1 1/2" Holes for 1" Anchor bolts -  
3/16" x 2 1/2" x 2 1/2" e washer under nut.

Note "D"  
1 3/4" Holes for 1 1/4" Anchor bolts -  
3/16" x 2 1/2" x 2 1/2" e washer under nut.

Note "C"  
1 3/8" Holes - 1" deep in  
top e only for 1 1/4" Pintles.

**FOR INFORMATION ONLY**

MOEEL Defaul  
FILE NAME: p:\project-aw-beam11.com\FW\DOT\Documents\DOT Office\District 11\project\101323\CADD\data\Design\101323-subridge.dgn

USER NAME = Jacob.Roth	DESIGNED -	REVISED -
	DRAWN -	REVISED -
PLOT SCALE = 100,0000' / in.	CHECKED -	REVISED -
PLOT DATE = 10/21/2022	DATE -	REVISED -

STATE OF ILLINOIS  
DEPARTMENT OF TRANSPORTATION

LOCATION 1: BEARING DETAILS  
I-57 AT I-80 INTERCHANGE (SN 016-0052)

SCALE: SHEET 5 OF 5 SHEETS STA. TO STA.

F.A.I. RTE.	SECTION	COUNTY	TOTAL SHEETS	SHEET NO.
57	FAI 57 22 BP	COOK	24	8
CONTRACT NO. 62U15				
ILLINOIS FED. AID PROJECT				



Existing Structure: S.N. 016-0053, originally built in 1964 as a three-span continuous steel superstructure with stub abutments and two multi-column trapezoidal piers. The back to back length is 204'-4 $\frac{3}{4}$ " and the out-to-out width is 43'-2" typically but varies at bridge ends. Structure is to be repaired as detailed in these plans.

**DESIGN STRESSES**

**FIELD UNITS (EXIST. CONST.)**

$f'_c = 3,500$  psi  
 $f_y = 60,000$  psi  
 $f_y = 50,000$  psi M223 Gr.50 & M222  
 $f_y = 36,000$  psi M183

**FIELD UNITS (NEW CONST.)**

$f'_c = 4,000$  psi (Superstructure)  
 $f'_c = 3,500$  psi (Substructure)  
 $f_y = 60,000$  psi (Reinforcement)

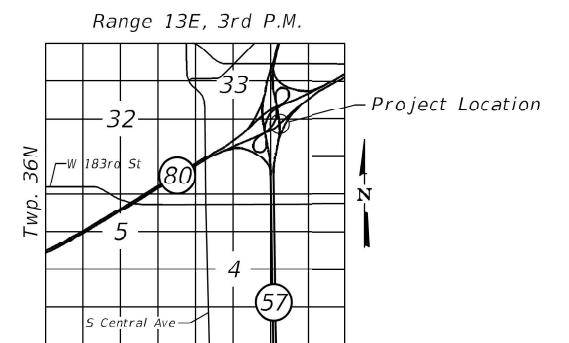
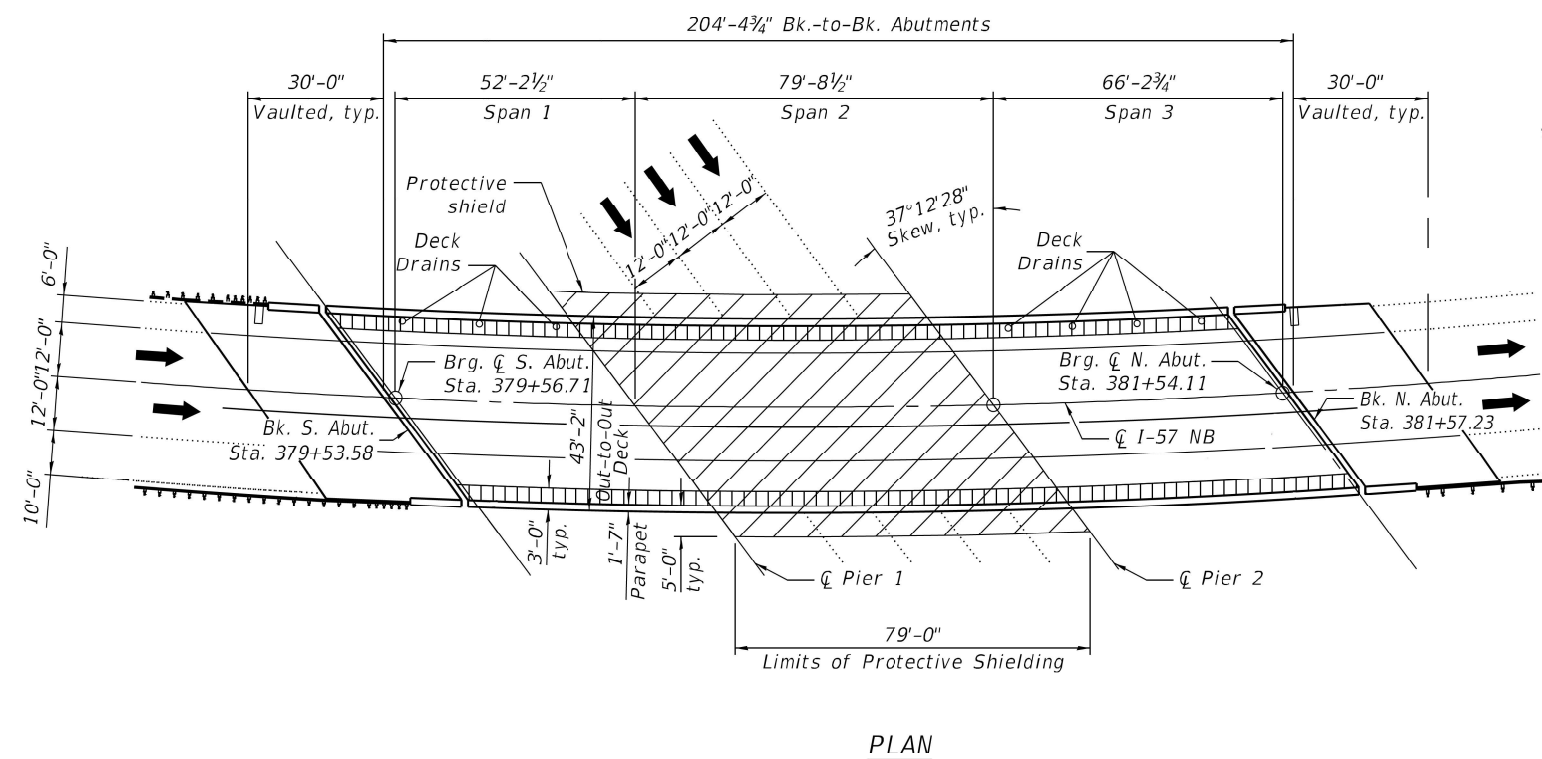
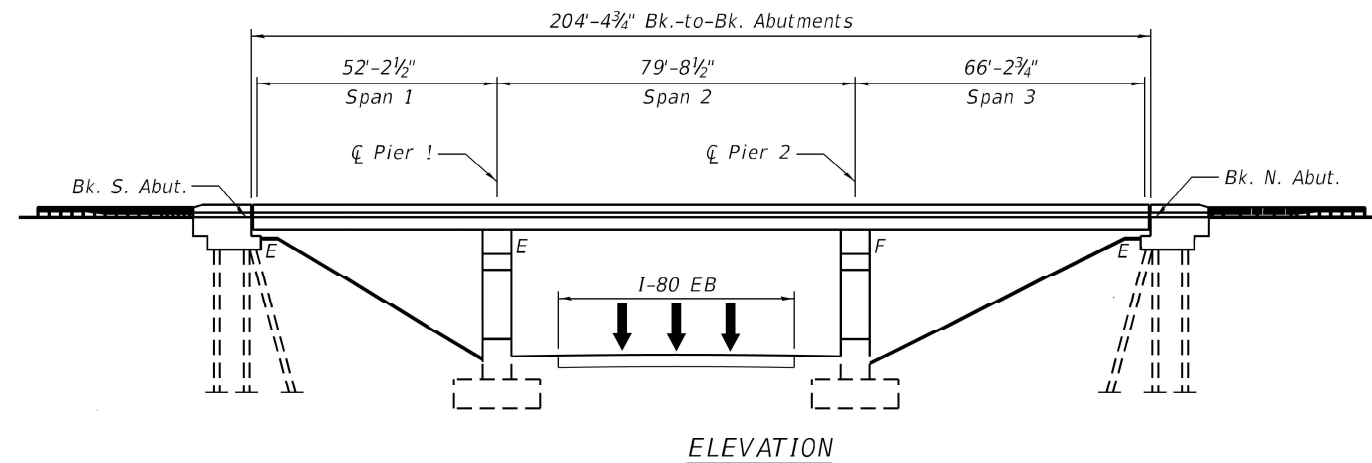
**DESIGN SPECIFICATIONS**

2002 AASHTO Standard Specifications  
 for Highway Bridges

**LOADING HS20-44**

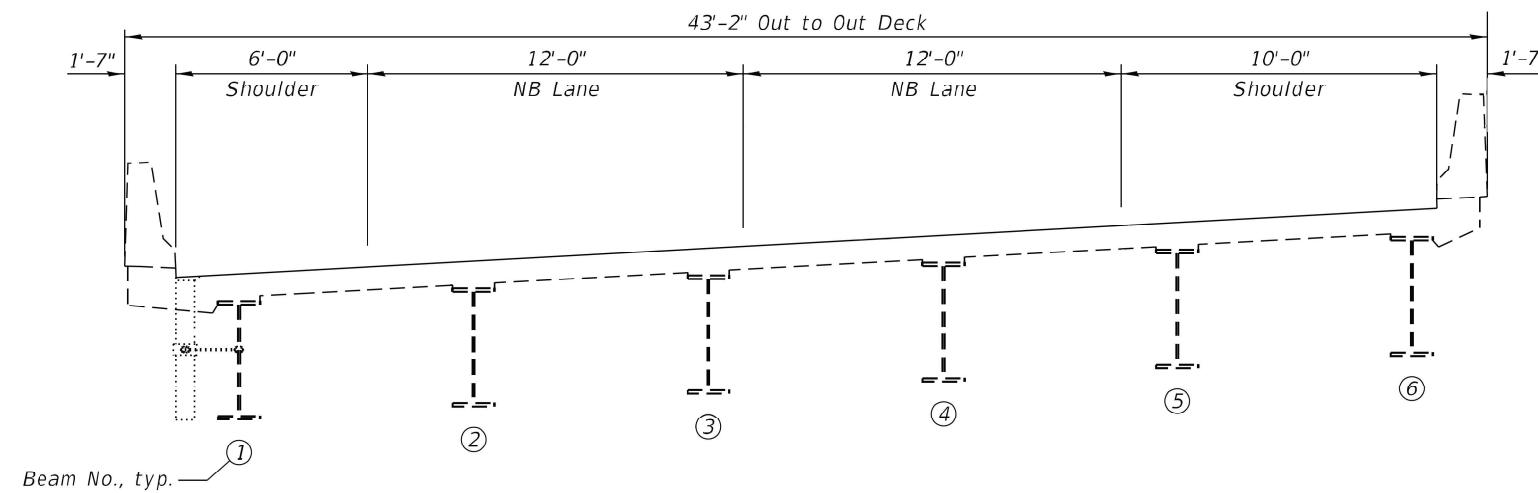
Existing and Proposed

# FOR INFORMATION ONLY



MODEL: Default  
 FILE: 3dmodel.dwg  
 PLOT DATE: 10/21/2022  
 PLOT SCALE: 100,0000' / in.  
 USER NAME: Jacob.Roth  
 DESIGNED: -  
 DRAWN: -  
 CHECKED: -  
 DATE: -  
 REVISED: -  
 REVISED: -  
 REVISED: -  
 REVISED: -  
 STATE OF ILLINOIS  
 DEPARTMENT OF TRANSPORTATION  
 LOCATION 2: PLAN AND ELEVATION  
 I-57 AT I-80 INTERCHANGE (SN 016-0053)  
 SCALE: SHEET 1 OF 4 SHEETS STA. TO STA.  
 SECTION FAI 57 22 BP COUNTY COOK TOTAL SHEETS 24 SHEET NO. 9  
 ILLINOIS FED. AID PROJECT CONTRACT NO. 62U15

# FOR INFORMATION ONLY



**CROSS SECTION**  
(Looking North)

MODEL: Default  
FILE: h:\m\p\p\subject-cw-beam\p\p\p\DOT Documents\DOT Office\Dir\rdet\_1\Project\101323\CADD\data\Design\101323-Sub\bridge.dgn

USER NAME = Jacob.Roth	DESIGNED -	REVISED -
	DRAWN -	REVISED -
PLOT SCALE = 100,0000 ' / in.	CHECKED -	REVISED -
PLOT DATE = 10/21/2022	DATE -	REVISED -

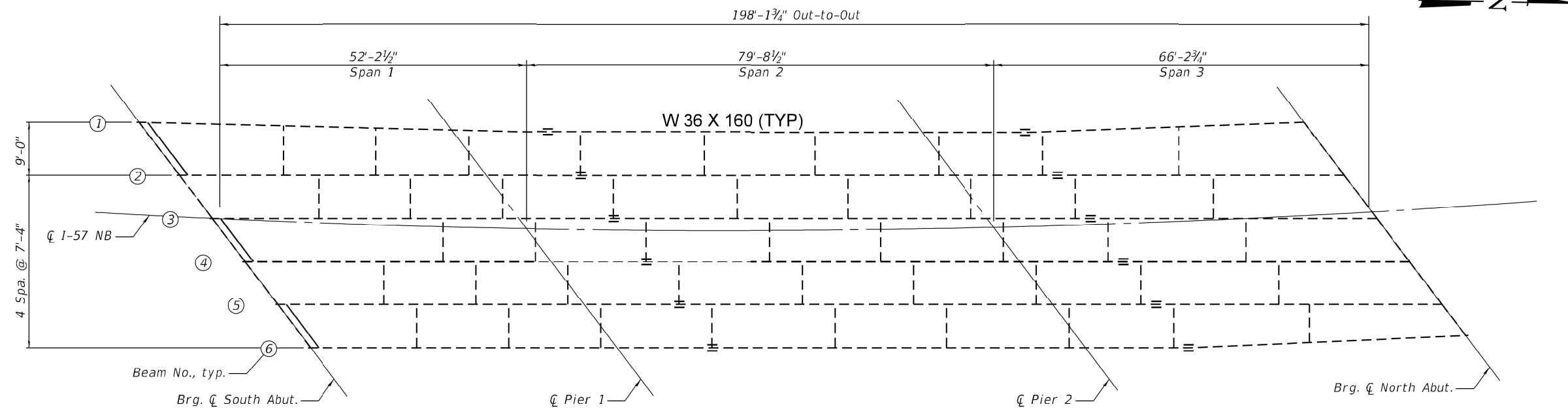
**STATE OF ILLINOIS**  
**DEPARTMENT OF TRANSPORTATION**

**LOCATION 2: CROSS SECTION**  
**I-57 AT I-80 INTERCHANGE (SN 016-0053)**

SCALE: SHEET 2 OF 4 SHEETS STA. TO STA.

F.A.I. RTE.	SECTION	COUNTY	TOTAL SHEETS	SHEET NO.
57	FAI 57 22 BP	COOK	24	10
ILLINOIS FED. AID PROJECT			CONTRACT NO. 62U15	

# FOR INFORMATION ONLY



FRAMING PLAN

ALL END DIAPHRAGMS: W12 X 40 (TYP)  
 ALL INTERIOR DIAPHRAGMS: W16 X 36 (TYP)

MODEL: Default  
 FILE: I:\a\1515\1515.dwg  
 PLOT DATE: 10/21/2022

USER NAME = Jacob.Roth	DESIGNED -	REVISED -
PLOT SCALE = 100,0000' / in.	DRAWN -	REVISED -
PLOT DATE = 10/21/2022	CHECKED -	REVISED -
	DATE -	REVISED -

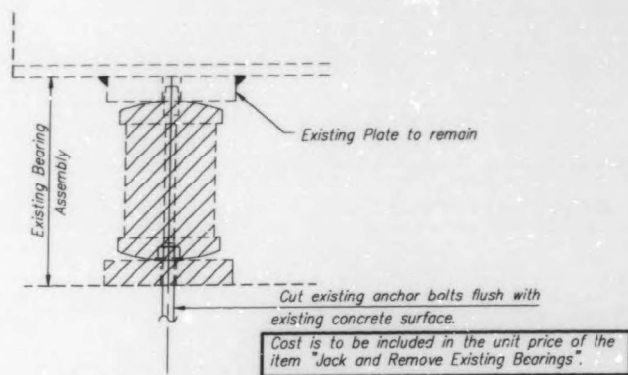
**STATE OF ILLINOIS  
 DEPARTMENT OF TRANSPORTATION**

<b>LOCATION 2: FRAMING PLAN</b>	
<b>I-57 AT I-80 INTERCHANGE (SN 016-0053)</b>	
SCALE:	SHEET 3 OF 4 SHEETS STA. TO STA.

F.A.I. RTE.	SECTION	COUNTY	TOTAL SHEETS	SHEET NO.
57	FAI 57 22 BP	COOK	24	11
CONTRACT NO. 62U15				
ILLINOIS FED. AID PROJECT				

# FOR INFORMATION ONLY

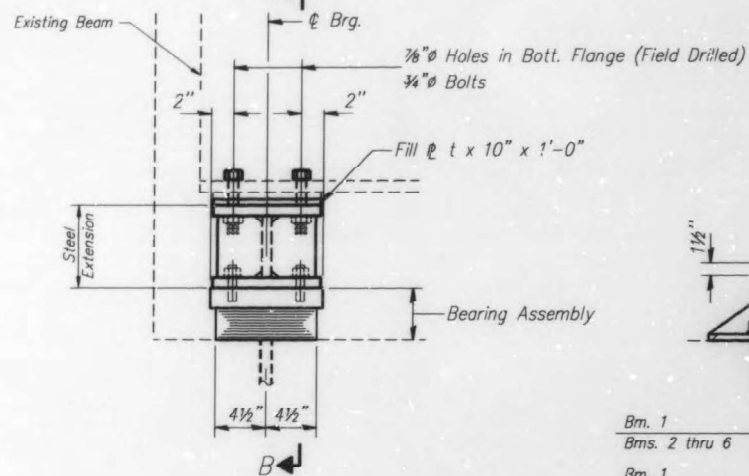
STATE OF ILLINOIS  
DEPARTMENT OF TRANSPORTATION



### EXISTING BEARING REMOVAL DETAIL

(South Abut. and North Abut.)

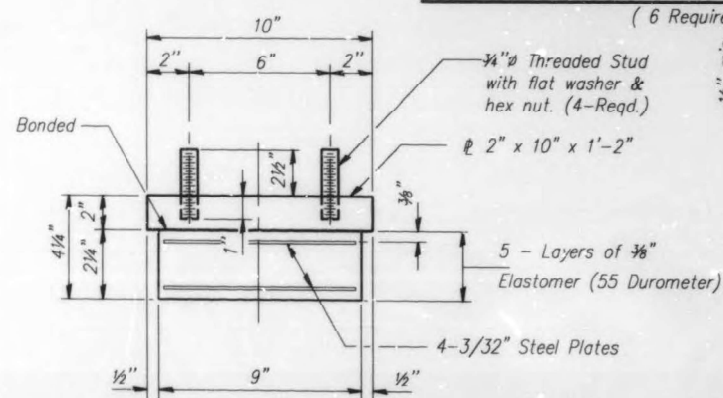
Cost is to be included in the unit price of the item "Jack and Remove Existing Bearings".



### ELEVATION AT NORTH ABUTMENT

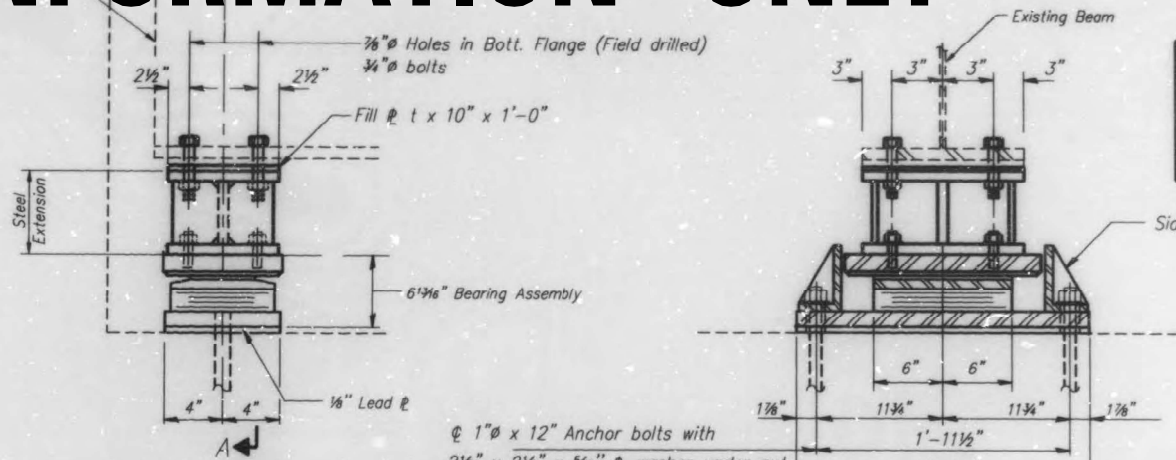
### TYPE I ELASTOMERIC EXP. BRG. AT NORTH ABUTMENT

(6 Required)



### BEARING ASSEMBLY AT NORTH ABUT.

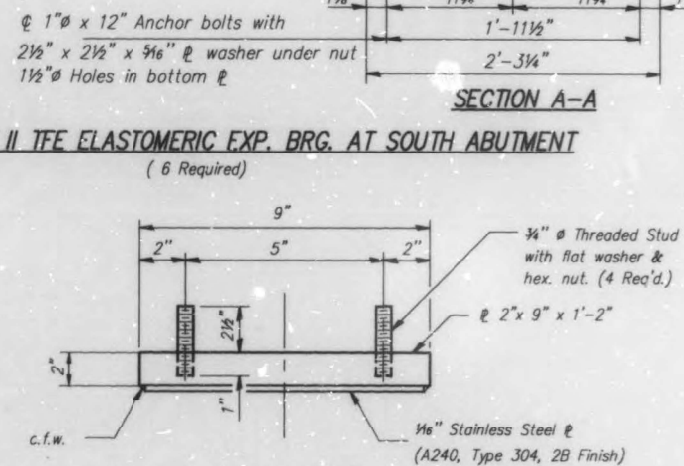
Note: Shim plates shall not be placed under Bearing Assembly.



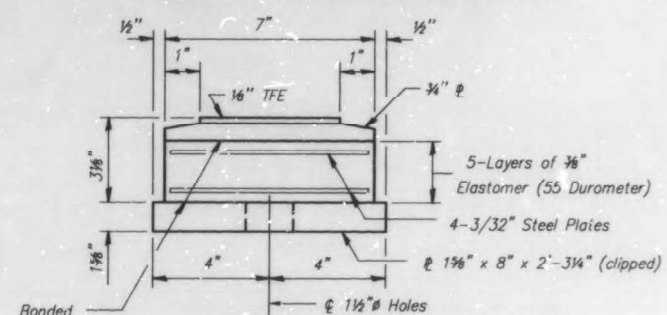
### ELEVATION AT SOUTH ABUT.

### TYPE II TFE ELASTOMERIC EXP. BRG. AT SOUTH ABUTMENT

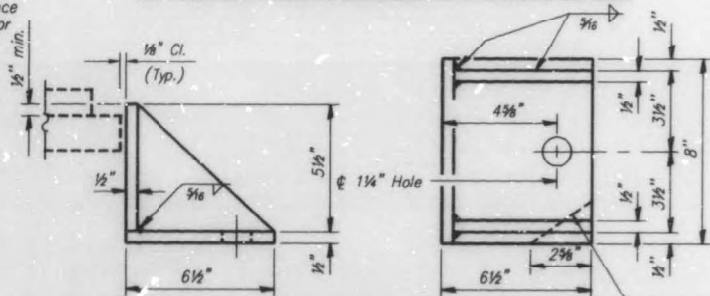
(6 Required)



### TOP BEARING ASSEMBLY AT SOUTH ABUT.



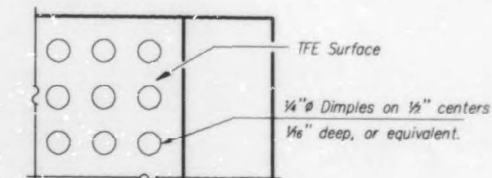
### BOTTOM BEARING ASSEMBLY AT SOUTH ABUT.



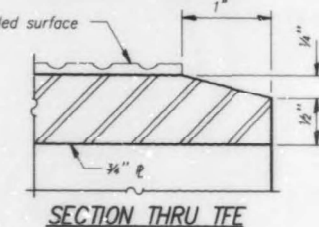
### SIDE RETAINER AT SOUTH ABUT.

Equivalent rolled angle with stiffeners will be allowed in lieu of welded plates. Weight included with Structural Steel.

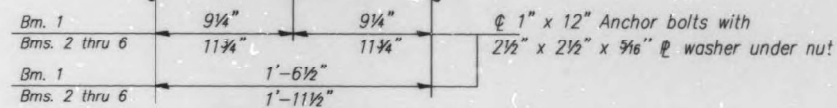
	FILL $\phi$ THICKNESS "t" (in.)					
	BM 1	BM 2	BM 3	BM 4	BM 5	BM 6
North Abutment	—	1/8	—	—	1/8	1/8
South Abutment	—	3/8	1/2	1/8	1/8	1/4



### PLAN-TFE SURFACE



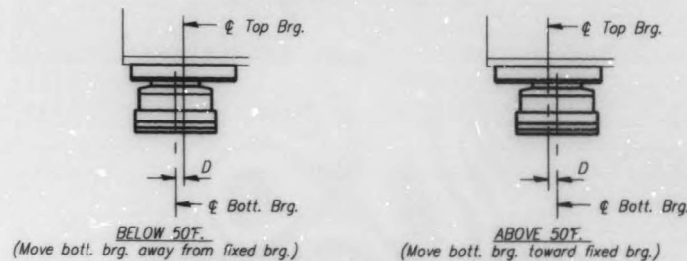
### SECTION THRU TFE



### SECTION B-B

### SIDE RETAINER - AT NORTH ABUTMENT

Equivalent rolled angle with stiffeners will be allowed in lieu of welded plates. Weight included with Structural Steel.



### SETTING ANCHOR BOLTS AT EXP. BRG.

D=1/8" per each 100' of expansion for every 15' temp. change from the normal temp. of 50F.

STATE OF ILLINOIS  
DEPARTMENT OF TRANSPORTATION

LOCATION 2: BEARING DETAILS  
I-57 AT I-80 INTERCHANGE (SN 016-0053)

SCALE: SHEET 4 OF 4 SHEETS STA. TO STA.

F.A.I. RTE.	SECTION	COUNTY	TOTAL SHEETS	SHEET NO.
57	FAI 57 22 BP	COOK	24	12
CONTRACT NO. 62U15				

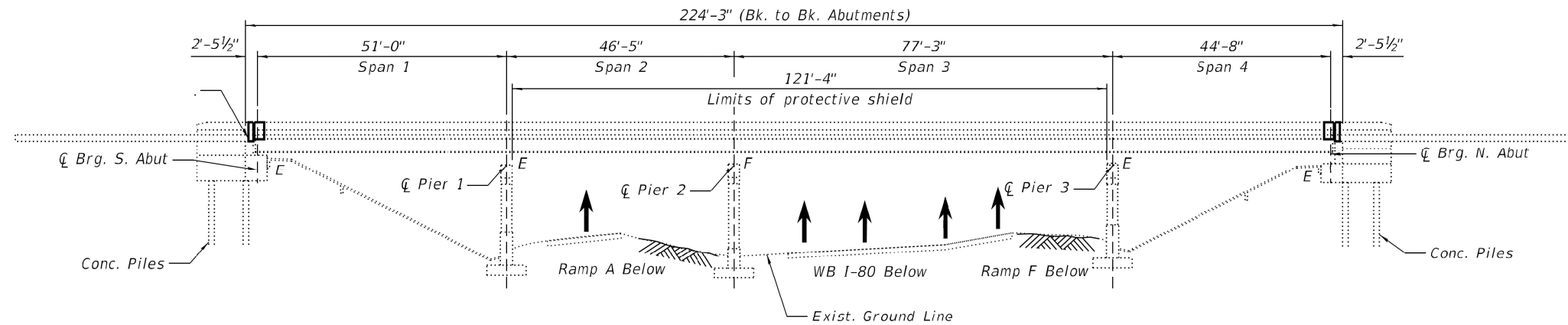
ILLINOIS FED. AID PROJECT

Existing Structure: S.N. 016-2026 was originally build in 1965 and reconstructed/widened in 1996. The structure has a back-to-back abutment length of 224'-3" and an out-to-out deck width that varies from 73'-2" to 77'-8 3/4". The superstructure consists of a 7 1/2" thick reinforced concrete deck supported on four span continuous steel beams of span lengths 51'-0", 46'-5", 77'-3" and 44'-8". The substructure consists of reinforced concrete abutments supported on reinforced concrete piles and reinforced concrete piers on spread footings.

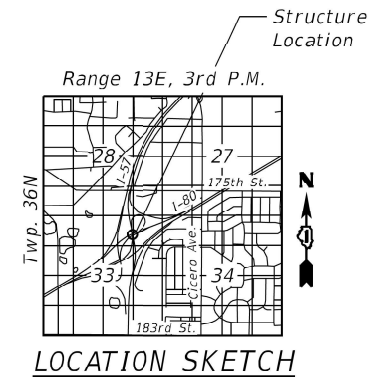
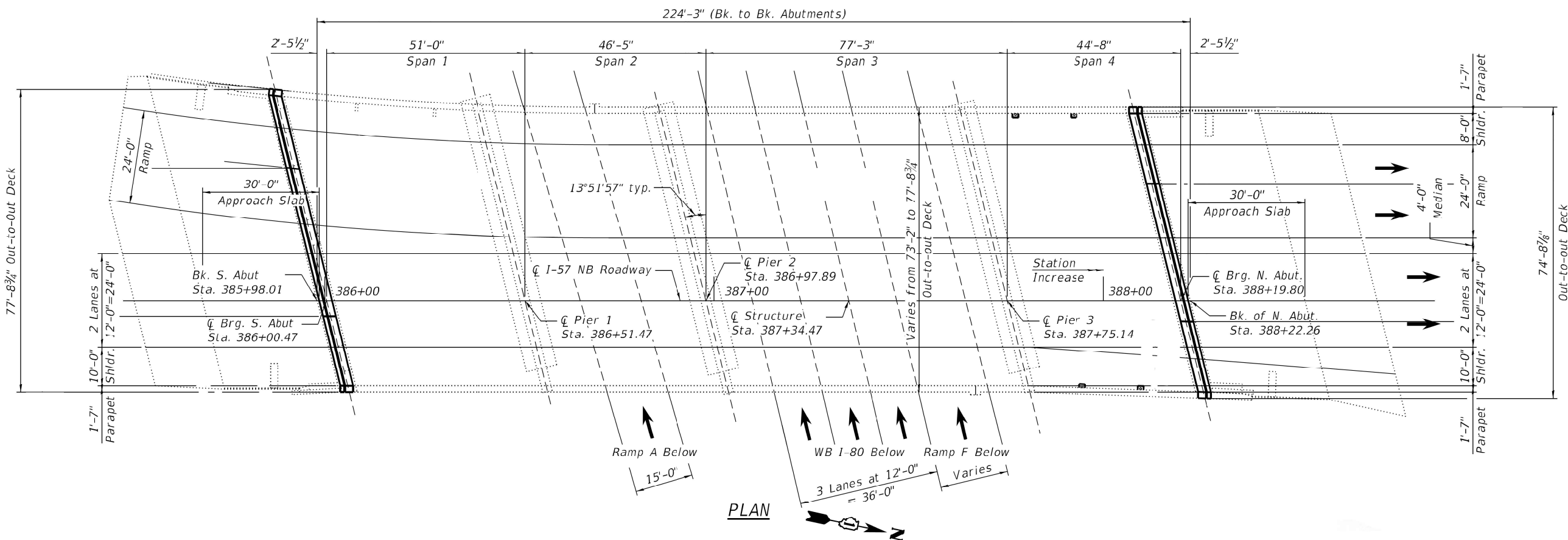
**LOADING**  
 HS20-44  
 (Existing and Proposed)

**DESIGN SPECIFICATION**  
 2002 AASHTO Standard Specification for Highway Bridges, 17th Edition  
 RECONSTRUCTION  
 1992 AASHTO Standard Specifications with 1993 Interim

# FOR INFORMATION ONLY



\* Measured Radially



MODEL: Default  
 FILE: 30116.ctb  
 PROJECT: I:\Projects\101323\CADD\Drawings\101323-subbridge.dwg  
 USER: jacob.roth  
 PLOT DATE: 10/21/2022

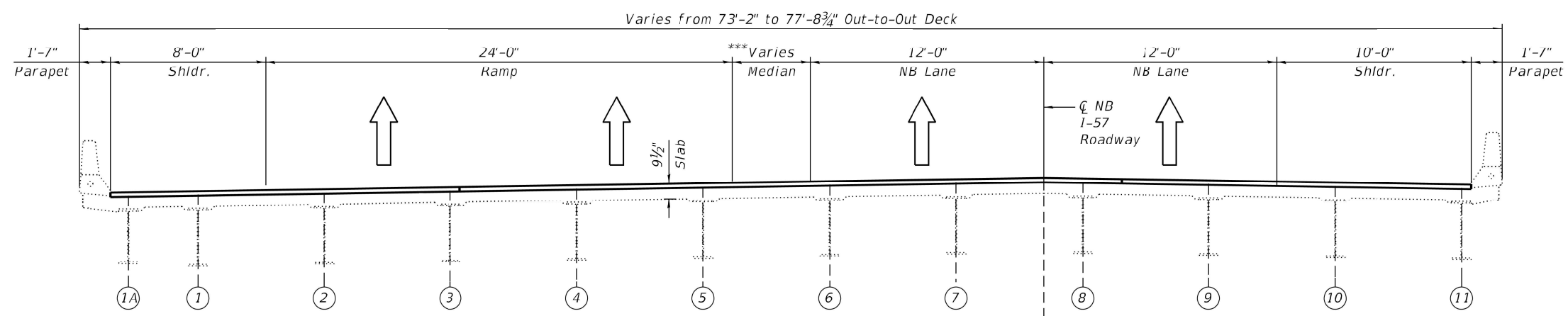
USER NAME = Jacob.Roth	DESIGNED -	REVISED -
PLOT SCALE = 100,0000' / in.	DRAWN -	REVISED -
PLOT DATE = 10/21/2022	CHECKED -	REVISED -
	DATE -	REVISED -

**STATE OF ILLINOIS  
 DEPARTMENT OF TRANSPORTATION**

<b>LOCATION 3: PLAN AND ELEVATION</b>	
<b>I-57 AT I-80 INTERCHANGE (SN 016-2026)</b>	
SCALE:	SHEET 1 OF 5 SHEETS STA. TO STA.

F.A.I. RTE.	SECTION	COUNTY	TOTAL SHEETS	SHEET NO.
57	FAI 57 22 BP	COOK	24	13
CONTRACT NO. 62U15				
ILLINOIS FED. AID PROJECT				

# FOR INFORMATION ONLY



## FINAL DECK CROSS SECTION

(Looking North)

MODEL: Default  
FILE NAME: p:\ultra-cw-bee\paw.com\PIV\DOT\Documents\DOT Office\Dir\rdet\_1\Project\ID101323\CADD\data\Design\ID101323-abridge.dgn

USER NAME = Jacob.Roth	DESIGNED -	REVISED -
	DRAWN -	REVISED -
PLOT SCALE = 100,0000' / in.	CHECKED -	REVISED -
PLOT DATE = 10/21/2022	DATE -	REVISED -

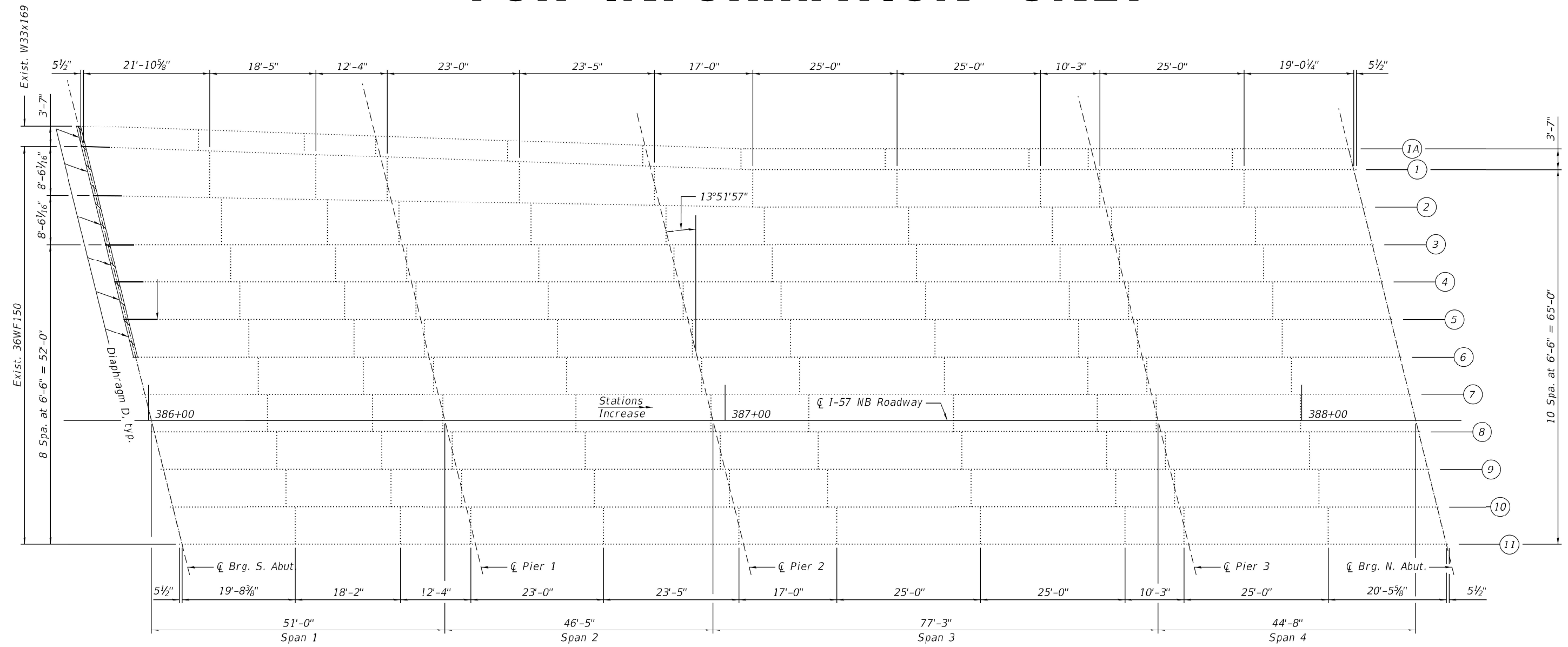
**STATE OF ILLINOIS  
DEPARTMENT OF TRANSPORTATION**

**LOCATION 3: CROSS SECTION  
I-57 AT I-80 INTERCHANGE (SN 016-2026)**

SCALE: SHEET 2 OF 5 SHEETS STA. TO STA.

F.A.I. RTE.	SECTION	COUNTY	TOTAL SHEETS	SHEET NO.
57	FAI 57 22 BP	COOK	24	14
ILLINOIS FED. AID PROJECT			CONTRACT NO. 62U15	

# FOR INFORMATION ONLY



FRAMING PLAN



MODEL: Default  
 FILE: I:\AutoCAD\Projects\I-57\I-57\DOT\Documents\DOT\Office\Drawings\I-57\I-57\I-57-Subbridge.dwg

USER NAME = Jacob.Roth	DESIGNED -	REVISED -
PLOT SCALE = 100,0000' / in.	DRAWN -	REVISED -
PLOT DATE = 10/21/2022	CHECKED -	REVISED -
	DATE -	REVISED -

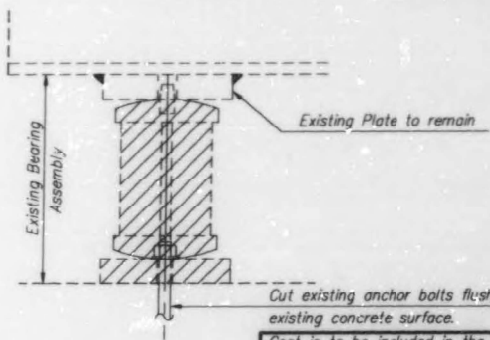
STATE OF ILLINOIS  
DEPARTMENT OF TRANSPORTATION

LOCATION 3: FRAMING PLAN  
I-57 AT I-80 INTERCHANGE (SN 016-2026)

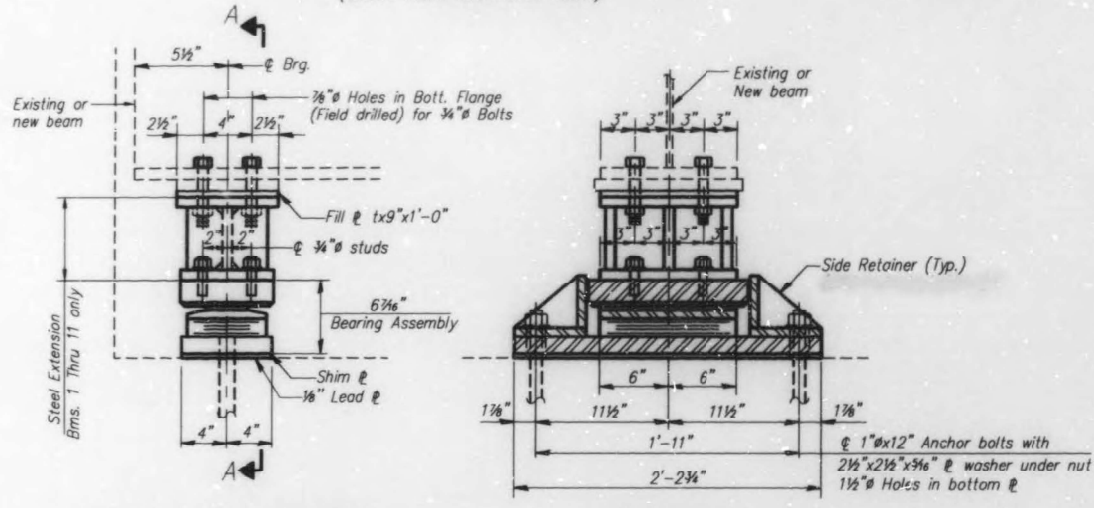
SCALE: SHEET 3 OF 5 SHEETS STA. TO STA.

F.A.I. RTE.	SECTION	COUNTY	TOTAL SHEETS	SHEET NO.
57	FAI 57 22 BP	COOK	24	15
CONTRACT NO. 62U15				
ILLINOIS FED. AID PROJECT				

# FOR INFORMATION ONLY



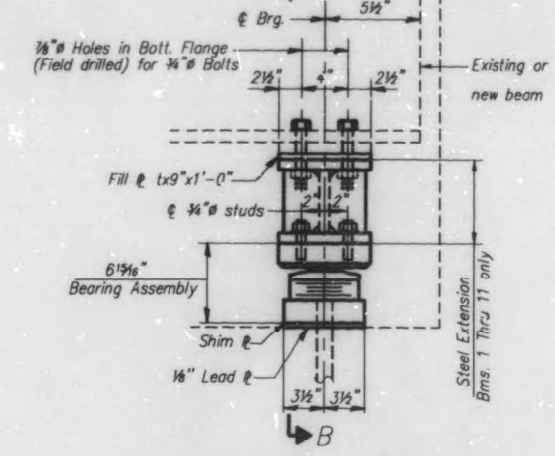
**EXISTING BEARING REMOVAL DETAIL**  
(South Abut. and North Abut.)



**ELEVATION AT SOUTH ABUT.**

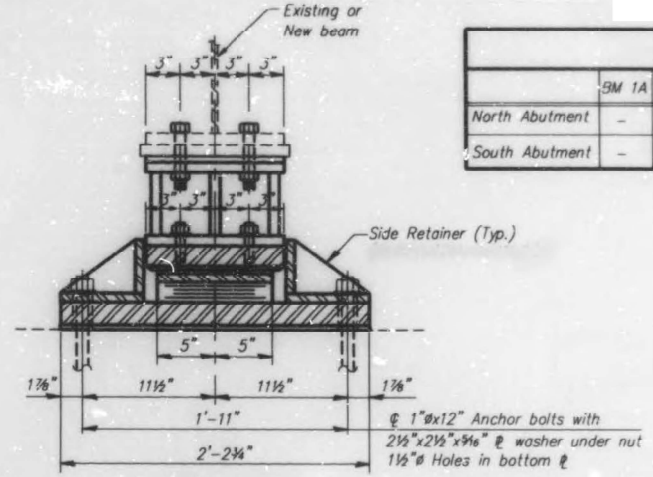
**SECTION A-A**

**TYPE II TFE ELASTOMERIC EXP. BRG. AT SOUTH ABUTMENT**  
(12 Required)



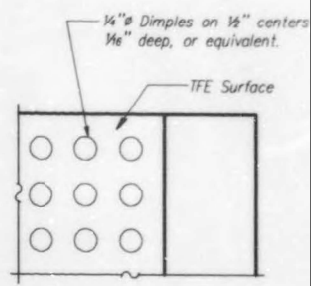
**ELEVATION AT NORTH ABUT.**

**TYPE II TFE ELASTOMERIC EXP. BRG. AT NORTH ABUTMENT**  
(12 Required)

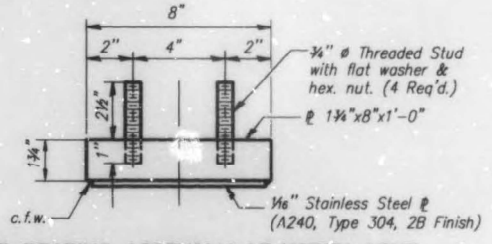
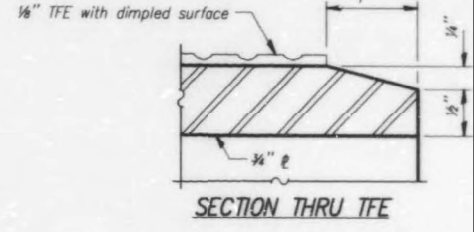


**SECTION B-B**

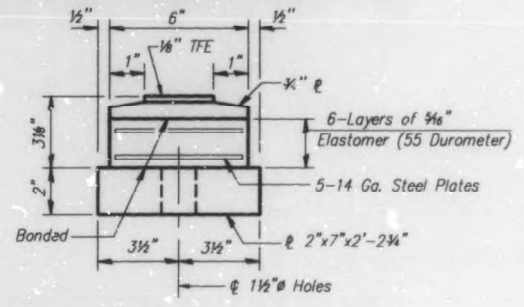
	FILL $\phi$ THICKNESS "t" (in.)										
	BM 1A	BM 1	BM 2	BM 3	BM 4	BM 5	BM 6	BM 7	BM 8	BM 9	BM 10
North Abutment	-	3/8	3/8	3/8	1	3/8	3/8	3/8	1 1/8	-	3/8
South Abutment	-	-	3/8	3/8	3/8	1/4	1/8	5/8	5/8	1/4	3/8



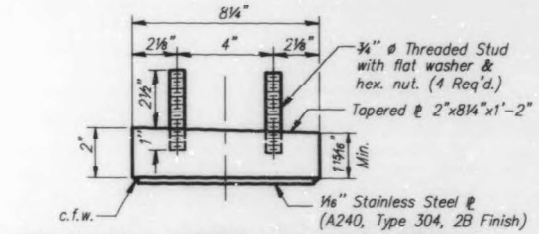
**PLAN-TFE SURFACE**



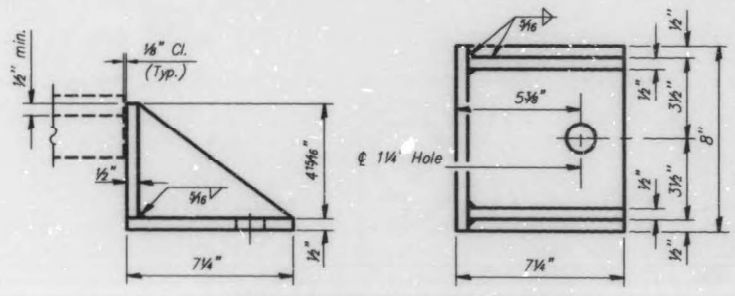
**TOP BEARING ASSEMBLY AT NORTH ABUT.**



**BOTTOM BEARING ASSEMBLY AT NORTH ABUT.**

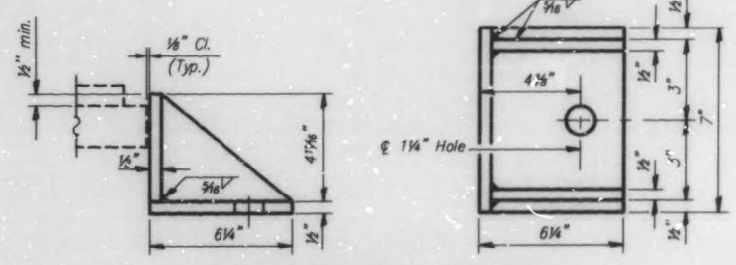


**TOP BEARING ASSEMBLY AT SOUTH ABUT.**



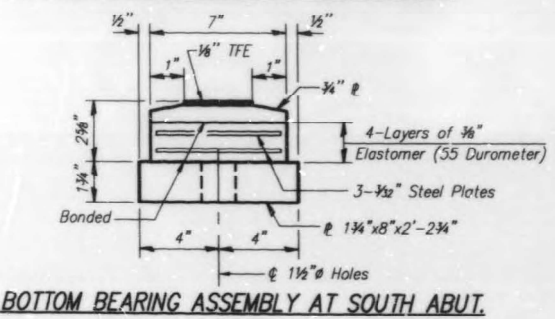
**SIDE RETAINER AT SOUTH ABUT.**  
(24 Required)

Equivalent rolled angle with stiffeners will be allowed in lieu of welded plates. Weight included with Structural Steel.

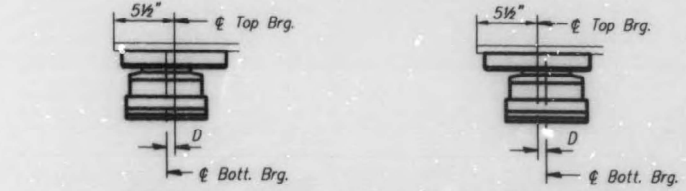


**SIDE RETAINER AT NORTH ABUT.**  
(24 Required)

Equivalent rolled angle with stiffeners will be allowed in lieu of welded plates. Weight included with Structural Steel.



**BOTTOM BEARING ASSEMBLY AT SOUTH ABUT.**



**SETTING ANCHOR BOLTS AT EXP. BRG.**

D=1/8" per each 100' of expansion for every 15' temp. change from the normal temp. of 50F.

MODEL Defaul  
FILE NAME: p:\build\paw\_bearings\com\PIV\DOT\Documents\DOT\Drawings\Bearing\101323\CADD\Bearing\101323-sbrldg.dwg

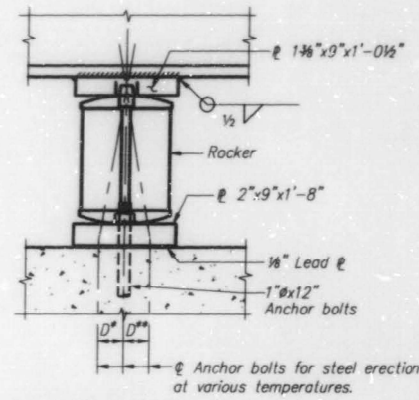
USER NAME = Jacob.Roth	DESIGNED -	REVISED -
	DRAWN -	REVISED -
PLOT SCALE = 100,0000' / in.	CHECKED -	REVISED -
PLOT DATE = 10/21/2022	DATE -	REVISED -

**STATE OF ILLINOIS  
DEPARTMENT OF TRANSPORTATION**

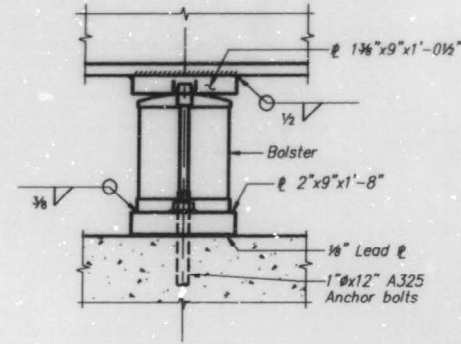
LOCATION 3: BEARING DETAILS		F.A.I. RTE.	SECTION	COUNTY	TOTAL SHEETS	SHEET NO.
I-57 AT I-80 INTERCHANGE (SN 016-2026)		57	FAI 57 22 BP	COOK	24	16
SCALE:	SHEET 4 OF 5 SHEETS	STA.	TO STA.	CONTRACT NO. 62U15		
ILLINOIS FED. AID PROJECT						



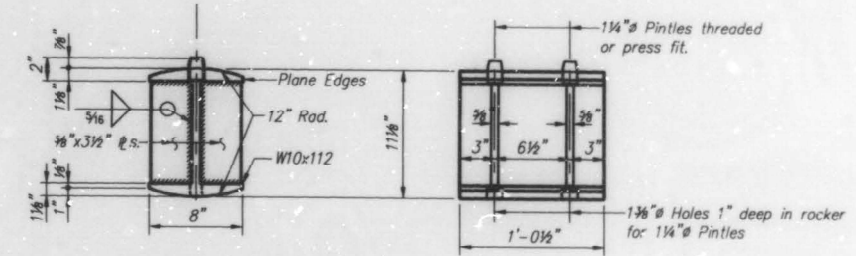
STATE OF ILLINOIS  
DEPARTMENT OF TRANSPORTATION



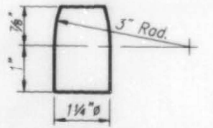
**ELEVATION AT PIERS 1 & 3**  
(BEAM 1A ONLY)



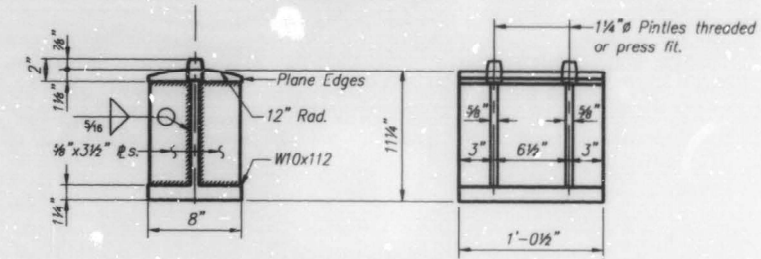
**ELEVATION AT PIER 2**  
(BEAM 1A ONLY)



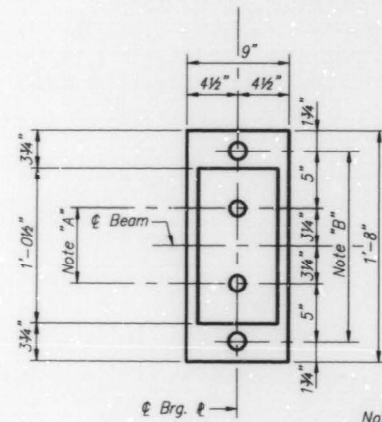
**ROCKER**



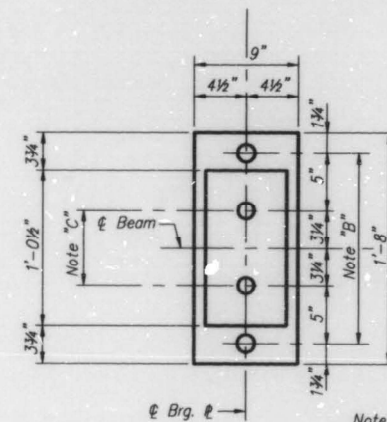
**PINTLE**



**BOLSTER**



**PLAN AT PIERS 1 & 3**  
(BEAM 1A ONLY)



**PLAN AT PIER 2**  
(BEAM 1A ONLY)

Note "A"  
1 3/8" Holes  
in top for 1 1/4" Pinstles.  
Thread or press fit 1 1/4" Pinstles in bottom.

Note "B"  
1 1/2" Holes for 1" x 12" Anchor bolts -  
3/16" x 2 1/2" x 2 1/2" washer under nut.

Note "C"  
1 3/8" Holes - 1" deep in  
top only for 1 1/4" Pinstles.

**FOR INFORMATION ONLY**

MODEL: Default  
FILE: 304152.ctb  
PROJECT: I:\Projects\DOT\Office\Drawings\1\Project\101323\CADD\Drawings\101323-Sub\101323-Sub.dwg

USER NAME = Jacob.Roth	DESIGNED -	REVISED -
	DRAWN -	REVISED -
PLOT SCALE = 100,0000' / in.	CHECKED -	REVISED -
PLOT DATE = 10/21/2022	DATE -	REVISED -

STATE OF ILLINOIS  
DEPARTMENT OF TRANSPORTATION

LOCATION 3: BEARING DETAILS  
I-57 AT I-80 INTERCHANGE (SN 016-2026)

SCALE: SHEET 5 OF 5 SHEETS STA. TO STA.

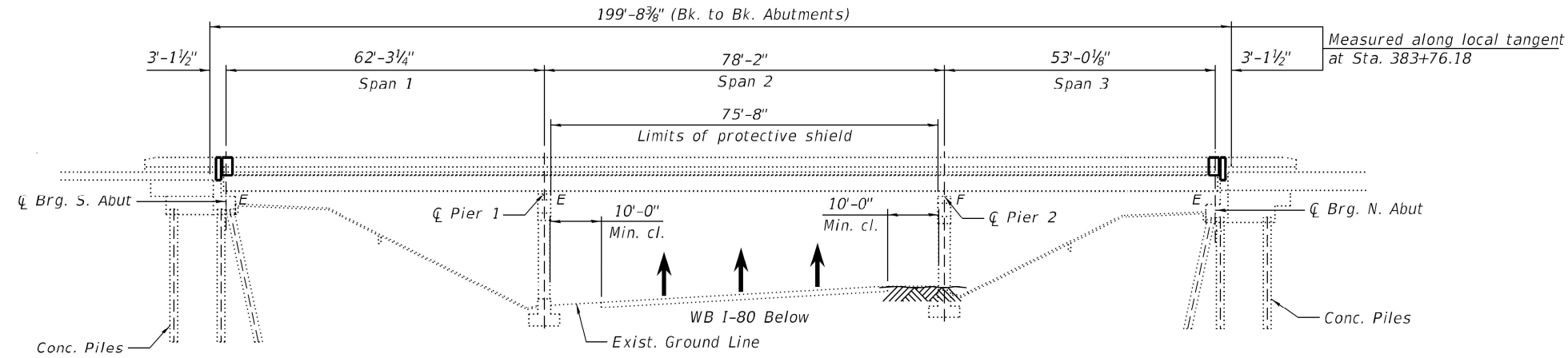
F.A.I. RTE.	SECTION	COUNTY	TOTAL SHEETS	SHEET NO.
57	FAI 57 22 BP	COOK	24	17
CONTRACT NO. 62U15				
ILLINOIS FED. AID PROJECT				

Existing Structure: S.N. 016-2027 was originally build in 1965 and reconstructed/widened in 1996. The structure has a back-to-back abutment length of 199'-8<sup>3</sup>/<sub>8</sub>" along the tangent line at Sta. 383+76.18 and an out-to-out deck width of 43'-2". The superstructure consists of a 7<sup>1</sup>/<sub>2</sub>" thick reinforced concrete deck supported on three span continuous steel beams of span lengths 62'-3<sup>1</sup>/<sub>4</sub>", 78'-2", and 53'-0<sup>1</sup>/<sub>8</sub>". The substructure consists of reinforced concrete abutments supported on reinforced concrete piles and reinforced concrete piers on spread footings.

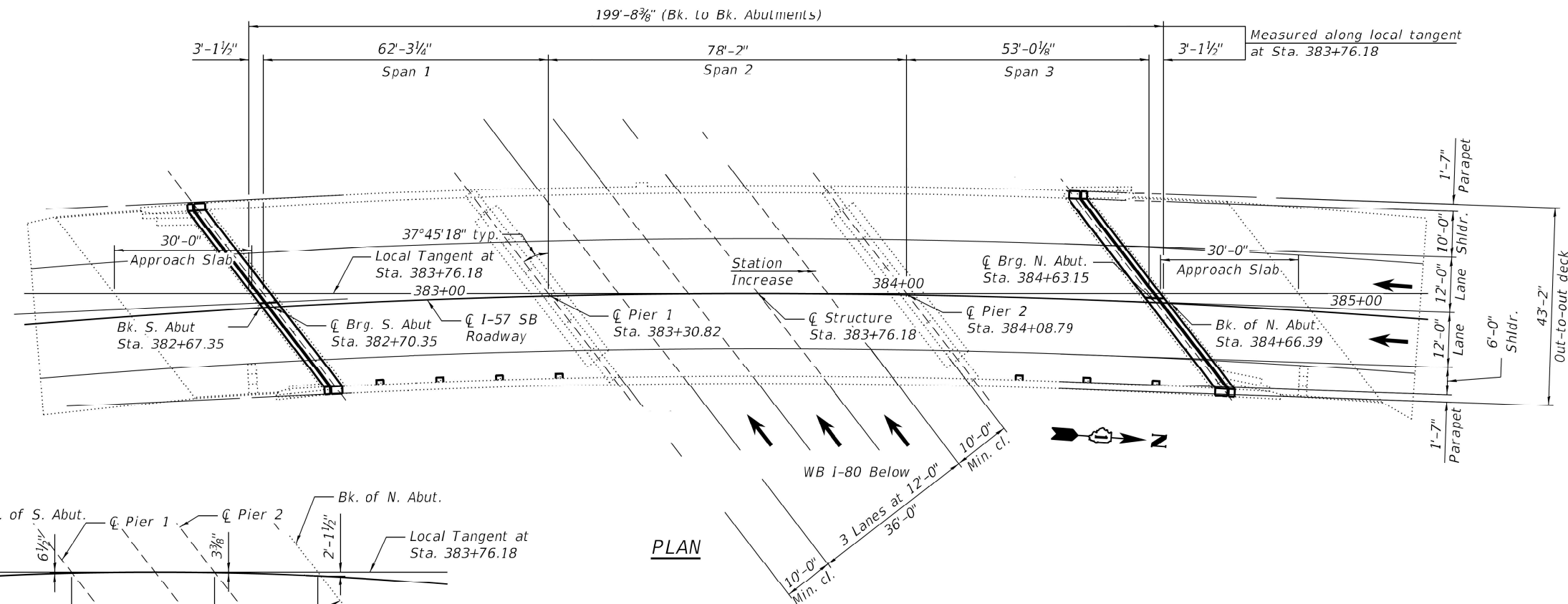
**LOADING**  
 HS20-44  
 (Existing and Proposed)

**DESIGN SPECIFICATION**  
 2002 AASHTO Standard Specification for  
 Highway Bridges, 17th Edition  
  
 RECONSTRUCTION  
 1992 AASHTO Standard Specifications with  
 1993 Interim

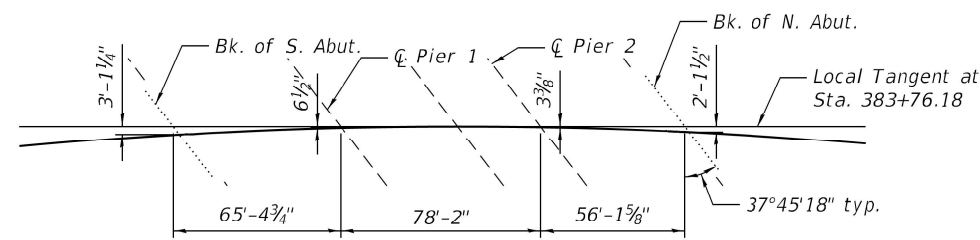
# FOR INFORMATION ONLY



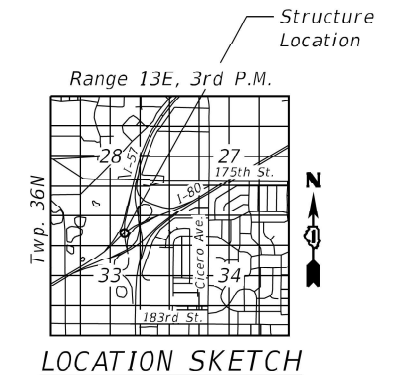
**ELEVATION**



**PLAN**



**EXISTING LAYOUT SKETCH**



MODEL: Default  
 FILE: AbutMfg.plt  
 PROJECT: C:\Users\jacob.rosch\Documents\DOT\Office\Bridgert\11\Project\101323\CADD\Drawings\101323-Subbridge.dwg

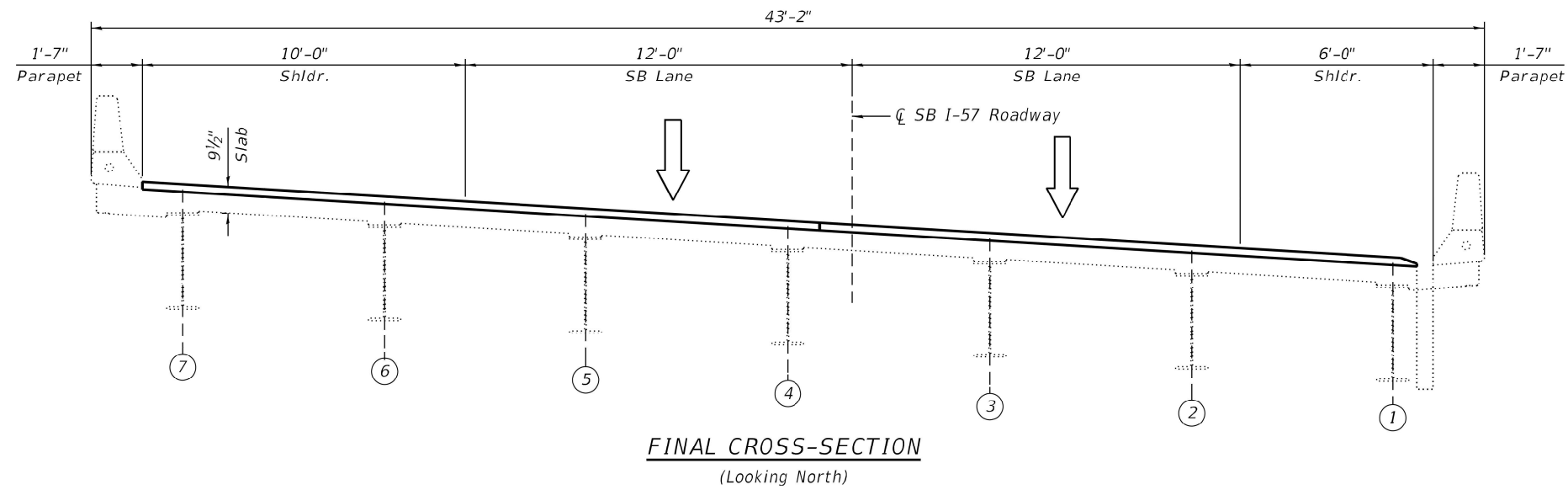
USER NAME = Jacob.Roth	DESIGNED -	REVISED -
PLOT SCALE = 100,0000' / in.	DRAWN -	REVISED -
PLOT DATE = 10/21/2022	CHECKED -	REVISED -
	DATE -	REVISED -

**STATE OF ILLINOIS  
 DEPARTMENT OF TRANSPORTATION**

**LOCATION 4: PLAN AND ELEVATION  
 I-57 AT I-80 INTERCHANGE (SN 016-2027)**  
 SCALE: SHEET 1 OF 4 SHEETS STA. TO STA.

F.A.I. RTE.	SECTION	COUNTY	TOTAL SHEETS	SHEET NO.
57	FAI 57 22 BP	COOK	24	18
CONTRACT NO. 62U15				
ILLINOIS FED. AID PROJECT				

# FOR INFORMATION ONLY



MODEL: Default  
 FILE: \\na11c-pw-bentley.com\PW\DOT\Documents\DOT Office\District 1\Project\101323\CADD\Drawings\101323-Subbridge.dgn

USER NAME = Jacob.Roth	DESIGNED -	REVISED -
	DRAWN -	REVISED -
PLOT SCALE = 100,0000' / in.	CHECKED -	REVISED -
PLOT DATE = 10/21/2022	DATE -	REVISED -

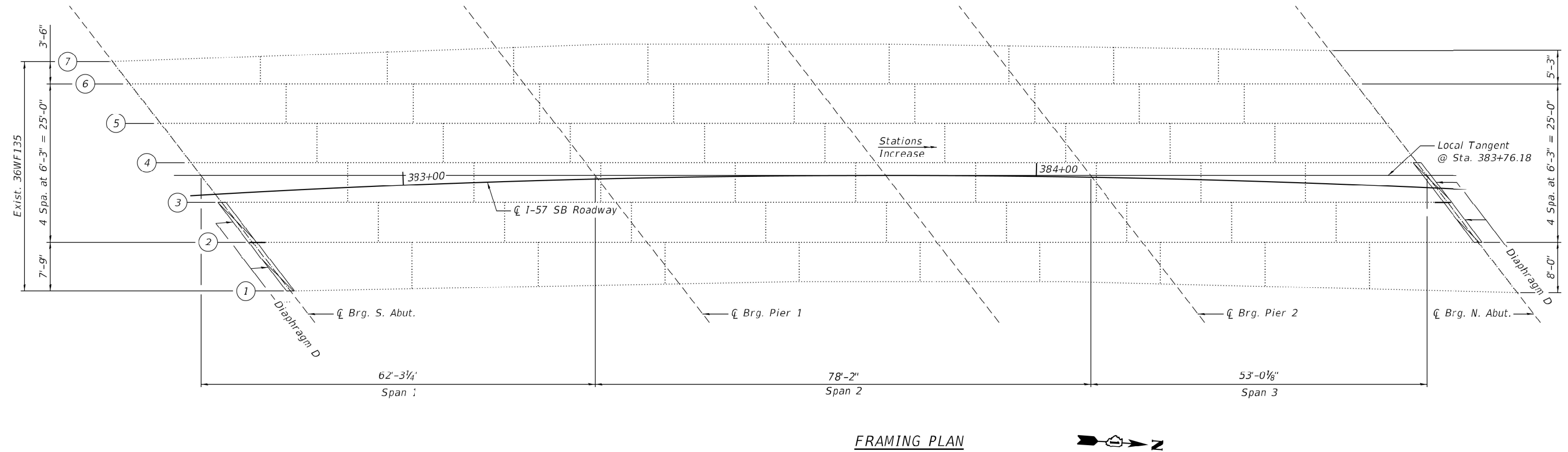
**STATE OF ILLINOIS  
DEPARTMENT OF TRANSPORTATION**

**LOCATION 4: CROSS SECTION  
I-57 AT I-80 INTERCHANGE (SN 016-2027)**

SCALE: SHEET 2 OF 4 SHEETS STA. TO STA.

F.A.I. RTE.	SECTION	COUNTY	TOTAL SHEETS	SHEET NO.
57	FAI 57 22 BP	COOK	24	19
CONTRACT NO. 62U15				
ILLINOIS FED. AID PROJECT				

# FOR INFORMATION ONLY



FRAMING PLAN



MODEL: Default  
 FILE: I:\a\156156\_156156.dwg  
 PLOT DATE: 10/21/2022  
 PROJECT: I:\Projects\101323\CADD\101323-Subbridge.dgn

USER NAME = Jacob.Roth	DESIGNED -	REVISED -
	DRAWN -	REVISED -
PLOT SCALE = 100,0000' / in.	CHECKED -	REVISED -
PLOT DATE = 10/21/2022	DATE -	REVISED -

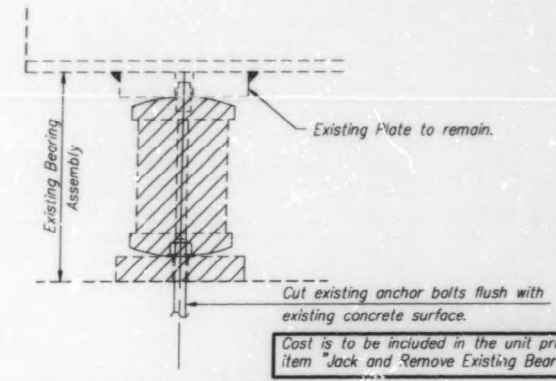
**STATE OF ILLINOIS**  
**DEPARTMENT OF TRANSPORTATION**

<b>LOCATION 4: FRAMING PLAN</b> <b>I-57 AT I-80 INTERCHANGE (SN 016-2027)</b>	
SCALE:	SHEET 3 OF 4 SHEETS STA. TO STA.

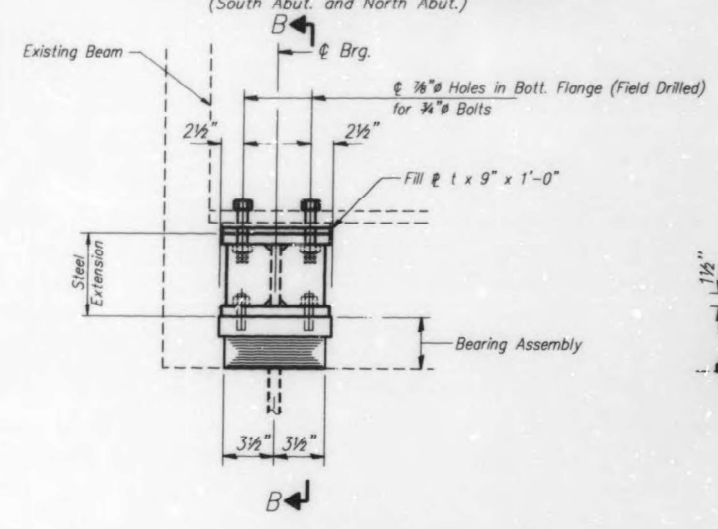
F.A.I. RTE.	SECTION	COUNTY	TOTAL SHEETS	SHEET NO.
57	FAI 57 22 BP	COOK	24	20
CONTRACT NO. 62U15				
ILLINOIS FED. AID PROJECT				

# FOR INFORMATION ONLY

STATE OF ILLINOIS  
DEPARTMENT OF TRANSPORTATION

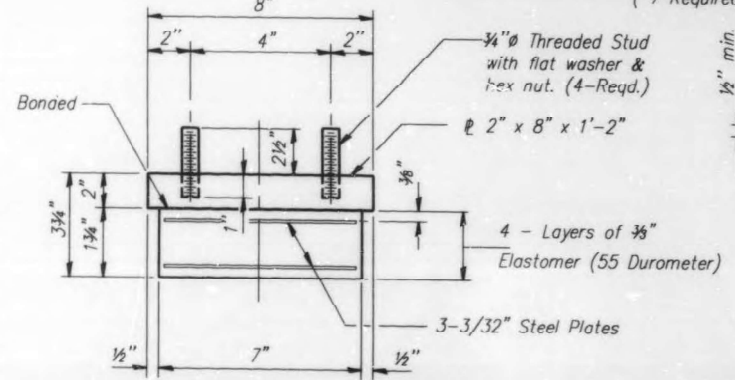


**EXISTING BEARING REMOVAL DETAIL**  
(South Abut. and North Abut.)



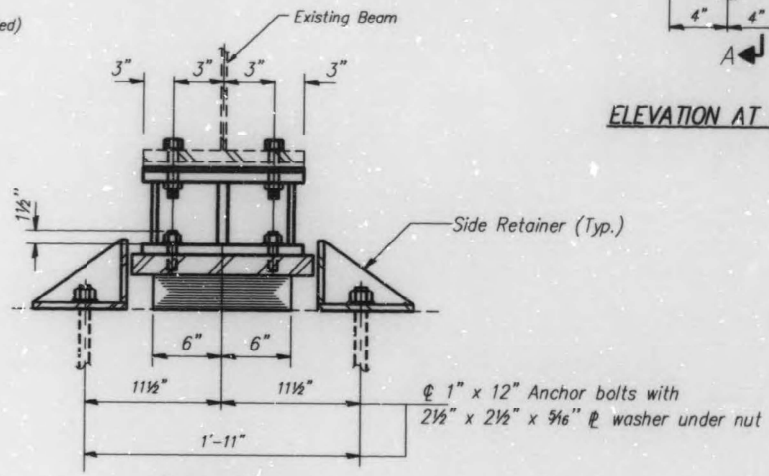
**ELEVATION AT NORTH ABUTMENT**

**TYPE I ELASTOMERIC EXP. BRG. AT NORTH ABUTMENT**  
(7 Required)



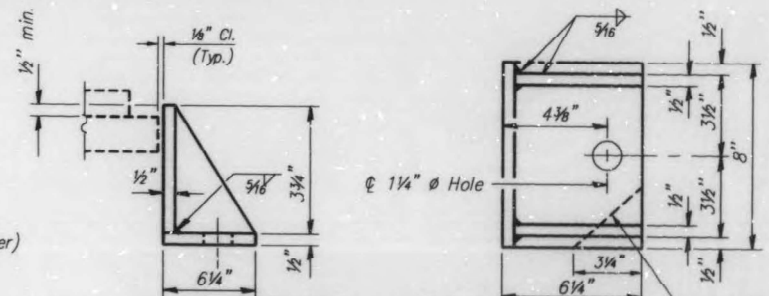
**BEARING ASSEMBLY AT NORTH ABUT.**

Note: Shim plates shall not be placed under Bearing Assembly.



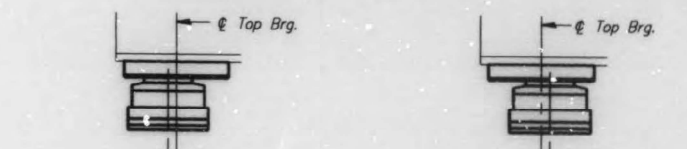
**SECTION B-B**

**TYPE I ELASTOMERIC EXP. BRG. AT NORTH ABUTMENT**  
(7 Required)



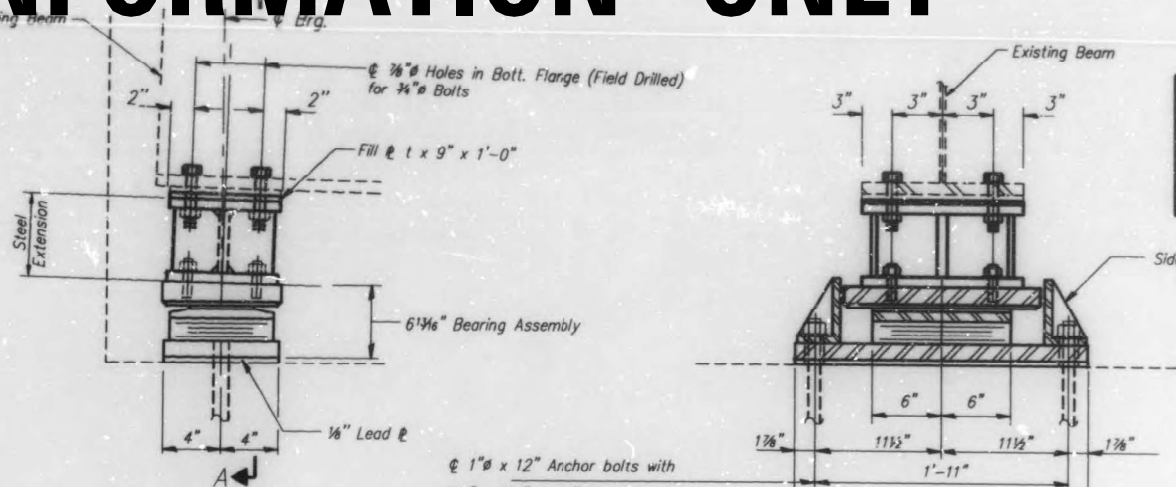
**SIDE RETAINER - AT NORTH ABUTMENT**

Equivalent rolled angle with stiffeners will be allowed in lieu of welded plates. Weight included with Structural Steel.



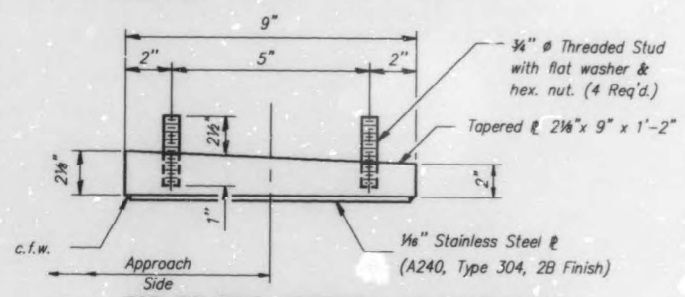
**SETTING ANCHOR BOLTS AT EXP. BRG.**

D = 1/8" per each 100' of expansion for every 15° temp. change

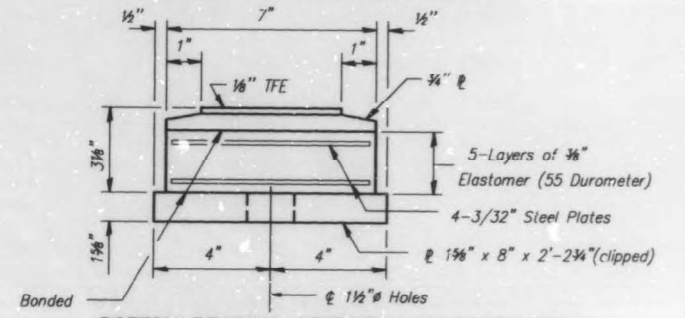


**ELEVATION AT SOUTH ABUT.**

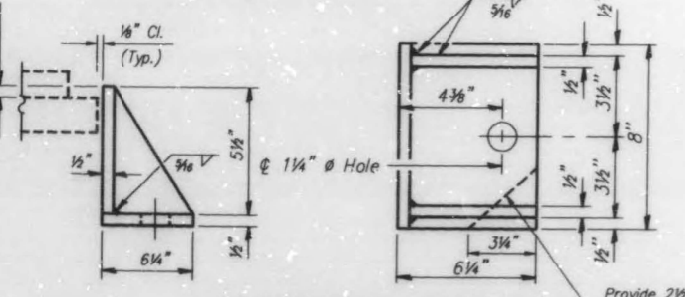
**TYPE II TFE ELASTOMERIC EXP. BRG. AT SOUTH ABUTMENT**  
(7 Required)



**TOP BEARING ASSEMBLY AT SOUTH ABUT.**



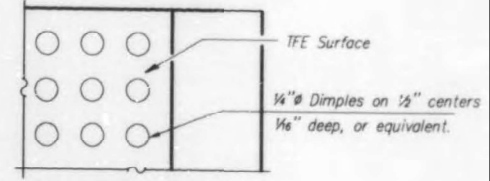
**BOTTOM BEARING ASSEMBLY AT SOUTH ABUT.**



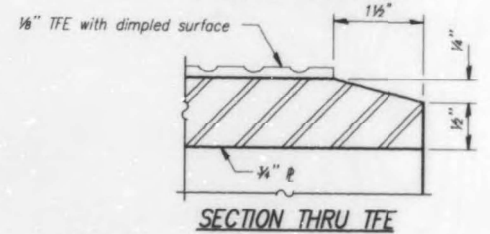
**SIDE RETAINER AT SOUTH ABUT.**

Equivalent rolled angle with stiffeners will be allowed in lieu of welded plates. Weight included with Structural Steel.

	FILL & THICKNESS "t" (in.)						
	BM 1	BM 2	BM 3	BM 4	BM 5	BM 6	BM 7
North Abutment	1/2	1/8	1/8	1/8	—	1/4	1/2
South Abutment	—	1/8	—	—	1/8	1/8	1/8



**PLAN-TFE SURFACE**



**SECTION THRU TFE**

MODEL Path: \\p0101101\p0101101\Documents\DOT\Office\Drawings\110101101\Drawings\110101101\110101101.dwg  
FILE NAME: 110101101.dwg  
PLOT DATE: 10/21/2022

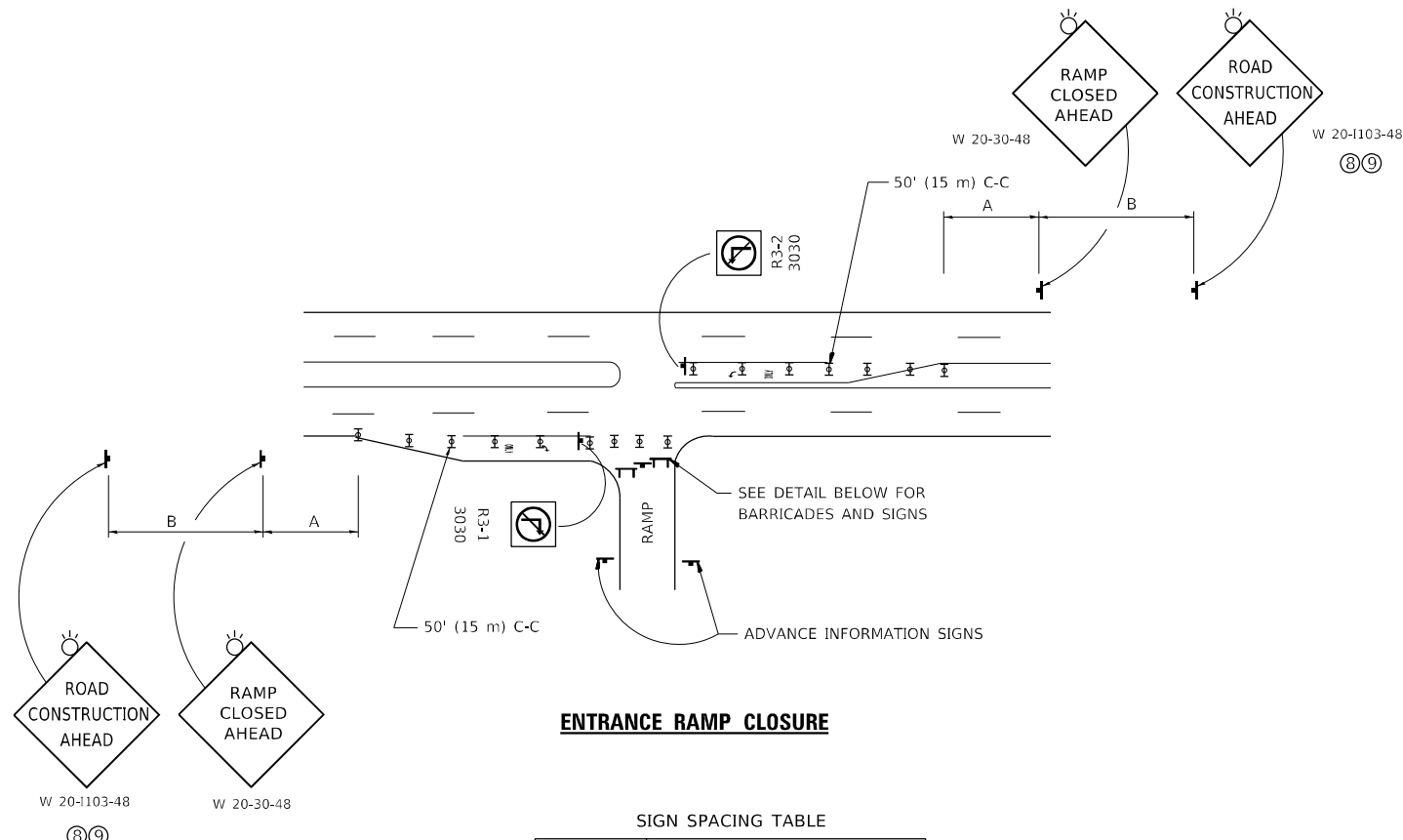
USER NAME = Jacob.Roth	DESIGNED -	REVISED -
PLOT SCALE = 100,0000' / in.	DRAWN -	REVISED -
PLOT DATE = 10/21/2022	CHECKED -	REVISED -
	DATE -	REVISED -

STATE OF ILLINOIS  
DEPARTMENT OF TRANSPORTATION

LOCATION 4: BEARING DETAILS  
I-57 AT I-80 INTERCHANGE (SN 016-2027)

SCALE: SHEET 4 OF 4 SHEETS STA. TO STA.

F.A.I. RTE.	SECTION	COUNTY	TOTAL SHEETS	SHEET NO.
57	FAI 57 22 BP	COOK	24	21
CONTRACT NO. 62U15				
ILLINOIS FED. AID PROJECT				

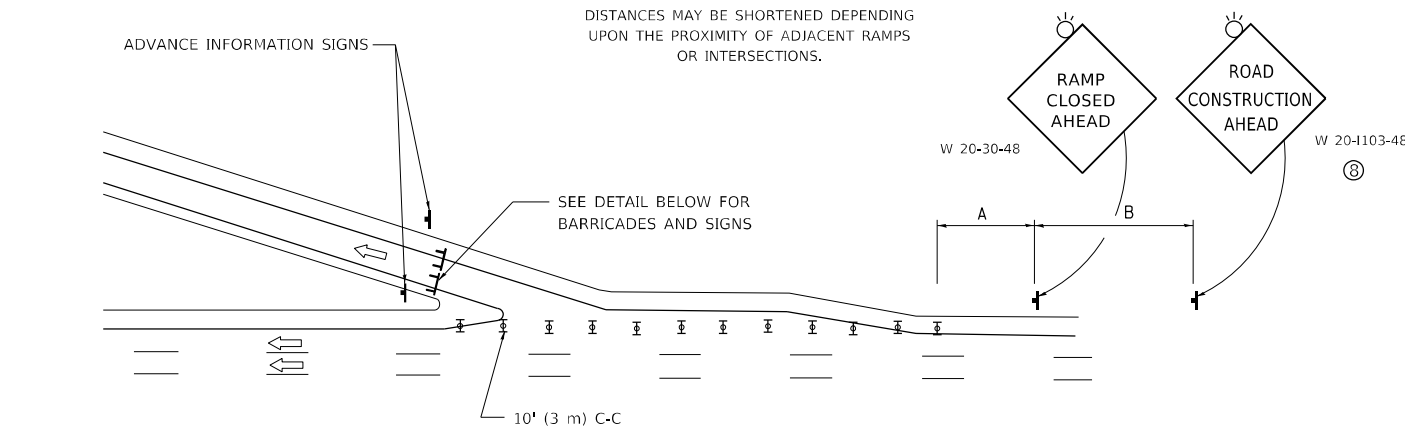


**ENTRANCE RAMP CLOSURE**

SIGN SPACING TABLE

FACILITY	DISTANCE BETWEEN SIGNS	
	A	B
EXPRESSWAY >24 HOURS	1000' (300 m)	1500' (450 m)
EXPRESSWAY ≤24 HOURS	500' (150 m)	500' (150 m)
ARTERIAL 55 MPH	500' (150 m)	500' (150 m)
ARTERIAL 50-45 MPH	350' (100 m)	350' (100 m)
ARTERIAL <45 MPH	200' (60 m)	200' (60 m)

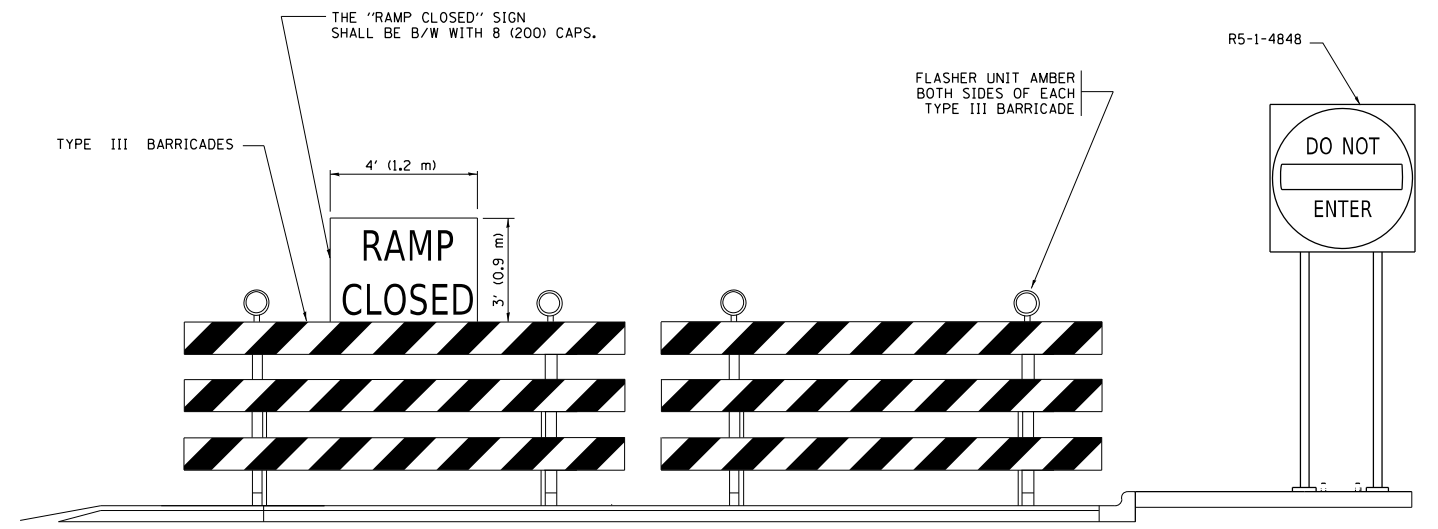
DISTANCES MAY BE SHORTENED DEPENDING UPON THE PROXIMITY OF ADJACENT RAMPS OR INTERSECTIONS.



**EXIT RAMP CLOSURE**

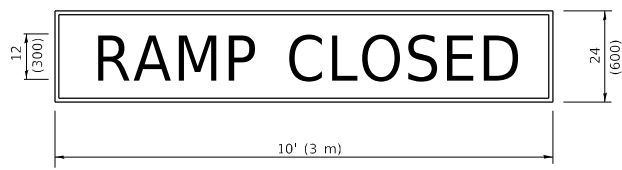
**SYMBOLS**

- ▬ TYPE II BARRICADE OR DRUM
- ▬ TYPE III BARRICADE WITH 2 FLASHING LIGHTS



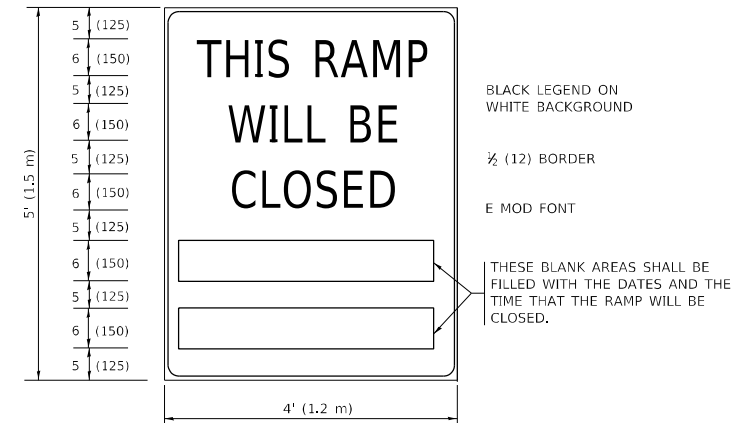
**DETAIL FOR REQUIRED BARRICADES & SIGNS**

**RAMP CLOSURE ADVANCE WARNING SIGN**



BLACK LEGEND ON ORANGE BACKGROUND MOUNTED DIAGONALLY  
E MOD FONT  
1 (25) BORDER  
THESE SIGNS ARE REQUIRED ON ALL THE EXIT GUIDE SIGNS FOR EXIT RAMPS THAT WILL BE CLOSED FOR MORE THAN FOUR (4) CONSECUTIVE DAYS.

**RAMP CLOSURE ADVANCE INFORMATION SIGN**



BLACK LEGEND ON WHITE BACKGROUND  
1/2" (12) BORDER  
E MOD FONT  
THESE BLANK AREAS SHALL BE FILLED WITH THE DATES AND THE TIME THAT THE RAMP WILL BE CLOSED.

THESE SIGNS ARE REQUIRED ON BOTH SIDES OF THE RAMP, MINIMUM OF 1 WEEK IN ADVANCE OF THE CLOSURE.  
THESE SIGNS SHALL BE FABRICATED AND PAID FOR ACCORDING TO THE TEMPORARY INFORMATION SIGNING SPECIAL PROVISION

**GENERAL NOTES:**

- ① CONES MAY BE SUBSTITUTED FOR DRUMS OR TYPE II BARRICADES DURING DAY OPERATIONS. CONES SHALL BE A MINIMUM OF 28 (700) HIGH.
- ② VERTICAL BARRICADES SHALL NOT BE USED FOR RAMP CLOSURES.
- ③ A FLAGGER SHALL BE POSITIONED AT EACH CLOSED RAMP THAT IS OPEN TO CONSTRUCTION VEHICLES, PRECEDED BY A W20-7 FLAGGER WARNING SIGN.
- ④ ALL ROUTE MARKERS AND TRAILBLAZER ASSEMBLIES WHICH DIRECT MOTORISTS TO A CLOSED ENTRANCE RAMP SHALL BE COVERED WHEN THE RAMP IS CLOSED FOR MORE THAN FOUR (4) DAYS.
- ⑤ THE SIGNING AND BARRICADING WHICH IS REQUIRED BY THIS DETAIL SHALL BE INCLUDED IN THE COST OF TRAFFIC CONTROL AND PROTECTION (EXPRESSWAYS).
- ⑥ AUTHORIZATION FROM THE DISTRICT'S BUREAU OF TRAFFIC IS REQUIRED FOR ALL RAMP CLOSURES.
- ⑦ THE RAMP CLOSURE ADVANCE INFORMATION SIGNS SHALL BE ERECTED IF THE CLOSURE TIME EXCEEDS TWENTY-FOUR (24) HOURS. ADDITIONAL ADVANCE WARNING SIGNS ON EXIT GUIDE SIGNING WILL BE REQUIRED FOR EXIT RAMP CLOSURES THAT EXCEED FOUR (4) DAYS IN LENGTH.
- ⑧ ROAD CONSTRUCTION AHEAD SIGNS MAY BE OMITTED WHEN THIS DETAIL IS USED IN CONJUNCTION WITH OTHER TRAFFIC CONTROL THAT ALREADY INCLUDES A ROAD CONSTRUCTION AHEAD SIGN.
- ⑨ ARTERIAL ROAD CONSTRUCTION AHEAD SIGNS SHALL BE INSTALLED ON THE LEFT SIDE OF TRAFFIC IF THE MEDIAN IS MORE THAN 10 FT WIDE.

ALL DIMENSIONS ARE IN INCHES (MILLIMETERS) UNLESS OTHERWISE SHOWN.

MODEL: Default  
FILE: \\nafe\p\project\aw\bea\paw.com\PIV\DOT\Documents\DOT\Office\Dir\drct\_11\project\101323\CADD\DATA\Design\BRTS\Std.dgn

USER NAME = Jacob.Roth	DESIGNED - D.W.S.	REVISED - S.P.B._01-07
DRAWN -	REVISED - S.P.B._12-09	
PLOT SCALE = 100,0000' / in.	CHECKED -	REVISED - M.D._06-13
PLOT DATE = 10/21/2022	DATE - 02-83	REVISED - M.D._01-18

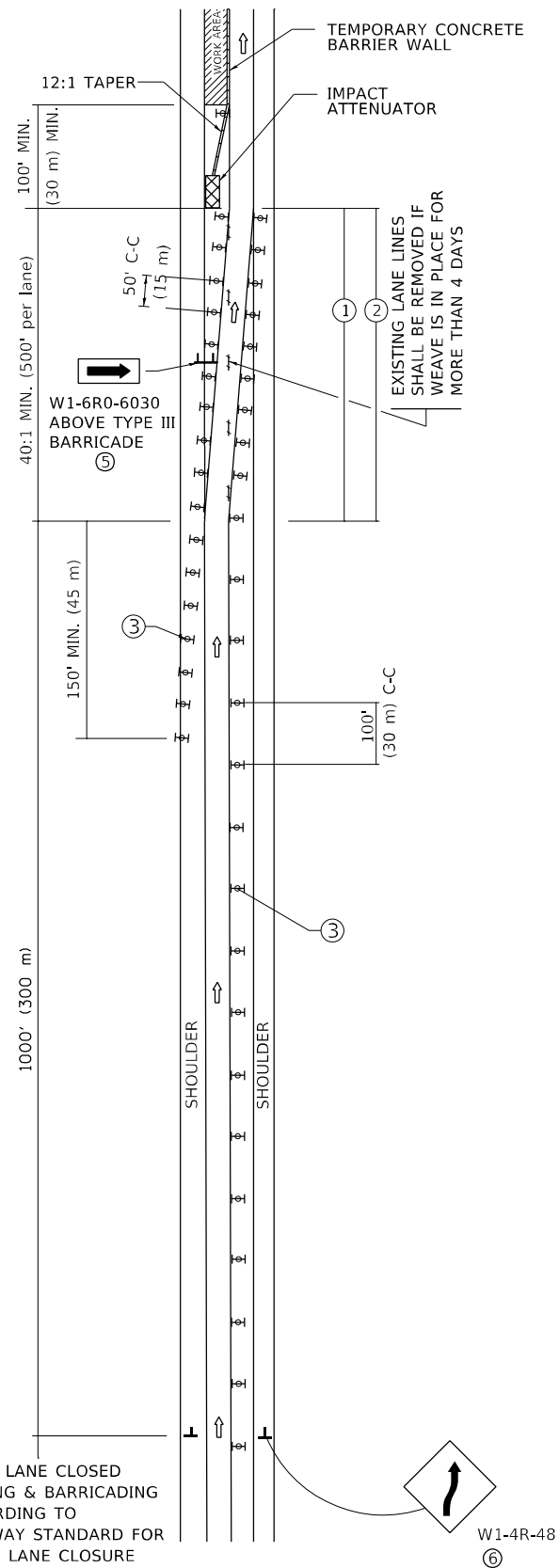
**STATE OF ILLINOIS  
DEPARTMENT OF TRANSPORTATION**

**ENTRANCE\_AND\_EXIT\_RAMP  
CLOSURE\_DETAILS**

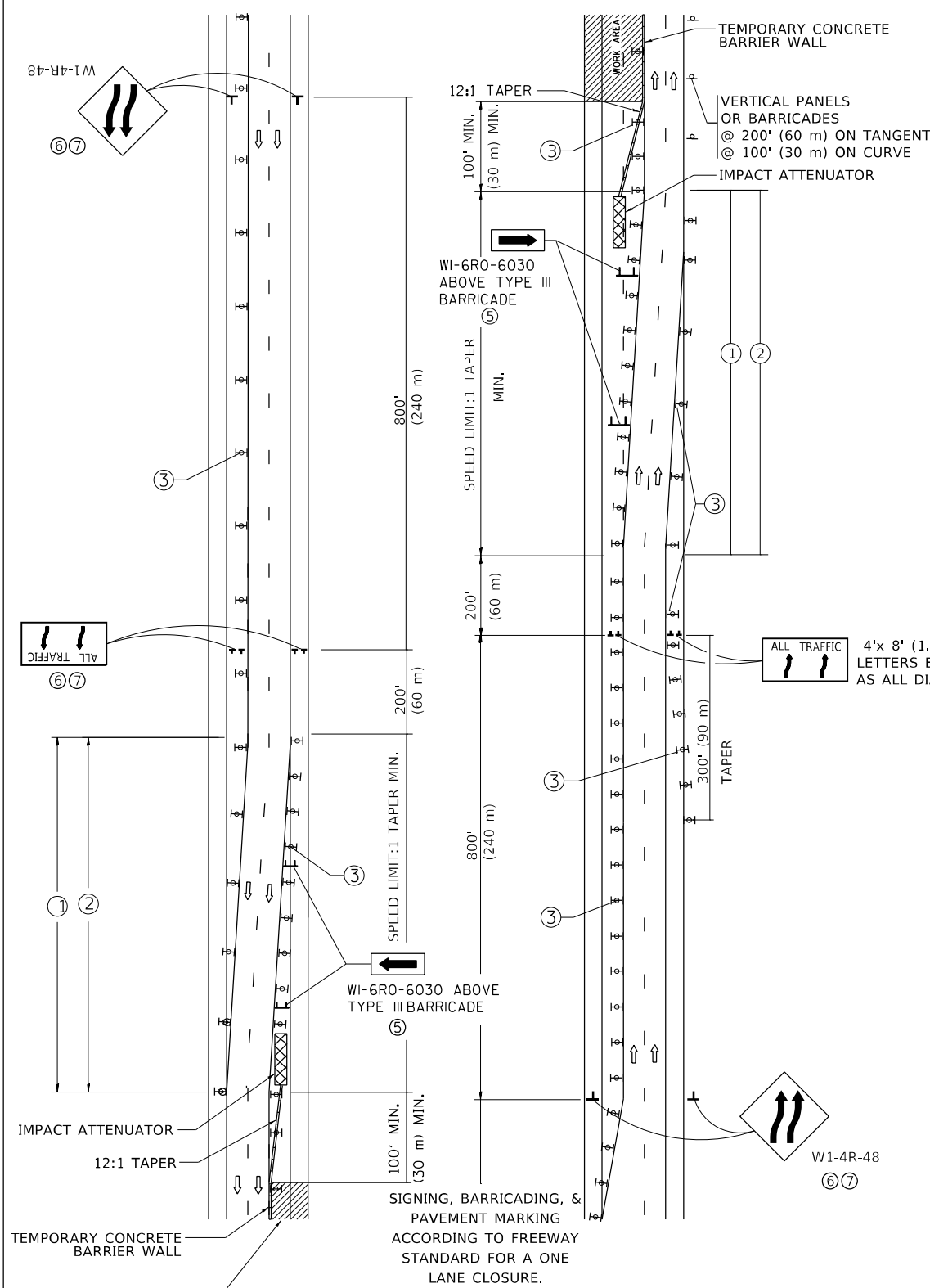
SCALE: NONE SHEET 1 OF 1 SHEETS STA. TO STA.

F.A.I. RTE.	SECTION	COUNTY	TOTAL SHEETS	SHEET NO.
57	FAI 57 22 BP	COOK	24	22
<b>TC-08</b>		CONTRACT NO. 62U15		
ILLINOIS		FED. AID PROJECT		

# SINGLE LANE WEAVE



# MULTI-LANE WEAVE



### GENERAL NOTES:

- ① EXISTING CONFLICTING PAVEMENT MARKING LINES SHALL BE REMOVED. PAVEMENT MARKING REMOVAL SHALL NOT BE REQUIRED FOR SINGLE LANE WEAVES UNDER 4 DAYS IN DURATION.
- ② CONTINUOUS REFLECTIVE TEMPORARY PAVEMENT MARKING TAPE SHALL BE PLACED THROUGHOUT THE TAPER AND FOR 300' (90 m) ALONG SIDE THE WORK AREA WHERE THE CLOSURE TIME IS GREATER THAN FOURTEEN DAYS. THE LEFT EDGE LINE SHALL BE YELLOW AND THE RIGHT EDGE LINE SHALL BE WHITE. FOR MULTI-LANE WEAVES LANE LINES SHALL BE 5 INCH, 10'-30' (3 m-9 m) SKIP DASH, WHITE.
- ③ PLASTIC DRUMS WITH STEADY BURN LIGHTS AT 50' (15 m) C-C SPACING IN TAPERS AND 100' (30 m) C-C SPACING IN TANGENTS.
- ④ ALL SIGNS SHALL BE POST MOUNTED IF THE CLOSURE TIME EXCEEDS FOUR DAYS.
- ⑤ TYPE III BARRICADES MAY BE OMITTED FOR SINGLE-LANE WEAVES UNDER 24-HOURS IN DURATION. W1-6 SIGNS WILL STILL BE REQUIRED. IF THE WIDTH OF OFFSET IS LESS THAN 6' THEN THE TYPE III BARRICADE WITH ATTACHED ARROW SIGN PANEL CAN BE ELIMINATED IN THE TAPER AREAS.
- ⑥ WHEN THE LENGTH OF THE SHIFTED SEGMENT (DISTANCE BETWEEN WEAVE POINTS) IS LESS THAN 1500', DOUBLE REVERSE CURVE SIGNS (W24-1) SHOULD BE USED INSTEAD OF THE REVERSE CURVE (W1-4) SIGNS. ARROWS ON THE 4'X8' "ALL TRAFFIC" SIGNS SHALL BE THE SAME SHAPE.
- ⑦ THE NUMBER OF ARROWS ON THESE SIGNS SHALL MATCH THE NUMBER OF LANES OPEN TO TRAFFIC.

### SYMBOLS

- DIRECTION OF TRAFFIC
- WORK AREA
- SIGN ON PORTABLE OR PERMANENT SUPPORT
- TYPE II BARRICADE OR DRUM WITH MONO-DIRECTIONAL STEADY BURNING LIGHT
- TEMPORARY CONCRETE BARRIER WALL
- IMPACT ATTENUATOR
- W1-4R-48
- W24-1-48

ALL DIMENSIONS ARE IN INCHES (MILLIMETERS) UNLESS OTHERWISE SHOWN

MODEL: Default  
FILE NAME: p:\ultra-cw-beadefy.com\PIV\DOT\Documents\DOT Office\Dist\dct\_11\project\101323\CADD\data\Design\BRT5St.dgn

USER NAME = Jacob.Roth	DESIGNED - D.W.S.	REVISED - J.A.F. 02-06
	DRAWN -	REVISED - S.P.B. 01-07
PLOT SCALE = 100,0000' / in.	CHECKED -	REVISED - S.P.B. 12-09
PLOT DATE = 10/21/2022	DATE - 02-87	REVISED - M.D. 06-13

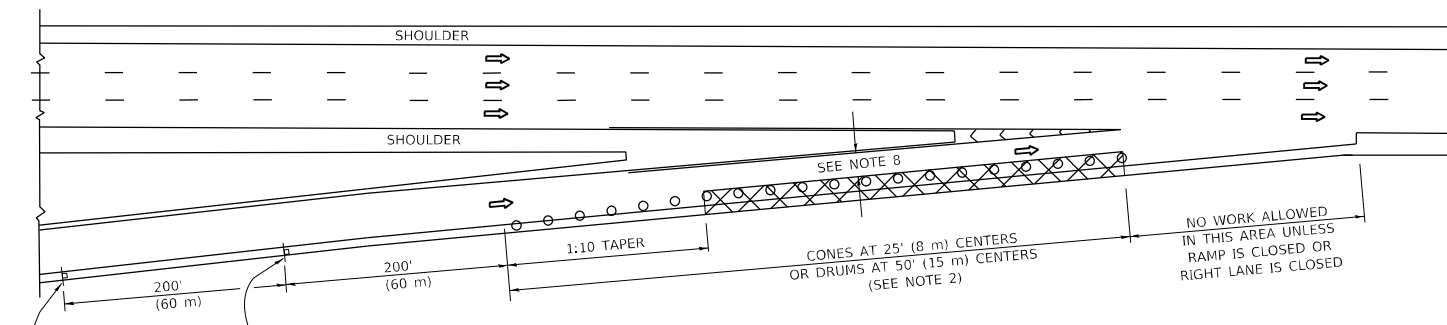
**STATE OF ILLINOIS  
DEPARTMENT OF TRANSPORTATION**

**TRAFFIC CONTROL DETAILS FOR  
FREEWAY SINGLE & MULTI-LANE WEAVE**

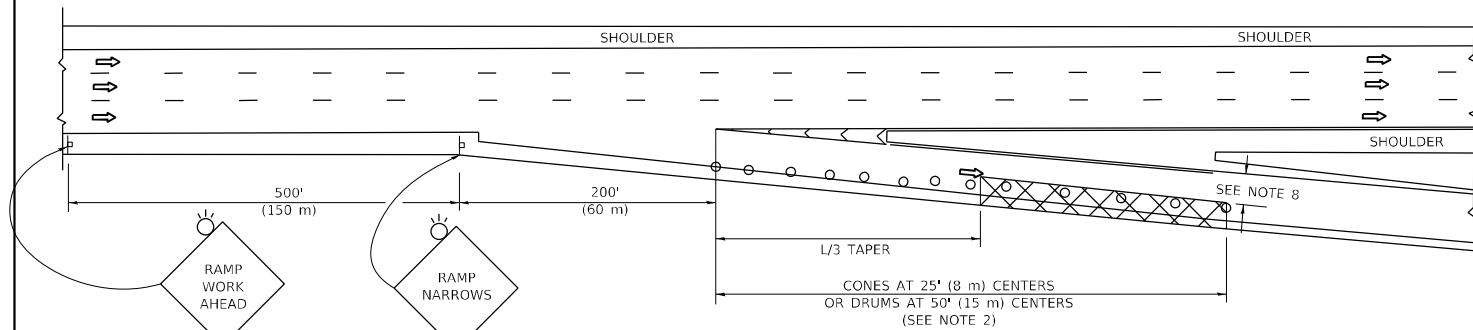
SCALE: NONE SHEET 1 OF 1 SHEETS STA. TO STA.

F.A.I. RTE.	SECTION	COUNTY	TOTAL SHEETS	SHEET NO.
57	FAI 57 22 BP	COOK	24	23
TC-09		CONTRACT NO. 62U15		
ILLINOIS FED. AID PROJECT				

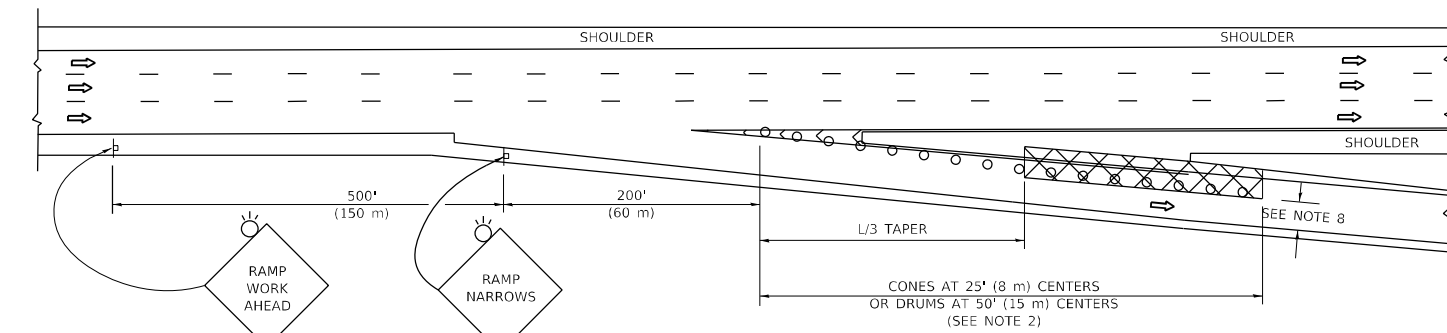
**PARTIAL RAMP CLOSURE DETAILS**



**TYPICAL ENTRANCE RAMP**



**TYPICAL EXIT RAMP**



**TYPICAL EXIT RAMP**

**SYMBOLS**

- ACTIVE WORK AREA
- SIGN ON PORTABLE OR PERMANENT SUPPORT
- FLAGGER WITH CONTROL SIGN
- TYPE II BARRICADE OR DRUM
- CONE, DRUM OR BARRICADE
- IMPACT ATTENUATOR OF TYPE AND TEST LEVEL SPECIFIED

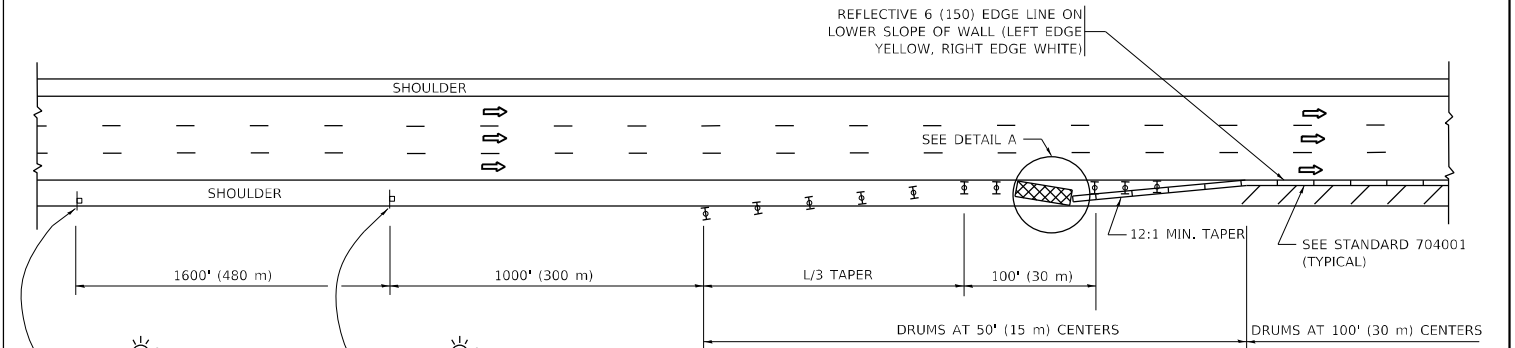
**GENERAL NOTES:**

- THE "L" DISTANCE EQUALS:  

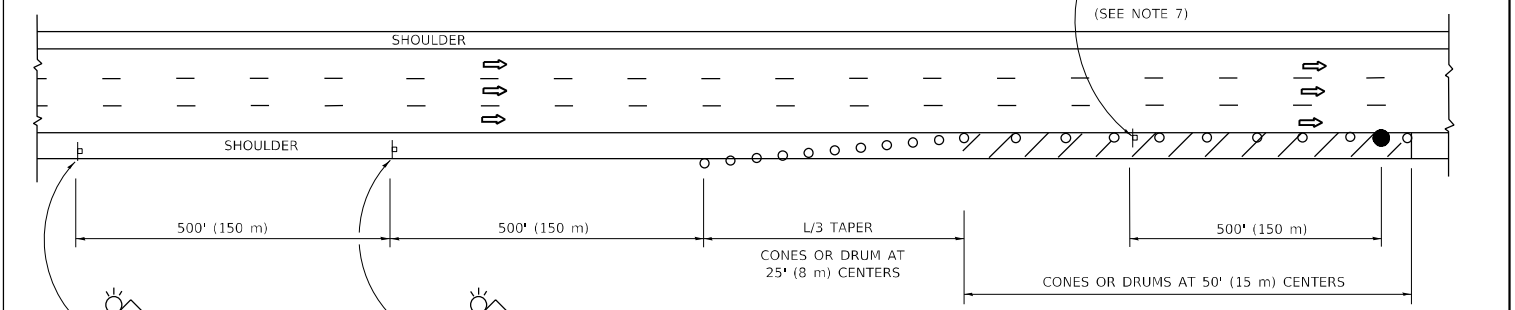
$L = \frac{W \cdot S}{S - V}$	<b>FORMULAS</b>
45 mph (80 km/h) OR GREATER:	METRIC ENGLISH
$L = 0.65(W/S)$	$L = (W/S)$

W = WIDTH OF OFFSET IN FEET (METERS)  
 S = NORMAL POSTED SPEED MPH (KM/H)
- TYPE II BARRICADES OR DRUMS ARE REQUIRED FOR ALL NIGHTTIME CLOSURES. TYPE II BARRICADES OR DRUMS WITH MONODIRECTIONAL STEADY BURN LIGHTS ARE REQUIRED FOR DELINEATING OBSTACLES, EXCAVATIONS, OR HAZARDS EXCEEDING 100 FT (30m) IN LENGTH AT NIGHT.
- ALL SIGNS SHALL BE POST MOUNTED IF THE CLOSURE TIME EXCEEDS FOUR DAYS.
- FLASHING LIGHTS SHALL BE USED DURING THE HOURS OF DARKNESS AND SHALL BE INSTALLED ABOVE THE FIRST TWO SETS OF SIGNS.

**SHOULDER CLOSURE DETAILS**

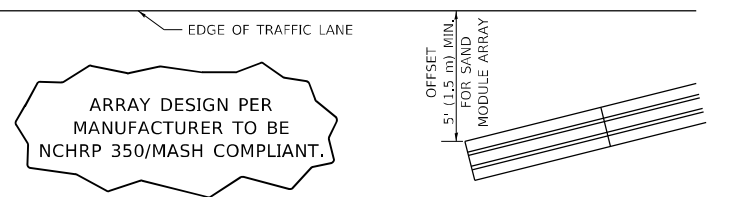


**PERMANENT SHOULDER CLOSURE**



**TEMPORARY SHOULDER CLOSURE**

THIS DETAIL IS USED WHERE:  
 1. VEHICLES, EQUIPMENT, WORKERS OR THEIR ACTIVITIES ENCR OACH IN AN AREA CLOSER THAN 15' (4.5 m) TO THE EDGE OF PAVEMENT FOR A PERIOD IN EXCESS OF 15 MINUTES.



**DETAIL "A"  
 IMPACT ATTENUATOR, TEMPORARY  
 (SEE NOTE 5)**

- THE IMPACT ATTENUATOR, TEMPORARY IS NOT REQUIRED WHEN THE TEMPORARY CONCRETE BARRIER WALL IS PROTECTED BY OR IS TIED INTO THE EXISTING GUARDRAIL. IF OFFSET IS LESS THAN 5 FEET USE NARROW USE TYPE DEVICE TO MEET NCHRP350/MASH.
- AUTHORIZATION FROM THE DISTRICT'S BUREAU OF TRAFFIC IS REQUIRED FOR ALL FREEWAY CLOSURES.
- THE FLAGGER AND FLAGGER SIGN ARE REQUIRED AT THE ABOVE WORK SITES WHEN:
  - FOUR OR MORE WORK VEHICLES ENTER THE TRAFFIC LANES IN A ONE HOUR PERIOD.
  - THE WORK AVTIVITY REQUIRES FREQUENT ENCR OACHMENT INTO THE LANE OPEN TO TRAFFIC.
 THE FLAGGER SHALL BE STATIONED APPROXIMATELY 100' (30 m) TO 200' (60 m) IN ADVANCE OF THE WORKERS.
- 12' MIN. WIDTH TANGENT SECTION  
 16' MIN. WIDTH CURVE SECTION.
- TEMPORARY SHOULDER AND NON-SYSTEM INTERCHANGE PARTIAL RAMP CLOSURES ARE ALLOWED WEEKDAYS BETWEEN 9:00 A.M. AND 3:00 P.M. AND BETWEEN 7:00 P.M. AND 5:00 A.M. OR AS APPROVED BY THE EXPRESSWAY TRAFFIC OPERATIONS ENGINEER. PERMANENT SHOULDER AND PARTIAL RAMP CLOSURES WILL ONLY BE PERMITTED IF CALLED FOR IN THE PLANS OR AS APPROVED BY THE EXPRESSWAY OPERATIONS ENGINEER.

ALL DIMENSIONS ARE IN INCHES (MILLIMETERS) UNLESS OTHERWISE SHOWN.

MODEL: Default  
 FILE NAME: \\pilot\dot\documents\1001\office\dir\dot\1\project\101323\Cadd\data\Design\BRTS\dot\...

USER NAME = Jacob,Roth	DESIGNED -	REVISED - S.P.B. 12-09
	DRAWN - D,W,S.	REVISED - M,D. 06-13
PLOT SCALE = 100,0000 ' / in.	CHECKED -	REVISED - M,D. 01-18
PLOT DATE = 10/21/2022	DATE - 11-96	REVISED - M,D. 10-20

**STATE OF ILLINOIS  
 DEPARTMENT OF TRANSPORTATION**

**TRAFFIC CONTROL DETAILS FOR FREEWAY  
 SHOULDER CLOSURES AND PARTIAL RAMP CLOSURES**

SCALE: NONE SHEET 1 OF 1 SHEETS STA. TO STA.

F.A.I. RTE.	SECTION	COUNTY	TOTAL SHEETS	SHEET NO.
57	FAI 57 22 BP	COOK	24	24
<b>TC-17</b>			CONTRACT NO. 62U15	
ILLINOIS FED. AID PROJECT				