

SUMMARY OF QUANTITIES

SP. PROV.	ITEM #	PAY ITEMS	UNIT	ITEP FUNDS - CONSTRUCTION CODE 0028 (80% FEDERAL / 20% LOCAL)	ITEP FUNDS LIGHTING - CONSTRUCTION CODE 0028 (50% FEDERAL / 50% LOCAL)
Δ	20100110	TREE REMOVAL (6 TO 15 UNITS DIAMETER)	UNIT	9	0
	20200100	EARTH EXCAVATION	CU YD	4010	0
	20400800	FURNISHED EXCAVATION	CU YD	2725	0
	21101615	TOPSOIL FURNISH AND PLACE, 4"	SQ YD	21257	0
Δ	25000110	SEEDING, CLASS 1A	ACRE	3.23	0
Δ	25000312	SEEDING, CLASS 4A	ACRE	1.38	0
Δ	25000322	SEEDING, CLASS 5A	ACRE	1.38	0
Δ	25000400	NITROGEN FERTILIZER NUTRIENT	POUND	393	0
Δ	25000500	PHOSPHORUS FERTILIZER NUTRIENT	POUND	393	0
Δ	25000600	POTASSIUM FERTILIZER NUTRIENT	POUND	393	0
Δ	25100115	MULCH, METHOD 2	ACRE	4.37	0
Δ	25100630	EROSION CONTROL BLANKET	SQ YD	19060	0
Δ	25100635	HEAVY DUTY EROSION CONTROL BLANKET	SQ YD	2196	0
	28000400	PERIMETER EROSION BARRIER	FOOT	6394	0
	28000500	INLET AND PIPE PROTECTION	EACH	2	0
	28100101	STONE RIPRAP, CLASS A1	SQ YD	1204	0
	28200200	FILTER FABRIC	SQ YD	2810	0
	35101400	AGGREGATE BASE COURSE, TYPE B	TON	2469	0
	40600275	BITUMINOUS MATERIALS (PRIME COAT)	POUND	9046	0
	40600290	BITUMINOUS MATERIALS (TACK COAT)	POUND	67	0
	40604050	HOT-MIX ASPHALT SURFACE COURSE, MIX "C", IL 9.5 N50	TON	666	0
	42000101	PORTLAND CEMENT CONCRETE PAVEMENT 6" (JOINTED)	SQ YD	490	0
	42300300	PORTLAND CEMENT CONCRETE DRIVEWAY PAVEMENT, 7 INCH	SQ YD	244	0
	42400100	PORTLAND CEMENT CONCRETE SIDEWALK 4 INCH	SQ FOOT	3615	0
	42400800	DETECTABLE WARNINGS	SQ FOOT	92	0
	44000200	DRIVEWAY PAVEMENT REMOVAL	SQ YD	230	0
	44000500	COMBINATION CURB AND GUTTER REMOVAL	FOOT	398	0
	44000600	SIDEWALK REMOVAL	SQ FOOT	2494	0
	44200050	WELDED WIRE REINFORCEMENT	SQ YD	663	0
	44201684	CLASS D PATCHES, TYPE IV, 3 INCH	SQ YD	148	0
	50200100	STRUCTURE EXCAVATION	CU YD	36.2	0
	50300225	CONCRETE STRUCTURES	CU YD	47	0
	50500505	STUD SHEAR CONNECTORS	EACH	227	0
	50800105	REINFORCEMENT BARS	POUND	5710	0
	51500100	NAME PLATES	EACH	3	0
*	52200015	PERMANENT SHEET PILING	SQ FOOT	12032	0

Δ SPECIALTY ITEMS

SP. PROV.	ITEM #	PAY ITEMS	UNIT	ITEP FUNDS - CONSTRUCTION CODE 0028 (80% FEDERAL / 20% LOCAL)	ITEP FUNDS LIGHTING - CONSTRUCTION CODE 0028 (50% FEDERAL / 50% LOCAL)
	52200105	FURNISHING SOLDER PILES (W SECTION)	FOOT	792	0
	52200200	DRILLING AND SETTING SOLDER PILES (IN SOIL)	CU FOOT	3895	0
	52200250	UNTREATED TIMBER LAGGING	SQ FOOT	917	0
*	52200800	SEGMENTAL CONCRETE BLOCK WALL	SQ FT	355	0
	59100100	GEOCOMPOSITE WALL DRAIN	SQ YD	50	0
	60146304	PIPE UNDERDRAINS FOR STRUCTURES 4"	FOOT	129	0
	60108106	PIPE UNDERDRAINS, TYPE 1, 6"	FOOT	624	0
	60108206	PIPE UNDERDRAINS, TYPE 2, 6"	FOOT	406	0
	60604400	COMBINATION CONCRETE CURB AND GUTTER, TYPE B-6.18	FOOT	470	0
Δ	* 66900200	NON-SPECIAL WASTE DISPOSAL	CU YD	951	0
Δ	* 66900530	SOIL DISPOSAL ANALYSIS	EACH	6	0
Δ	* 66901001	REGULATED SUBSTANCES PRE-CONSTRUCTION PLAN	L SUM	1	0
Δ	* 66901003	REGULATED SUBSTANCES FINAL CONSTRUCTION REPORT	L SUM	1	0
	* 66901005	ENGINEERED BARRIER	SQ YD	247	0
Δ	* 66901006	REGULATED SUBSTANCES MONITORING	CAL DAY	10	0
	67100100	MOBILIZATION	L SUM	1	0
Δ	72000100	SIGN PANEL - TYPE 1	SQ FOOT	11.5	0
Δ	72900100	METAL POST - TYPE A	FOOT	30	0
Δ	78000100	THERMOPLASTIC PAVEMENT MARKING - LETTERS AND SYMBOLS	SQ FOOT	19	0
Δ	78000400	THERMOPLASTIC PAVEMENT MARKING - LINE 6"	FOOT	254	0
Δ	78000600	THERMOPLASTIC PAVEMENT MARKING - LINE 12"	FOOT	311	0
Δ	78000650	THERMOPLASTIC PAVEMENT MARKING - LINE 24"	FOOT	10	0
Δ	80400100	ELECTRICAL SERVICE INSTALLATION	EACH	0	2
Δ	81028730	UNDERGROUND CONDUIT, COILABLE NONMETALLIC CONDUIT, 1 1/4" DIA.	FOOT	0	2786
Δ	81028750	UNDERGROUND CONDUIT, COILABLE NONMETALLIC CONDUIT, 2" DIA.	FOOT	0	250
Δ	81028760	UNDERGROUND CONDUIT, COILABLE NONMETALLIC CONDUIT, 2 1/2" DIA.	FOOT	0	200
Δ	81100100	CONDUIT ATTACHED TO STRUCTURE, 1/2" DIA., GALVANIZED STEEL	FOOT	0	356
Δ	81400100	HANDHOLE	EACH	0	35
Δ	81702145	ELECTRIC CABLE IN CONDUIT, 600V (XLP-TYPE USE) 1/C NO.3	FOOT	0	250
Δ	81702420	ELECTRIC CABLE IN CONDUIT, 600V (XLP-TYPE USE) 3-1/C NO.8	FOOT	0	12698

Δ SPECIALTY ITEMS

FEHR GRAHAM

ENGINEERING & ENVIRONMENTAL

ILLINOIS DESIGN FIRM NO. 184-003525

ILLINOIS
IOWA
WISCONSIN

OWNER/DEVELOPER:

CITY OF DIXON
121 WEST 2ND STREET
DIXON, IL 61016

PROJECT AND LOCATION:

SHARED USE PATH EXTENSION
SEC 17-00178-00-BT
PROJECT NO. MXY3(094)
JOB C-92-024-19

DRAWN BY: MS
APPROVED BY: JS
DATE: 10/19/22
SCALE: AS NOTED

REVISIONS

REV. NO.	DESCRIPTION	DATE
1	ADDENDUM 1	01/09/23

DRAWING:

SUMMARY OF QUANTITIES

SET TYPE: FOR BID SET

G:\CD\17-0678\Plans\17-0678 - PLANS 2.dwg SUMMARY(1)

JOB NUMBER:

17-067B

SHEET NUMBER:

C5.0

SUMMARY OF QUANTITIES

SP. PROV.	ITEM #	PAY ITEMS	UNIT	ITEP FUNDS - CONSTRUCTION CODE 0028 (80% FEDERAL / 20% LOCAL)	ITEP FUNDS LIGHTING - CONSTRUCTION CODE 0028 (50% FEDERAL / 50% LOCAL)
Δ	81702450	ELECTRIC CABLE IN CONDUIT, 600V (XLP-TYPE USE) 3-1/C NO.10	FOOT	0	1068
Δ	87100105	FIBER OPTIC CABLE IN CONDUIT, NO. 62.5/125, 4F	FOOT	0	3856
Δ	A2000090	TREE, ACER X FREEMANII ARMSTRONG (ARMSTRONG FREEMAN MAPLE), 3" CALIPER, BALLED & BURLAPPED	EACH	6	0
Δ	A2007122	TREE, QUERCUS RUBRA (RED OAK), 3" CALIPER, BALLED & BURLAPPED	EACH	1	0
Δ	B2006266	TREE, SYRINGA RETICULATA (JAPANESE TREE LILAC), 6' HEIGHT, CLUMP FORM, BALLED AND BURLAPPED	EACH	6	0
Δ	C2000436	SHRUB, ARONIA ARBUTIFOLIA BRILLIANTISSIMA (BRILLIANT RED CHOKEBERRY), 3' HEIGHT, BALLED AND BURLAPPED	EACH	24	0
Δ	C2001636	SHRUB, CORNUS SERICEA (REDSIER DOGWOOD), 3' HEIGHT, BALLED AND BURLAPPED	EACH	62	0
Δ	C2005818	SHRUB, RHUS AROMATICA GRO-LOW (GRO-LOW FRAGRANT SUMAC), 18" WIDTH, BALLED AND BURLAPPED	EACH	46	0
Δ	C2011736	SHRUB, VIBURNUM DENTATUM (ARROWWOOD VIBURNUM), 3' HEIGHT, BALLED AND BURLAPPED	EACH	18	0
Δ	C2012748	SHRUB, VIBURNUM PRUNIFOLIUM (BLACKHAW VIBURNUM), 4' HEIGHT, BALLED AND BURLAPPED	EACH	8	0
Δ	D2001460	EVERGREEN, JUNIPERUS SCOPULORUM WICHITA BLUE (WICHITA BLUE JUNIPER), 5' HEIGHT, BALLED AND BURLAPPED	EACH	8	0
Δ	D2001772	EVERGREEN, PICEA ABIES (NORWAY SPRUCE), 6' HEIGHT, BALLED AND BURLAPPED	EACH	9	0
Δ	D2002984	EVERGREEN, PINUS STROBUS (EASTERN WHITE PINE), 7' HEIGHT, BALLED AND BURLAPPED	EACH	6	0
Δ	D2C00724	EVERGREEN, JUNIPERUS CHINENSIS VAR. SARGENTII VIVIDIS (GREEN SARGENT JUNIPER), 2' WIDTH, CONTAINER	EACH	50	0
Δ	D2C00918	EVERGREEN, JUNIPERUS HORIZONTALIS HUGHES (HUGHES CREEPING JUNIPER), 18" WIDTH, CONTAINER	EACH	28	0
Δ	C2000524	SHRUB, ARONIA MELANOCARPA IROQUOIS BEAUTY (IROQUOIS BEAUTY BLACK CHOKEBERRY), 2' HEIGHT, CONTAINER	EACH	32	0
Δ	C2002324	SHRUB, DIERVILLA LONICERA (BUSH HONEYSUCKLE), 2' HEIGHT, BALLED AND BURLAPPED	EACH	92	0
Δ	C2C041G5	SHRUB, ITEA VIRGINICA LITTLE HENRY (LITL HENRY VIRGINIA SWEETSPIRE), CONTAINER GROWN, 5-GALLON	EACH	20	0
Δ	C2C09784	SHRUB, SPIREA BETULIFOLIA TOR (TOR BIRCHLEAF SPIREA), 2' HEIGHT, CONTAINER	EACH	27	0
Δ	C2C15761	SHRUB, SPIREA JAPONICA NEON FLASH (NEON FLASH JAPANESE SPIREA), 18" HEIGHT, 5-GALLON CONTAINER	EACH	53	0
Δ	K0012990	PERENNIAL PLANTS, ORNAMENTAL TYPE, GALLON POT	UNIT	0.32	0
Δ	* K1005481	SHREDDED BARK MULCH 3"	SQ YD	2835	0
	* X0100003	CLEARING AND GRUBBING	SQ YD	8294	0
Δ	* X0322920	COMMUNICATIONS CABINET AND EQUIPMENT	EACH	0	1
	* X0323455	ADJUST MONITORING WELLS	EACH	1	0
	* X0326806	WASHOUT BASIN	L SUM	1	0
	* X0327997	TRASH RECEPTACLES	EACH	2	0
Δ	* X1400088	POWER PEDESTALS	EACH	0	2
Δ	* X1400210	LIGHT POLE, SPECIAL, 12'	EACH	0	35
Δ	* X1400238	LUMINAIRE, LED, SPECIAL	EACH	0	35
Δ	* X2503110	MOWING (SPECIAL)	ACRE	42.8	0
	* X5012502	CONCRETE REMOVAL (SPECIAL)	CU YD	125	0
Δ	* X5091725	BICYCLE RAILING, SPECIAL	FOOT	470	0
	* X5800110	MEMBRANE WATERPROOFING (SPECIAL)	SQ FOOT	7523	0
	* X7010216	TRAFFIC CONTROL AND PROTECTION (SPECIAL)	L SUM	1	0
Δ	* X8130110	JUNCTION BOX (SPECIAL)	EACH	0	10
Δ	* X8250500	LIGHTING UNIT COMPLETE, SPECIAL	EACH	0	42
Δ	* X8360120	LIGHT POLE FOUNDATION, SPECIAL	EACH	0	35
	* Z0003850	BENCHES	EACH	4	0
Δ	* Z0077900	WOOD POST AND RAIL FENCE	FOOT	2950	0
	* XX008287	BOARDWALK STRUCTURE	SQ FOOT	4576	0
Δ	* XX008921	EMERGENCY CALL BOXES	EACH	7	0
				CONSTRUCTION CODE 0042	
	* Z0076600	TRAINEES	HOURL	1000	0
	* Z0076604	TRAINEES TRAINING PROGRAM GRADUATE	HOURL	1000	0

Δ SPECIALTY ITEMS



ILLINOIS
IOWA
WISCONSIN

OWNER/DEVELOPER:
CITY OF DIXON
121 WEST 2ND STREET
DIXON, IL 61016

PROJECT AND LOCATION:
SHARED USE PATH EXTENSION
SEC 17-00178-00-BT
PROJECT NO. MXY3(094)
JOB C-92-024-19

DRAWN BY: MS
APPROVED BY: JS
DATE: 10/19/22
SCALE: AS NOTED

REVISIONS		
REV. NO.	DESCRIPTION	DATE
1	ADDENDUM 1	01/09/23

DRAWING:
SUMMARY OF QUANTITIES
SET TYPE: FOR BID SET
G:\CSD\17-0678\Plans\17-0678 - PLANS 2.dwg SUMMARY(2)

JOB NUMBER:
17-067B
SHEET NUMBER:
C6.0

SCHEDULE OF QUANTITIES

20100110 - TREE REMOVAL (6 TO 15 UNITS DIAMTER) (UNIT)	
SEGMENT A	9
TOTAL:	9
20200100 - EARTH EXCAVATION (CU YD)	
SEGMENT A	4010
TOTAL:	4010
20400800 - FURNISHED EXCAVATION (CU YD)	
SEGMENT A	2725
TOTAL:	2725
21101615 - TOPSOIL FURNISH AND PLACE, 4" (SQ YD)	
SEGMENT A	21257
TOTAL:	21257
25000110 - SEEDING, CLASS 1A (ACRE)	
SEGMENT A	3.23
TOTAL:	3.23
25000312 - SEEDING, CLASS 4A (ACRE)	
SEGMENT A	1.38
TOTAL:	1.38
25000322 - SEEDING, CLASS 5A (ACRE)	
SEGMENT A	1.38
TOTAL:	1.38
25000400 - NITROGEN FERTILIZER NUTRIENT (POUND)	
SEGMENT A	393
TOTAL:	393
25000500 - PHOSPHORUS FERTILIZER NUTRIENT (POUND)	
SEGMENT A	393
TOTAL:	393
25000600 - POTASSIUM FERTILIZER NUTRIENT (POUND)	
SEGMENT A	393
TOTAL:	393
25100115 - MULCH, METHOD 2 (ACRE)	
SEGMENT A	4.37
TOTAL:	4.37
25100630 - EROSION CONTROL BLANKET (SQ YD)	
SEGMENT A	19060
TOTAL:	19060
25100635 - HEAVY DUTY EROSION CONTROL BLANKET (SQ YD)	
SEGMENT A	2196
TOTAL:	2196

28000400 - PERIMETER EROSION BARRIER (FOOT)	
SEGMENT A	6394
TOTAL:	6394
28000500 - INLET AND PIPE PROTECTION (EACH)	
SEGMENT A	
STA 53+30 LT	1
STA 58+20 LT	1
TOTAL:	2
28100101 - STONE RIPRAP, CLASS A1 (SQ YD)	
SEGMENT A	1204
TOTAL:	1204
28200200 - FILTER FABRIC (SQ YD)	
SEGMENT A	2810
TOTAL:	2810
35101400 AGGREGATE BASE COURSE, TYPE B (TON)	
SEGMENT A	2469
TOTAL:	2469
40600275 BITUMINOUS MATERIALS (PRIME COAT)	
SEGMENT A	9046
TOTAL:	9046
40600290 BITUMINOUS MATERIALS (TACK COAT)	
SEGMENT A	67
TOTAL:	67
40604050 HOT-MIX ASPHALT SURFACE COURSE, MIX "C", IL-9.5 N50	
SEGMENT A	666
TOTAL:	666
42000101 - PORTLAND CEMENT CONCRETE PAVEMENT 6" (JOINTED) (SQ YD)	
SEGMENT A	490
TOTAL:	490
42300300 - PORTLAND CEMENT CONCRETE DRIVEWAY PAVEMENT, 7 INCH (SQ YD)	
SEGMENT A	
STA 50+40.2 LT	61
STA 51+28 LT	61
STA 52+16.1 LT	61
STA 52+81.8 LT	61
TOTAL:	244

42400100 - PORTLAND CEMENT CONCRETE SIDEWALK 4 INCH (SQ FOOT)	
SEGMENT A	
STA 50+05.0 - 53+72.0 LT	1835
STA 53+82.1 LT	16
STA 59+02.8 LT	34
STA 63+82.7 LT	34
STA 68+62.3 LT	34
STA 73+43.8 LT	34
STA 82+73.9 LT	
STA 87+21.6 LT	100
STA 88+64.6 LT	34
STA 89+20.6 LT	100
STA 91+20.6 LT	100
STA 93+04.5 LT	100
STA 93+33.96	784
STA 94+05.44	376
TOTAL:	3615
42400800 - DETECTABLE WARNINGS (SQ FOOT)	
SEGMENT A	
STA 53+75	20
STA 93+44	33.5
STA 94+08	38.5
TOTAL:	92
44000200 - DRIVEWAY PAVEMENT REMOVAL (SQ YD)	
SEGMENT A	
50+40.2 LT	50
51+28 LT	50
52+16.1 LT	50
52+81.8 LT	80
TOTAL:	230
44000500 - COMBINATION CURB AND GUTTER REMOVAL (FOOT)	
SEGMENT A	
STA 50+09.70 - 50+74.70	65
STA 50+95.46 - 51+60.46	65
STA 51+83.62 - 53+68.1	200
STA 93+27.0 - 93+49.2	46
STA 94+02 RT	22
TOTAL:	398
44000600 - SIDEWALK REMOVAL (SQ FOOT)	
SEGMENT A	
STA 50+03 - 50+22 LT	95
STA 50+62 - 51+11 LT	243
STA 51+50 - 51+95 LT	254
STA 52+37 - 52+62 LT	
STA 53+05 - 53+45 LT	322
STA 92+56.3 - 93+48.7 LT	1091
STA 94+05.44	405
TOTAL:	2494
44200050 - WELDED WIRE REINFORCEMENT (SQ YD)	
SEGMENT A	
50+40.2 LT	61
51+28 LT	61
52+16.1 LT	61
52+81.8 LT	61
STA 67+86 - 68+56	125
STA 71+52 - 72+16	114
STA 75+22 - 76+23	180
TOTAL:	663

44201684 - CLASS D PATCHES, TYPE IV, 3" (SQ YD)	
SEGMENT A	
STA 50+09.70 - 50+74.70	30
STA 50+95.46 - 51+60.46	30
STA 51+83.62 - 53+68.1	88
TOTAL:	148
52200015 - PERMANENT SHEET PILING (SQ FOOT)	
SEGMENT A	
STA 68+55.8 - 71+52.3 RT/LT	5930
STA 72+16.5 - 75+21.6 RT/LT	6102
TOTAL:	
52200800 - SEGMENTAL CONCRETE BLOCK WALL (SQ FOOT)	
SEGMENT A	
STA 53+14 - 53+85	355
TOTAL:	355
60108106 - PIPE UNDERDRAINS, TYPE 1, 6" (FOOT)	
SEGMENT A	
STA 68+50 - 71+52.3 RT	312
STA 72+18.5 - 75+20.5 RT	312
TOTAL:	624
60108206 - PIPE UNDERDRAINS, TYPE 2, 6" (FOOT)	
SEGMENT A	
STA 50+09.70 - 50+74.70 LT	65
STA 50+95.46 - 51+60.46 LT	65
STA 51+83.62 - 53+18.5 LT	
STA 53+33.4 - 53+72.0 LT	50
STA 93+27.0 - 93+49.2	69
STA 94+02 RT	22
TOTAL:	
60604400 - COMBINATION CONCRETE CURB AND GUTTER TYPE B-6.18 (FOOT)	
SEGMENT A	
STA 57+86 - 68+56	140
STA 71+52 + 72+16	
STA 75+22 - 76+23	202
TOTAL:	470
* 66900200 - NON-SPECIAL WASTE DISPOSAL (CU YD)	
SEGMENT A	951
TOTAL:	951
* 66900530 - SOIL DISPOSAL ANALYSIS (EACH)	
SEGMENT A	6
TOTAL:	6
* 66901001 - REGULATED SUBSTANCES PRE-CONSTRUCTION PLAN (L SUM)	
SEGMENT A	1
TOTAL:	1

* 66901003 - REGULATED SUBSTANCES FINAL CONSTRUCTION REPORT (L SUM)	
SEGMENT A	1
TOTAL:	1
* 66901005 - ENGINEERED BARRIER (SQ YD)	
SEGMENT A	
STA 80+35 - 80+55	47
STA 81+06 - 82+15 RT	75
STA 85+76 - 86+00	125
TOTAL:	247
* 66901006 - REGULATED SUBSTANCES MONITORING (CAL DAY)	
SEGMENT A	10
TOTAL:	10
67100100 - MOBILIZATION (L SUM)	
SEGMENT A	1
TOTAL:	1
72000100 - SIGN PANEL - TYPE 1 (SF)	
SEGMENT A	
STA 53+81.5 LT	4.5
STA 54+46.4 LT	2.5
STA 93+26.0 RT	4.5
TOTAL:	11.5
72900100 - METAL POST - TYPE A (FOOT)	
SEGMENT A	
STA 53+81.5 LT	10
STA 54+46.4 LT	10
STA 93+26.0 RT	10
TOTAL:	30
78000100 - THERMOPLASTIC PAVEMENT MARKING - LETTER AND SYMBOLS (SQ FOOT)	
SEGMENT A	
STA 50+57 RT	9.5
STA 52+55 RT	9.5
TOTAL:	19
78000400 - THERMOPLASTIC PAVEMENT MARKING - LINE 6" (FOOT)	
SEGMENT A	
STA 93+39.78 - 94+16.71	254
TOTAL:	254
78000600 - THERMOPLASTIC PAVEMENT MARKING - LINE 12" (FOOT)	
SEGMENT A	
STA 93+39.78 - 94+16.71	311
TOTAL:	311
78000650 - THERMOPLASTIC PAVEMENT MARKING - LINE 24" (FOOT)	
SEGMENT A	
STA 53+81 LT	5
STA 93+25	5
TOTAL:	10

78000650 - THERMOPLASTIC PAVEMENT MARKING - LINE 24" (FOOT)	
SEGMENT A	
STA 53+81 LT	5
STA 93+25	5
TOTAL:	
80400100 - ELECTRIC SERVICE INSTALLATION (EACH)	
SEGMENT A	
STA 53+81 LT	1
STA 92+44 LT	1
TOTAL:	2
81028730 - UNDERGROUND CONDUIT, COILABLE NONMETALLIC CONDUIT, 1 1/4" DIA. (FOOT)	
SEGMENT A	2786
TOTAL:	2786
81028750 - UNDERGROUND CONDUIT, COILABLE NONMETALLIC CONDUIT, 2" DIA. (FOOT)	
SEGMENT A	
STA 53+81 LT	125
STA 92+44 LT	125
TOTAL:	
81028760 - UNDERGROUND CONDUIT, COILABLE NONMETALLIC CONDUIT, 2 1/2" DIA. (FOOT)	
SEGMENT A	
STA 92+44 LT	200
TOTAL:	200
81100100 - CONDUIT ATTACHED TO STRUCTURE, 1/2" DIA., GALVANIZED STEEL (FOOT)	
SEGMENT A	
STA 76+23 - 79+79	356
TOTAL:	356
81400100 - HANDHOLE (EACH)	
SEGMENT A	
STA 50+84.9 LT	1
STA 51+71.8 LT	1
STA 52+48.8 LT	1
STA 53+89.0 LT	1
STA 54+35.7 LT	1
STA 55+55.9 LT	1
STA 56+84.1 LT	1
STA 58+02.5 LT	1
STA 59+21.3 LT	1
STA 60+41.2 LT	1
STA 61+61.0 LT	1
STA 62+81.0 LT	1
STA 64+01.0 LT	1
STA 65+20.8 LT	1
STA 66+40.8 LT	1
STA 67+60.8 LT	1
STA 68+80.6 LT	1
STA 70+01.2 LT	1
STA 71+21.1 LT	1
STA 72+41.6 LT	1
STA 73+62.1 LT	1
STA 74+82.1 LT	1
STA 76+00.5 LT	1
STA 80+68.6 LT	1
STA 81+65.0 LT	1
STA 82+63.7 LT	1
STA 83+64.9 LT	1
STA 84+61.6 LT	1
STA 85+68.5 LT	1
STA 86+70.6 LT	1
STA 87+70.6 LT	1
STA 88+70.6 LT	1
STA 89+70.6 LT	1
STA 90+70.7 LT	1
STA 91+70.6 LT	1
TOTAL:	35



ILLINOIS
IOWA
WISCONSIN

OWNER/DEVELOPER:
CITY OF DIXON
121 WEST 2ND STREET
DIXON, IL 61016

PROJECT AND LOCATION:
SHARED USE PATH EXTENSION
SEC 17-00178-00-BT
PROJECT NO. MXY3(094)
JOB C-92-024-19

DRAWN BY: MS
APPROVED BY: JS
DATE: 10/19/22
SCALE: AS NOTED

REVISIONS		
REV. NO.	DESCRIPTION	DATE
1	ADDENDUM 1	01/09/23

DRAWING:
SCHEDULE OF QUANTITIES

SET TYPE: FOR BID SET
G:\C30\17\17-0678\Plans\17-067A - PLANS 2.dwg, SCH-1

JOB NUMBER:
17-067B

SHEET NUMBER:
C7.0

SCHEDULE OF QUANTITIES

81702145 - ELECTRIC CABLE IN CONDUIT, 600V (XLP-TYPE USE) 1/C NO.3 (FOOT)	
SEGMENT A	
STA 53+81 LT	125
STA 92+44 LT	125
TOTAL:	250
81702420 - ELECTRIC CABLE IN CONDUIT, 600V (XLP-TYPE USE) 3-1/C NO.8 (FOOT)	
SEGMENT A	12698
TOTAL:	12698
81028760 - UNDERGROUND CONDUIT, COILABLE NONMETALLIC CONDUIT, 2 1/2" DIA. (FOOT)	
SEGMENT A	
STA 76+23 - 79+79	1068
TOTAL:	1068
*87100105 - FIBER OPTIC CABLE IN CONDUIT, NO. 62.5/125, 4F (FOOT)	
SEGMENT A	3856
TOTAL:	3856
A2000090 - TREE, ACER X FREEMANII, 3" CALIPER, B&B	
SEGMENT A	6
TOTAL:	6
A2007122 - QUERCUS RUBRA (RED OAK), 3" CALIPER, B&B	
SEGMENT A	1
TOTAL:	1
B2006266 - TREE, SYRINGA RETICULATA, 6' HEIGHT, CLUMP FORM, B&B	
SEGMENT A	6
TOTAL:	6
C2000436 - SHRUB, ARONIA ARBUTIFOLIA BRILLIANTISSIMA, 3' HEIGHT, B&B	
SEGMENT A	24
TOTAL:	24
C2001636 - SHRUB, CORNUS SERICEA, 3' HEIGHT, B&B	
SEGMENT A	62
TOTAL:	62
C2005818 - SHRUB, RHUS AROMATICA GRO-LOW, 18" WIDTH, B&B	
SEGMENT A	46
TOTAL:	46
C2011736 - SHRUB, VIBURNUM DENTATUM, 3' HEIGHT, B&B	
SEGMENT A	18
TOTAL:	18
C2012748 - SHRUB, VIBURNUM PRUNIFOLIUM, 4' HEIGHT B&B	
SEGMENT A	8
TOTAL:	8
D2001460 - EVERGREEN, JUNIPERUS SCOPULORUM WICHITA BLUE, 5' HEIGHT, B&B	
SEGMENT A	8
TOTAL:	8
D2001772 - EVERGREEN, PICEA ABIES, 6' HEIGHT, B&B	
SEGMENT A	9
TOTAL:	9

D2002984 - EVERGREEN, PINUS STROBUS, 7' HEIGHT, B&B	
SEGMENT A	6
TOTAL:	6
D2C00724 - EVERGREEN, JUNIPERUS CHINENSIS VAR. SRAGENTII VIRDIS, 2' WIDTH, CONT.	
SEGMENT A	50
TOTAL:	50
D2C00918 - EVERGREEN, JUNIPERUS HORIZONTALIS HUGHES, 18" WIDTH, CONT.	
SEGMENT A	28
TOTAL:	28
C2000524 - SHRUB, ARONIA MELANOCARPA IROQUOIS BEAUTY, 2' HEIGHT, CONT. (EACH)	
SEGMENT A	32
TOTAL:	32
C2002324 - SHRUB, DIERVILLA LONICERA, 2' HEIGHT, B&B (EACH)	
SEGMENT A	92
TOTAL:	92
C2C041G5 - SHRUB, ITEA VIRGINICA LITTLE HENRY, CONTAINER GROWN, 5-GALLON (EACH)	
SEGMENT A	20
TOTAL:	20
C2C09784 - SHRUB, SPIREA BETULIFOLIA TOR, 2' HEIGHT, CONT. (EACH)	
SEGMENT A	27
TOTAL:	27
C2C15761 - SHRUB, SPIREA JAPONICA NEON FLASH, 18" HEIGHT, 5-GALLON CONTAINER (EACH)	
SEGMENT A	53
TOTAL:	53
K0012990 - PERENNIAL PLANTS, ORNAMENTAL TYPE, GALLON POT (UNIT)	
SEGMENT A	0.32
TOTAL:	0.32
*K1005481 - SHREDDED BARK MULCH 3" (SQ YD)	
SEGMENT A	
FOR PLANTINGS	2001
UNDER BOARDWALK	834
TOTAL:	
* X0100003 - CLEARING AND GRUBBING (SQ YD)	
SEGMENT A	
STA 57+30 - 71+62 RT/LT - 15' RT/LT OF CL	2431
STA 72+05 - 75+20 RT/LT - 15' RT/LT OF CL	
STA 80+10 - 85+45 LT - 15' LT OF CL, RT-60' OF CL	2724
STA 100+25 - 104+10 LT - 15' LT OF CL, RT-60' OF CL	2524
TOTAL:	8294
* X0322920 - COMMUNICATIONS CABINET AND EQUIPMENT (EACH)	
SEGMENT A	1
TOTAL:	1
* X0323455 - ADJUST MONITORING WELLS	
SEGMENT A	
STA 82+90 LT	1
TOTAL:	1

* X0326806 - WASHOUT BASIN (L SUM)	
SEGMENT A	1
TOTAL:	1
* X0327997 - TRASH RECEPTACLES (EACH)	
SEGMENT A	
STA 87+20 LT	1
STA 93+05 LT	1
TOTAL:	2
* X1400088 - POWER PEDESTALS (EACH)	
SEGMENT A	
STA 53+51 LT	1
STA 92+44.7 LT	1
TOTAL:	2
* X14000210 - LIGHT POLE, SPECIAL, 12' (EACH)	
SEGMENT A	
STA 50+84.9 LT	1
STA 51+71.8 LT	1
STA 52+48.8 LT	
STA 53+89.0 LT	1
STA 54+35.7 LT	1
STA 55+55.9 LT	1
STA 56+84.1 LT	1
STA 58+02.5 LT	1
STA 59+21.3 LT	1
STA 60+41.2 LT	1
STA 61+61.0 LT	1
STA 62+81.0 LT	1
STA 64+01.0 LT	1
STA 65+20.8 LT	1
STA 66+40.8 LT	1
STA 67+60.8 LT	1
STA 68+80.6 LT	1
STA 70+01.2 LT	1
STA 71+21.1 LT	1
STA 72+41.6 LT	1
STA 73+62.1 LT	1
STA 74+82.1 LT	1
STA 76+00 LT	1
STA 80+68.6 LT	1
STA 81+65 LT	1
STA 82+63.7 LT	1
STA 83+64.9 LT	1
STA 84+61.6 LT	1
STA 85+68.5 LT	1
STA 86+70.6 LT	1
STA 87+70.6 LT	1
STA 88+70.6 LT	1
STA 89+70.6 LT	1
STA 90+70.7 LT	1
STA 91+70.6 LT	1
TOTAL:	35
* X1400238 - LUMINAIRE, LED, SPECIAL (EACH)	
SEGMENT A	35
TOTAL:	35
* X2503110 - MOWING (SPECIAL) (ACRE)	
STA 75+65 - 82+00 RT / LT	42.8
TOTAL:	42.8

* X5012502 - CONCRETE REMOVAL (SPECIAL) (CU YD)	
SEGMENT A	125
TOTAL:	125
* X5091725 - BICYCLE RAILING, SPECIAL (FOOT)	
SEGMENT A	
STA 67+56 - 68+56 LT/RT	140
STA 71+52 - 72+16 LT/RT	128
STA 75+22 - 76+23 LT/RT	202
TOTAL:	470
* X5800110 - MEMBRANE WATERPROOFING (SPECIAL) (SQ FT)	
SEGMENT A	7523
TOTAL:	7523
* X7010216 - TRAFFIC CONTROL AND PROTECTION (SPECIAL) (L SUM)	
SEGMENT A	1
TOTAL:	1
* X8130110 - JUNCTION BOX SPECIAL (EACH)	
SEGMENT A	
STA 53+82.1 LT	1
STA 59+02.8 LT	1
STA 63+82.7 LT	1
STA 68+62.3 LT	1
STA 73+43.8 LT	1
STA 75+21.6 LT	1
STA 79+79.5 LT	1
STA 80+50 LT	1
STA 82+73.9 LT	1
STA 88+64.6 LT	1
TOTAL:	10
* X8250500 - LIGHTING UNIT COMPLETE, SPECIAL	
SEGMENT A	42
TOTAL:	42
* X8360120 LIGHT POLE FOUNDATION, SPECIAL (EACH)	
SEGMENT A	35
TOTAL:	35
* Z0003850 - BENCHES (EACH)	
SEGMENT A	
STA 87+20 LT	1
STA 89+20 LT	1
STA 91+20 LT	1
STA 93+05 LT	1
TOTAL:	4
* Z0077900 - WOOD POST AND RAIL FENCE (FOOT)	
SEGMENT A	
STA 62+75 - 67+83.6 RT/LT	1030
STA 68+55.8 - 71+52.3 RT/LT	594
STA 72+16.5 - 75+21.6 RT/LT	612
STA 76+23.3 - 79+79.5 RT/LT	714
TOTAL:	2950

* XX008287 - BOARDWALK STRUCTURE (SQ FOOT)	
SEGMENT A	4576
TOTAL:	4576
* XX008921 - EMERGENCY CALL BOXES (EACH)	
SEGMENT A	
STA 53+82.1 LT	1
STA 59+02.8 LT	1
STA 63+82.7 LT	
STA 68+62.3 LT	1
STA 73+43.8 LT	1
STA 82+73.9 LT	1
STA 88+64.6 LT	
TOTAL:	7



ILLINOIS
IOWA
WISCONSIN

OWNER/DEVELOPER:
CITY OF DIXON
121 WEST 2ND STREET
DIXON, IL 61016

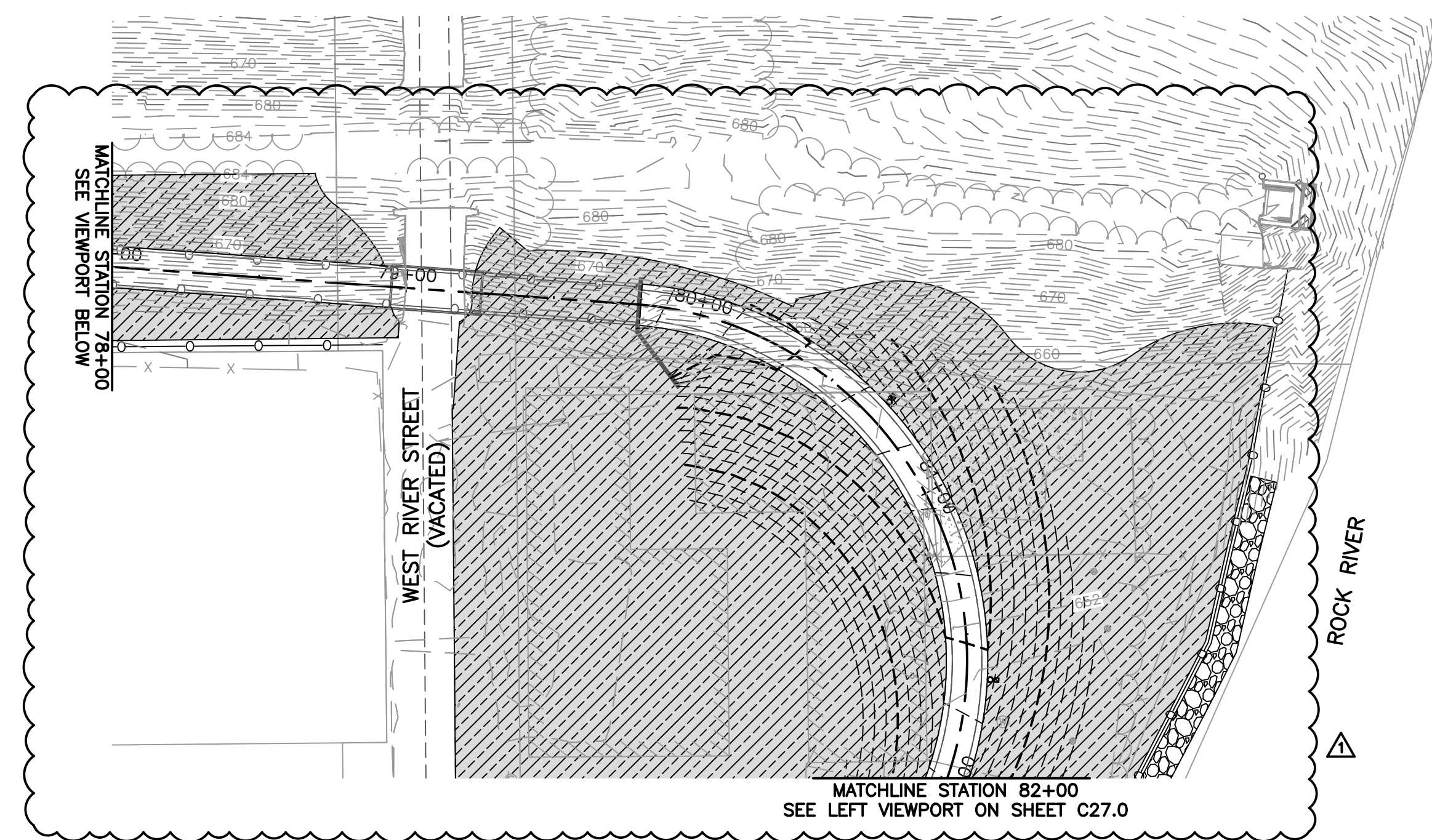
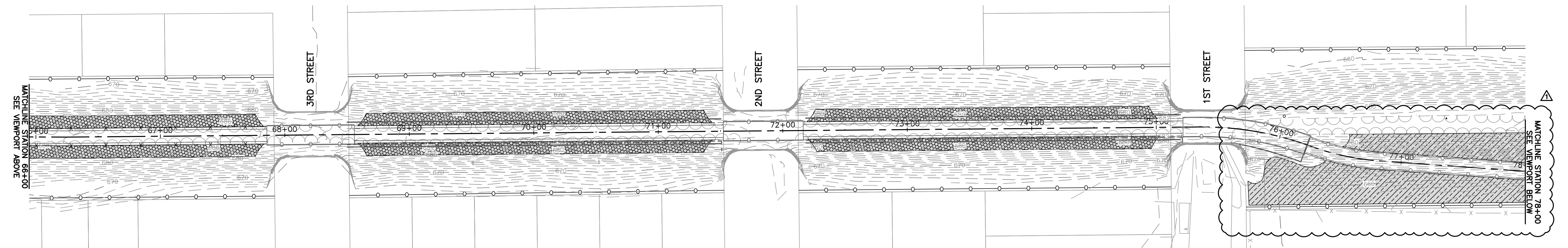
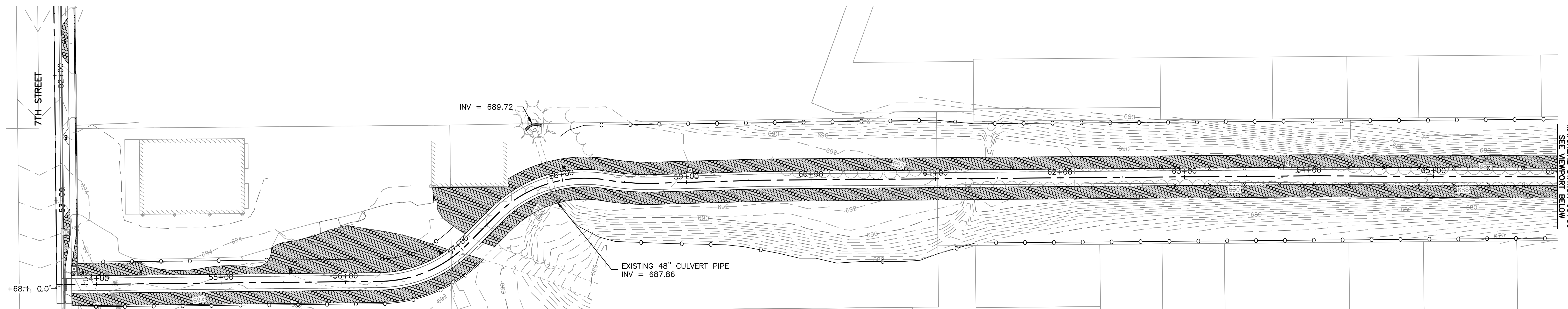
PROJECT AND LOCATION:
SHARED USE PATH EXTENSION
SEC 17-00178-00-BT
PROJECT NO. MXY3(094)
JOB C-92-024-19

DRAWN BY: MS
APPROVED BY: JS
DATE: 10/19/22
SCALE: AS NOTED

REVISIONS		
REV. NO.	DESCRIPTION	DATE
1	ADDENDUM 1	01/09/23

DRAWING:
SCHEDULE OF QUANTITIES
SET TYPE: FOR BID SET
G:\C30\17\17-0678\Plans\17-067A - PLANS 2.dwg, SCH-2

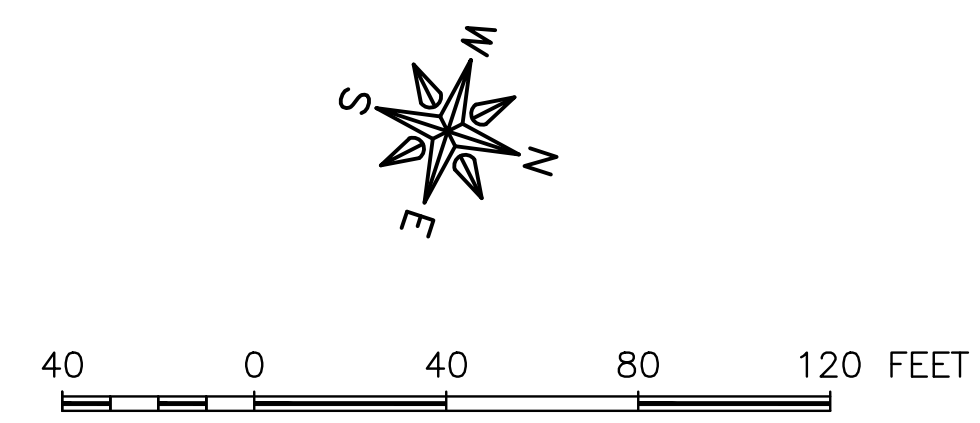
JOB NUMBER:
17-067B
SHEET NUMBER:
C8.0



LEGEND

- PERIMETER EROSION BARRIER
- TOPSOIL FURNISH AND PLACE 4", SEEDING CLASS 1A AND MULCH METHOD 2
- TOPSOIL FURNISH AND PLACE 4", SEEDING CLASS 4A AND 5A, MULCH METHOD 2, MOWING (SPECIAL)
- STONE RIPRAP, CLASS A1 AND FILTER FABRIC
- INLET AND PIPE PROTECTION

- EROSION CONTROL AND RESTORATION NOTES:**
- CONTRACTOR TO RESTORE ANY DISTURBED AREA TO PRE CONSTRUCTION CONDITIONS
 - SEE LANDSCAPE PLAN FOR TOPSOIL, PLANTINGS AND MULCH.



FEHR GRAHAM
ENGINEERING & ENVIRONMENTAL
ILLINOIS DESIGN FIRM NO. 184-003525

ILLINOIS
IOWA
WISCONSIN

OWNER/DEVELOPER:
CITY OF DIXON
121 WEST 2ND STREET
DIXON, IL 61016

PROJECT AND LOCATION:
SHARED USE PATH EXTENSION
SEC 17-00178-00-BT
PROJECT NO. MXY3(094)
JOB C-92-024-19

DRAWN BY: MS
APPROVED BY: JS
DATE: 10/19/22
SCALE: AS NOTED

REVISIONS		
REV. NO.	DESCRIPTION	DATE
1	ADDENDUM 1	01/09/23

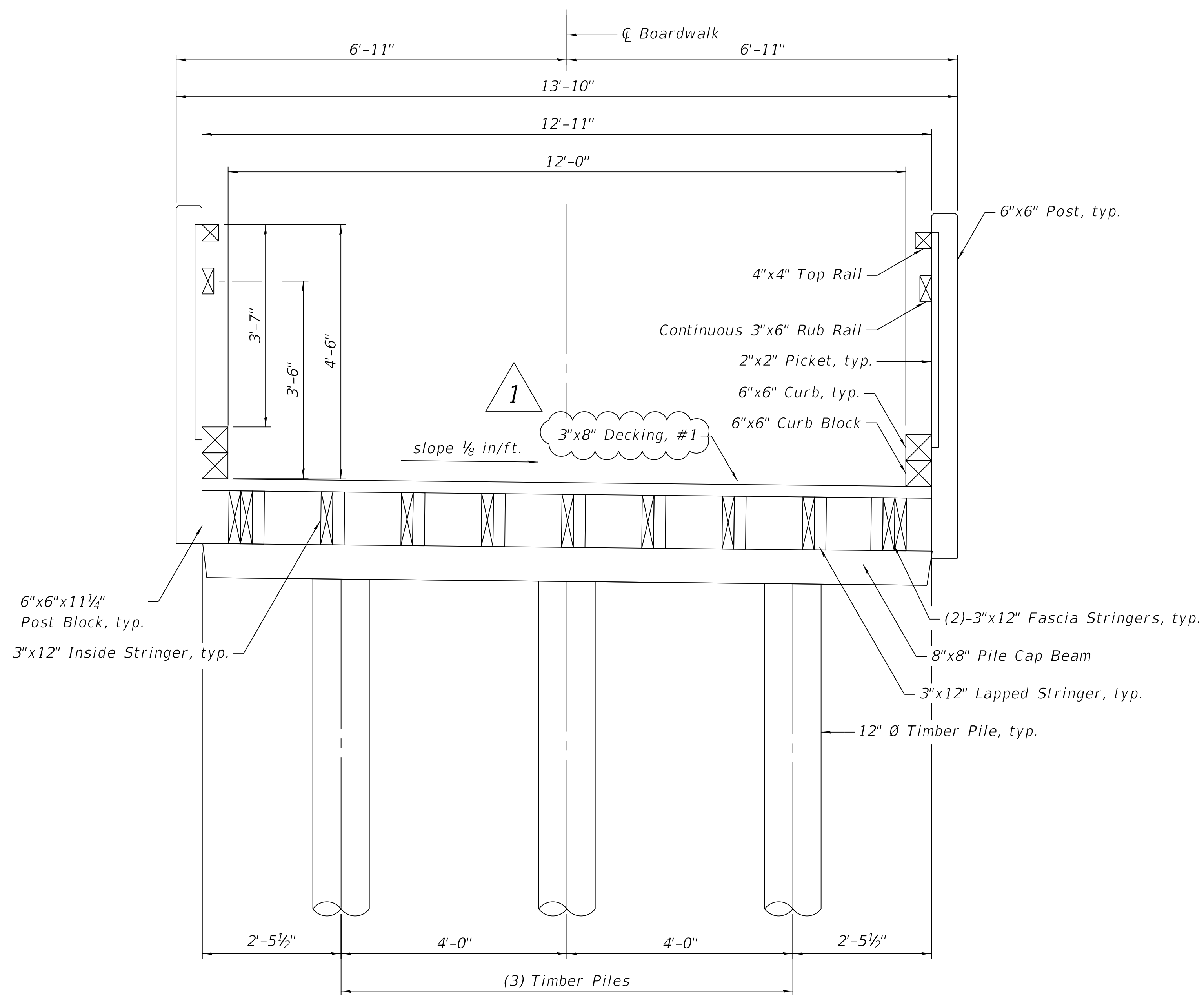
DRAWING:
EROSION CONTROL AND RESTORATION PLAN
SEGMENT A

SET TYPE: FOR BID SET

G:\C30\17-0678\Plans\17-067A - PLANS.dwg, EROS 1

JOB NUMBER:
17-067B

SHEET NUMBER:
C26.0



BOARDWALK CROSS SECTION
(Looking Upstation)

Notes:

1. The top and bottom of pier post shall be covered with an epoxy glue to prevent water absorption.
2. Provide 2"x10" blocking for joists at the center of each span.
3. Decking shall be butted tightly board to board to allow for board shrinkage after deck construction.
4. Decking to be attached with 305 stainless steel or better screw recessed 1/8" below deck surface.
5. No splices shall be allowed for bridge decking.
6. All nails shall be the common wire nail type unless noted otherwise.
7. Wood members designated KDAT shall be kiln dried after treatment.

1 8. Wood members designated CA shall be pressure treated with copper azole.

9. Wood members designated CCA shall be pressure treated with chromated copper arsenate.
10. All lumber cross section dimensions are nominal unless stated otherwise.

1 11. All timber piles with exposed heights above ground exceeding 5'-0" shall be braced according to the cross bracing detail shown on sheet S4.0.

PILE DATA

Nominal Required Bearing: 21 kips
Factored Resistance Available: 11.5 kips

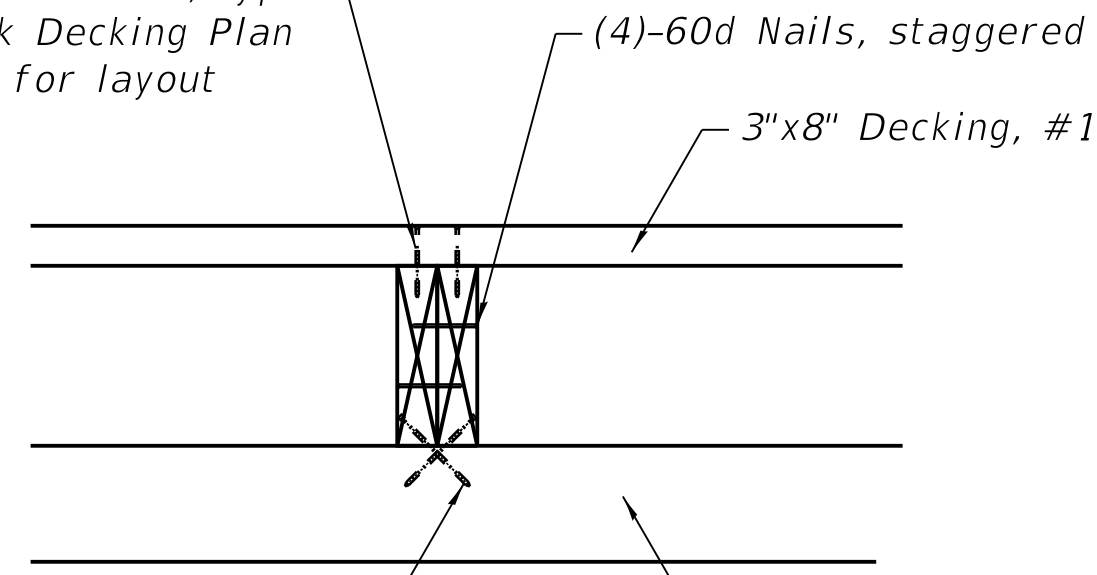
Boardwalk Segment	Boardwalk Station	Estimated Bottom of Pile Elev.	Depth of Timber Pile below Existing Grade
A	76+00	670.0	8 ft
	76+95	663.5	5 ft
	78+00	658.0	5 ft
	78+56	657.5	5 ft

Timber piles: Unless otherwise specified,

1. Piles are required to be driven to the nominal required bearing as shown on the plans as defined by boardwalk designer.
2. If proper bearing capacity is not met at the minimum pile depth, pilings shall be spliced and driven until proper bearing is achieved. All standard splices must provide engineers calculations and stamp. Contractor may visit site prior to bidding, to assist in determining the proper depth of pilings. No additional compensation will be allowed for driving and installing piles deeper than may be shown on the drawings.
3. Timber piles shall be southern yellow pine, conforming to ASTM standard D-25 (Latest Edition) for quality. Specification for size shall be 1" taper in 10 linear feet.
4. All piling shall be pressure impregnated to a minimum of .80 pounds per cubic foot net retention of CCA in accordance with AWWA standard U1, commodity specification (E), use category 4C.
5. Hand augering is not an approved pile installation method.

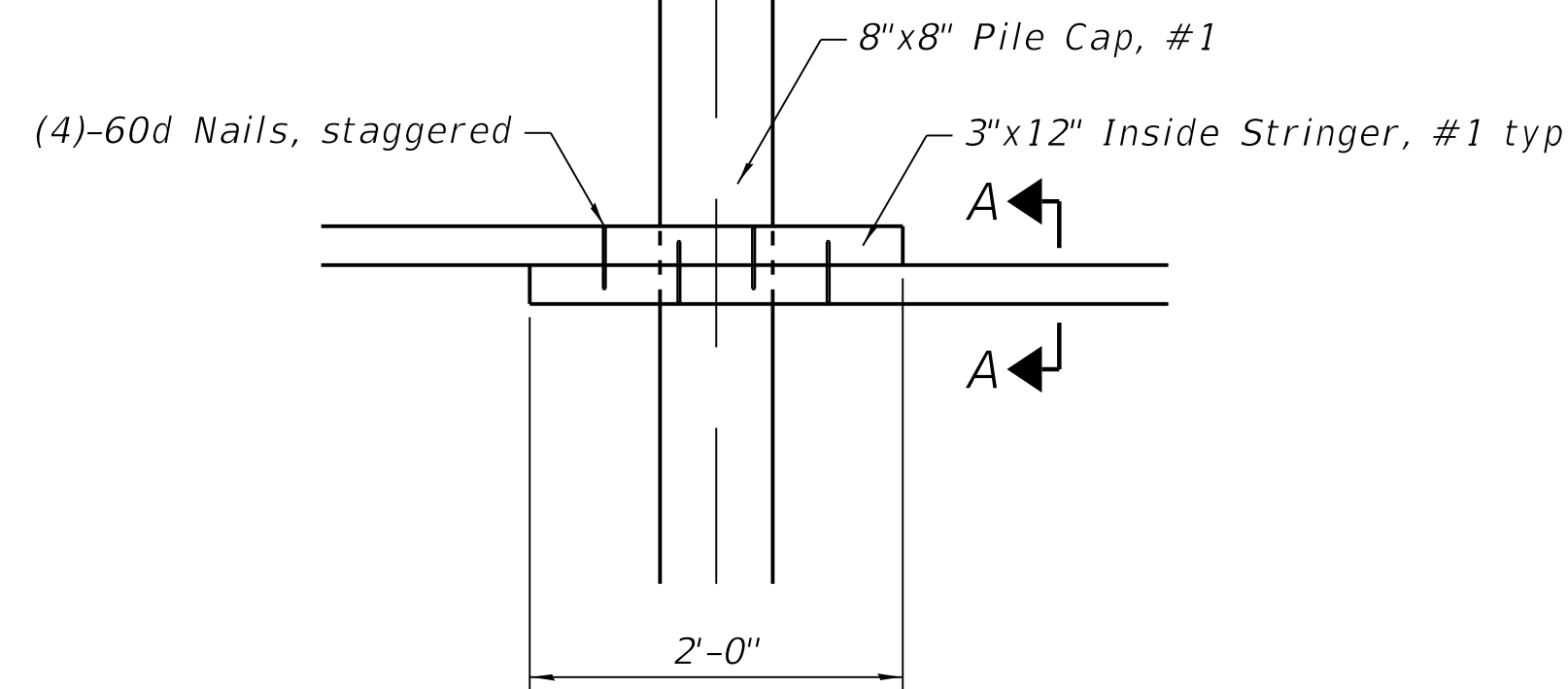
REVISIONS		
REV. NO.	DESCRIPTION	DATE
1	ADDENDUM 1	12/21/22

#12 x 4½" Stainless Steel Torx Drive Deck Screw, typ. See Boardwalk Decking Plan on sheet S6.0 for layout and spacing

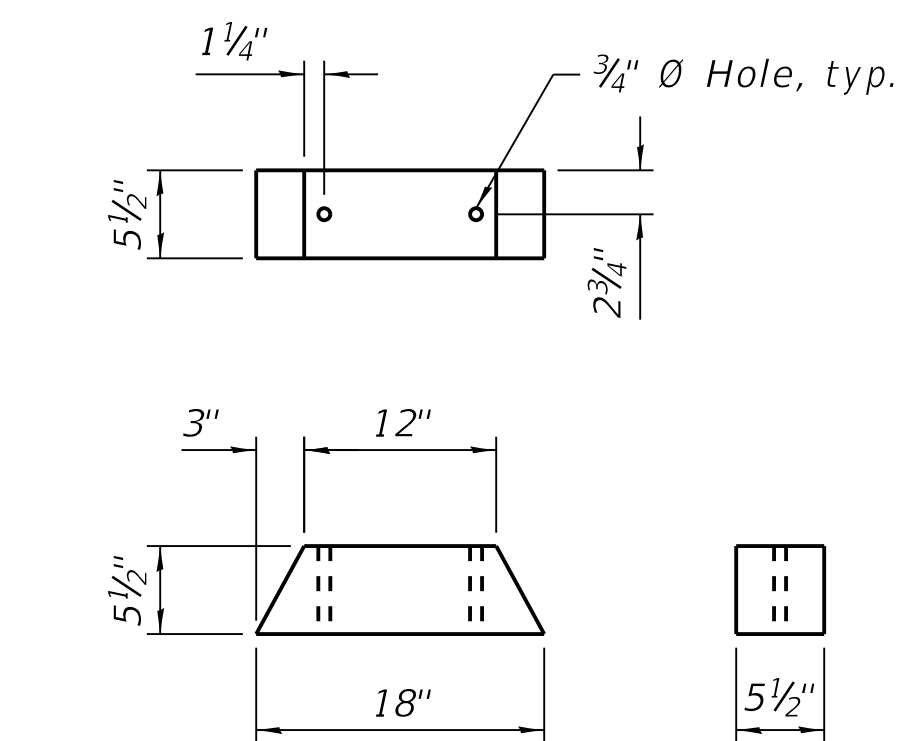


(4)-¼" Ø x 6" Galvanized Heavy-Duty Connector screw, 2 each stringer

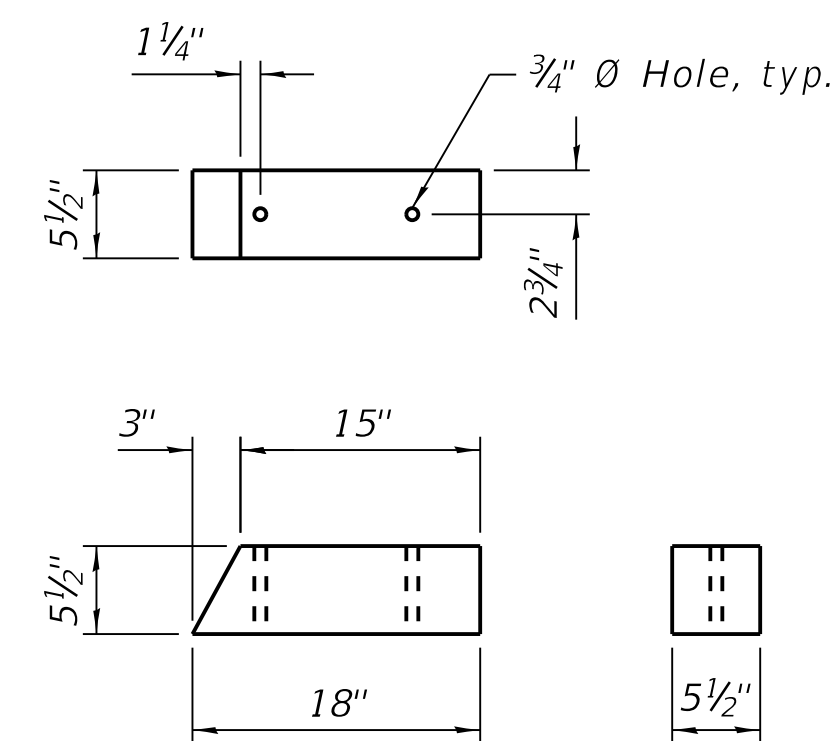
SECTION A-A



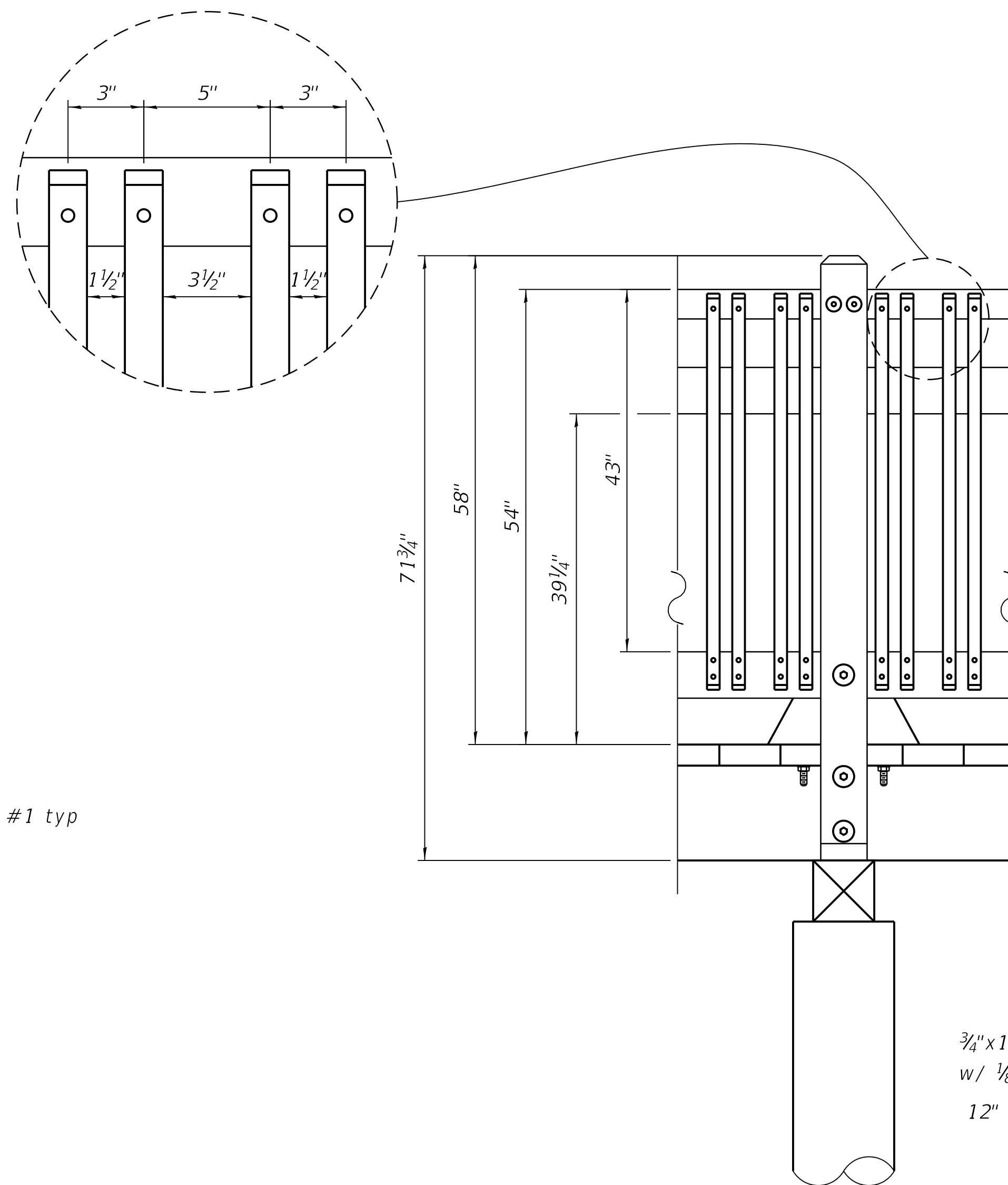
LAPPED STRINGER CONNECTION DETAIL



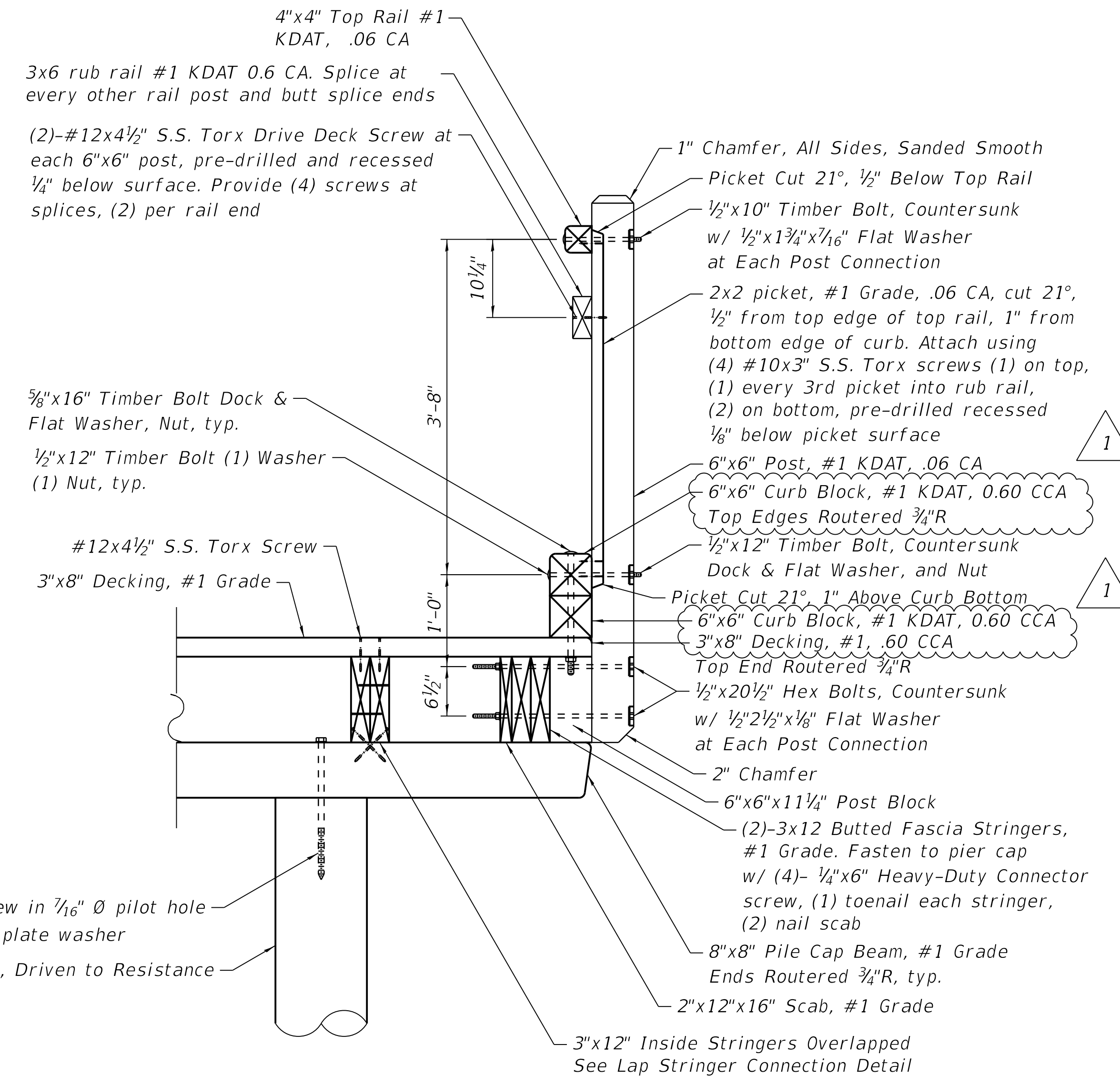
6"x6"x18" CURB BLOCK DETAIL



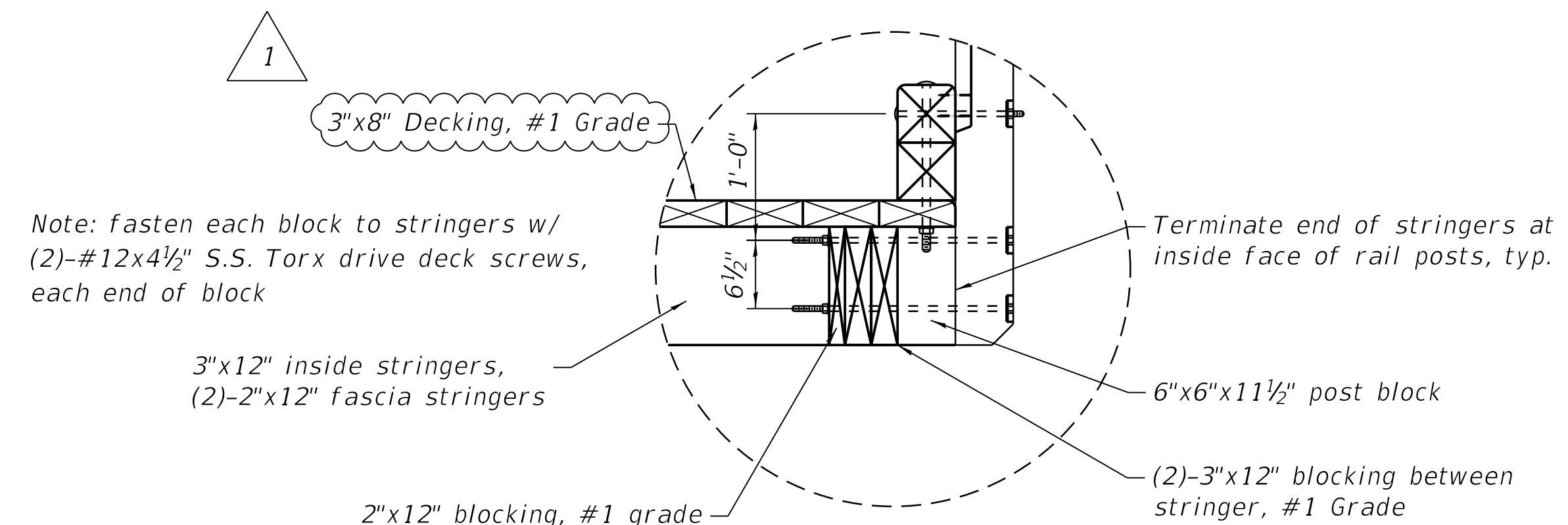
6"x6"x18" END BLOCK DETAIL



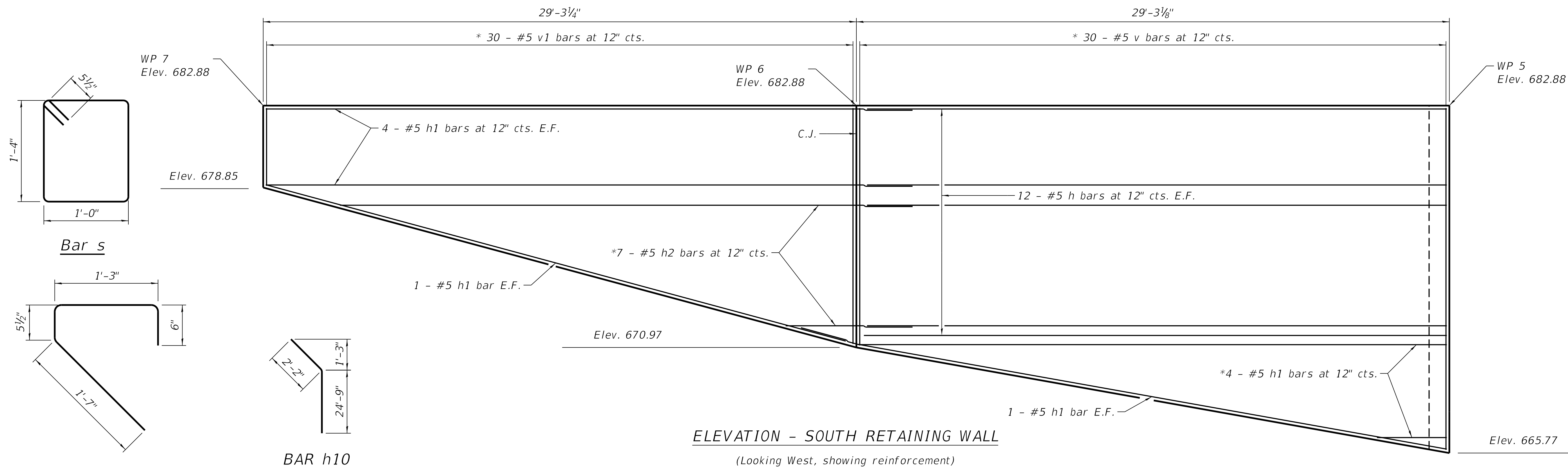
43" HIGH RAILING DETAIL



43" ALTERNATE HIGH RAILING DETAIL (RAILING PERPENDICULAR TO STRINGERS)

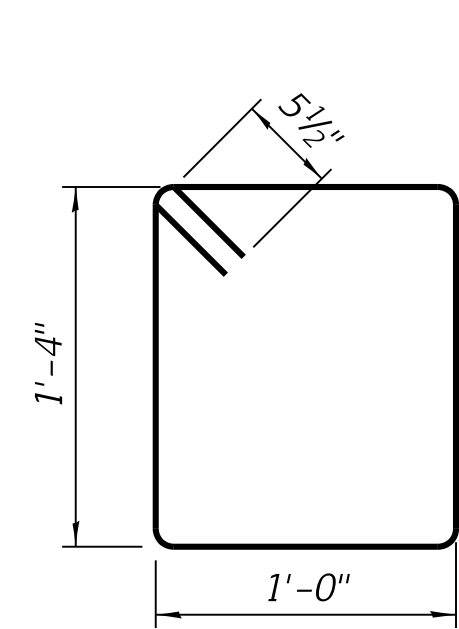


REVISIONS		
REV. NO.	DESCRIPTION	DATE
1	ADDENDUM 1	01/05/23

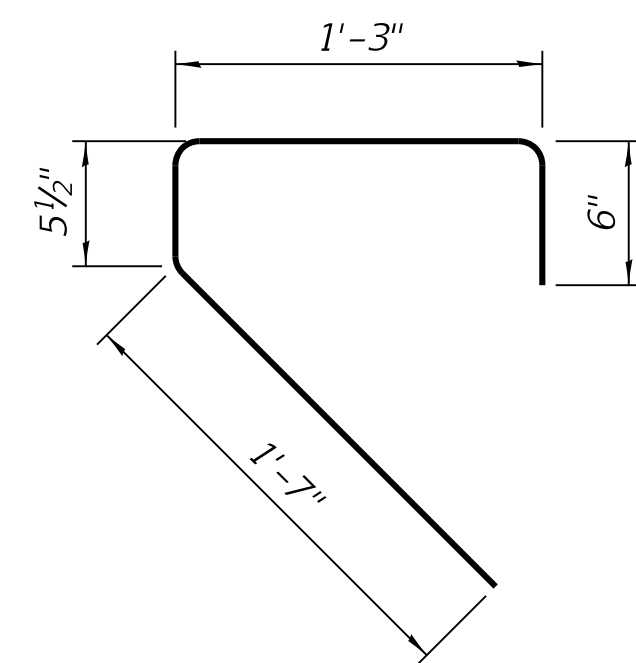


ELEVATION - SOUTH RETAINING WALL

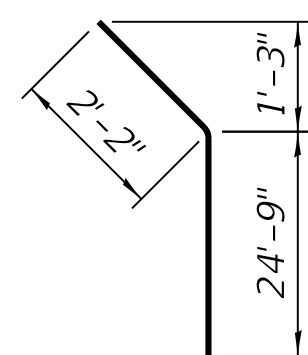
(Looking West, showing reinforcement)



Bar s



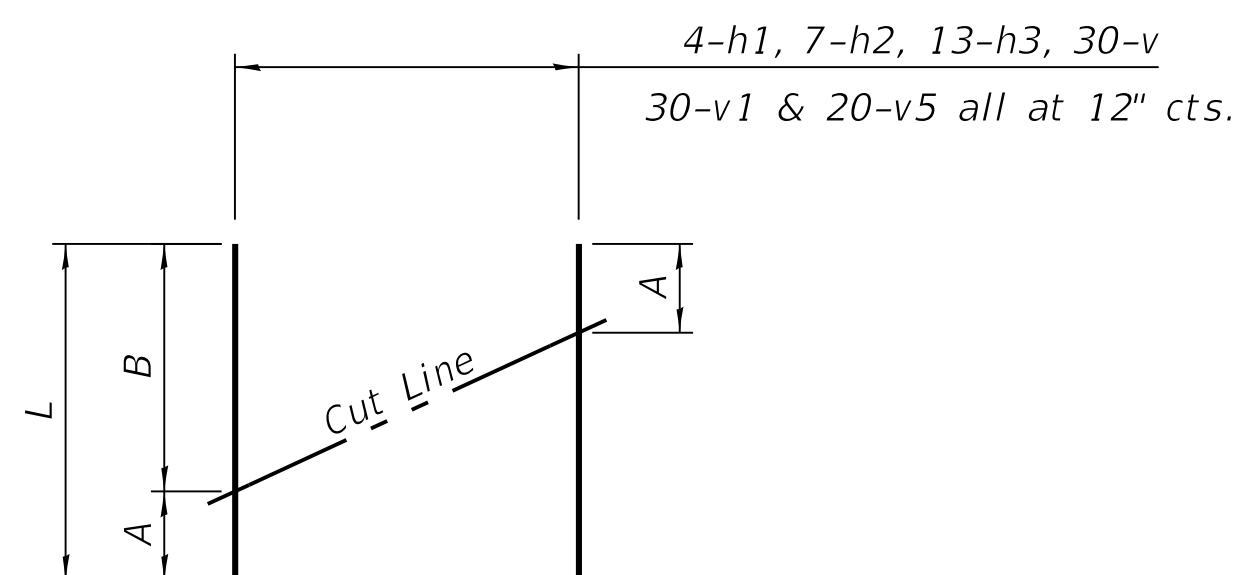
Bar s1



BAR h10

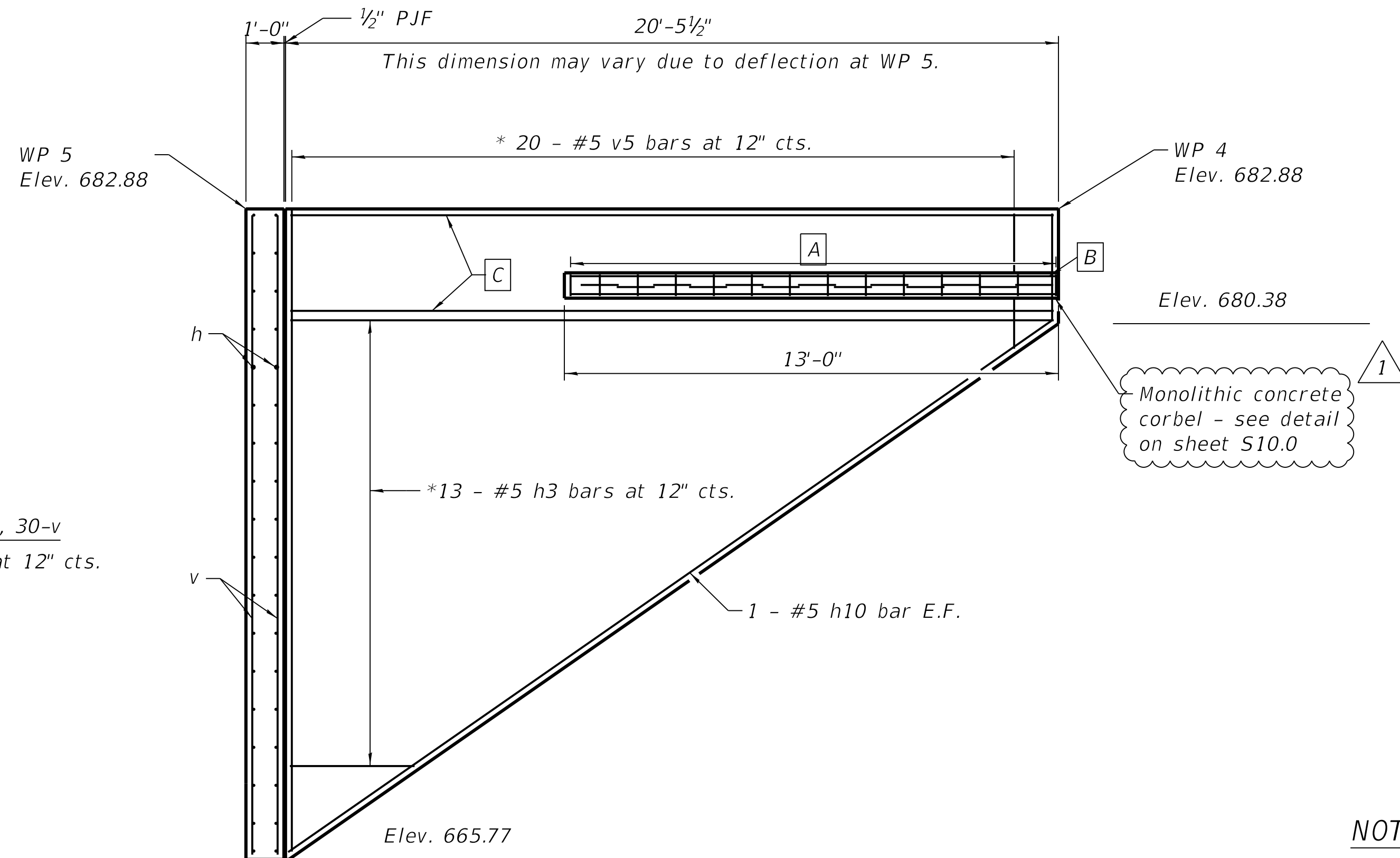
A, B & L DIMENSIONS

Bar	A	B	L
h1	3'-2"	28'-11"	32'-1"
h2	6'-5"	28'-11"	38'-6"
h3	3'-2"	20'-0"	23'-2"
v	11'-8"	16'-9"	28'-5"
v1	3'-9"	11'-7"	15'-4"
v5	3'-6"	16'-8"	20'-2"



FIELD CUTTING DIAGRAM

Order h1, h2, h3, h7, v, v1, and v5 full length.
Cut as shown and use remainder of bars in opposite face of wall.



ELEVATION - SOUTH RETAINING WALL

(Looking South, showing reinforcement)

* See field cutting diagram.

- A** 14 - #4 s1 bars at 12" cts (oriented vertically), 13 - #4 s bars at 12" cts. (oriented horizontally)
- B** 1 - #5 h12 bar in nose of corbel
- C** 3 - #5 h11 bars at 12" cts. E.F.

BILL OF MATERIAL

Bar	No.	Size	Length	Shape
h	24	#5	28'-11"	—
h1	16	#5	32'-1"	—
h2	7	#5	38'-6"	—
h3	13	#5	23'-2"	—
h10	2	#5	26'-11"	—
h11	6	#5	20'-0"	—
h12	1	#5	12'-8"	—
v	30	#5	28'-5"	—
v1	30	#5	15'-4"	—
v5	20	#5	20'-2"	—
s	13	#4	5'-7"	□
s1	14	#4	3'-10"	□
Reinforcement Bars			Lbs.	3930
Concrete Structures (Retaining Wall)			Cu. Yds.	31.8

LEGEND:

C.J. = Construction Joint
E.F. = Each Face

MIN. BAR LAP

#5 BARS = 2'-9" (Horizontal)

NOTES:

- For typical wall cross sections and details, see sheet S10.0.
- For soldier pile layout, see sheet S9.0.
- For stationing, offsets, and elevations of workpoints, see sheet S2.0.

FEHR GRAHAM

ENGINEERING & ENVIRONMENTAL

ILLINOIS DESIGN FIRM NO. 184-003525

ILLINOIS
IOWA
WISCONSIN

OWNER/DEVELOPER:
CITY OF DIXON
121 WEST 2ND STREET
DIXON, IL 61016

PROJECT AND LOCATION:
SHARED USE PATH EXTENSION
SEC 17-00178-00-BT
PROJECT NO. MXY3(094)
JOB C-92-024-19

DRAWN BY: CFC
APPROVED BY: MCB
DATE: 11/15/22
SCALE: AS NOTED

REVISIONS		
REV. NO.	DESCRIPTION	DATE
1	ADDENDUM 1	01/09/23

DRAWING:
CONCRETE FACING - SOUTH RETAINING WALL
SN 052-P003.1

SET TYPE: FOR BID SET
G:\C30\Bridg Structural(Copy Only)\sht-008-concrete-facing-south.dgn

JOB NUMBER:
17-067B

SHEET NUMBER:
S8.0