

F.A.P. RTE.	SECTION	COUNTY	TOTAL SHEETS	SHEET NO.
332	17-00016-00-BT	KANKAKEE	28	3
		ILLINOIS	CONTRACT NO. 87759	

CODE NO.	ITEM	UNIT	TOTAL QUANTITY
Δ	20100110	TREE REMOVAL (6 TO 15 UNITS DIAMETER)	UNIT 74
	20200100	EARTH EXCAVATION	CU YD 426
	20400800	FURNISHED EXCAVATION	CU YD 457
	21001000	GEOTECHNICAL FABRIC FOR GROUND STABILIZATION	SQ YD 1,696
	21101615	TOPSOIL FURNISH AND PLACE, 4"	SQ YD 4,726
	25000100	SEEDING, CLASS 1	ACRE 1.00
	25000400	NITROGEN FERTILIZER NUTRIENT	POUND 90
	25000500	PHOSPHORUS FERTILIZER NUTRIENT	POUND 90
	25000600	POTASSIUM FERTILIZER NUTRIENT	POUND 90
	25100630	EROSION CONTROL BLANKET	SQ YD 4,726
	28000250	TEMPORARY EROSION CONTROL SEEDING	POUND 100
	28000305	TEMPORARY DITCH CHECKS	FOOT 140
	28000500	INLET AND PIPE PROTECTION	EACH 5
	35101600	AGGREGATE BASE COURSE, TYPE B 4"	SQ YD 263
	35101800	AGGREGATE BASE COURSE, TYPE B 6"	SQ YD 183
	35102100	AGGREGATE BASE COURSE, TYPE B 9"	SQ YD 1,513
	35300100	PORTLAND CEMENT CONCRETE BASE COURSE 6"	SQ YD 77
	40604050	HOT-MIX ASPHALT SURFACE COURSE, IL-9.5, MIX "C", N50	TON 307
	42000100	PORTLAND CEMENT CONCRETE PAVEMENT 6"	SQ YD 183
	42400200	PORTLAND CEMENT CONCRETE SIDEWALK 5 INCH	SQ FT 1,256
	42400800	DETECTABLE WARNINGS	SQ FT 160
	44000100	PAVEMENT REMOVAL	SQ YD 303
	44000157	HOT-MIX ASPHALT SURFACE REMOVAL, 2"	SQ YD 323
	44000500	COMBINATION CURB AND GUTTER REMOVAL	FOOT 112
	44000600	SIDEWALK REMOVAL	SQ FT 263
	54213657	PRECAST REINFORCED CONCRETE FLARED END SECTION 12"	EACH 1
	550A0050	STORM SEWERS, CLASS A, TYPE 1 12"	FOOT 24
	550A0070	STORM SEWERS, CLASS A, TYPE 1 15"	FOOT 8
	550A0120	STORM SEWERS, CLASS A, TYPE 1 24"	FOOT 16
	56109210	WATER VALVES TO BE ADJUSTED	EACH 3
Δ *	56400400	FIRE HYDRANTS TO BE RELOCATED	EACH 1
	60236200	INLETS, TYPE A, TYPE 8 GRATE	EACH 1
	60603800	COMBINATION CONCRETE CURB AND GUTTER, TYPE B-6.12	FOOT 264
Δ *	66900200	NON-SPECIAL WASTE DISPOSAL	CU YD 55
Δ *	66900530	SOIL DISPOSAL ANALYSIS	EACH 1
Δ *	66901001	REGULATED SUBSTANCES PRE-CONSTRUCTION PLAN	L SUM 1
Δ *	66901003	REGULATED SUBSTANCES FINAL CONSTRUCTION REPORT	L SUM 1
Δ *	66901006	REGULATED SUBSTANCES MONITORING	CAL DA 7
	67100100	MOBILIZATION	L SUM 1
Δ	72000100	SIGN PANEL - TYPE 1	SQ FT 15.75
Δ	72900100	METAL POST - TYPE A	FOOT 49
Δ	78000200	THERMOPLASTIC PAVEMENT MARKING - LINE 4"	FOOT 333
Δ	78000400	THERMOPLASTIC PAVEMENT MARKING - LINE 6"	FOOT 129
Δ	78000600	THERMOPLASTIC PAVEMENT MARKING - LINE 12"	FOOT 200
Δ	78000650	THERMOPLASTIC PAVEMENT MARKING - LINE 24"	FOOT 67
Δ	81028330	UNDERGROUND CONDUIT, PVC, 1 1/4" DIA.	FOOT 1,300
Δ	81400100	HANDHOLE	EACH 1
Δ	81702417	ELECTRIC CABLE IN CONDUIT, 600V (XLP-TYPE USE) 3-1/C NO. 6, 1/C NO. 6 GROUND	FOOT 1,487
*	Z0013798	CONSTRUCTION LAYOUT	L SUM 1
*	X0322135	BOLLARDS, QUICK RELEASE	EACH 11
*	X0322939	RELOCATE EXISTING FLARED END SECTION	EACH 3
Δ *	X1400238	LUMINAIRE, LED, SPECIAL	EACH 10
Δ *	X1400431	LIGHTING ASSEMBLY (SPECIAL)	EACH 10
*	X7010216	TRAFFIC CONTROL AND PROTECTION, (SPECIAL)	L SUM 1
*	X7240500	RELOCATE EXISTING SIGNS	EACH 4
Δ *	X8360110	LIGHT POLE FOUNDATION, SPECIAL	FOOT 50
Δ *	X8440110	RELOCATE EXISTING LIGHT POLE WITH LUMINAIRE	EACH 2
Δ	80400100	ELECTRIC SERVICE INSTALLATION	EACH 1
Δ	82500370	LIGHTING CONTROLLER, BASE MOUNTED, 240VOLT, 200AMP	EACH 1

\* Pay Items with Special Provisions  
Δ Specialty Pay Items

**PIGGUSH ENGINEERING**



PiggushEng.com

586 William Latham Drive, Suite 8  
Bourbonnais, IL 60914

O 815.614.3447  
F 815.614.3735

Rev	Issued	Description
1	12/30/22	PER ADDENDUM A

\*Take care and understand and use the products of Piggush Engineering, Inc. and shall not be responsible for any damage or injury to the project or the contractor's property. Piggush Engineering, Inc. shall not be responsible for any damage or injury to the project or the contractor's property. Piggush Engineering, Inc. shall not be responsible for any damage or injury to the project or the contractor's property.

**MULTI-USE PATH**

E. Taylor St.  
(IL Route 1/17)  
Grant Park, Illinois 60940

**VILLAGE OF GRANT PARK**

106 West Taylor Street  
Grant Park, Illinois 60940

Project: 17130.0301

Issued: Preliminary

Drawn by: JGW/LMM

Checked by: TJL

**SUMMARY OF QUANTITIES**

P:\2022\17130\17130.dwg 12/30/22 12:42:31 PM

F.A.P. RTE.	SECTION	COUNTY	TOTAL SHEETS	SHEET NO.
332	17-00016-00-BT	KANKAKEE	28	21
		ILLINOIS	CONTRACT NO. 87759	



PiggushEng.com

586 William Latham Drive, Suite 8  
Bourbonnais, IL 60914

O 815.614.3447  
F 815.614.3735

Rev	Issued	Description
1	12/30/22	PER ADDENDUM A

These plans and specifications are the property of Piggush Engineering, Inc. and shall not be photocopied, re-drawn, or used on any other project other than the project specifically designed for, without written permission. The owners and engineers of Piggush Engineering, Inc. disclaim any liability for any changes or modifications made to these plans or the design thereon without their consent.

**MULTI-USE PATH**

E. Taylor St.  
(IL Route 1/17)  
Grant Park, Illinois 60940

**VILLAGE OF GRANT PARK**

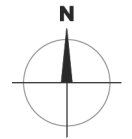
106 West Taylor Street  
Grant Park, Illinois 60940

Project: 17130.0301

Issued: Preliminary

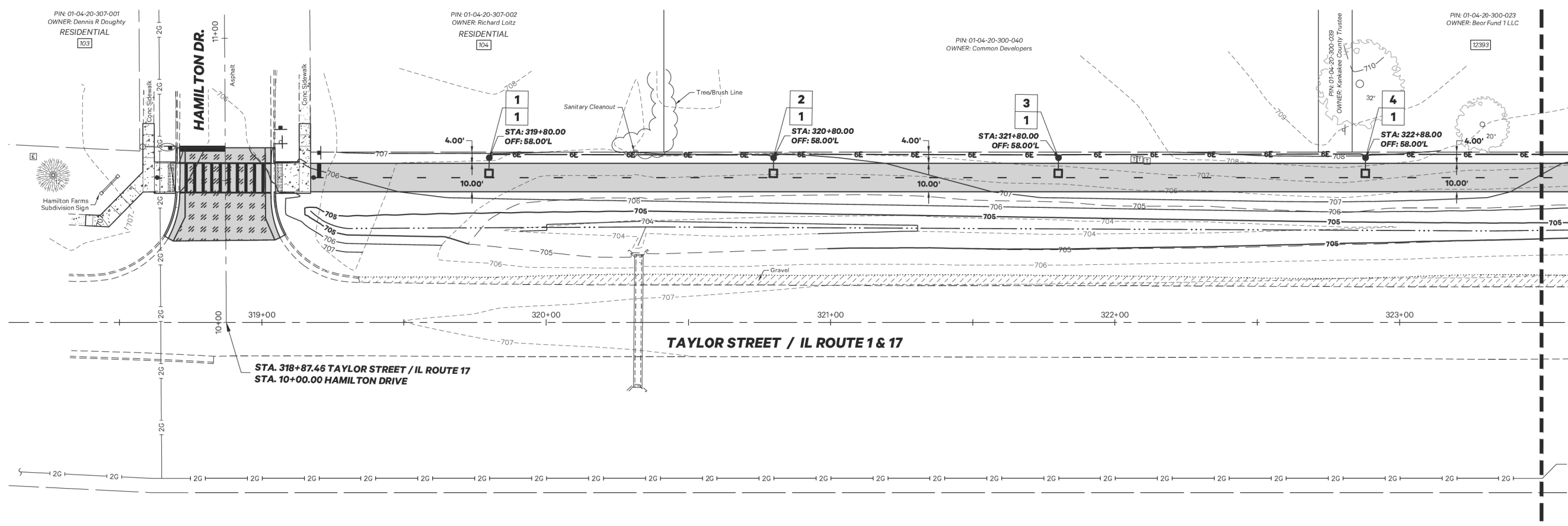
Drawn by: JGW/LMM

Checked by: T.J.L.



Scale: 1"=20'  
0 10 20 40

**LIGHTING PLAN**



**SYMBOLS & LEGEND**  
Lighting Plan

- Pole Number
- Circuit Number for Luminaire & Receptacle
- New Handhole (HH)
- New Light Pole w/Box Fixture
- New Lighting Controller

BILL OF MATERIALS			
CODE NO.	ITEM	UNIT	TOTAL QUANTITY
80400100	ELECTRIC SERVICE INSTALLATION	EACH	1
81028330	UNDERGROUND CONDUIT, PVC, 1 1/4" DIA.	FOOT	1300
81400100	HANDHOLE	EACH	1
81702417	ELECTRIC CABLE IN CONDUIT, 600V (XLP-TYPE USE) 3-1/C NO. 6, 1/C NO. 6 GROUND	FOOT	1487
82500370	LIGHTING CONTROLLER, BASE MOUNTED, 240VOLT, 200AMP	EACH	1
X1400238	LUMINAIRE, LED, SPECIAL	EACH	10
X1400431	LIGHTING ASSEMBLY (SPECIAL)	EACH	10
X8360110	LIGHT POLE FOUNDATION, SPECIAL	FOOT	50

P:\2021\17130\Drawings\Drawings\17130\0301 Prelim.dwg, PL LIGHT, 12/27/2022 3:06:10 PM

F.A.P. RTE.	SECTION	COUNTY	TOTAL SHEETS	SHEET NO.
332	17-00016-00-BT	KANKAKEE	28	22
		ILLINOIS	CONTRACT NO. 87759	



PiggushEng.com

586 William Latham Drive, Suite 8  
Bourbonnais, IL 60914  
O 815.614.3447  
F 815.614.3735

Rev	Issued	Description
1	12/30/22	PER ADDENDUM A

These plans and specifications are the property of Piggush Engineering, Inc. and shall not be photocopied, re-drawn, or used on any other project other than the project specifically designed for, without written permission. The owners and engineers of Piggush Engineering, Inc. disclaim any liability for any changes or modifications made to these plans or the design thereon without their consent.

**MULTI-USE PATH**

E. Taylor St.  
(IL Route 1/17)  
Grant Park, Illinois 60940

**VILLAGE OF GRANT PARK**

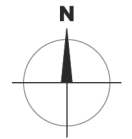
106 West Taylor Street  
Grant Park, Illinois 60940

Project: 17130.0301

Issued: Preliminary

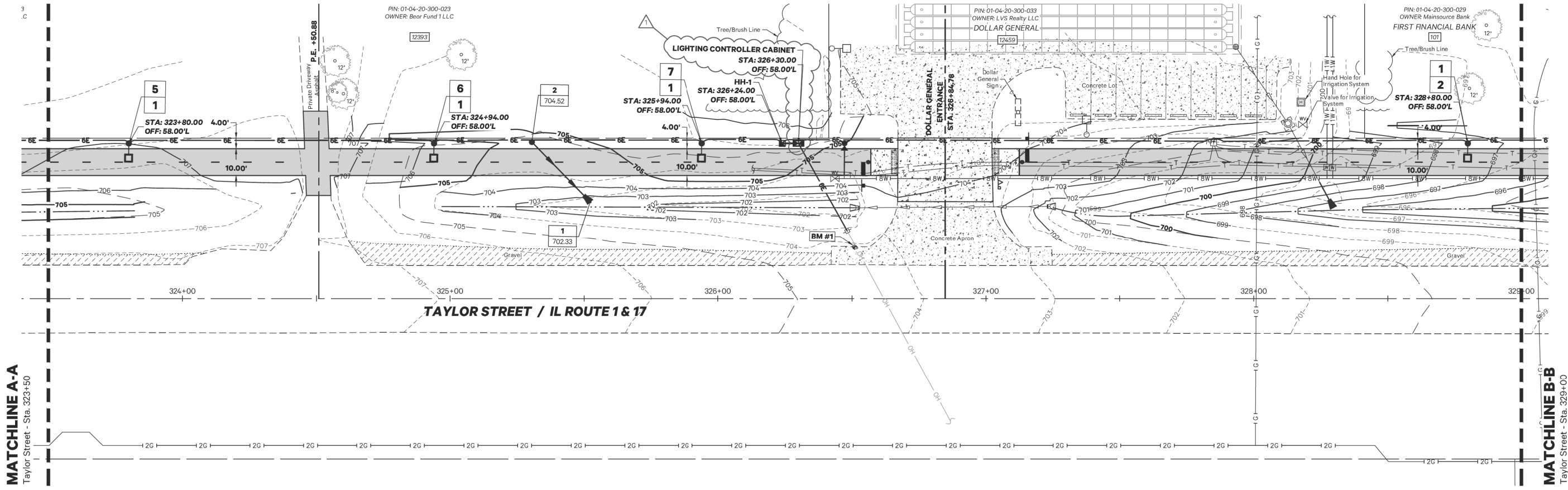
Drawn by: JGW/LMM

Checked by: TJL

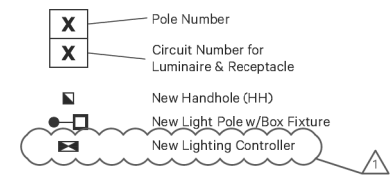


Scale: 1"=20'  
0 10 20 40

**LIGHTING PLAN**



**SYMBOLS & LEGEND**  
Lighting Plan



**MATCHLINE A-A**  
Taylor Street - Sta. 323+50

**MATCHLINE B-B**  
Taylor Street - Sta. 329+00

P:\2021\17130\Drawings\Drawings\17130\0301 Prelim.dwg, 22\_LIGHTING, 12/27/2022 3:06:13 PM