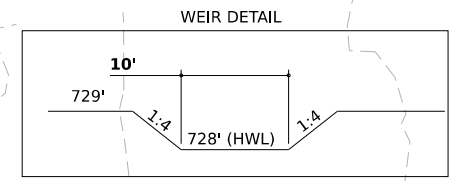
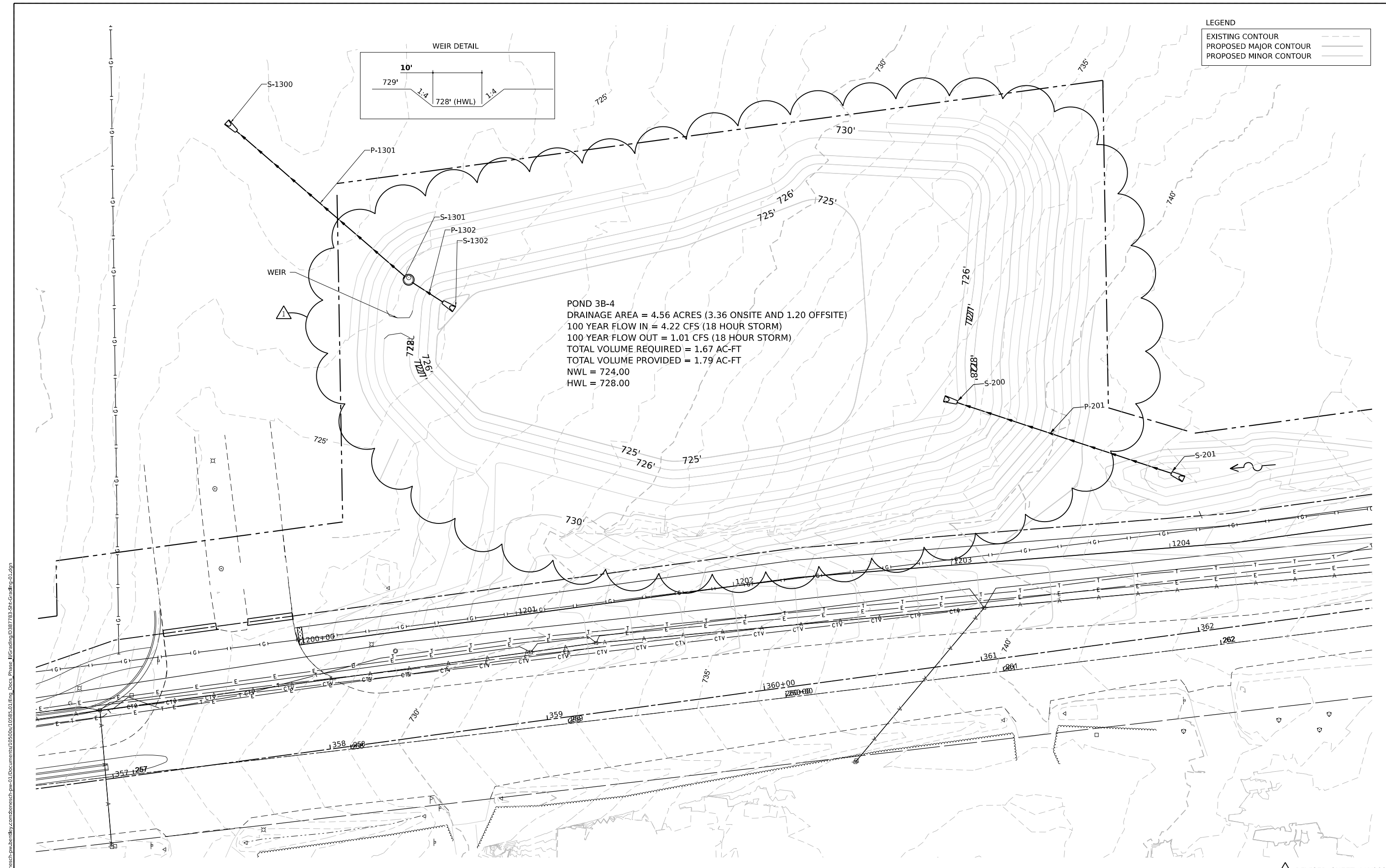


LEGEND	
EXISTING CONTOUR	
PROPOSED MAJOR CONTOUR	
PROPOSED MINOR CONTOUR	



POND 3B-4
 DRAINAGE AREA = 4.56 ACRES (3.36 ONSITE AND 1.20 OFFSITE)
 100 YEAR FLOW IN = 4.22 CFS (18 HOUR STORM)
 100 YEAR FLOW OUT = 1.01 CFS (18 HOUR STORM)
 TOTAL VOLUME REQUIRED = 1.67 AC-FT
 TOTAL VOLUME PROVIDED = 1.79 AC-FT
 NWL = 724.00
 HWL = 728.00



MODEL: Default
 FILE NAME: p:\benesch-pw-bentley.com\benesch-pw\01\Documents\10595\01\Eng_Docs_Phase_II\Grading\0387783-Stk-Grading-01.dgn
 Alfred Benesch & Company
 1230 E. DuSable Road, Suite 109
 Naperville, Illinois 60563
 630-577-9100 Job No. 10585.01

REVISION SHEET 1/4/2023



USER NAME = tblank
 PLOT SCALE = 40.0000" / in.
 PLOT DATE = 1/4/2023

DESIGNED - T.VOGLER
 DRAWN - T.VOGLER
 CHECKED - E.DEAN
 DATE - 10/28/2022

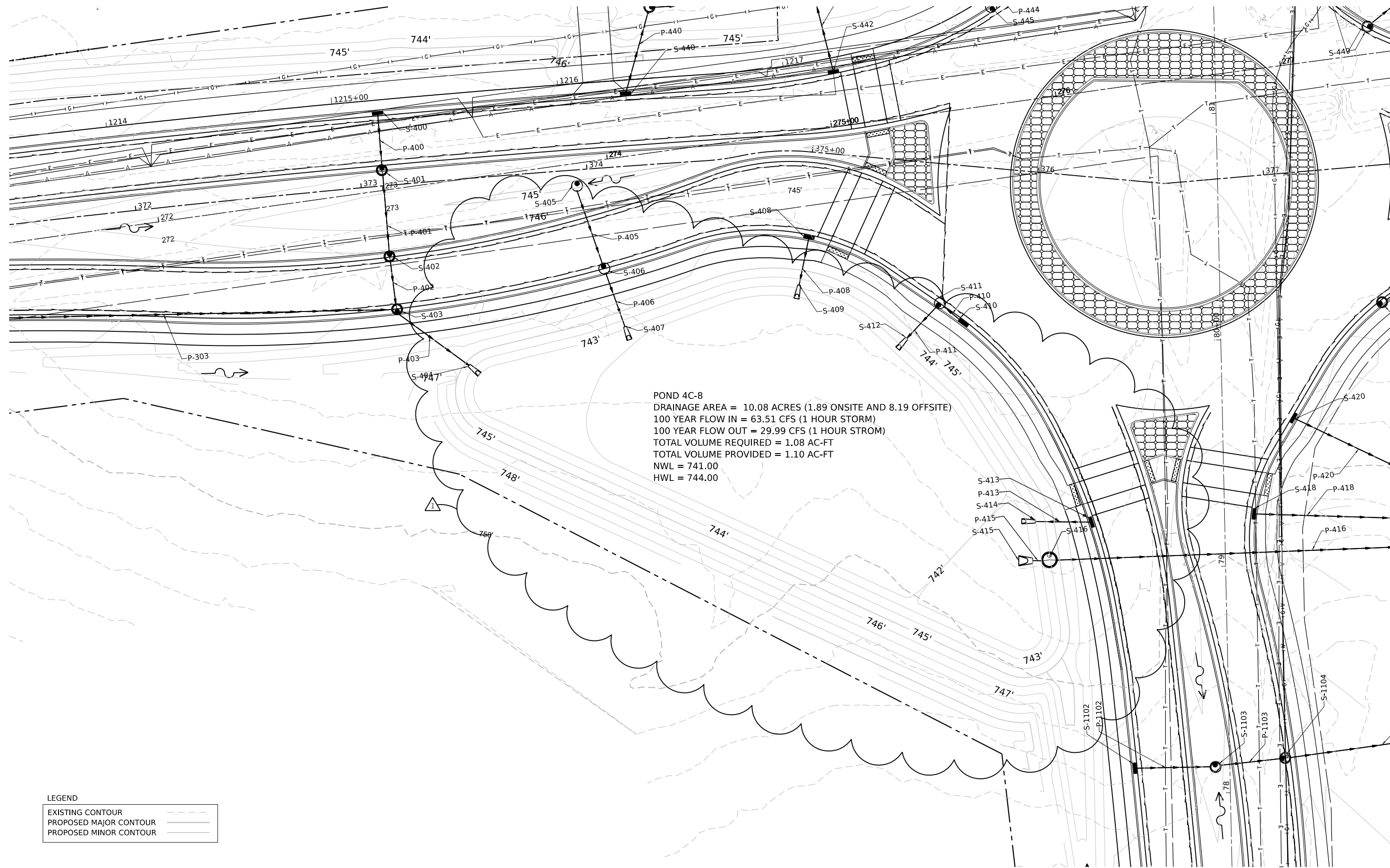
REVISED -
 REVISED -
 REVISED -
 REVISED -



Village of Oswego, IL
 100 Parkers Mill
 Oswego, Illinois 60543
 630-554-3618

**WOLFS CROSSING RD
 DETENTION POND 3X-X (OEHS)**
 SCALE: 1"=20'
 SHEET 1 OF 3 SHEETS STA. TO STA.

F.A.U. RTE.	SECTION	COUNTY	TOTAL SHEETS	SHEET NO.
1577	20-00052-01-PV	KENDALL	364	170
CONTRACT NO. 87783				
ILLINOIS FED. AID PROJECT				



POND 4C-8
 DRAINAGE AREA = 10.08 ACRES (1.89 ONSITE AND 8.19 OFFSITE)
 100 YEAR FLOW IN = 63.51 CFS (1 HOUR STORM)
 100 YEAR FLOW OUT = 29.99 CFS (1 HOUR STORM)
 TOTAL VOLUME REQUIRED = 1.08 AC-FT
 TOTAL VOLUME PROVIDED = 1.10 AC-FT
 NWL = 741.00
 HWL = 744.00

LEGEND

EXISTING CONTOUR	---
PROPOSED MAJOR CONTOUR	---
PROPOSED MINOR CONTOUR	---

1 REVISED SHEET 1/4/2023

MODEL: Default
 FILE NAME: p:\benesch-pw\benesch-pw\01\Documents\10595\01\Eng_Docs_Phase_II\Grading\038783-Stk-Grading-02.dgn
 Alfred Benesch & Company
 1230 E. David Road, Suite 109
 Naperville, Illinois 60563
 630-577-9100 Job No. 10585.01



USER NAME	tblank
PLOT SCALE	40.0000' / in.
PLOT DATE	1/4/2023

DESIGNED	T.VOGLER
DRAWN	T.VOGLER
CHECKED	E.DEAN
DATE	10/28/2022

REVISED	-
REVISED	-
REVISED	-
REVISED	-

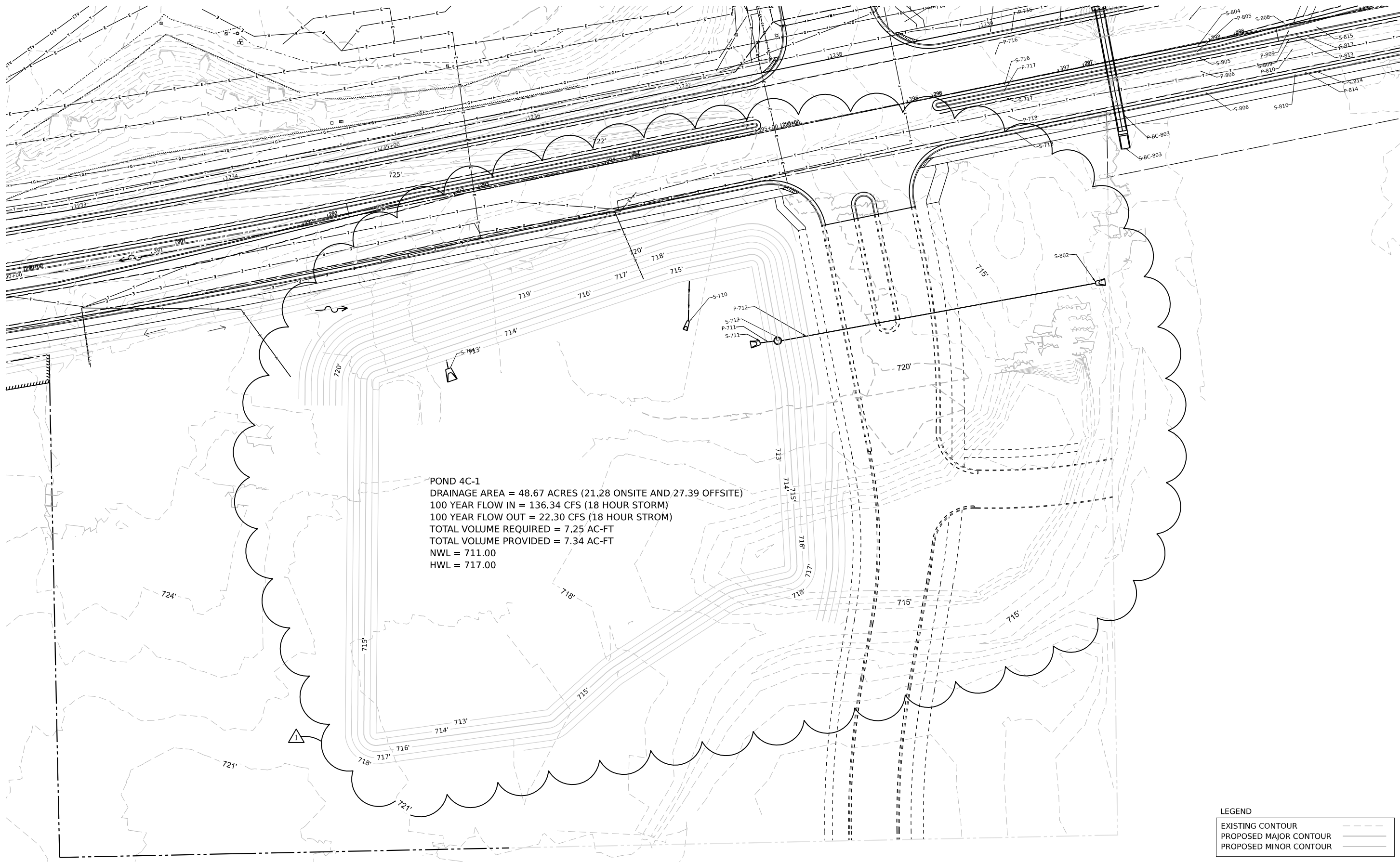


Village of Oswego, IL
 100 Parkers Mill
 Oswego, Illinois 60543
 630-554-3618

**WOLFS CROSSING RD
DETENTION POND 4C-8**

SCALE: 1"=20' SHEET 2 OF 3 SHEETS STA. TO STA.

F.A.U. RTE.	SECTION	COUNTY	TOTAL SHEETS	SHEET NO.
1577	20-00052-01-PV	KENDALL	364	171
CONTRACT NO. 87783				
ILLINOIS FED. AID PROJECT				



POND 4C-1
 DRAINAGE AREA = 48.67 ACRES (21.28 ONSITE AND 27.39 OFFSITE)
 100 YEAR FLOW IN = 136.34 CFS (18 HOUR STORM)
 100 YEAR FLOW OUT = 22.30 CFS (18 HOUR STROM)
 TOTAL VOLUME REQUIRED = 7.25 AC-FT
 TOTAL VOLUME PROVIDED = 7.34 AC-FT
 NWL = 711.00
 HWL = 717.00

LEGEND

EXISTING CONTOUR	---
PROPOSED MAJOR CONTOUR	---
PROPOSED MINOR CONTOUR	---

MODEL: Default
 FILE NAME: p:\benesch-pw\benesch-pw\01\Documents\10595\01\Eng_Docs_Phase_II\Grading\038783-Stk-Grading-03.dgn



USER NAME = tblank
 PLOT SCALE = 60.0000' / in.
 PLOT DATE = 1/4/2023

DESIGNED - T.VOGLER
 DRAWN - T.VOGLER
 CHECKED - E.DEAN
 DATE - 10/28/2022

REVISED -
 REVISED -
 REVISED -
 REVISED -



Village of Oswego, IL
 100 Parkers Mill
 Oswego, Illinois 60543
 630-554-3618

**WOLFS CROSSING RD
 DETENTION POND 4C-1**
 SCALE: 1"=20'
 SHEET 3 OF 3 SHEETS STA. TO STA.

F.A.U. RTE.	SECTION	COUNTY	TOTAL SHEETS	SHEET NO.
1577	20-00052-01-PV	KENDALL	364	172
CONTRACT NO. 87783				
ILLINOIS FED. AID PROJECT				

REVISED SHEET 1/4/2023