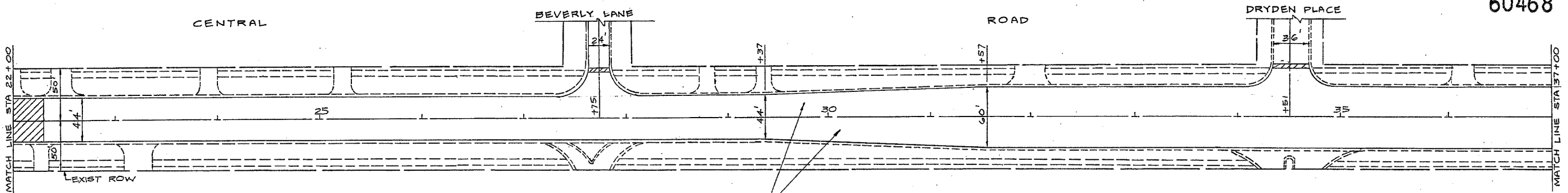
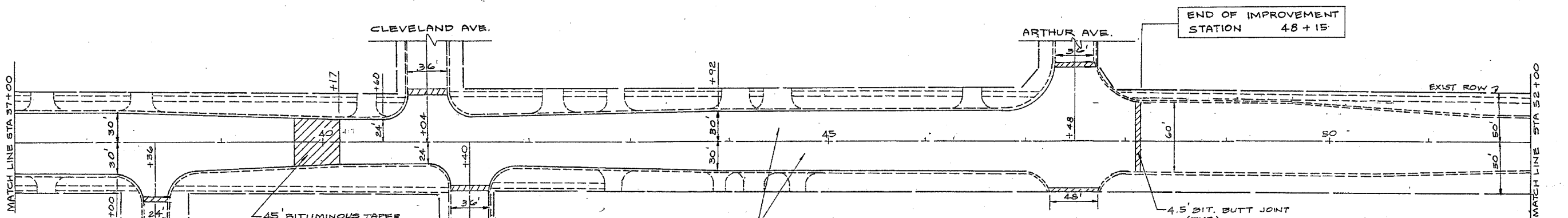


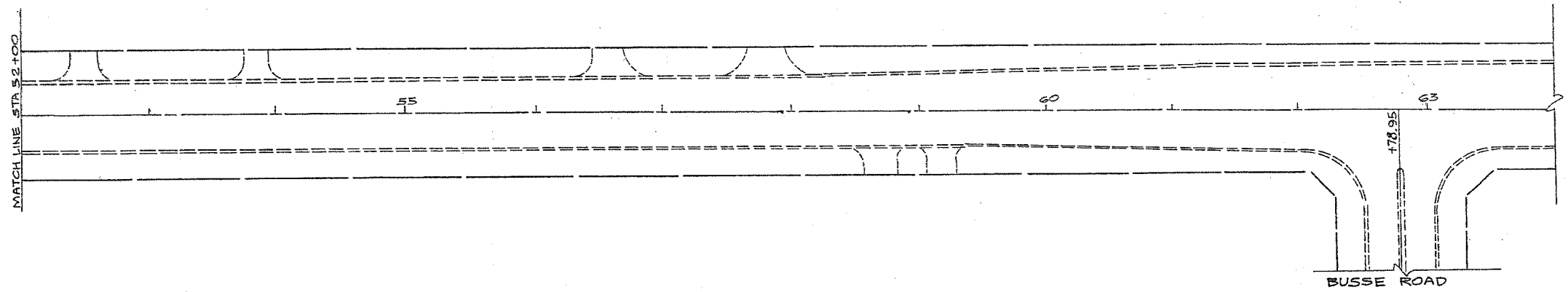
60468



PROP. POLYMERIZED LEVELING BINDER (MACHINE METHOD)
 SUPERPAVE, IL-4.75, NSQ, 1"
 PROP. POLYMERIZED BITUMINOUS CONCRETE SURFACE COURSE
 SUPERPAVE, MIX "F", N90, 1 3/4"
 STA. 21+80 TO STA. 40+17



PROP. POLYMERIZED LEVELING BINDER (MACHINE METHOD)
 SUPERPAVE, IL-4.75, NSQ, 3/4"
 PROP. SUPERPAVE, MIX "F", N90, 1 3/4"
 STA. 40+17 TO STA. 48+15



REVISIONS	
NAME	DATE

ILLINOIS DEPARTMENT OF TRANSPORTATION
CENTRAL ROAD
 KIRCHOFF RD TO BUSSE RD
 EXISTING AND PROPOSED
 ROADWAY PLANS
 SCALE: VERT. _____
 HORIZ. _____
 DATE _____ DRAWN BY _____
 CHECKED BY _____