

60810

F.A.U. RTE.	SECTION	COUNTY	TOTAL SHEETS	SHEET NO.
3524	86Y-RS-2	COOK	29	1
FED. ROAD DIST. NO. 1 ILLINOIS HIGHWAY PROJECT				

D-91-351-99

STATE OF ILLINOIS
DEPARTMENT OF TRANSPORTATION
DIVISION OF HIGHWAYS

**PLANS FOR PROPOSED
HIGHWAY**

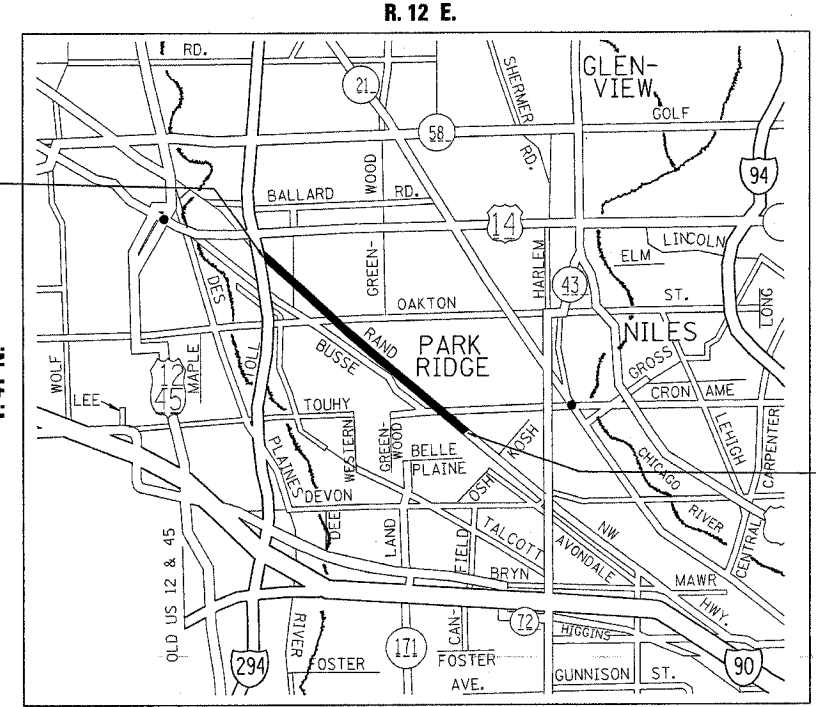
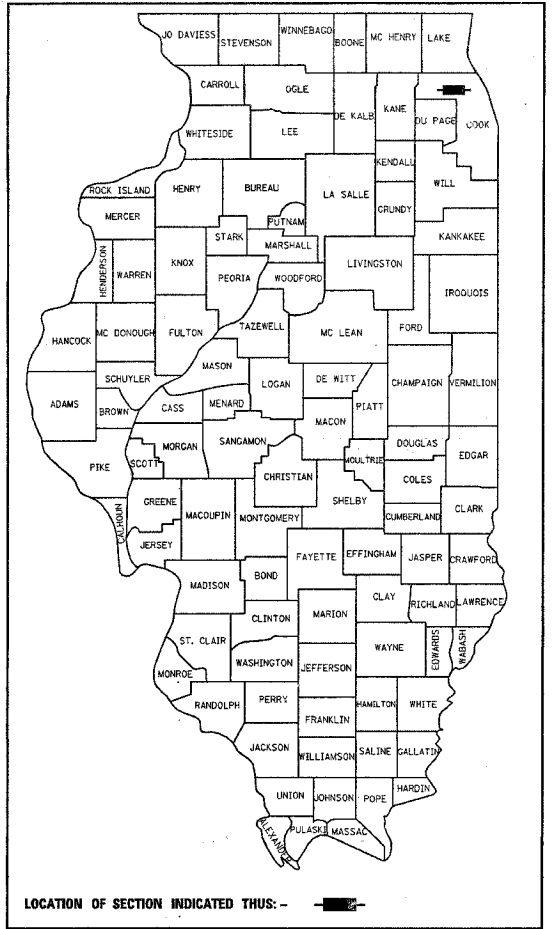
F.A.U. RTE. 3524 NORTHWEST HIGHWAY
FROM I-294 TO TOUHY AVENUE.

SECTION: 86Y-RS-2
RESURFACING (MAINTENANCE), LOOP DETECTORS
COOK COUNTY
C-91-351-99

FOR INDEX OF SHEETS, SEE SHEET NO. 2

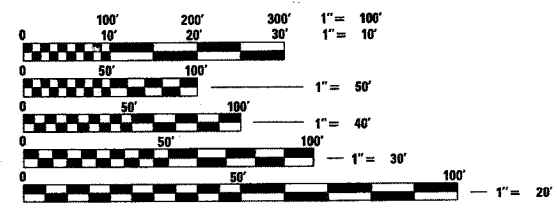
TRAFFIC DATA
1998 ADT = 16,600
SPEED LIMIT = 35 MPH

IMPROVEMENT LOCATED IN THE
CITY OF PARK RIDGE



IMPROVEMENT BEGINS
STA. 84+80

IMPROVEMENT ENDS
STA. 241+60



FULL SIZE PLANS HAVE BEEN PREPARED USING STANDARD
ENGINEERING SCALES, REDUCED SIZED PLANS WILL NOT
CONFORM TO STANDARD SCALES, IN MAKING MEASUREMENTS
ON REDUCED PLANS, THE ABOVE SCALES MAY BE USED.

CONTRACT NO. 60810

MAP SCALE 3 MILES

GROSS LENGTH OF IMPROVEMENT = 15,675 FEET = 2.97 MILE
NET LENGTH OF IMPROVEMENT = 15,675 FEET = 2.97 MILE

STATE OF ILLINOIS
DEPARTMENT OF TRANSPORTATION
DIVISION OF HIGHWAYS

SUBMITTED October 27, 20 04
Dina O'Keefe / PP
DISTRICT ENGINEER

December 10 20 04
ENGINEER OF PROJECT DEVELOPMENT AND IMPLEMENTATION

December 10 20 04
Mike Hine / PD
ENGINEER OF DESIGN AND ENVIRONMENT

December 10 20 04
Victor Maden / PD
DIRECTOR, DIVISION OF HIGHWAYS

PRINTED BY THE AUTHORITY OF THE
STATE OF ILLINOIS

FOR UTILITY INFORMATION
CALL J.U.L.I.E. 1-800-892-0123

DISTRICT 1, DESIGN PLAN PREPARATION ENGINEER K. ENG / R. SHAH (847) 705-4437