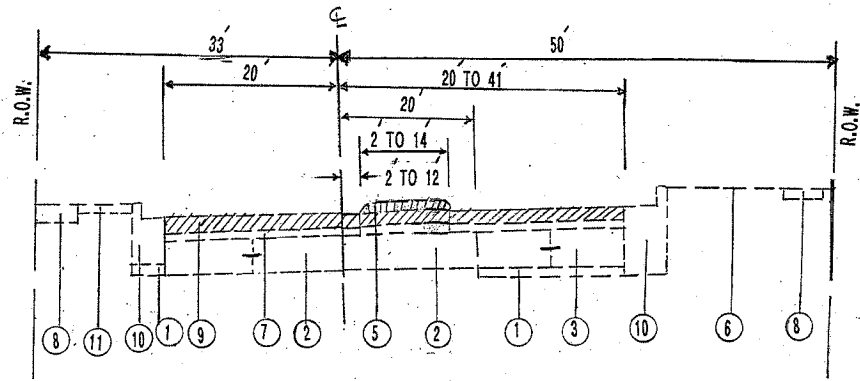
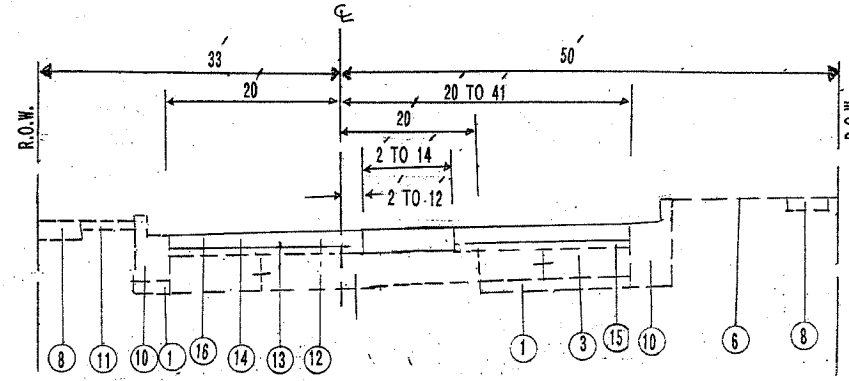


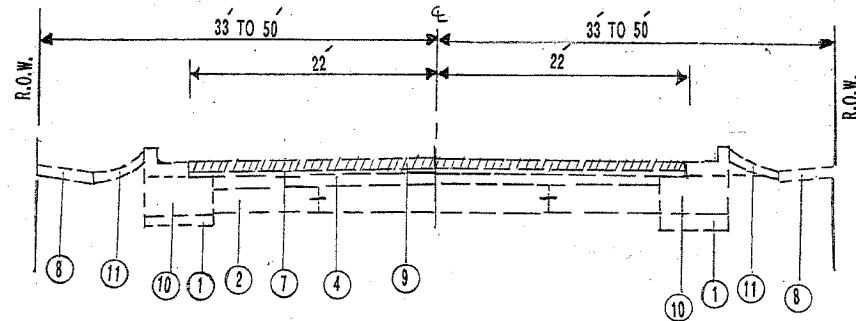
F.A.M. SECTION	COUNTY	TOTAL SHEETS	SHEET NO.
3524 86Y-RS-2	COOK	29	5
STA.	TO STA.		
FED. ROAD DIST. NO. 7	ILLINOIS	FED. AID PROJECT	



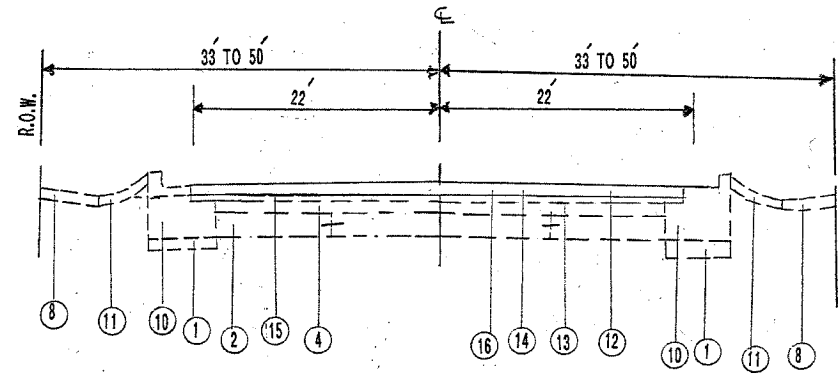
NORTHWEST HIGHWAY  
EXISTING CROSS SECTION  
FROM STA. 84 + 80 TO STA. 96 + 30



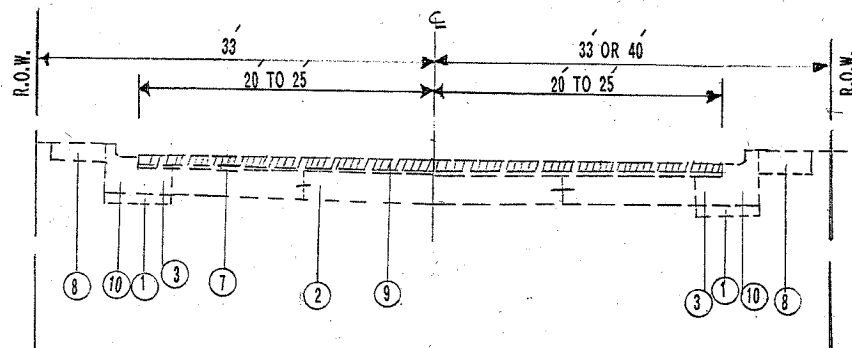
NORTHWEST HIGHWAY  
PROPOSED CROSS SECTION  
FROM STA. 84 + 80 TO STA. 96 + 30



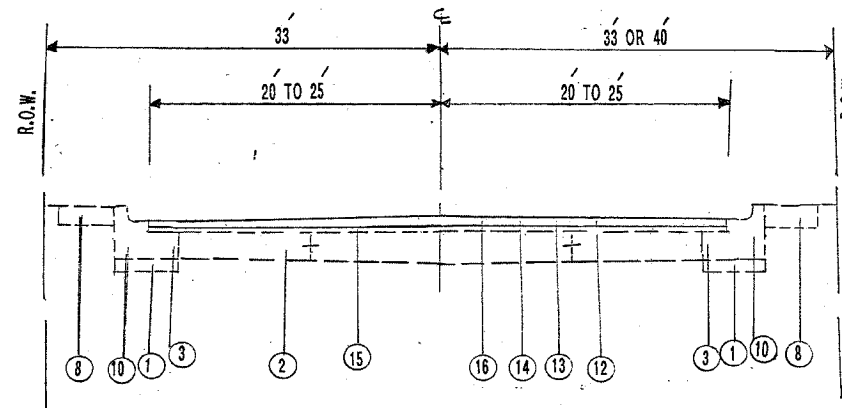
NORTHWEST HIGHWAY  
EXISTING CROSS SECTION  
FROM 96 + 30 TO STA. 130 + 00  
FROM 139 + 55 TO STA. 173 + 35



NORTHWEST HIGHWAY  
PROPOSED CROSS SECTION  
FROM 96 + 30 TO STA. 130 + 00  
FROM 139 + 55 TO STA. 173 + 35



NORTHWEST HIGHWAY  
EXISTING CROSS SECTION  
FROM 130 + 00 TO STA. 139 + 55



NORTHWEST HIGHWAY  
PROPOSED CROSS SECTION  
FROM 130 + 00 TO STA. 139 + 55

**LEGEND**

- ① EXISTING SUBBASE GRANULAR MATERIAL.
- ② EXISTING P.C.C. PAVEMENT.
- ③ EXISTING P.C.C. BASE COURSE WIDENING 9 INCHES.
- ④ EXISTING BITUMINOUS RESURFACING.
- ⑤ PROPOSED MEDIAN REMOVAL PARTIAL DEPTH (MILL, FLUSH WITH ADJACENT PAVEMENT).
- ⑥ EXISTING BITUMINOUS SHOULDER.
- ⑦ EXISTING BITUMINOUS SURFACE 3 INCHES.
- ⑧ EXISTING P.C.C. SIDEWALK 5 INCHES.
- ⑨ PROPOSED BITUMINOUS SURFACE REMOVAL 2 1/4 INCHES.
- ⑩ EXISTING CONCRETE CURB AND GUTTER TYPE B - 6.18.
- ⑪ EXISTING TOPSOIL AND SODDING.
- ⑫ PROPOSED BITUMINOUS MATERIALS (PRIME COAT).
- ⑬ PROPOSED AGGREGATE (PRIME COAT).
- ⑭ PROPOSED POLYMERIZED LEVELING BINDER (MACHINE METHOD), SUPERPAVE, IL-4.75, NSD, 3/4 INCH.
- ⑮ EXISTING BITUMINOUS SURFACE (3/4 INCH AFTER PROPOSED SURFACE REMOVAL OF 2 1/4 INCHES).
- ⑯ PROPOSED BITUMINOUS CONCRETE SURFACE COURSE SUPERPAVE, MIX D, N70, 1 1/2 INCHES.
- ⑰ EXISTING CONCRETE CURB AND GUTTER TYPE B - 6.12.
- ⑱ PROPOSED BITUMINOUS SURFACE REMOVAL 1 1/2 INCHES (VARIES FROM 1 1/2 INCHES TO 1/2 INCH FOR PARKING LANE ONLY).
- ⑳ PROPOSED BITUMINOUS CONCRETE SURFACE COURSE SUPERPAVE, MIX D, N70 (VARIES FROM 1 1/2 INCHES TO 1 INCH FOR PARKING LANE ONLY).

**MIXTURE REQUIREMENTS**

MIXTURE TYPE	AC TYPE	RAP %	AIR VOIDS	UNIT WEIGHT
BITUMINOUS CONCRETE SURFACE COURSE, SUPERPAVE, MIX "D", N70	PG 64-22	10	4% @ 70 BLOWS	110 LB/IN <sup>3</sup> /SY
POLYMERIZED LEVELING BINDER (MACHINE METHOD), SUPERPAVE, IL-4.75, NSD	SBS / SBR PG 76-28	0	2.5% @ 50 BLOWS	110 LB/IN <sup>3</sup> /SY
GLASS D PATCH (BINDER IL-19MM)	PG 64-22	15	4% @ 70 BLOWS	112 LB/IN <sup>3</sup> /SY

REVISIONS	
NAME	DATE

ILLINOIS DEPARTMENT OF TRANSPORTATION  
**NORTHWEST HIGHWAY**  
FROM I-294 TO TOUHY AVE.  
EXISTING AND PROPOSED  
TYPICAL CROSS SECTIONS  
SCALE: VERT. \_\_\_\_\_ DRAWN BY \_\_\_\_\_  
          HORIZ. \_\_\_\_\_ CHECKED BY \_\_\_\_\_  
DATE \_\_\_\_\_