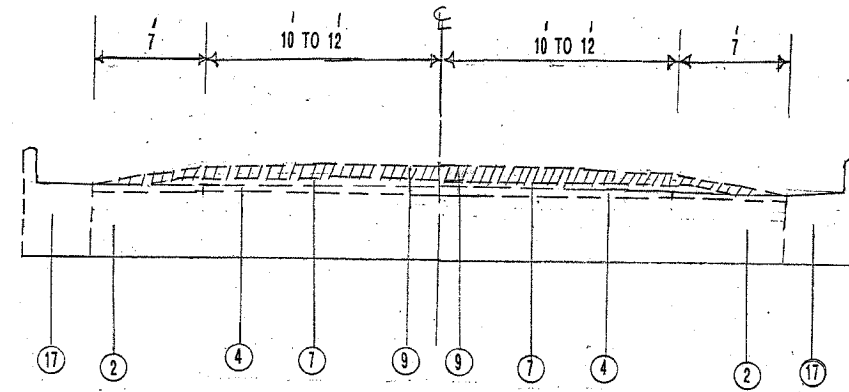
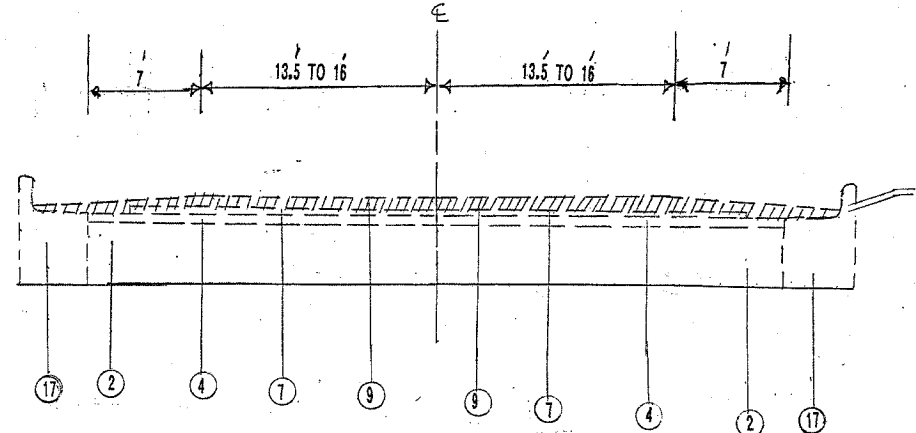


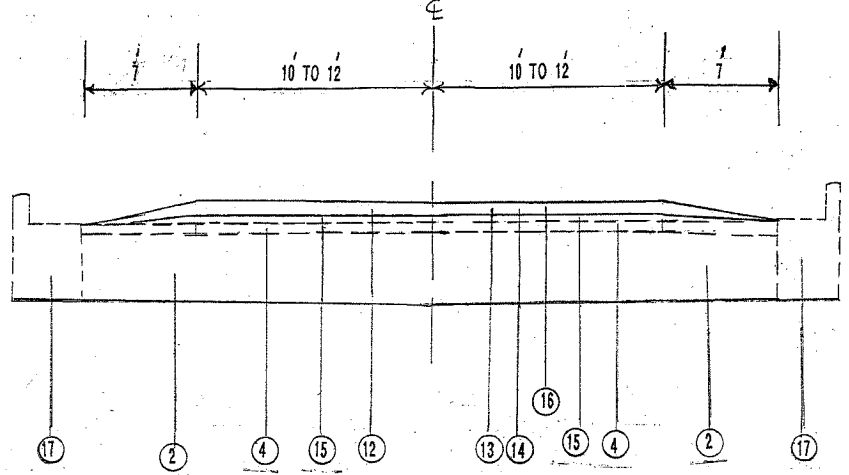
100810



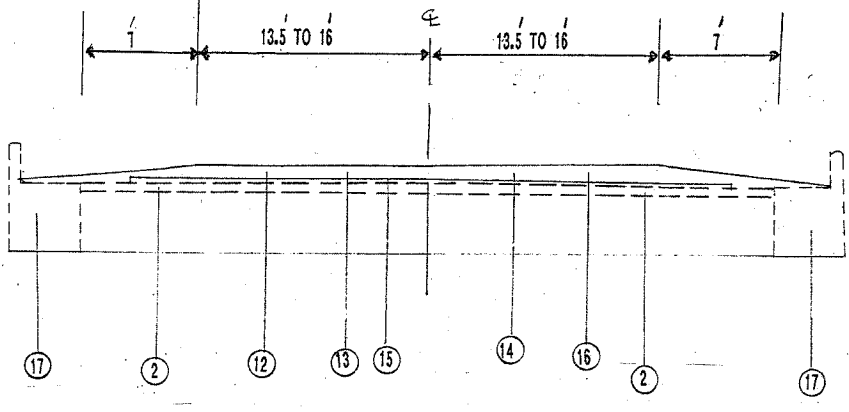
NORTHWEST HIGHWAY
EXISTING CROSS SECTION
FROM STA. 173+35 TO STA. 202+40



NORTHWEST HIGHWAY
EXISTING CROSS SECTION
FROM STA. 202+40 TO STA. 241+60



NORTHWEST HIGHWAY
PROPOSED CROSS SECTION
FROM STA. 173+35 TO STA. 202+40

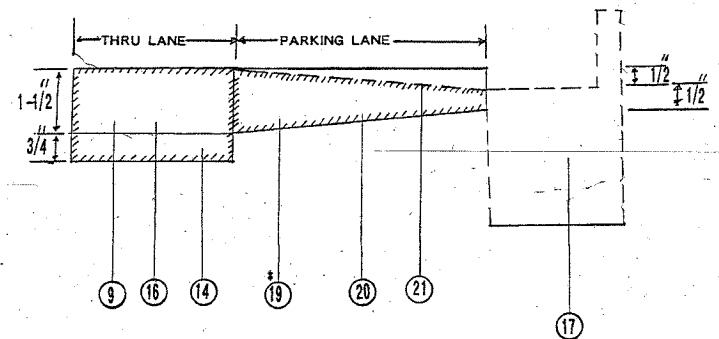


NORTHWEST HIGHWAY
PROPOSED CROSS SECTION
FROM STA. 202+40 TO STA. 241+60

- LEGEND**
- ① EXISTING SUBBASE GRANULAR MATERIAL.
 - ② EXISTING P.C.C. PAVEMENT.
 - ③ EXISTING P.C.C. BASE COURSE WIDENING 9 INCHES.
 - ④ EXISTING BITUMINOUS RESURFACING.
 - ⑤ PROPOSED MEDIAN REMOVAL PARTIAL DEPTH (MILL, FLUSH WITH ADJACENT PAVEMENT).
 - ⑥ EXISTING BITUMINOUS SHOULDER.
 - ⑦ EXISTING BITUMINOUS SURFACE 3 INCHES.
 - ⑧ EXISTING P.C.C. SIDEWALK 5 INCHES.
 - ⑨ PROPOSED BITUMINOUS SURFACE REMOVAL 2 1/4 INCHES.
 - ⑩ EXISTING CONCRETE CURB AND GUTTER TYPE B - 6.18.
 - ⑪ EXISTING TOPSOIL AND SODDING.
 - ⑫ PROPOSED BITUMINOUS MATERIALS (PRIME COAT).
 - ⑬ PROPOSED AGGREGATE (PRIME COAT).
 - ⑭ PROPOSED POLYMERIZED LEVELING BINDER (MACHINE METHOD), SUPERPAVE IL-4.75, NS0, 1/2 INCH.
 - ⑮ EXISTING BITUMINOUS SURFACE (1/2 INCH AFTER PROPOSED SURFACE REMOVAL OF 2 1/4 INCHES).
 - ⑯ PROPOSED BITUMINOUS CONCRETE SURFACE COURSE SUPERPAVE, MIX D, N70, 1 1/2 INCHES.
 - ⑰ EXISTING CONCRETE CURB AND GUTTER TYPE B - 6.12.
 - ⑱ PROPOSED BITUMINOUS SURFACE REMOVAL 1 1/2 INCHES (VARIES FROM 1 1/2 INCHES TO 1/2 INCH FOR PARKING LANE ONLY).
 - ⑳ PROPOSED BITUMINOUS CONCRETE SURFACE COURSE SUPERPAVE, MIX D, N70, (VARIES FROM 1 1/2 INCHES TO 1 INCH FOR PARKING LANE ONLY).
 - ㉑ EXISTING TOP OF BITUMINOUS SURFACE

MIXTURE REQUIREMENTS

MIXTURE TYPE	AC TYPE	RAP %	AIR VOIDS	UNIT WEIGHT
BITUMINOUS CONCRETE SURFACE COURSE, SUPERPAVE, MIX "D", N70	PG 64-22	10	4% @ 70 BLOWS	110 LB/IN ³ /SY
POLYMERIZED LEVELING BINDER (MACHINE METHOD), SUPERPAVE, IL-4.75, NS0	SBS / SBR PG 76-28	0	2.5% @ 50 BLOWS	110 LB/IN ³ /SY
CLASS D PATCH (BINDER IL-4.75)	PG 64-22	15	4% @ 70 BLOWS	112 LB/IN ³ /SY



* THIS WILL BE PAID AS BITUMINOUS SURFACE REMOVAL 1-1/2"

REVISIONS

NAME	DATE

ILLINOIS DEPARTMENT OF TRANSPORTATION
NORTHWEST HIGHWAY
FROM I-294 TO TOUHY AVE.
EXISTING AND PROPOSED
TYPICAL CROSS SECTIONS

SCALE: VERT. _____ DRAWN BY _____
HORIZ. _____ CHECKED BY _____
DATE _____

B.L.H. INDUSTRIES 88818