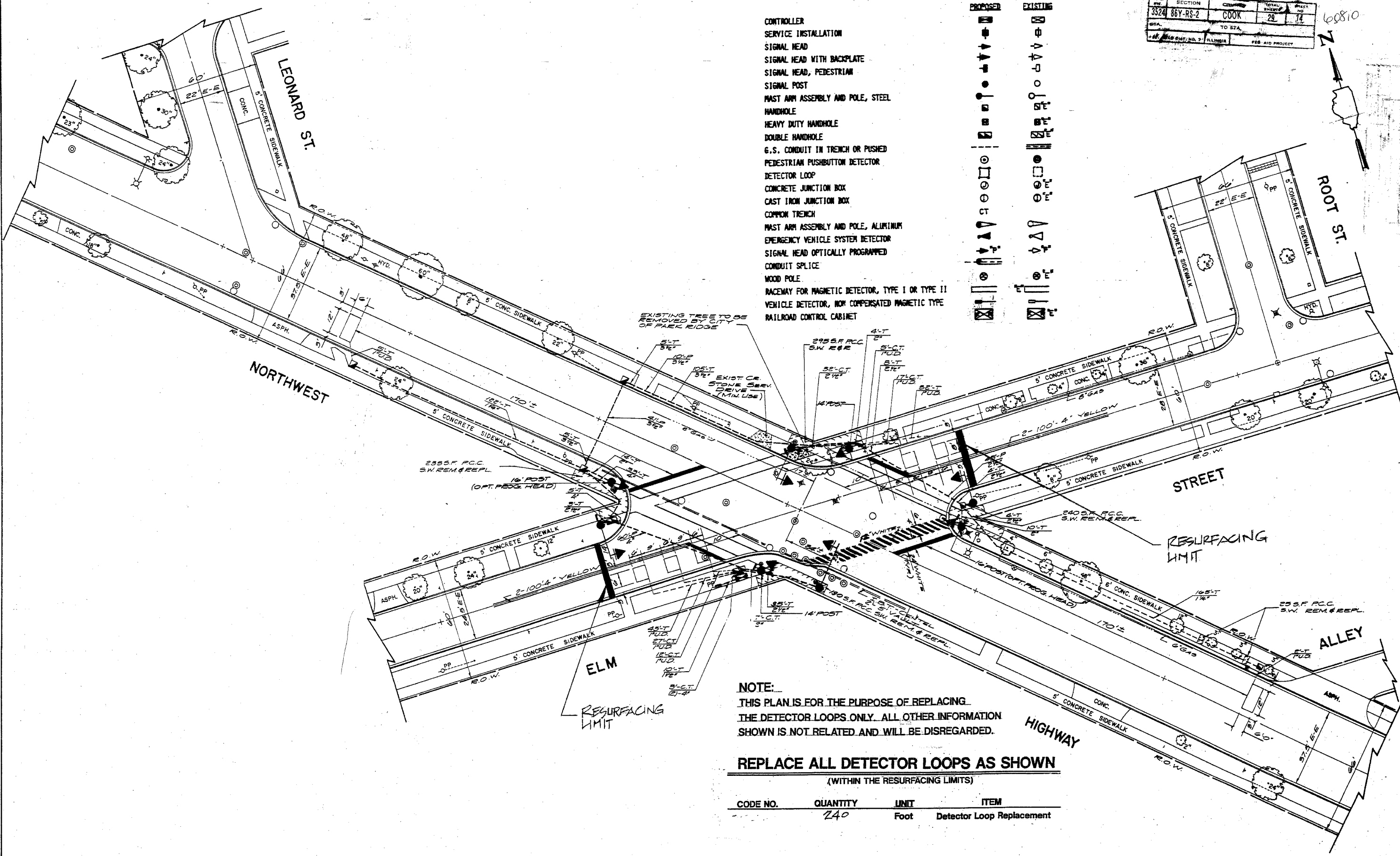


SECTION	3524	86Y-RS-2	COOK	28	74
DATE					
PROJECT	60810				

TRAFFIC SIGNAL LEGEND

- | | | |
|--|----------|----------|
| CONTROLLER | PROPOSED | EXISTING |
| SERVICE INSTALLATION | ⊠ | ⊠ |
| SIGNAL HEAD | ⊠ | ⊠ |
| SIGNAL HEAD WITH BACKPLATE | ⊠ | ⊠ |
| SIGNAL HEAD, PEDESTRIAN | ⊠ | ⊠ |
| SIGNAL POST | ⊠ | ⊠ |
| MAST ARM ASSEMBLY AND POLE, STEEL | ⊠ | ⊠ |
| HANDHOLE | ⊠ | ⊠ |
| HEAVY DUTY HANDHOLE | ⊠ | ⊠ |
| DOUBLE HANDHOLE | ⊠ | ⊠ |
| G.S. CONDUIT IN TRENCH OR PUSHED | ⊠ | ⊠ |
| PEDESTRIAN PUSHBUTTON DETECTOR | ⊠ | ⊠ |
| DETECTOR LOOP | ⊠ | ⊠ |
| CONCRETE JUNCTION BOX | ⊠ | ⊠ |
| CAST IRON JUNCTION BOX | ⊠ | ⊠ |
| COMMON TRENCH | ⊠ | ⊠ |
| MAST ARM ASSEMBLY AND POLE, ALUMINUM | ⊠ | ⊠ |
| EMERGENCY VEHICLE SYSTEM DETECTOR | ⊠ | ⊠ |
| SIGNAL HEAD OPTICALLY PROGRAMMED | ⊠ | ⊠ |
| CONDUIT SPLICE | ⊠ | ⊠ |
| WOOD POLE | ⊠ | ⊠ |
| RACEWAY FOR MAGNETIC DETECTOR, TYPE I OR TYPE II | ⊠ | ⊠ |
| VEHICLE DETECTOR, NON COMPENSATED MAGNETIC TYPE | ⊠ | ⊠ |
| RAILROAD CONTROL CABINET | ⊠ | ⊠ |



NOTE:
 THIS PLAN IS FOR THE PURPOSE OF REPLACING THE DETECTOR LOOPS ONLY. ALL OTHER INFORMATION SHOWN IS NOT RELATED AND WILL BE DISREGARDED.

REPLACE ALL DETECTOR LOOPS AS SHOWN
 (WITHIN THE RESURFACING LIMITS)

CODE NO.	QUANTITY	UNIT	ITEM
	240	Foot	Detector Loop Replacement

Ciorba Group, Inc.
 CONSULTING ENGINEERS
 5507 N. CUMBERLAND AVENUE
 CHICAGO, ILLINOIS 60656
 (312) 775-4009

SCALE	1"=20 FT.
DESIGNED BY	DATE
DRAWN BY	DATE
CHECKED BY	DATE
BOOK	PAGE
DATE	BY
REVISIONS	

CITY OF PARK RIDGE, ILLINOIS
 TRAFFIC SIGNAL INSTALLATION AT THE
 INTERSECTION OF NORTHWEST HWY. & ELM ST.
 DETECTOR LOOP REPLACEMENT

DRAWING NO. 5 OF 5