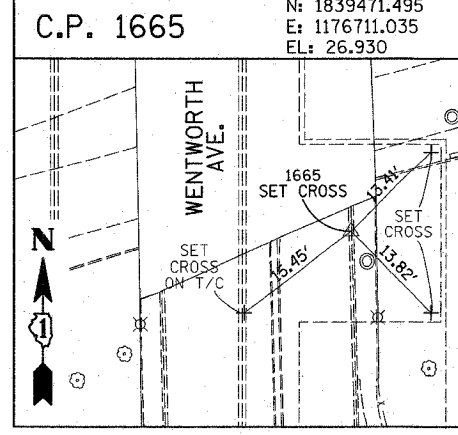
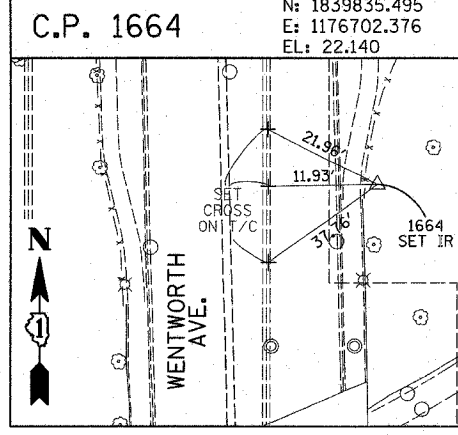
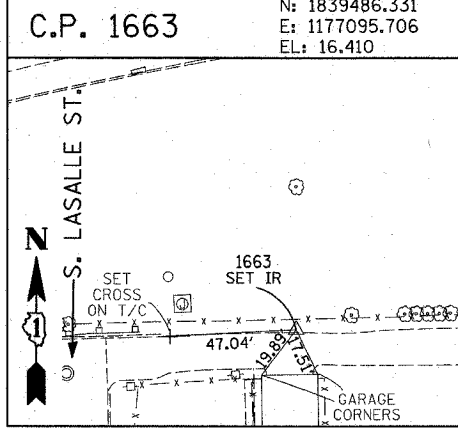
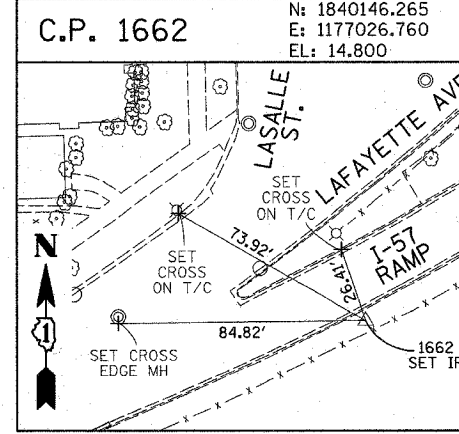
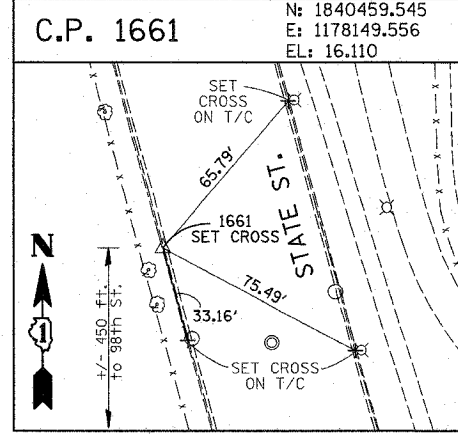
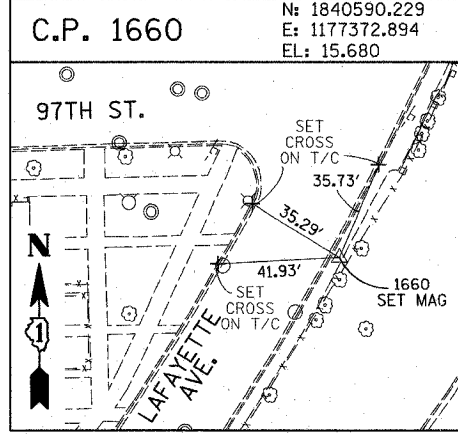
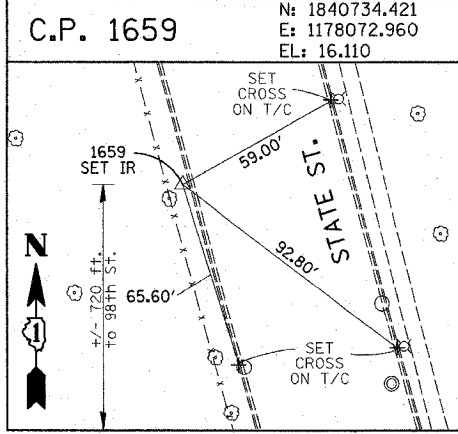
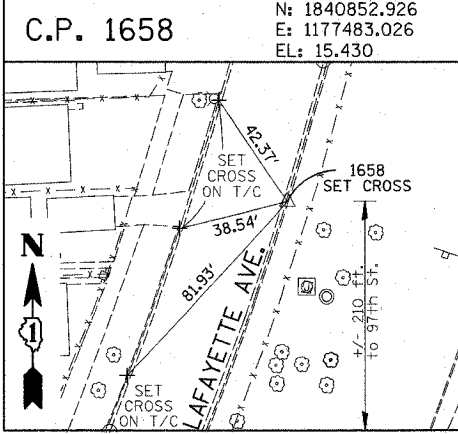
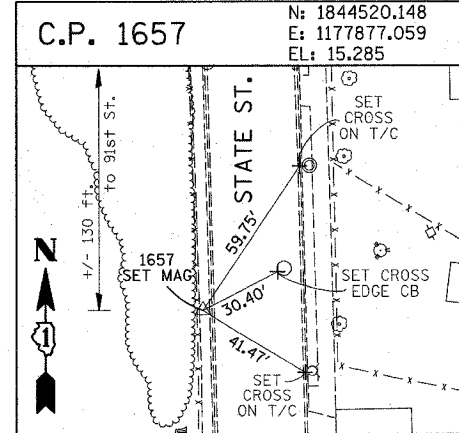
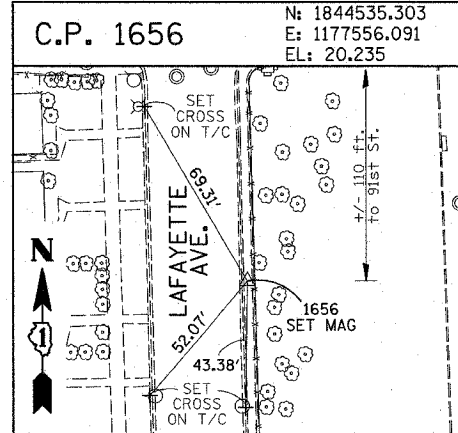
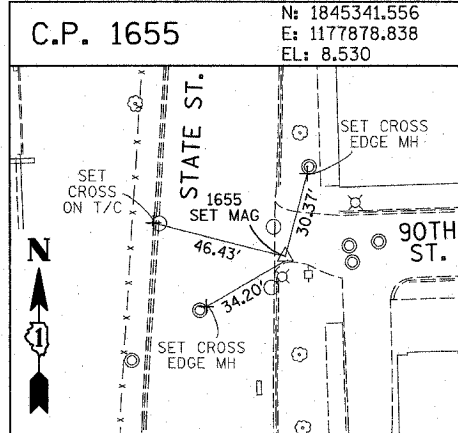
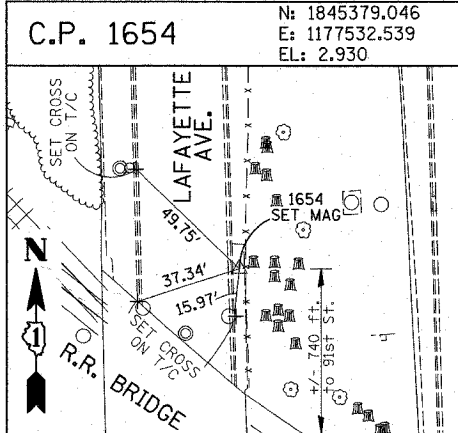
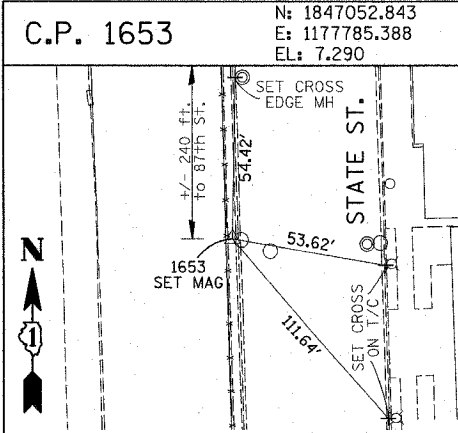
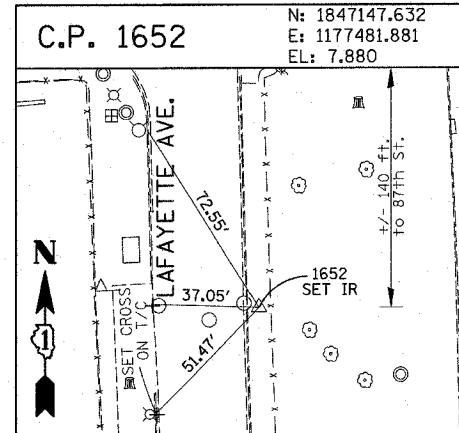
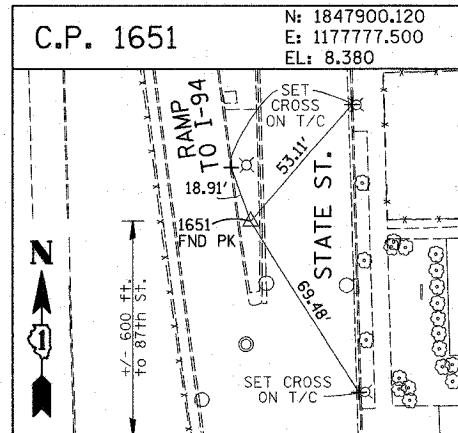
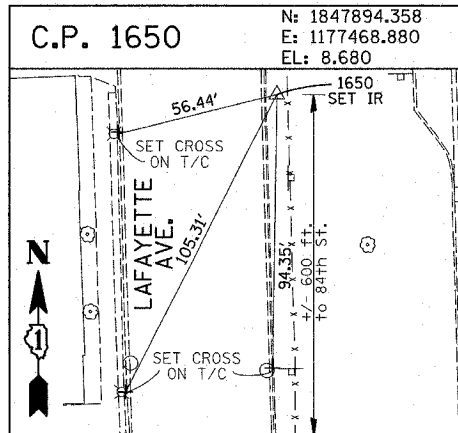
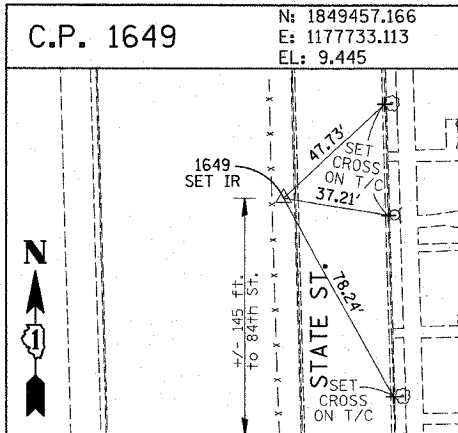
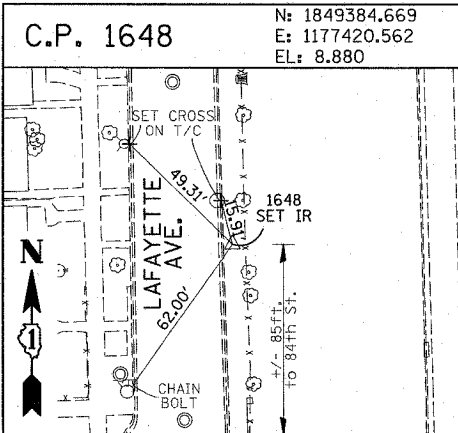


|                     |                           |        |              |           |
|---------------------|---------------------------|--------|--------------|-----------|
| F.A.I. RTE.         | SECTION                   | COUNTY | TOTAL SHEETS | SHEET NO. |
| 90/94               | 2003-0311                 | COOK   | 976          | 17        |
| STA.                | TO STA.                   |        |              |           |
| FED. ROAD DIST. NO. | ILLINOIS FED. AID PROJECT |        |              |           |

62583



**American Surveying Consultants, P.C.**  
 1037 First St. Suite 1000, IL 61801  
 618-242-2211

| REVISIONS |      |
|-----------|------|
| NAME      | DATE |
|           |      |
|           |      |
|           |      |
|           |      |
|           |      |

ILLINOIS DEPARTMENT OF TRANSPORTATION  
 F.A.I. 90/94 (DAN RYAN EXPRESSWAY)  
 31st STREET TO I-57

**SURVEY TIES FOR CONTROL POINTS**  
 SHEET 3 OF 4

SCALE: 1"=30'  
 DATE: OCTOBER 29, 2004

DRAWN BY: GSP  
 CHECKED BY: MMW

10/15/2004 01:54:06 PM