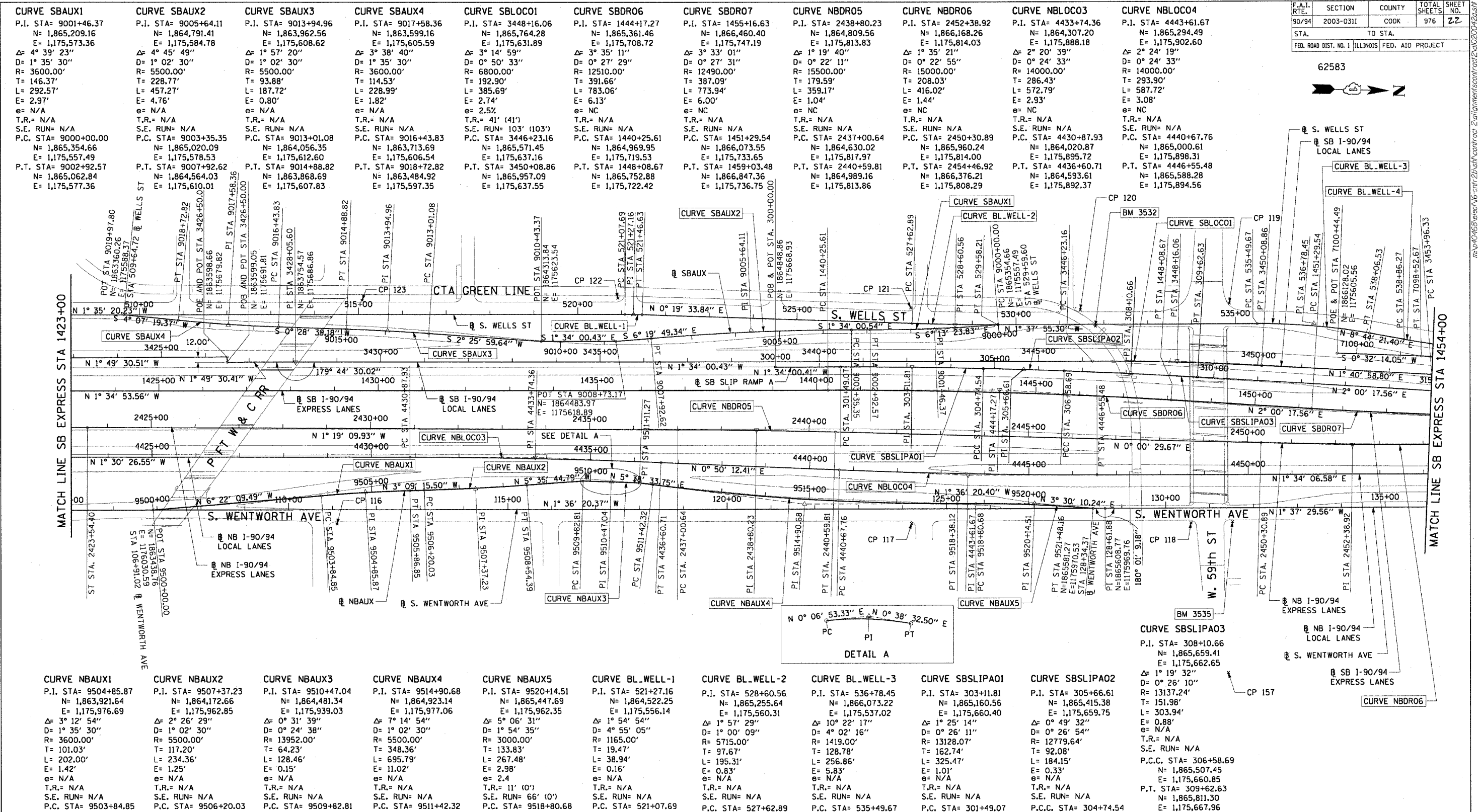
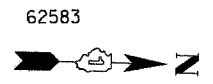
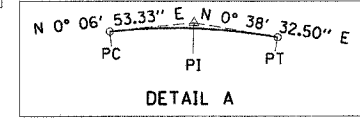


F.A.I. RTE.	SECTION	COUNTY	TOTAL SHEETS	SHEET NO.
90/94	2003-0311	COOK	976	ZZ
STA.		TO STA.		
FED. ROAD DIST. NO. 1		ILLINOIS		FED. AID PROJECT



CURVE NBAUX1 P.I. STA= 9504+85.87 N= 1,863,921.64 E= 1,175,976.69 Δ= 3° 12' 54" D= 1° 35' 30" R= 3600.00' T= 101.03' L= 202.00' E= 1.42' e= N/A T.R.= N/A S.E. RUN= N/A P.C. STA= 9503+84.85 N= 1,863,821.23 E= 1,175,987.89 P.T. STA= 9505+86.85 N= 1,864,022.51 E= 1,175,971.13	CURVE NBAUX2 P.I. STA= 9507+37.23 N= 1,864,172.66 E= 1,175,962.85 Δ= 2° 26' 29" D= 1° 02' 30" R= 5500.00' T= 117.20' L= 234.36' E= 1.25' e= N/A T.R.= N/A S.E. RUN= N/A P.C. STA= 9506+20.03 N= 1,864,055.64 E= 1,175,969.30 P.T. STA= 9508+54.39 N= 1,864,289.30 E= 1,175,951.42	CURVE NBAUX3 P.I. STA= 9510+47.04 N= 1,864,481.34 E= 1,175,939.03 Δ= 0° 31' 39" D= 0° 24' 38" R= 13952.00' T= 64.23' L= 128.46' E= 0.15' e= N/A T.R.= N/A S.E. RUN= N/A P.C. STA= 9509+82.81 N= 1,864,417.11 E= 1,175,938.90 P.T. STA= 9511+11.27 N= 1,864,545.57 E= 1,175,939.75	CURVE NBAUX4 P.I. STA= 9514+90.68 N= 1,864,923.14 E= 1,175,977.06 Δ= 7° 14' 54" D= 1° 02' 30" R= 5500.00' T= 348.36' L= 695.79' E= 11.02' e= N/A T.R.= N/A S.E. RUN= N/A P.C. STA= 9511+42.32 N= 1,864,576.47 E= 1,175,942.80 P.T. STA= 9518+38.12 N= 1,865,271.36 E= 1,175,967.30	CURVE NBAUX5 P.I. STA= 9520+14.51 N= 1,865,447.69 E= 1,175,962.35 Δ= 5° 06' 31" D= 1° 54' 35" R= 3000.00' T= 133.83' L= 267.48' E= 2.98' e= N/A T.R.= 11' (0') S.E. RUN= 66' (0') P.C. STA= 9518+80.68 N= 1,865,313.91 E= 1,175,966.10 P.T. STA= 9521+48.16 N= 1,865,581.27 E= 1,175,970.53	CURVE BL_WELL-1 P.I. STA= 521+27.16 N= 1,864,522.25 E= 1,175,556.14 Δ= 1° 54' 54" D= 4° 55' 05" R= 3000.00' T= 19.47' L= 38.94' E= 0.16' e= N/A T.R.= N/A S.E. RUN= N/A P.C. STA= 521+07.69 N= 1,864,502.79 E= 1,175,556.68 P.T. STA= 521+46.63 N= 1,864,541.72 E= 1,175,556.25	CURVE BL_WELL-2 P.I. STA= 528+60.56 N= 1,865,255.64 E= 1,175,560.31 Δ= 1° 57' 29" D= 1° 00' 09" R= 3000.00' T= 97.67' L= 195.31' E= 0.83' e= N/A T.R.= N/A S.E. RUN= N/A P.C. STA= 527+62.89 N= 1,865,157.98 E= 1,175,559.75 P.T. STA= 529+58.21 N= 1,865,353.27 E= 1,175,557.53	CURVE BL_WELL-3 P.I. STA= 536+78.45 N= 1,866,073.22 E= 1,175,537.02 Δ= 1° 22' 17" D= 4° 02' 16" R= 1419.00' T= 128.78' L= 256.86' E= 5.83' e= N/A T.R.= N/A S.E. RUN= N/A P.C. STA= 535+49.67 N= 1,865,944.49 E= 1,175,540.68 P.T. STA= 538+06.53 N= 1,866,200.51 E= 1,175,556.58	CURVE SBSLIPA01 P.I. STA= 303+11.81 N= 1,865,160.56 E= 1,175,660.40 Δ= 0° 26' 11" D= 0° 26' 11" R= 13128.07' T= 162.74' L= 325.47' E= 1.01' e= N/A T.R.= N/A S.E. RUN= N/A P.C. STA= 301+49.07 N= 1,864,997.88 E= 1,175,664.85 P.T. STA= 304+74.54 N= 1,865,323.30 E= 1,175,659.99	CURVE SBSLIPA02 P.I. STA= 305+66.61 N= 1,865,415.38 E= 1,175,659.75 Δ= 0° 49' 32" D= 0° 26' 10" R= 13137.24' T= 151.98' L= 303.94' E= 0.88' e= N/A T.R.= N/A S.E. RUN= N/A P.C.C. STA= 306+58.69 N= 1,865,507.45 E= 1,175,660.85 P.T. STA= 309+62.63 N= 1,865,811.30 E= 1,175,667.96
--	--	--	---	--	--	---	--	---	---



NOTES:

1. AVERAGE GRID TO GROUND CONVERSION FACTOR = 1.000010988654360
2. FOR BENCH MARK INFORMATION, SEE SHEET 1 OF ALIGNMENT PLAN SHEETS.

REVISIONS	
NAME	DATE

ILLINOIS DEPARTMENT OF TRANSPORTATION
 F.A.I. 90/94 (DAN RYAN EXPRESSWAY)
 31st STREET TO I-57
ALIGNMENT PLAN

SCALE: 1"=100'
 DATE: October 29, 2004
 DRAWN BY: NJH/AMM
 CHECKED BY: JAL/MS



10/15/2004 03:54:00 PM