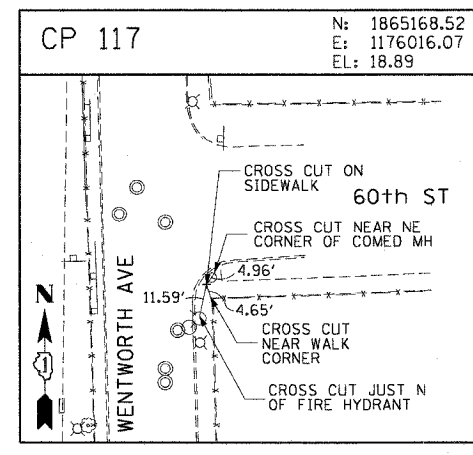
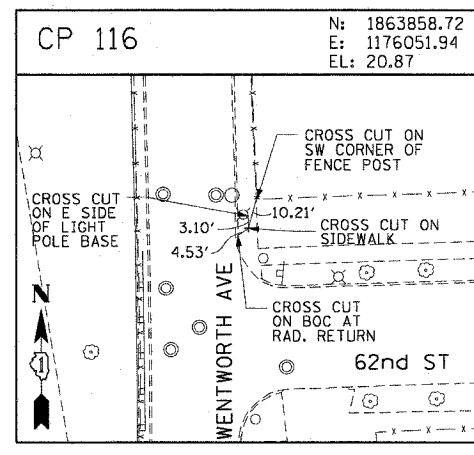
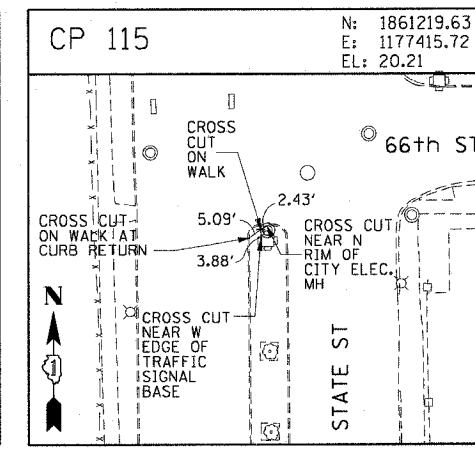
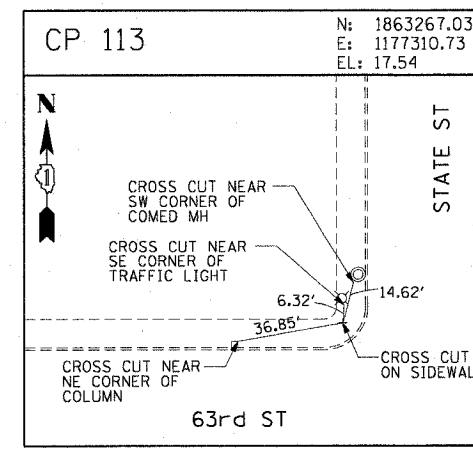
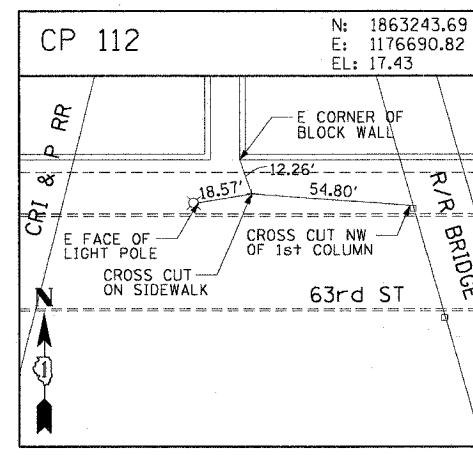
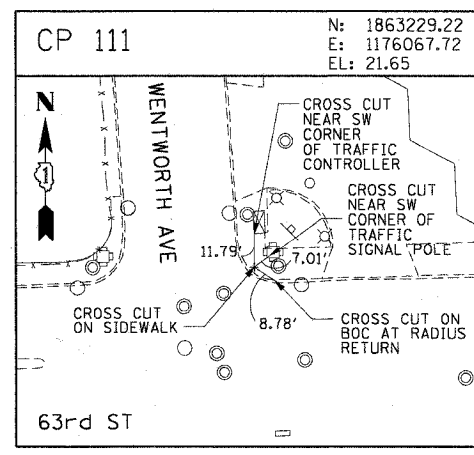
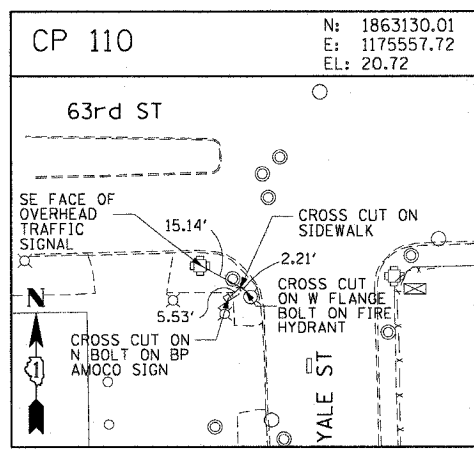
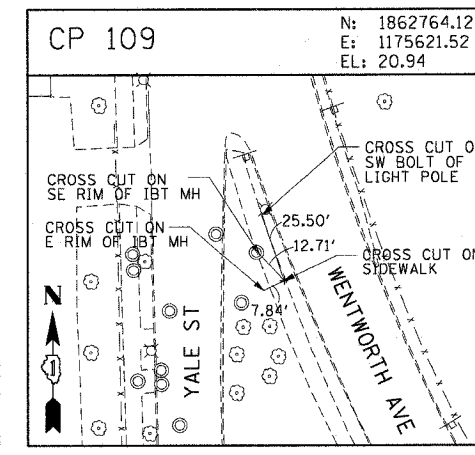
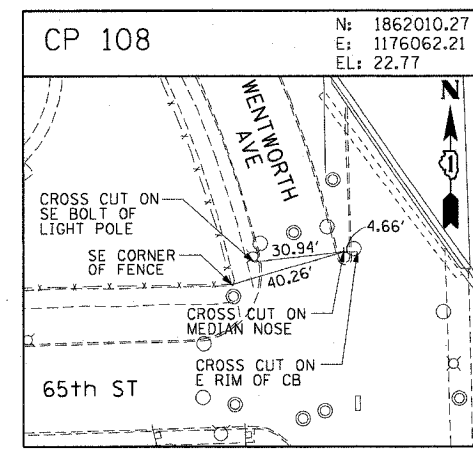
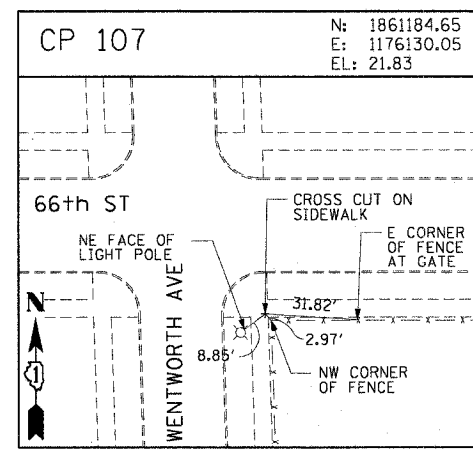
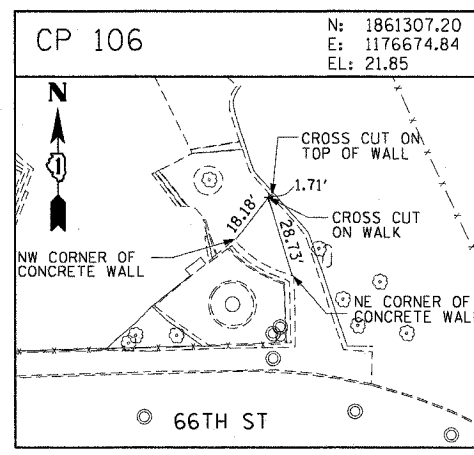
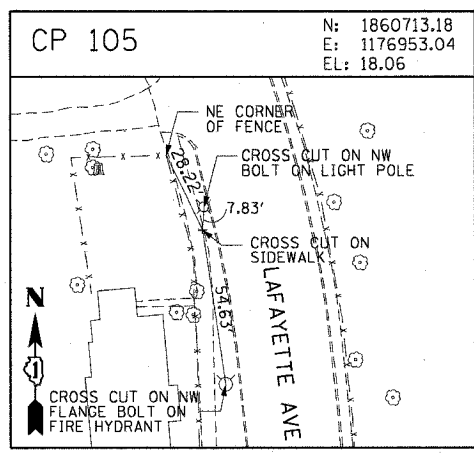
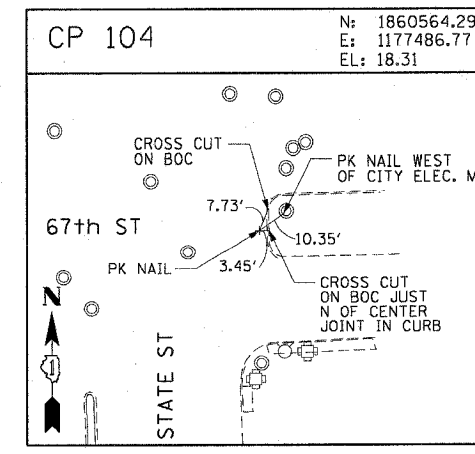
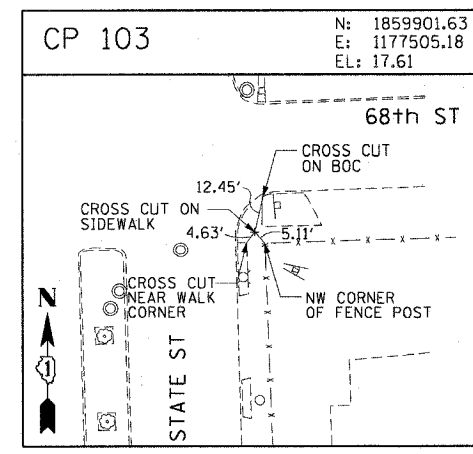
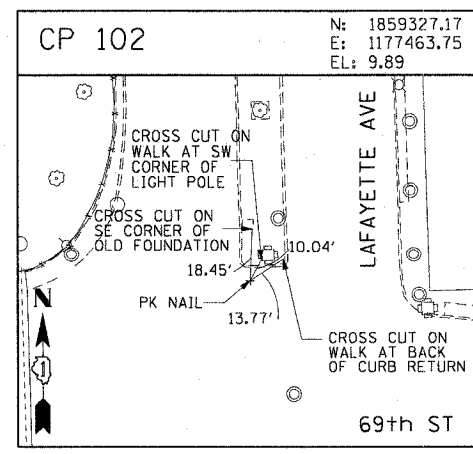
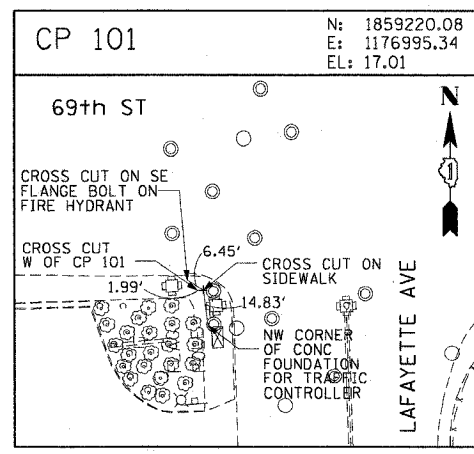
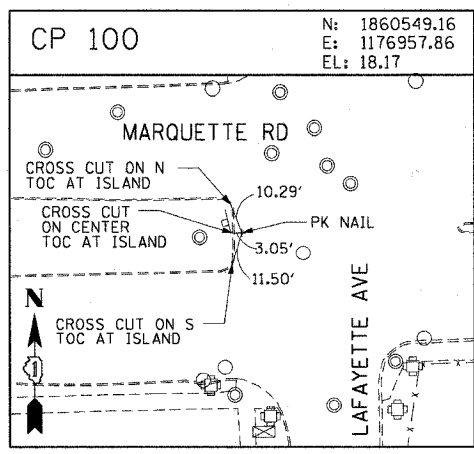


F.A.I. RTE.	SECTION	COUNTY	TOTAL SHEETS	SHEET NO.
90/94	2003-0311	COOK	976	26
STA.		TO STA.		
FED. ROAD DIST. NO. 1		ILLINOIS FED. AID PROJECT		

62583



REVISIONS	
NAME	DATE

ILLINOIS DEPARTMENT OF TRANSPORTATION
 F.A.I. 90/94 (DAN RYAN EXPRESSWAY)
 31st STREET TO I-57

SURVEY TIES AND CONTROL POINTS

SCALE: 1"=30'
 DATE: October 29, 2004

DRAWN BY: MRK
 CHECKED BY: JAL

m:\p40466\elec\16\cont_20\stn\cont.rvt 2\alignments\cont.rvt 2\02101020.rvt 03/15/2004 03:54:43 PM