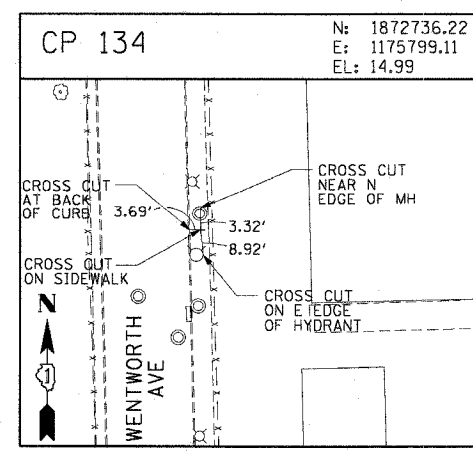
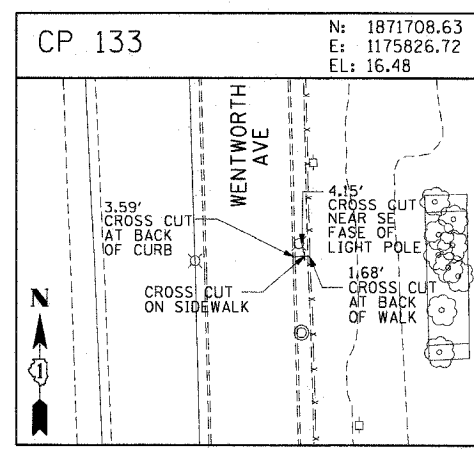
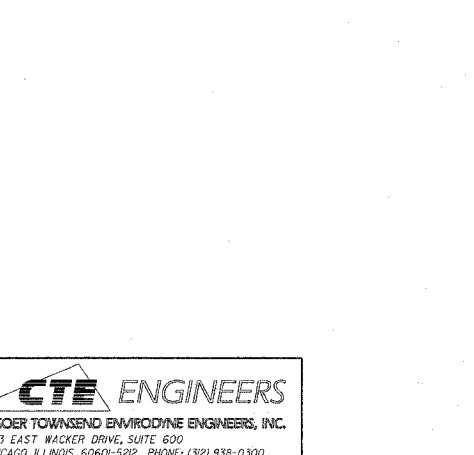
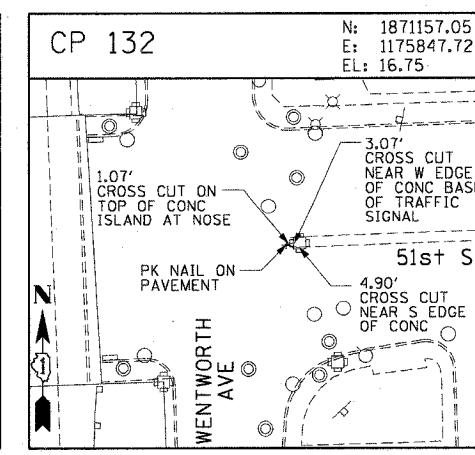
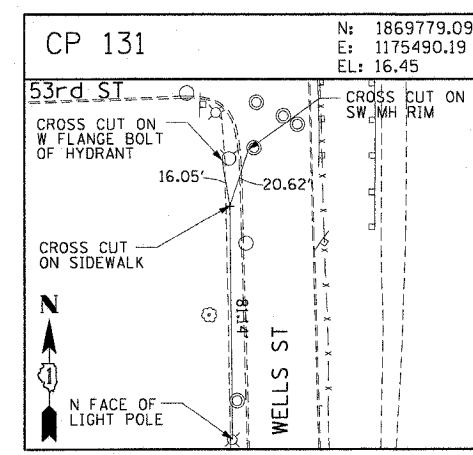
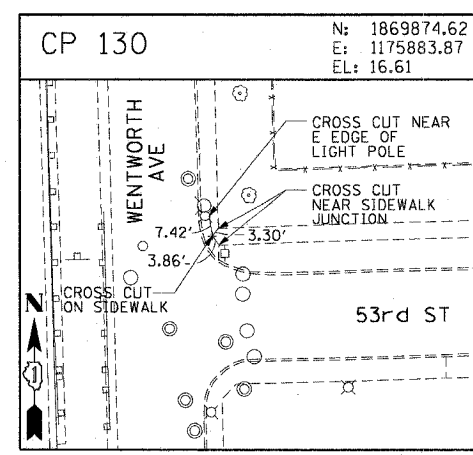
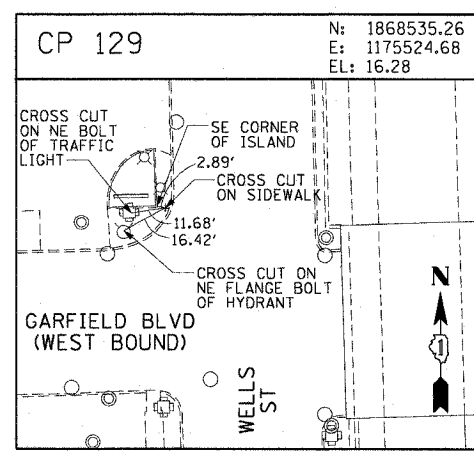
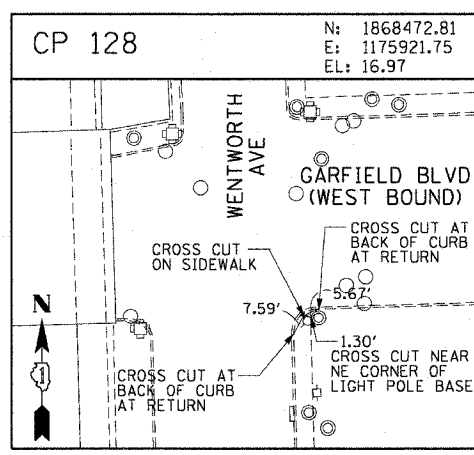
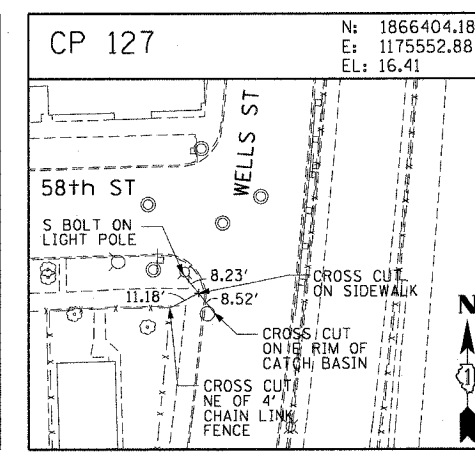
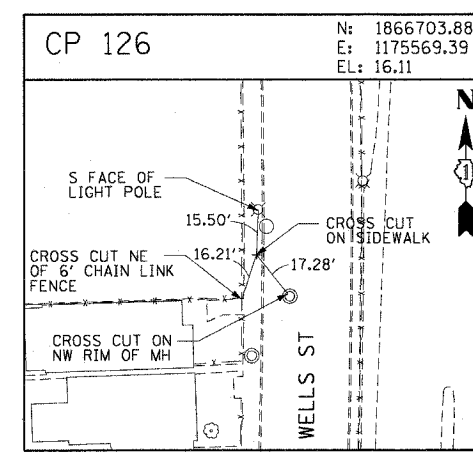
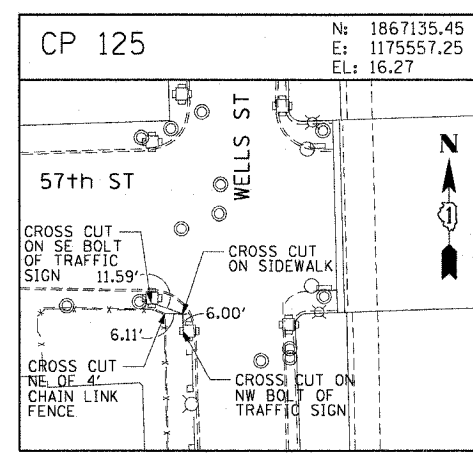
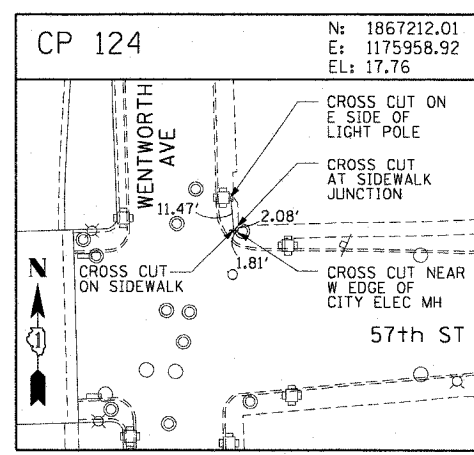
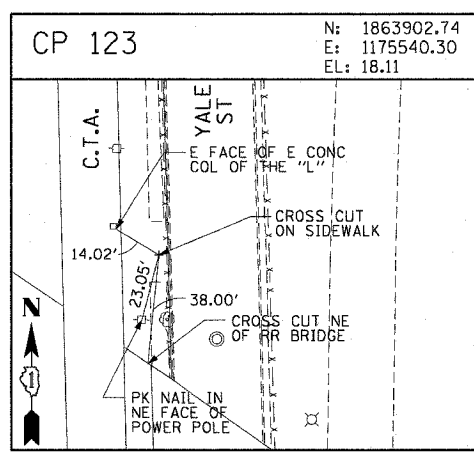
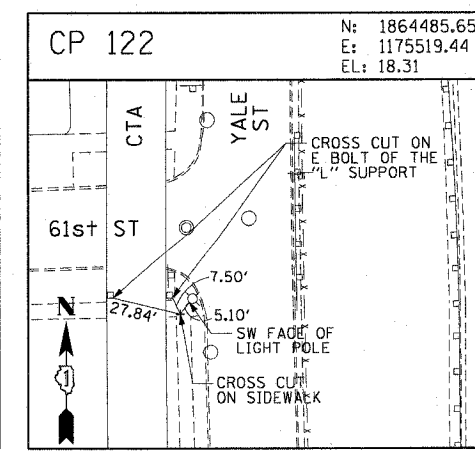
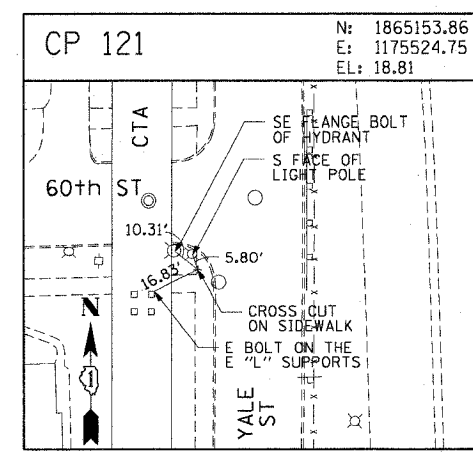
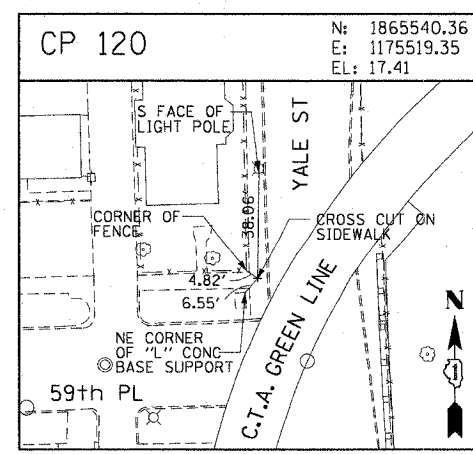
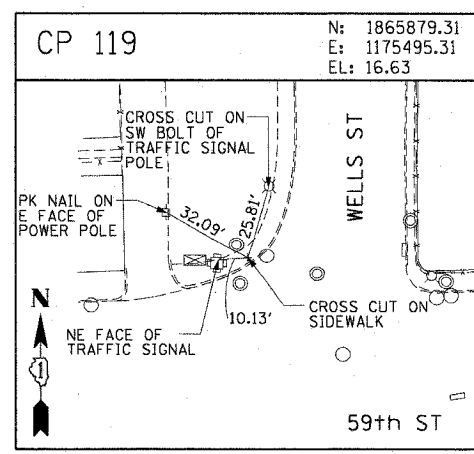
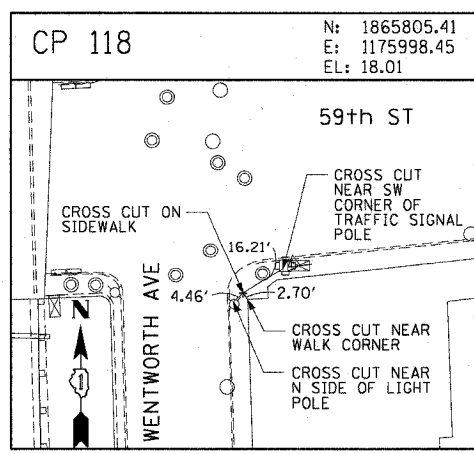


F.A.I. RT.:	SECTION	COUNTY	TOTAL SHEETS	SHEET NO.
90/94	2003-0311	COOK	976	27
STA.	TO STA.			
FED. ROAD DIST. NO. 1 ILLINOIS FED. AID PROJECT				

62583



REVISIONS	
NAME	DATE

ILLINOIS DEPARTMENT OF TRANSPORTATION
F.A.I. 90/94 (DAN RYAN EXPRESSWAY)
31st STREET TO I-57

SURVEY TIES AND CONTROL POINTS

SCALE: 1"=30'
DATE: October 29, 2004

DRAWN BY: MRK
CHECKED BY: JAL

m:\p40669\elect\16-cm\120\st\control 2\alignments\control\2\102\2a.stn 10/15/2004 03:51:44 PM