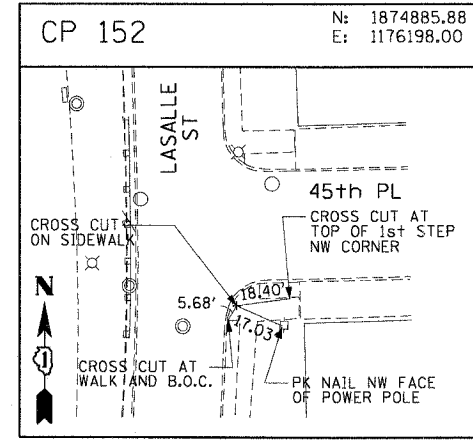
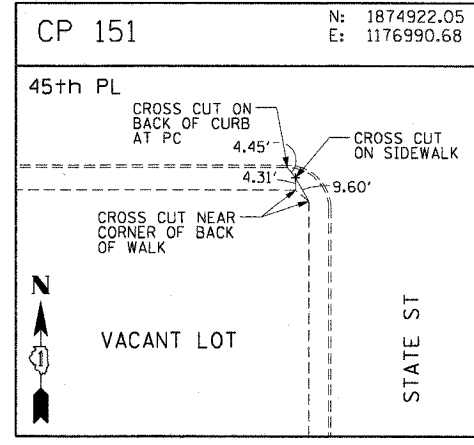
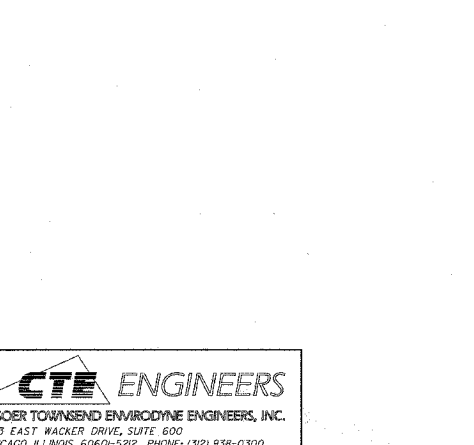
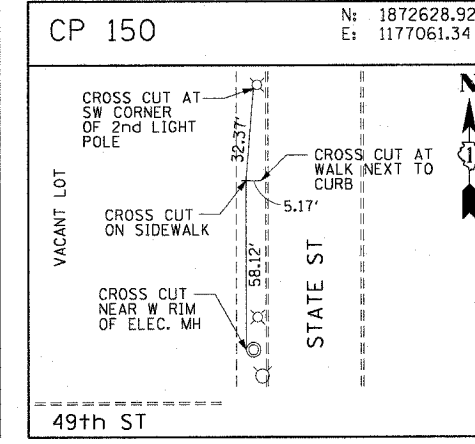
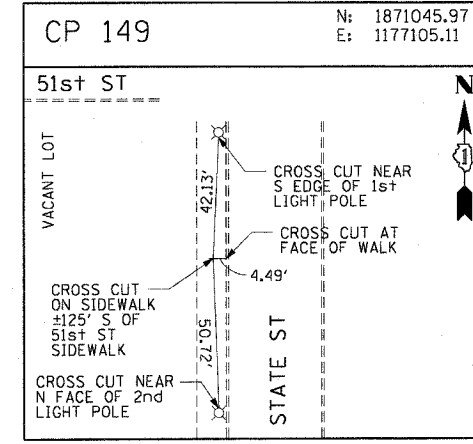
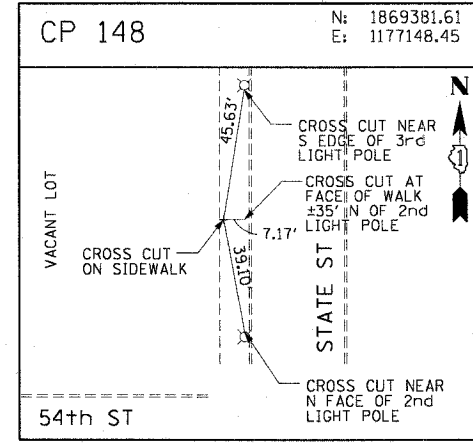
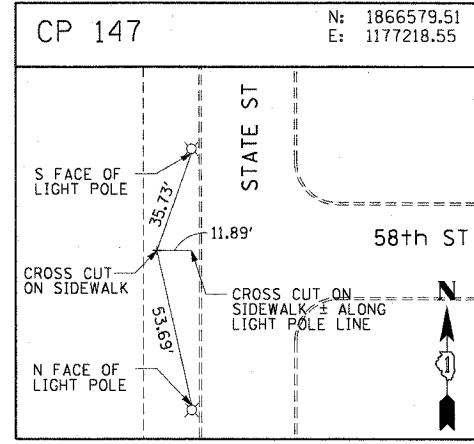
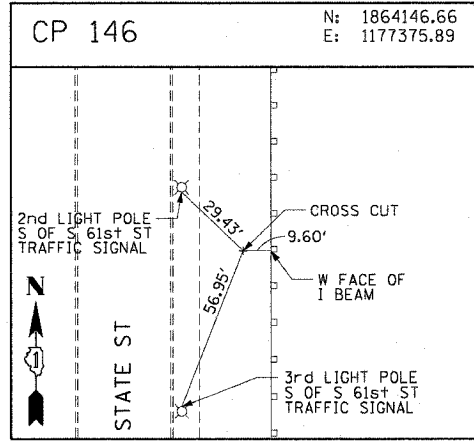
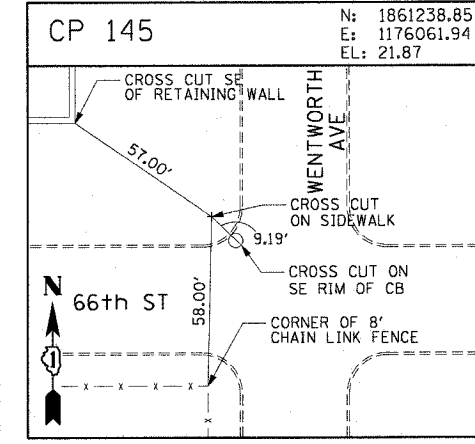
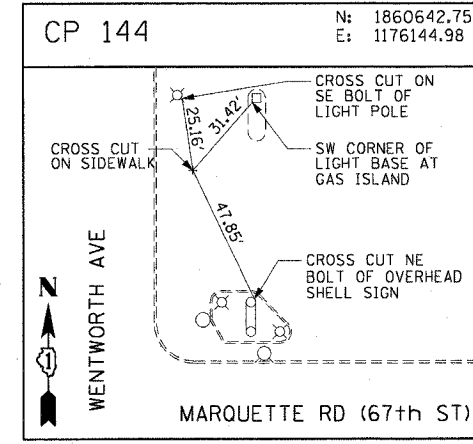
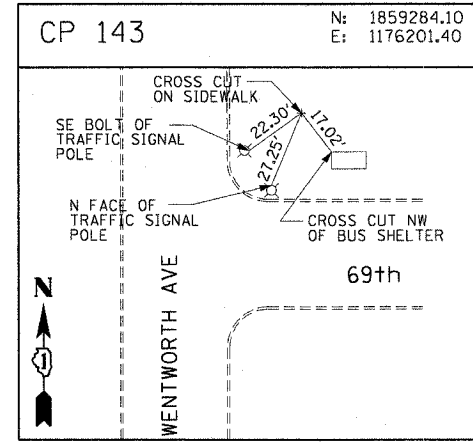
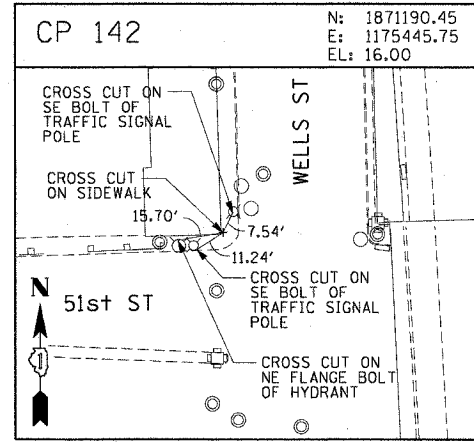
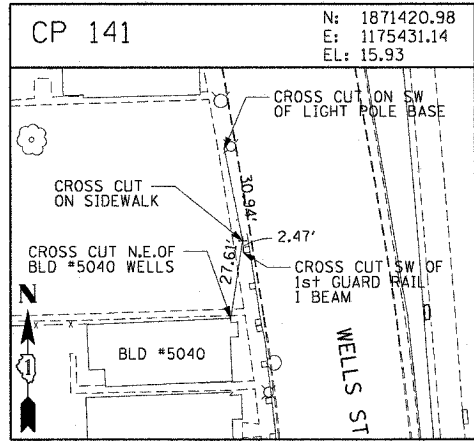
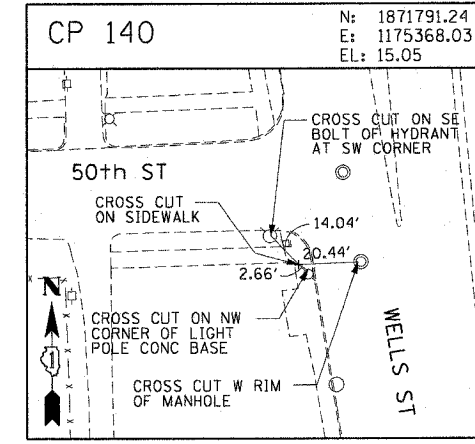
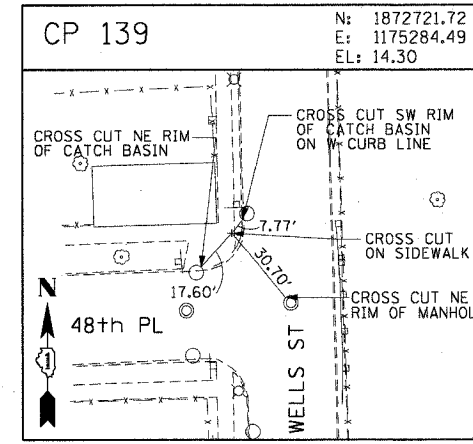
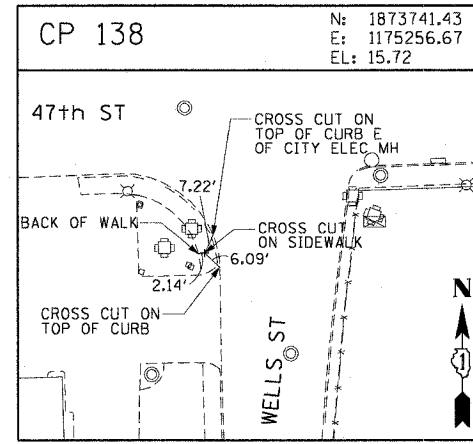
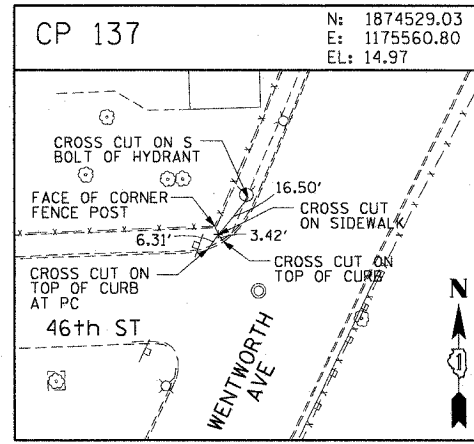
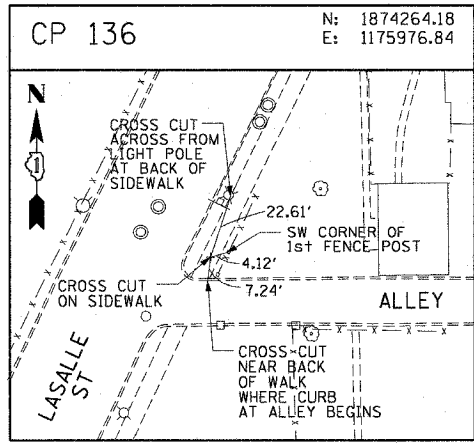


F.A.I. SECTION	COUNTY	TOTAL SHEETS	SHEET NO.
90/94	2003-0311	976	28
STA. TO STA.		FED. ROAD DIST. NO. 1 ILLINOIS FED. AID PROJECT	

62583



REVISIONS	
NAME	DATE

ILLINOIS DEPARTMENT OF TRANSPORTATION
F.A.I. 90/94 (DAN RYAN EXPRESSWAY)
31st STREET TO I-57

SURVEY TIES AND CONTROL POINTS

SCALE: 1"=30'
DATE: October 29, 2004

DRAWN BY: MRK
CHECKED BY: JAL

ms:\p04065\elec\N6-conr\20\sh\contract_2\alignments\control\020302a.sh 03/15/2004 03:54:44 PM