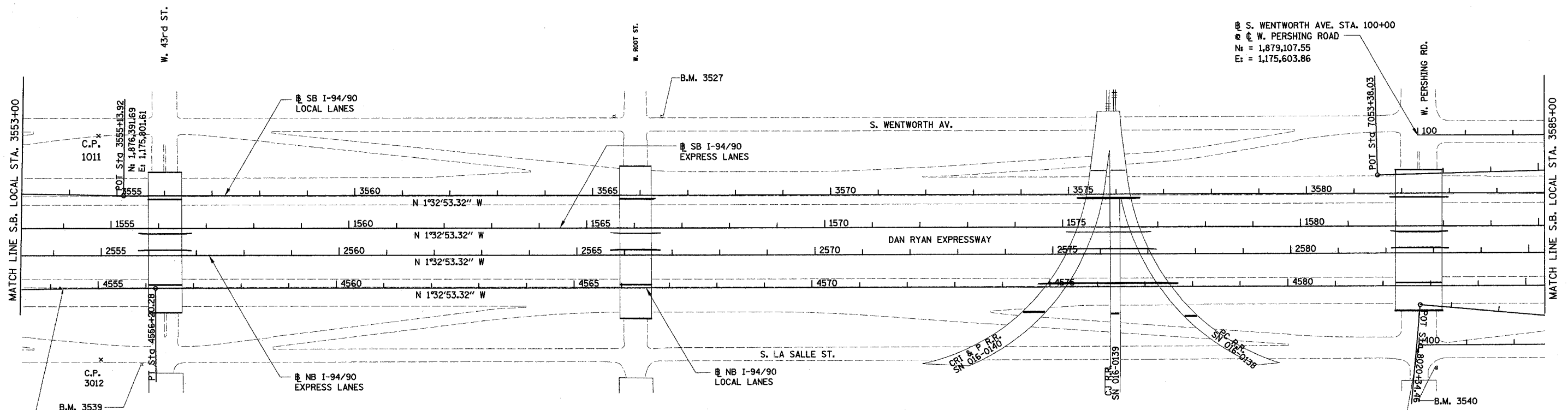
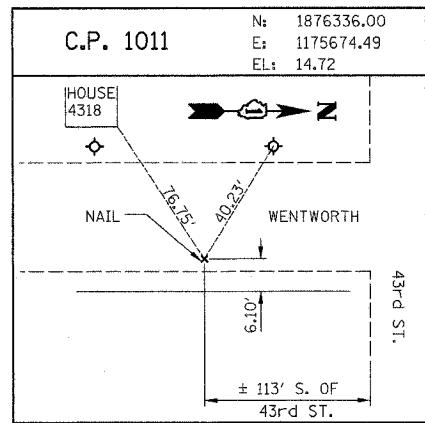
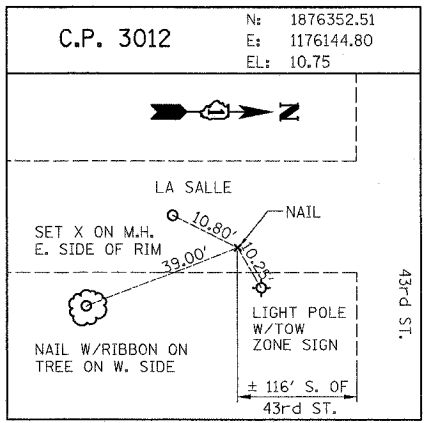


62583	F.A. RTE.	SECTION	COUNTY	TOTAL SHEETS	SHEET NO.
90/94	2003-0311	COOK	976	31	
STA. 3553+00.00		TO STA. 3585+00.00			
FED. ROAD DIST. NO.	ILLINOIS	FED. AID PROJECT			



PROP. CURVE NBLOC22
 PI STA. = 4554+19.42
 N_i = 1,876,262.66
 E_i = 1,175,997.17
 Δ = 1° 32' 04" (RT)
 D = 0° 22' 55"
 R = 15,000.00'
 T = 200.89'
 L = 401.75'
 E = 1.35'
 P.C. STA = 4552+18.53
 N_i = 1,876,062.07
 E_i = 1,176,007.97
 P.T. STA = 4556+20.28
 N_f = 1,876,463.47
 E_f = 1,175,991.74



S. WENTWORTH AVE. STA. 100+00
 @ C. W. PERSHING ROAD
 N_i = 1,879,107.55
 E_i = 1,175,603.86

S. LASALLE ST. STA. 400+00.00
 @ C. W. PERSHING ROAD
 N_i = 1,879,121.00
 E_i = 1,176,043.89

BOWMAN, BARRETT & ASSOCIATES INC.
 CONSULTING ENGINEERS
 139 EAST WASHINGTON STREET SUITE 2650 CHICAGO, ILLINOIS 60601
 JOB NO.

REVISIONS	
NAME	DATE

ILLINOIS DEPARTMENT OF TRANSPORTATION
 F.A.I. 90/94 (DAN RYAN EXPRESSWAY)
 31st STREET TO I-57
 ROADWAY LIGHTING PLANS
 ALIGNMENT AND TIES SHEET
 SCALE: 1"=100'
 DATE: OCTOBER 15, 2004
 DRAWN BY: RA
 CHECKED BY: JDC