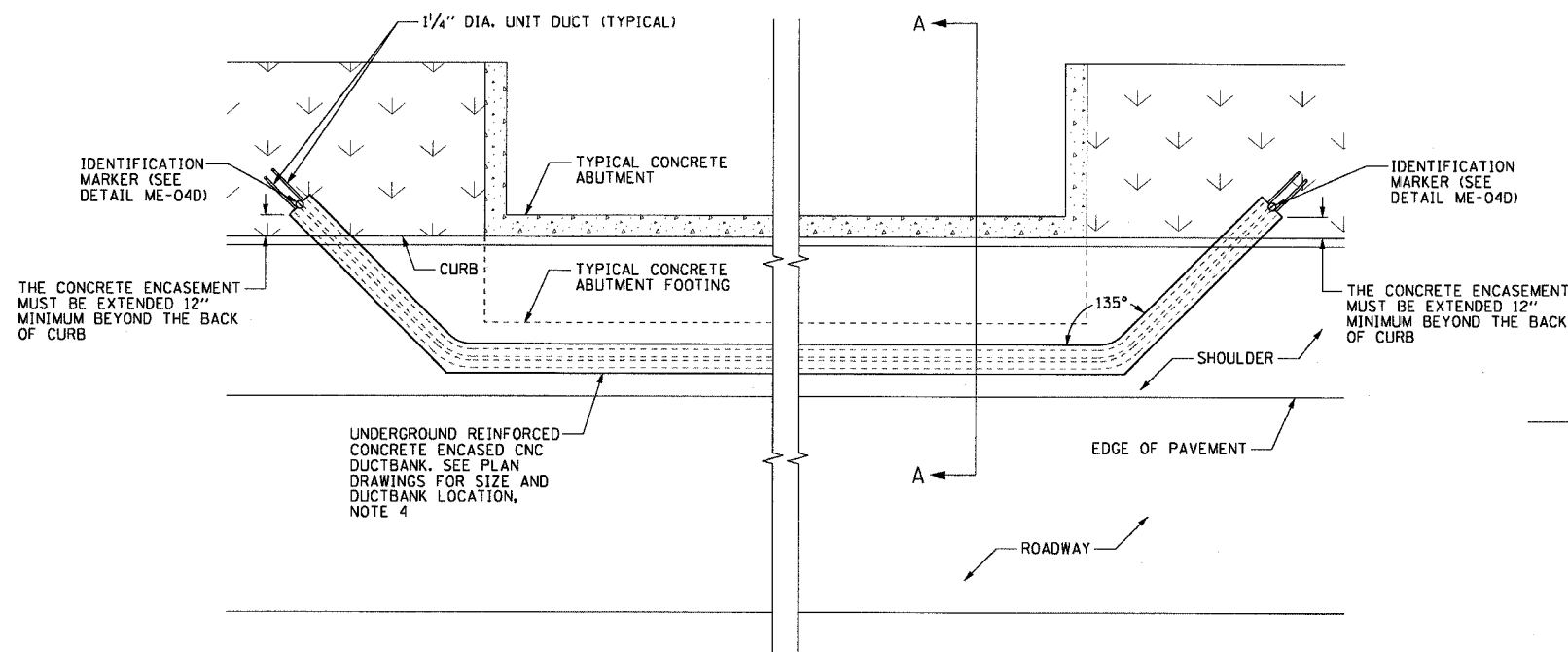


F.A.I. RTE.	SECTION	COUNTY	TOTAL SHEETS	SHEET NO.
90/94	2003-0311	COOK	976	46
STA.	TO STA.			
FED. ROAD DIST. NO. 1 ILLINOIS FED. AID PROJECT				

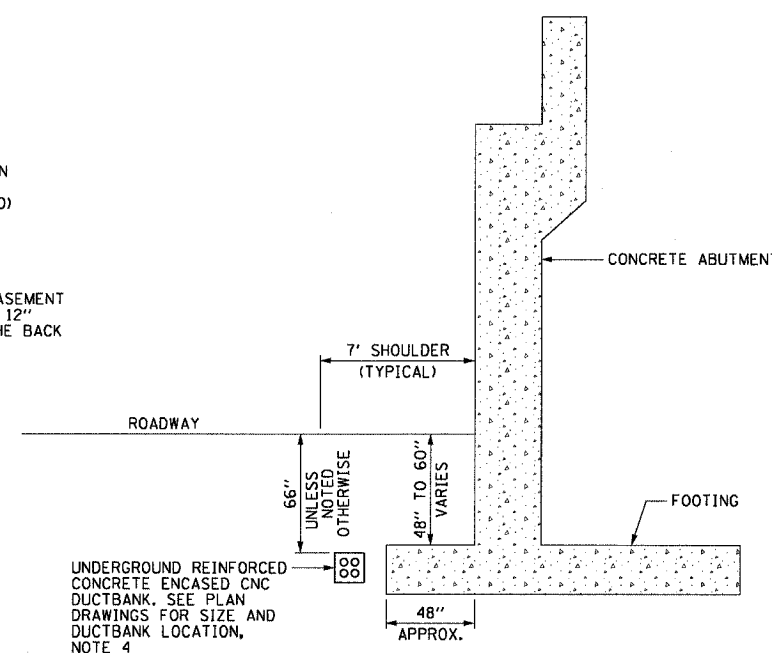
62583

**NOTES:**

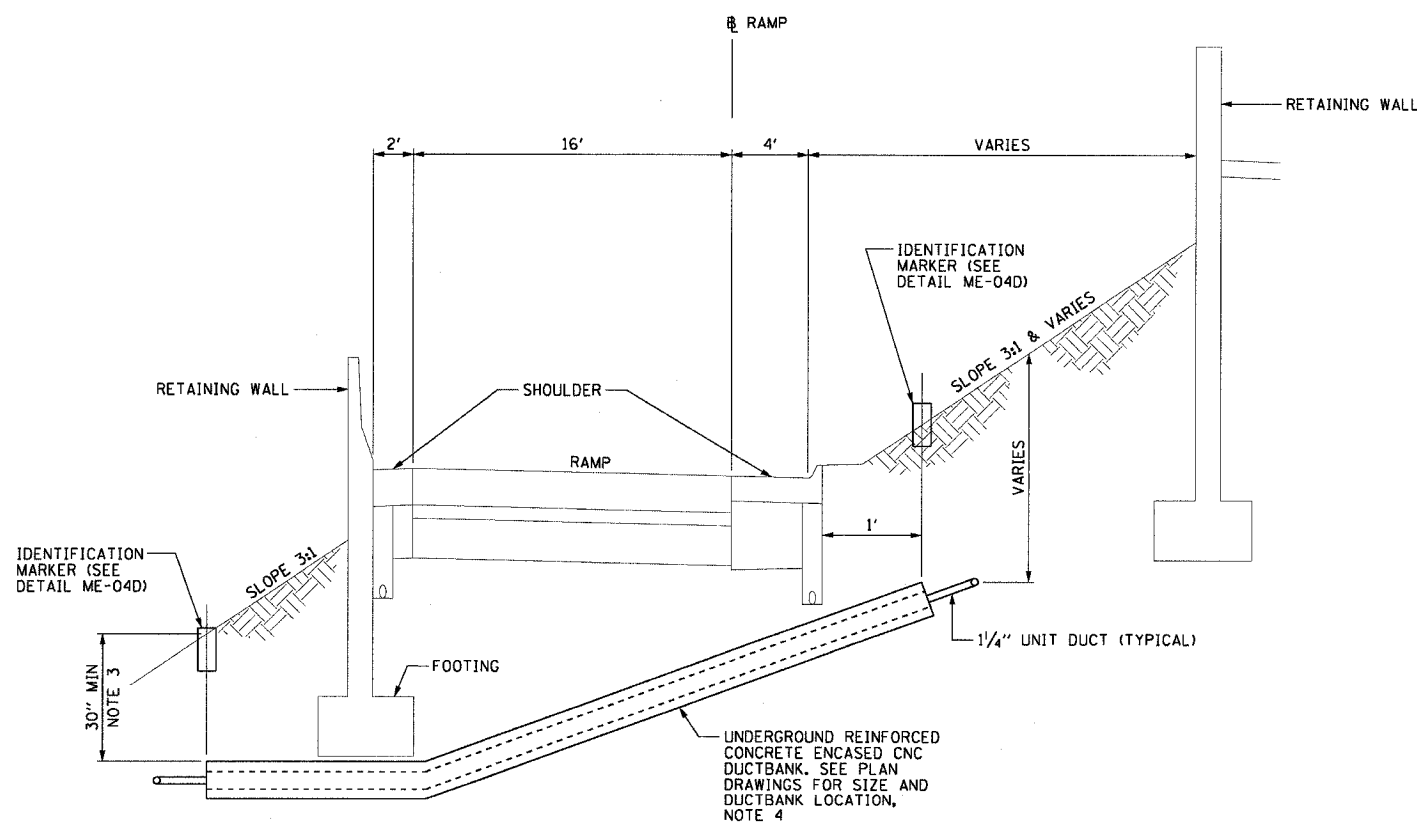
1. SEE DRAWINGS ME-01 AND ME-02 FOR ELECTRICAL SYMBOLS AND ABBREVIATIONS.
2. SEE PLAN DRAWINGS FOR THE PROPOSED CONDUIT ROUTING.
3. DUCTBANK DEPTH MUST BE ADJUSTED SUCH THAT THE TOP OF CONCRETE ENCASMENT IS INSTALLED UNDER THE RETAINING WALL FOOTING. THE DUCTBANK DEPTH MUST BE 30 INCHES MINIMUM.
4. SEE DRAWING ME-11 FOR ELECTRICAL CONCRETE DUCTBANK DETAILS.
5. SEE PLAN DRAWINGS FOR ANY DEVIATIONS IN DUCTBANK DEPTH.



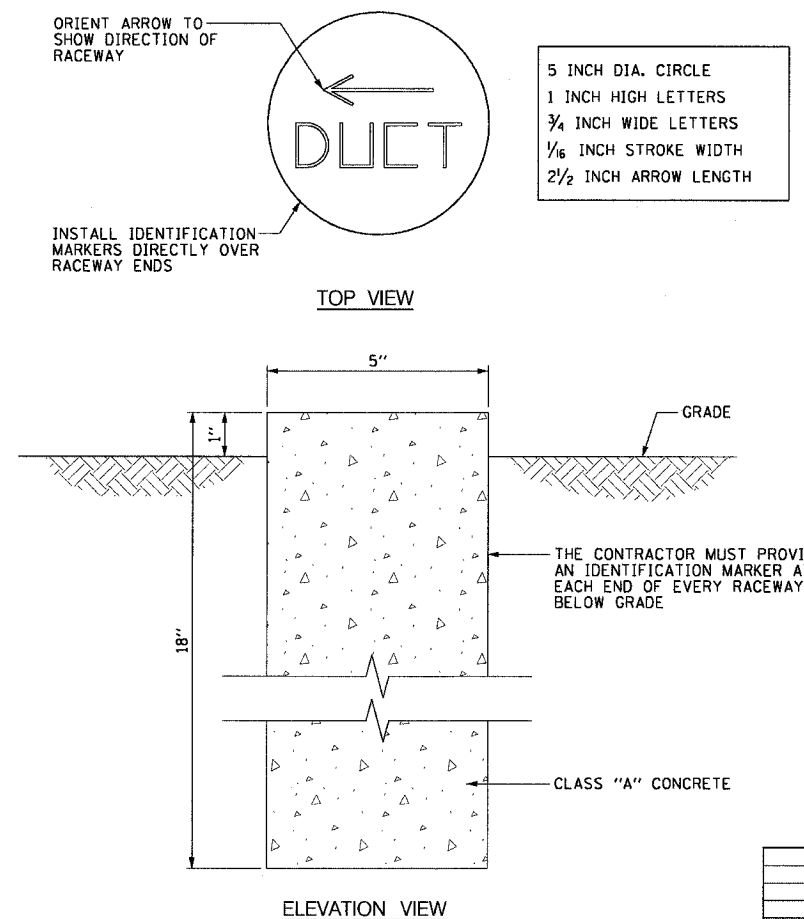
**ME-04A** DUCTBANK ROUTING AROUND ABUTMENT  
SCALE: 1/4" = 1'-0"  
DETAIL FOR REFERENCE ONLY, NOT INCLUDED IN THIS CONTRACT



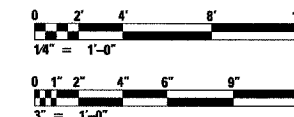
**ME-04B** DUCTBANK INSTALLATION DETAIL A-A  
SCALE: 1/4" = 1'-0"  
DETAIL FOR REFERENCE ONLY, NOT INCLUDED IN THIS CONTRACT



**ME-04C** TYPICAL CONCRETE ENCASED CNC UNDER RAMP INSTALLATION DETAIL  
NOT TO SCALE



**ME-04D** IDENTIFICATION MARKER DETAIL  
SCALE: 3" = 1'-0"



REVISIONS	
NAME	DATE

ILLINOIS DEPARTMENT OF TRANSPORTATION  
F.A.I. 90/94 (DAN RYAN EXPRESSWAY)  
31st STREET TO I-57

**DUCTBANK INSTALLATION DETAILS  
UNDER RAMPS AND AROUND  
ABUTMENTS**

SCALE: AS SHOWN  
DATE: October 29, 2004

DRAWN BY: CJM  
CHECKED BY: WDS