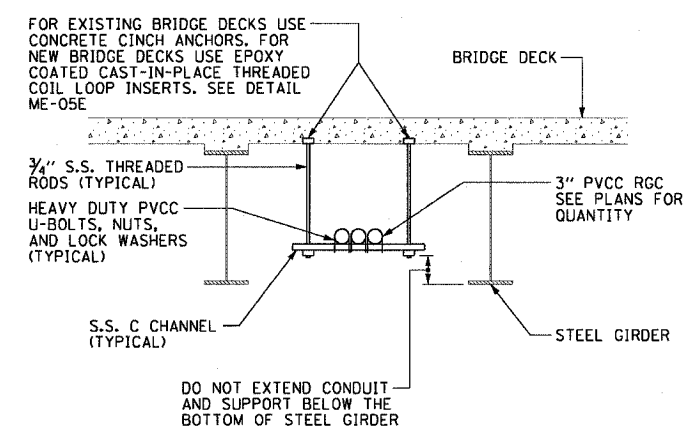


F.A.I. RTE.	SECTION	COUNTY	TOTAL SHEETS	SHEET NO.
90/94	2003-0311	COOK	976	47
STA.	TO STA.			
FED. ROAD DIST. NO. 1 ILLINOIS		FED. AID PROJECT		

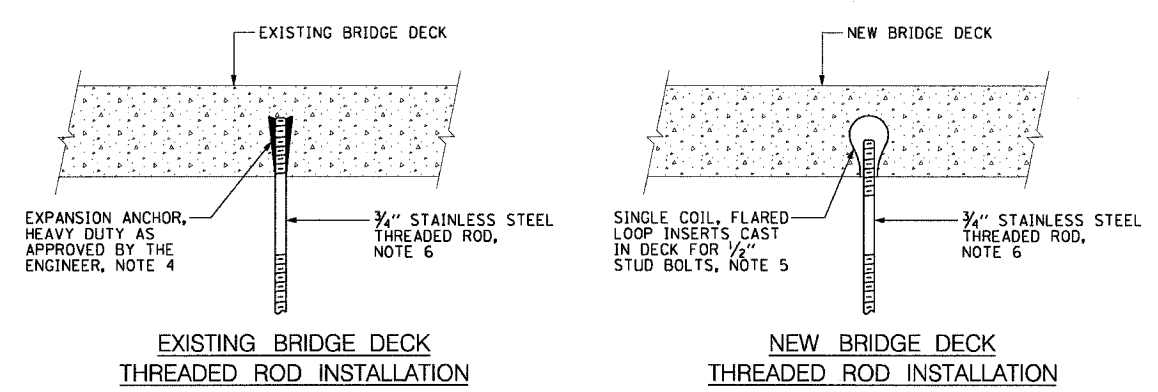
62583

NOTES:

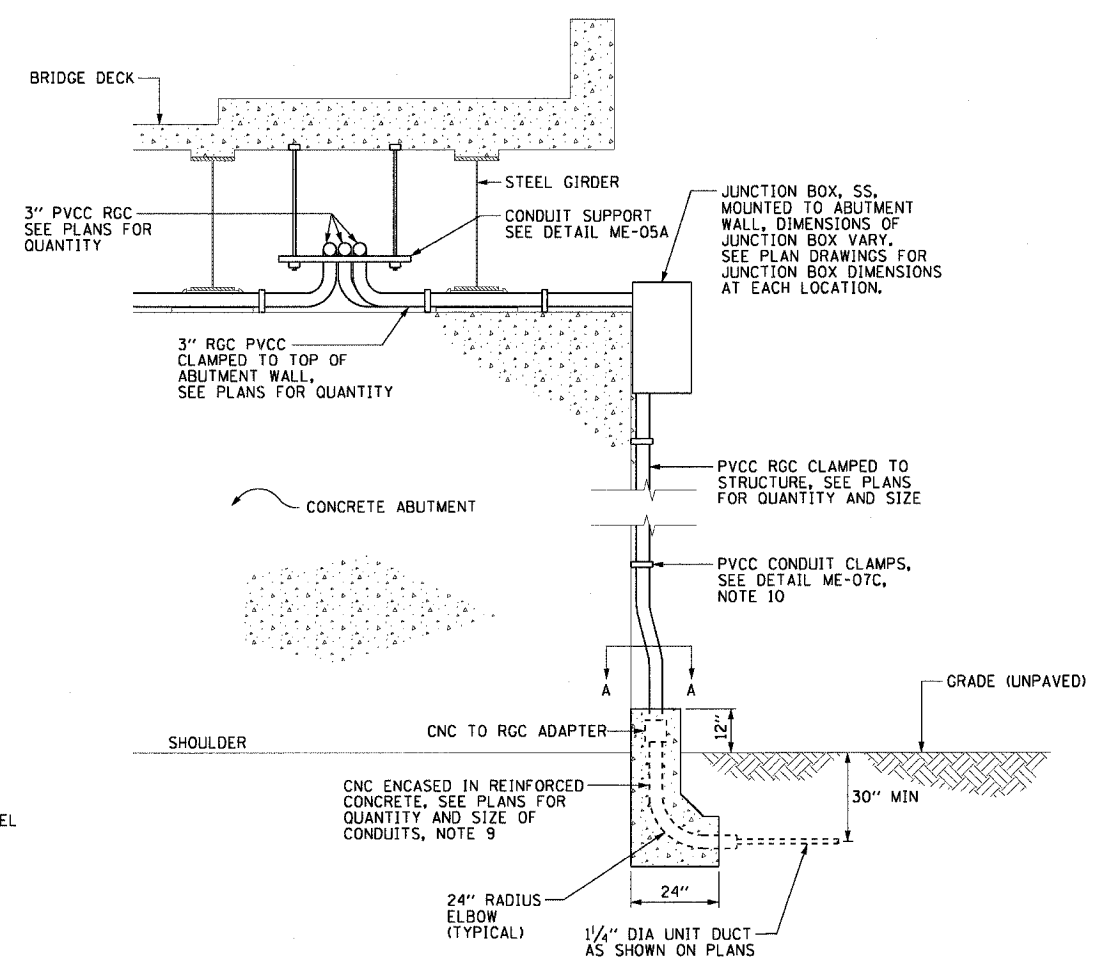
- SEE DRAWINGS ME-01 AND ME-02 FOR ELECTRICAL SYMBOLS AND ABBREVIATIONS.
- SEE PLAN DRAWINGS FOR THE PROPOSED CONDUIT ROUTING.
- ALL MOUNTING AND INSTALLATION HARDWARE FOR PVCC RGC MUST BE PVC COATED.
- THE CONTRACTOR MUST USE APPROVED HEAVY DUTY EXPANSION ANCHORS WHEN PENDANT MOUNTING THREADED RODS TO AN EXISTING BRIDGE DECK.
- THE CONTRACTOR MUST USE APPROVED SINGLE COIL FLARED LOOP INSERTS WHEN PENDANT MOUNTING THREADED RODS TO A NEW BRIDGE DECK. THE FLARED LOOP INSERTS MUST BE CAST INTO THE CONCRETE DECK. THE CONTRACTOR IS RESPONSIBLE FOR LOCATING AND COORDINATING THE INSERT LOCATIONS WITH THE BRIDGE DECK CONTRACTOR.
- THE CONTRACTOR MUST COORDINATE THREADED ROD END SIZES WITH THE LUMINAIRE AND VIBRATION DAMPER MANUFACTURERS.
- 1" DIAMETER LIQUID TIGHT FLEXIBLE METAL CONDUIT, MAXIMUM LENGTH 3'-0", TYPICAL FOR EACH INSTANCE AS SHOWN. PROVIDE PVC COATED RIGID GALVANIZED STEEL CONDUIT AS REQUIRED NOT TO EXCEED 3'-0" OF FLEXIBLE LIQUID TIGHT FLEXIBLE METAL CONDUIT. LIQUID TIGHT FLEXIBLE METAL CONDUIT WILL BE INCLUDED IN THE COST OF THE "CONDUIT ATTACHED TO STRUCTURE, 1" DIA., GALVANIZED STEEL, PVC COATED" PAY ITEM.
- SEE DRAWINGS ME-06 AND ME-07 FOR UNDERPASS LIGHTING INSTALLATION DETAILS.
- THE LAST FOUR FEET OF UNIT DUCT(S) IN GRADE AND ONE ADDITIONAL FOOT OF UNIT DUCT(S) ABOVE GRADE SHALL BE ENCASED IN REINFORCED CONCRETE AS SHOWN. THE CONCRETE ENCASED UNIT DUCT SHALL BE INCLUDED FOR PAYMENT UNDER THE APPROPRIATE "CONDUIT ENCASED, REINFORCED CONCRETE" PAY ITEM. ALLOW FIVE FEET FOR EACH LOCATION. THE CNC MUST BE ENCASED IN THE REINFORCED CONCRETE AS SHOWN ON DETAIL ME-11A.
- SECURE THE CONDUIT WITH PVC COATED CONDUIT CLAMPS AT 5'-0" INTERVALS FOR LATERALS AND WITHIN 2'-0" MAXIMUM FROM ANY JUNCTION BOX OR CHANGE IN DIRECTION. ALL PVC COATED CONDUIT CLAMPS WILL BE INCLUDED WITH THE COST OF THE "CONDUIT ATTACHED TO STRUCTURE 3" DIA., GALVANIZED STEEL, PVC COATED" PAY ITEM.



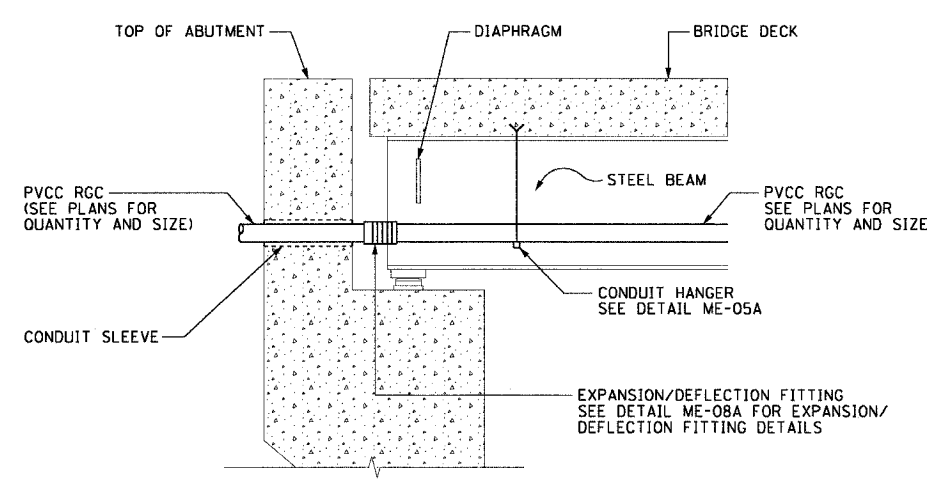
ME-05A TYPICAL CONDUIT SUPPORT ATTACHED TO BRIDGE DECK DETAIL
SCALE: 1/2" = 1'-0"



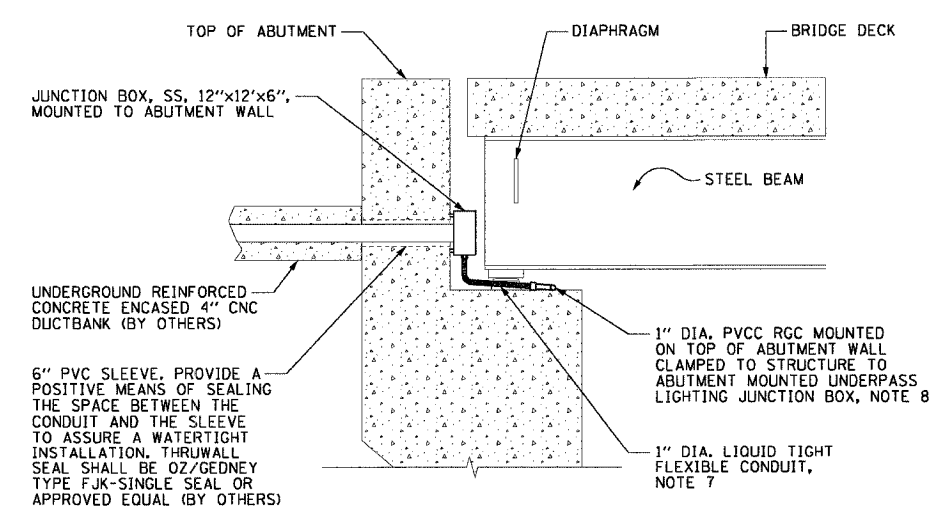
ME-05E ANCHOR DETAILS
NOT TO SCALE



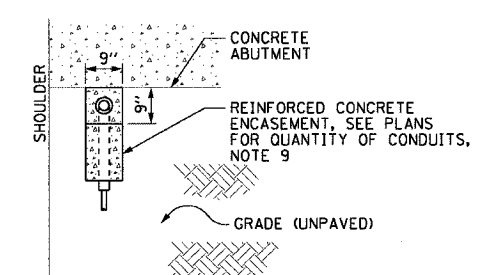
ME-05C TYPICAL JUNCTION BOX ATTACHED TO STRUCTURE DETAIL
SCALE: 1/2" = 1'-0"



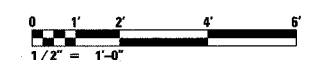
ME-05B TYPICAL CONDUIT INSTALLATION THROUGH ABUTMENT WALL
SCALE: 1/2" = 1'-0"
DETAIL FOR REFERENCE ONLY, NOT INCLUDED IN THIS CONTRACT



ME-05F TYPICAL CONDUIT INSTALLATION THROUGH ABUTMENT WALL FOR LIGHTING SERVICE FEED
SCALE: 1/2" = 1'-0"
DETAIL FOR REFERENCE ONLY, NOT INCLUDED IN THIS CONTRACT



ME-05D DETAIL A-A
SCALE: 1/2" = 1'-0"



ME-05

REVISIONS	
NAME	DATE

ILLINOIS DEPARTMENT OF TRANSPORTATION
F.A.I. 90/94 (DAN RYAN EXPRESSWAY)
31st STREET TO I-57
**CONDUIT ATTACHED TO BRIDGE STRUCTURE
INSTALLATION DETAILS**
SCALE: AS SHOWN DRAWN BY: CJM
DATE: October 29, 2004 CHECKED BY: WDS

m:\p\046\elec\cfr\2b\cfr\contract\2\me0505a.dwg 11/19/2004 11:46:24 AM