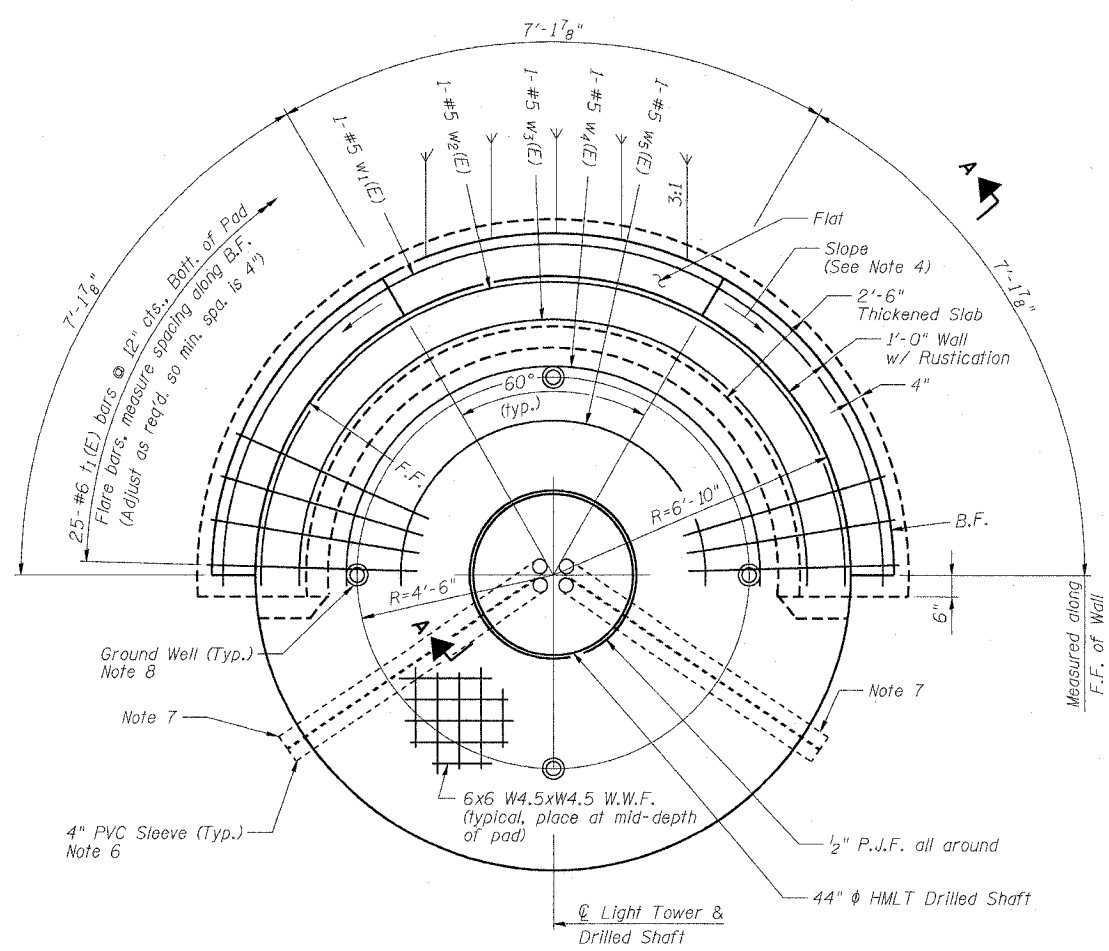


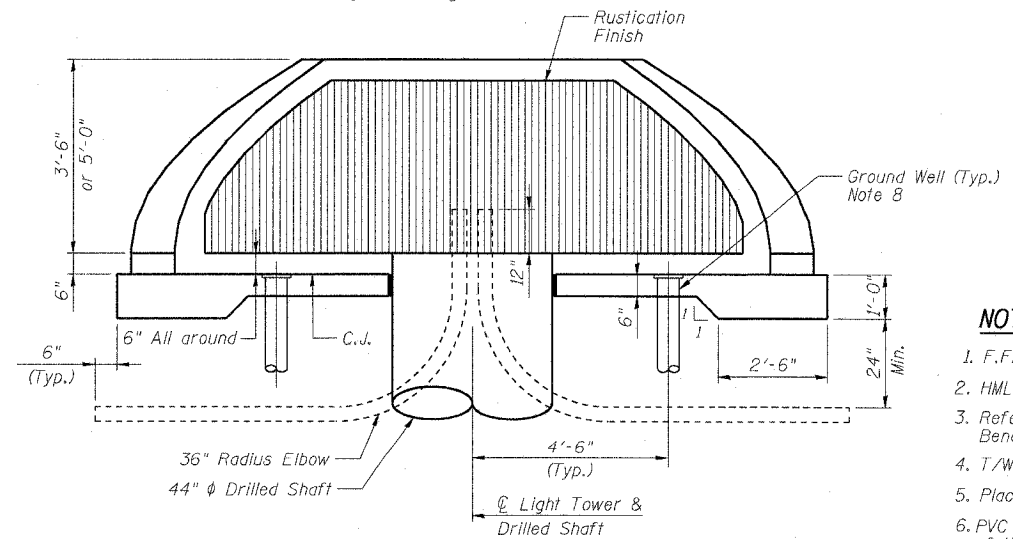
F.A.I. RTE.	SECTION	COUNTY	TOTAL SHEETS	SHEET NO.
90/94	2003-0311	COOK	976	54
STA.	TO STA.			
FED. ROAD DIST. NO. 1		ILLINOIS	FED. AID PROJECT	

62583

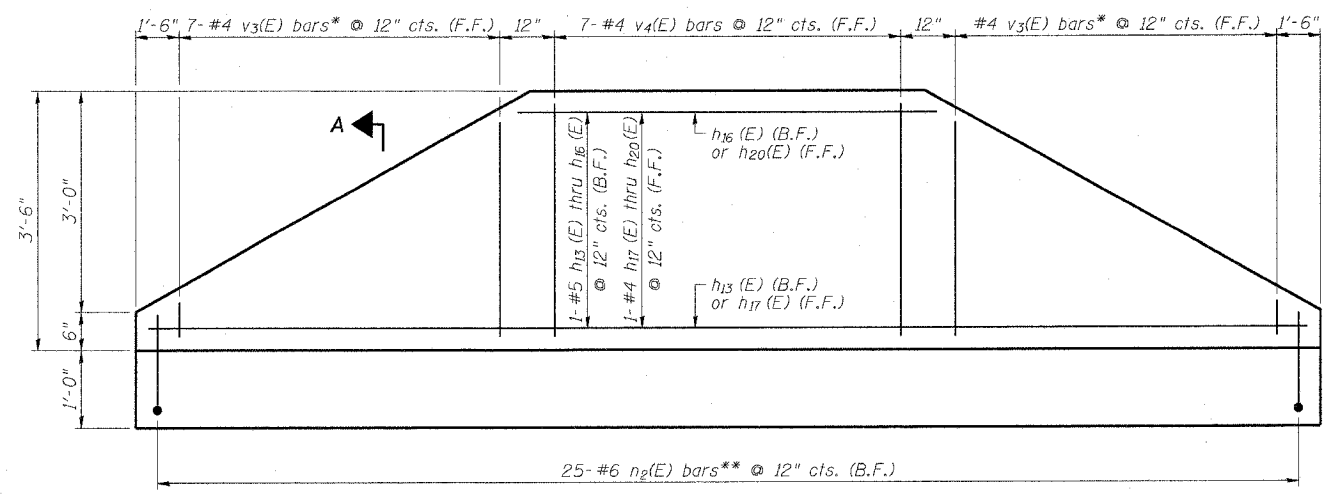


**PLAN VIEW**

Place Bars w<sub>1</sub>(E) thru w<sub>5</sub>(E) @ 12\" cts., Bott. of Pad

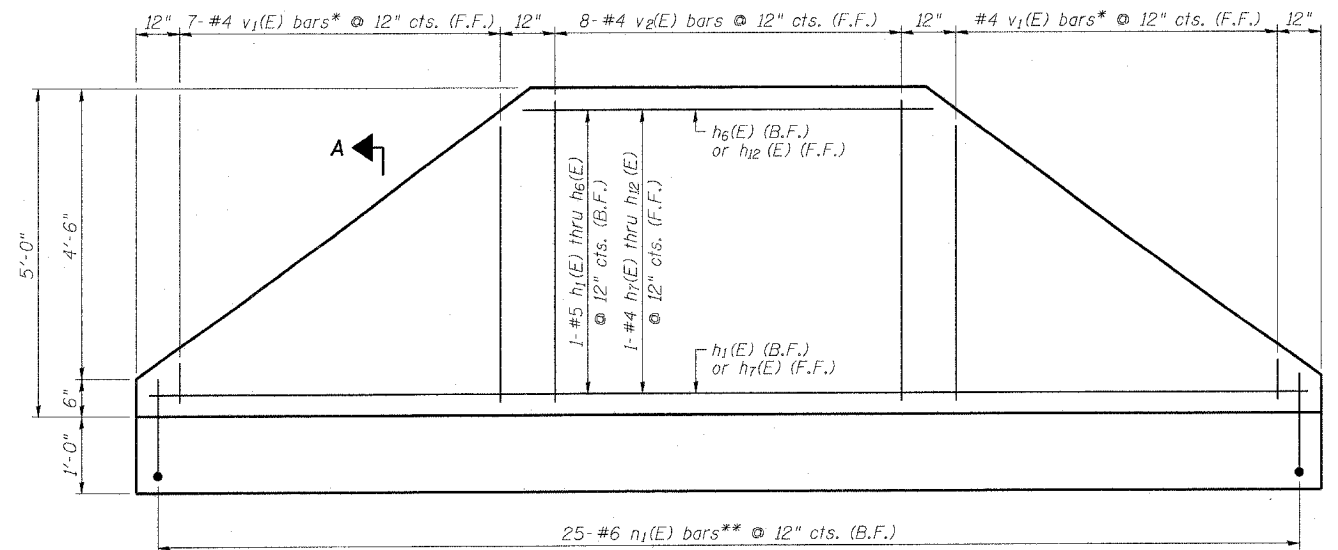


**ELEVATION VIEW**  
(HMLT not shown for clarity)



**3'-6\"/>**

(Looking at F.F.)



**5'-0\"/>**

(Looking at F.F.)

**NOTES**

1. F.F. and B.F. denote Front Face and Back Face, respectively.
2. HMLT denotes High Mast Light Tower.
3. Refer to HMLT Service Pad & Retaining Wall Details 2 for Bar Bending Diagrams, Bill of Material, Bar Sections and Details.
4. T/Wall slope is constant along the arc of any given radius.
5. Place horizontal tails of n<sub>1</sub>(E) & n<sub>2</sub>(E) bars radially.
6. PVC sleeves must be extended 6 inches beyond the edge of the concrete pad.
7. PVC sleeve for CCTV camera power feed (future). Sleeve must be capped unless noted otherwise on the plans.
8. Install ground wells 4'-6\"/>

**BOWMAN, BARRETT & ASSOCIATES INC.**  
CONSULTING ENGINEERS  
110 EAST RANDOLPH STREET SUITE 2650 CHICAGO, ILLINOIS 60601  
JOB NO. 658

REVISIONS	
NAME	DATE

ILLINOIS DEPARTMENT OF TRANSPORTATION  
F.A.I. 90/94 (DAN RYAN EXPRESSWAY)  
31st STREET TO I-57  
**HIGH MAST LIGHT TOWER SERVICE PAD & RETAINING WALL DETAILS 1**  
SCALE: NOT TO SCALE  
DATE: October 29, 2004  
DRAWN BY:  
CHECKED BY:

ME-13A

m:\v\40488\elect\ng\ch\2b\sh\Contract 2\ME02013A2A.dwg 10/15/2004 01:59:58 PM