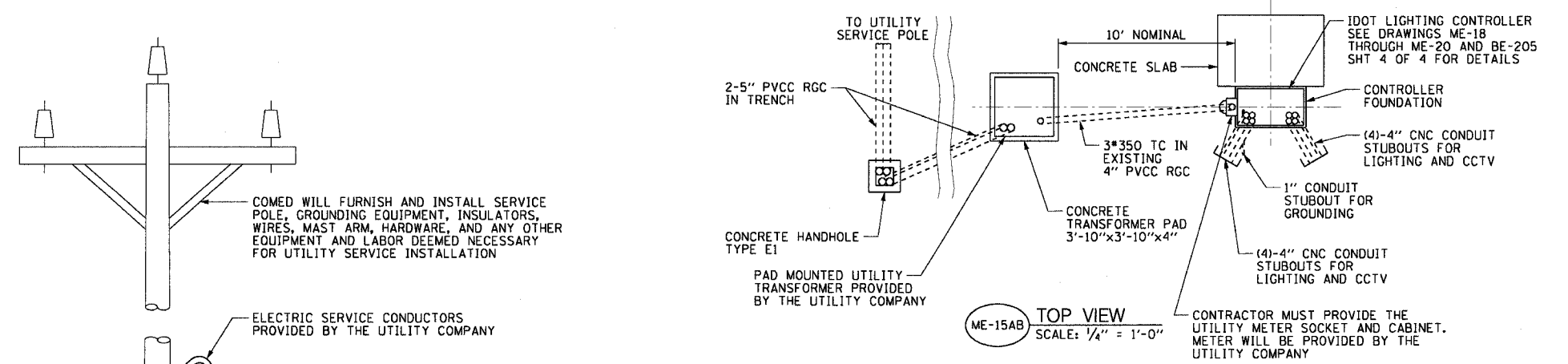


F.A.I. RTE.	SECTION	COUNTY	TOTAL SHEETS	SHEET NO.
90/94	2003-0311	COOK	976	58
STA.	TO STA.			
FED. ROAD DIST. NO. 1 ILLINOIS FED. AID PROJECT				

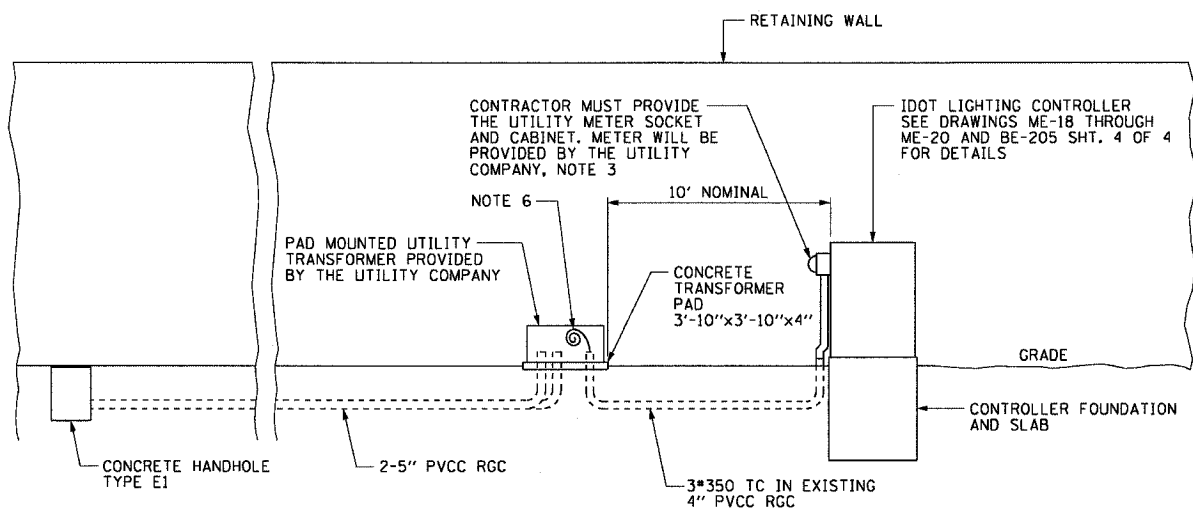
62583

NOTES:

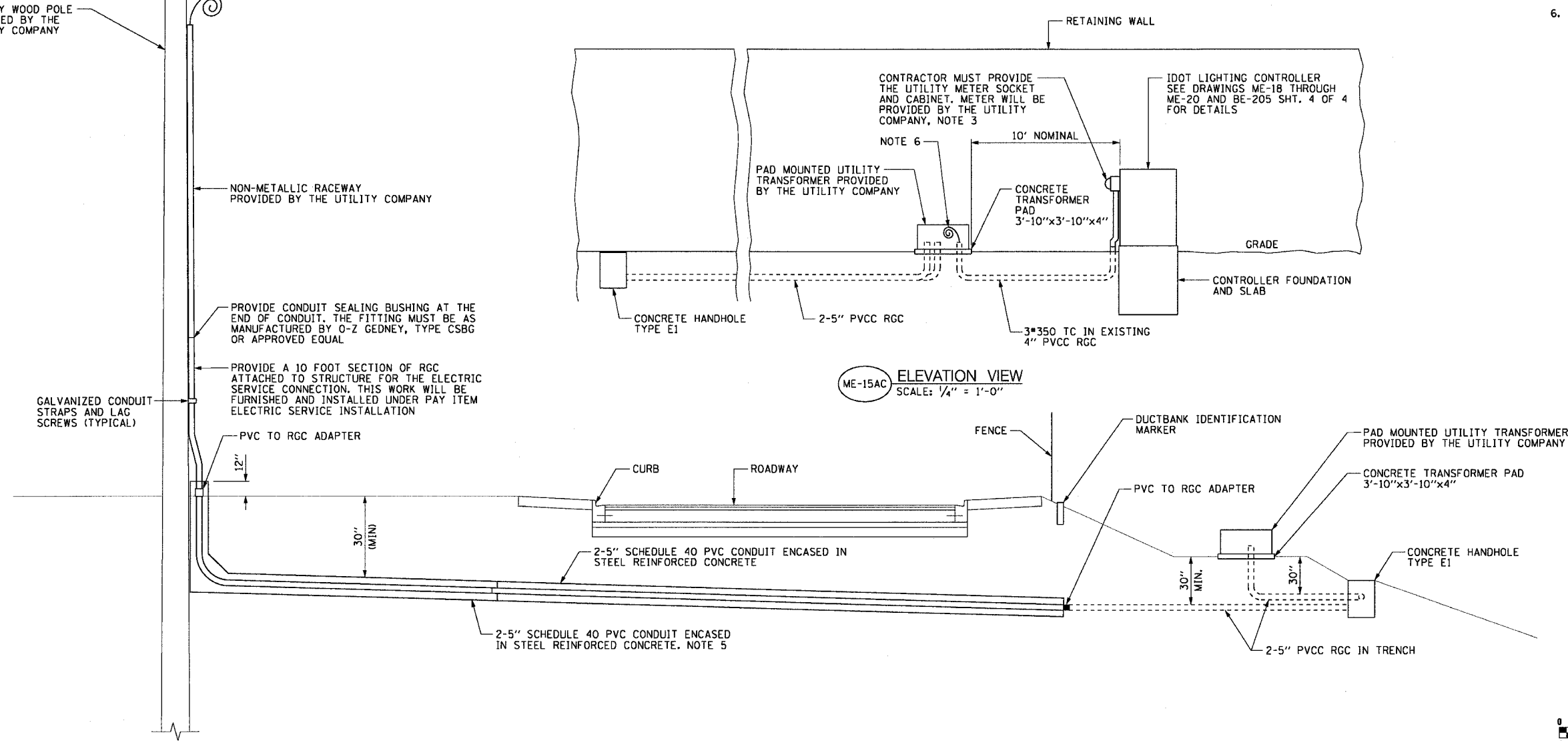
- SEE DRAWINGS ME-01 AND ME-02 FOR ELECTRICAL SYMBOLS AND ABBREVIATIONS.
- SEE ROADWAY PLAN DRAWINGS FOR CONSTRUCTION LIMITS.
- INTERCEPT EXISTING 4 INCH PVCC RGC STUBOUT AND PROVIDE NEW CONDUIT TO ELECTRIC METER SOCKET AS SHOWN.
- ALL WORK ASSOCIATED WITH THE INSTALLATION OF THE LIGHTING CONTROLLER UTILITY SERVICE FEED MUST BE COORDINATED WITH AND APPROVED BY COMED.
- ALL MATERIALS AND LABOR FOR THE INSTALLATION OF THE CONCRETE ENCASED DUCTBANK MUST MEET WITH ALL COMED REQUIREMENTS AND STANDARDS.
- THE CONTRACTOR MUST PROVIDE SUFFICIENT SLACK CABLES FOR TERMINATION BY COMED.



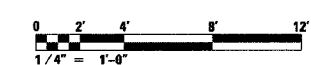
ME-15AB TOP VIEW
SCALE: 1/4" = 1'-0"



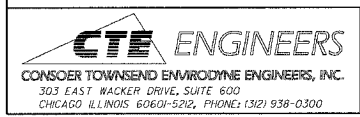
ME-15AC ELEVATION VIEW
SCALE: 1/4" = 1'-0"



ME-15AA CONDUIT INSTALLATION DETAIL FOR LIGHTING CONTROLLER ELECTRIC SERVICE
SCALE: 1/4" = 1'-0" NOTE 4



ME-15A



REVISIONS	
NAME	DATE

ILLINOIS DEPARTMENT OF TRANSPORTATION
F.A.I. 90/94 (DAN RYAN EXPRESSWAY)
31st STREET TO I-57

**CONDUIT INSTALLATION DETAILS FOR
LIGHTING CONTROLLER ELECTRIC SERVICE**

SCALE: AS SHOWN
DATE: October 29, 2004

DRAWN BY: C.JM/HR
CHECKED BY: WDS

11/22/2004 03:06:53 PM m:\p40466\elec\contract\2003\contract_2003\2015a.dwg