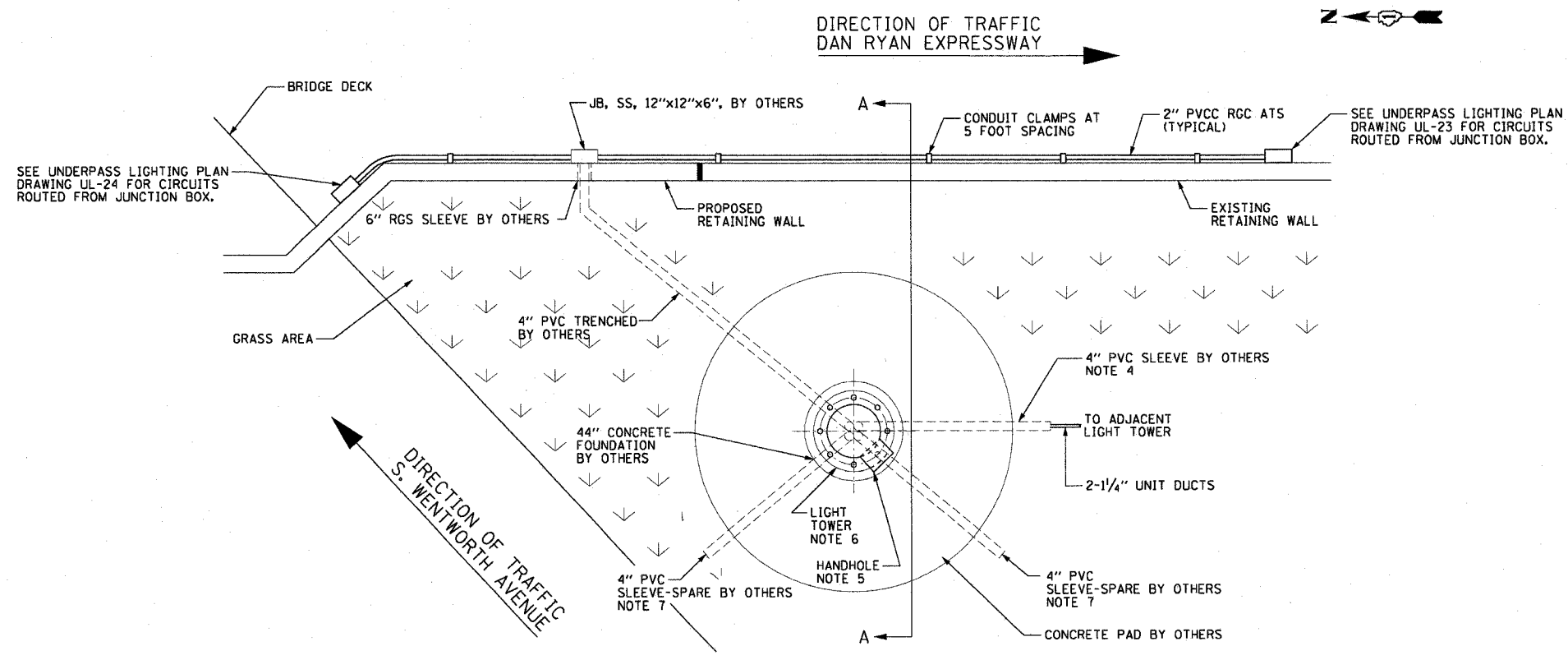


F.A.I. RTE.	SECTION	COUNTY	TOTAL SHEETS	SHEET NO.
90/94	2003-0311	COOK	976	60
STA.	TO STA.			
FED. ROAD DIST. NO. 1 ILLINOIS FED. AID PROJECT				

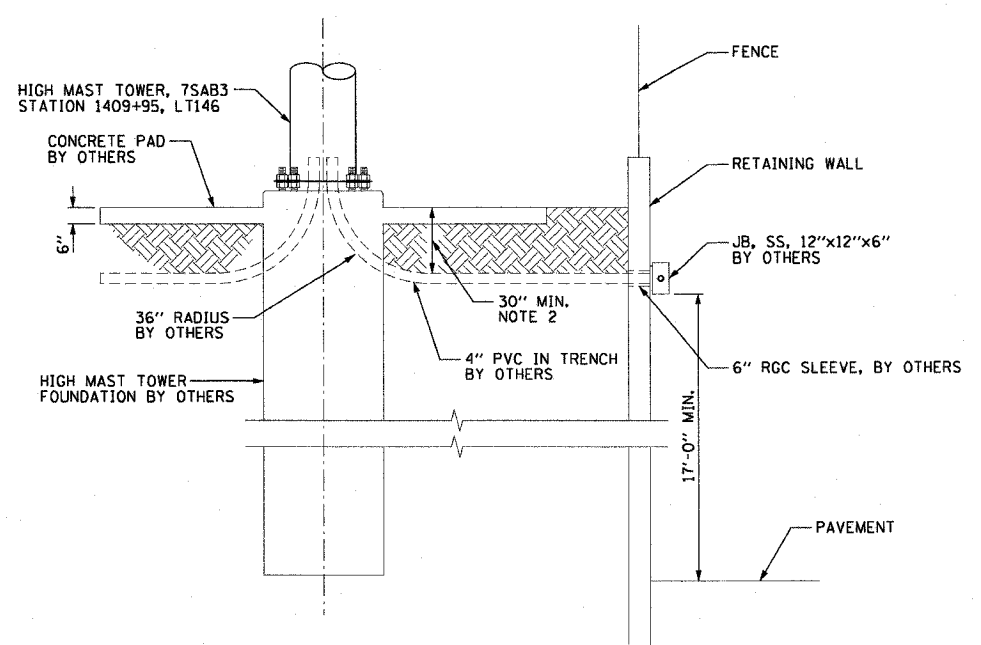
62583

**NOTES:**

- SEE DRAWINGS ME-01 AND ME-02 FOR ELECTRICAL SYMBOLS AND ABBREVIATIONS.
- CONDUIT SLEEVES MUST BE INSTALLED A MINIMUM OF 30 INCHES BELOW GRADE.
- SEE PLAN DRAWINGS FOR QUANTITY, SIZE, AND TYPE OF CONDUIT AND CIRCUITS ROUTED TO EACH HIGH MAST LIGHT TOWER FOUNDATION AND TO JUNCTION BOX.
- PVC SLEEVES MUST BE EXTENDED 6 INCHES BEYOND THE EDGE OF THE CONCRETE PAD AND THE SLEEVE ENDS MUST BE CAPPED.
- THE HANDHOLE FOR THE HIGH MAST LIGHTING UNIT MUST BE ORIENTED SUCH THAT IT IS MOUNTED ON THE SIDE OF THE POLE THAT IS OPPOSITE THE DIRECTION OF TRAFFIC.
- SEE DETAIL ME-13A FOR TYPICAL CONDUIT INSTALLATION DETAILS FOR GROUND MOUNTED HIGH MAST LIGHT TOWER FOUNDATIONS.
- PVC SLEEVE FOR CCTV CAMERA POWER FEED (FUTURE). SLEEVE MUST BE CAPPED UNLESS NOTED OTHERWISE ON THE PLANS.



**ME-17A** CONDUIT AND JUNCTION BOX MOUNTING DETAIL  
NOT TO SCALE  
DETAIL FOR REFERENCE ONLY, NOT INCLUDED IN THIS CONTRACT



**ME-17B** DETAIL A-A  
NOT TO SCALE  
DETAIL FOR REFERENCE ONLY, NOT INCLUDED IN THIS CONTRACT

ME-17

REVISIONS	
NAME	DATE

ILLINOIS DEPARTMENT OF TRANSPORTATION  
F.A.I. 90/94 (DAN RYAN EXPRESSWAY)  
31st STREET TO I-57  
**LIGHT TOWER 7 SAB3  
CONDUIT INSTALLATION DETAIL**

SCALE: AS SHOWN DRAWN BY: CJM/HAR  
DATE: October 29, 2004 CHECKED BY: WDS

10/14/2004 10:56:21 AM