

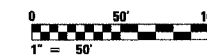
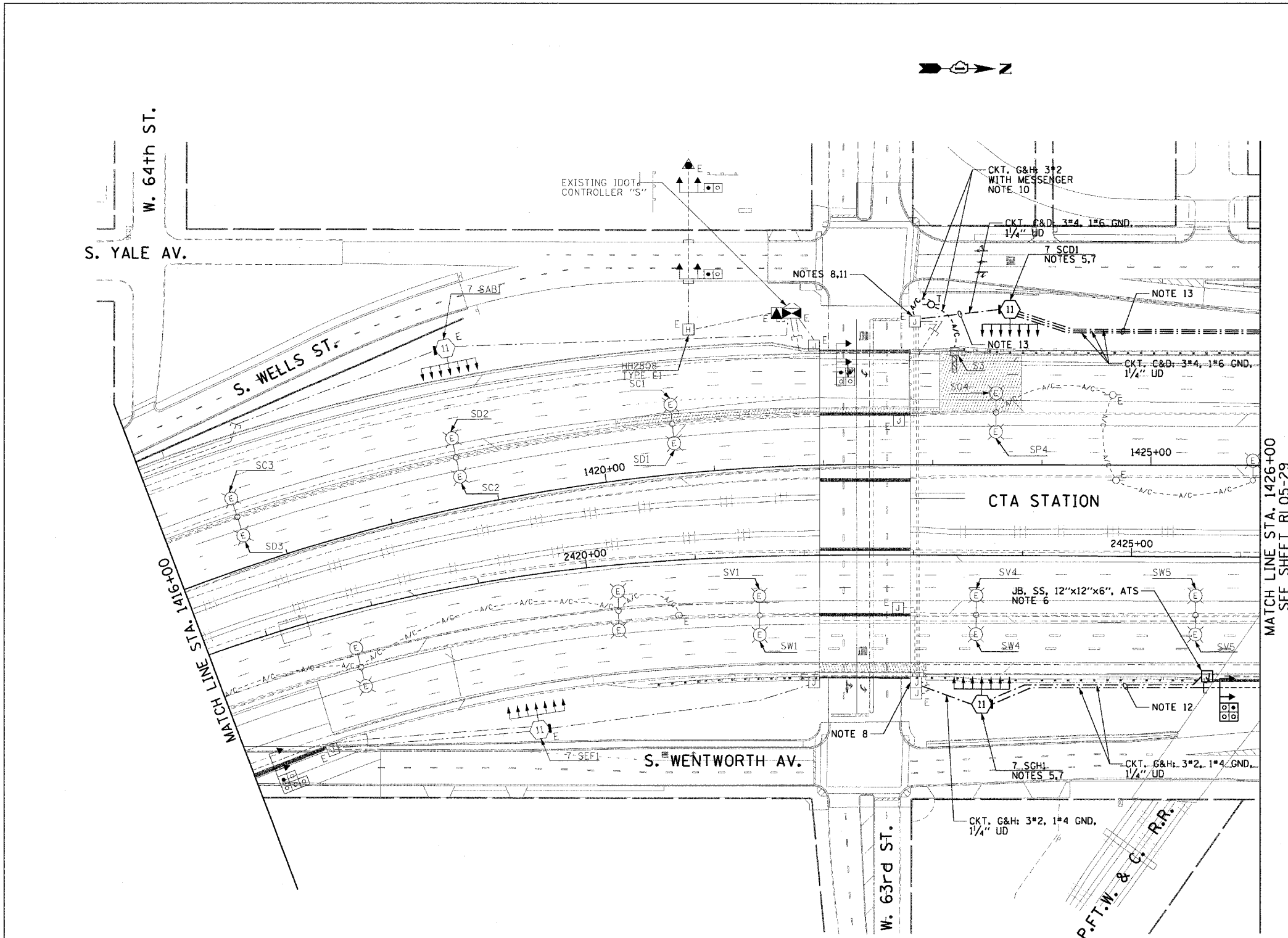
| | | | | |
|------------------------------------|-----------|----------|------------------|-----------|
| F.A.I. RTE. | SECTION | COUNTY | TOTAL SHEETS | SHEET NO. |
| 90/94 | 2003-0311 | COOK | 976 | 143 |
| STA. 1416+00.00 TO STA. 1426+00.00 | | | | |
| FED. ROAD DIST. NO. 1 | | ILLINOIS | FED. AID PROJECT | |

62583

NOTES:

- SEE DRAWINGS ME-01 AND ME-02 FOR ELECTRICAL SYMBOLS AND ABBREVIATIONS.
- COORDINATE ALL WORK WITH IDOT CONTRACT NO. 62693.
- UNLESS NOTED OTHERWISE, ALL ITEMS AND WORK SHOWN IN HEAVY LINE WEIGHT ON THIS DRAWING ARE PROPOSED ITEMS AND WORK.
- SEE DRAWING ES-04 FOR HIGH MAST LIGHT TOWER SCHEDULE.
- HIGH MAST TOWER FOUNDATION WILL BE INSTALLED BY OTHERS IN IDOT CONTRACT NO. 62693.
- JUNCTION BOX MOUNTED ON OVERPASS STRUCTURE FOR UNDERPASS LIGHTING POWER FEED MUST BE INSTALLED AS SHOWN ON DETAILS ME-06A AND ME-14C, UNLESS NOTED OTHERWISE. SEE DRAWING UL-26 FOR P.F.T.W. & C. RAILROAD UNDERPASS LIGHTING PLANS.
- THE CONDUIT FOR ALL GROUND MOUNTED HIGH MAST TOWERS MUST BE INSTALLED AS SHOWN ON DRAWING ME-13.
- SPLICE NEW LIGHTING CIRCUIT CABLES TO THE CORRESPONDING EXISTING LIGHTING CIRCUITS LOCATED WITHIN THE EXISTING JUNCTION BOX.
- RUN PARALLEL RACEWAYS IN COMMON TRENCH. THE FINAL INSTALLATION LOCATIONS OF THE LIGHTING RACEWAYS MUST BE COORDINATED WITH THE RACEWAYS SHOWN ON THE SURVEILLANCE PLANS.
- PROVIDE A TEMPORARY POWER FEED TO THE EXISTING SIGN TRUSS STRUCTURE LIGHTING UNITS. SEE DRAWING ME-25 FOR TEMPORARY POWER FEED TO SIGN STRUCTURE DETAILS.
- CONTRACTOR MUST DRILL AN ACCESS HOLE ON THE BOTTOM OF THE EXISTING JUNCTION BOX FOR THE TEMPORARY AERIAL CABLES. PROVIDE A WEATHERTIGHT SEAL WHERE THE AERIAL CABLES ENTER THE JUNCTION BOX.
- ALL UNIT DUCT BETWEEN HIGH MAST LIGHT TOWERS 7 SGH1 AND 7 SGH2 MUST BE INSTALLED A MAXIMUM OF 30'-0" FROM EDGE OF PAVEMENT TO AVOID CONFLICT WITH FUTURE IDOT CONTRACT NO. 62301.
- ALL UNIT DUCT BETWEEN THE WEST 63rd ST. ABUTMENT AND STA. 1427+77 MUST BE INSTALLED AT A MINIMUM TRENCH DEPTH OF 5'-0" TO AVOID CONFLICTS WITH FUTURE IDOT CONTRACT NO. 62303.

m:\p40465\elect\6-cont\25\slm\contract 2\2003\10202820_05.dwg



RL05-28

| REVISIONS | |
|-----------|------|
| NAME | DATE |
| | |
| | |
| | |
| | |
| | |
| | |
| | |
| | |
| | |

ILLINOIS DEPARTMENT OF TRANSPORTATION
F.A.I. 90/94 (DAN RYAN EXPRESSWAY)
31st STREET TO I-57

**ROADWAY LIGHTING PLANS
PROPOSED IMPROVEMENTS 2005**

SCALE: 1"=50' DRAWN BY: CJM
DATE: October 29, 2004 CHECKED BY: WBS

CTE ENGINEERS
CONSOER TOWNSEND ENVIRONMENTAL ENGINEERS, INC.
303 EAST WACKER DRIVE, SUITE 600
CHICAGO, ILLINOIS 60601-5262, PHONE: (312) 938-0300

11/19/2004 0:40:44 PM