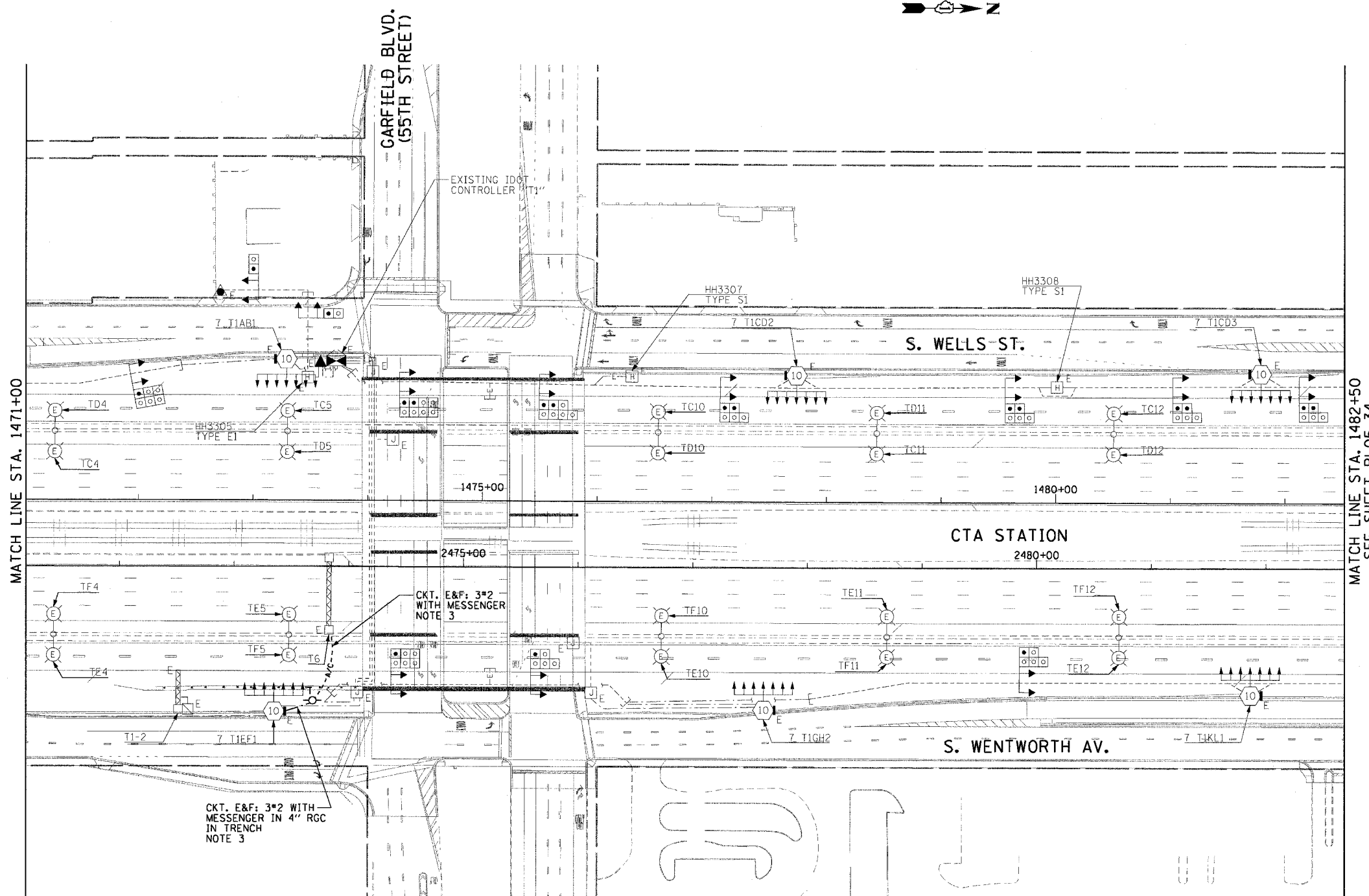


F.A.I. RTE.	SECTION	COUNTY	TOTAL SHEETS	SHEET NO.
90/94	2003-0311	COOK	976	147
STA. 1471+00.00 TO STA. 1482+50.00		FED. ROAD DIST. NO. 1 ILLINOIS FED. AID PROJECT		

62583

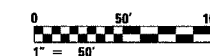
NOTES:

1. SEE DRAWINGS ME-01 AND ME-02 FOR ELECTRICAL SYMBOLS AND ABBREVIATIONS.
2. UNLESS NOTED OTHERWISE, ALL ITEMS AND WORK SHOWN IN HEAVY LINE WEIGHT ON THIS DRAWING ARE PROPOSED ITEMS AND WORK.
3. PROVIDE A TEMPORARY POWER FEED TO THE EXISTING SIGN TRUSS STRUCTURE LIGHTING UNITS. SEE DRAWING ME-25 FOR TEMPORARY POWER FEED TO SIGN STRUCTURE DETAILS.



MATCH LINE STA. 1471+00

MATCH LINE STA. 1482+50
SEE SHEET RL05-34



RL05-33

REVISIONS	
NAME	DATE

ILLINOIS DEPARTMENT OF TRANSPORTATION
F.A.I. 90/94 (DAN RYAN EXPRESSWAY)
31st STREET TO I-57
**ROADWAY LIGHTING PLANS
PROPOSED IMPROVEMENTS 2005**

SCALE: 1"=50' DRAWN BY: CJM
DATE: October 29, 2004 CHECKED BY: WDS