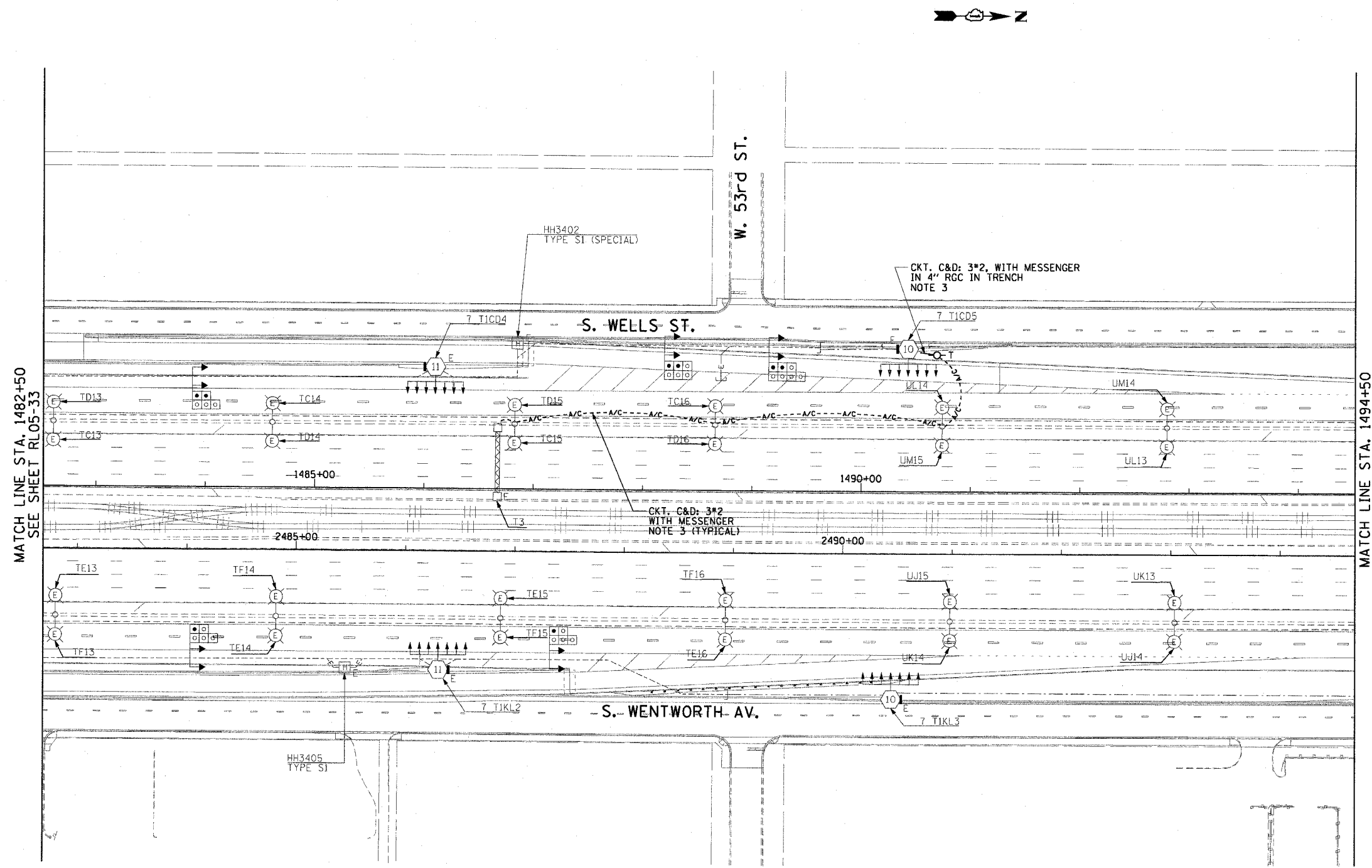


F.A.I. RTE.	SECTION	COUNTY	TOTAL SHEETS	SHEET NO.
90/94	2003-0311	COOK	976	148
STA. 1482+50.00		TO STA. 1494+50.00		
FED. ROAD DIST. NO. 1		ILLINOIS FED. AID PROJECT		

62583

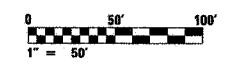
**NOTES:**

- SEE DRAWINGS ME-01 AND ME-02 FOR ELECTRICAL SYMBOLS AND ABBREVIATIONS.
- UNLESS NOTED OTHERWISE, ALL ITEMS AND WORK SHOWN IN HEAVY LINE WEIGHT ON THIS DRAWING ARE PROPOSED ITEMS AND WORK.
- PROVIDE A TEMPORARY POWER FEED TO THE EXISTING SIGN TRUSS STRUCTURE LIGHTING UNITS. SEE DRAWING ME-25 FOR TEMPORARY POWER FEED TO SIGN STRUCTURE DETAILS.



MATCH LINE STA. 1482+50  
SEE SHEET RL05-33

MATCH LINE STA. 1494+50



RL05-34

REVISIONS	
NAME	DATE

ILLINOIS DEPARTMENT OF TRANSPORTATION  
F.A.I. 90/94 (DAN RYAN EXPRESSWAY)  
31st STREET TO I-57  
**ROADWAY LIGHTING PLANS  
PROPOSED IMPROVEMENTS 2005**

SCALE: 1"=50'  
DATE: October 29, 2004

DRAWN BY: CJM  
CHECKED BY: WDS

**CTE ENGINEERS**  
CONSEOR TOWNSEND ENVIRODYNE ENGINEERS, INC.  
303 EAST WACKER DRIVE, SUITE 600  
CHICAGO ILLINOIS 60601-5202, PHONE: (312) 938-0300

10/15/2004 02:35:30 PM